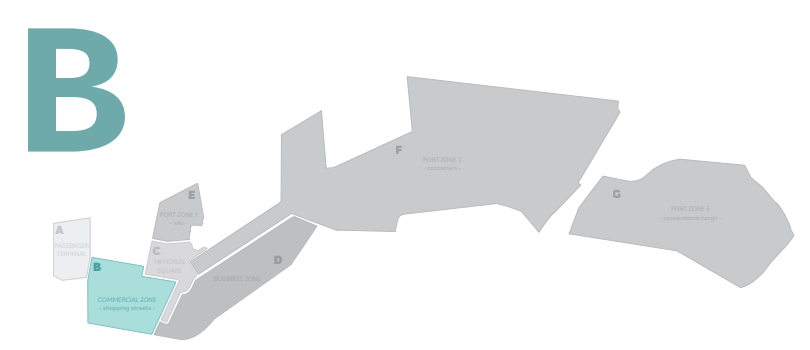


B

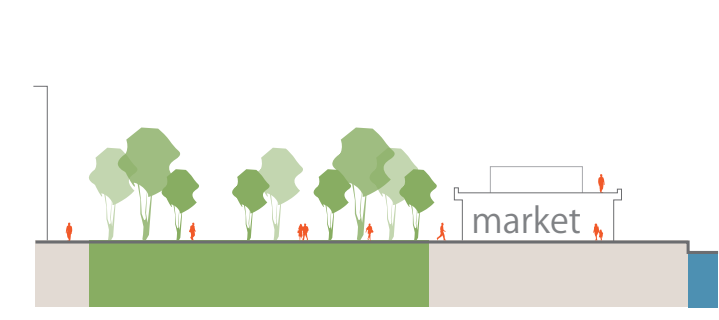


COMMERCIAL ZONE

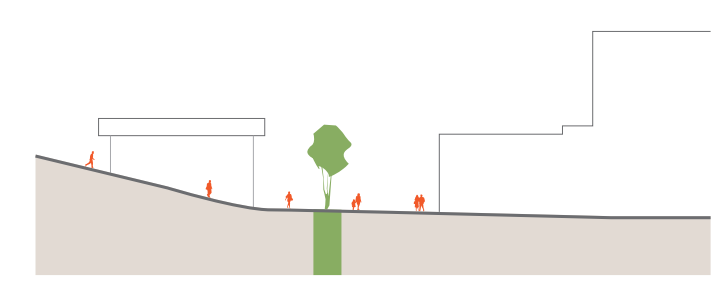
- shopping streets -



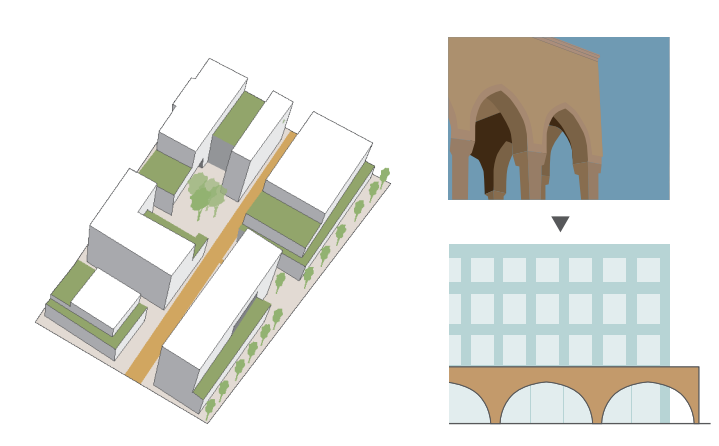
Interface between the city and the port
Integrate with the old town and ecology, a grand design with facades and green spaces that follow the historic cityscape is to be incorporated.



1. The pedestrian road



2. The underpass street



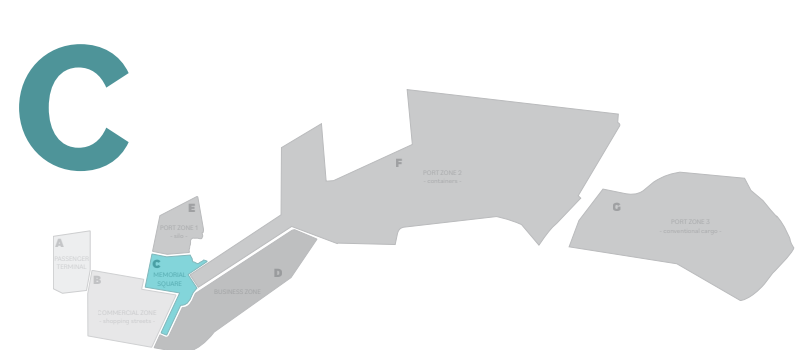
3. Building typology and exterior - design



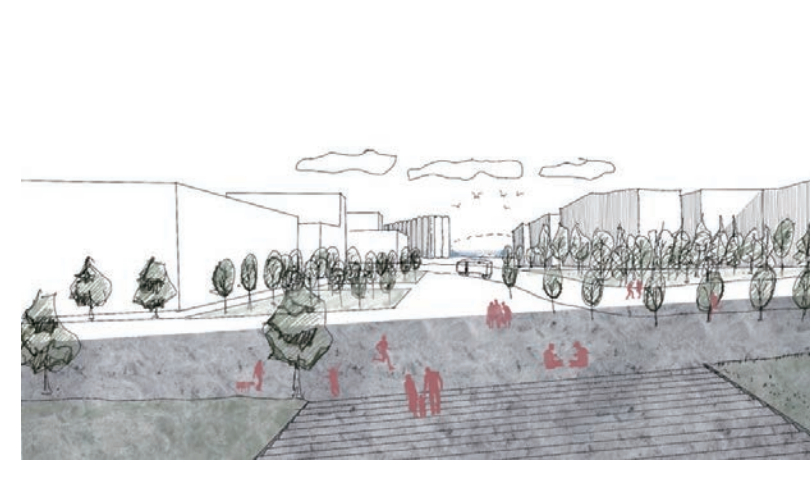
B: COMMERCIAL ZONE



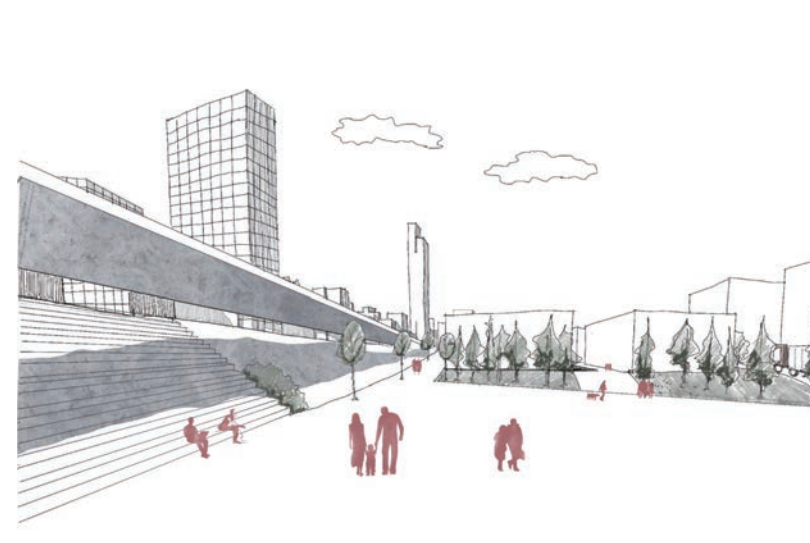
C



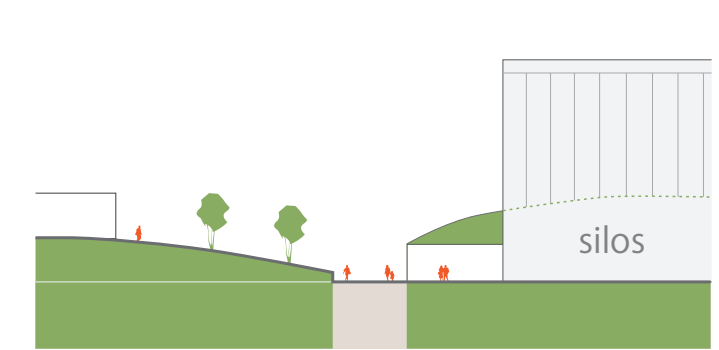
MEMOLIAL SQUARE



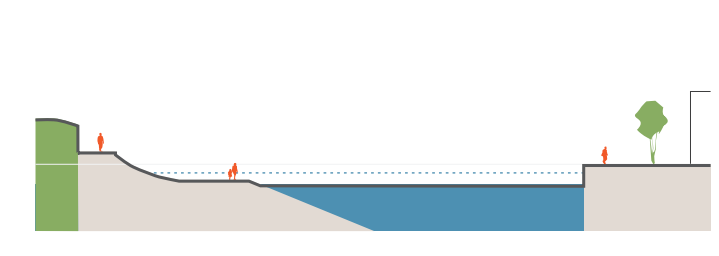
View corridor
The main view corridor connecting Memorial Square and the city centre consists of a wide path surrounded by trees.



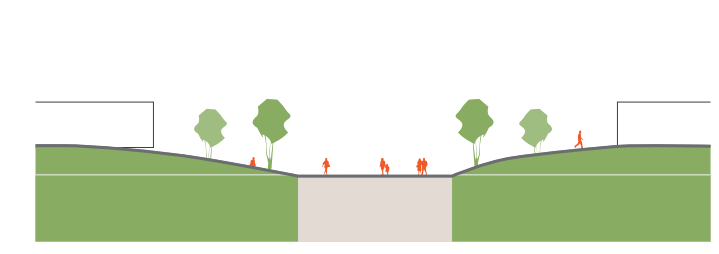
Seamless Memorial Square
A landscape that integrally combines the silo, gallery, memorial hall and seaside park, and provides atonement and healing for the series of experiences (incidents).



1. Silos and landscape architecture



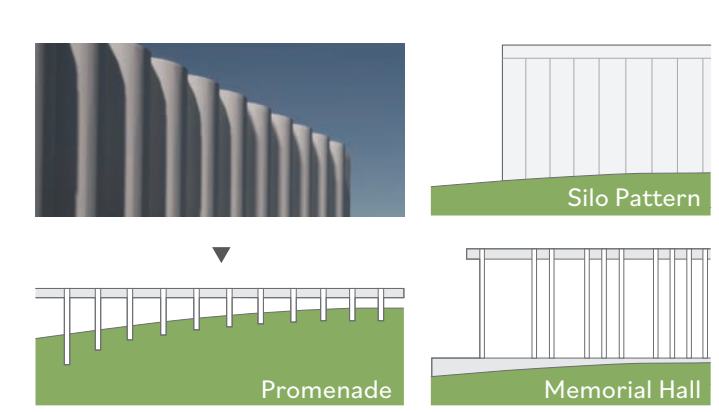
2. Seaside park



3. Inner axis of the square



4. The way from city area to the square



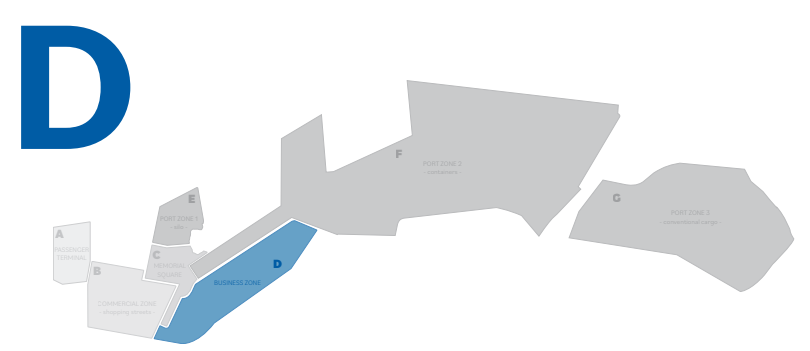
5. Exterior design



C: MEMORIAL SQUARE

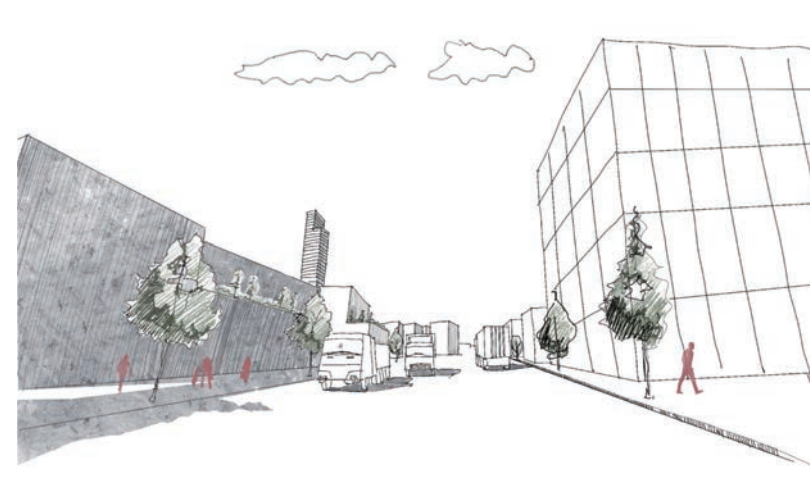


D

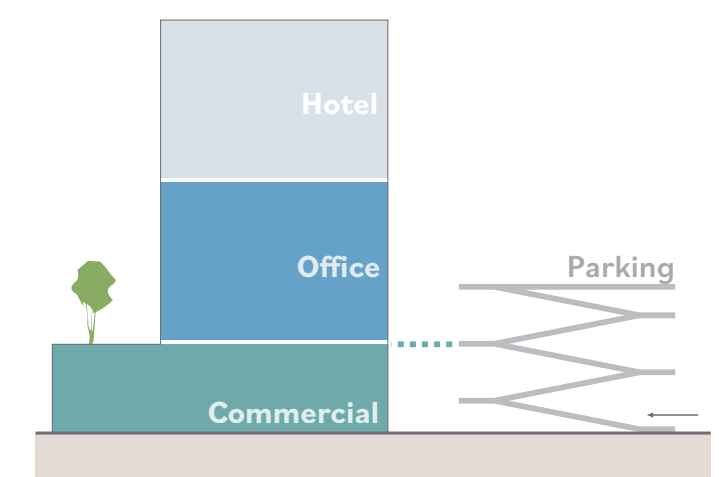


MULTI-FUNCTIONAL ZONE

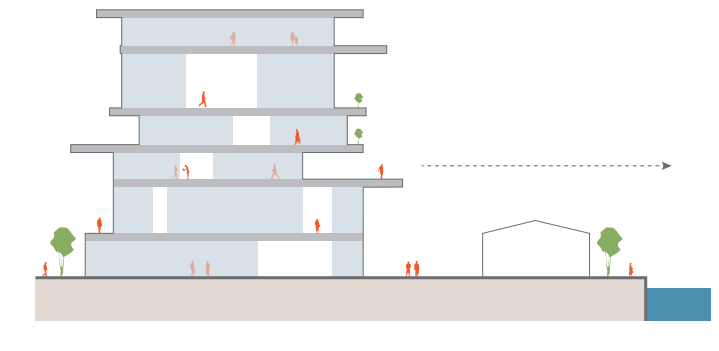
- complex -



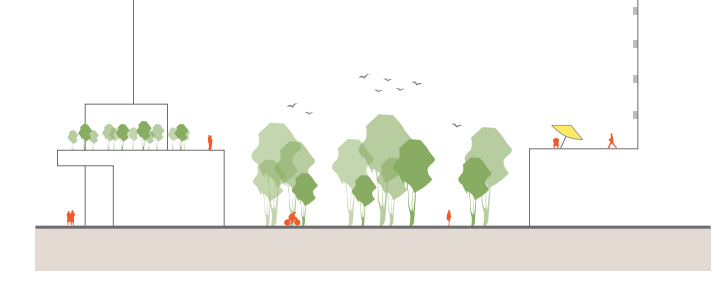
Multi-functionality of the port city
Diverse nature, outdoor spaces and multi-layered facilities invite guests, office workers, and citizens to the port city.



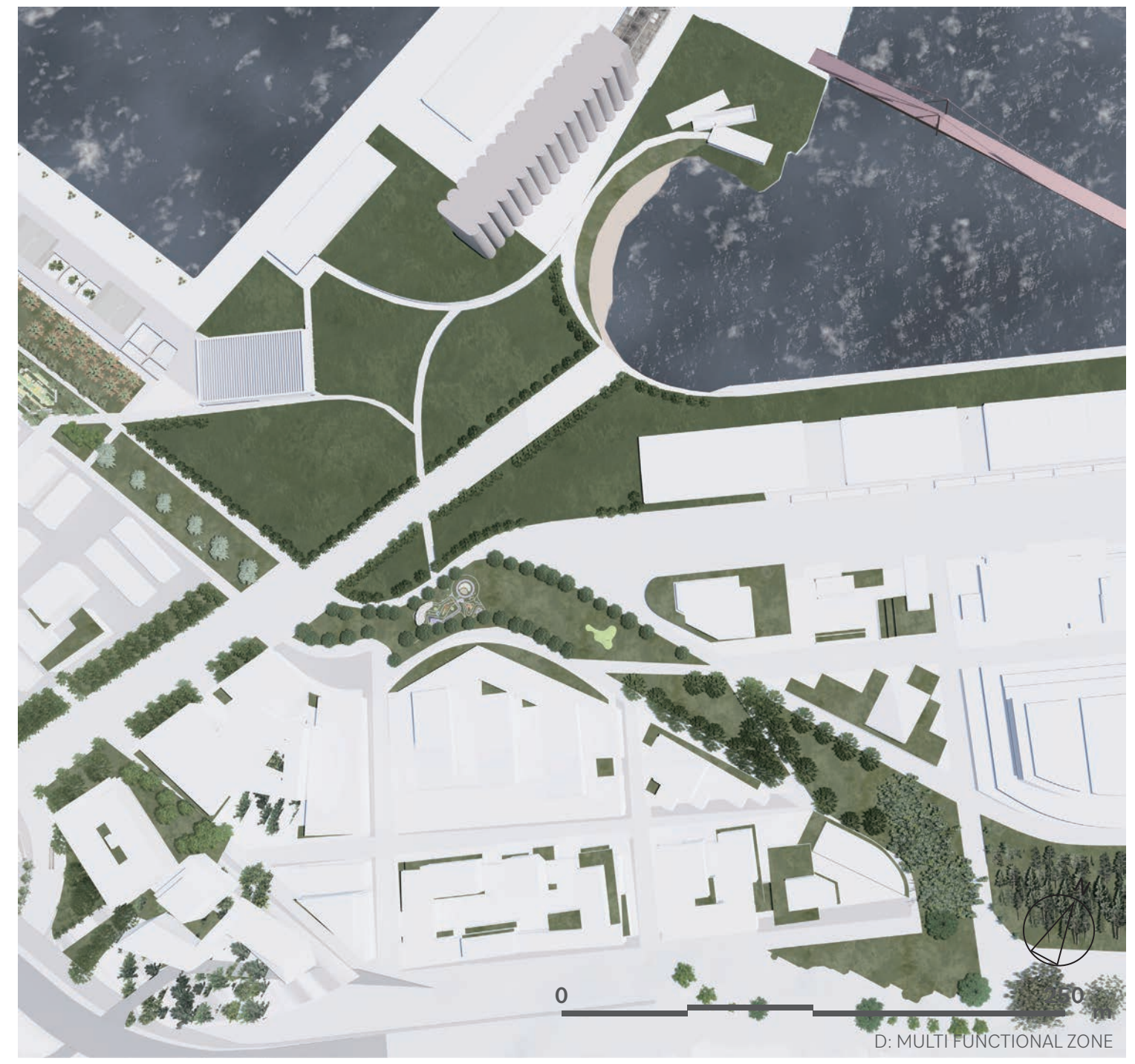
1. Mixed use



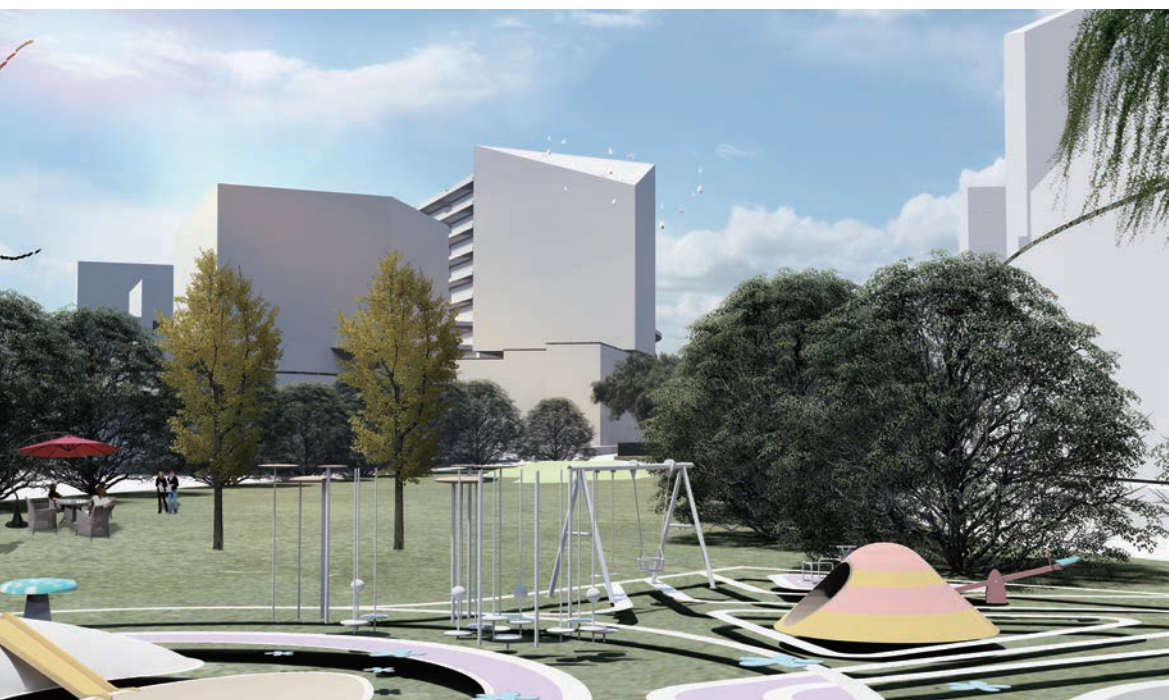
2. Building typology - multi-layered -



3. Diverse exterior space



D: MULTIFUNCTIONAL ZONE



BEIRUT PORT: CROSS SECTION

