



By Priyadharshini



Health & Well-being



Climate Response



Architectural Character

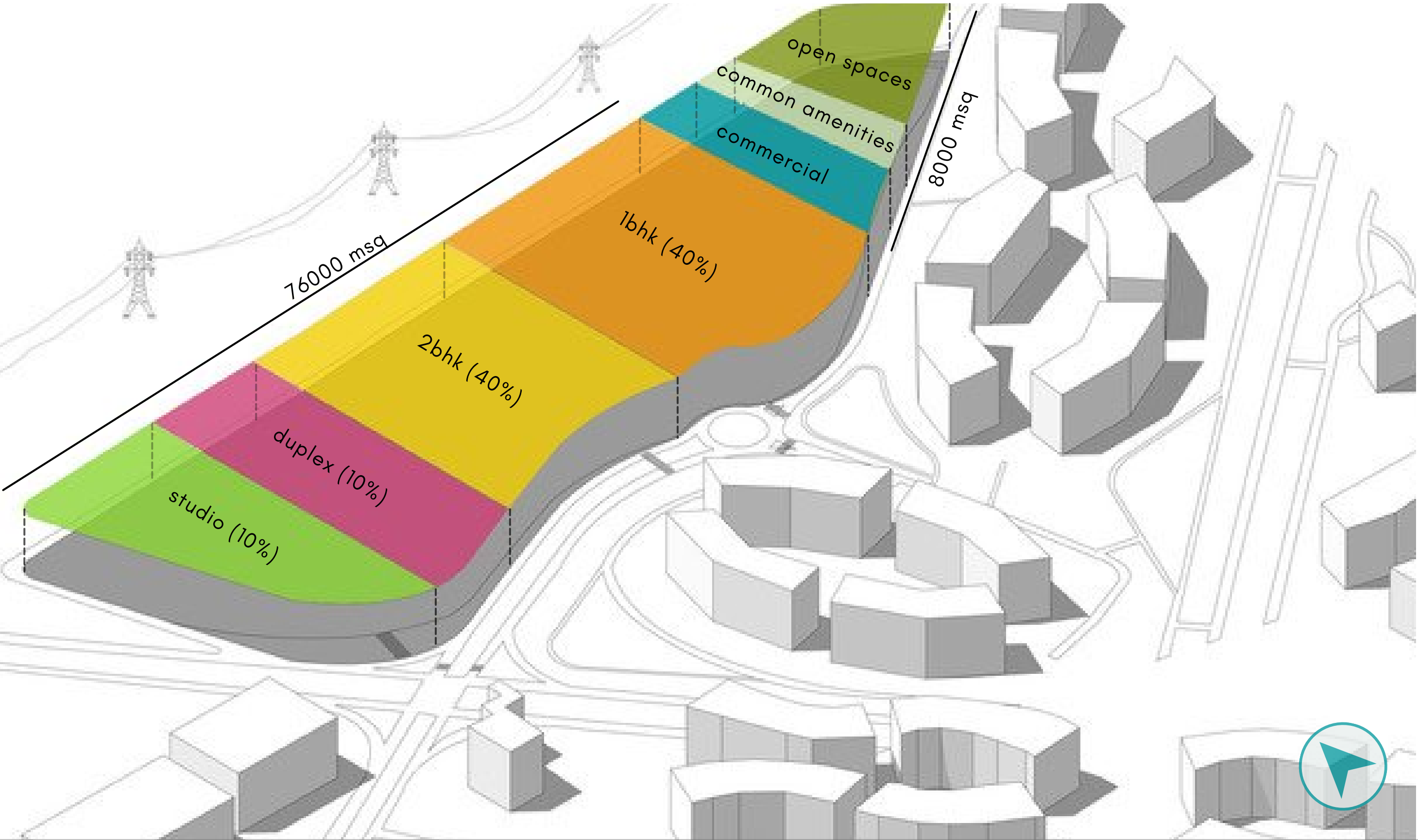


Social Considerations

# MIND MAPPING

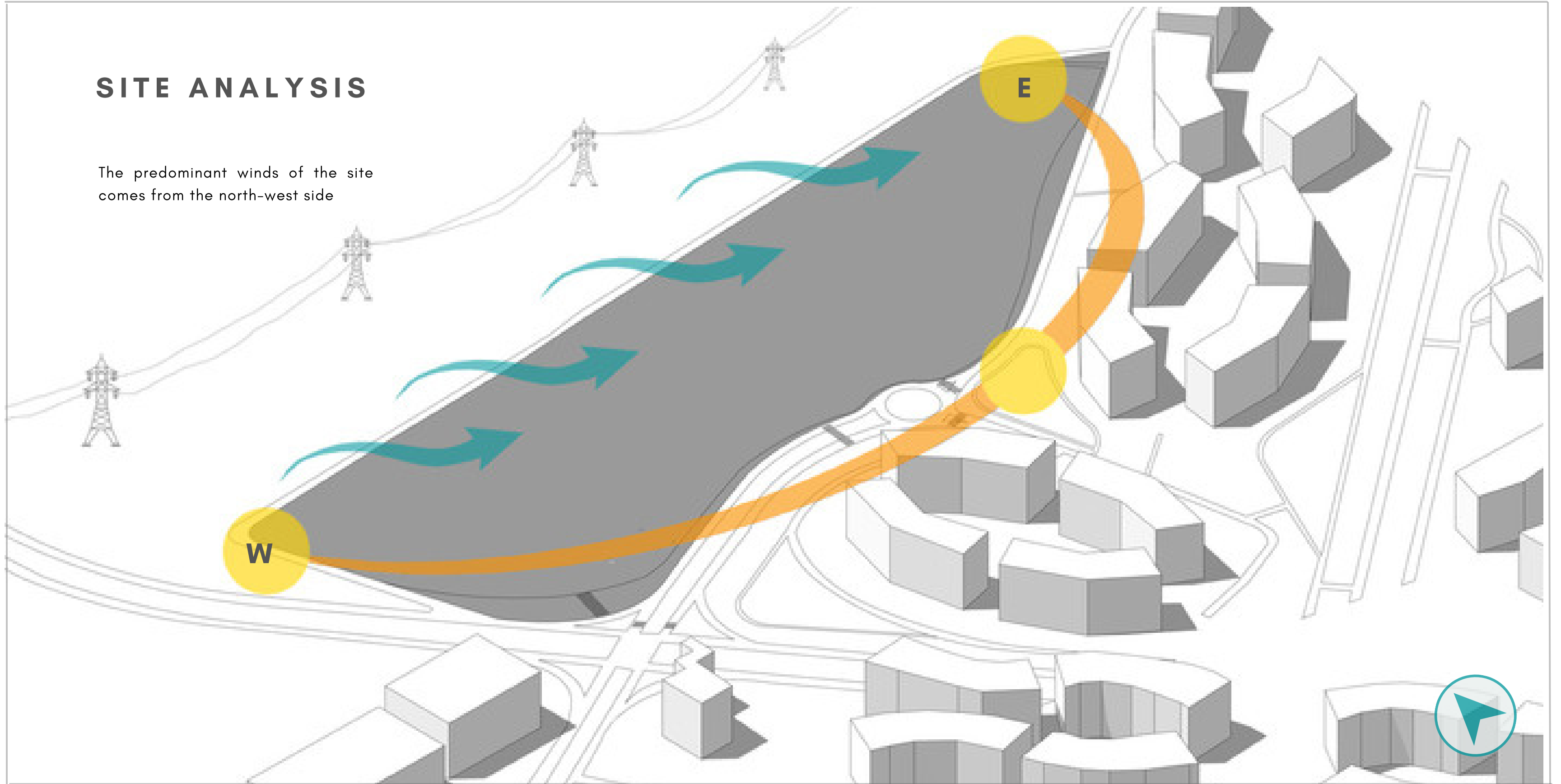


# BRIEF

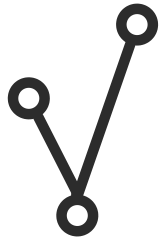


# SITE ANALYSIS

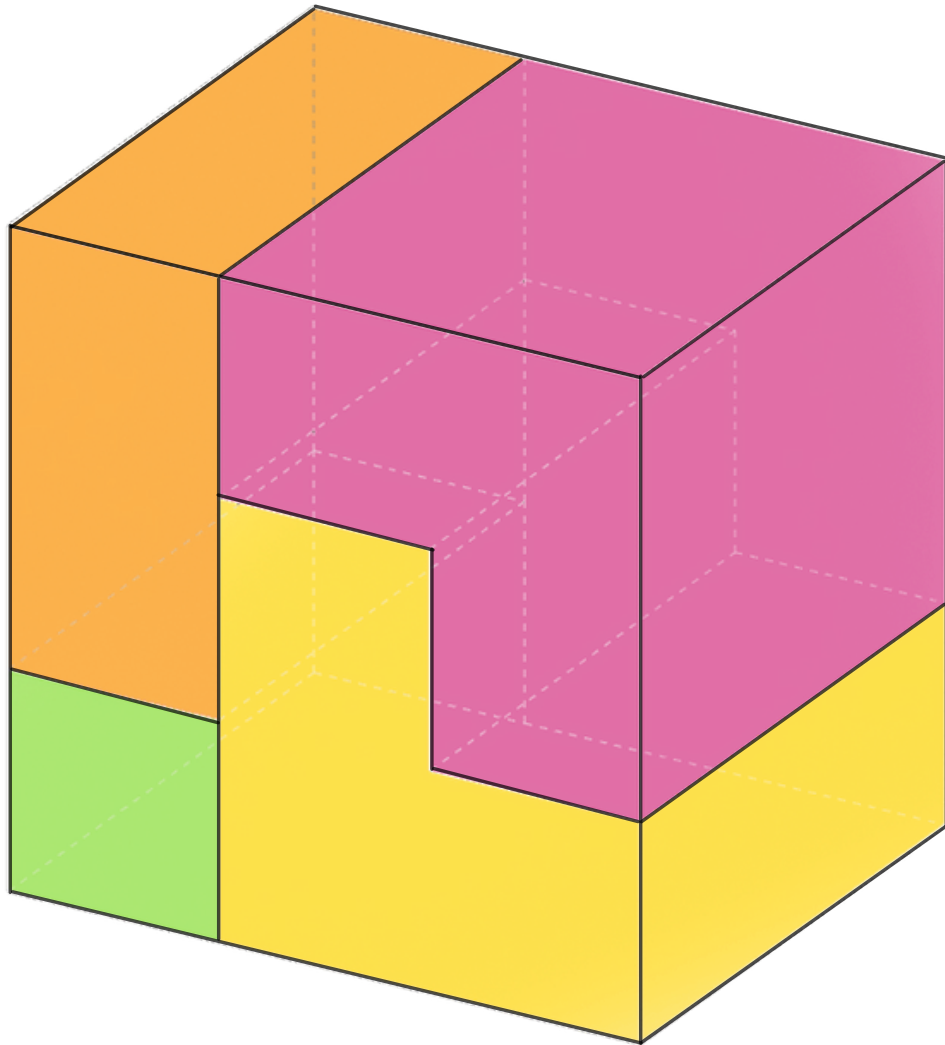
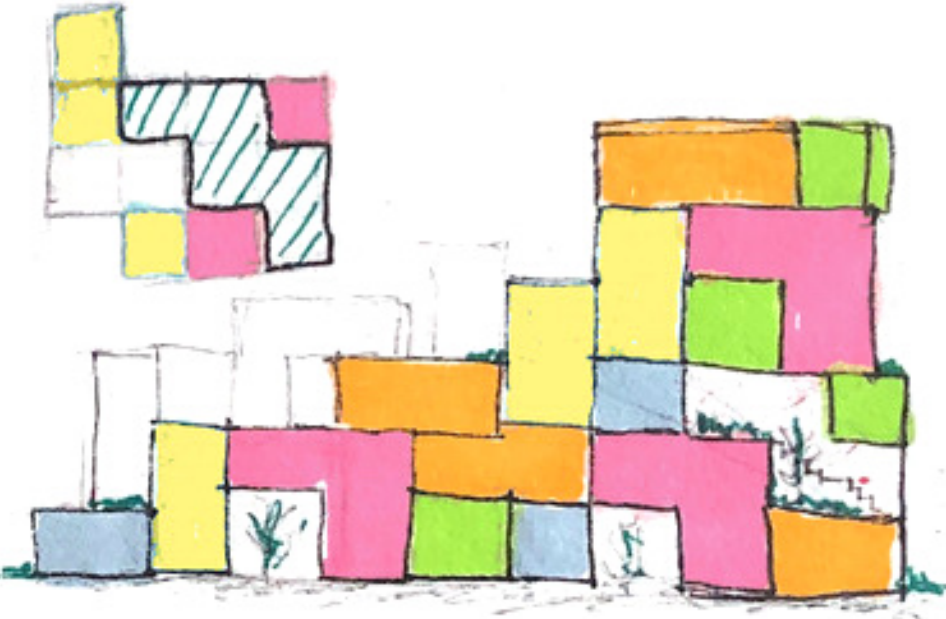
The predominant winds of the site comes from the north-west side



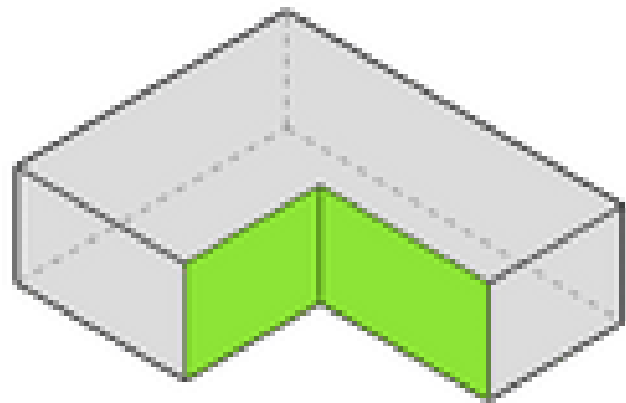
SOCIAL VALLEY



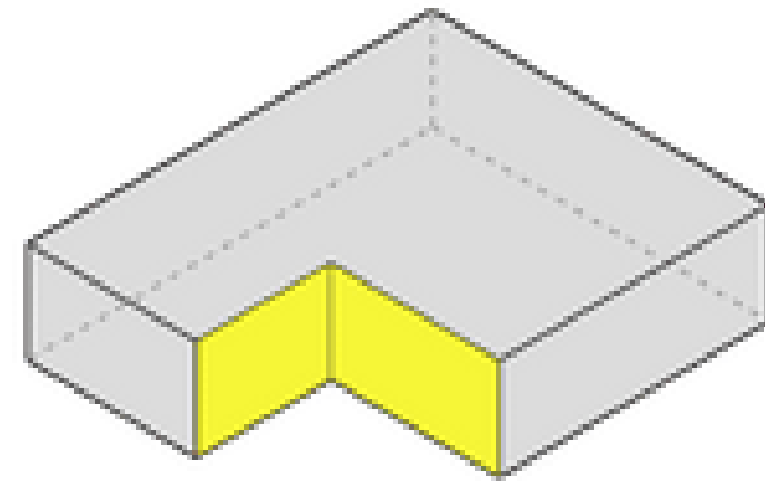
WEAVE



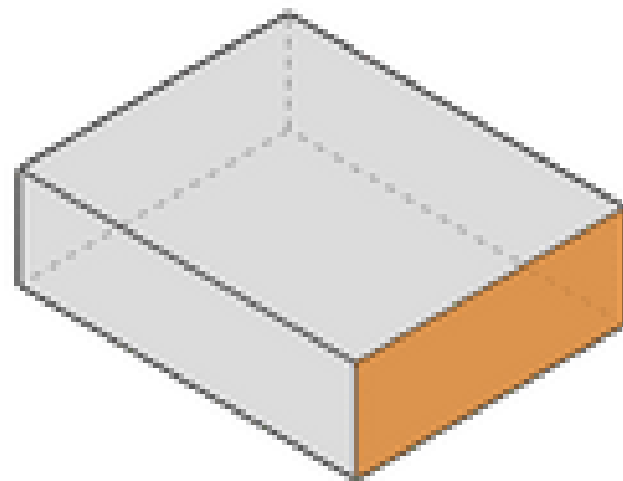
# MODULES



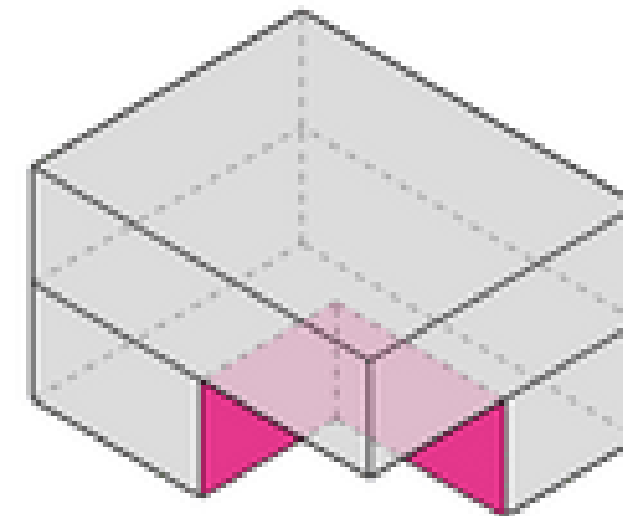
**STUDIO (60M2)**



**2BHK (100M2)**



**1 BHK (80M2)**



**DUPLEX (140M2)**



# ITERATION 1

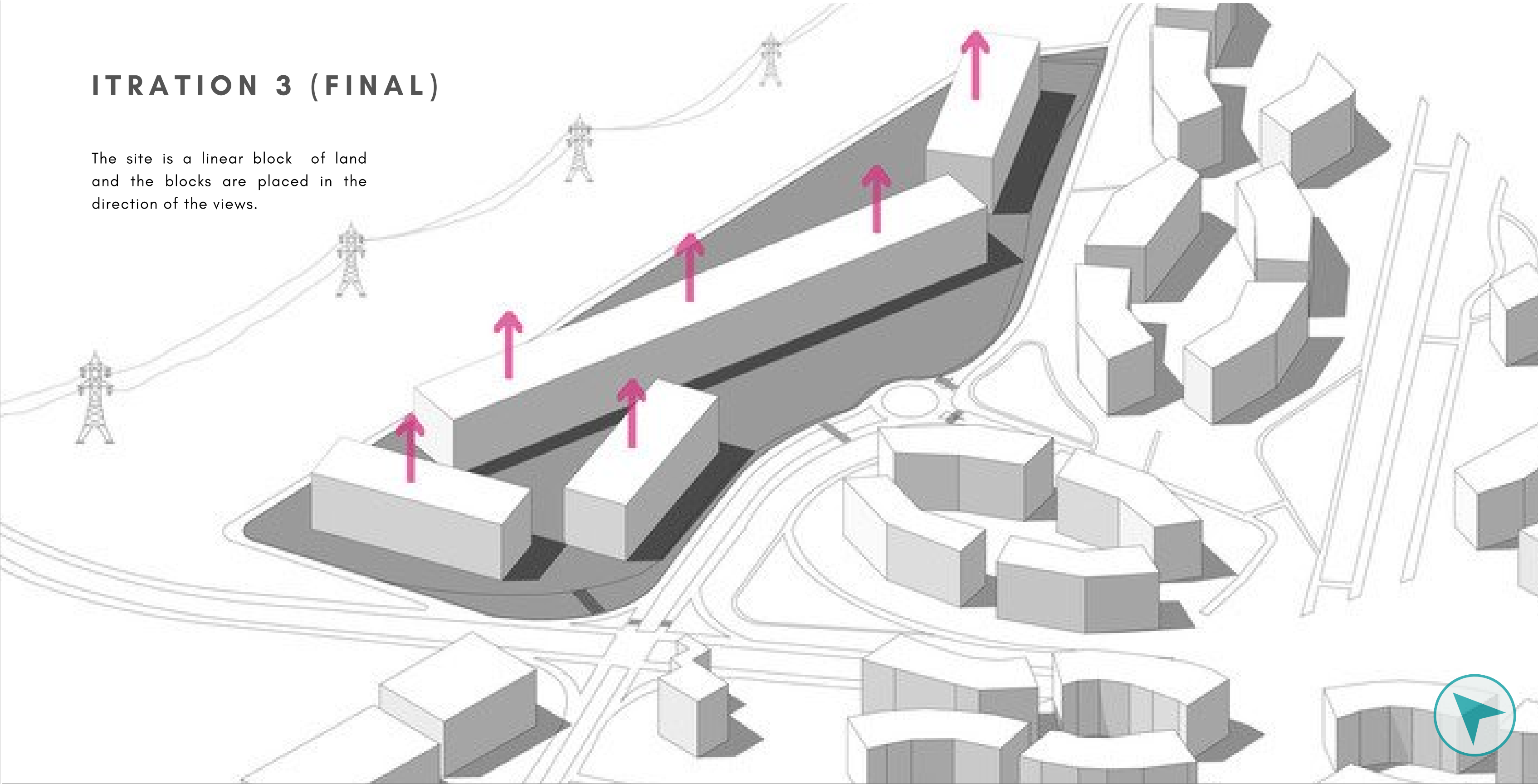


ITERATION 2



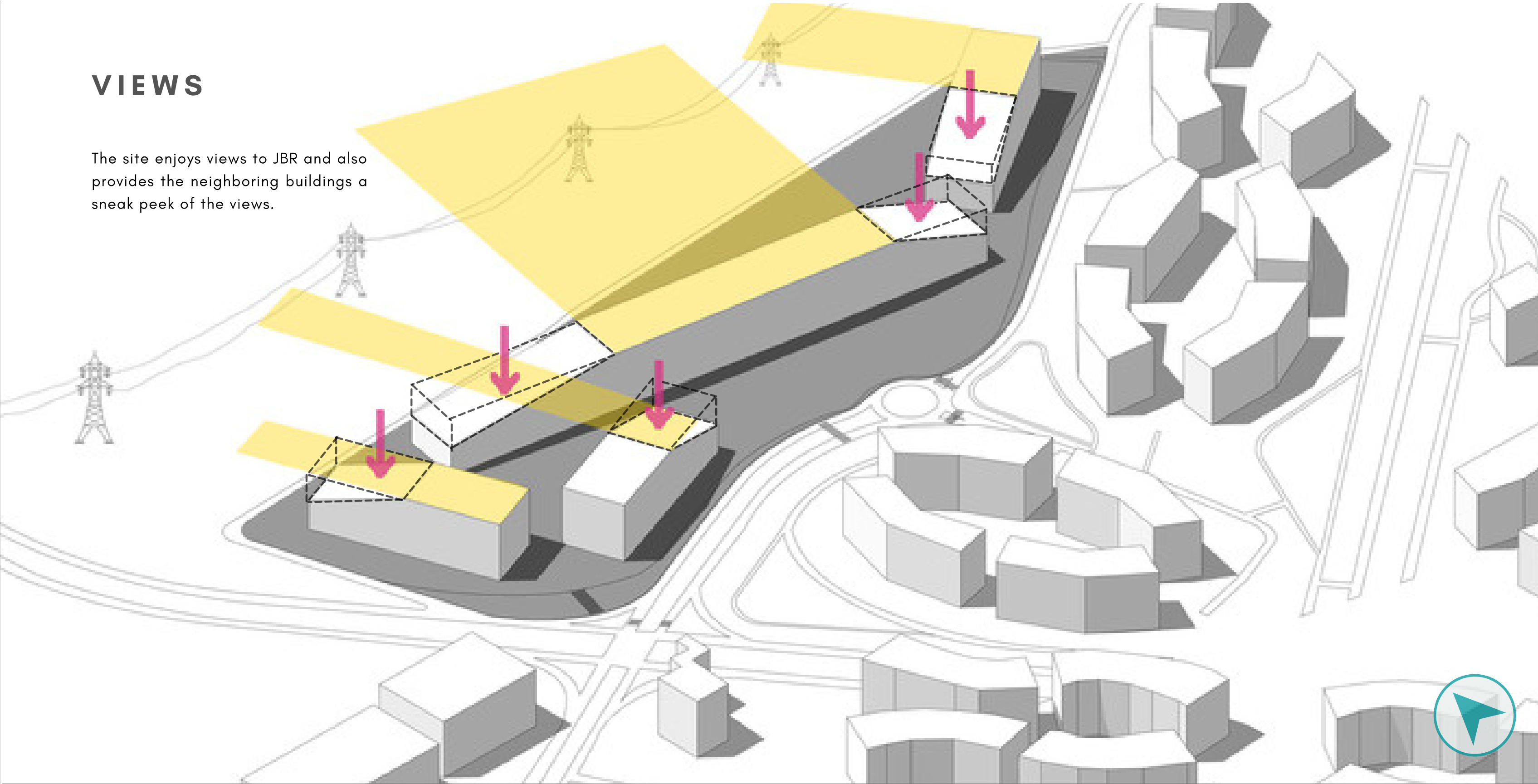
# ITERATION 3 (FINAL)

The site is a linear block of land and the blocks are placed in the direction of the views.



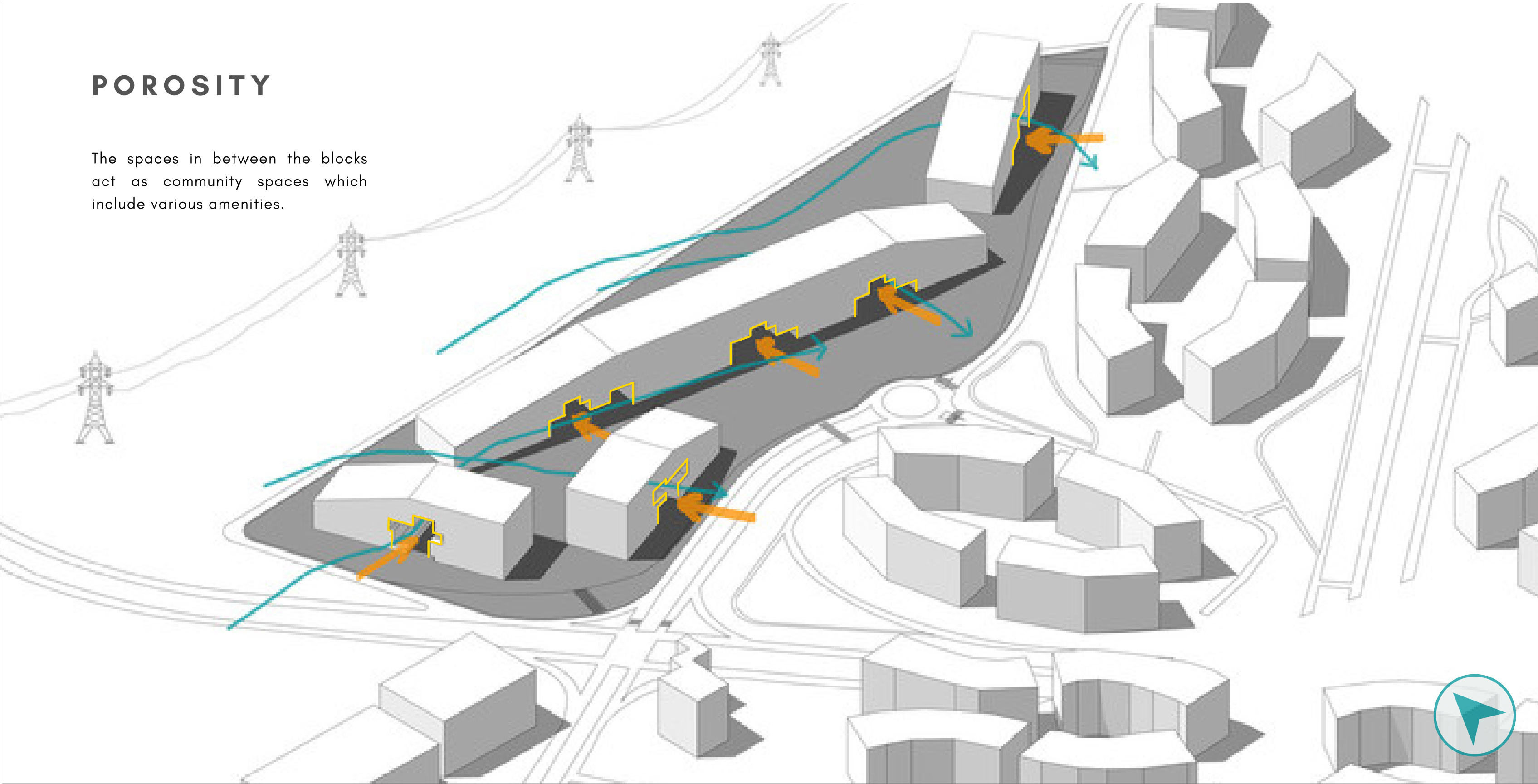
# VIEWS

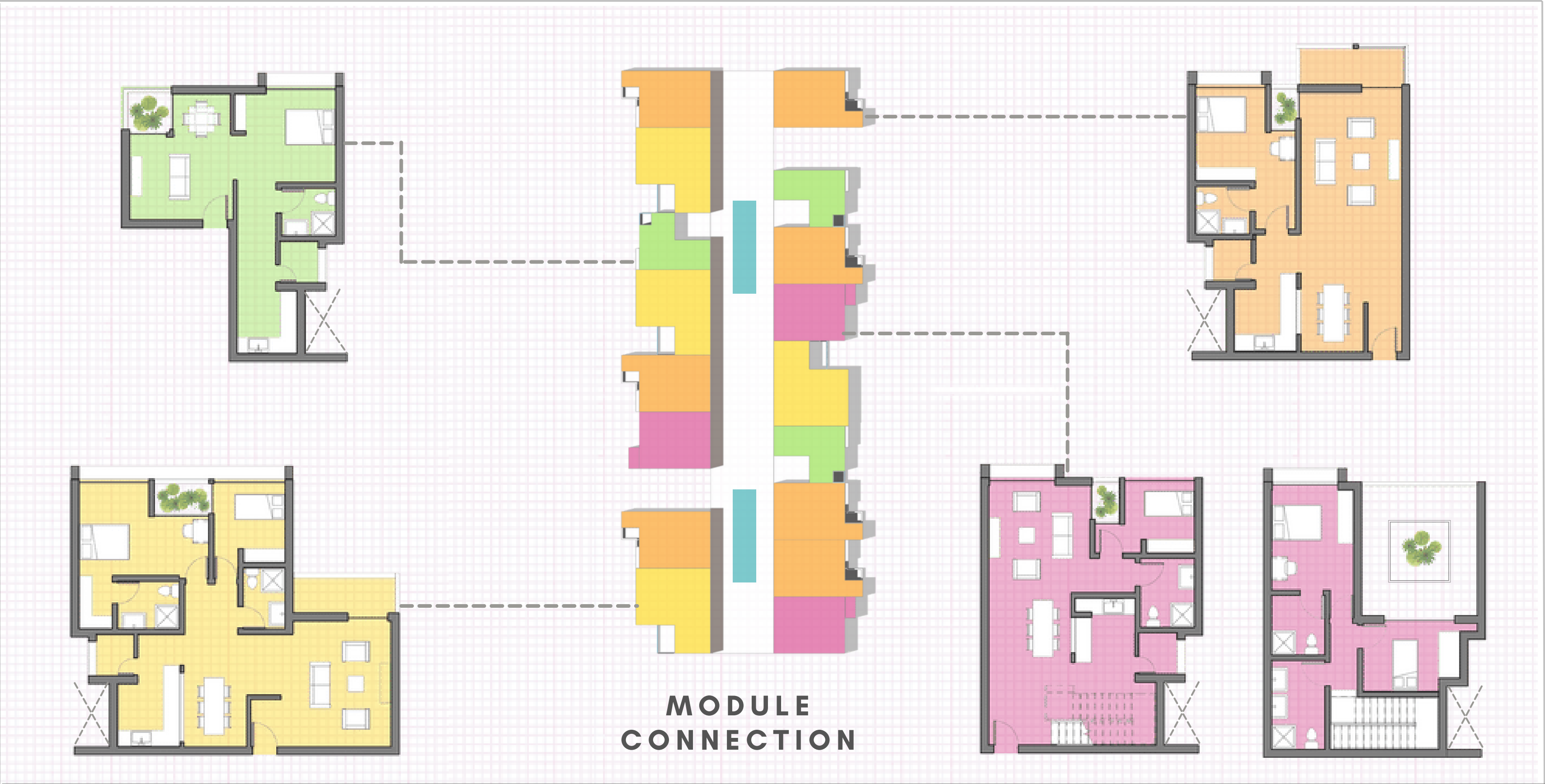
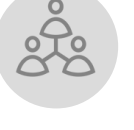
The site enjoys views to JBR and also provides the neighboring buildings a sneak peek of the views.



# POROSITY

The spaces in between the blocks act as community spaces which include various amenities.







**MODULE  
CONNECTION**

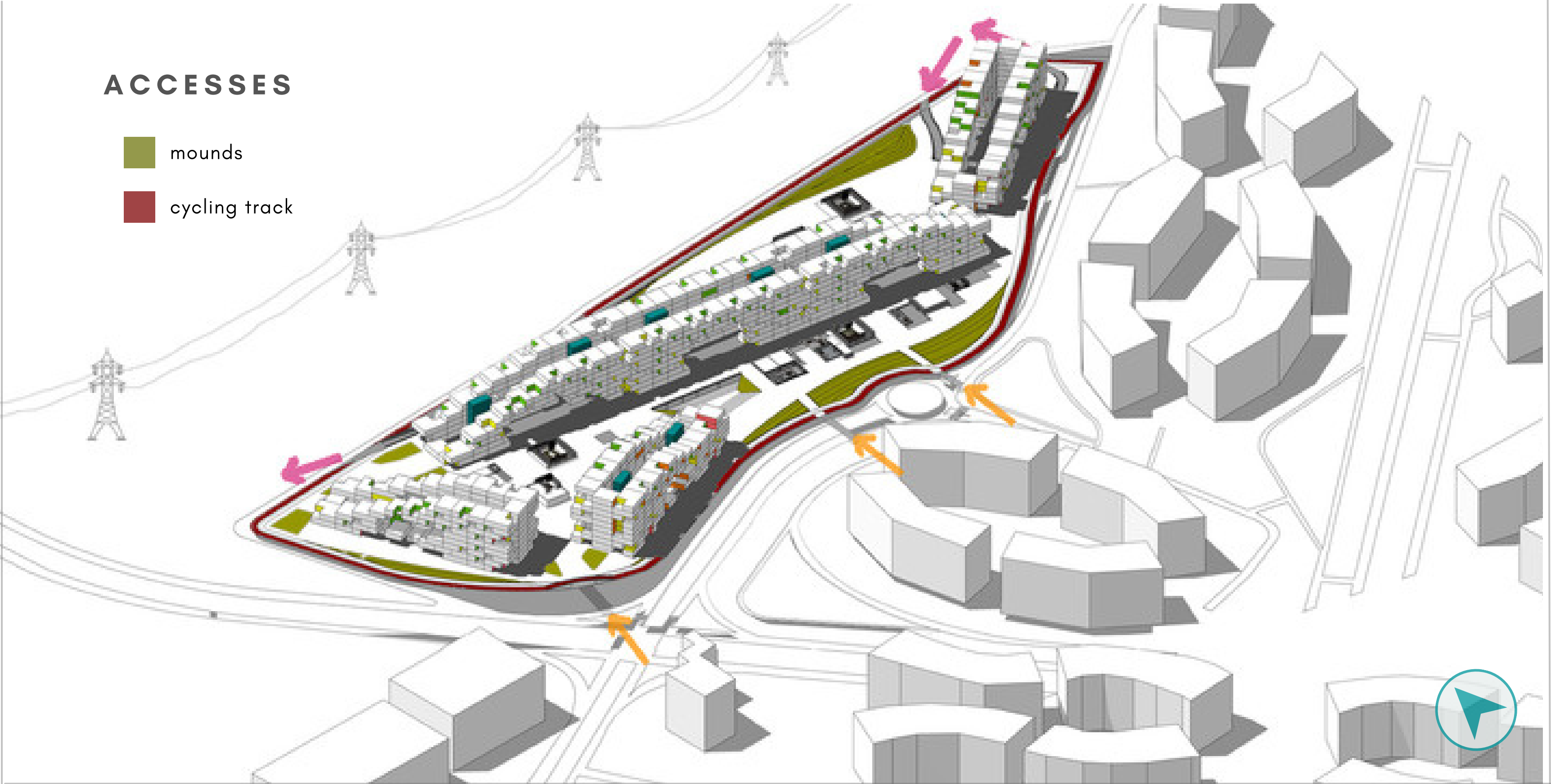
# MODULES

- studio
- 1 bhk
- 2 bhk
- duplex
- core

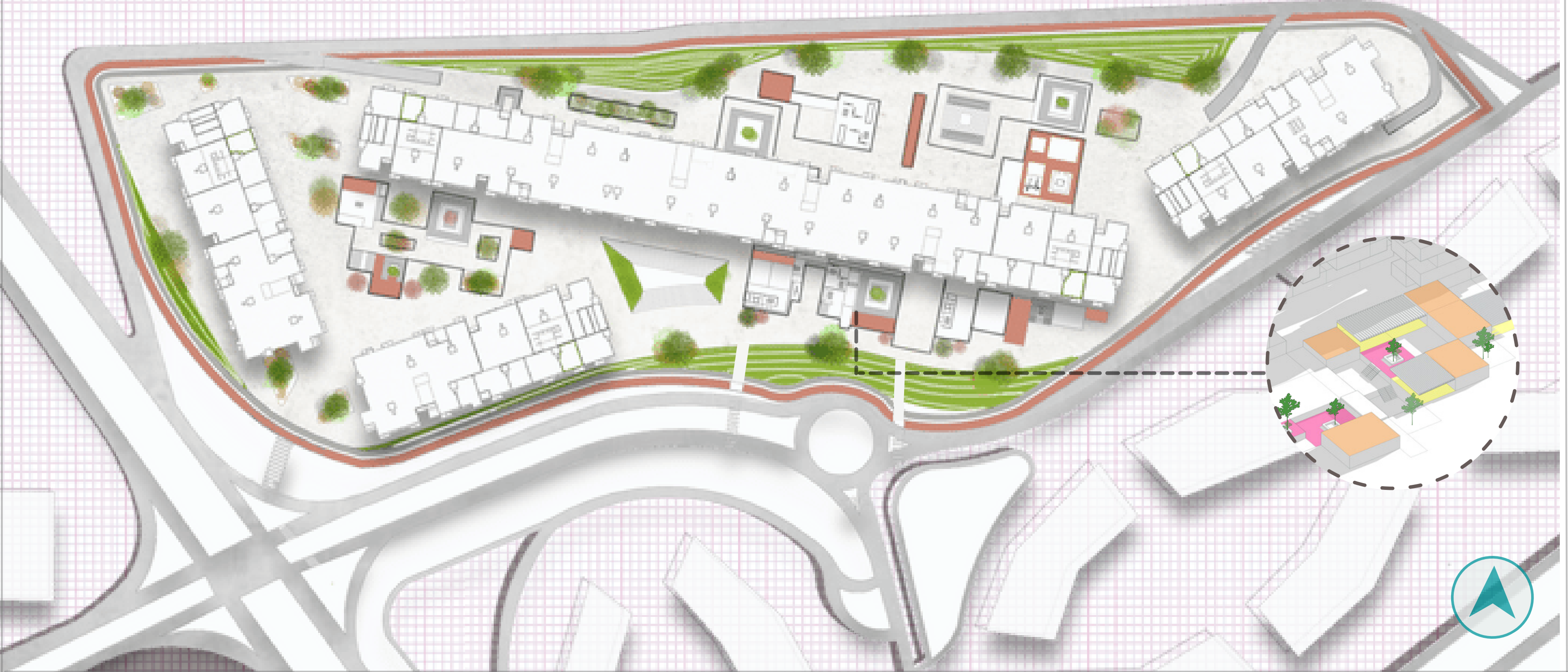


# ACCESSES

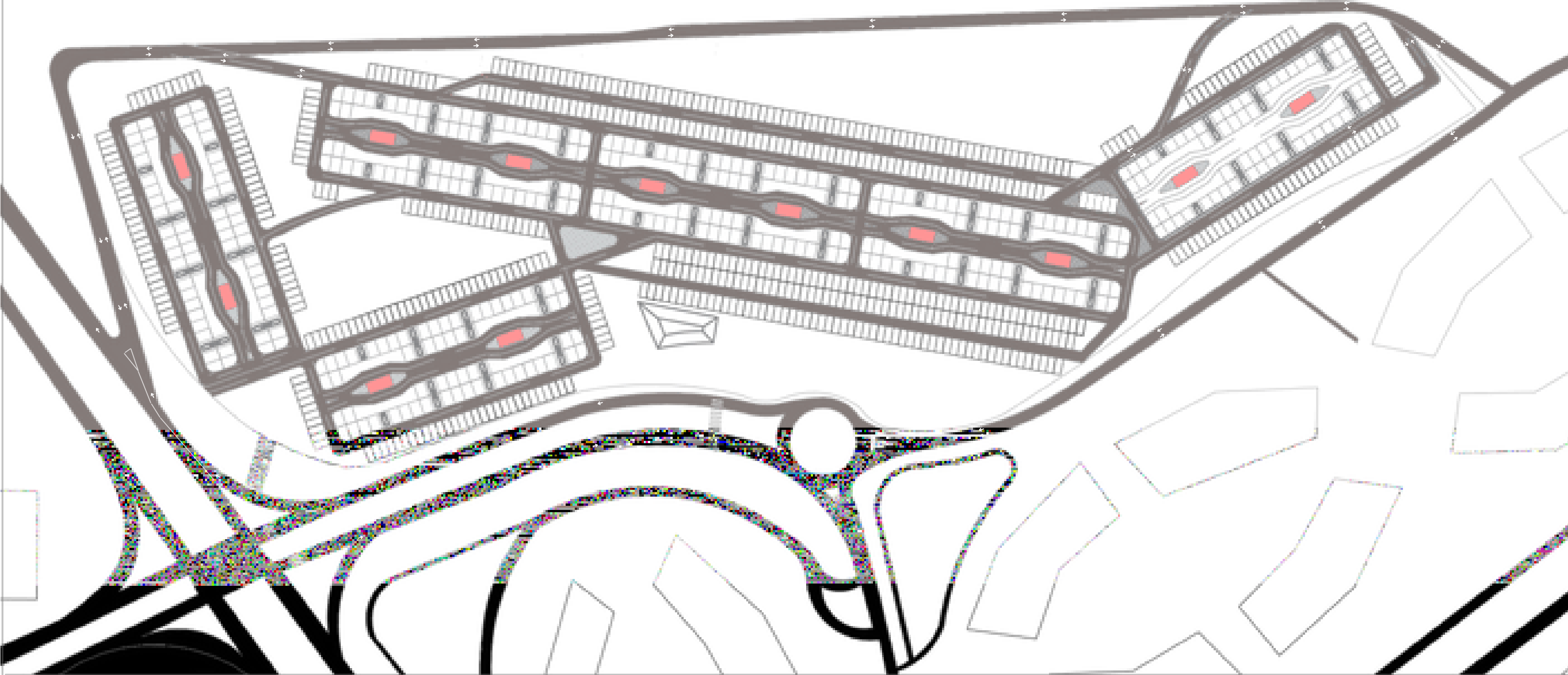
-  mounds
-  cycling track



# SITE PLAN



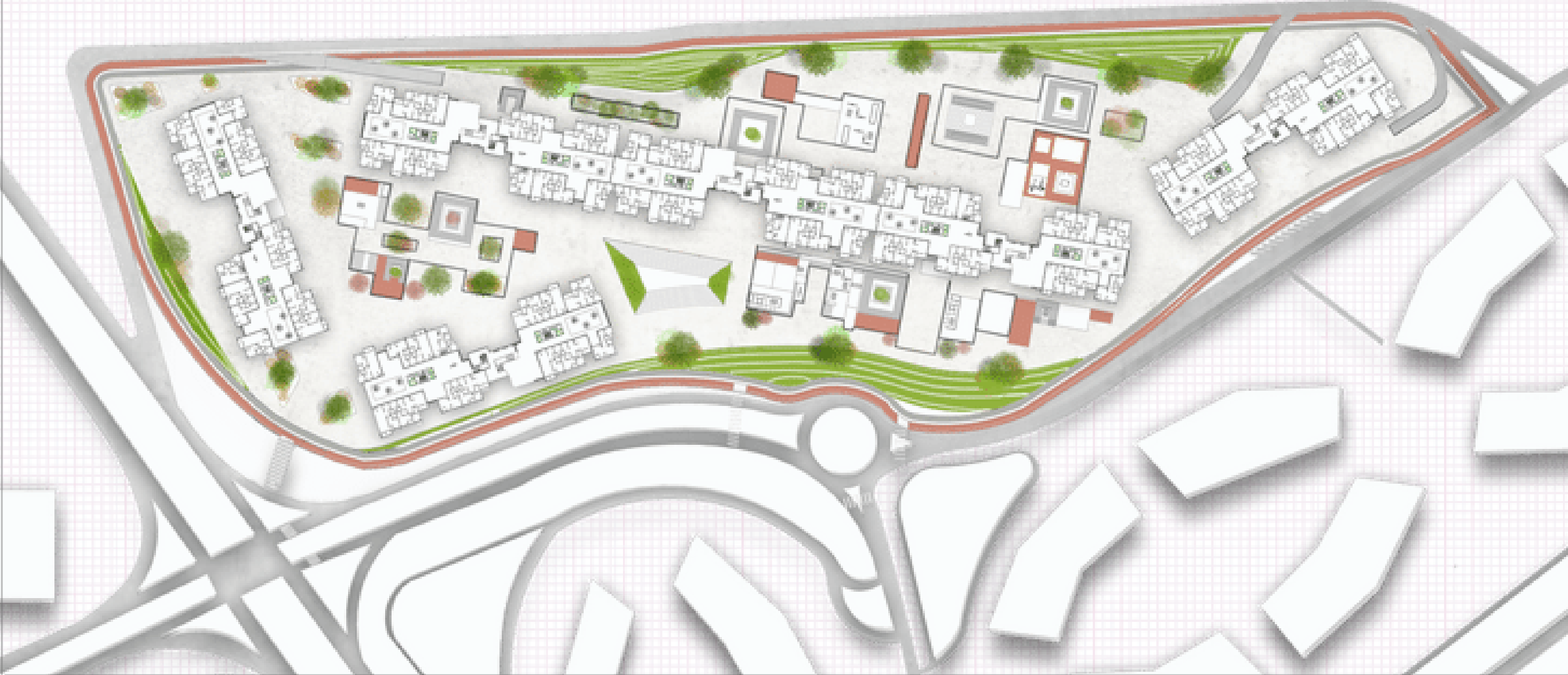
# BASMENT PLAN



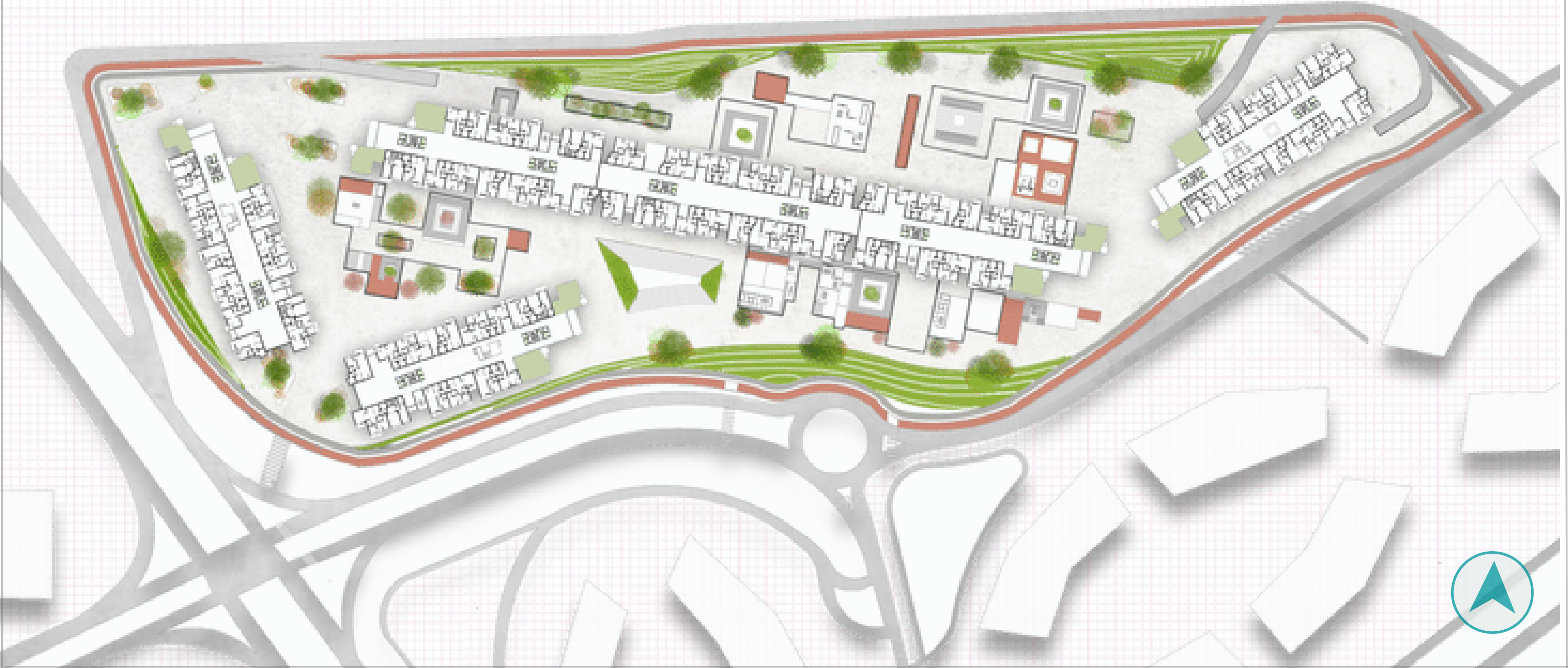
# GROUND FLOOR PLAN



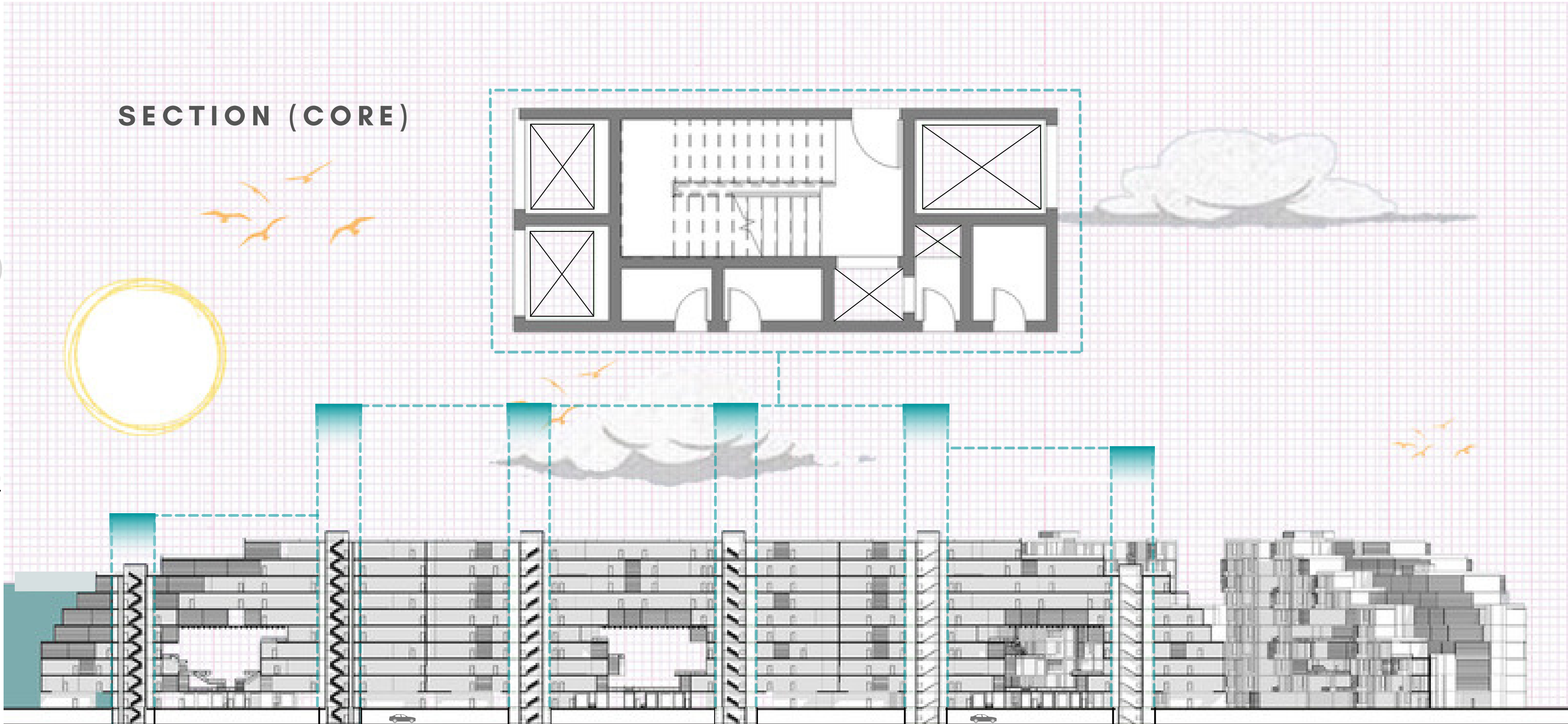
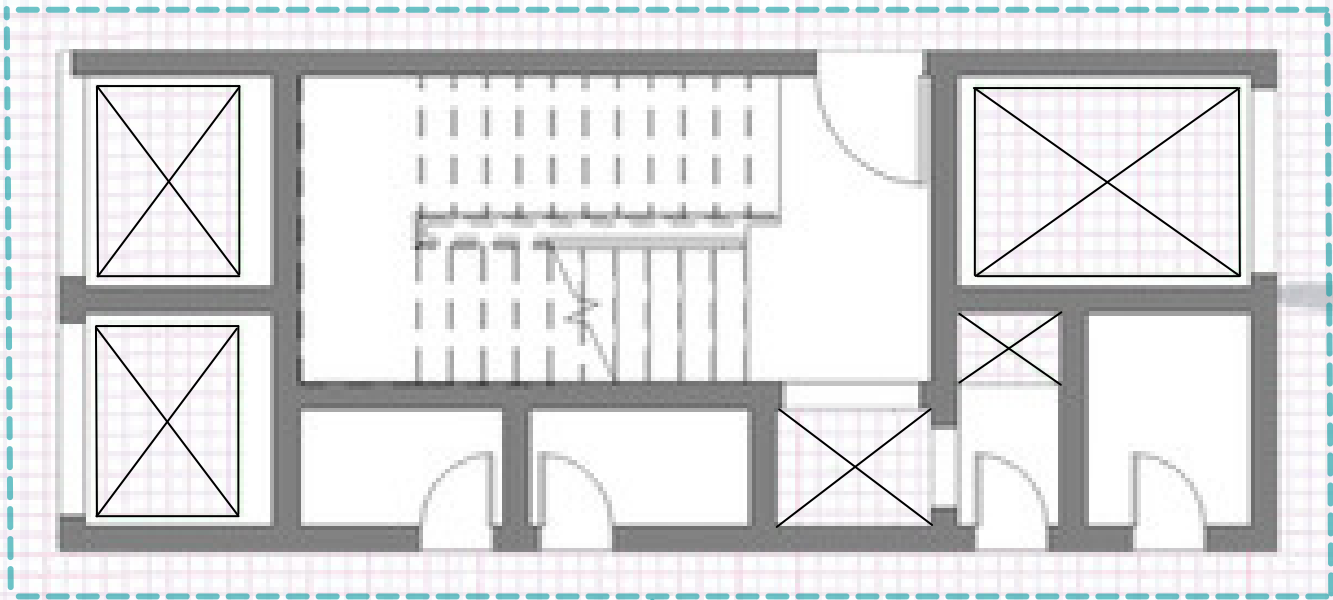
# 2ND FLOOR PLAN



# TYPICAL FLOOR PLAN



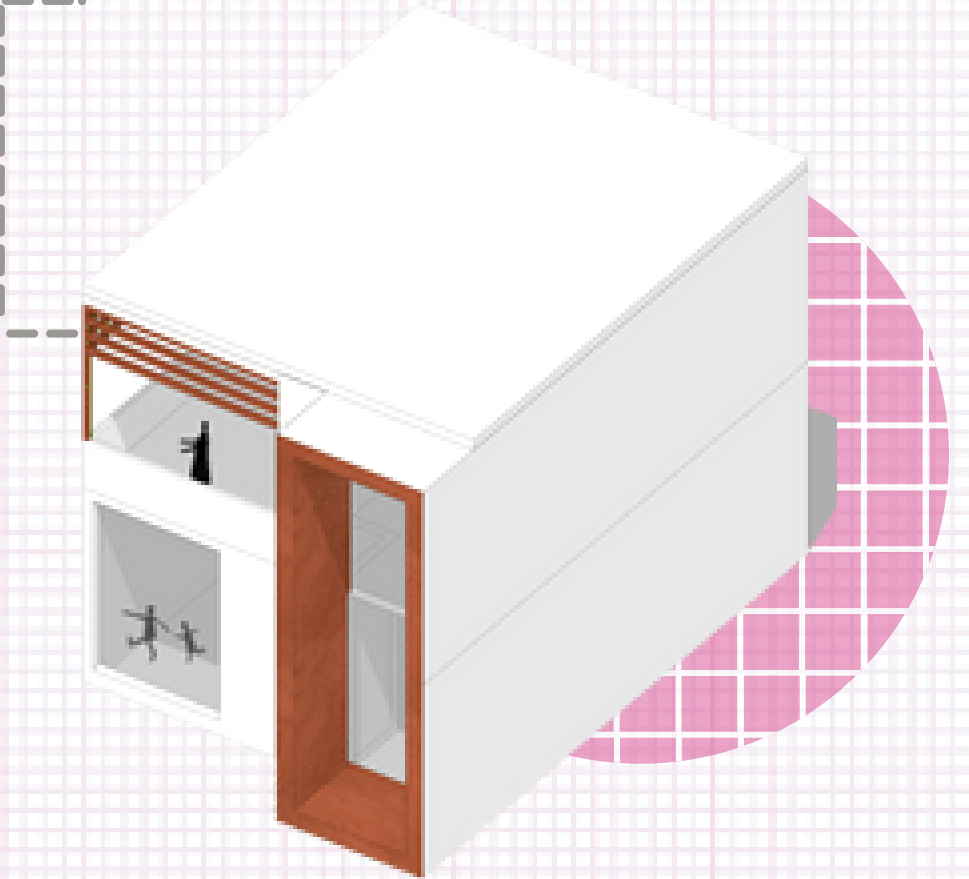
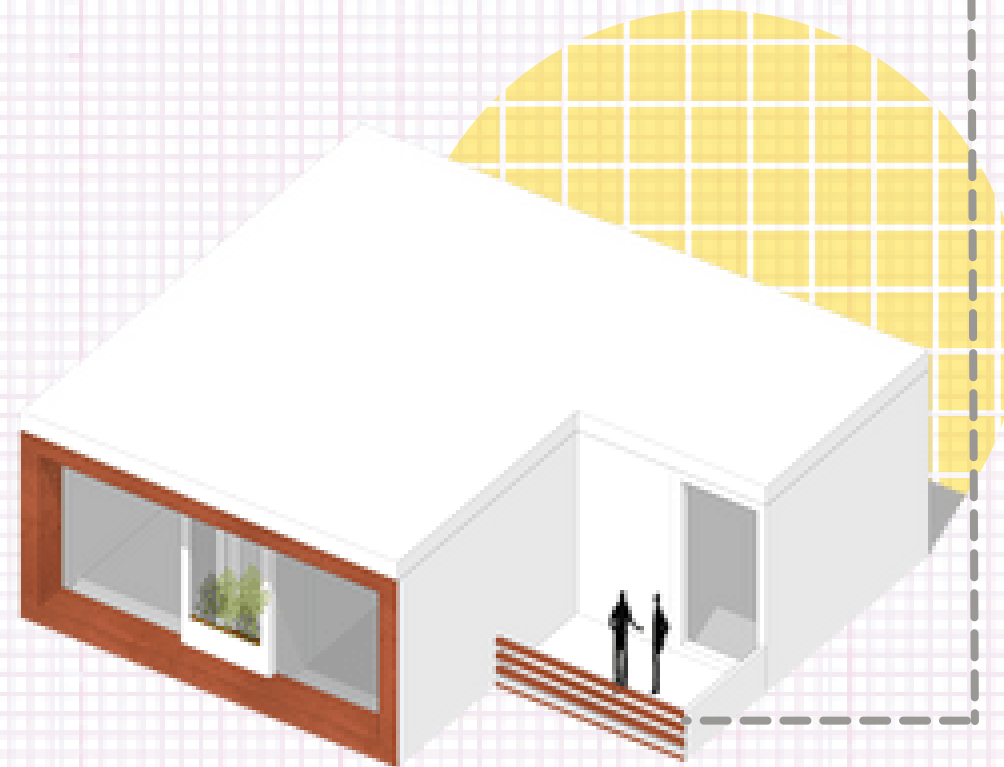
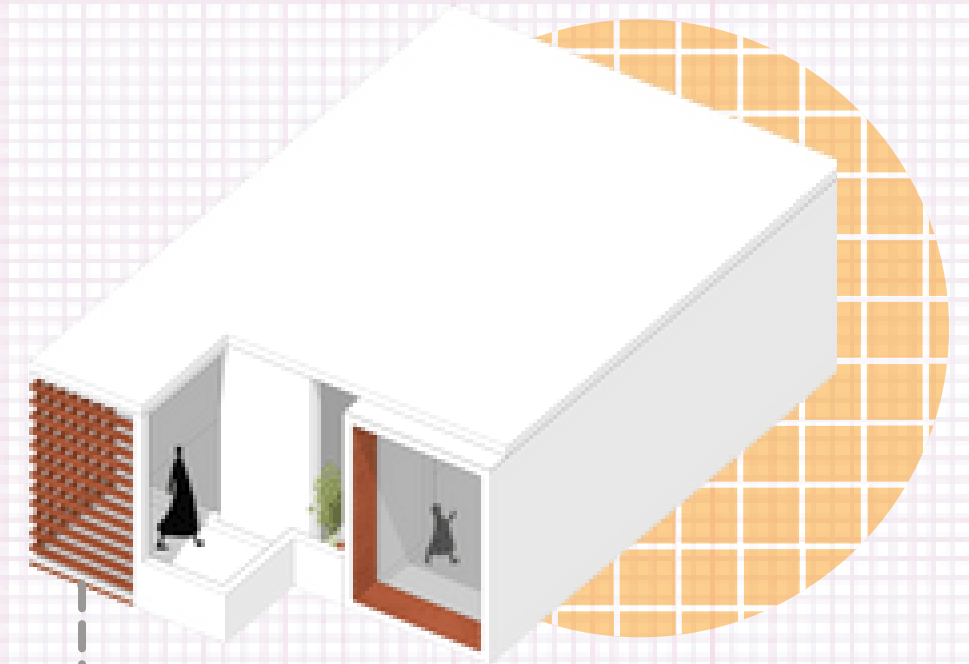
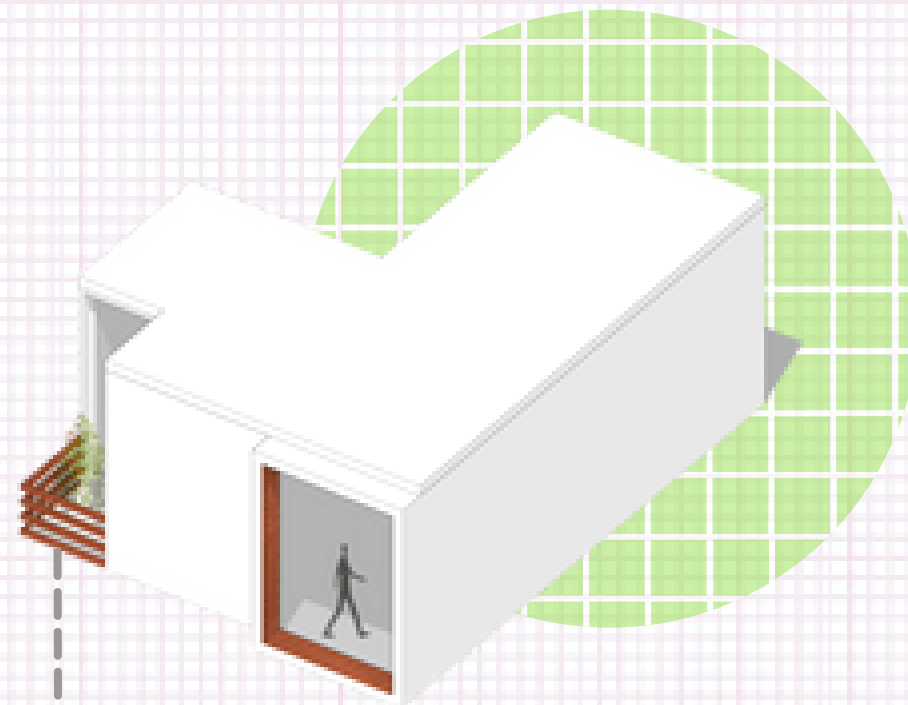
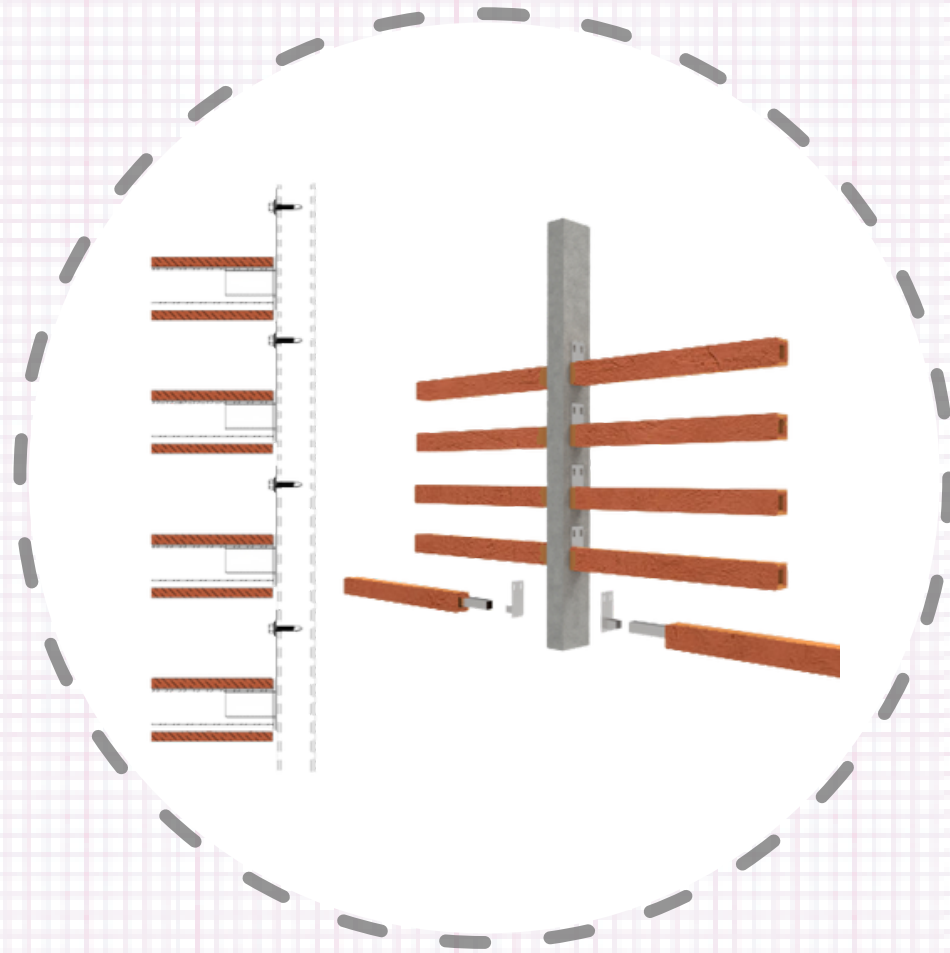
SECTION (CORE)



# SECTION (COMMUNITY SPACE)



## FACADE DETAIL



Terracotta sunscreen is a special terracotta wall cladding product. It is a unique terracotta cladding texture while providing shading for the building.

- Energy Savings
- Thermal Benefits
- Visual Appeal



# 3D OF MODULES



## Smart concrete

A bio-concrete that can heal cracks on its own by adding limestone bacteria to the material. The bacteria can survive in concrete for up to two centuries. They are activated whenever cracks appear, prolonging the lifespan of buildings and infrastructures.



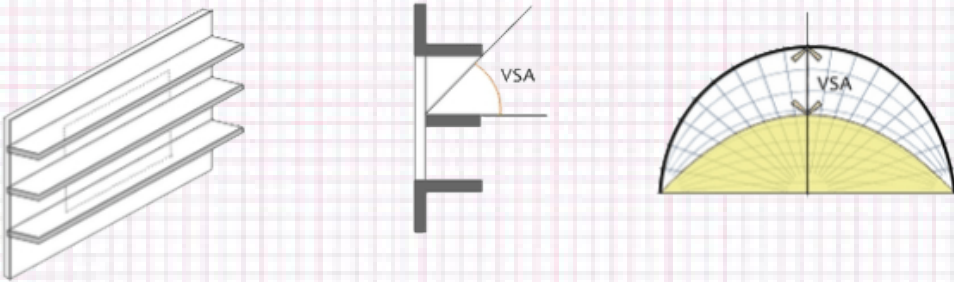
## CONDENSATION SOLUTION

Solar radiation reflecting coating reduces the energy transmission allowing the user to have no fear of overheating.

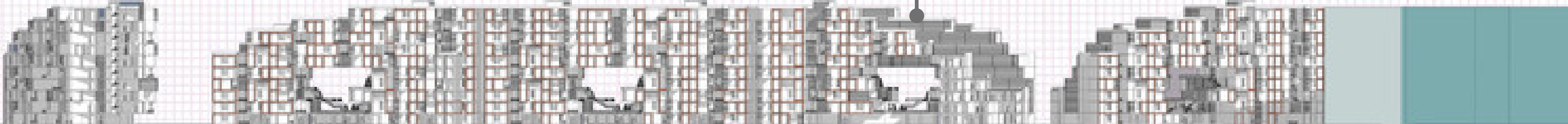
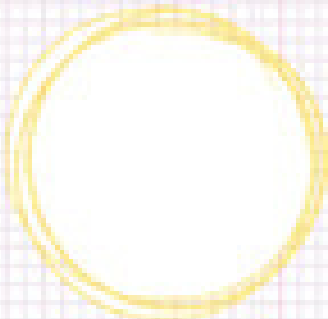
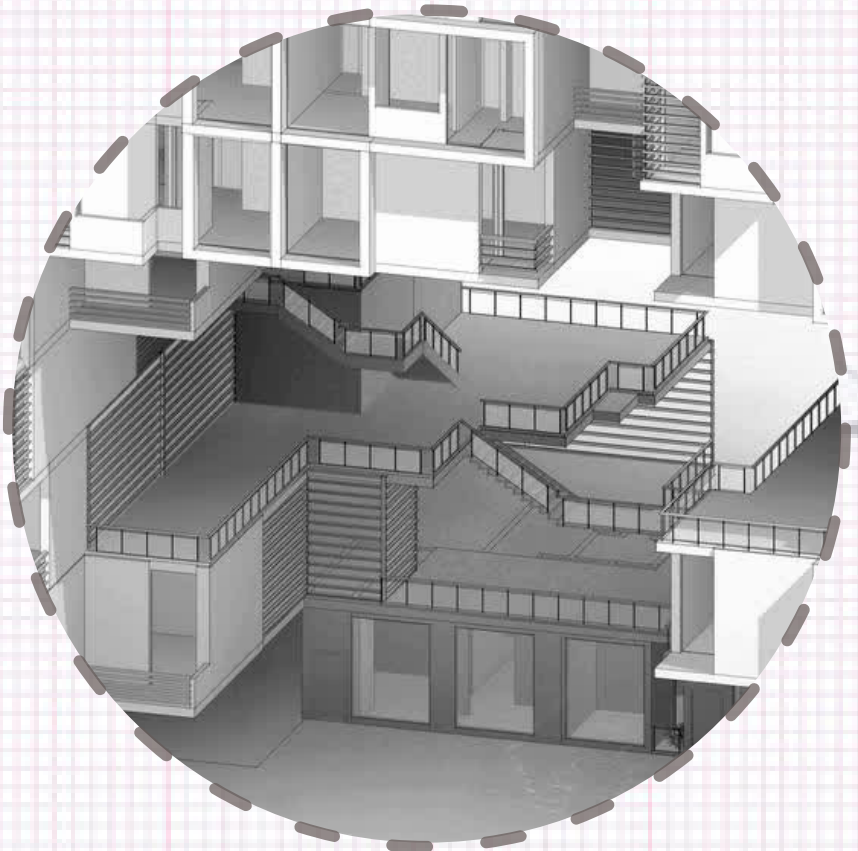


# HORIZONTAL SHADING

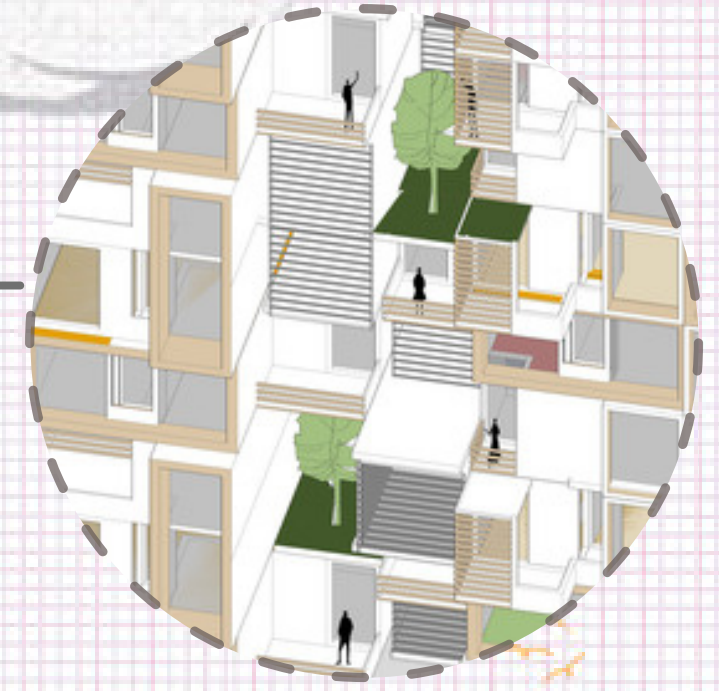
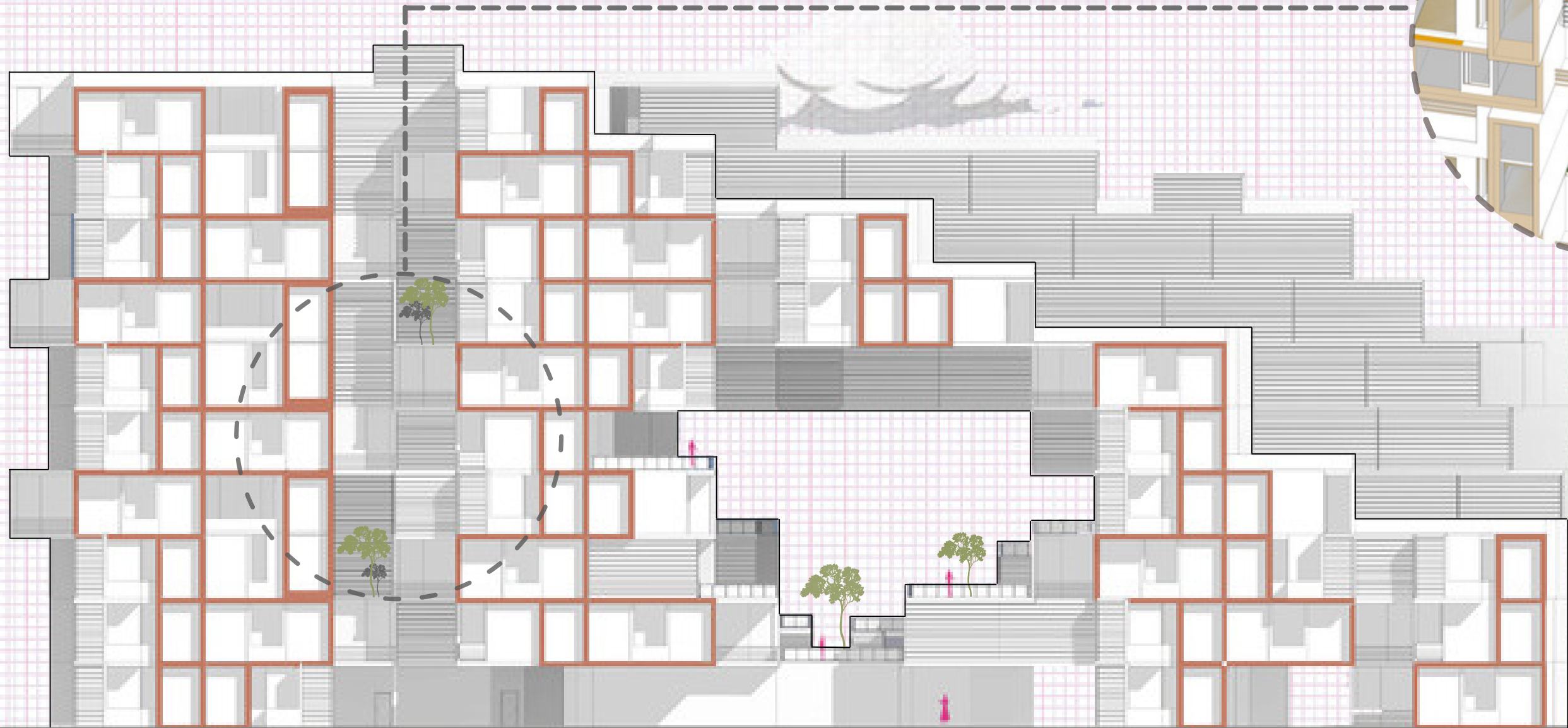
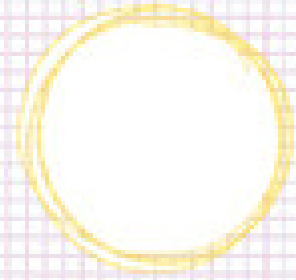
Horizontal shading devices protect from sun at high angles and opposite to the wall to be shaded such as north and south sides.



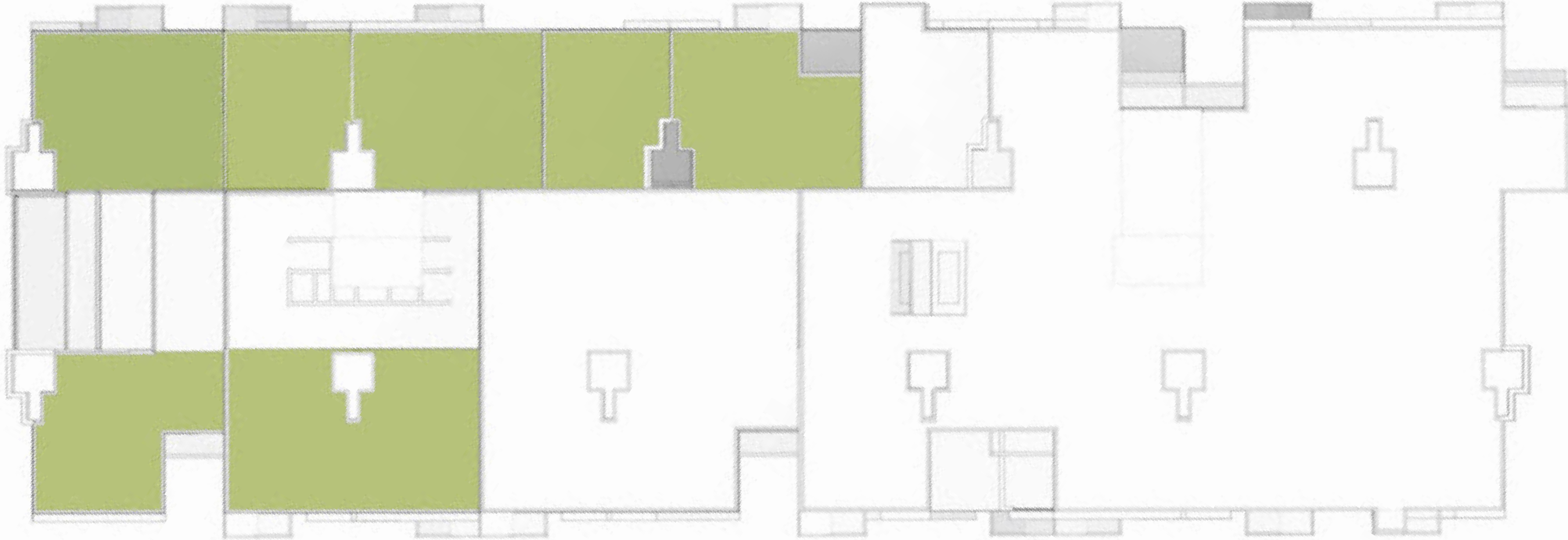
Shading mask of horizontal shading device



# ELEVATION



# TERRACES



# PRIVATE + PUBLIC SOCIAL SPACES



# TERRACES DETAIL



# PLANT PALLETE

23 m

date palm



frangipani

bougainvillea

fountain grass

6 m

4m

1m

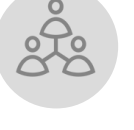
mound

footpath

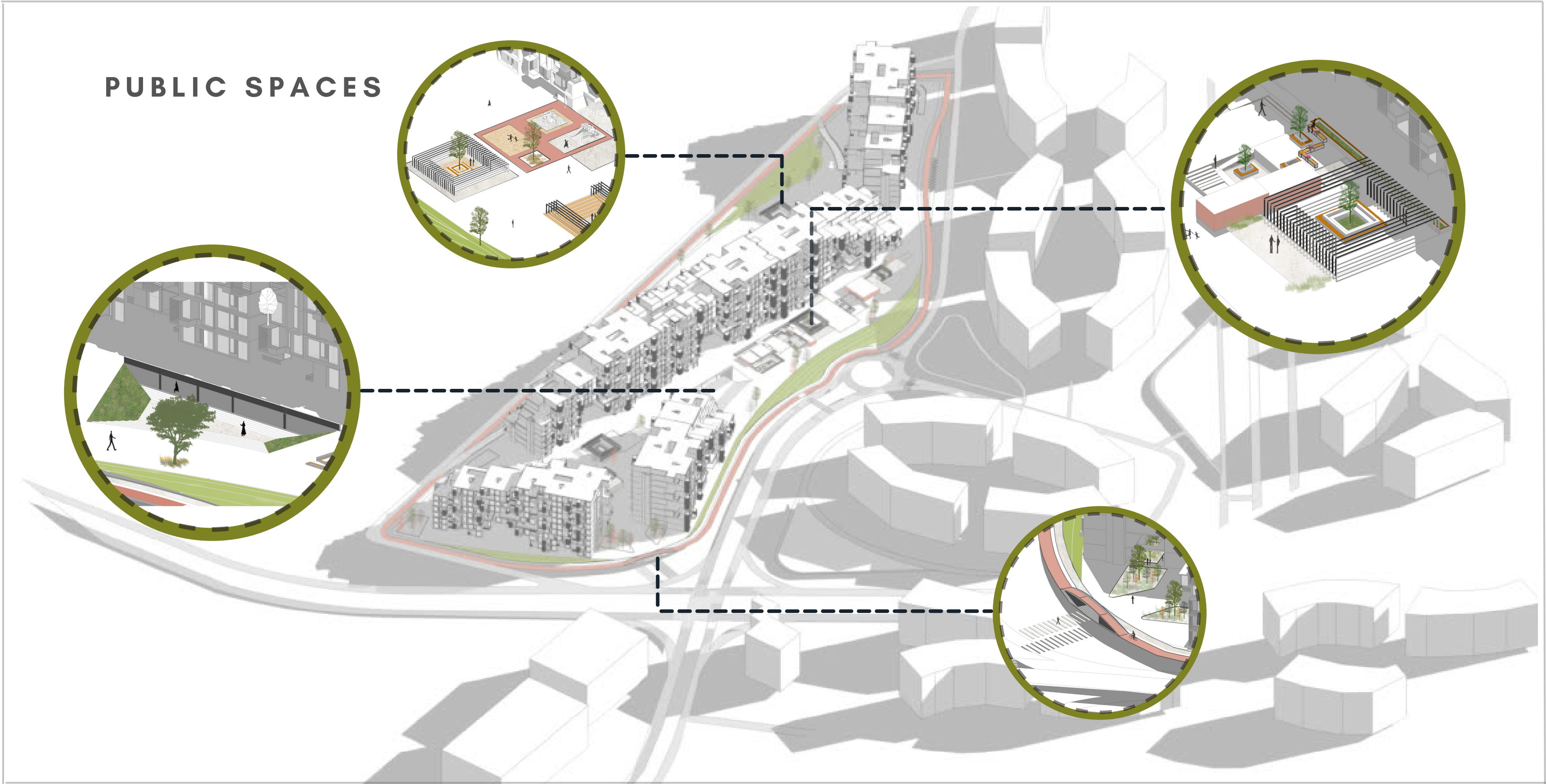
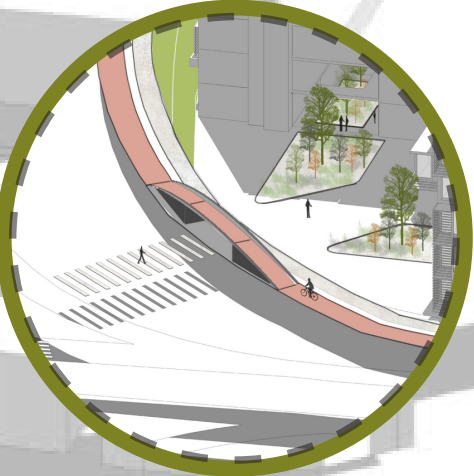
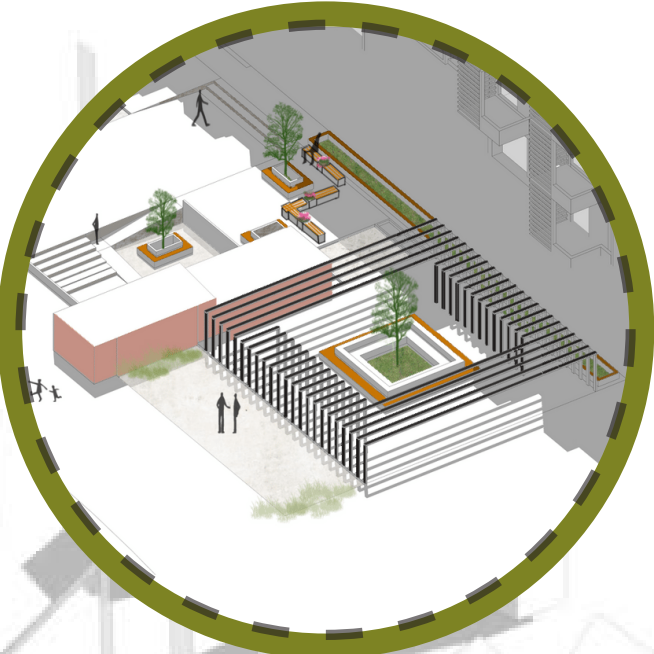
cycling track

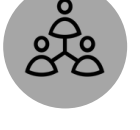


use of a subtle palate of native plant pallet

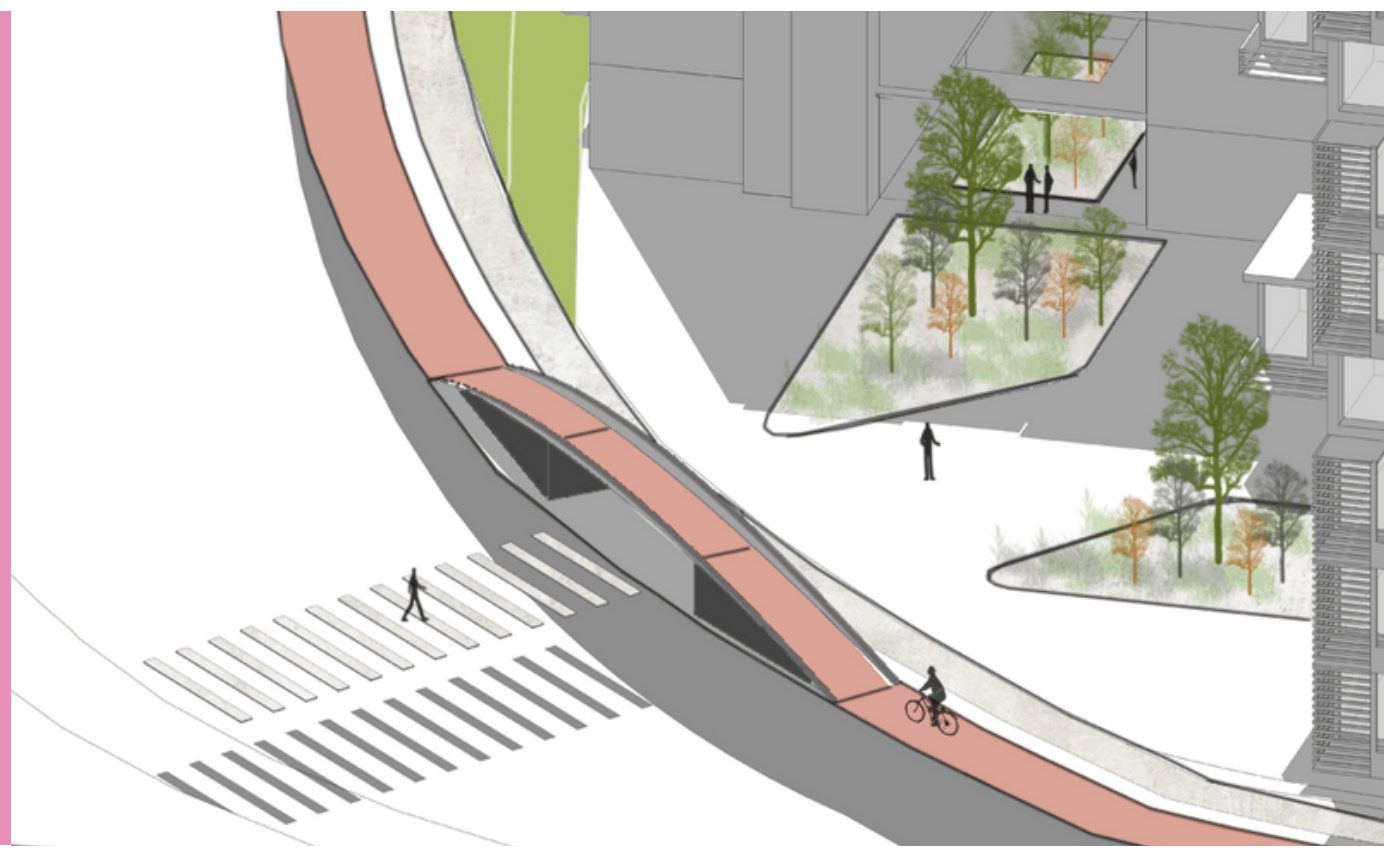


**PUBLIC SPACES**

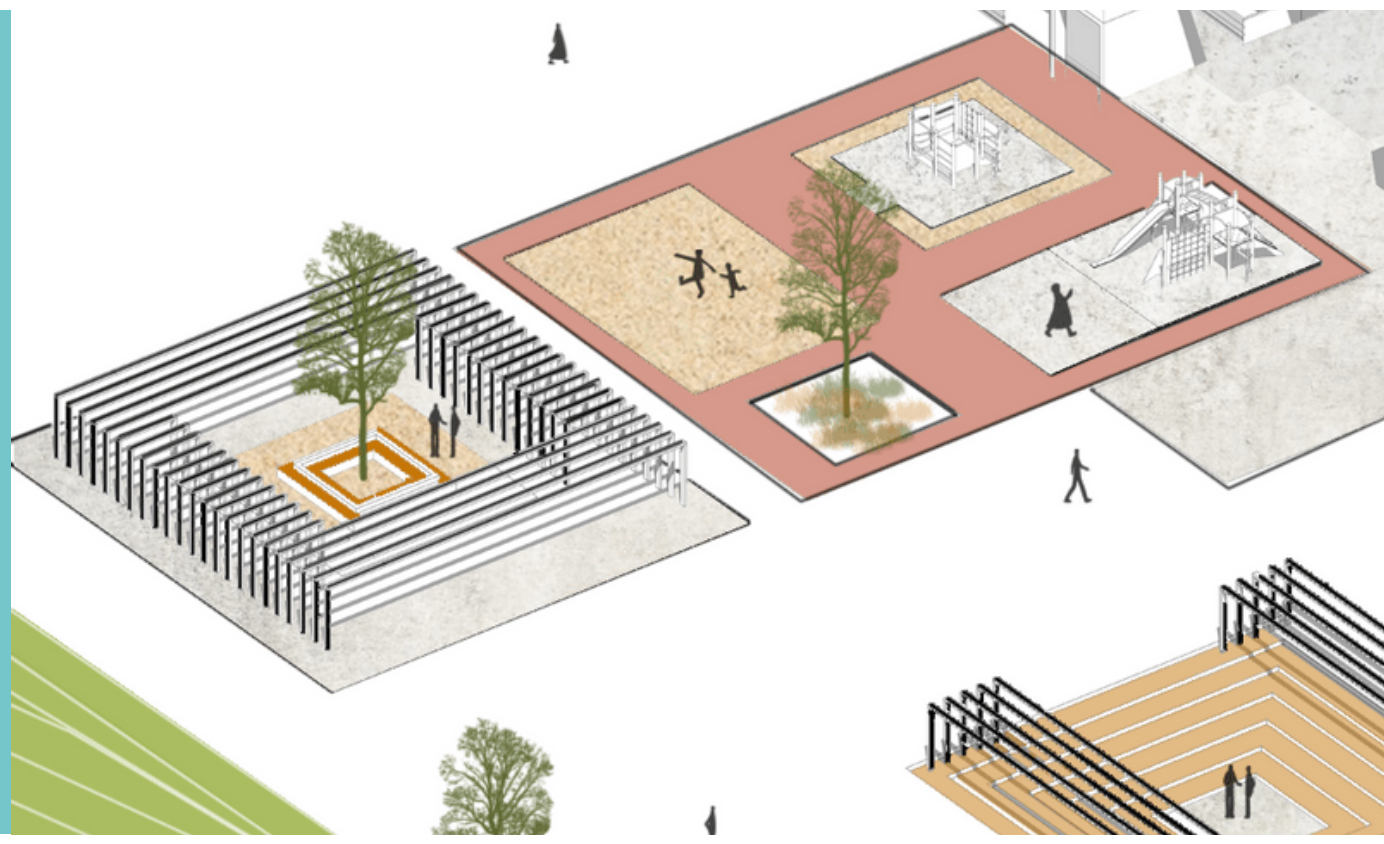




**CYCLING TRACK**



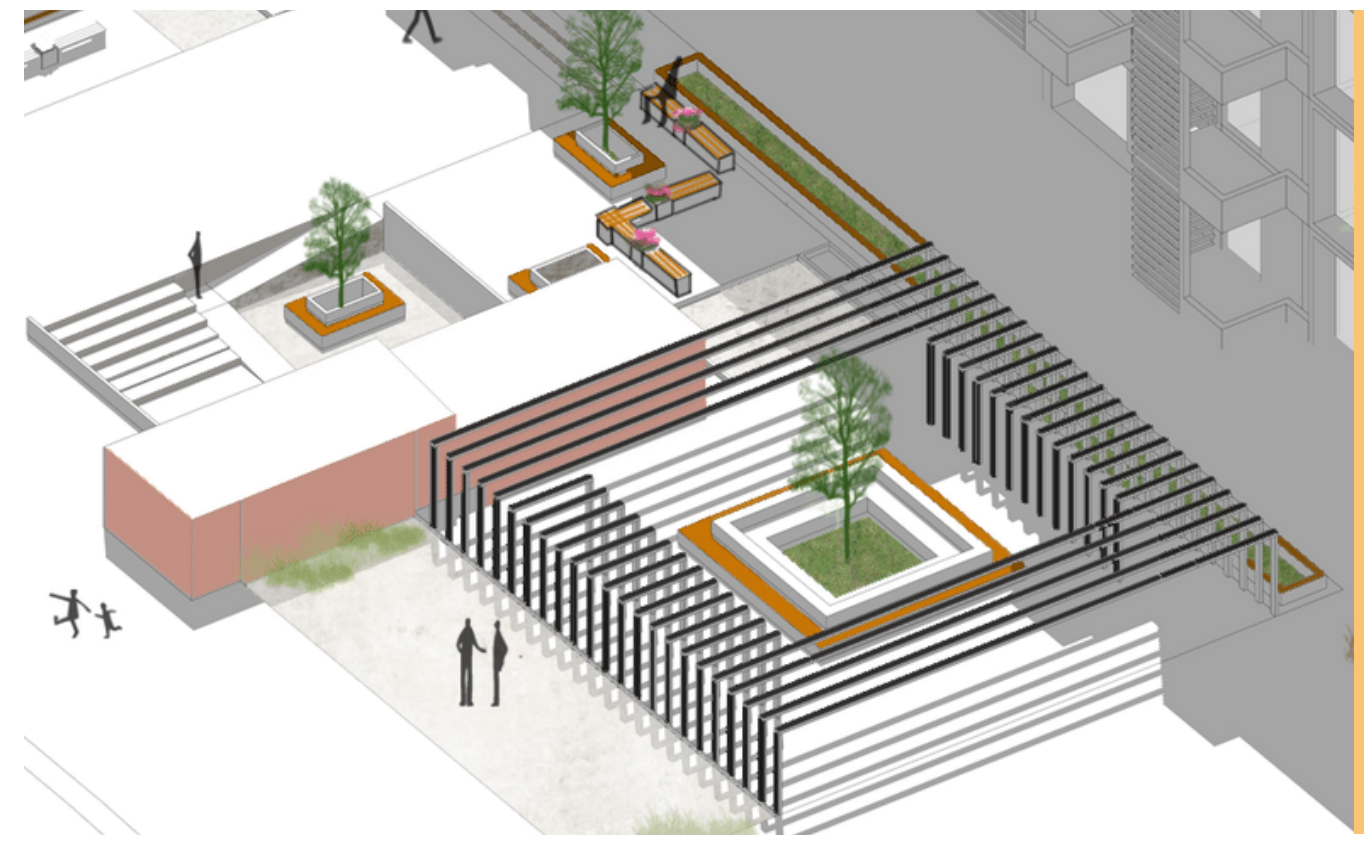
**PLAY AREA**



**AMPHITHEATER**



**MARKET SQUARE**



# GROUND FLOOR PLAN



| LEGEND |                          |
|--------|--------------------------|
| SYMBOL | DESCRIPTION              |
|        | FIRE EXTINGUISHER        |
|        | FIRE EMERGENCY TELEPHONE |
|        | FIRE ALARM CALL POINT    |
|        | FIRE FIGHTING EQUIPMENT  |
|        | FIRE LADDER              |
|        | FIRE HOSE REEL           |
|        | EMERGENCY EXIT ARROW     |
|        | EMERGENCY EXIT RIGHT     |
|        | EMERGENCY EXIT LEFT      |
|        | ASSEMBLY POINT           |
|        | FIRST AID                |
|        | SMOKE DETECTOR           |
|        | HEAT DETECTOR            |
|        | SPRINKLER                |



# TYPICAL FLOOR PLAN

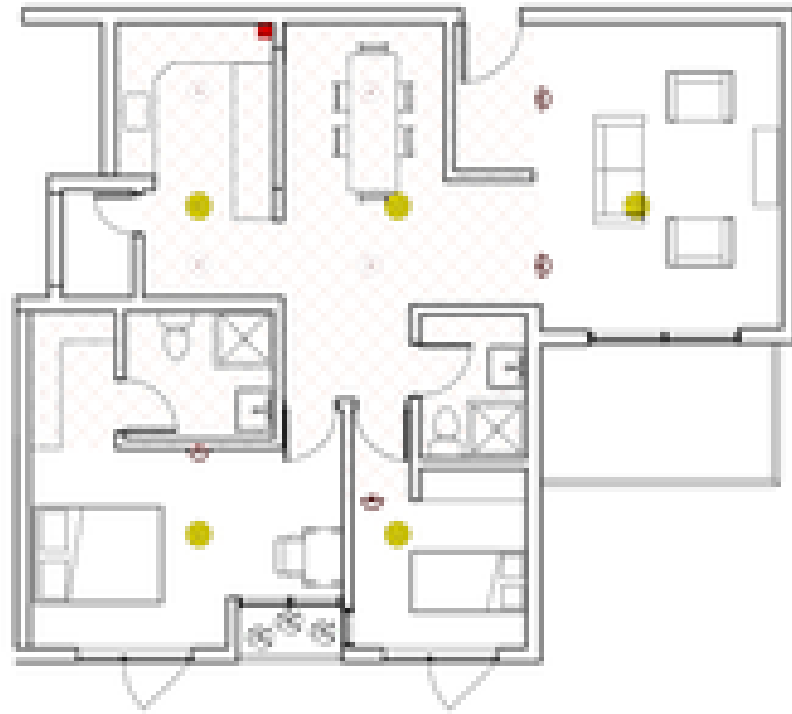


## LEGEND

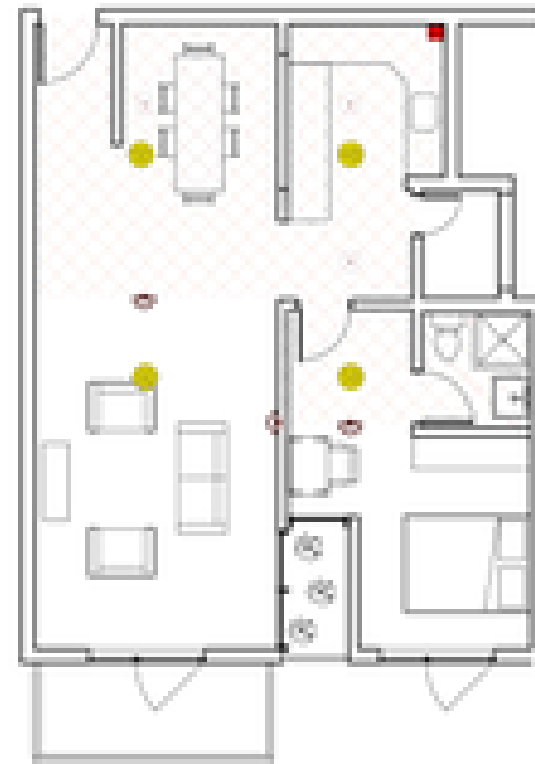
| SYMBOL | DESCRIPTION              |
|--------|--------------------------|
|        | FIRE EXTINGUISHER        |
|        | FIRE EMERGENCY TELEPHONE |
|        | FIRE ALARM CALL POINT    |
|        | FIRE FIGHTING EQUIPMENT  |
|        | FIRE LADDER              |
|        | FIRE HOSE REEL           |
|        | EMERGENCY EXIT ARROW     |
|        | EMERGENCY EXIT RIGHT     |
|        | EMERGENCY EXIT LEFT      |
|        | ASSEMBLY POINT           |
|        | FIRST AID                |
|        | SMOKE DETECTOR           |
|        | HEAT DETECTOR            |
|        | SPRINKLER                |



## SPRINKLER AND DETECTOR LAYOUT



2 BHK



1 BHK



STUDIO

| LEGEND |                          |
|--------|--------------------------|
| SYMBOL | DESCRIPTION              |
|        | FIRE EXTINGUISHER        |
|        | FIRE EMERGENCY TELEPHONE |
|        | FIRE ALARM CALL POINT    |
|        | FIRE FIGHTING EQUIPMENT  |
|        | FIRE LADDER              |
|        | FIRE HOSE REEL           |
|        | EMERGENCY EXIT ARROW     |
|        | EMERGENCY EXIT RIGHT     |
|        | EMERGENCY EXIT LEFT      |
|        | ASSEMBLY POINT           |
|        | FIRST AID                |
|        | SMOKE DETECTOR           |
|        | HEAT DETECTOR            |
|        | SPRINKLER                |

### DESIGN CONSIDERATIONS

- 1 FIRE ESCAPE STAIRCASE CAN BE PROVIDED IF FOLLOWING CONDITIONS ARE MET-
1. TOTAL FLOOR AREA LESS THAN 500m<sup>2</sup>.
  2. TRAVEL DISTANCE FROM MAIN DOOR TO STAIRCASE < 11m.
  3. TRAVEL DISTANCE FROM WITHIN APARTMENT TO STAIRCASE < 23m.

ON THE BASIS OF CALCULATIONS AND CODES CONSIDERATION 5 NUMBER OF STAIRCASES WERE PROVIDED IN BUILDING 1.

1. MAXIMUM TRAVEL DISTANCE FROM MAIN DOOR TO STAIRCASE < 61m.
2. MAXIMUM TRAVEL DISTANCE FROM APARTMENT EDGE TO MAIN DOOR < 38m.
3. MAXIMUM TRAVEL DISTANCE FROM ANY NON DWELLING UNIT TO STAIRCASE < 76m.

OTHER CONSIDERATIONS INCLUDE-

1. MINIMUM CLEAR HEIGHT OF 2285mm.
2. THE STAIR SHALL HAVE A MINIMUM WIDTH OF 1200mm.
3. THE DOOR SHALL BE ATLEAST 915mm.
4. THE RISER SHOULD NOT EXCEED 180mm.
5. THE THREAD SHOULD BE ATLEAST 280mm.
6. MAXIMUM HEIGHT BETWEEN LANDINGS SHALL NOT BE MORE THAN 3660 mm.

