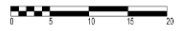
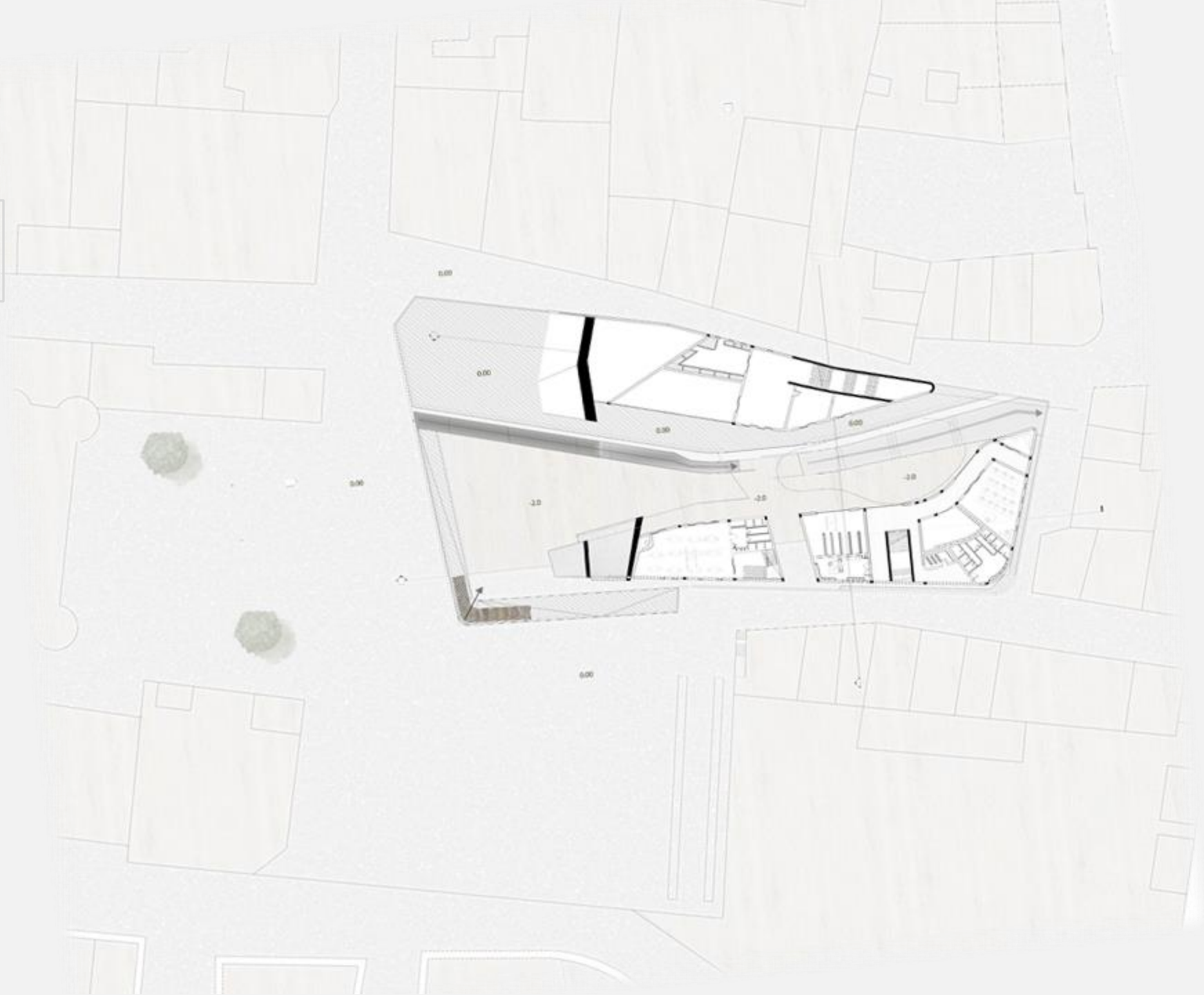




- 1 RESTORANT AND CAFÉ
- 2 ART GALLERY
- 3 OFFICE
- 4 WORKSHOP
- 5 SHOP
- 6 WCS
- 7 SECURITY
- 8 BOOKSHOP
- 9 SOUVNER SHOP
- 10 Information and registration



SCALE 1:100

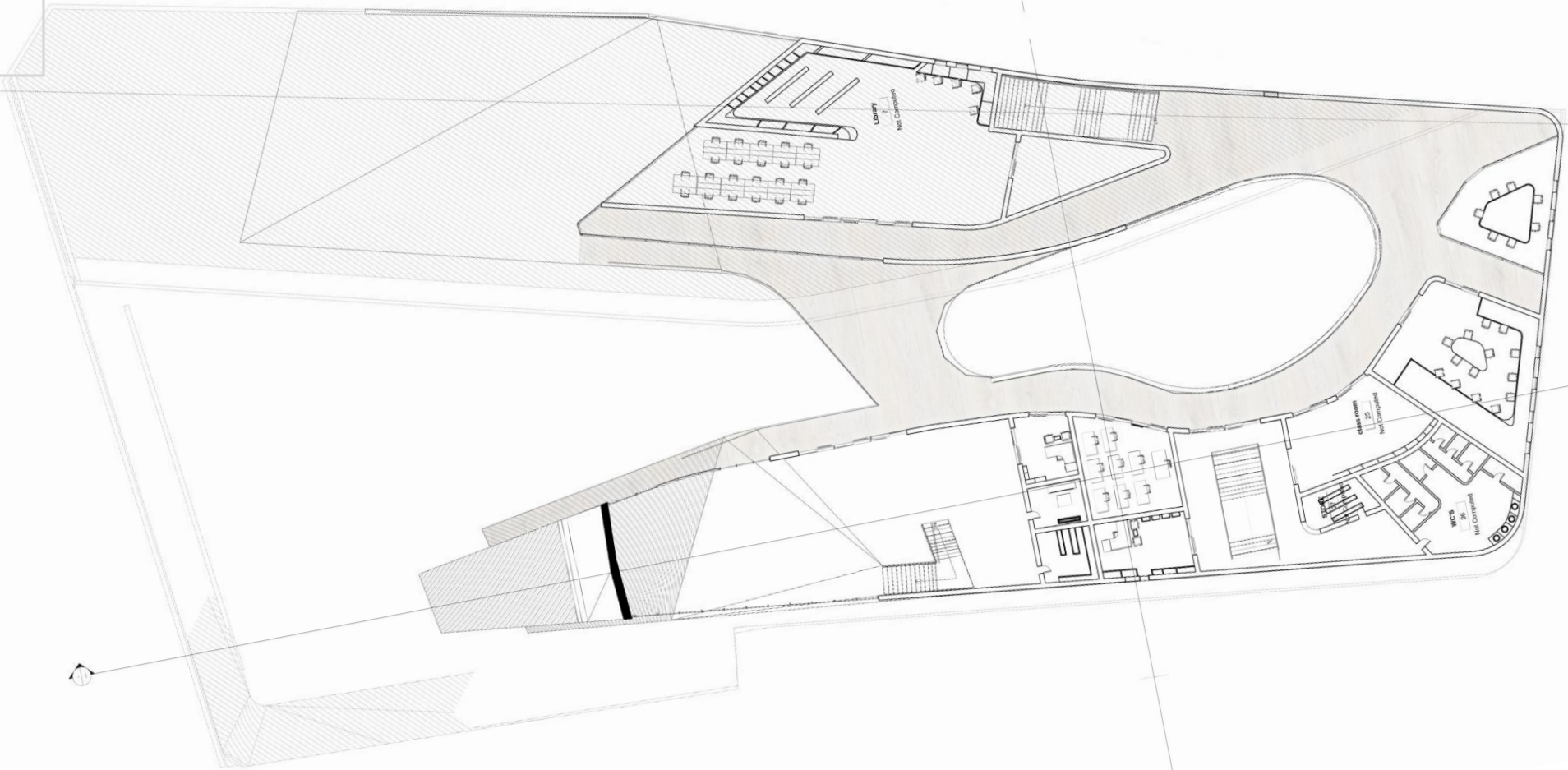


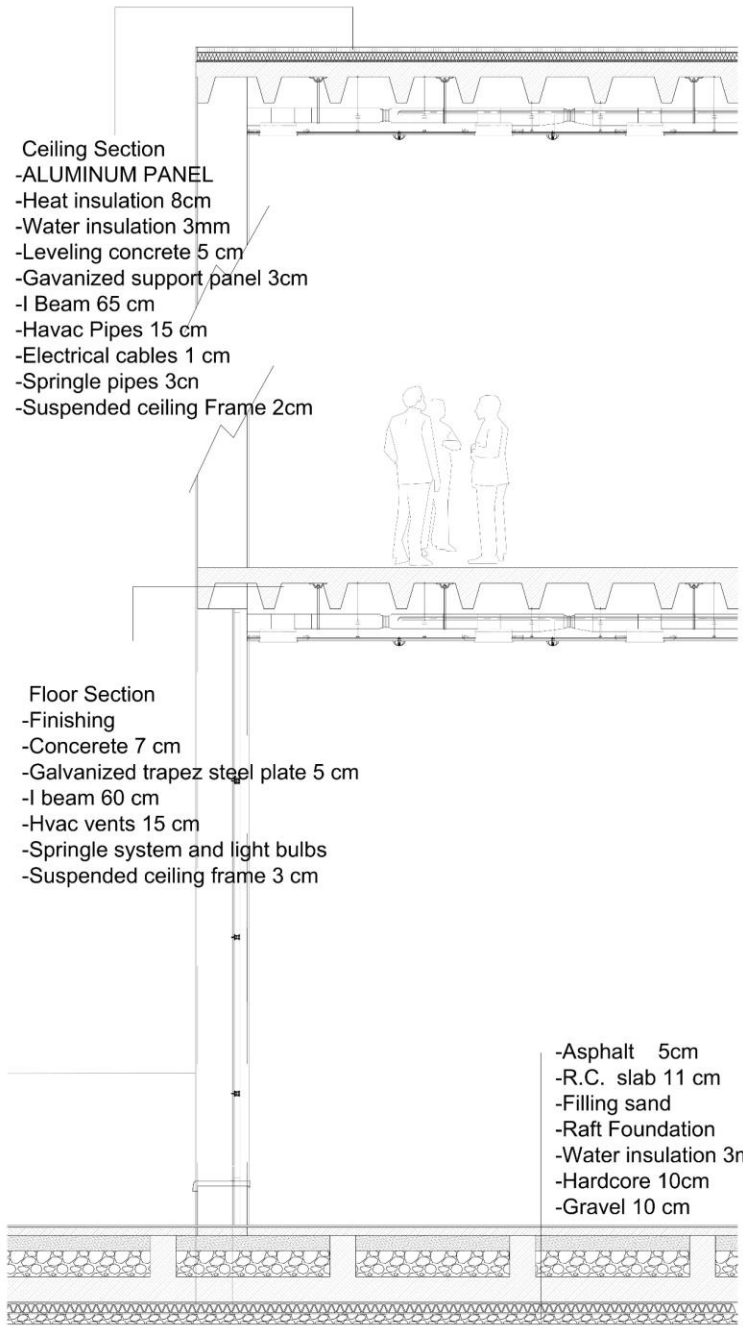


- | | |
|-------------------|-------------------|
| 1, library | 9 Manger office |
| 2 share desk | 10 Co worker room |
| 3 group work room | 11 Archive |
| 4 Wcs | 12 Storge |
| 5 class room | |
| 6 seminar room | |
| 8 office | |



SCALE BAR 1:100





- Ceiling Section**
- ALUMINUM PANEL
 - Heat insulation 8cm
 - Water insulation 3mm
 - Leveling concrete 5 cm
 - Gavanized support panel 3cm
 - I Beam 65 cm
 - Havac Pipes 15 cm
 - Electrical cables 1 cm
 - Springle pipes 3cn
 - Suspended ceiling Frame 2cm

- Floor Section**
- Finishing
 - Concerete 7 cm
 - Galvanized trapez steel plate 5 cm
 - I beam 60 cm
 - Hvac vents 15 cm
 - Springle system and light bulbs
 - Suspended ceiling frame 3 cm

- Asphalt 5cm
- R.C. slab 11 cm
- Filling sand
- Raft Foundation
- Water insulation 3mn
- Hardcore 10cm
- Gravel 10 cm