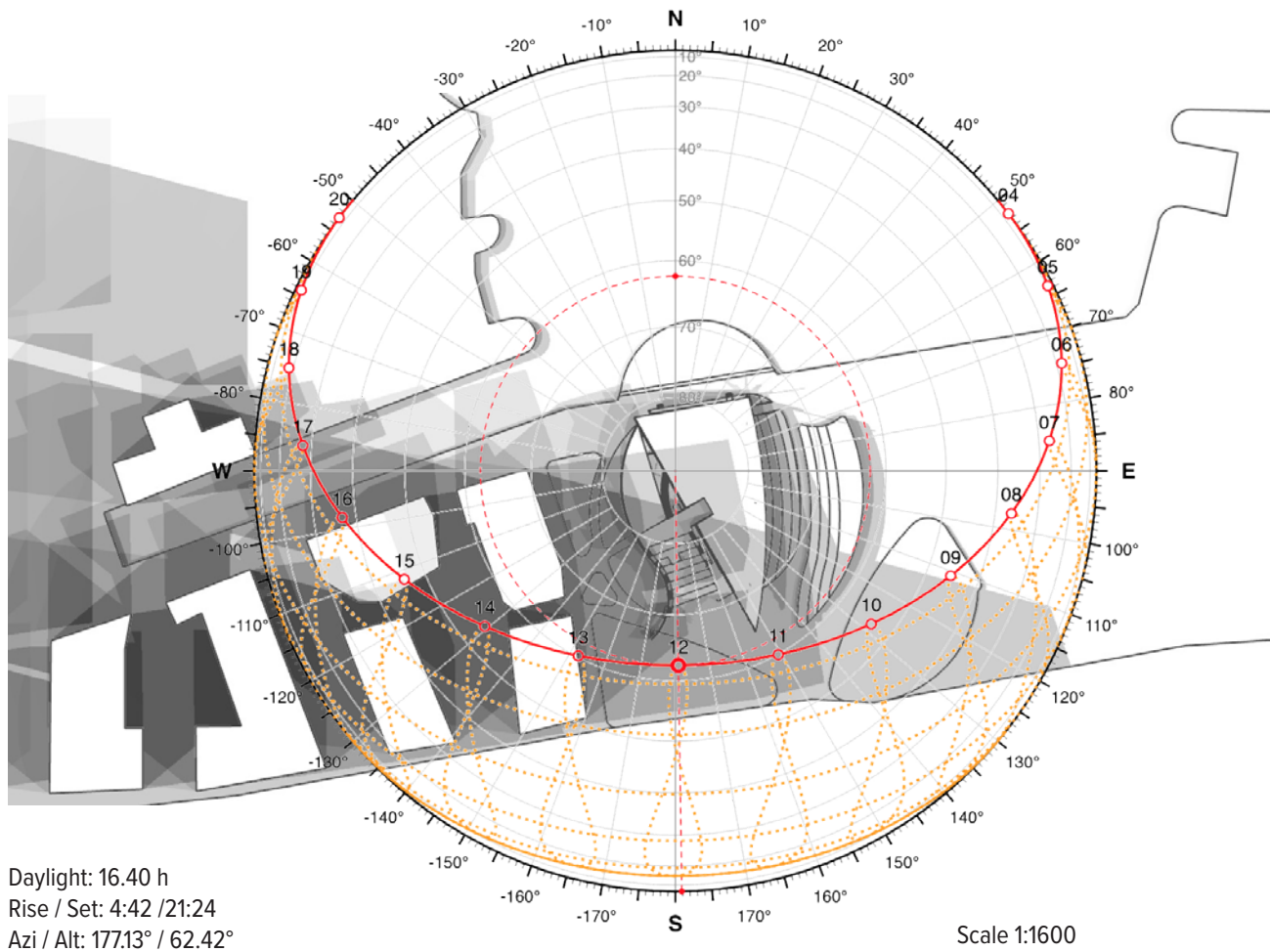


ENVIRONMENTAL DEVELOPMENT AND STRATEGY

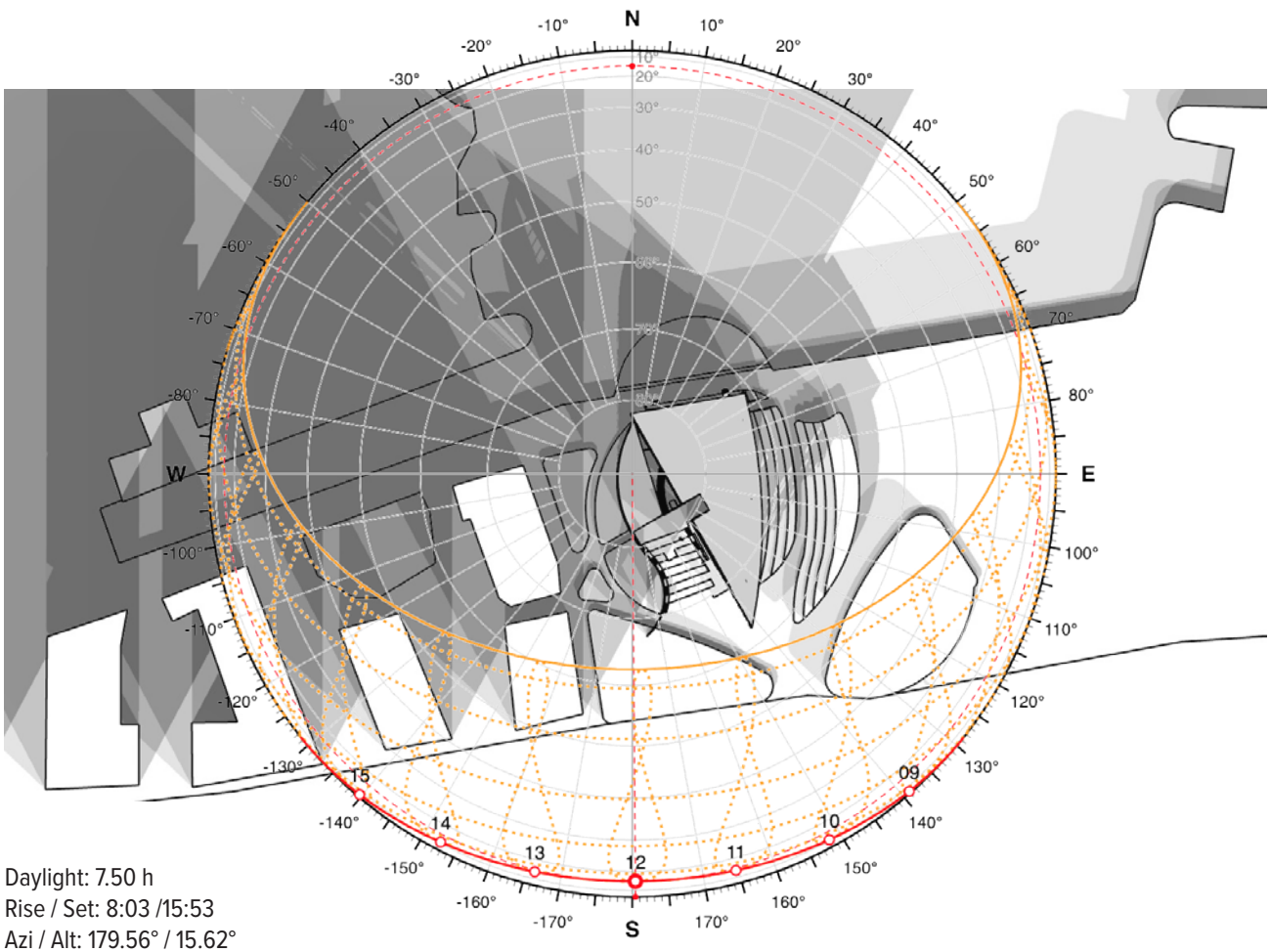
Sun study and shading system

SUN AND SHADOW STUDY JUNE 21st



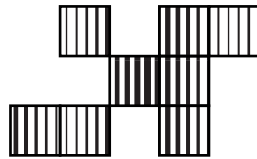
During the summer solstice the building receives an excellent amount of direct sunlight and is covered in shadow for 3 hours. From 4:00 pm until sunset the building is able once again to bring inside some direct sunlight thanks to its NW facade.

SUN AND SHADOW STUDY DECEMBER 21st



During the winter solstice the building is able to receive direct sunlight for the first part of the day with 5 hours of direct sunlight out of 8 totals. After noon the shadows on the site become very dramatic and cover the entire building area.

SUNSCREEN PANELS AND REDUCING GLASS



The facade panels serve a double function:

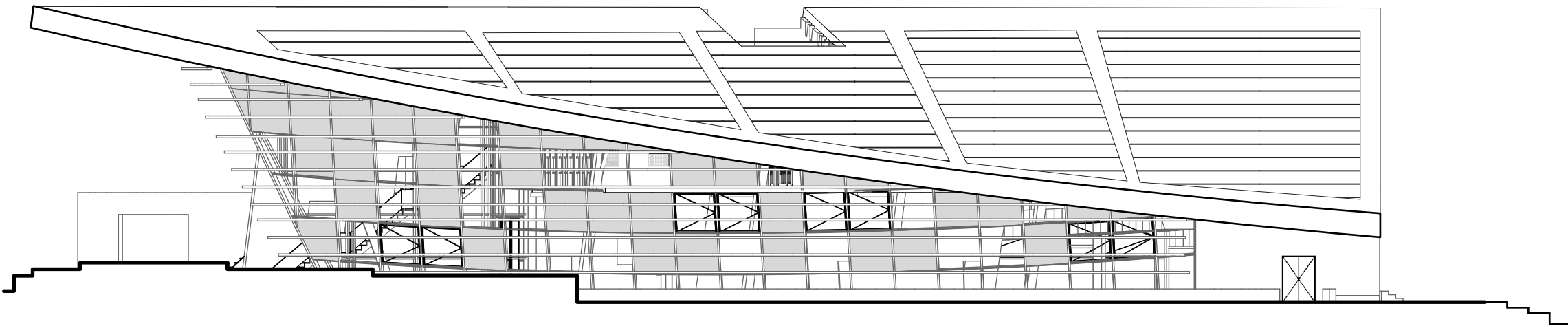
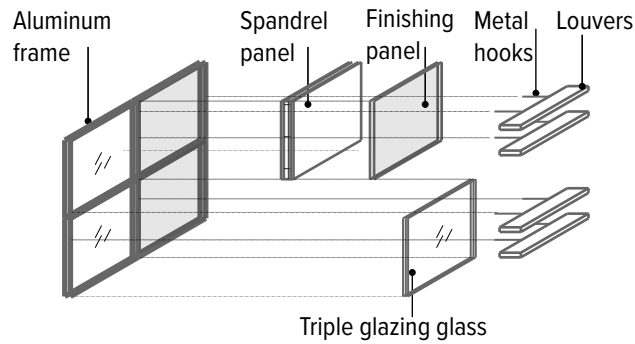
- reducing the amount of glass on the facade
- acting as the real vertical system to block the direct sunlight

HORIZONTALITY AND GENERATING POROSITY

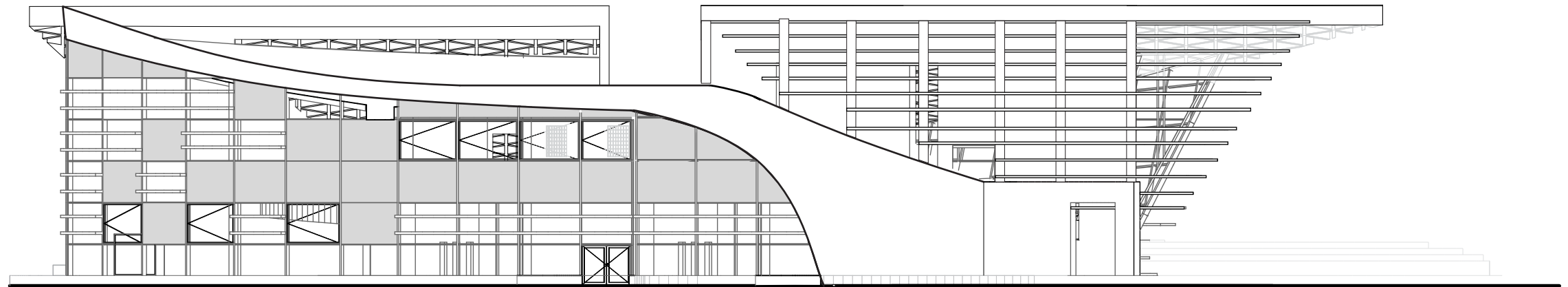


The East-West horizontal louvers add value with their horizontal profile suggesting the degradation of the ships thus exposing their skeleton, while creating a more porous facade.

FACADE SYSTEM



East Elevation
Scale 1:250



West Elevation
Scale 1:250