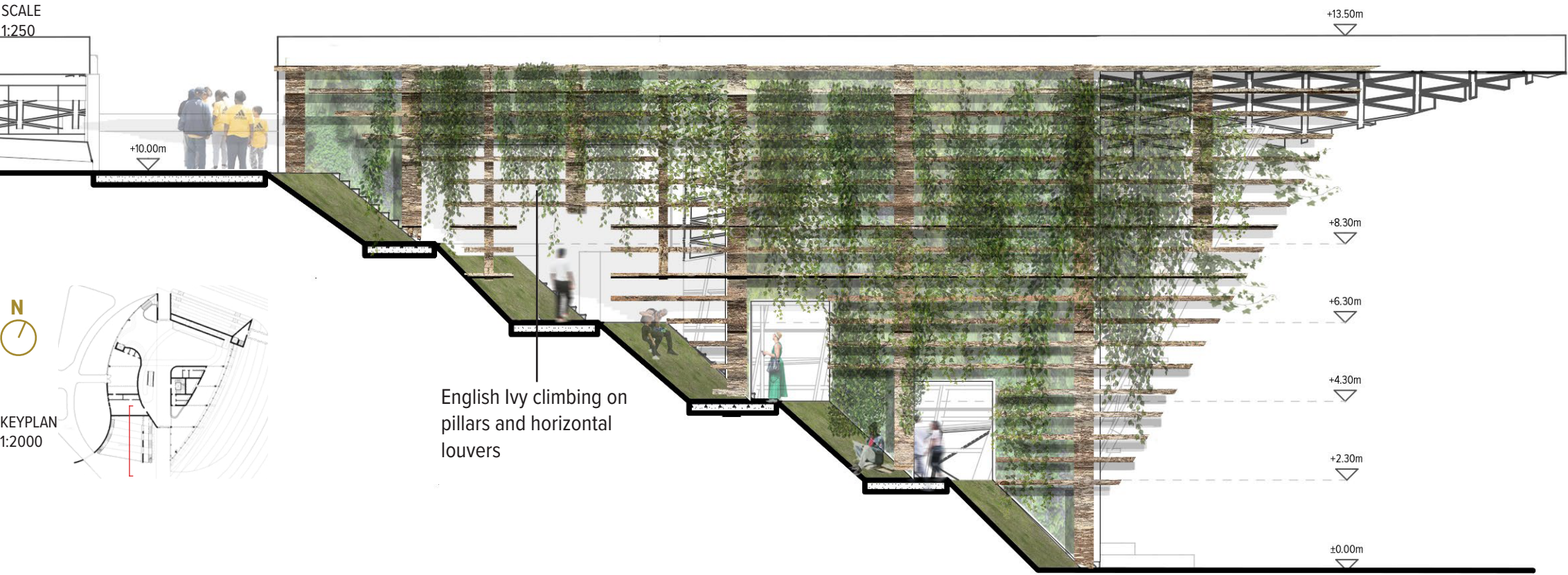


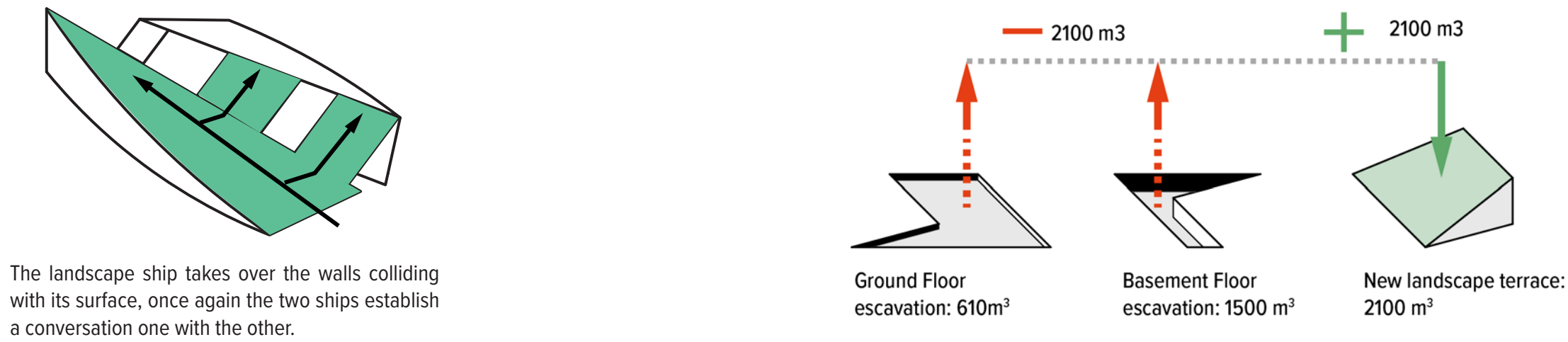
# ENVIRONMENTAL DEVELOPMENT AND STRATEGY

## Landscape

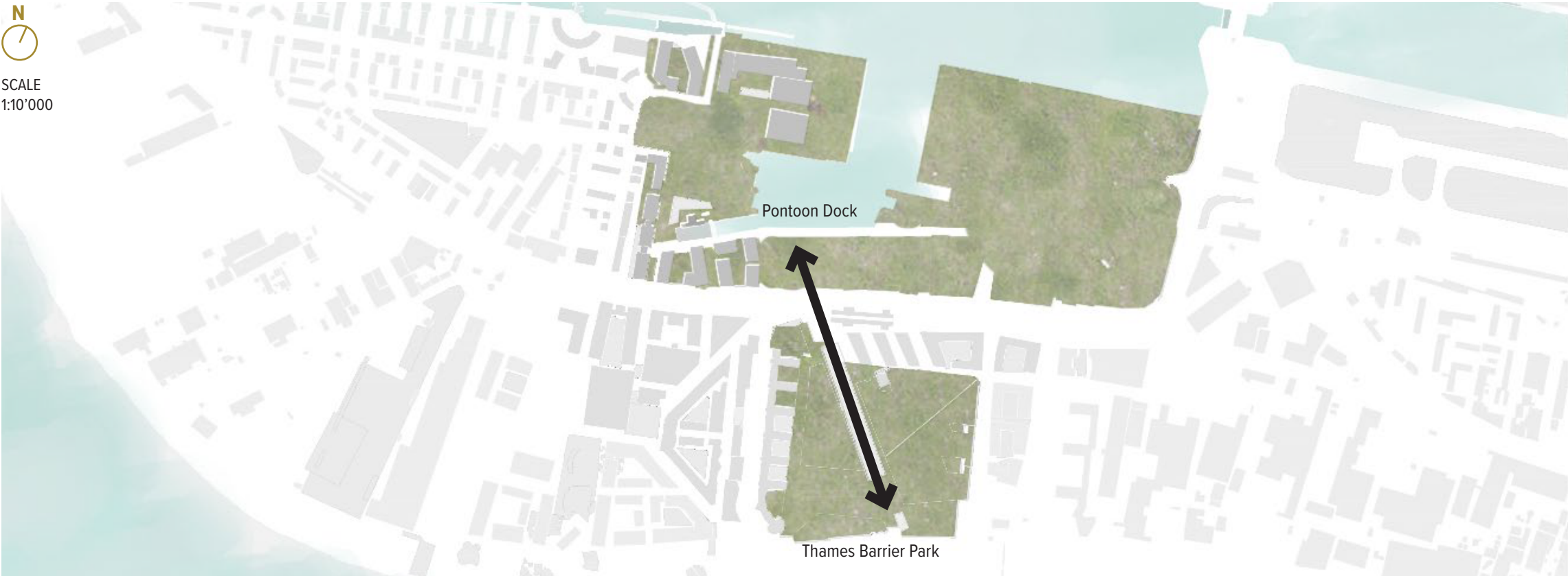
### GREEN TERRACE ROOF



### GREENERY TAKING OVER

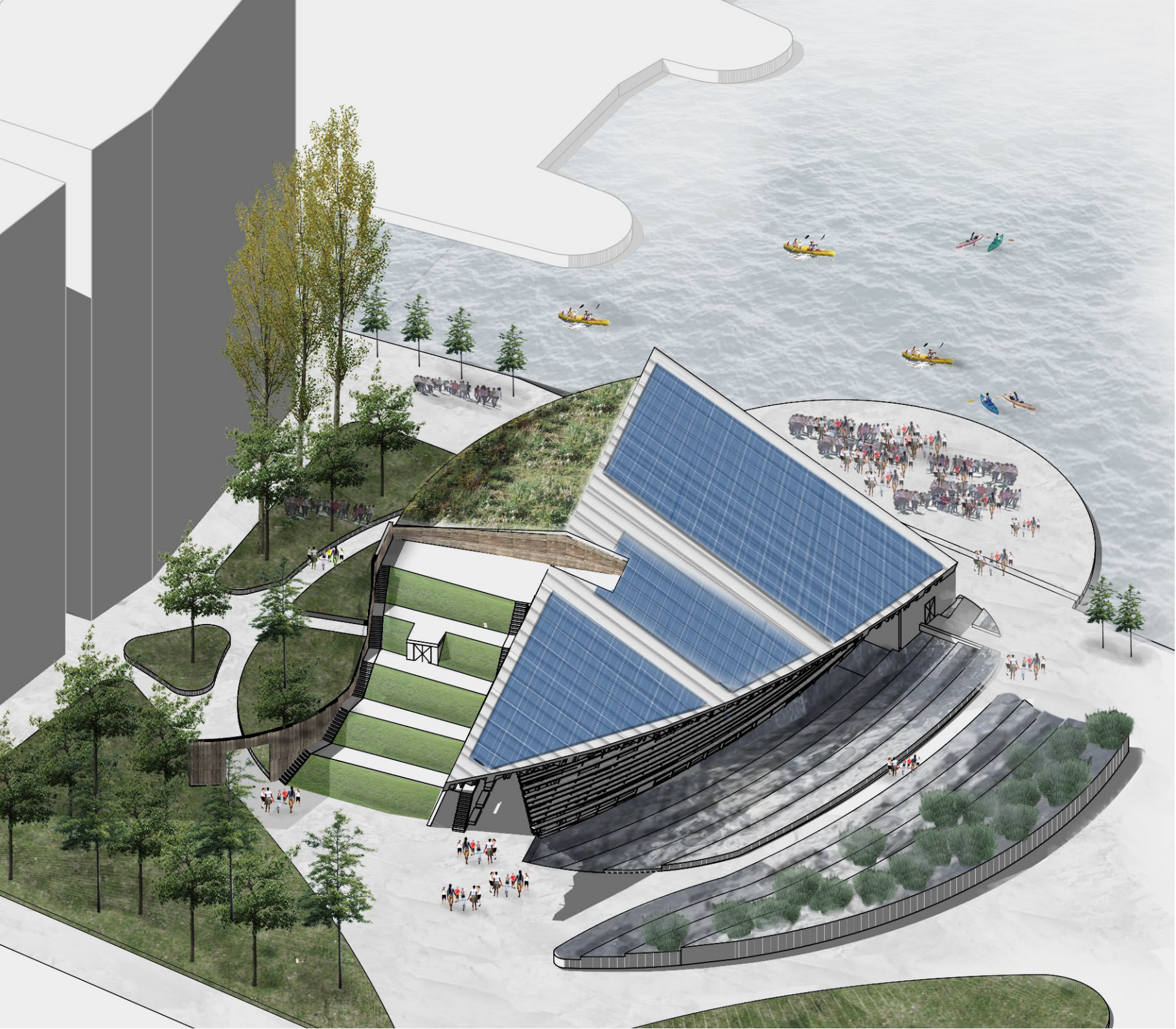


### CONNECTING GREEN AREAS

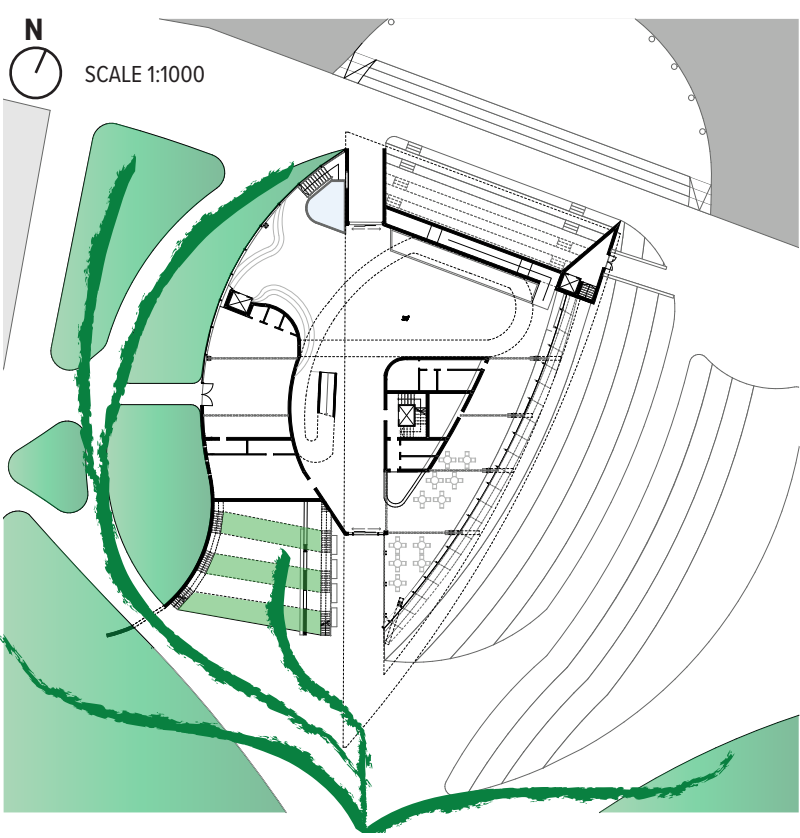


The new proposal seeks to create a conversation with Thames Barrier Park and extend its green space inside the docks. The result is a smooth transition between the two most important areas in Silvertown. The addition of greenery in the docks will improve the overall quality of the environment and repopulate it with different species of animals and plants.

### PROPOSAL LANDSCAPE OVERVIEW

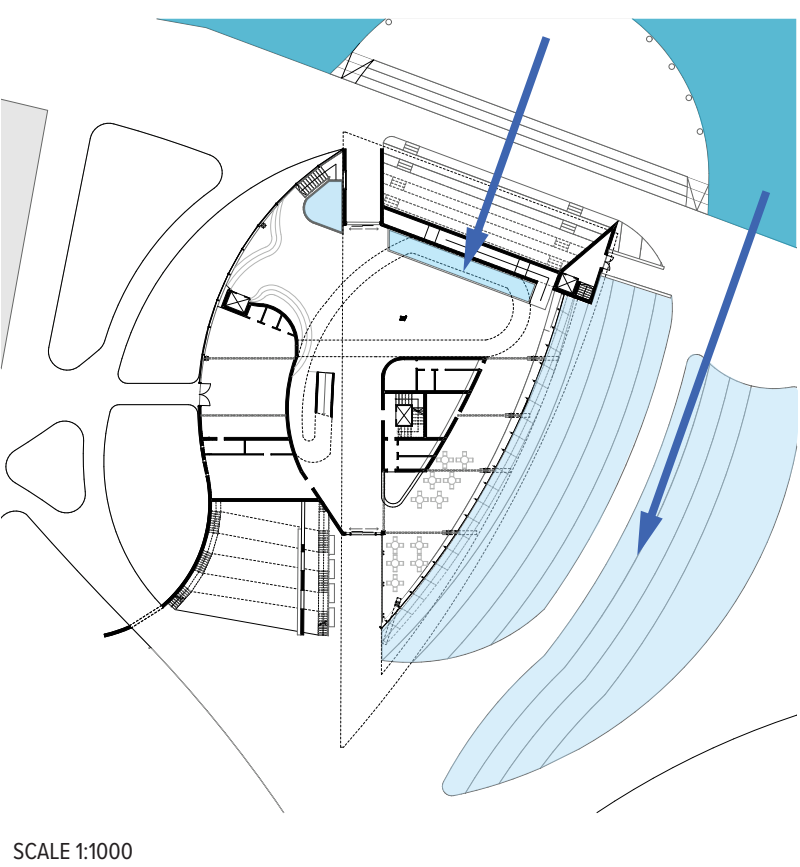


### A NEW LANDSCAPE



By extending the green axis from Thames Barrier park the vegetation and biodiversity on the site is now enriched. The axis blooms like a flower and propagate around the Green Ship.

### BRINGING WATER INSIDE



Water pools bring water inside the building and the site. This feature allows a smoother transition in approaching the waterfront. A platform on the water creates a new meeting space.