

INSPIRE 
AWARDS

DESCRIPTIVE MEMORY

The proposal for the STU is based on a simple and regular approach, sensitive to the construction context, the central empty space is recovered, providing it with greater geometric regularity. Due to the changes in level by the slopes of the land, the starting point of the proposal was the leveling and structuring of the land, in only three levels of equal heights. The incorporation of a new building, made up of a block and a glass box, with its new activities and a system of vertical circulation cores and services, improve and optimize the operation and relationships between the existing buildings and the new building.



PROJECT

CENTER OF INNOVATION IN BRATISLAVA

MEMBERS



ROGGIA REBULLIDA CRISTIAN



MOLINA DARIO

INDEX

LOCATION	07
NEED PROGRAM	09
TOPIC - PROBLEM / PROGRAM	11
PLACE - CONTEXT / SITE	17
MATCH SCHEME	21
PLANIMETRY	23
RENDERS	33



LOCATION





EUROPA



ESLOVAQUIA



BRATISLAVA

NEED PROGRAM





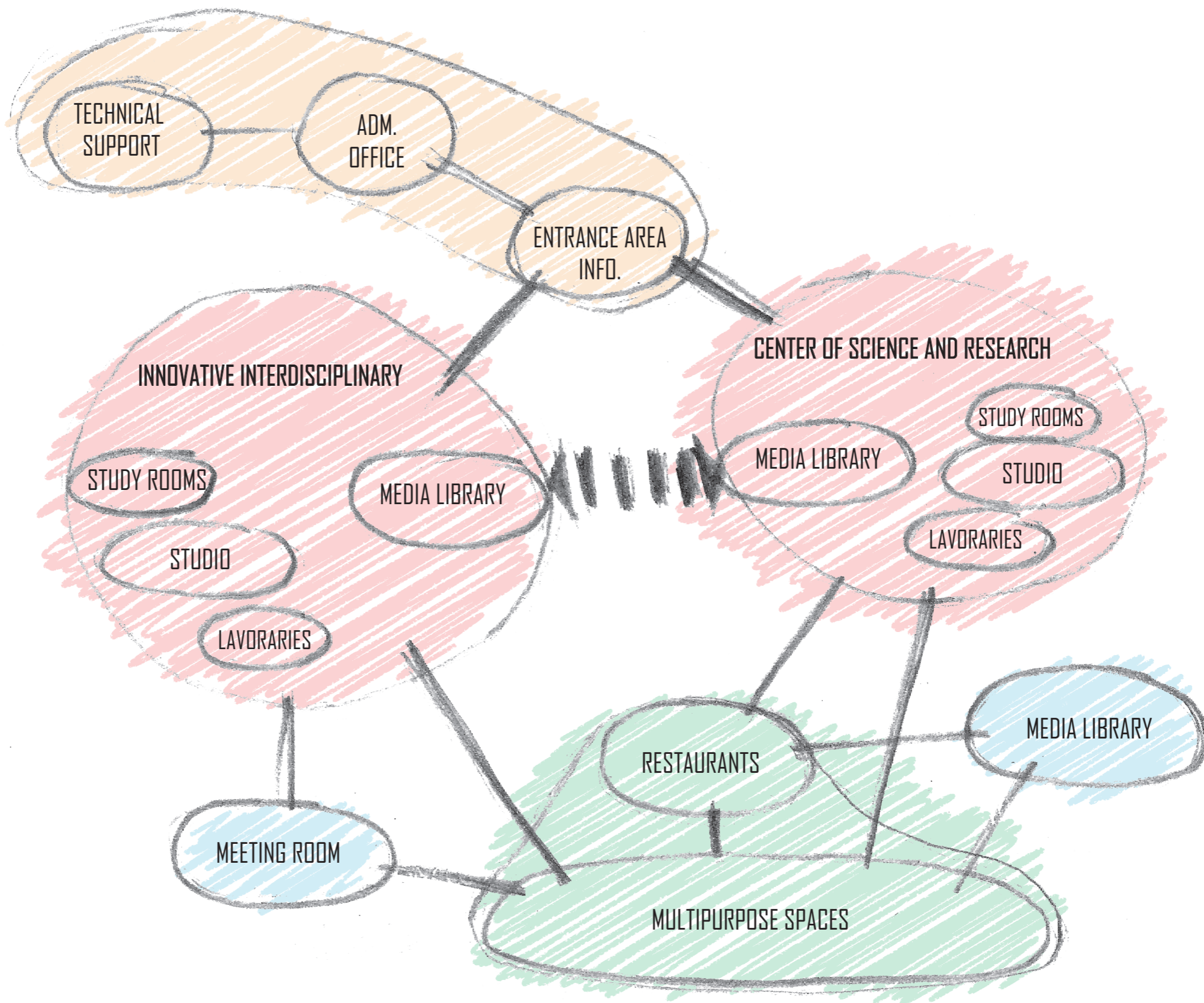
Spaces	Space area m2 (max. size)
Innovative interdisciplinary research center STU, startup center, cooperation with practice	4000
Presentation (experiential) center of science and research.	1000
Administrative offices of the Rectorate in connection to research	500
Social, exhibition and multipurpose spaces	1000
Media library, study rooms	500
Workshops	300
Info services, entrance area	500
Catering, restaurants, cafes	500
Technical background	500
Max.	From 7 500 TO 10 000
Underground garage (under the building and part of the yard) (approx. 300 places)	7 500
SUM	Max. 17 500

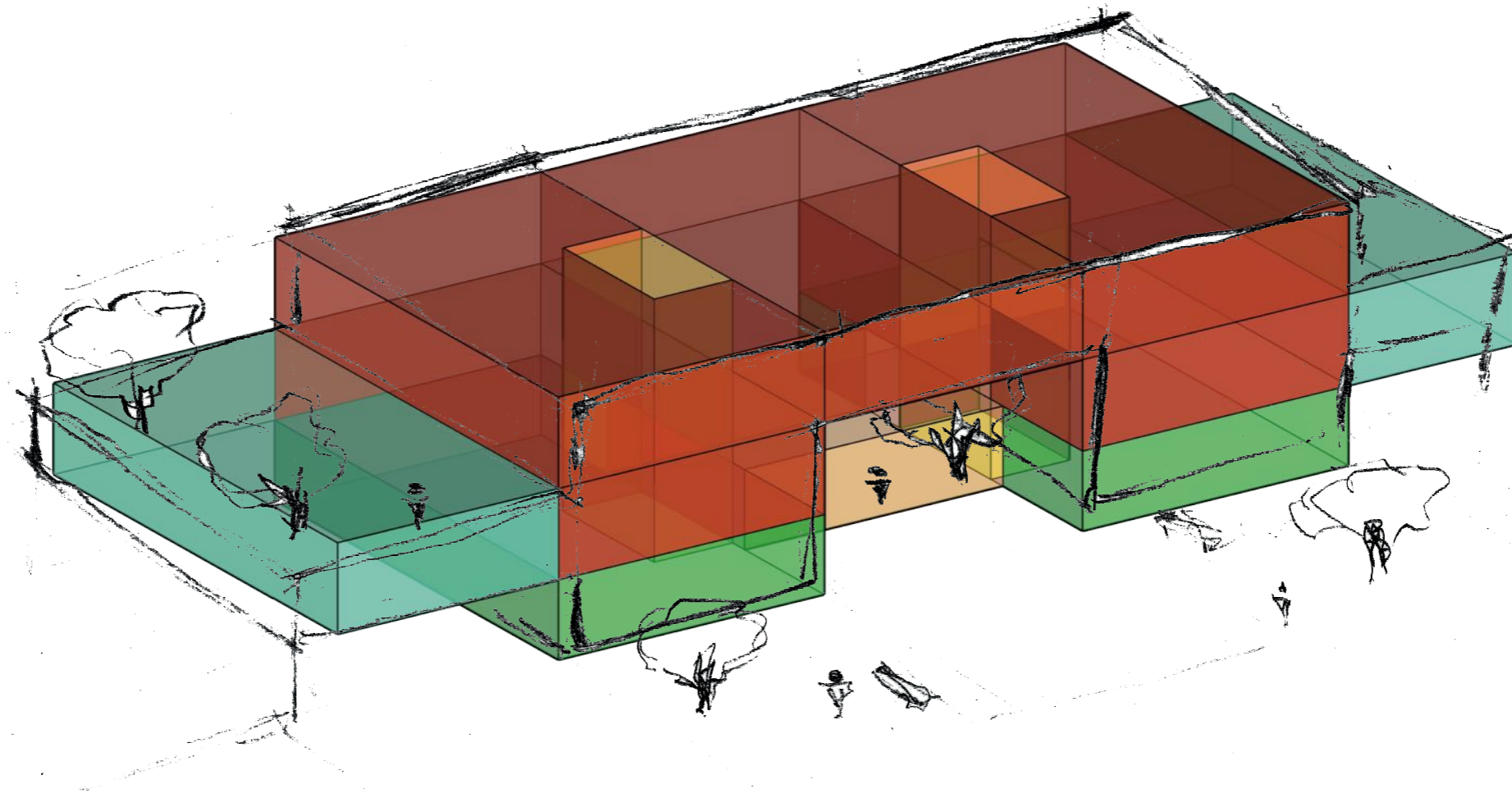
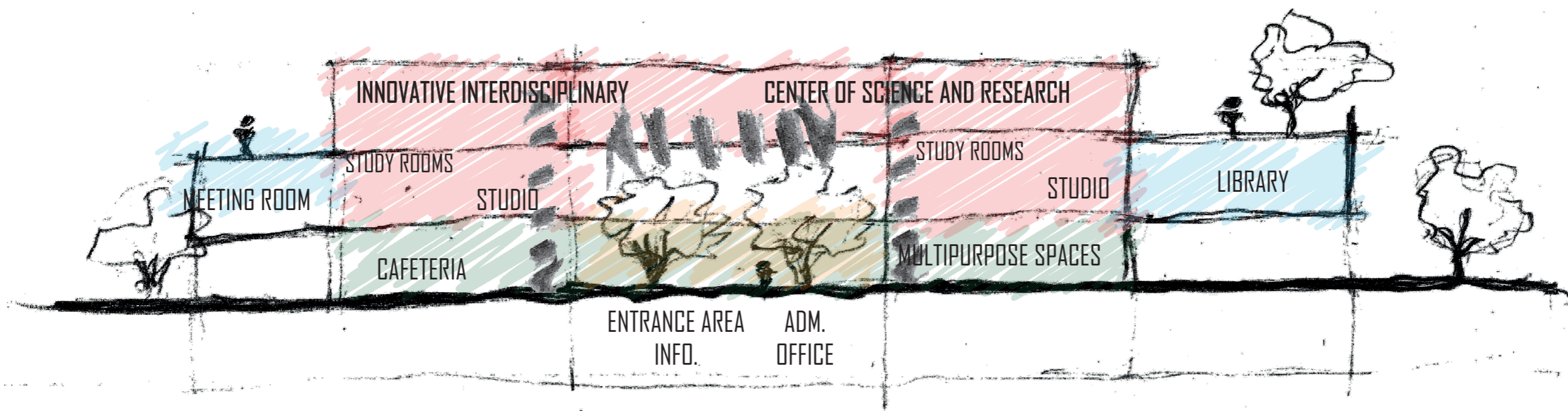
Local program for the use of free space:

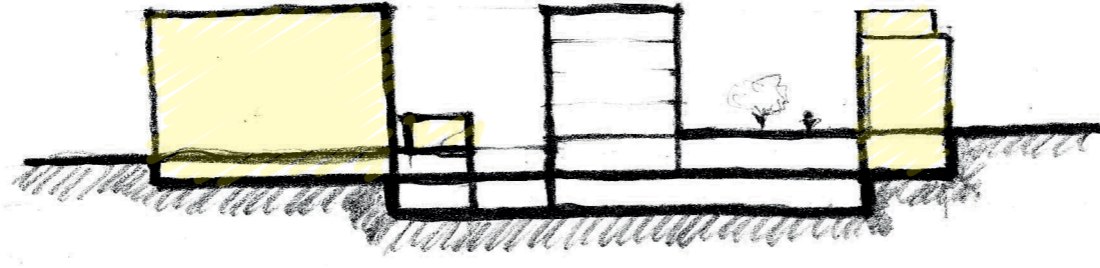
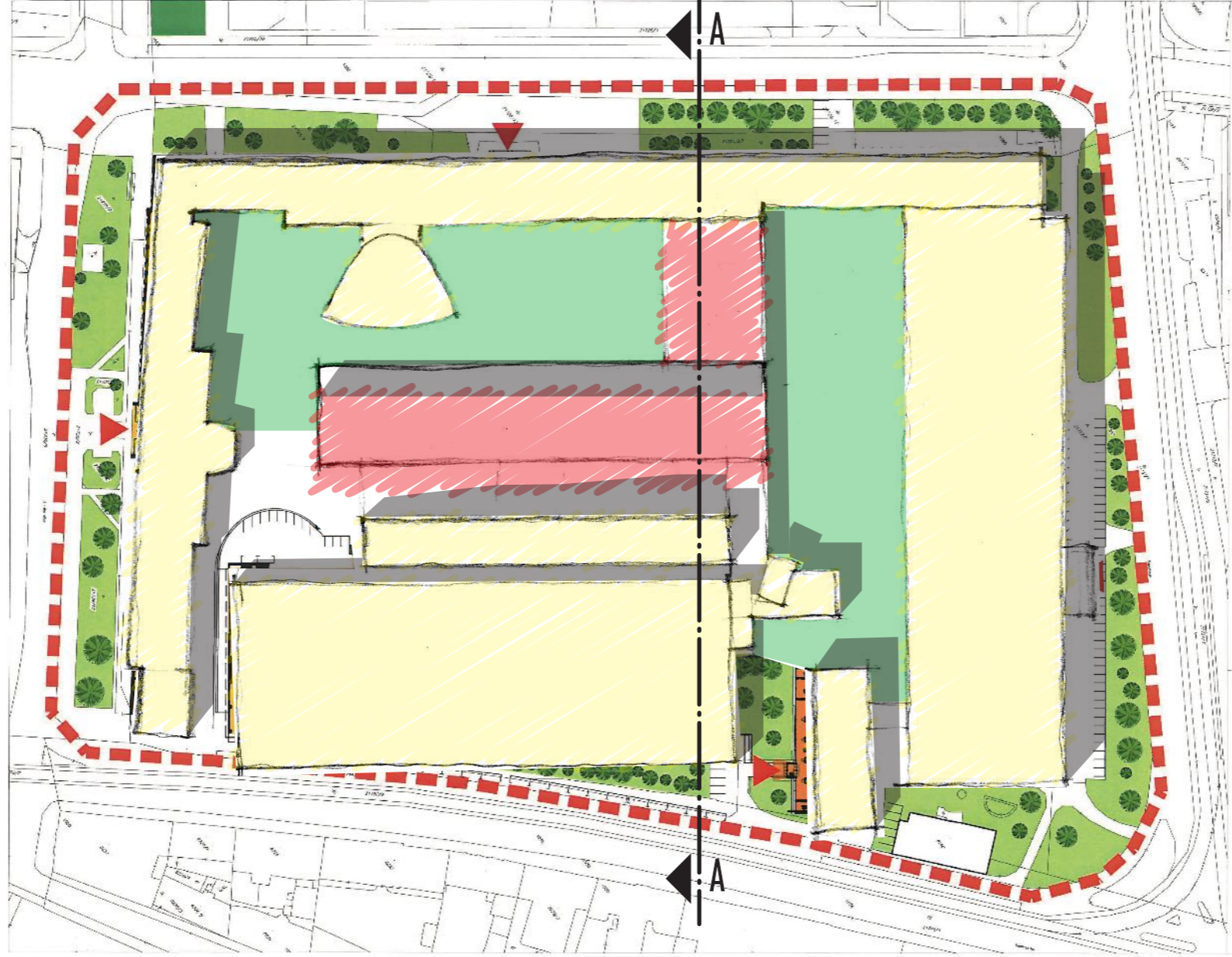
- Spaces for gatherings
- Spaces for relaxation
- Educational spaces in the exteriors
- Areas for presentations and exhibitions
- Areas for formal and informal meetings
- Outdoor seating for social events - Amphitheatre
- Sport grounds
- Pavilions
- Greenery
- Minimization of parking spaces at above-ground level

TOPIC - PROBLEM / PROGRAM

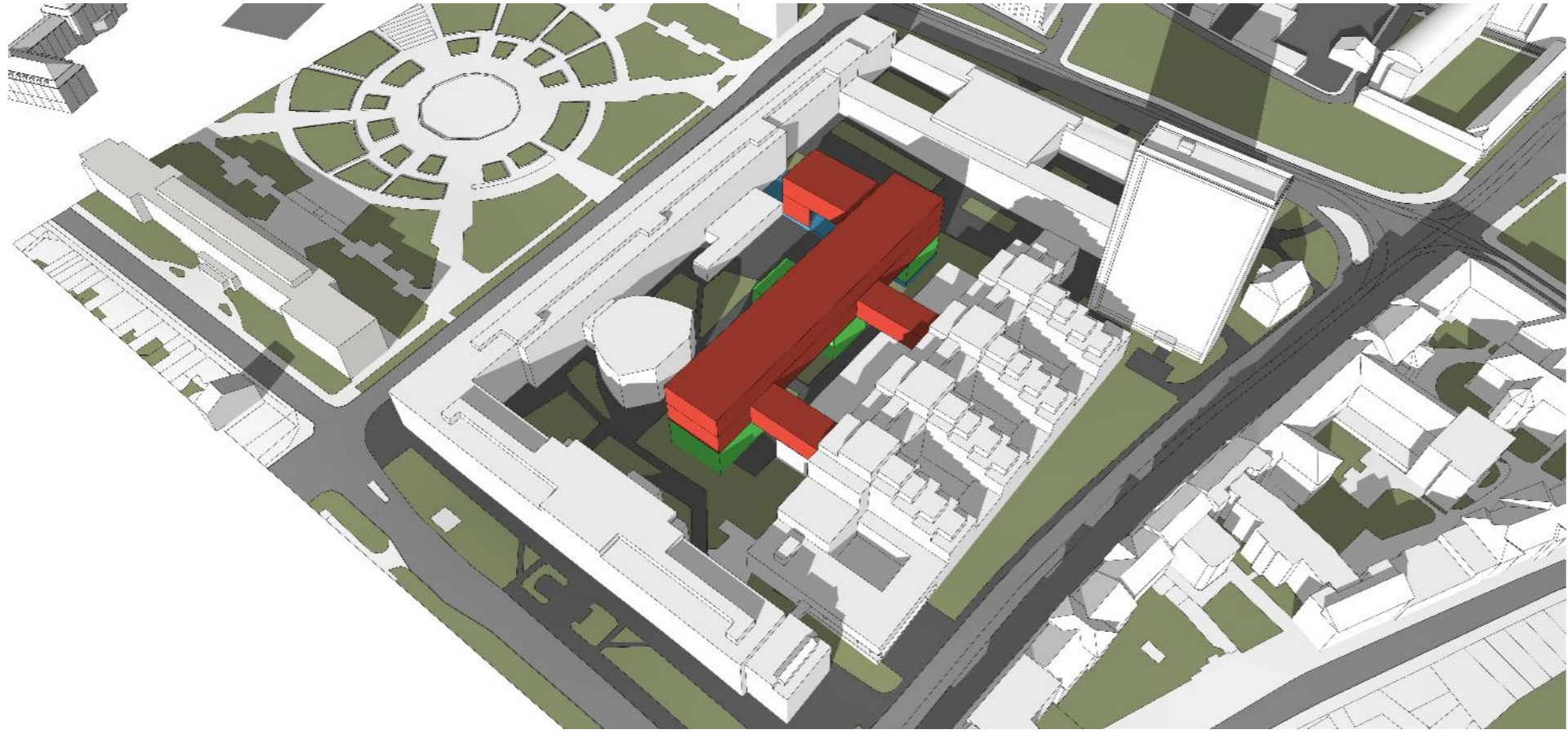








Cut A-A



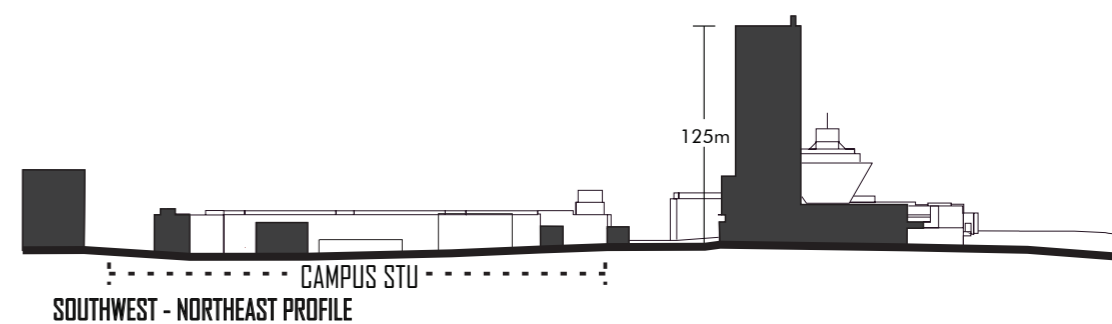
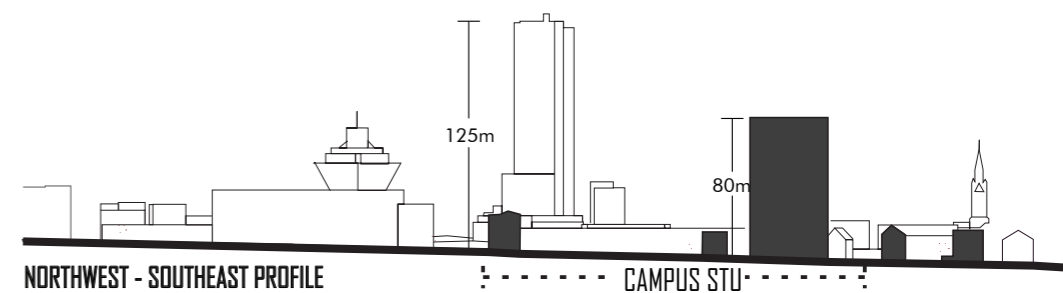
PLACE - CONTEXT / SITE





FULL AND EMPTY

- Internal voids within the blocks
- Exterior voids as public and private green spaces



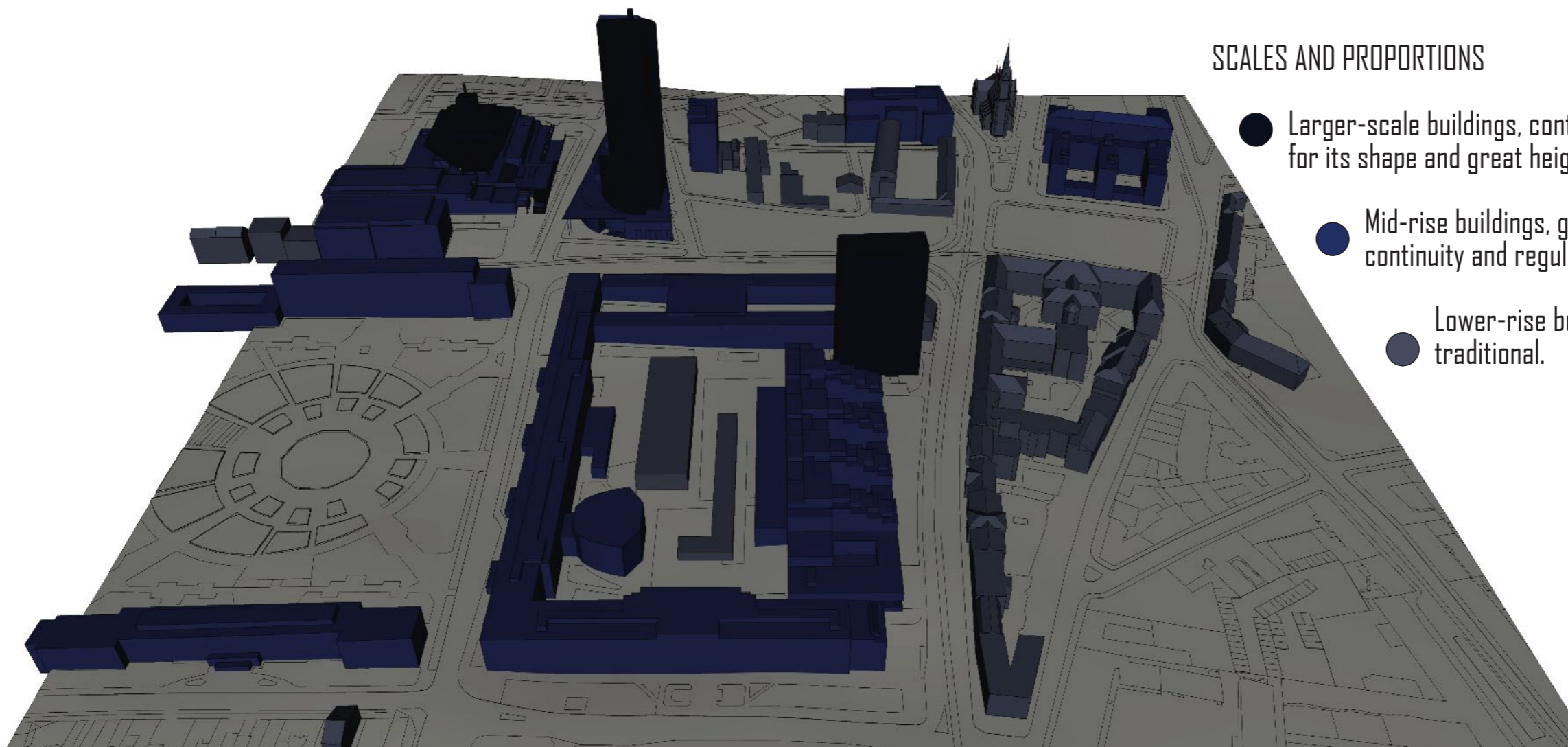
Urban Profile

- Immediate Heterogeneous Environment
- Irregular profile
- Contrast of different heights

TISSUE

- Mixed Urban Structure
- Typology of Urban with Irregular Plot

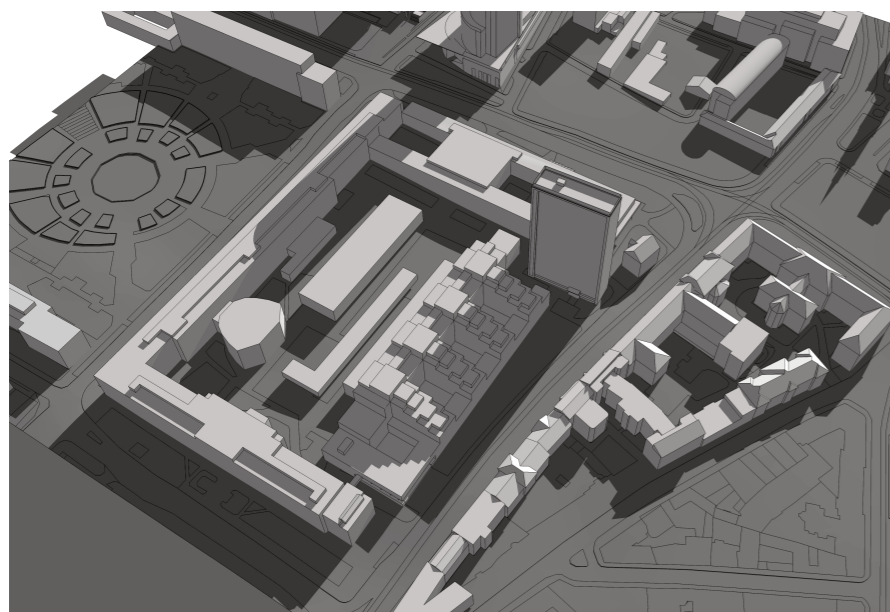




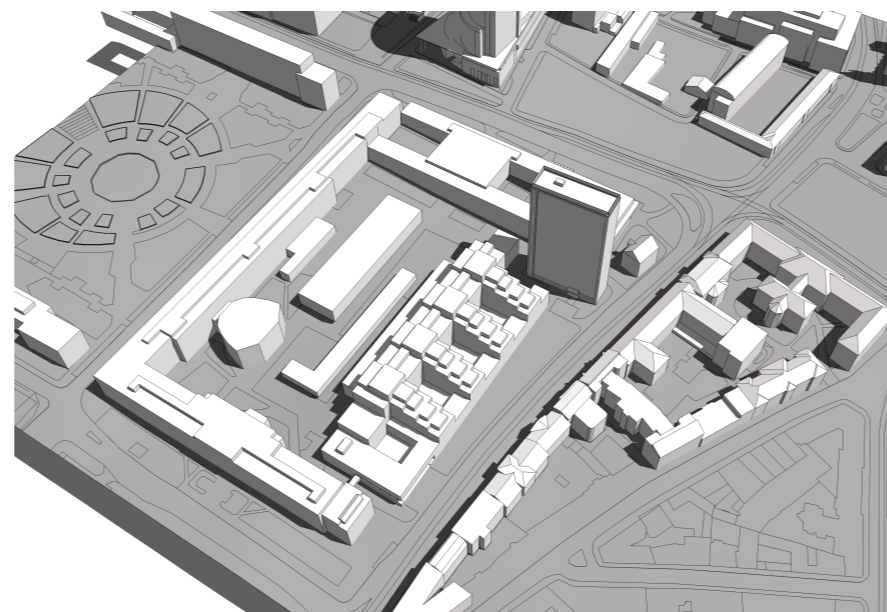
SCALES AND PROPORTIONS

- Larger-scale buildings, contrast in the environment for its shape and great height.
- Mid-rise buildings, give greater continuity and regularity to the urban profile.
- Lower-rise buildings, typologies traditional.

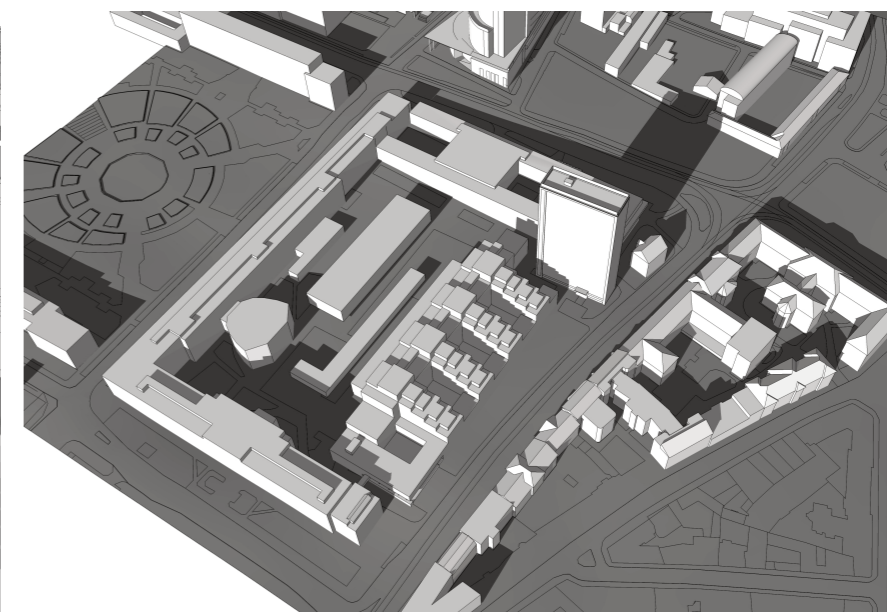
SUNNY



Early morning



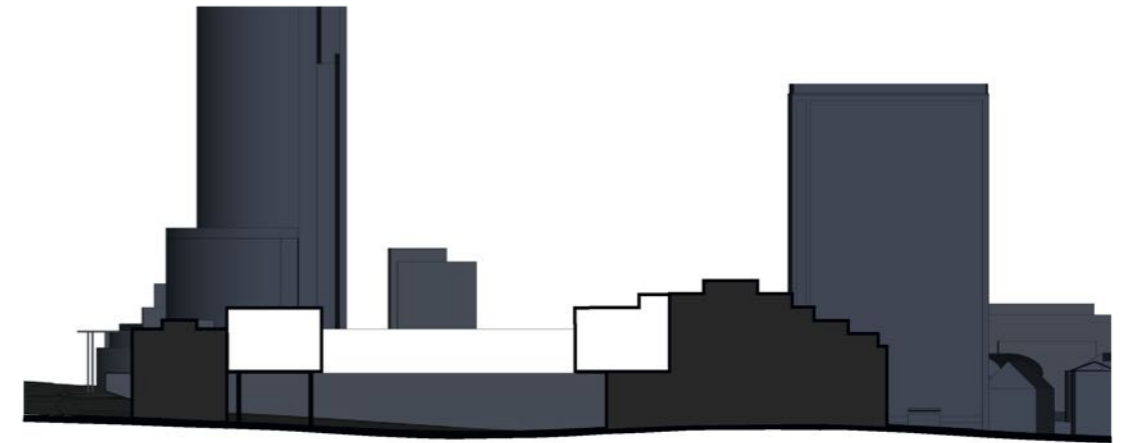
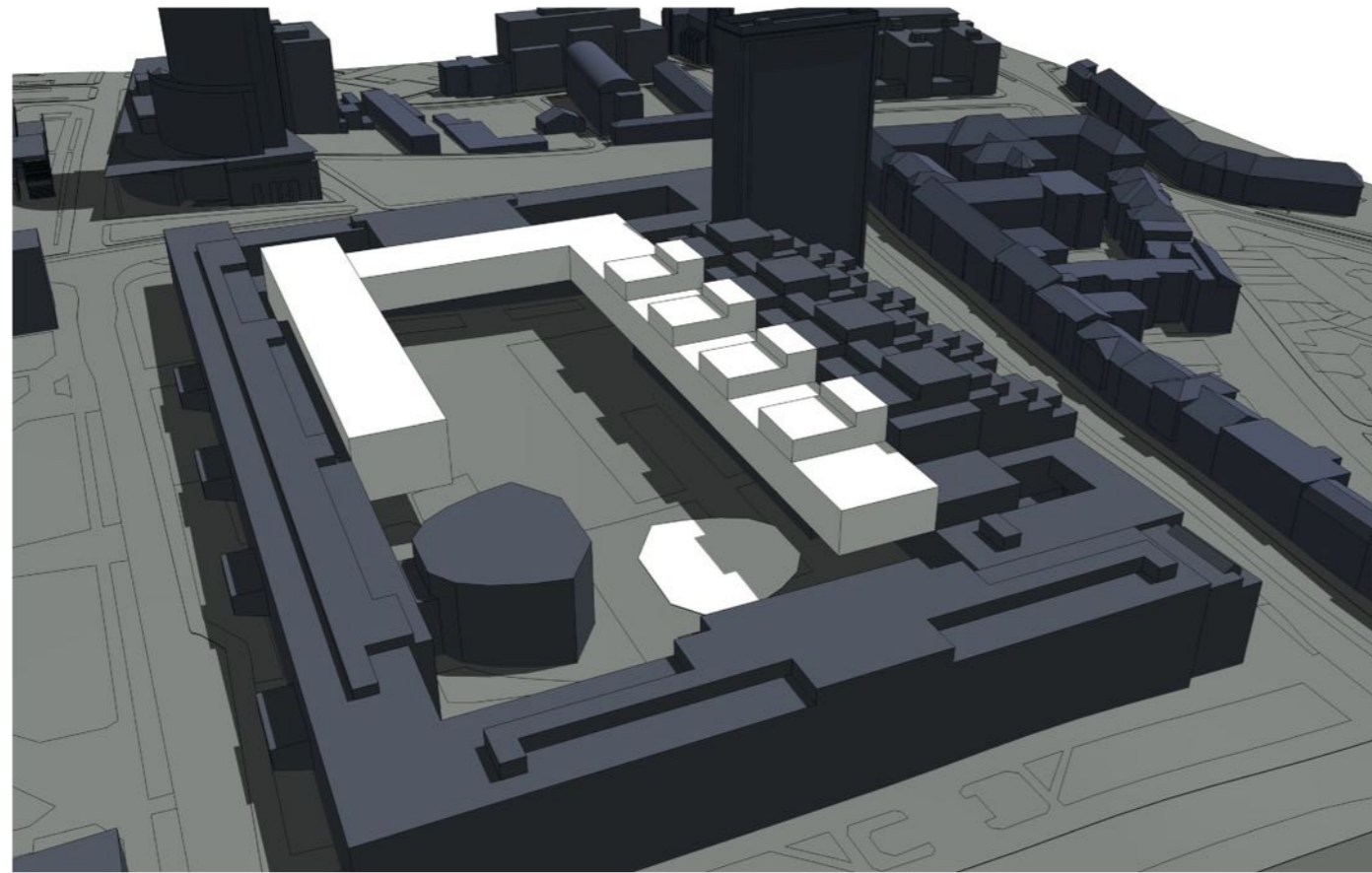
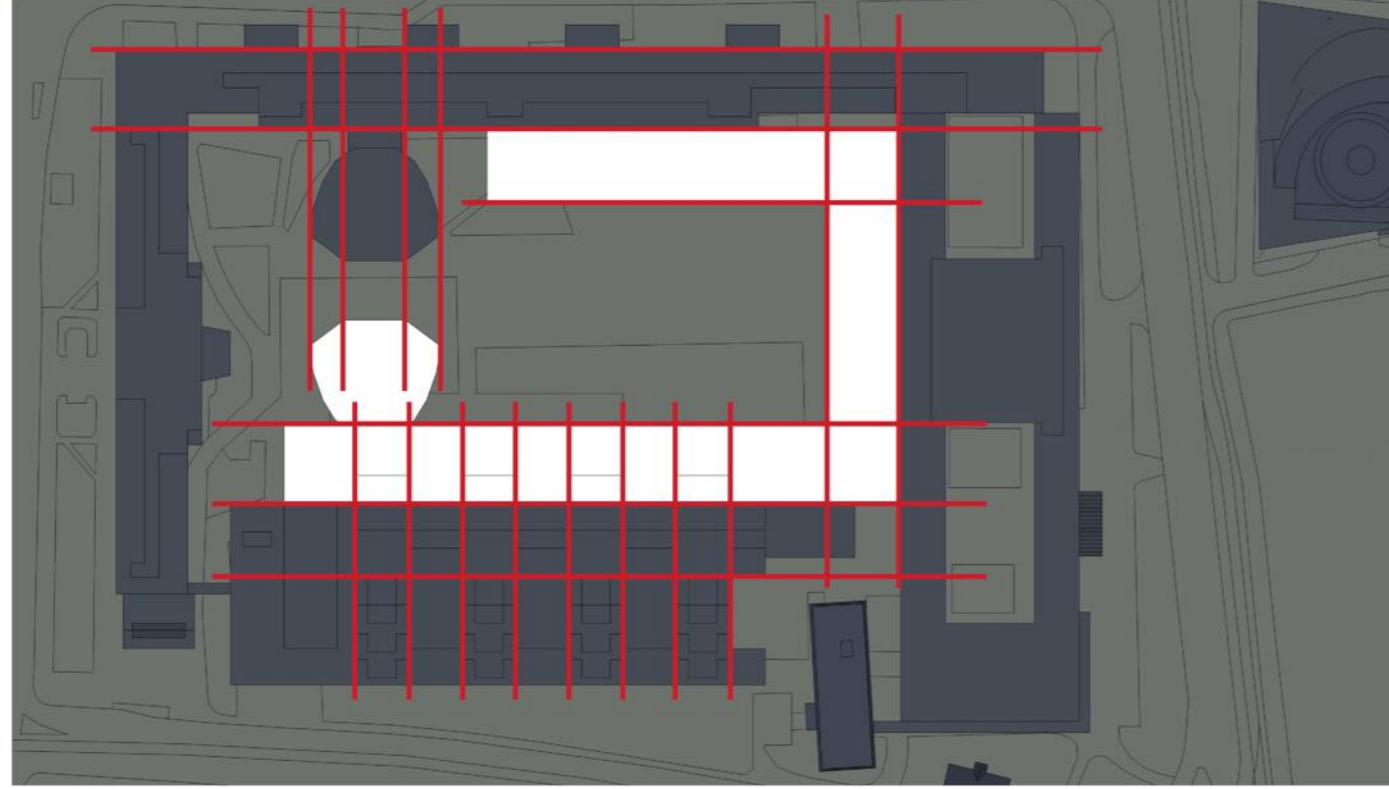
Noon hours



Late afternoon

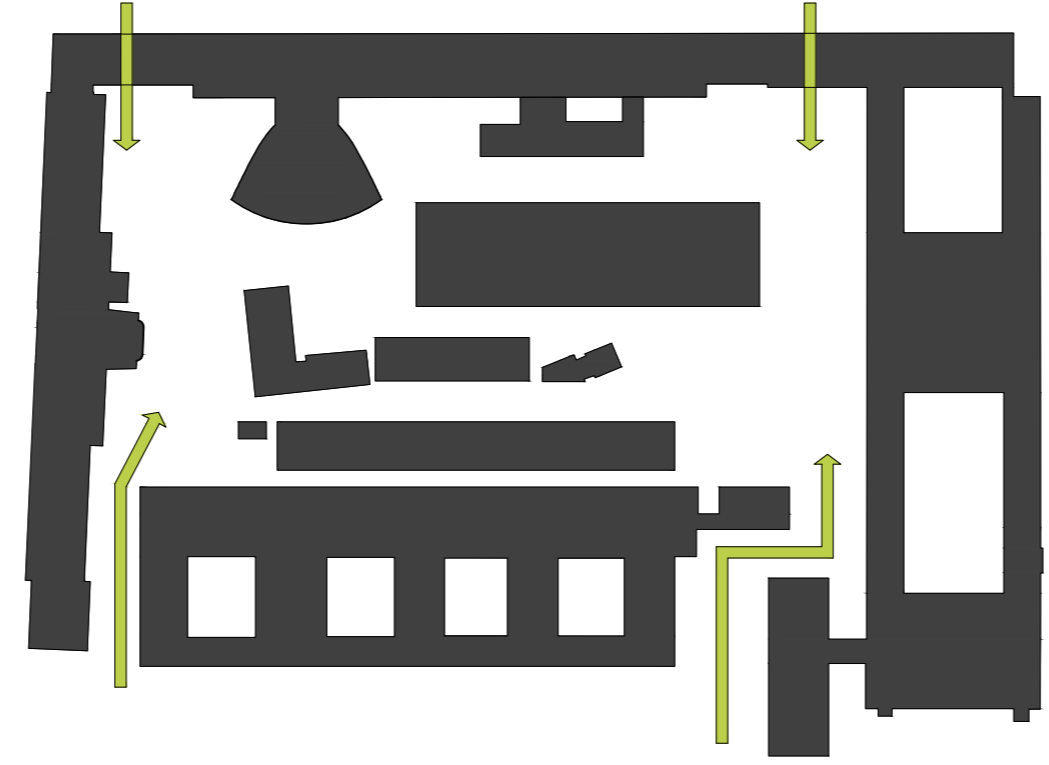
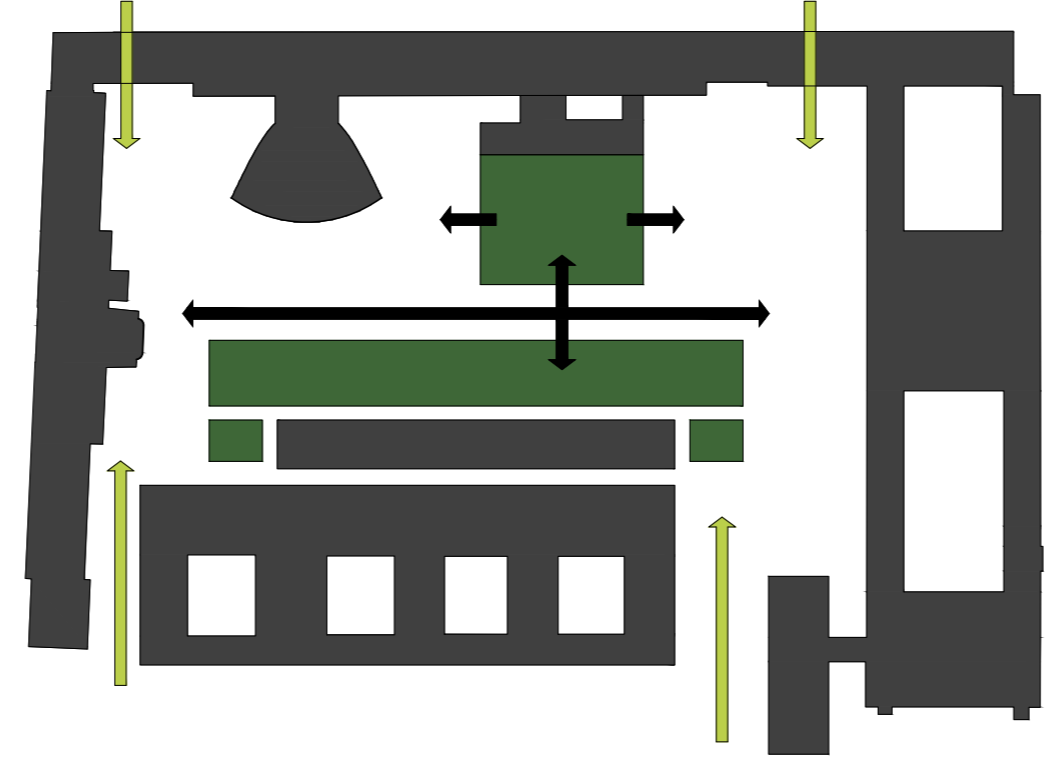
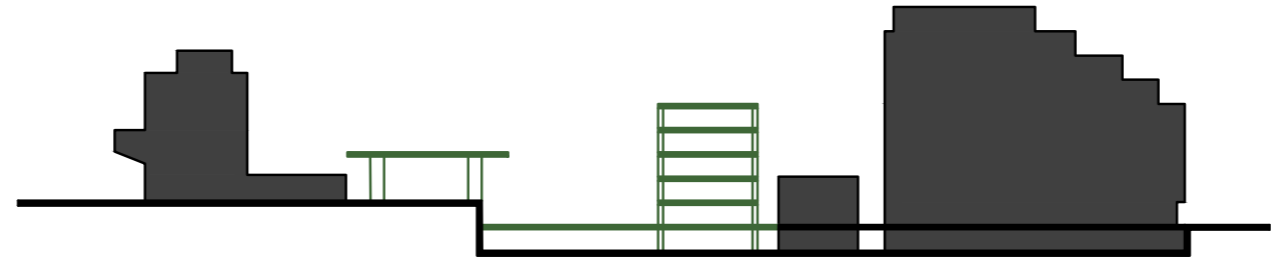


SITE OCCUPATION



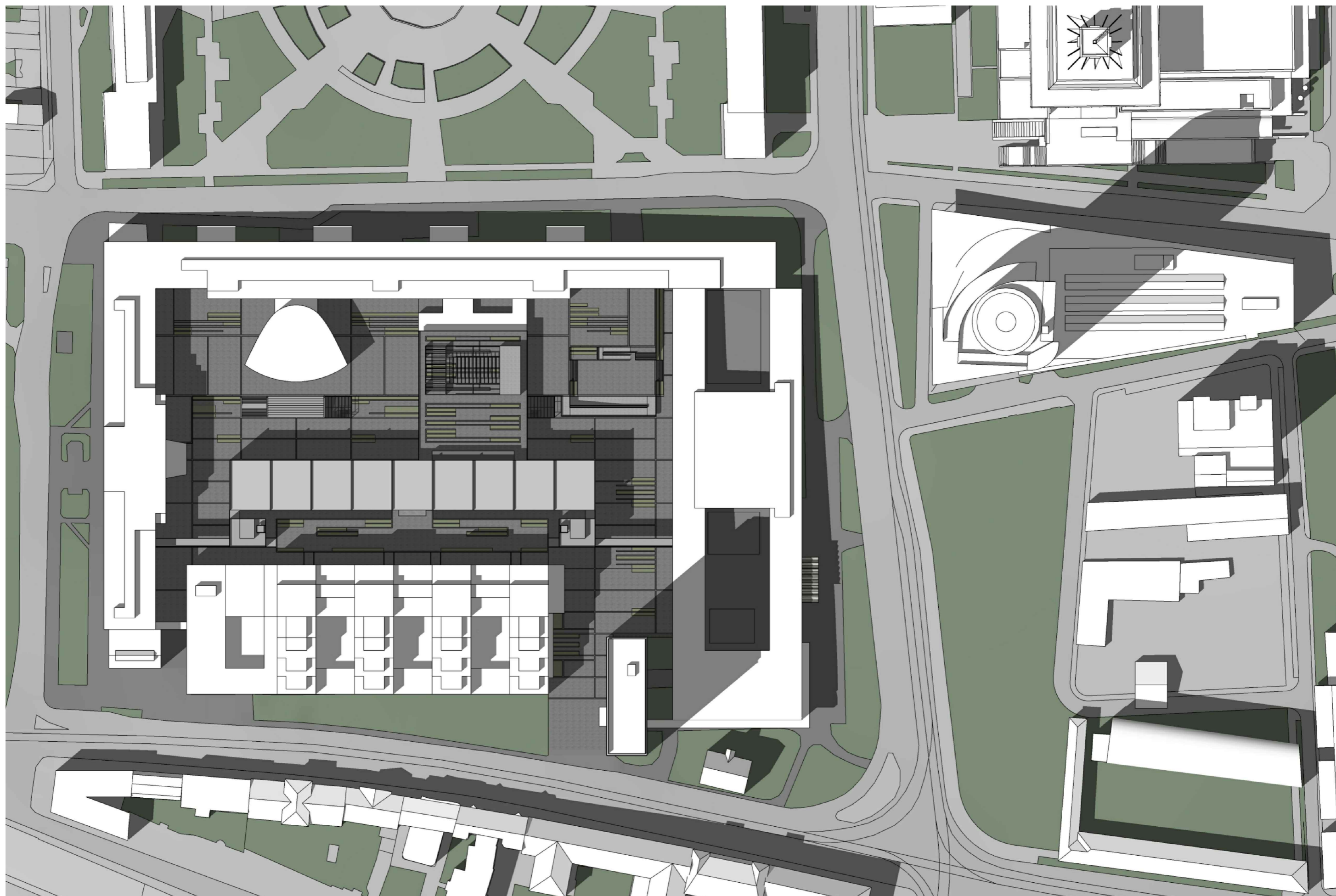
MATCH SCHEME

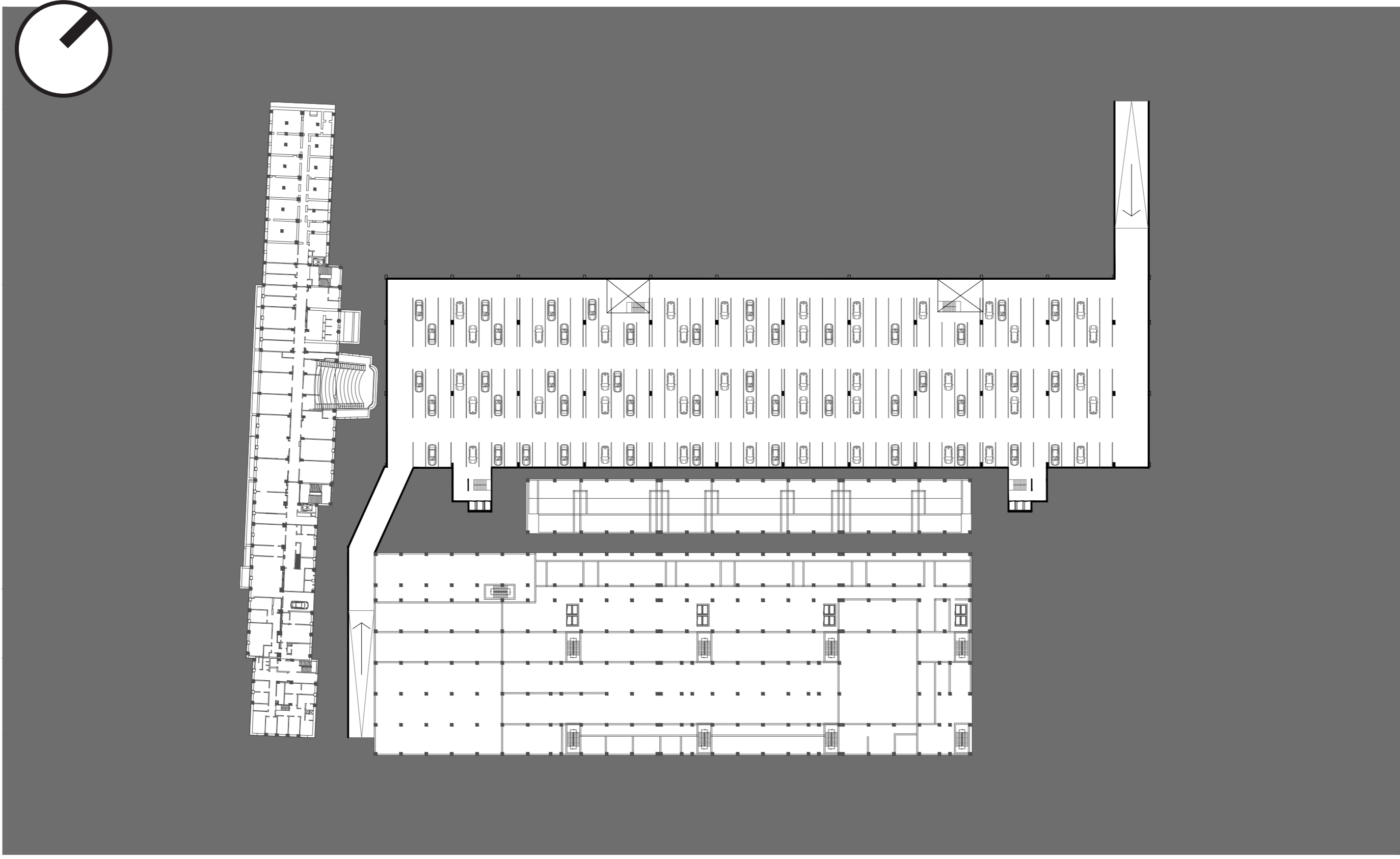


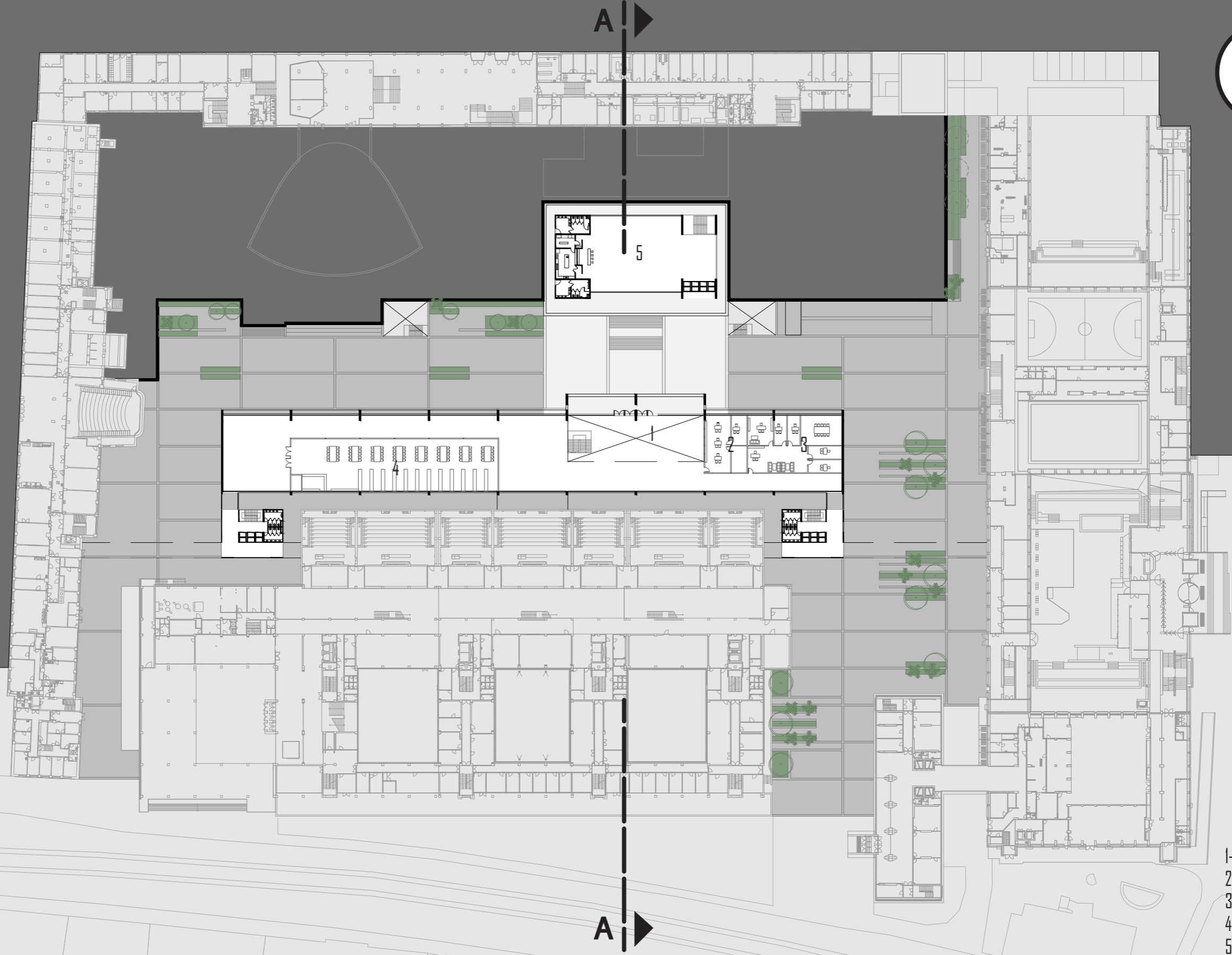


PLANIMETRY



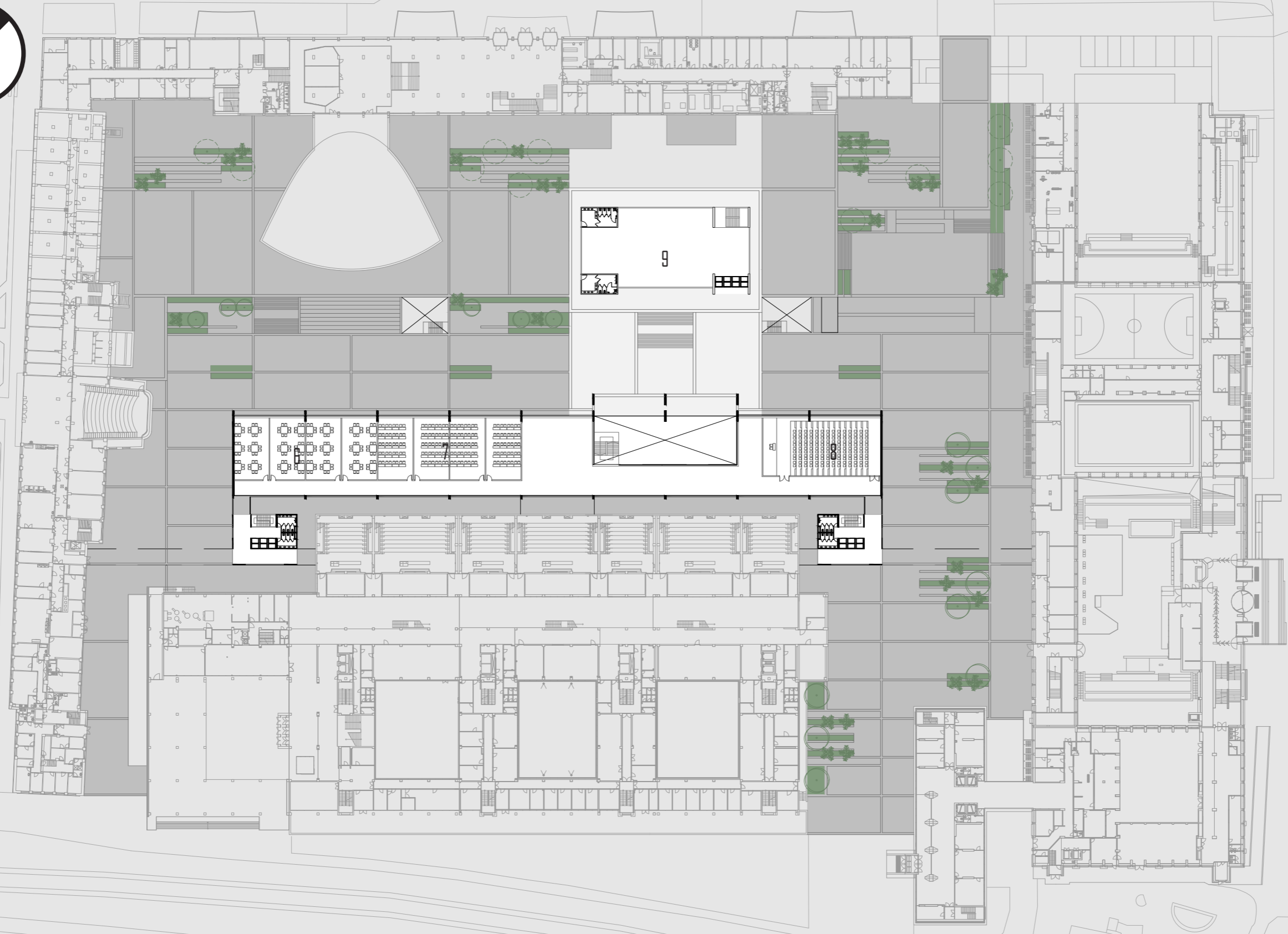
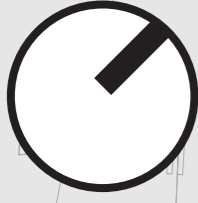






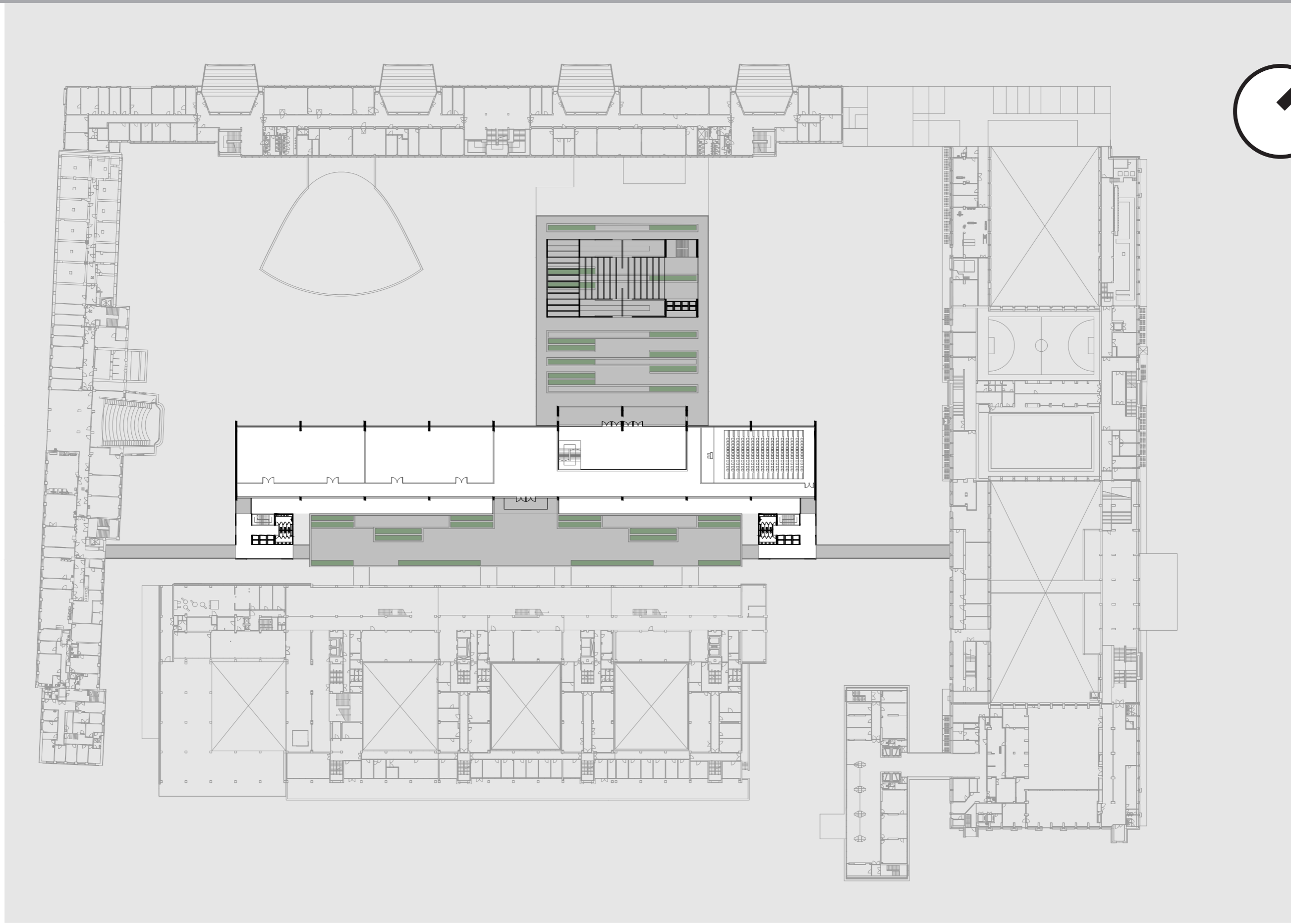
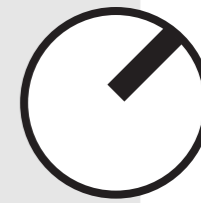
- 1- ACCESS HALL
- 2- INFO SERVICES
- 3- OFFICES OF THE RECTORATE
- 4- LIBRARY
- 5- RESTAURANTS

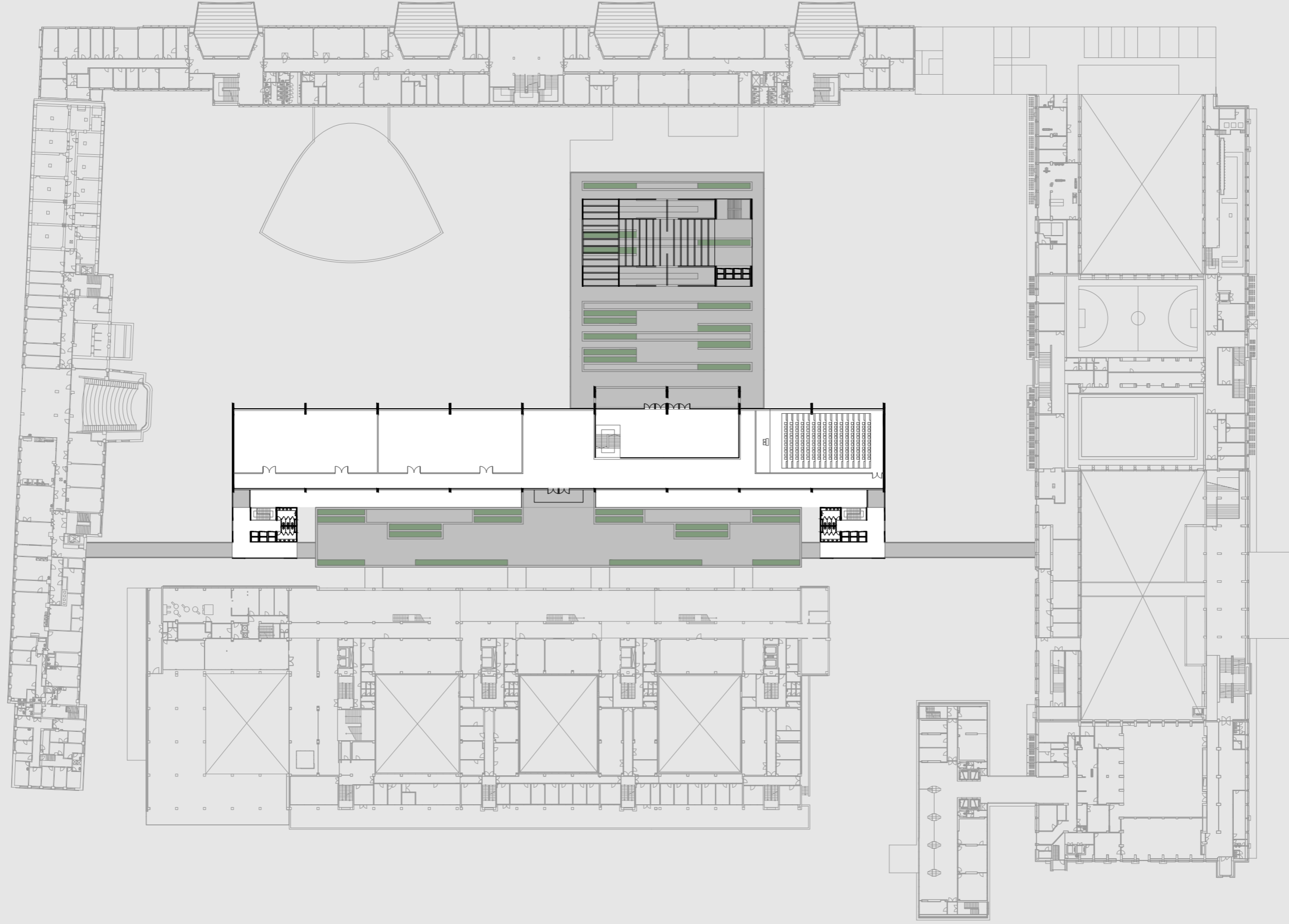
2 FLOOR LEVEL 148 msnm

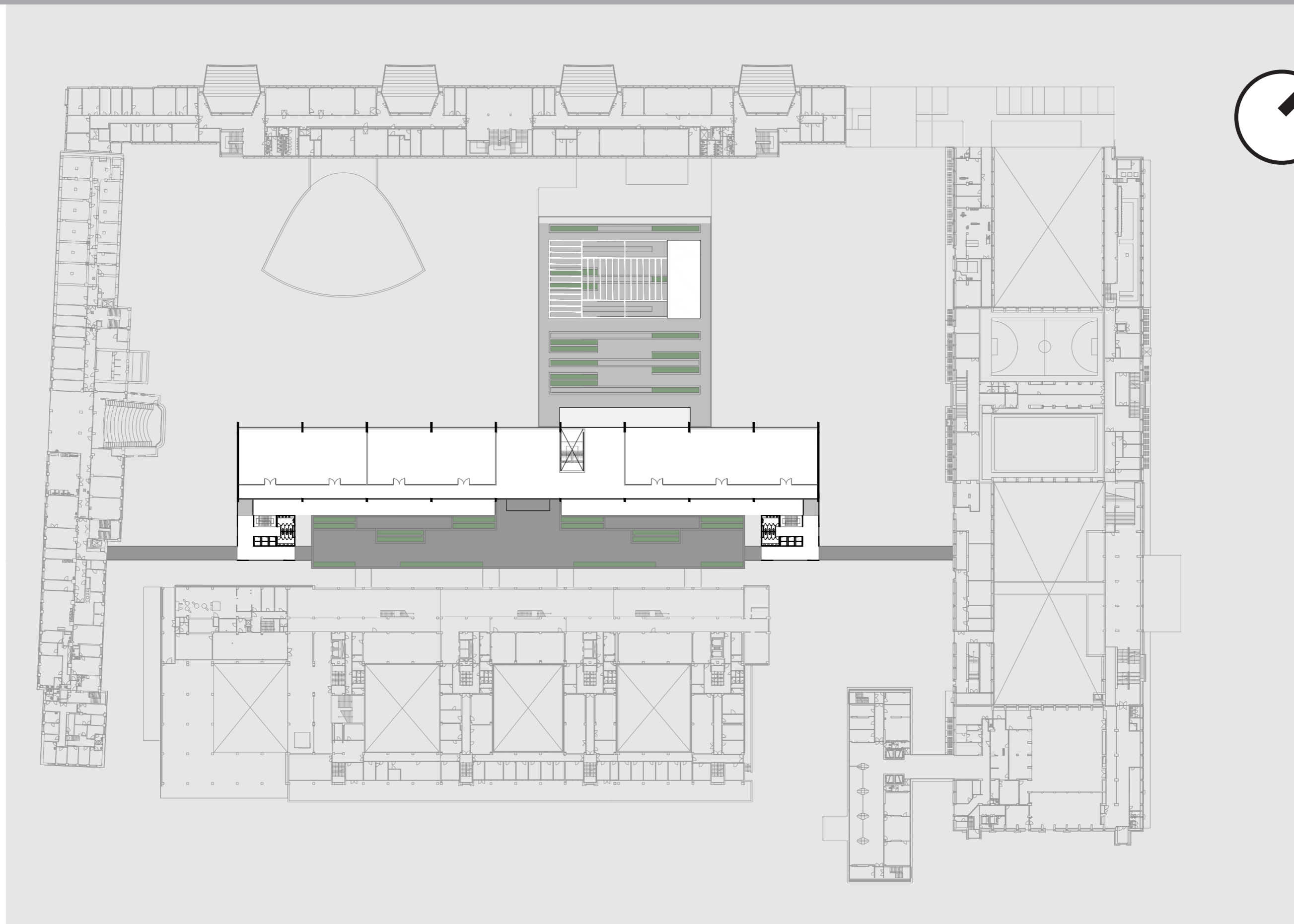


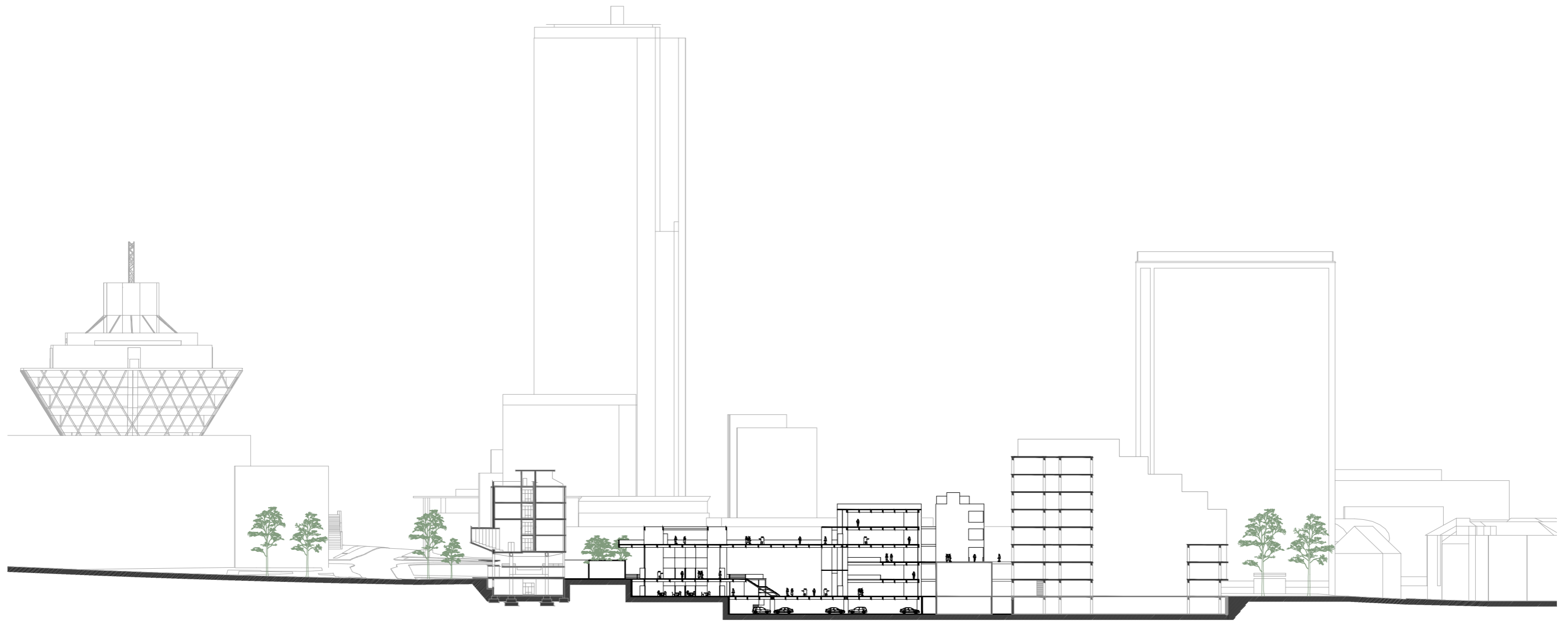
- 6- STUDIO
- 7- STUDY ROOMS
- 8- AMPHITHEATER
- 9- MULTIPURPOSE SPACES











CUT A-A

RENDERS



