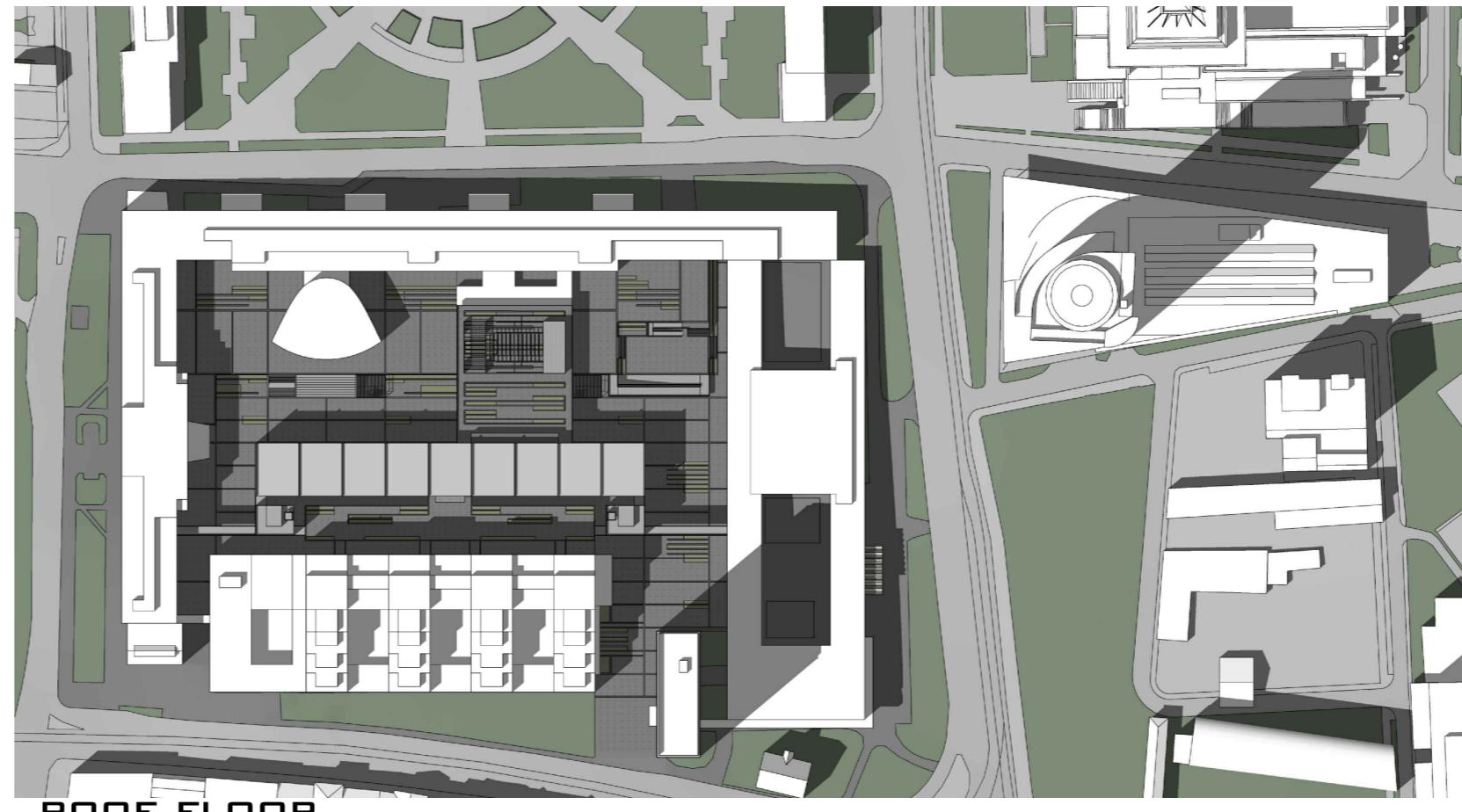
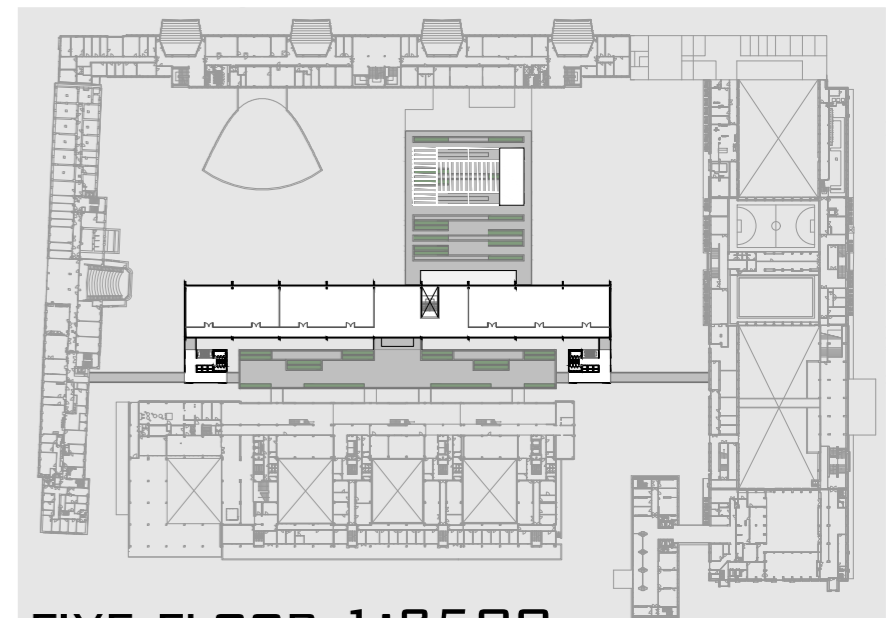


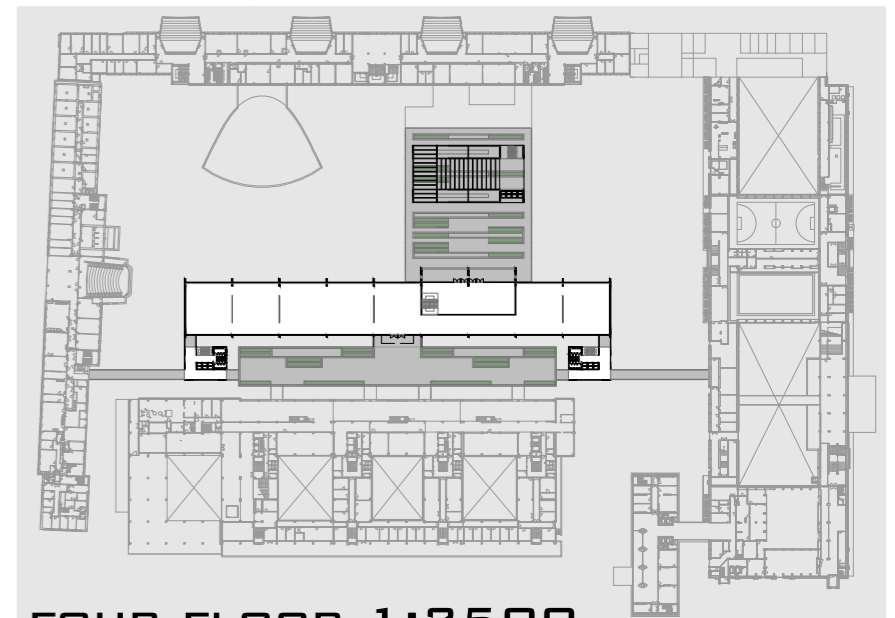
ASSEMBLY FLOOR



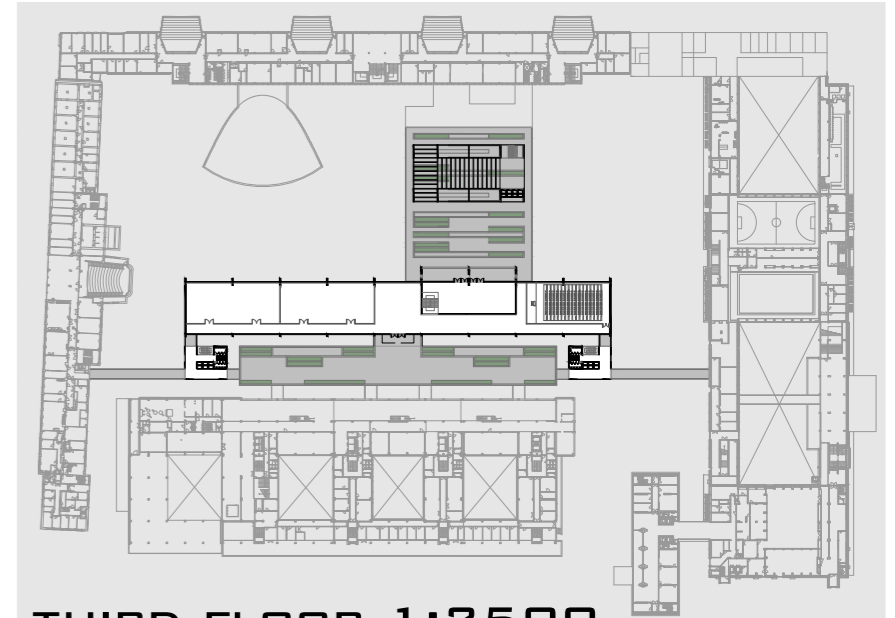
ROOF FLOOR



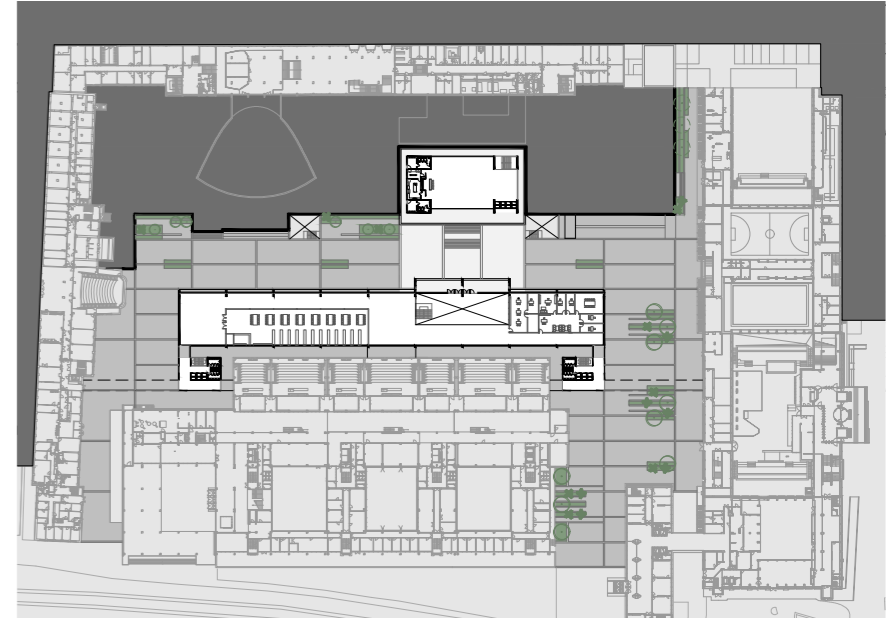
FIVE FLOOR 1:2500



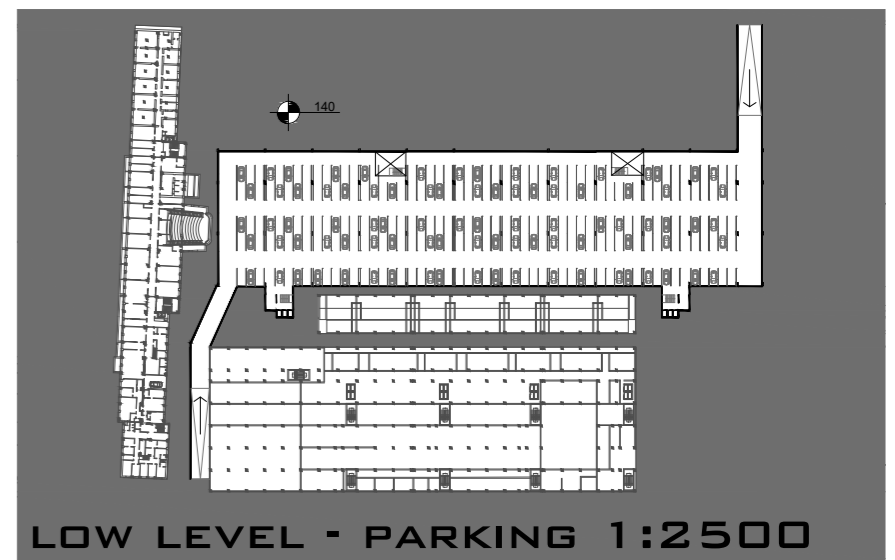
FOUR FLOOR 1:2500



THIRD FLOOR 1:2500



FIRST FLOOR 1:2500

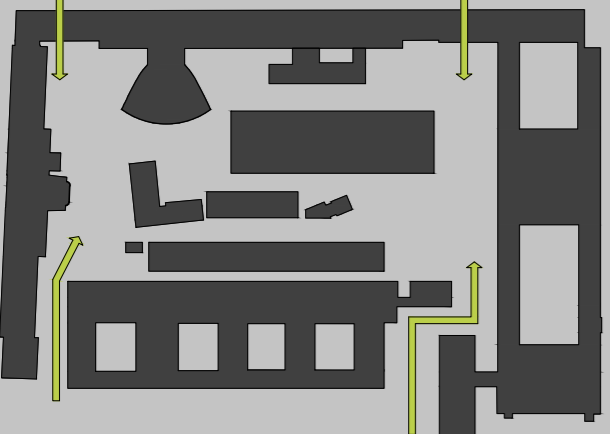


LOW LEVEL - PARKING 1:2500

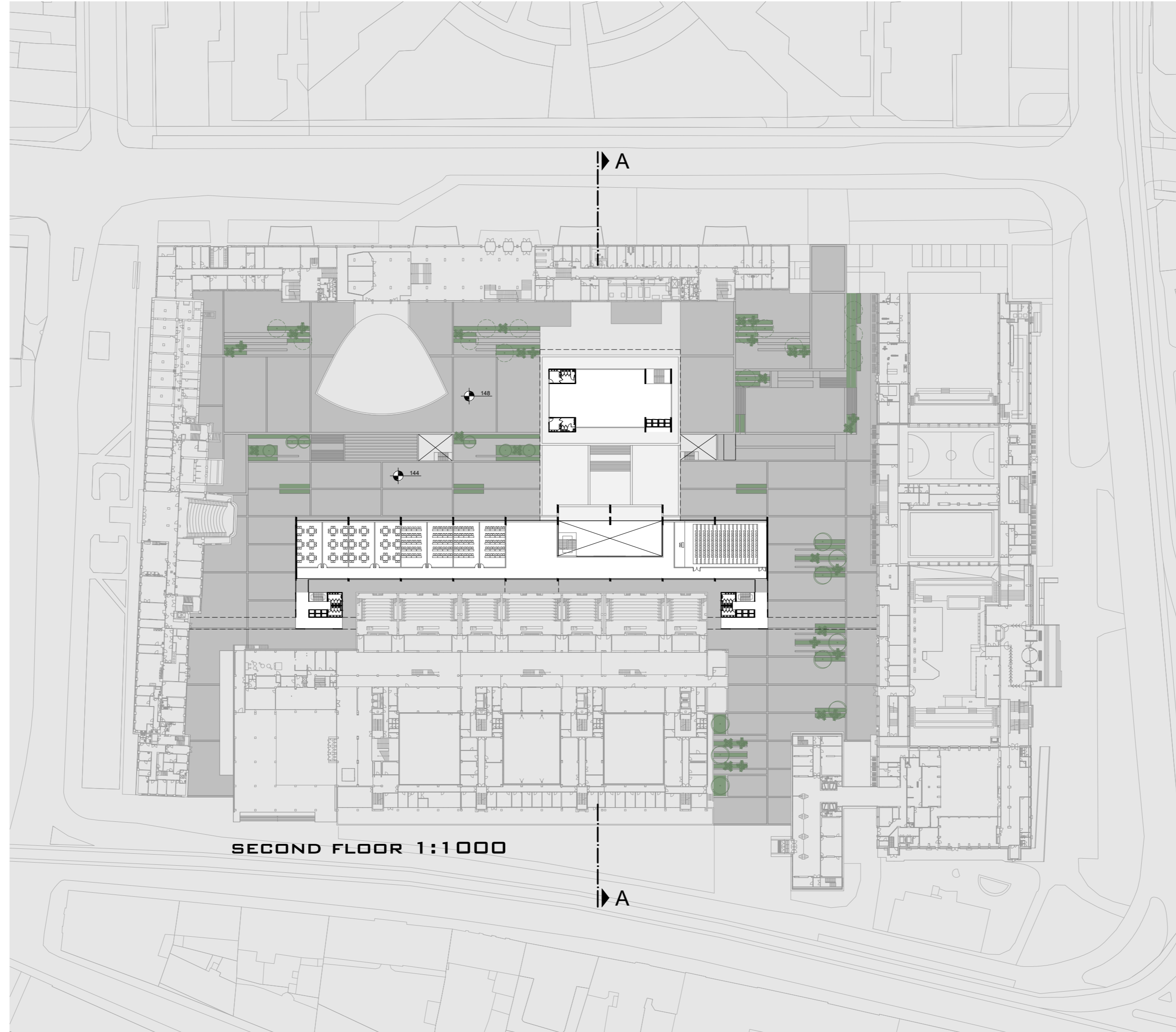
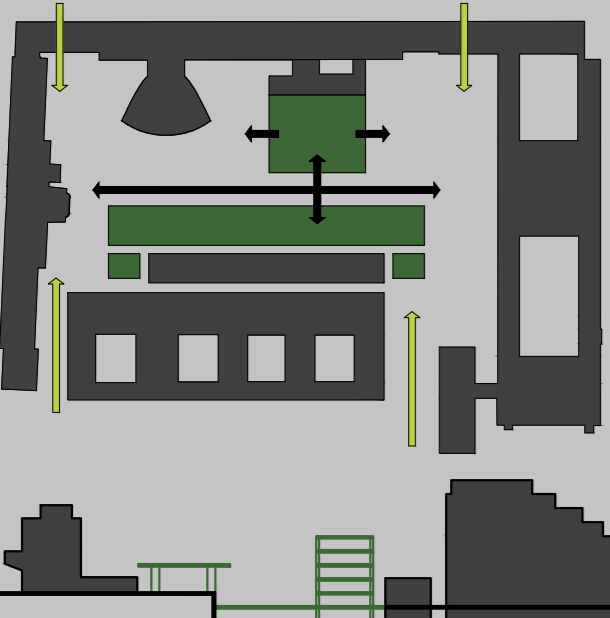
DESCRIPTIVE MEMORY

The proposal for the STU is based on a simple and regular approach, sensitive to the construction context, the central empty space is recovered, providing it with greater geometric regularity. Due to the changes in level by the slopes of the land, the starting point of the proposal was the leveling and structuring of the land, in only three levels of equal heights. The incorporation of a new building, made up of a block and a glass box, with its new activities and a system of vertical circulation cores and services, improve and optimize the operation and relationships between the existing buildings and the new building.

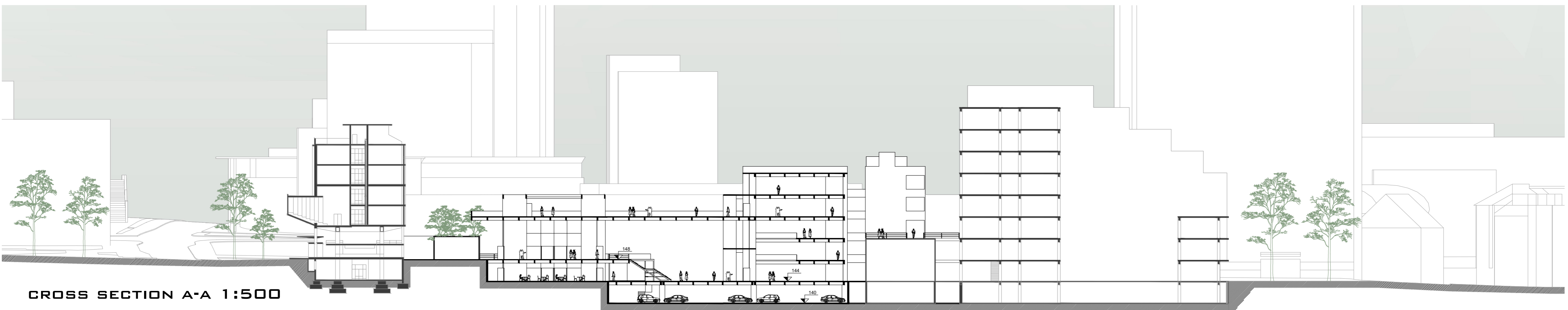
SITE EXPLORATION



MATCH SCHEME



SECOND FLOOR 1:1000



CROSS SECTION A-A 1:500

