

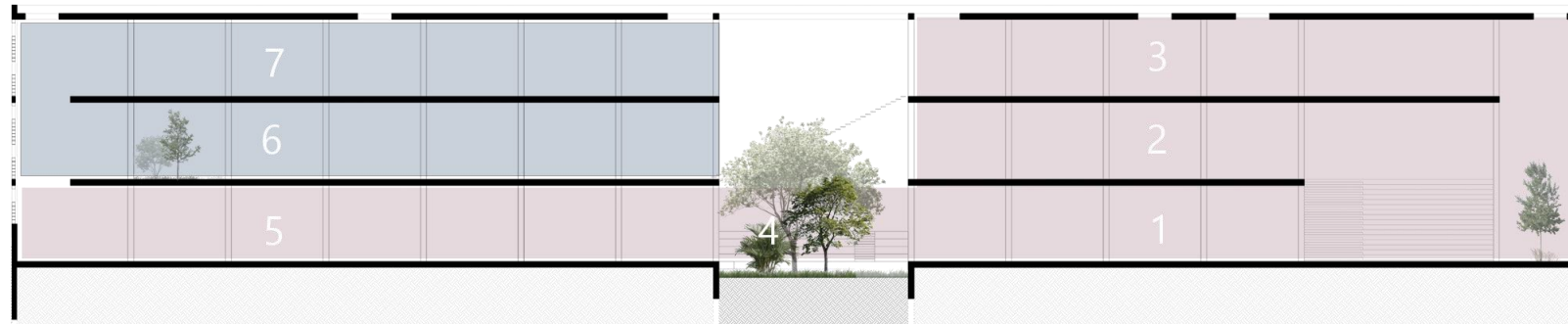


| STU Green House

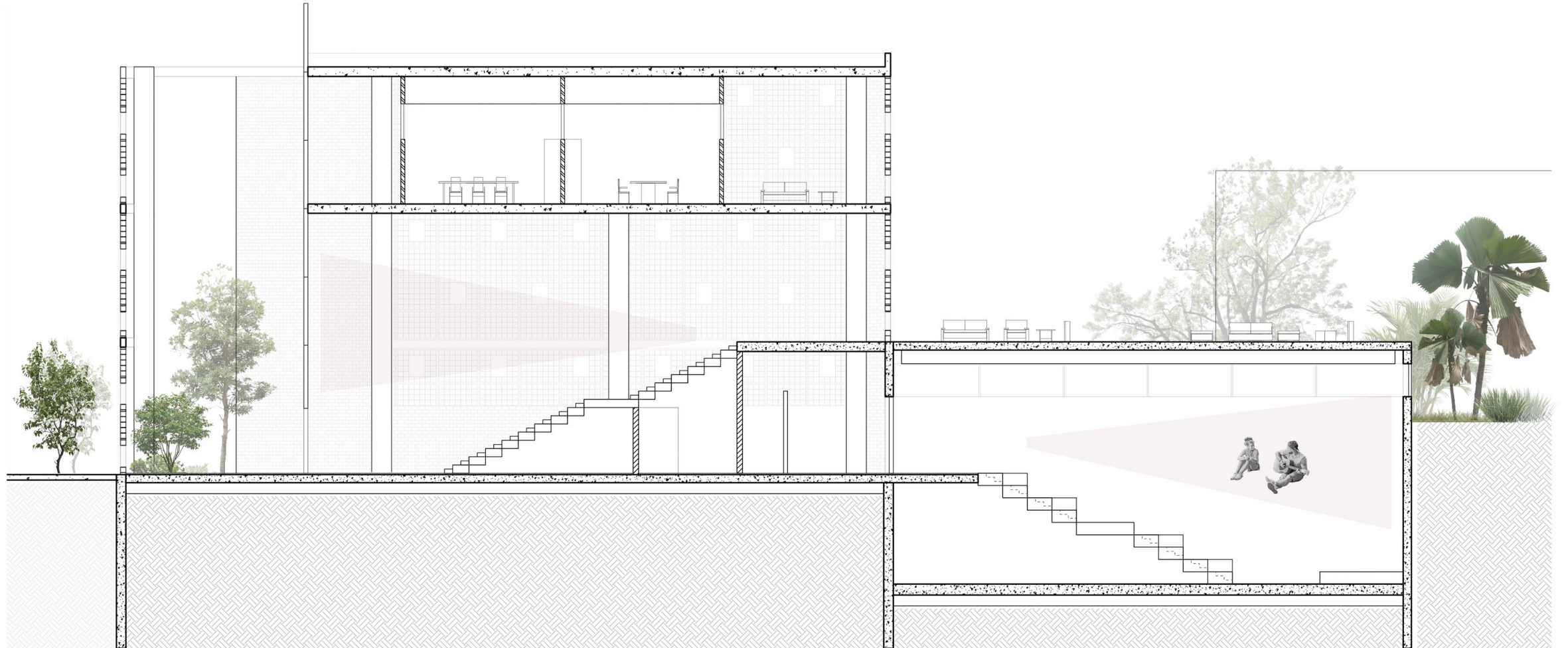
| Program

STUDY PUBLIC

The building will take part in the municipal system and will make academic work accessible to its surroundings by opening of a public passage from Radlinského Street. .

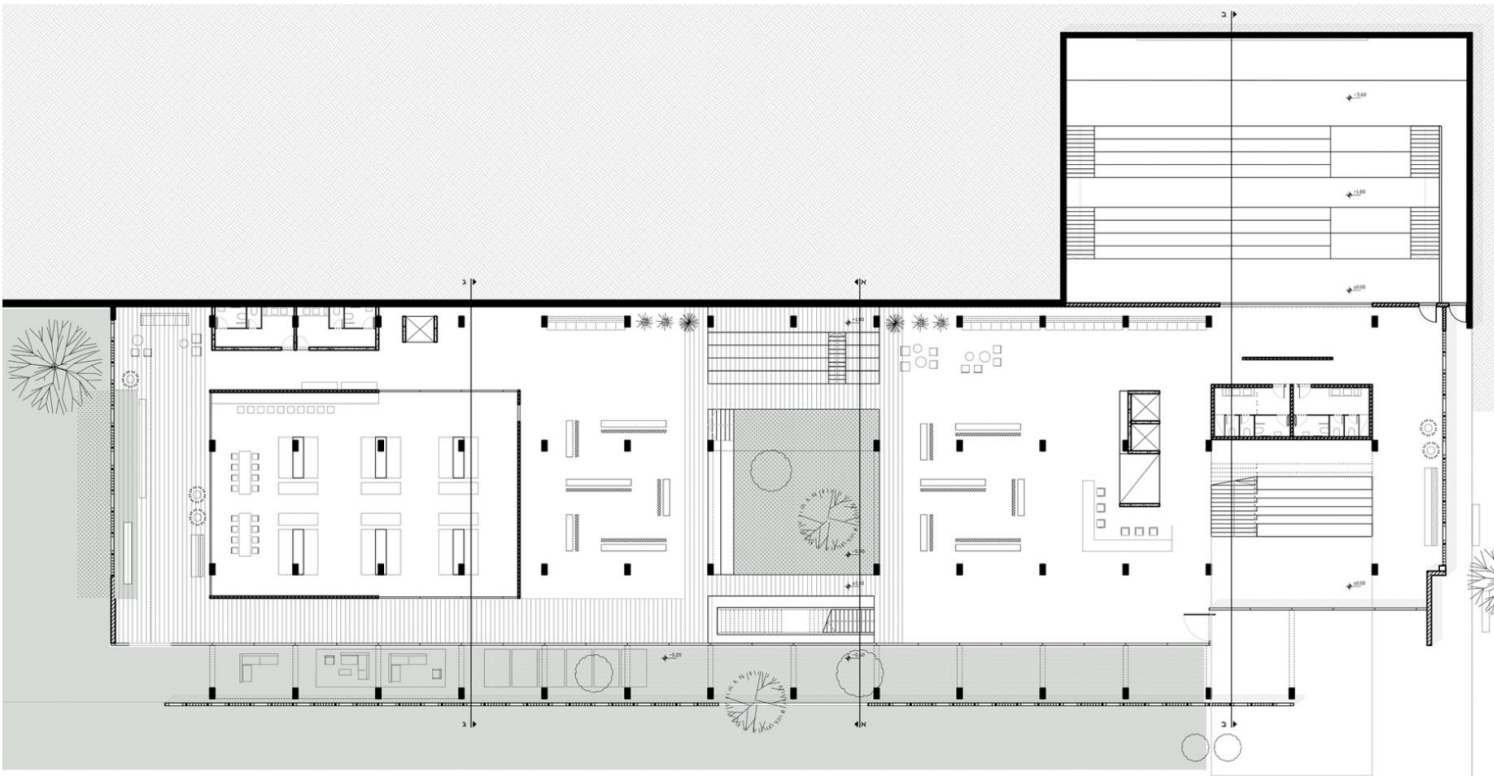


- ① Entrance and Display
- ② Food area
- ③ Offices and administration
- ④ Atrium- Living room
- ⑤ Materials Library
- ⑥ Shared learning spaces
- ⑦ Closed learning spaces



B-B Section

Scale 1:100





|Ground Floor
from public space to study area



|Ground Floor
from public space to study area



|Ground Floor
Entrance space



The project responds to the relationship between structure and nature in Bratislava.

The project uses the abandoned laboratory building and offers a green environment that blurs the boundary between outdoor and indoor spaces.

The laboratory building located in the center of the campus, The purpose of the project is to merge the outer spaces and the interior spaces in the building and thus **change its purpose from a building intended for machines to a building used by human society.**

I STU Green House

The project responds to the relationship between structure and nature in Bratislava. The project uses the abandoned laboratory building and offers a green environment that blurs the boundary between outdoor and indoor spaces.

The laboratory building located in the center of the campus, The purpose of the project is to merge the outer spaces and the interior spaces in the building and thus change its purpose from a building intended for machines to a building used by human society.



| Program

STUDY PUBLIC

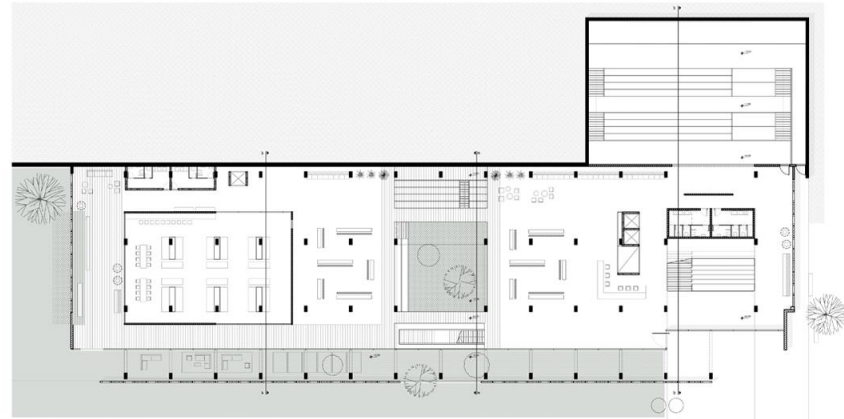
The building will take part in the municipal system and will make academic work accessible to its surroundings by opening of a public passage from Radlinského Street .



- ① Entrance and Display
- ② Food area
- ③ Offices and administration
- ④ Atrium- Living room
- ⑤ Materials Library
- ⑥ Shared learning spaces
- ⑦ Closed learning spaces

| Design Principles

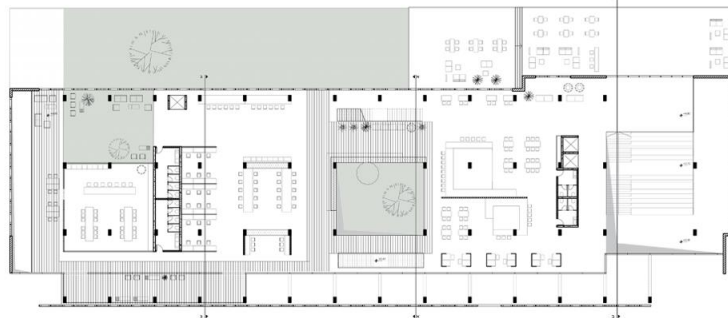
- Preservation of the building envelope - glass bricks
- Introduction of natural values to the structure - air flow, vegetation, natural lighting, spectator-observed relations
- Maintaining human space in an industrial space



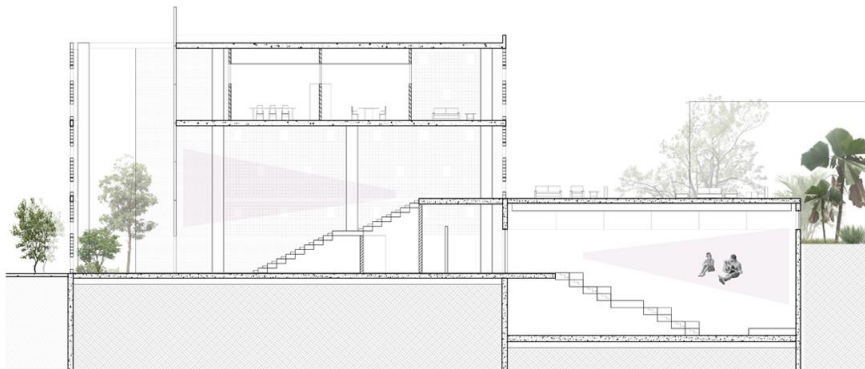
1 ground floor



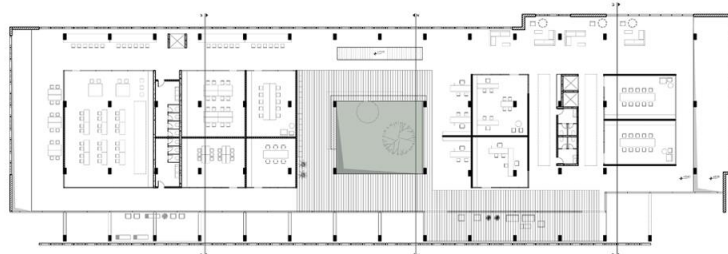
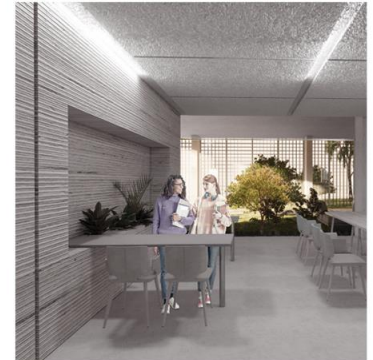
A-A Section



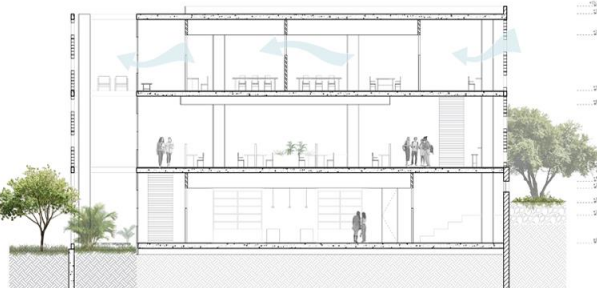
1 first floor



B-B Section



1 second floor



C-C Section



East facade

