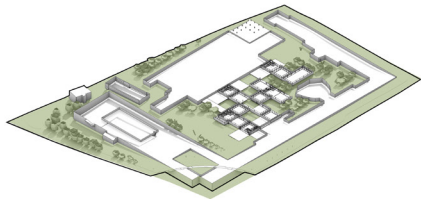


## Expanding levels

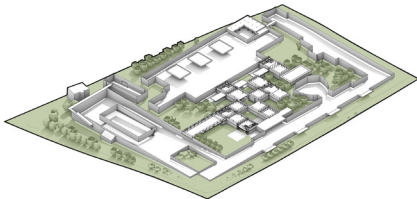
0/6

80% of the land for green areas are parks and courtyards.



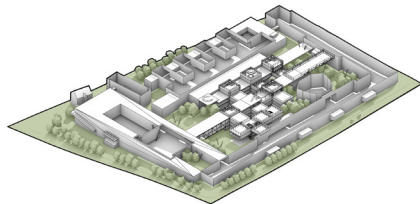
1/6

Preserving trees and connections with the environment.



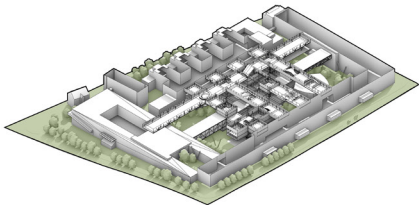
2/6

Connection of buildings with bridges-crossings



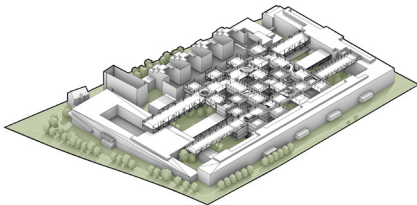
3/6

The diversity and uniqueness of each floor.



4/6

Creating a new city grid with squares and streets.



5/6

Creating a new panorama of the city.

