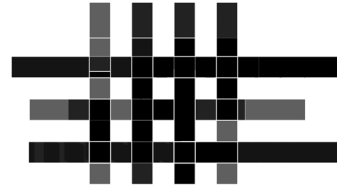


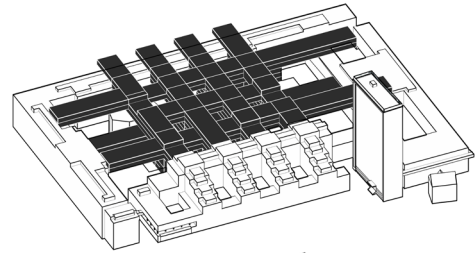
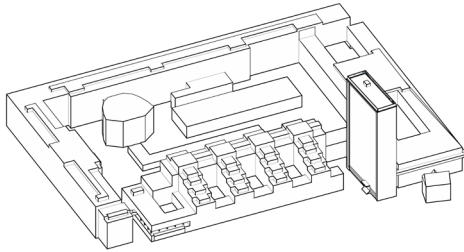
Creating a new spatial **grid**
based on a 3-dimensional
crossroads system.



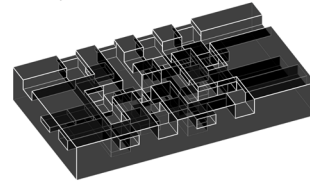
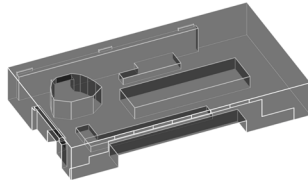
A new type of **courtyard**
with many levels and
atriums.



Environment
axonometry



Axonometry of the
courtyard



VOLUME

$5.23249739 \times 10^{14}$ (+/- 1×10^5) cubic millimeters

4.3995816×10^{14} (+/- 1×10^5) cubic millimeters