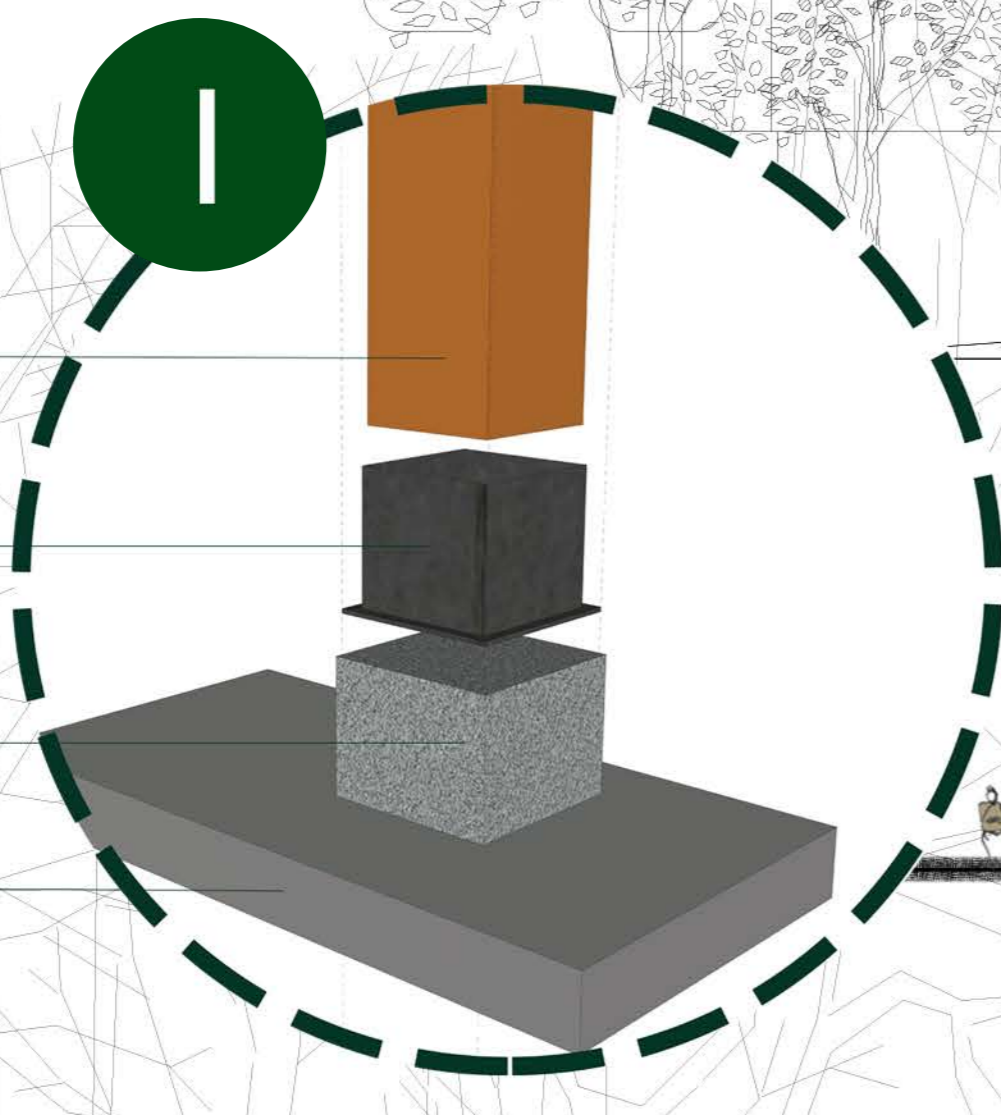




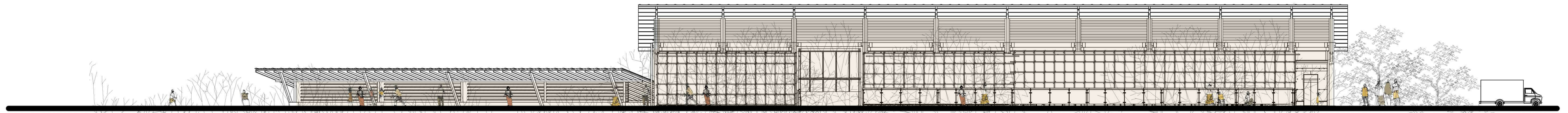
- EXTERNAL TIMBER CLADDIG
- FURRING STRIPS
- INSULATING EXTERIOR SHEATHERING
- INSULATION IN STUD SPACE
- 75MM X 100MM STUD WALL @600MM
- INTERIOR TIMBER WALL BOARD



- 75MM X 100MM TIMBER STUD WALL PLACED AT 600MM APART
- 75MM X 100MM SINGLE TOP PLATE
- 75MM X 100MM DOUBLE TOP PLATE

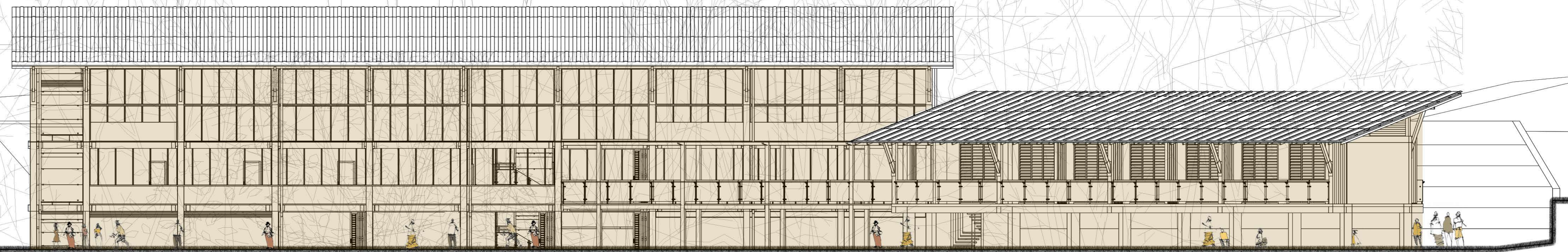


- 100MM TK CONCRETE SLAB ON GRADE
- 300MM X 300MM CONCRETE PLINTH
- STEEL CONNECTING BOX FASTENED BY STEEL FASTENING SCREWS
- 300MM X 300MM TREATED CROSS LAMINATED TIMBER COLUMN



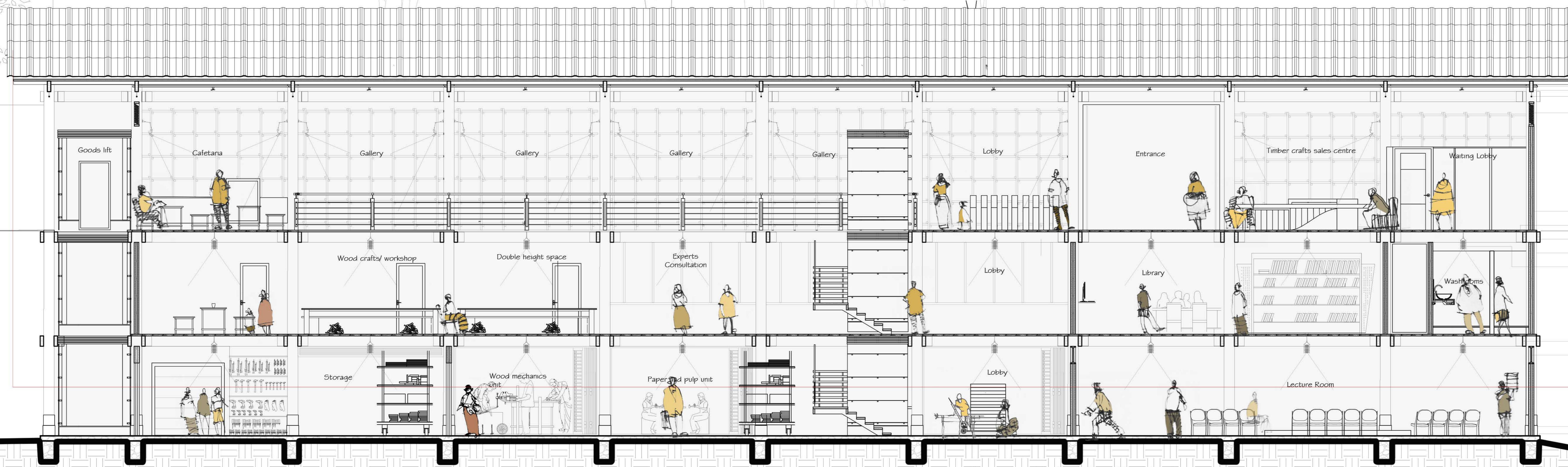
ROAD SIDE ELEVATION 1:100

Public level at the road level and an open roof for a welcoming feeling. Timber façade gives the identity.



RAILWAY SIDE ELEVATION 1:100

A view with contrasting two wings for the railway passengers make the site an iconic place for the journey.



- ZN/AL ROOFING SHEET
- 25MM TK TIMBER CEILING BOARDS
- 75MM X 75MM TIMBER REEPERS
- FIRE SPRINKLER SYSTEM
- 100MM X 300MM TIMBER BEAM
- STEEL SUPPORTING V STRUT
- LOUVERED WINDOW STRIP
- 150MM TK INSULATED TIMBER WALL
- 25MM THICK TIMBER FLOOR PLANK
- TIMBER LOUVERED PIVOT WINDOW
- TIMBER LOUVERED FOLDING WINDOW
- TIMBER DESIGNER LIGHT FITTING
- STEEL CONNECTING PLATE
- 10MM TK ACOUSTIC GLASS
- 300MM X 300MM CONCRETE BASE
- 100MM TK RUBBLE POINT STONE FINISH
- 450MM THICK RUBBLE FOUNDATION

SECTION C 1:50

A longitudinal section showing the vertical connection throughout the building.