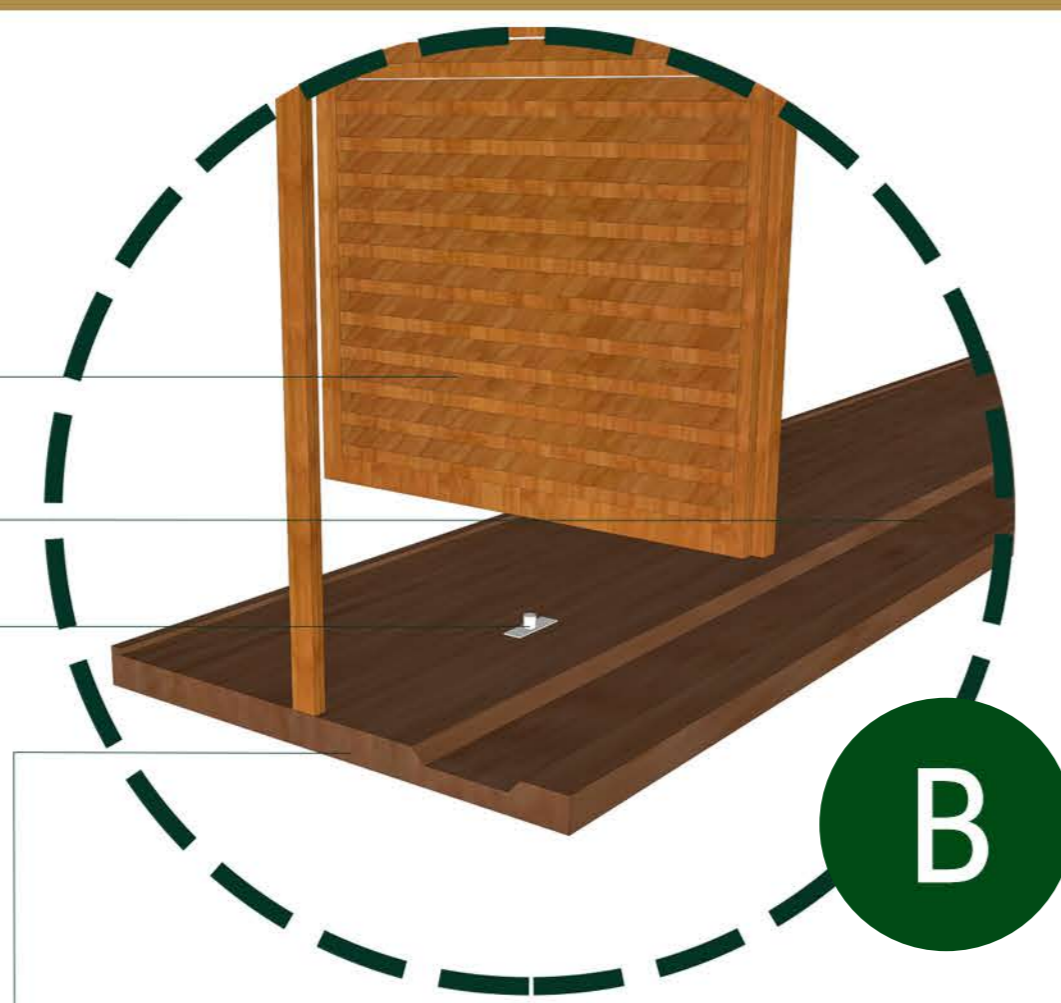
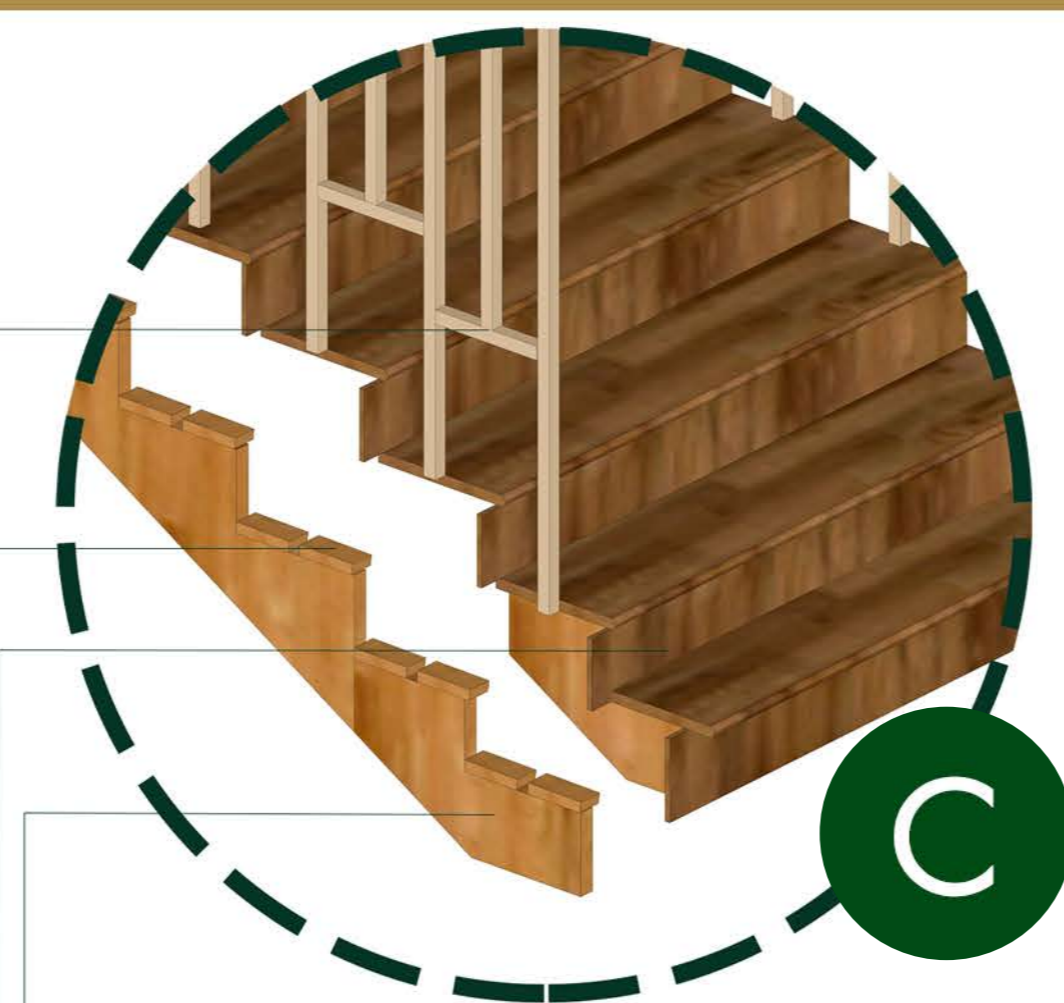


- 300MM X 300MM CROSS LAMINATED TIMBER COLUMN
- 75MM X 225MM TIMBER PROP FIXED BY STEEL CONNECTORS
- 100MM X 300MM TIMBER BEAM FIXED BY STEEL CORNER ANGLES
- 100MM X 300MM TIMBER RAFTER



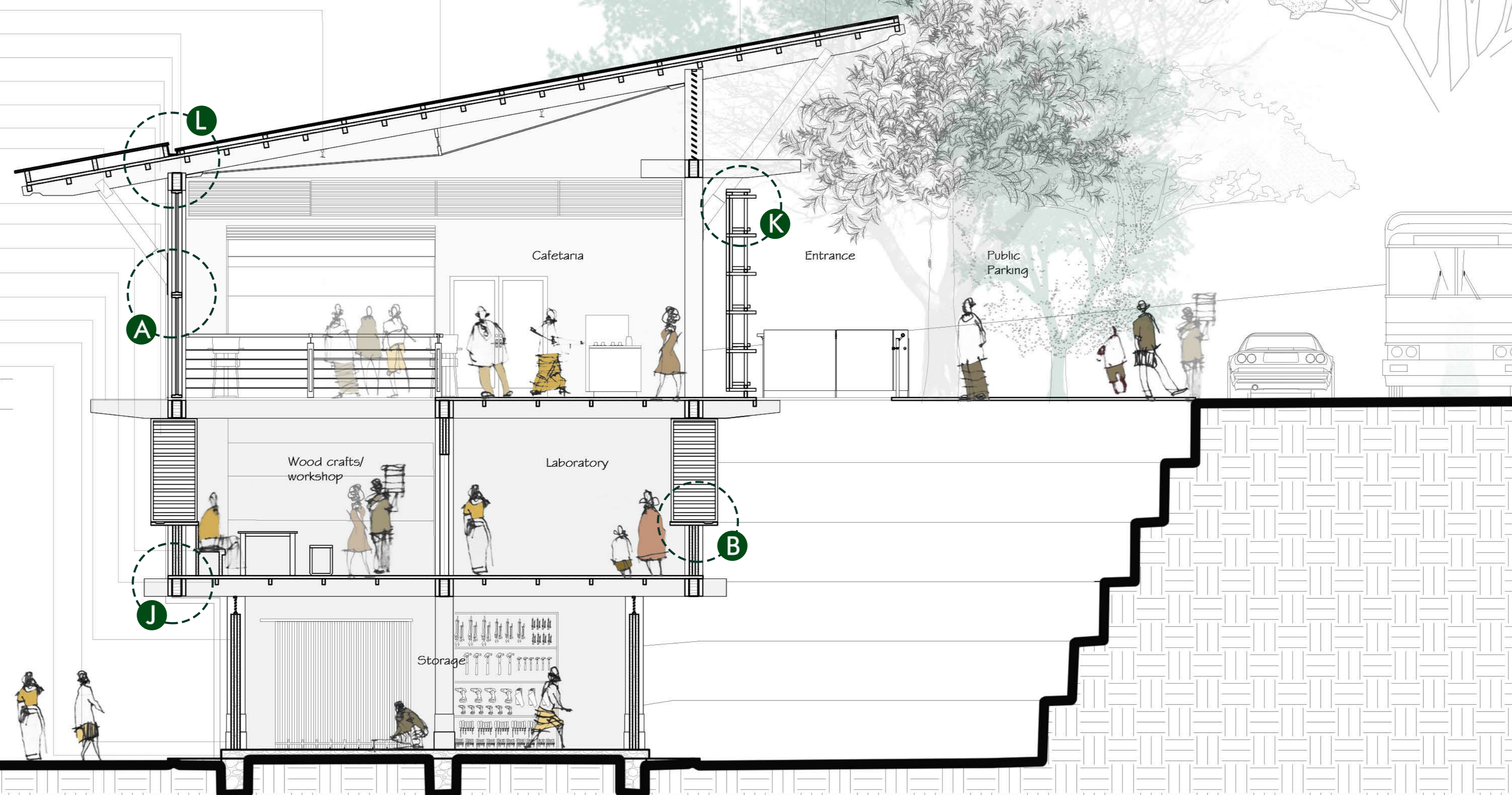
- 50MM TK TIMBER SHADING DEVICE
- CENTRE PIVOT HINGE
- DESIGNED DRAINAGE FOR RAINWATER
- TIMBER LOUVERED PIVOTED WINDOW



- 25MM TK SIDE SUPPORT PLANK
- 25MM TK RISER AND TREAD PLANKS
- FASTENING TIMBER PIECES
- 25MM TIMBER STRIPS FOR HANDRAIL

- ZN/AL ROOFING SHEET
- 75MM X 75MM TIMBER REEPERS
- STEEL SUPPORTING V STRUT
- FIRE SPRINKLER SYSTEM
- 150MM X 300MM WALL PLATE
- 150MM WIDE COPPER GUTTER
- 75MM X 200MM TIMBER REEPERS
- 100MM X 300MM TIMBER RAFTER
- STEEL CONNECTORS
- 100MM X 300MM TIMBER PROP

- FIXED GLASS PANEL
- TIMBER LOUVERED PIVOT WINDOW
- TIMBER DESIGNER SEATING
- 50MM X 100MM TIMBER RAFTERS
- POLYCARBONATE SHEET
- 150MM TK INSULATED TIMBER WALL
- CONCRETE COLUMN BASE
- 100MM TK RUBBLE POINTSTONE FINISH



**SECTION B** 1:50  
 A timber stand-alone building with a double height space, allowing people to experience functions below