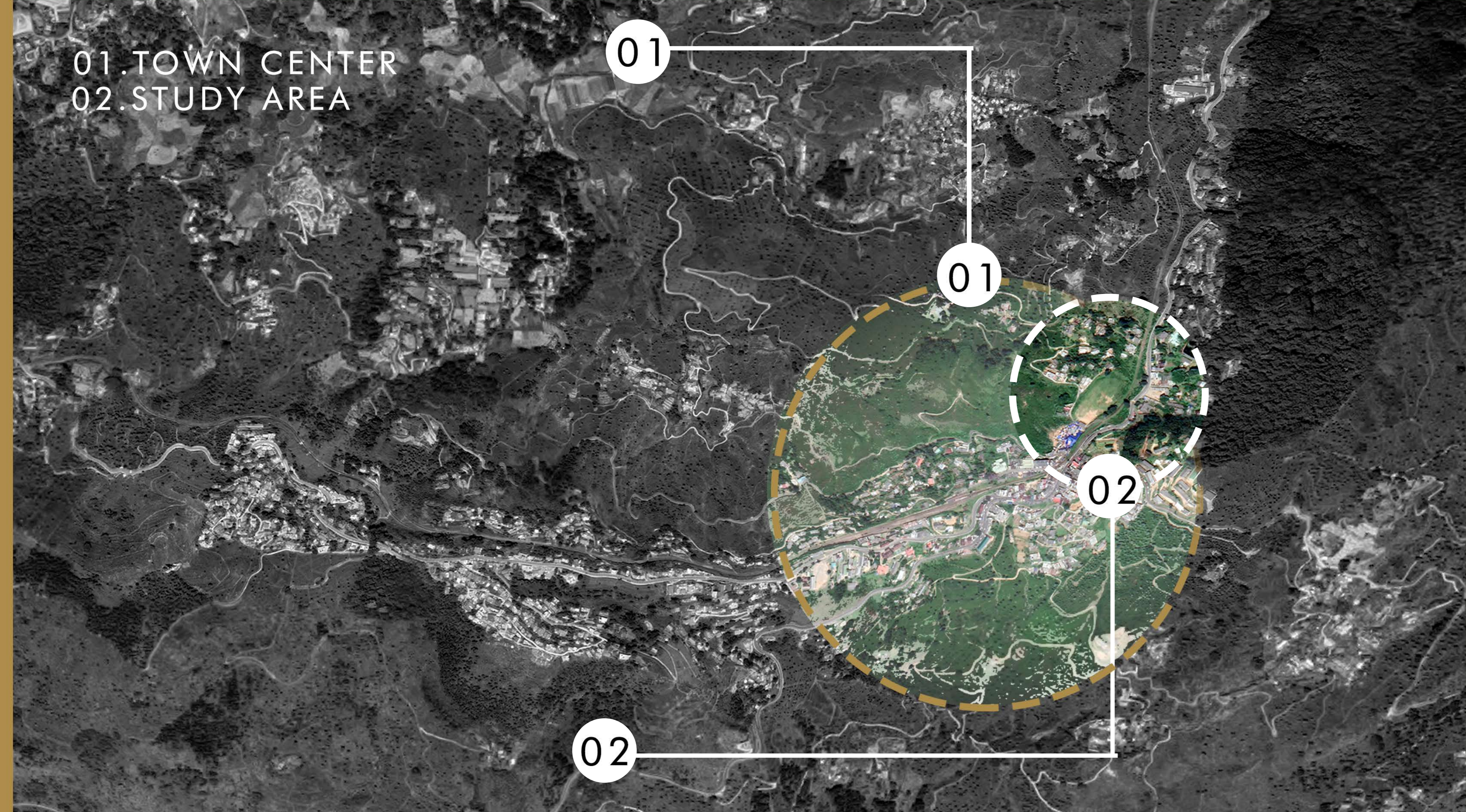


CONTEXT

1:1000



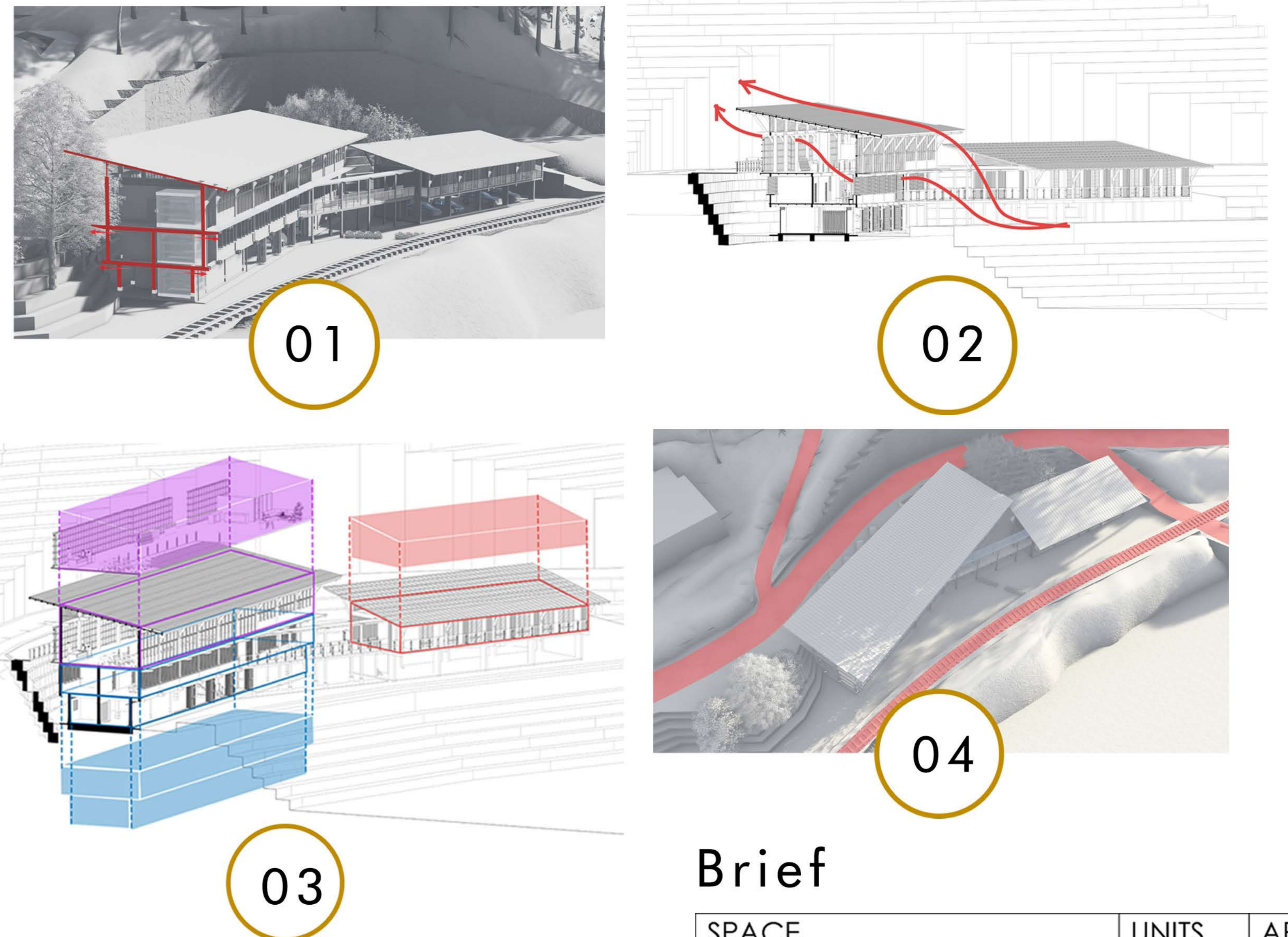
Site Justification

Haputale - Availability of raw material in the locality, with areas specially assigned for harvesting trees for timber. The site being a potential site in the entrance zone to Haputale which is a travel transit for many areas.

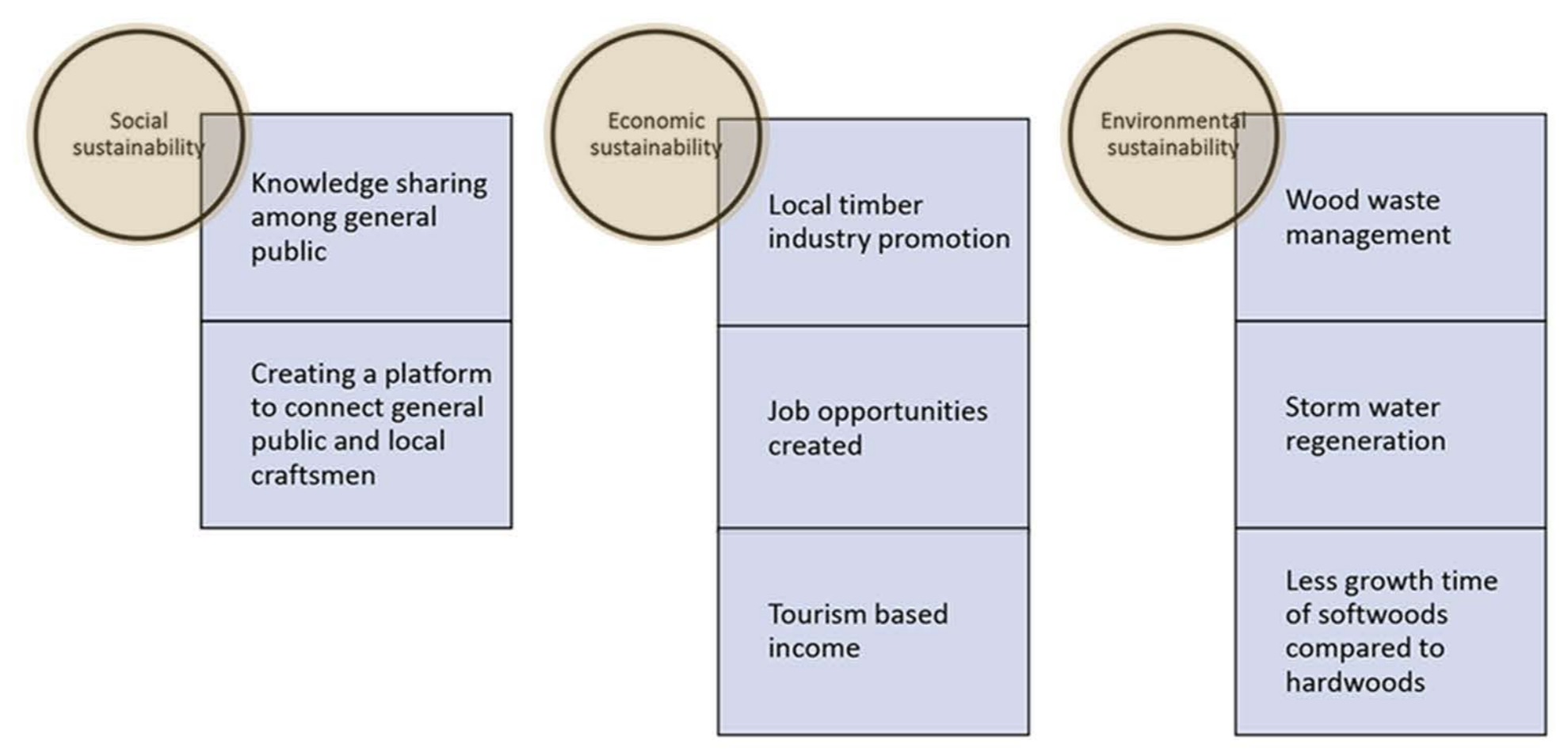


Design Idea Generation

Exposing timber structures, joineries and detailing by the building itself and creating a platform for local craftsmen to engage and transfer knowledge with modern technology which will allow them to participate in the construction process and also share their knowledge with the general public.



Architecture as a live educational spot



Brief

SPACE	UNITS	AREA (SQ.M.)
ENTRANCE	1	16
RECEPTION	1	16
GALLERY	1	60
CAFETERIA	1	45
CRAFTS SALES UNIT	1	16
WOOD CRAFTS/ WORKSHOP	1	60
LABORATORY	2	40
WRITING AREA	1	20
EXPERT CONSULTATION UNIT	1	20
LIBRARY	1	75
WASHROOMS	3	27
HEAVY MACHINERY UNIT	1	60
PAPER AND PULP UNIT	1	25
LECTURE ROOM	1	100
STORAGE	1	70
GENERATOR ROOM	1	6
LIVING ROOM	1	50
BEDROOMS AND TOILET	3	45
KITCHEN	1	40
TOTAL		800