

Transportation Terminal Dlouhá Míle

Jan Stuchlík - Martin Sýkorský

Goal was to create a place which connects to the city. To design space, which is attractive for both passing passengers and locals from the neighbourhood. Diversity of functions and clean organized design of transportation types helps keeping even such a crowded busy space human.

The urban concept derives from the creation of a new pathway for pedestrians and cyclists, which through a bridge connects eastern residential area with shopping centre Šestka. This urban axis defines the main communication line and enables us to create symmetrical composition of functions.

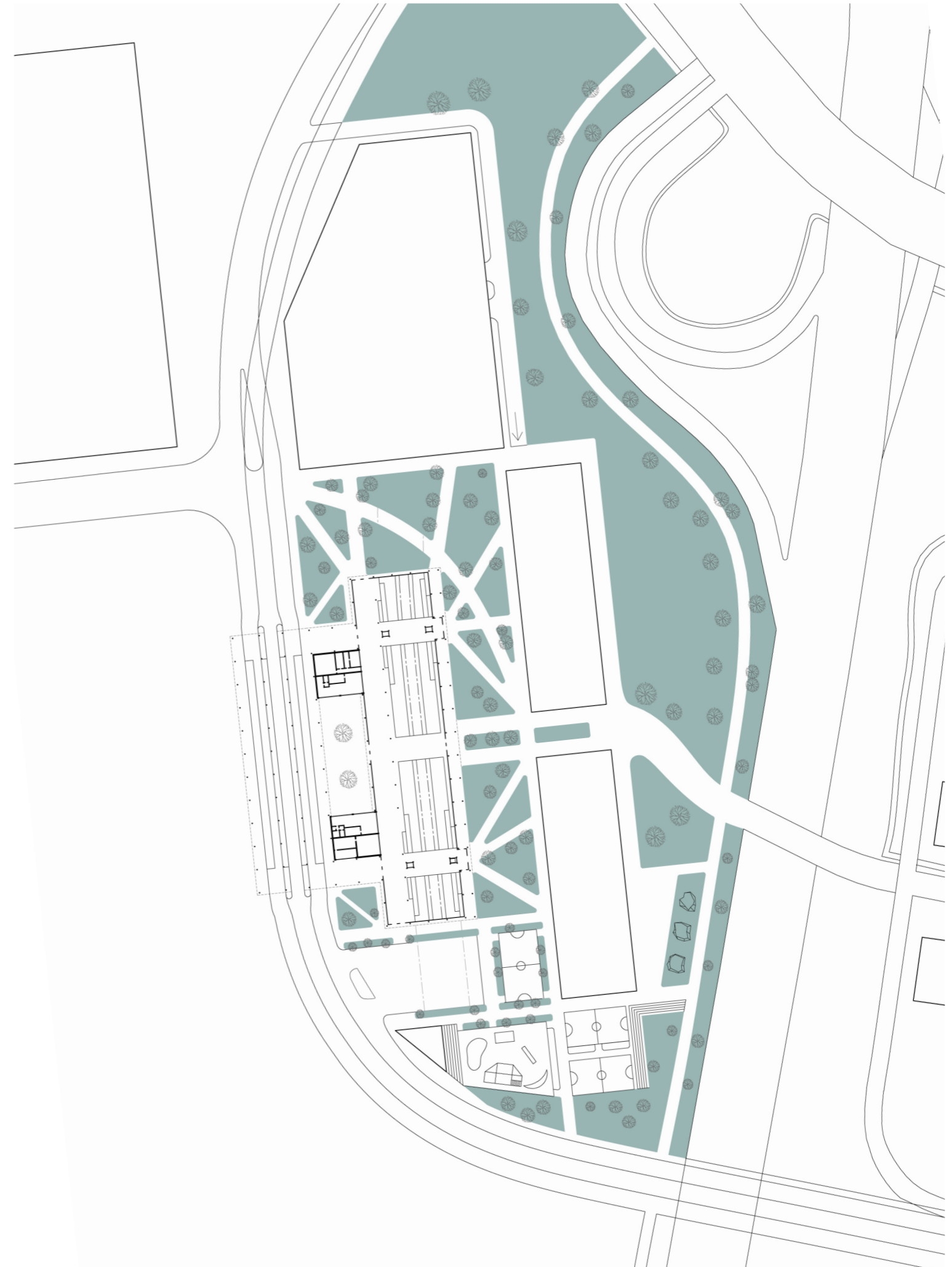
On the east we design a green zone that helps absorb noise from the nearby highway. Perpendicular to the axis here is a bicycle path that travels from south to north, giving the area to the south a potential for further development. The next function consists of two 5 storey multifunctional buildings, which allow for administrative and commercial usage, with active ground floor. In the southern building we also design a sport centre, which offers a wide range of sport activity to nearby residents.

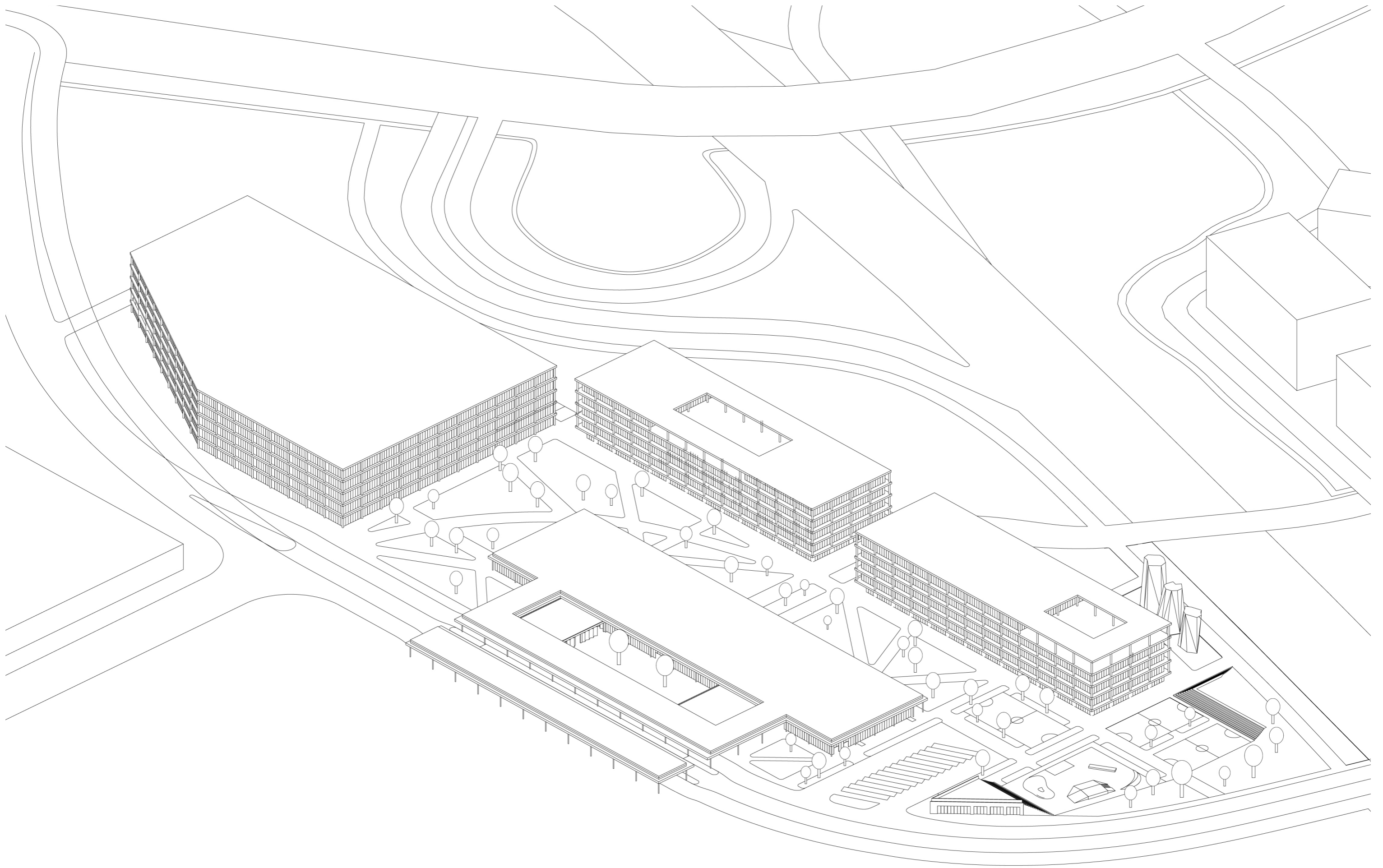
In the underground parking beneath the buildings and in the northern parking house, there is a total of 2213 car capacity, which will serve the Park and Ride function in connection to the railway a tram station. Automobile transit is limited to the northern part of the area. Only busses and trams do pass through the terminal, which creates a much more favourable and safe experience for all the terminal passengers.

In the calm zone, where the highway noise is shielded by multifunctional buildings we designed a park, which creates a space for relaxation and rest in shade, or on the 3D sculpted terrain. In the southern part there are more multifunctional sports fields, skatepark and climbing walls.

The main part of this project is the

transport terminal itself. Simple orientation, sustainability and function were the main criteria. The floorplan division consists of 3 function straps, which are perpendicular to the 3 main communication axes. The platform is underground with the space above open, parallel promenade connected with commercial spaces. Two coffee shops are also open to the central atrium. The tram and bus platforms are concentrated around the main road, which does not require busses to drive of the communication. The service building for bus drivers is on the south and functions as a tribune to the skatepark. The station uses mainly materials, which are durable and sustainable both physically and mentally. The heaviness of the underground spaces of the platform interacts in contrast of the airy and light space of the ground floor, with a subtle light facade. The roof is green, which helps with water retention.





Green roof- water retention- cooling

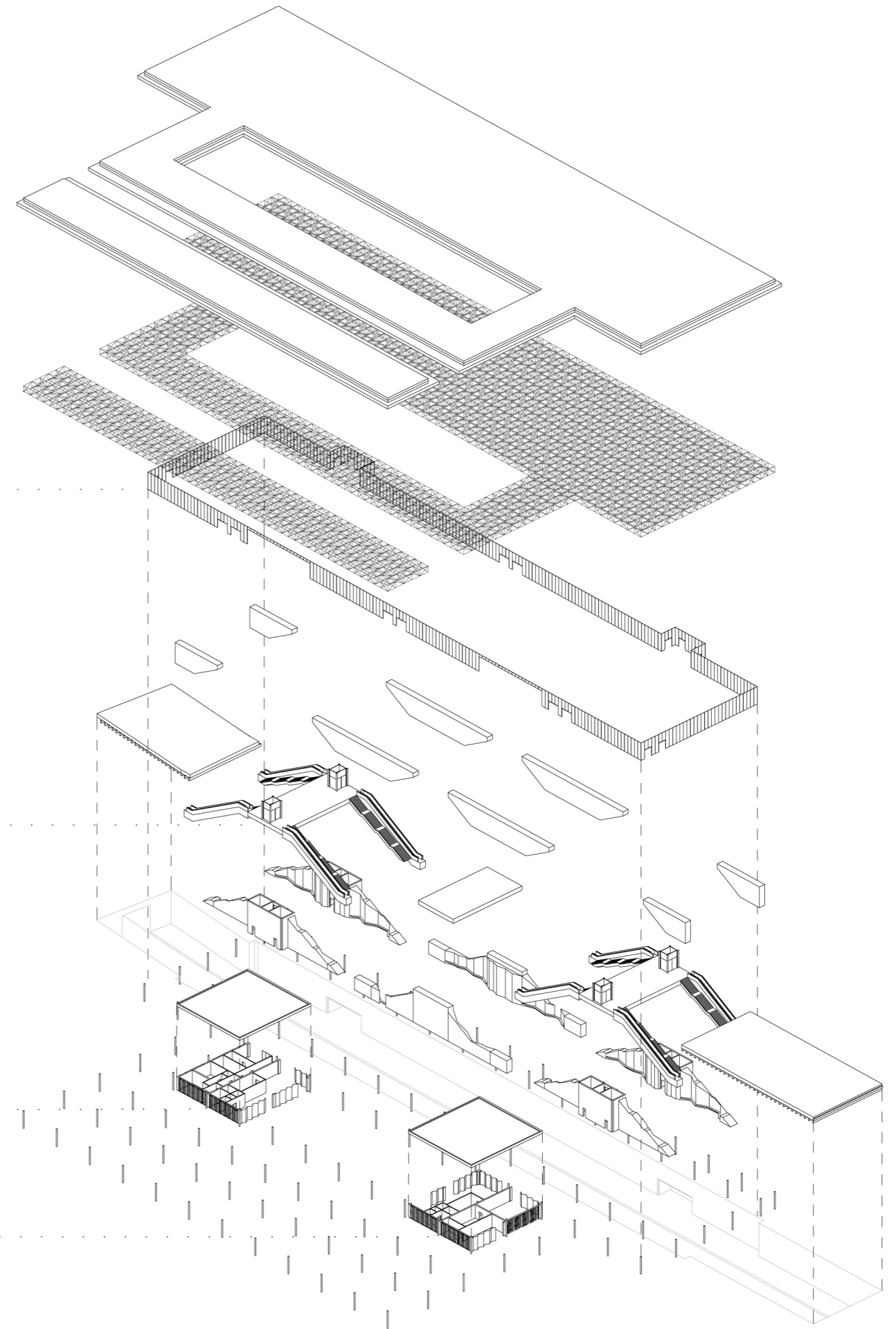
Roof lattice structure

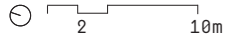
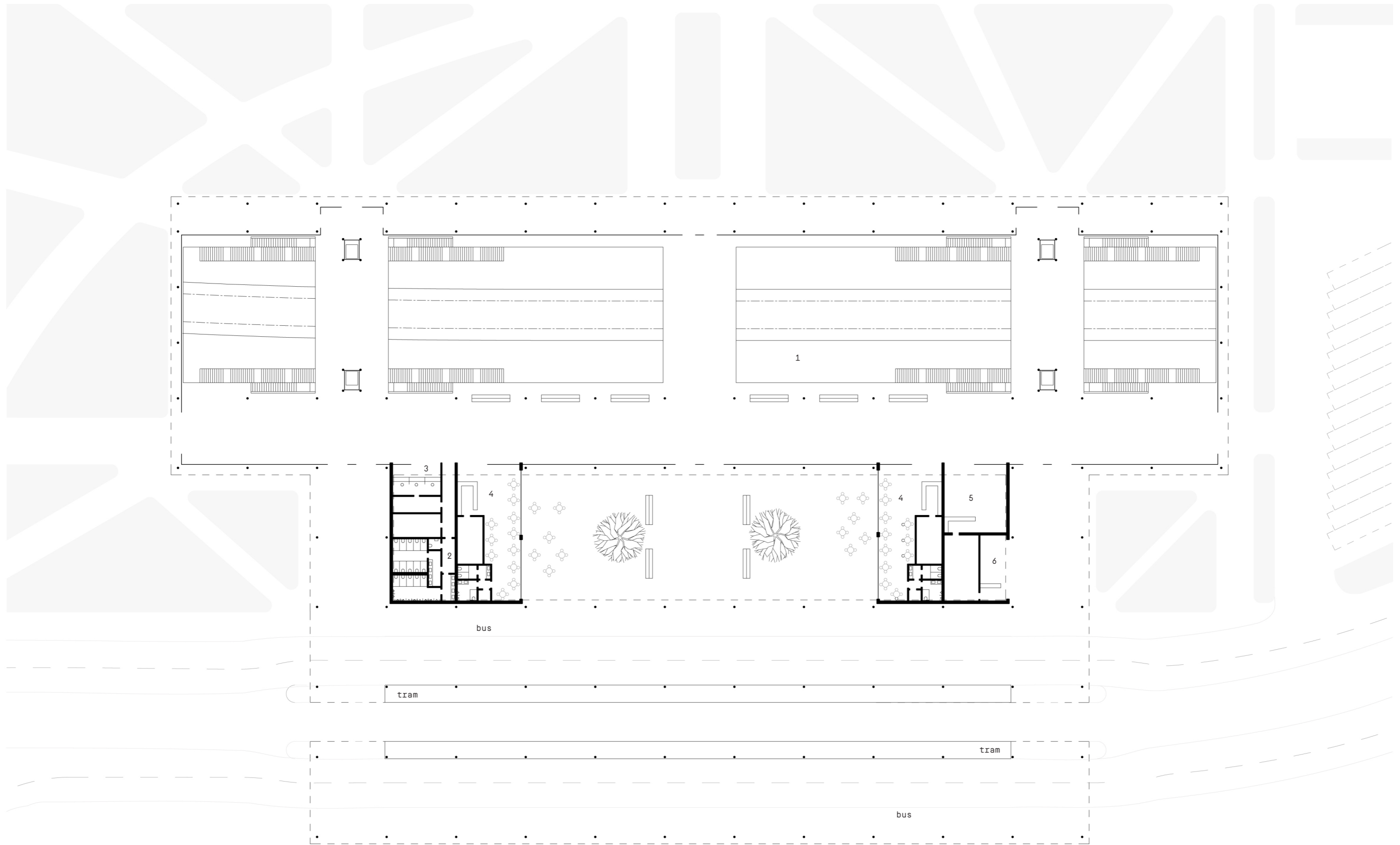
Light glass facade

stairs, escalators

Ticket sales, bathrooms, gastro

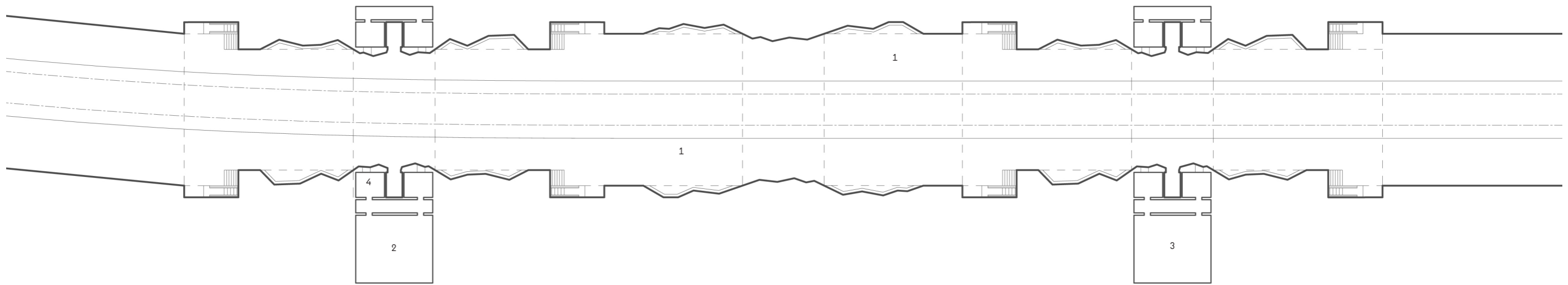
Comercial and coffee shop





Ground floor

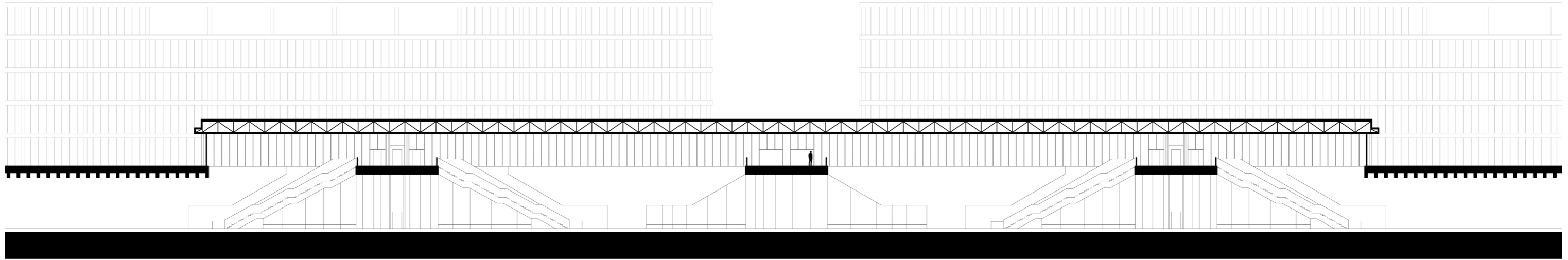
- 1 platform
- 2 bathrooms
- 3 ticket sales
- 4 gastro
- 5 comercial
- 6 grocery store



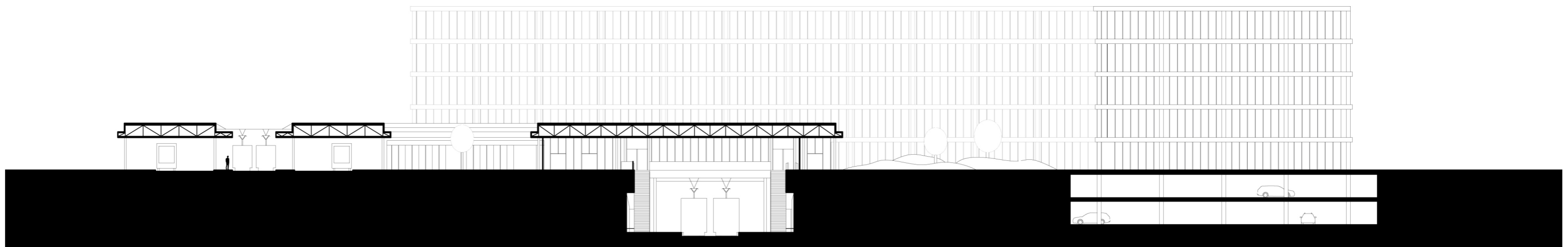
⊙ 2 10m

Underground floor

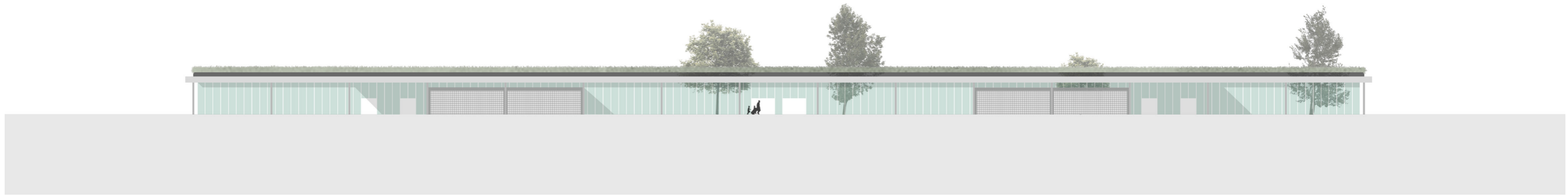
- 1 platform
- 2 utility area
- 3 clean up room
- 4 escalator maintenance



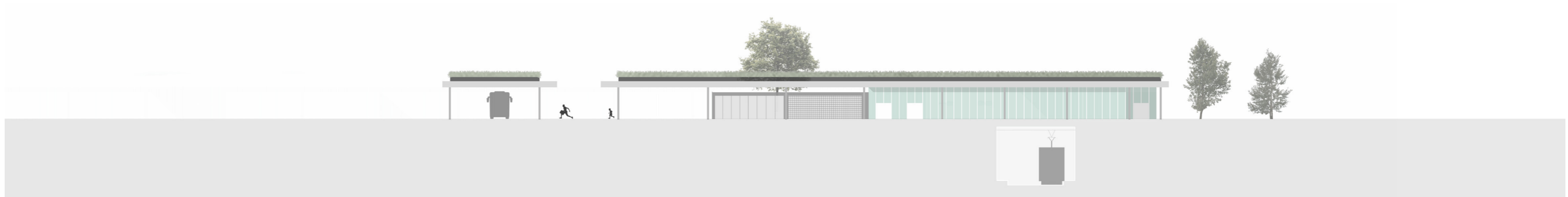
longitudinal section



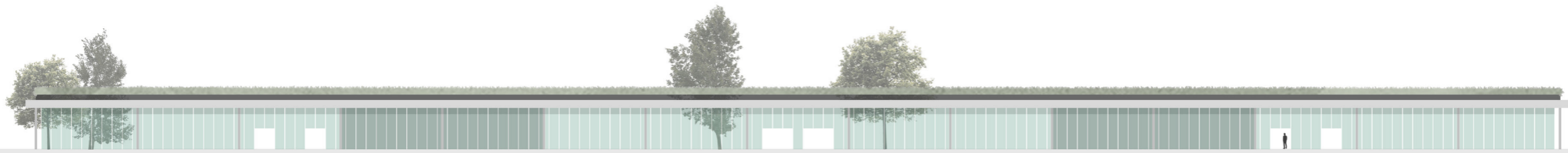
cross section



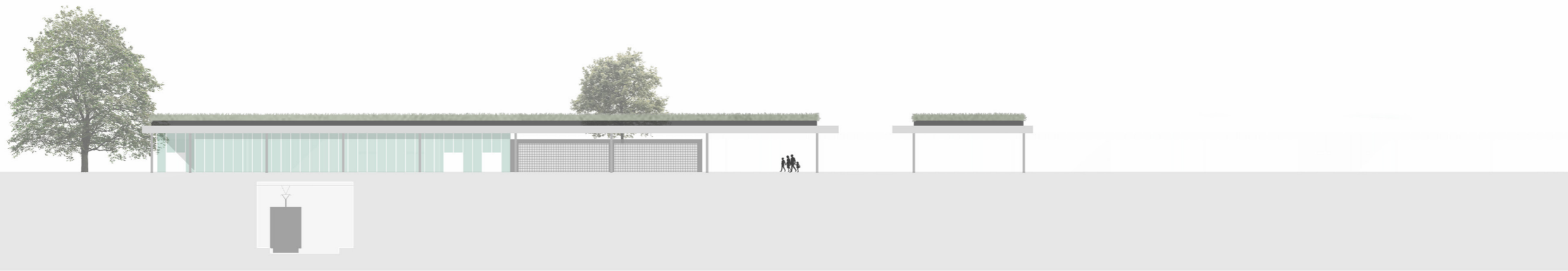
Western view



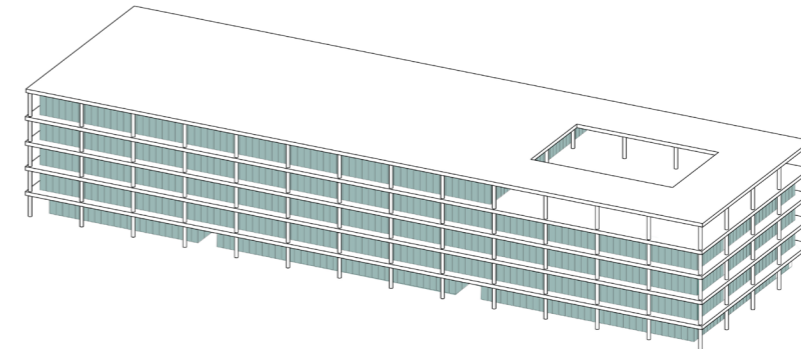
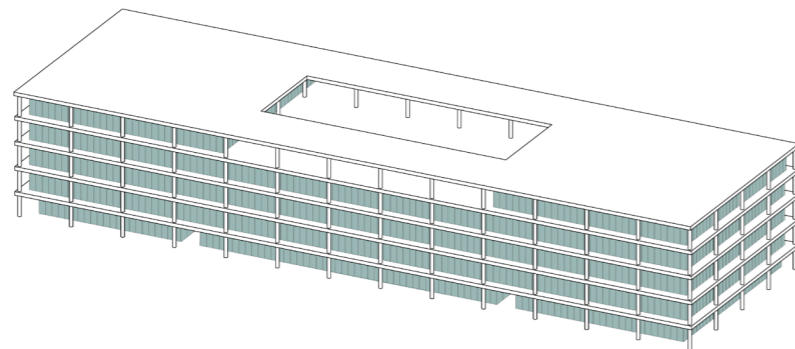
Southern view



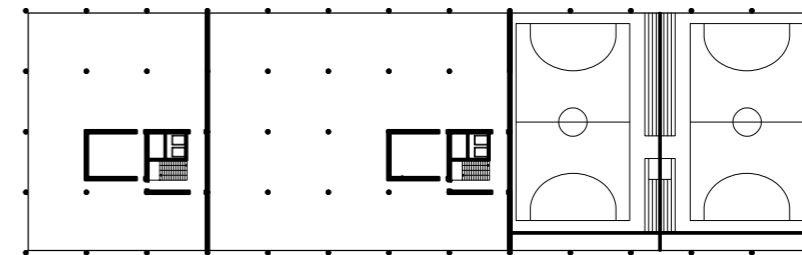
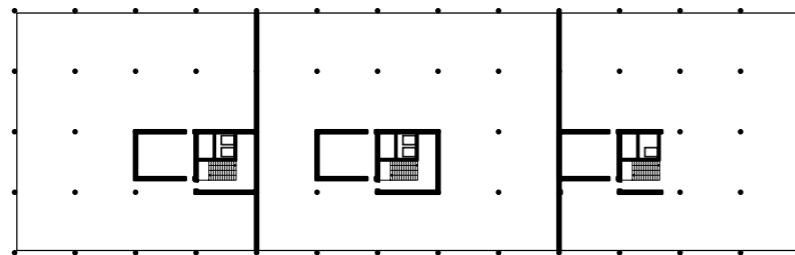
Eastern view



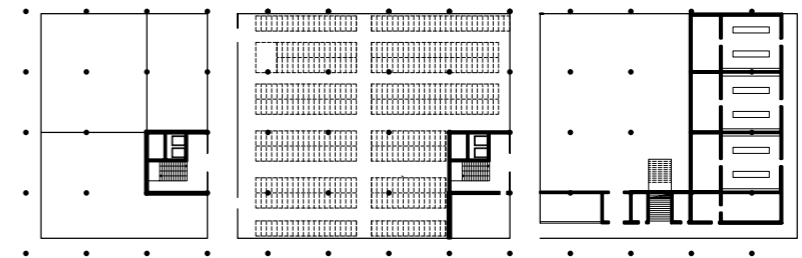
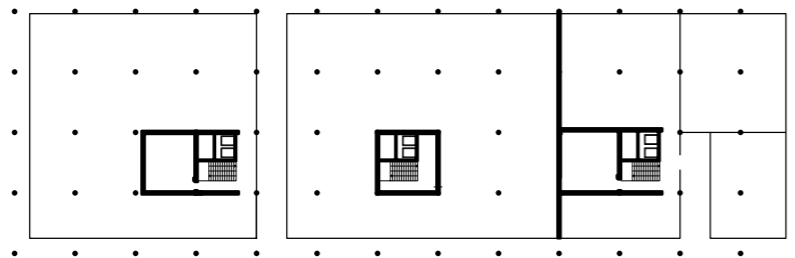
Northern view



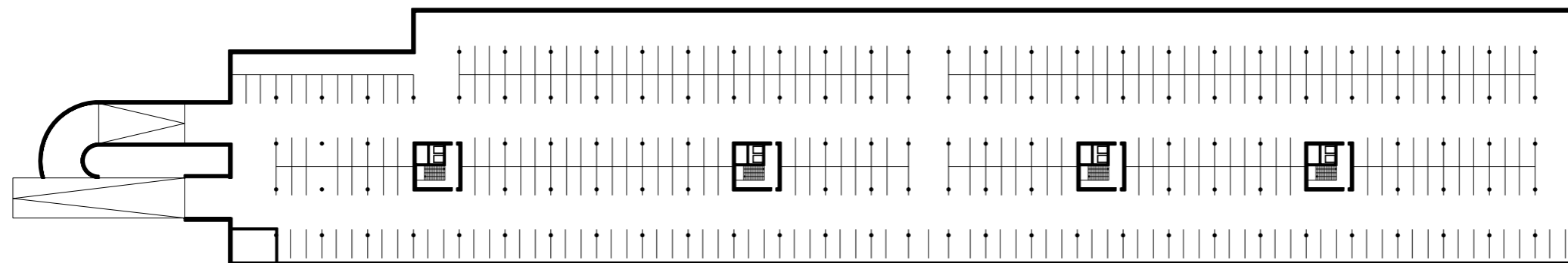
Upper floors



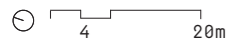
Ground floor



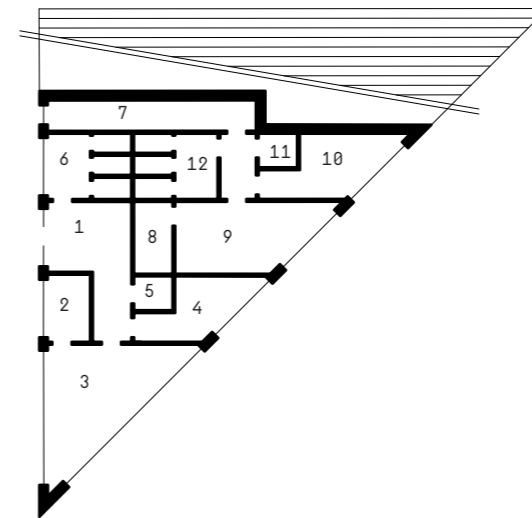
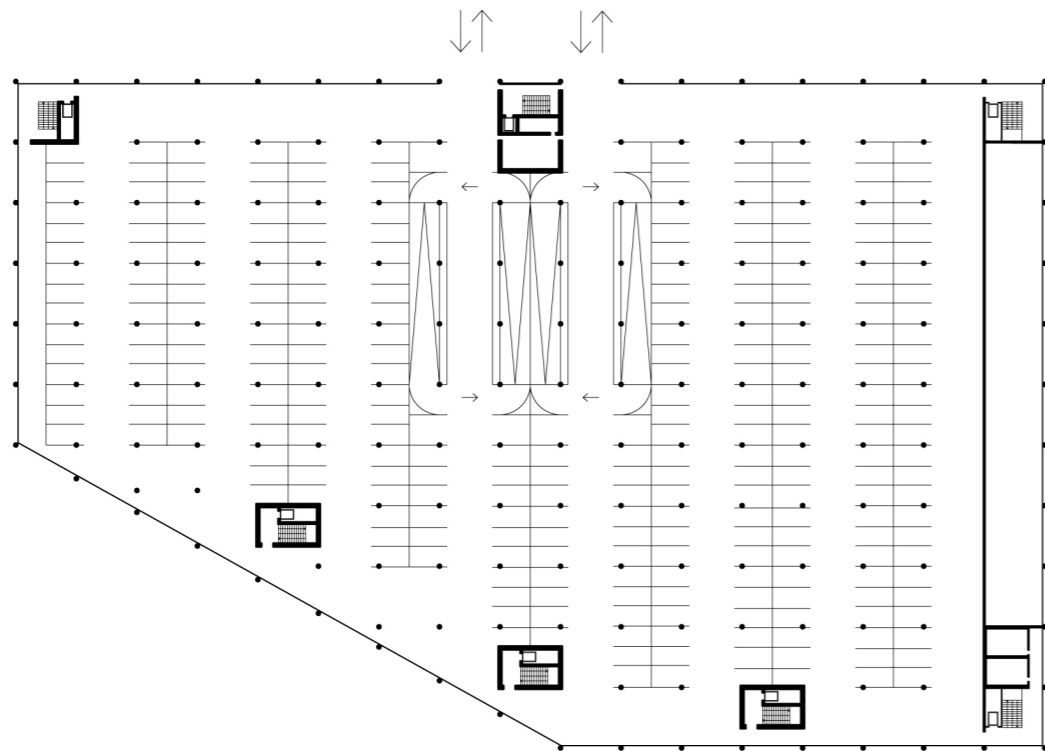
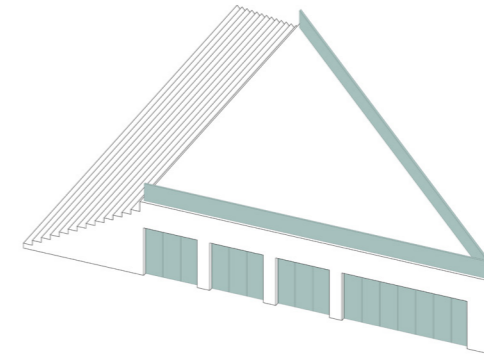
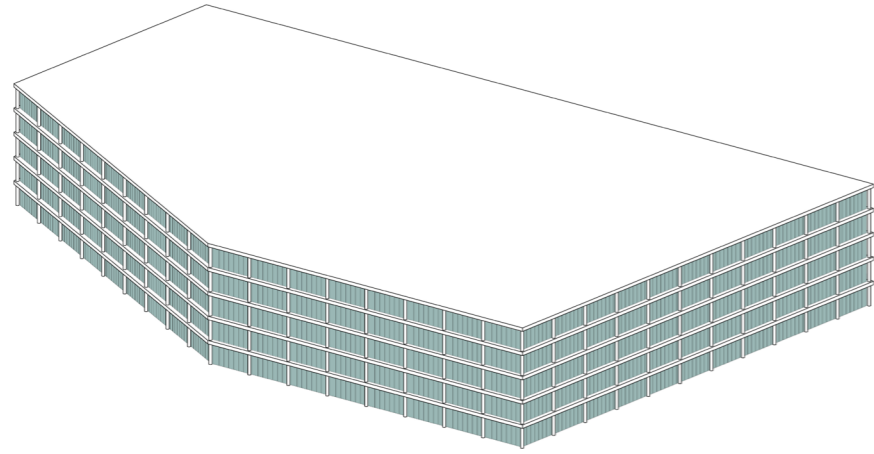
Parking for
350 bikes



Connected underground parking lots
784 parking spaces



Floorplans and axonometry of multifunctional building

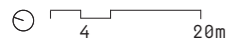


Facility for public transport

- 1 entry hall
- 2 kitchen
- 3 resting room
- 4 dispatcher
- 5 clean up

Facility for Region

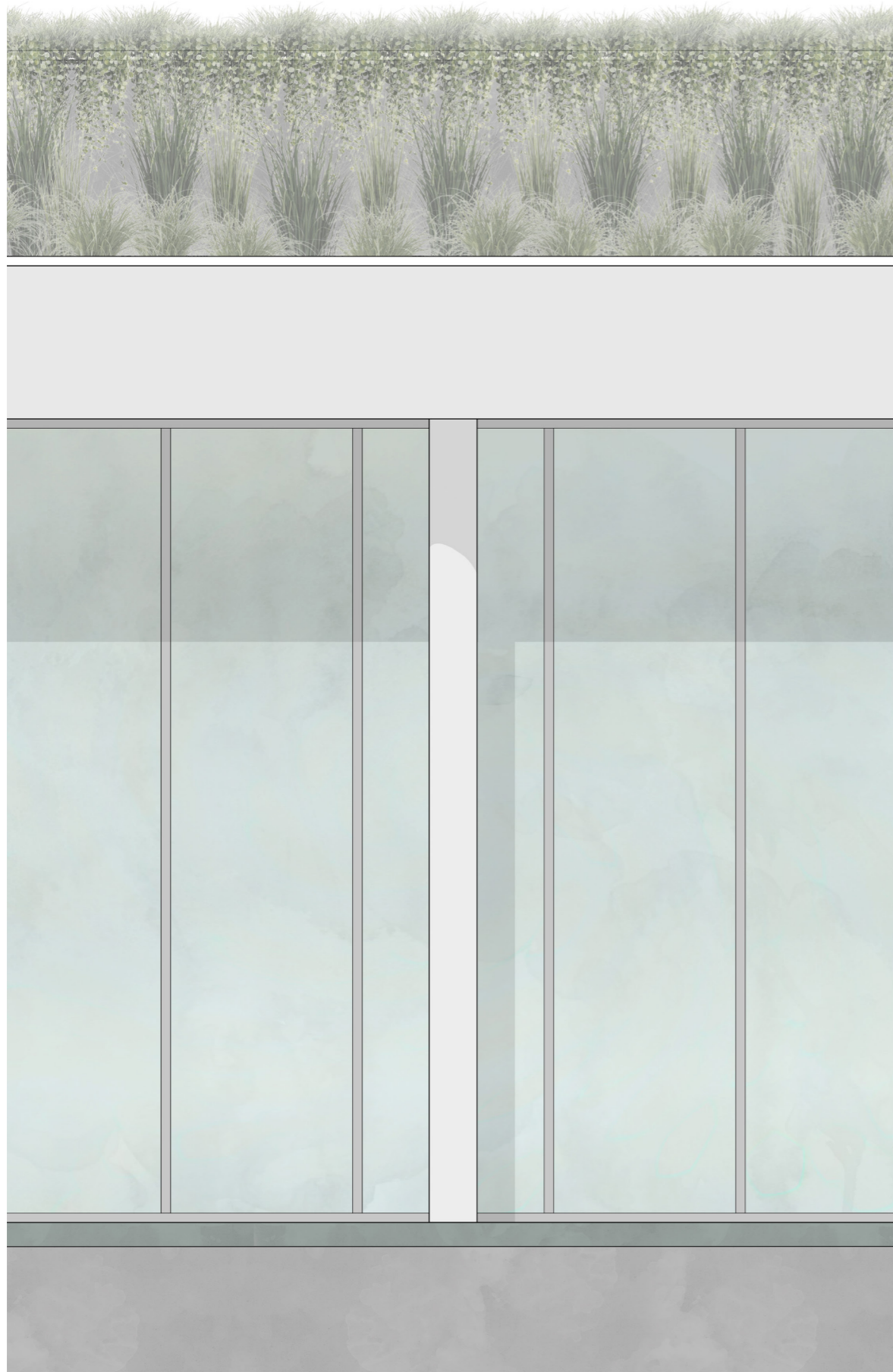
- 7 entry hall
- 8 kitchen
- 9 resting room
- 10 dispatcher
- 11 clean up
- 12 changingroom + WC



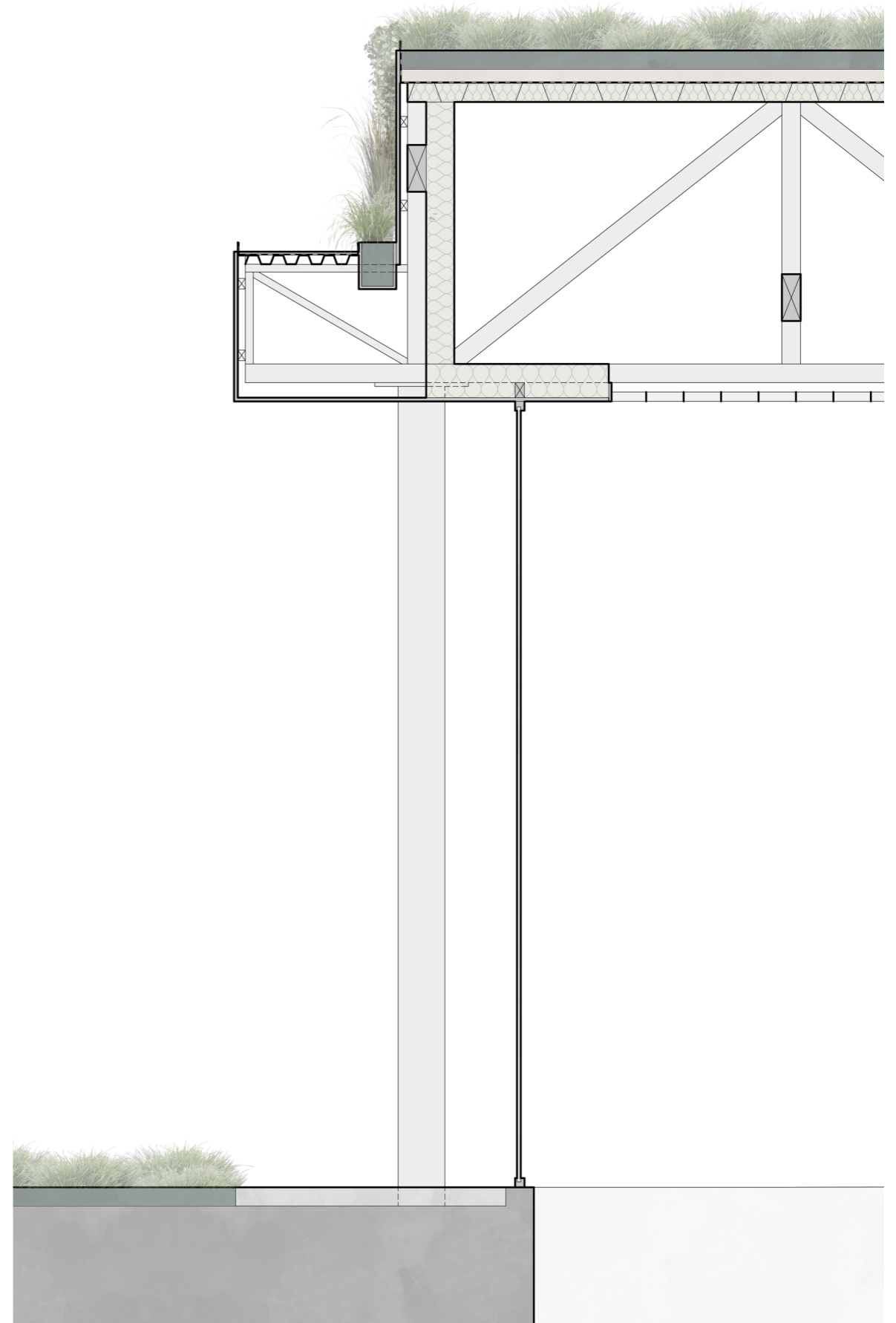
Southern parking lot - 1428 parking spaces



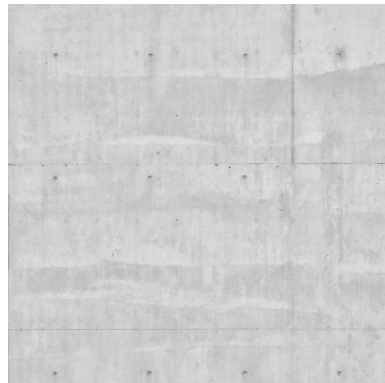
Facility for driver [Region + Public



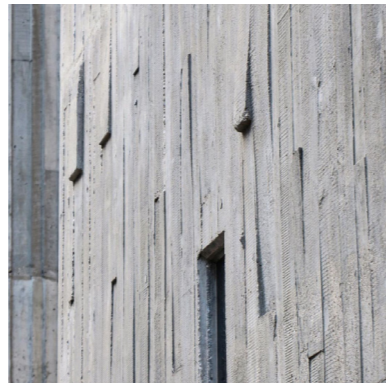
Detail of facade 1:30



Cross section of facade 1:30



Concrete in large format formwork



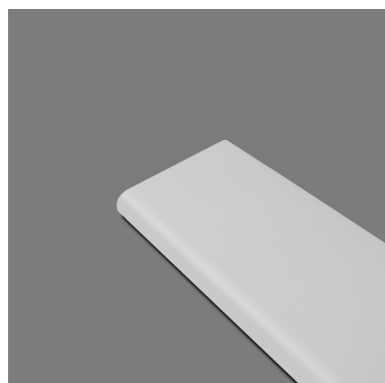
Sculpted concrete in wooden formwork



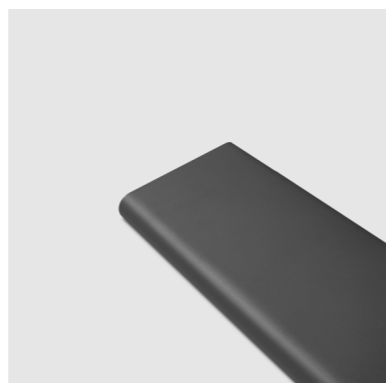
Tinted glass



Frosted glassblocks



White frosted aluminium



Dark aluminium



Light wood



Green roof