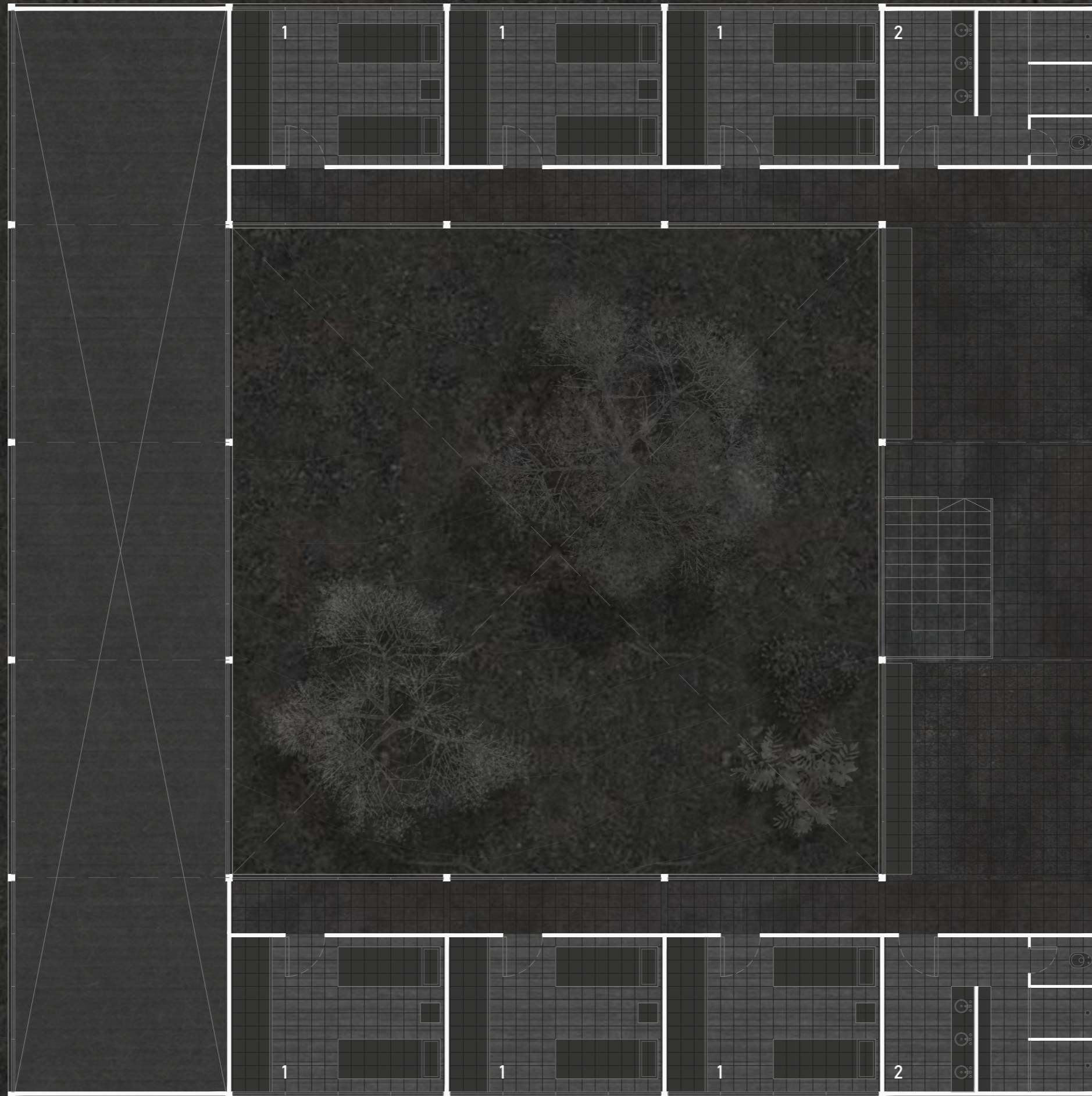


SANTA ROSA - Tourist Accommodation



1 BEDROOMS / 2 SERVICES / 3 LIVING ROOM / 4 DINING ROOM / 5 KITCHEN

SANTA ROSA - Tourist Accommodation



TOP FLOOR | 1.100

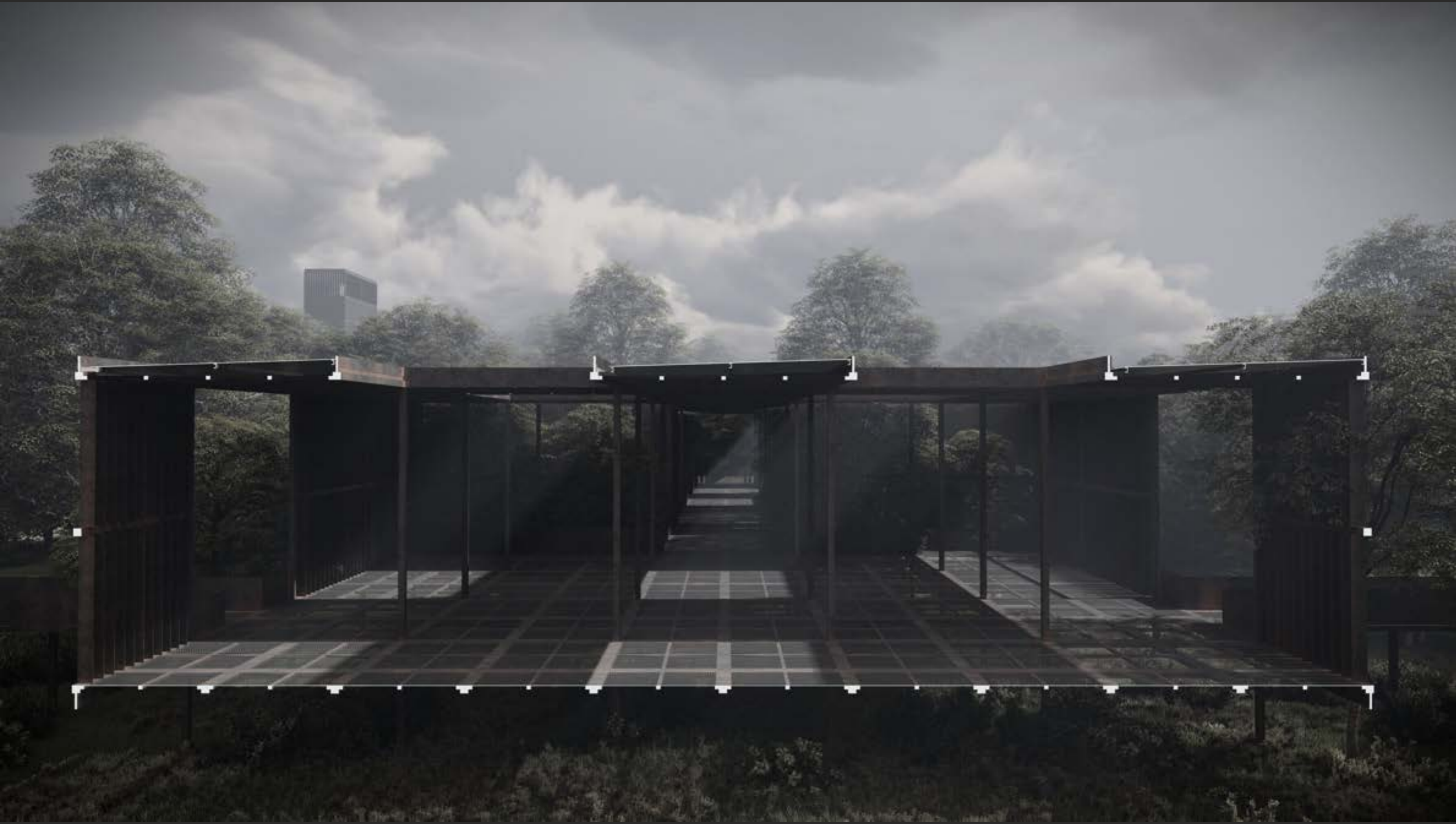
1 BEDROOMS / 2 SERVICES

SANTA ROSA - Research Center

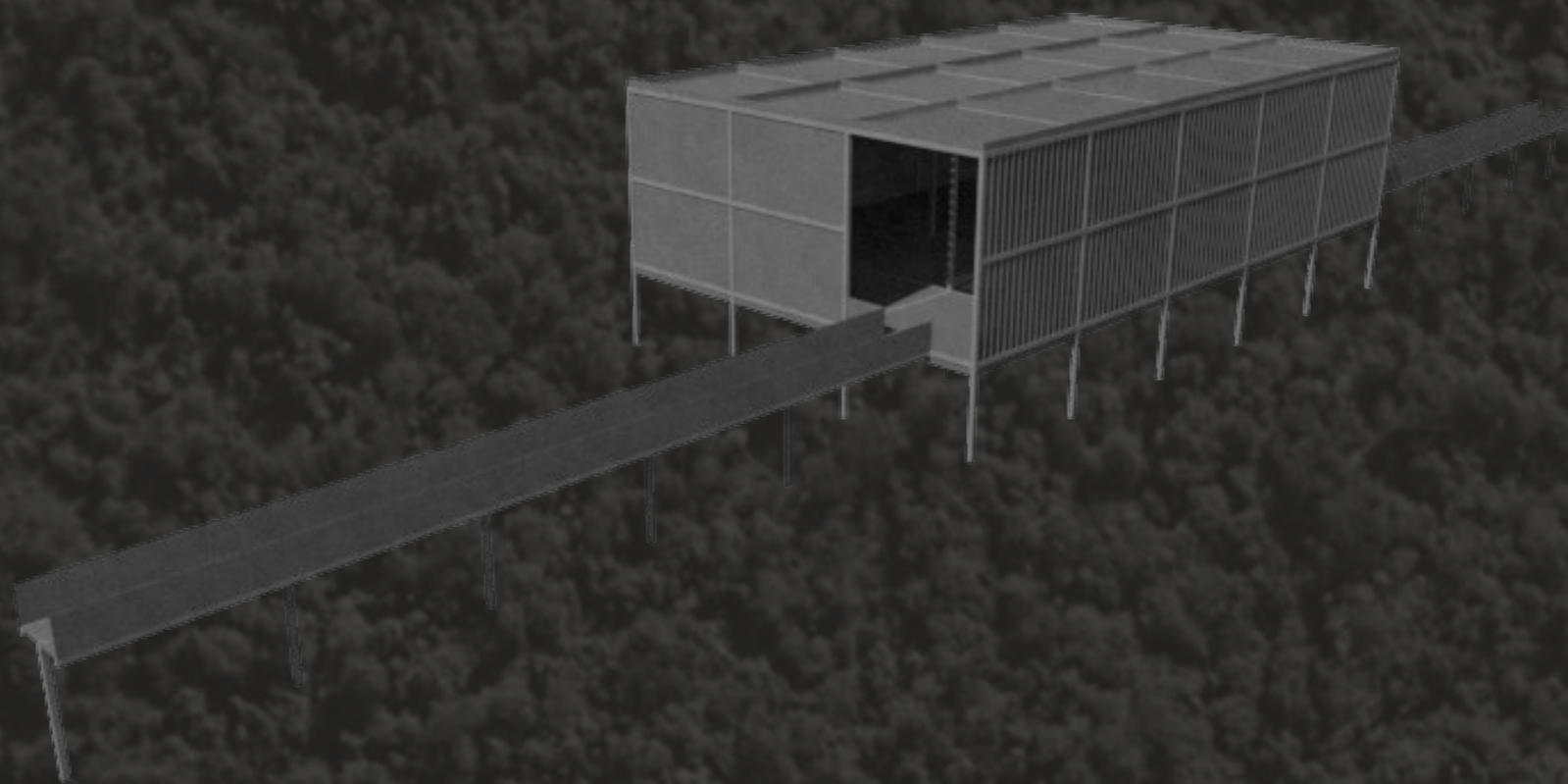


SECTION | 1.100

SANTA ROSA - Square Section



LOS CHORIZOS - Posta







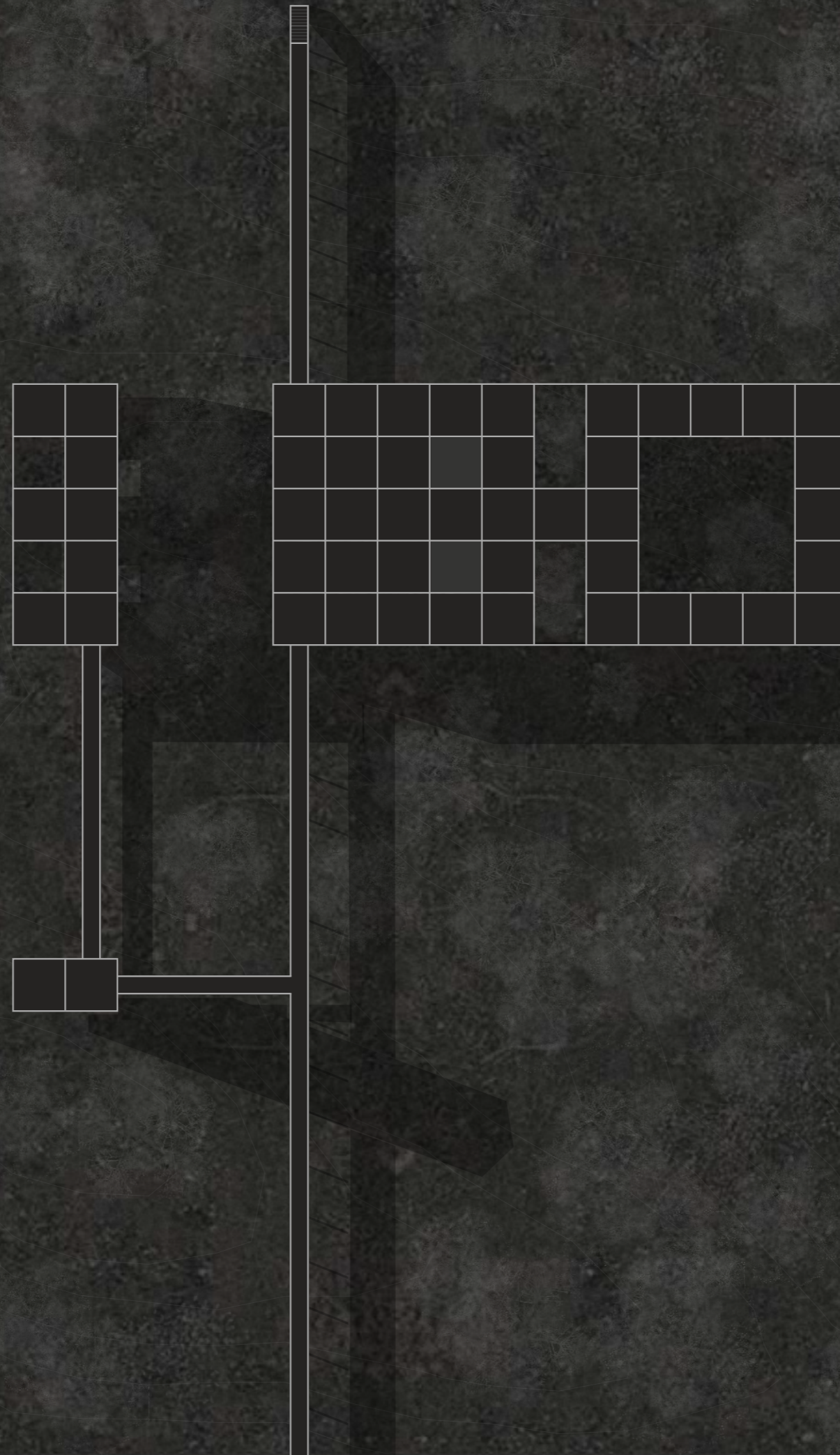


LAS PAVAS - Destacamento

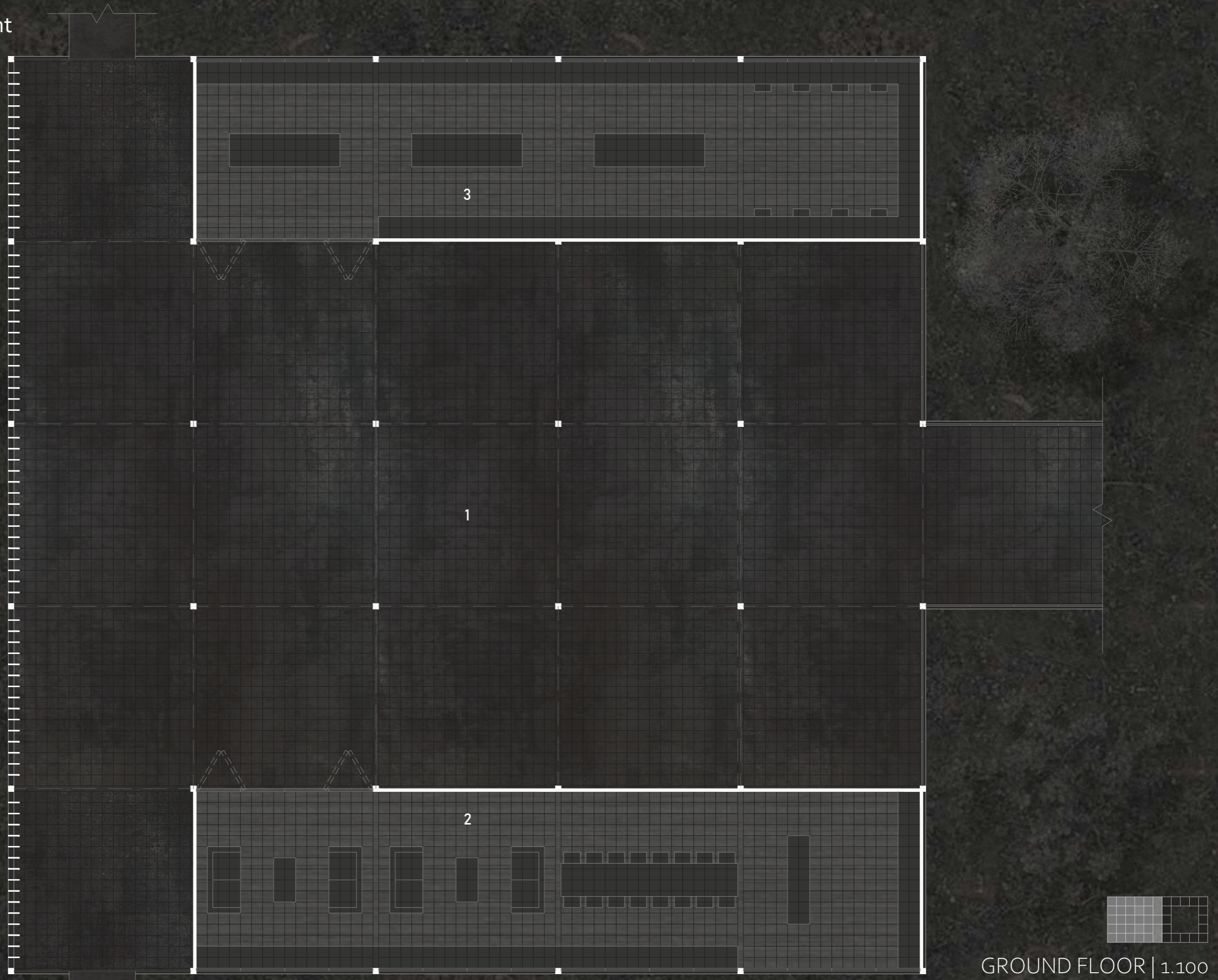


LAS PAVAS - Detachment





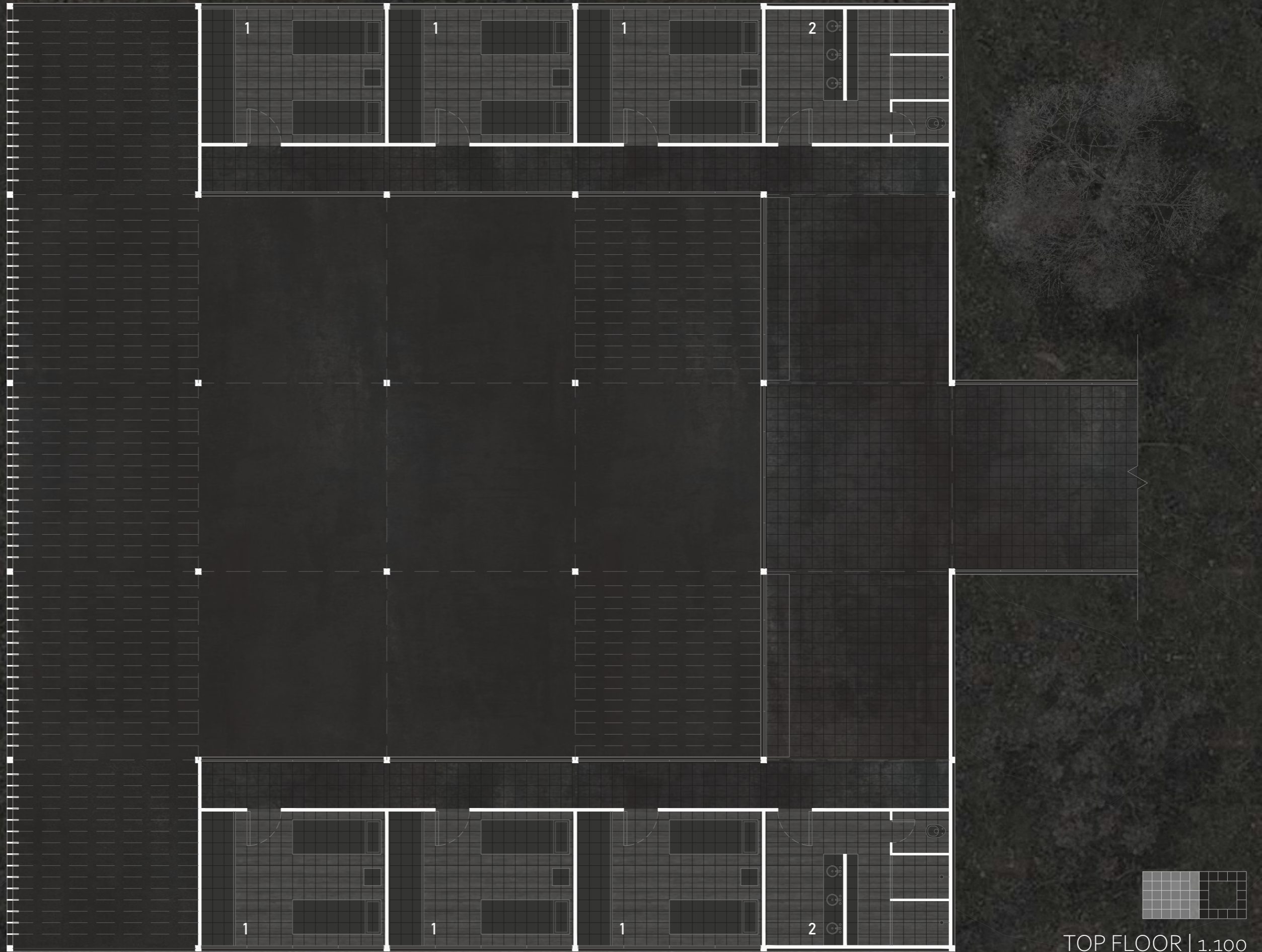
LAS PAVAS - Detachment



1 GALLERY / 2 LIVING ROOM-KITCHEN-DINING ROOM (SCIENTIFIC) / 3 RESEARCH CELL

GROUND FLOOR | 1.100

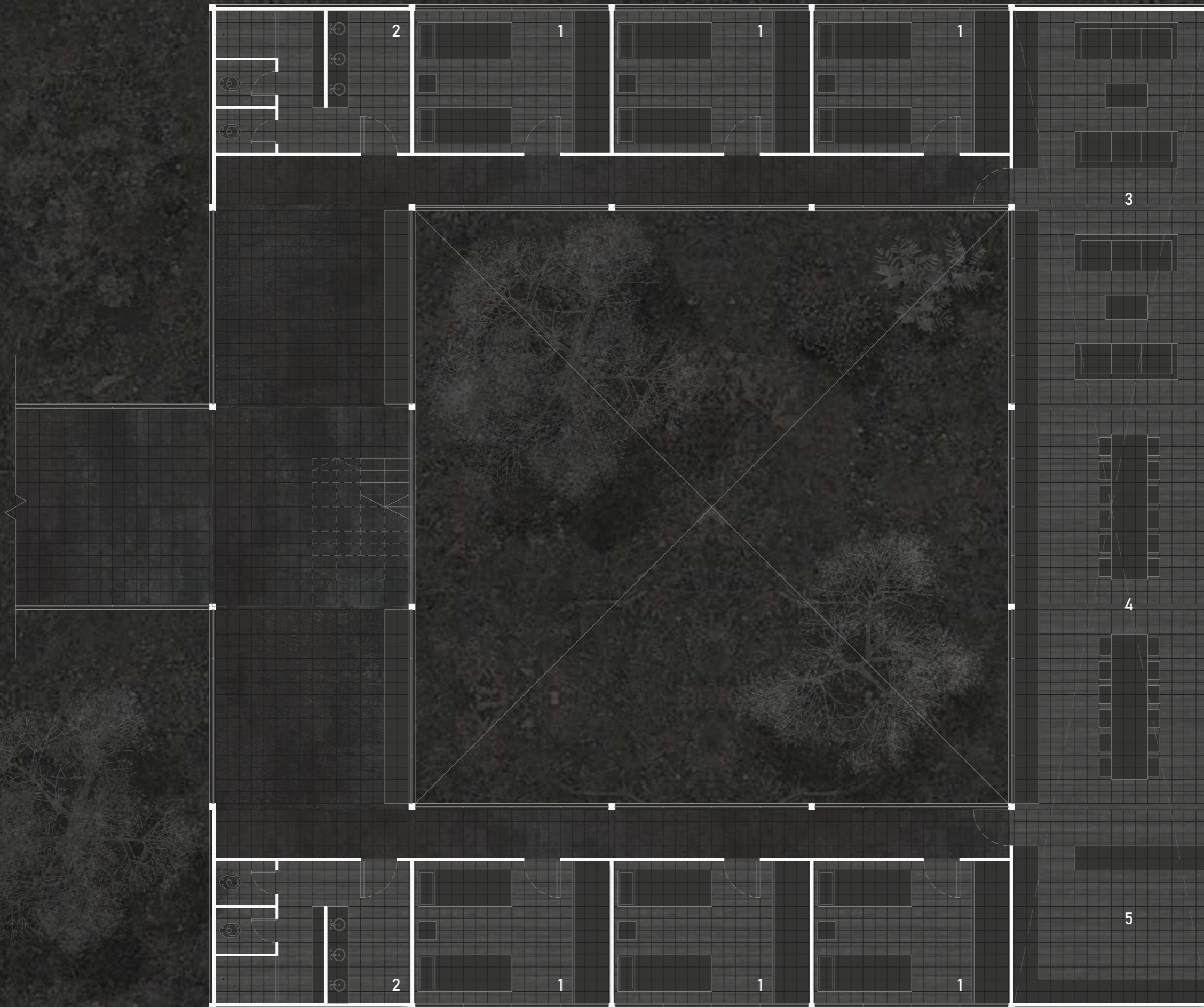
LAS PAVAS - Detachment



1 BEDROOMS (SCIENTIFIC) / 2 SERVICES

TOP FLOOR | 1.100

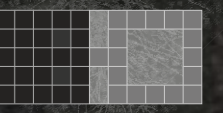
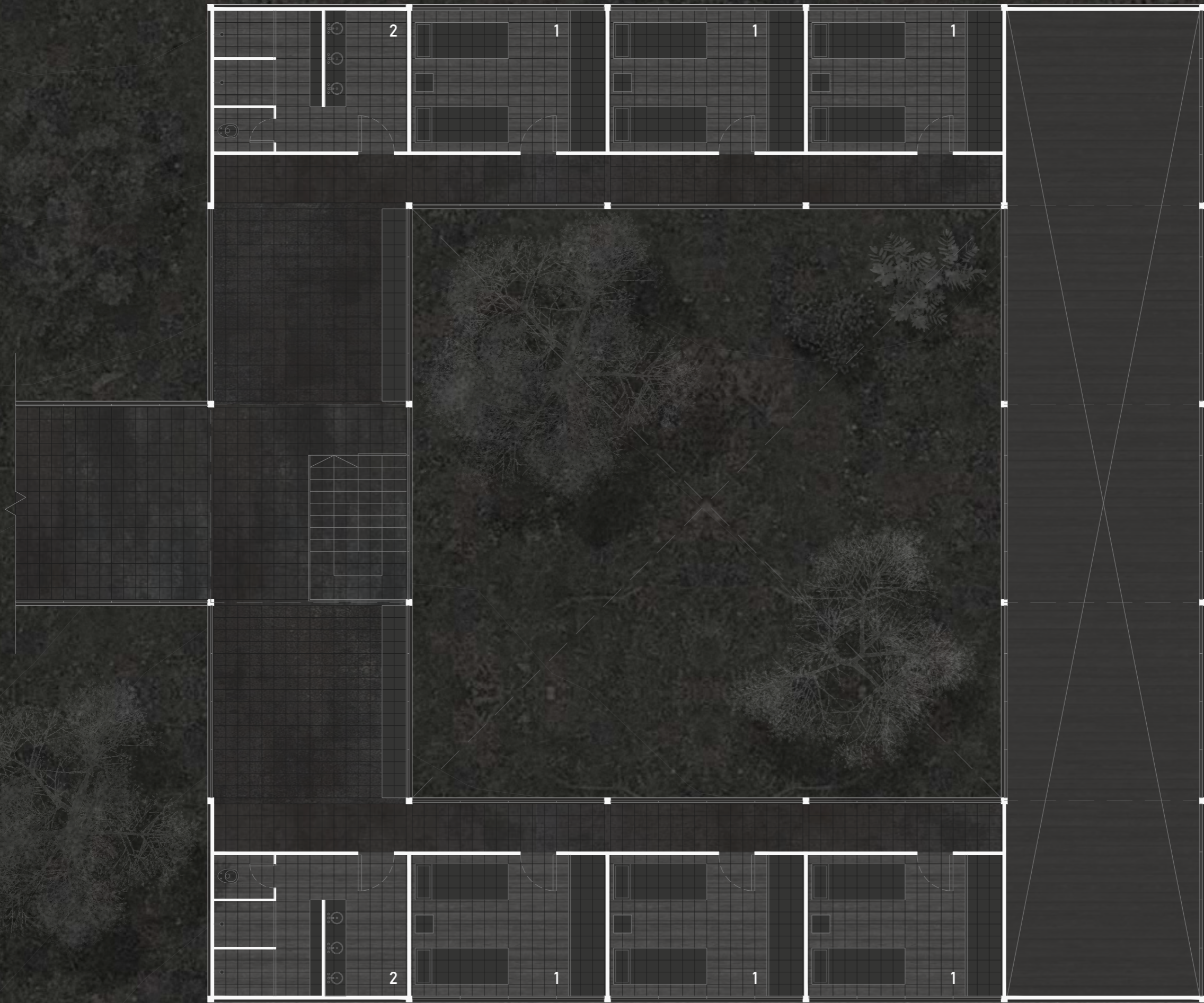
LAS PAVAS - Detachment



GROUND FLOOR | 1.100

1 BEDROOMS (TOURISTIC) / 2 SERVICES / 3 LIVING ROOM / 4 DINING ROOM / 5 KITCHEN

LAS PAVAS - Detachment



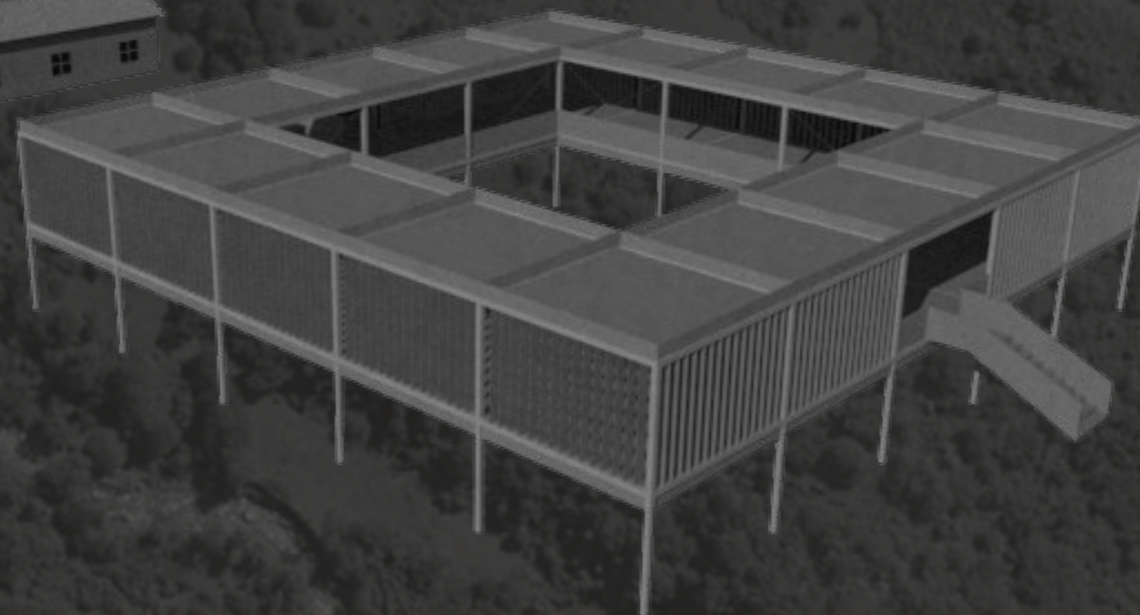
GROUND FLOOR | 1.100

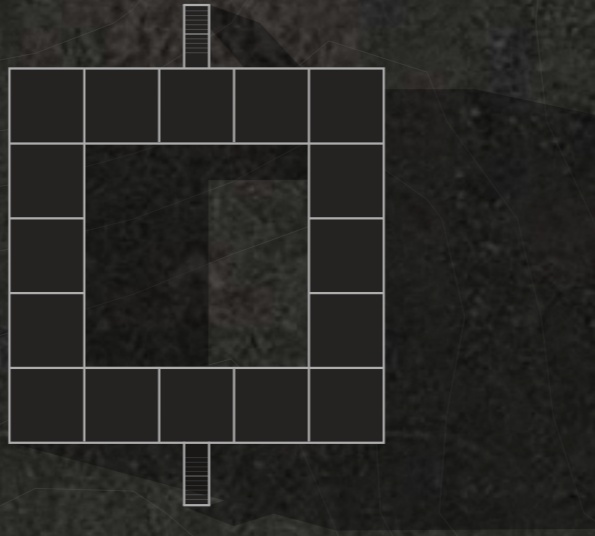
1 BEDROOMS (TOURISTIC) / 2 SERVICES

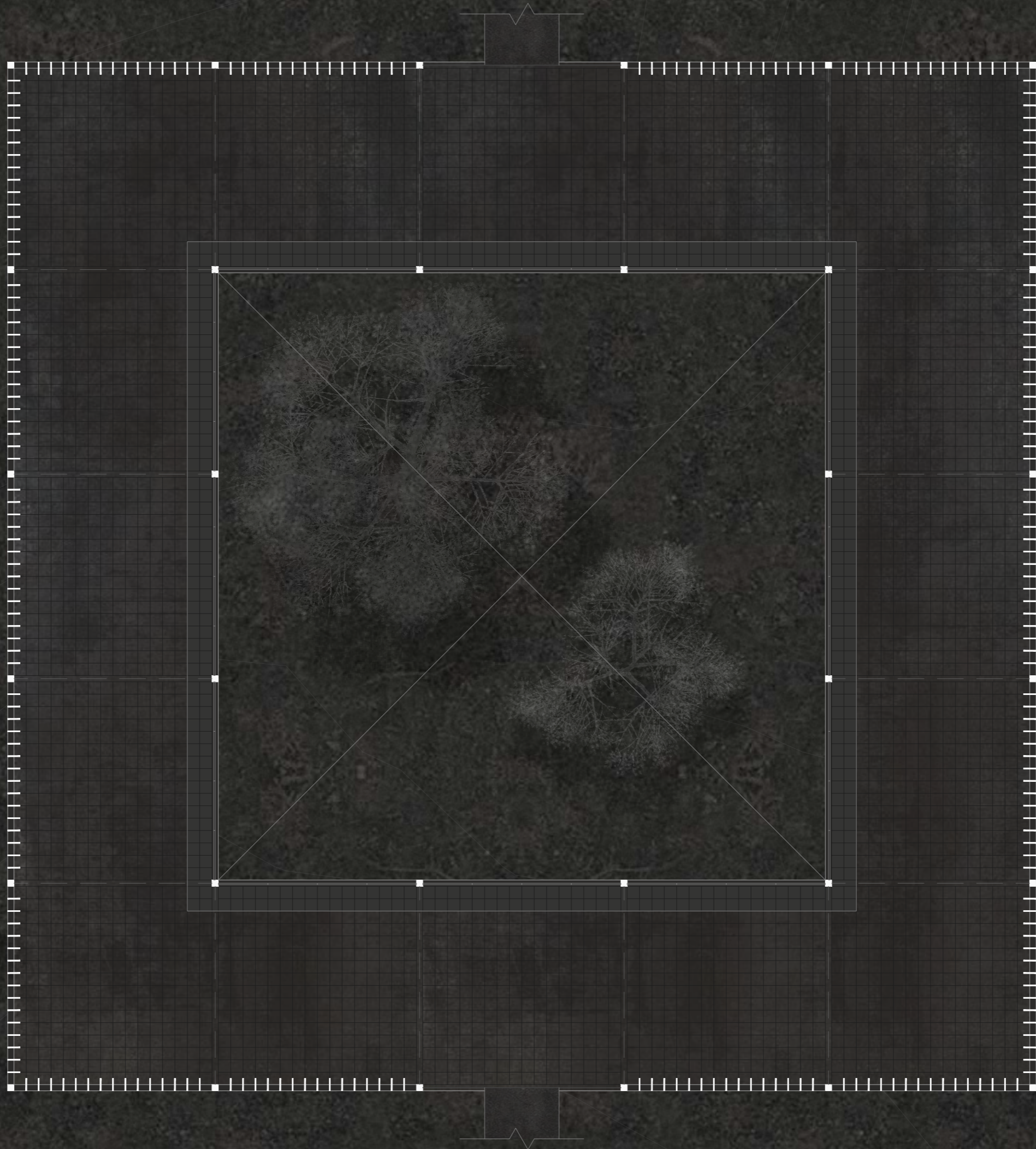
LAS PAVAS - Section



LA MESADA - Posta

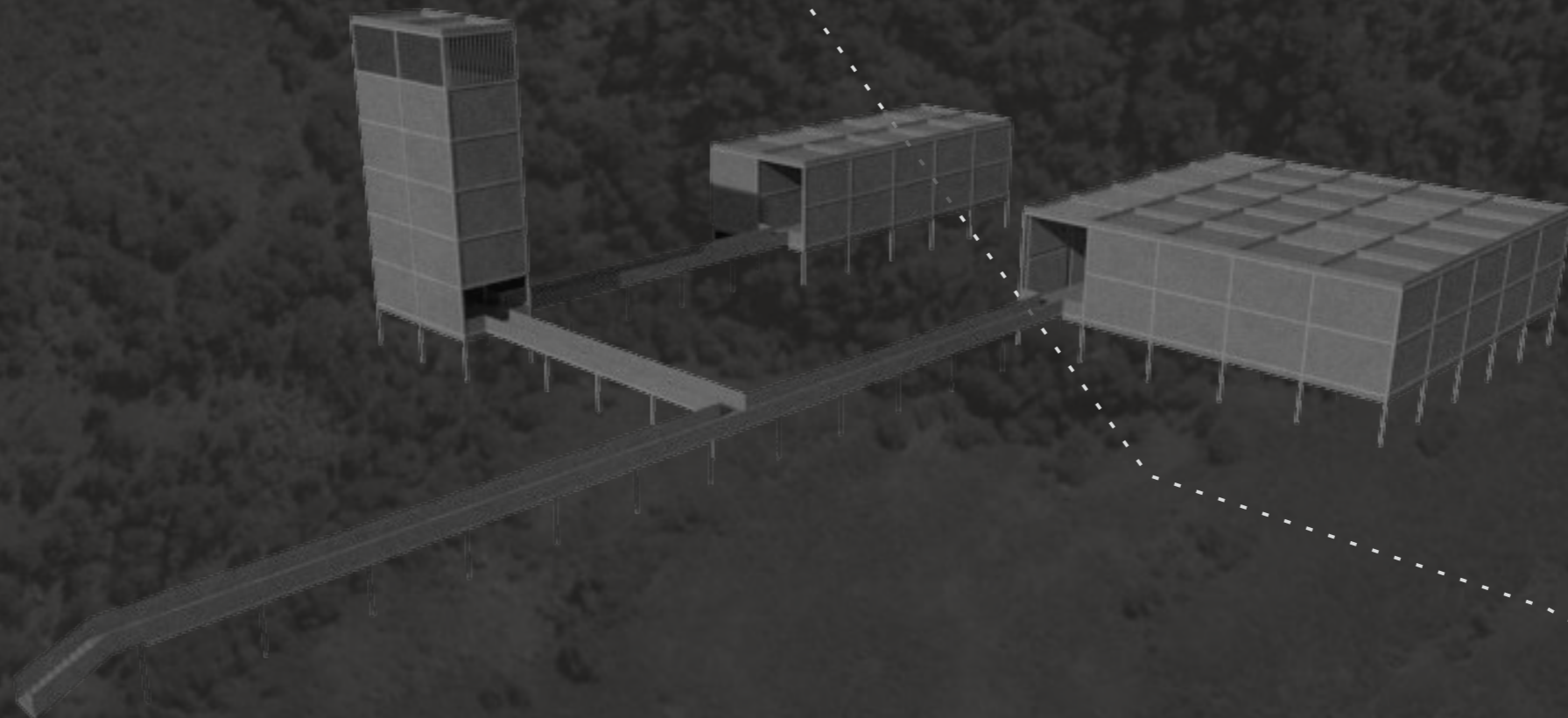
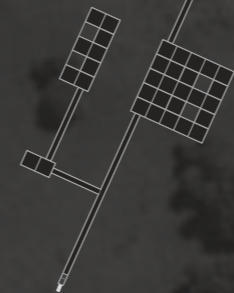








VALLE ESCONDIDO - Destacamento

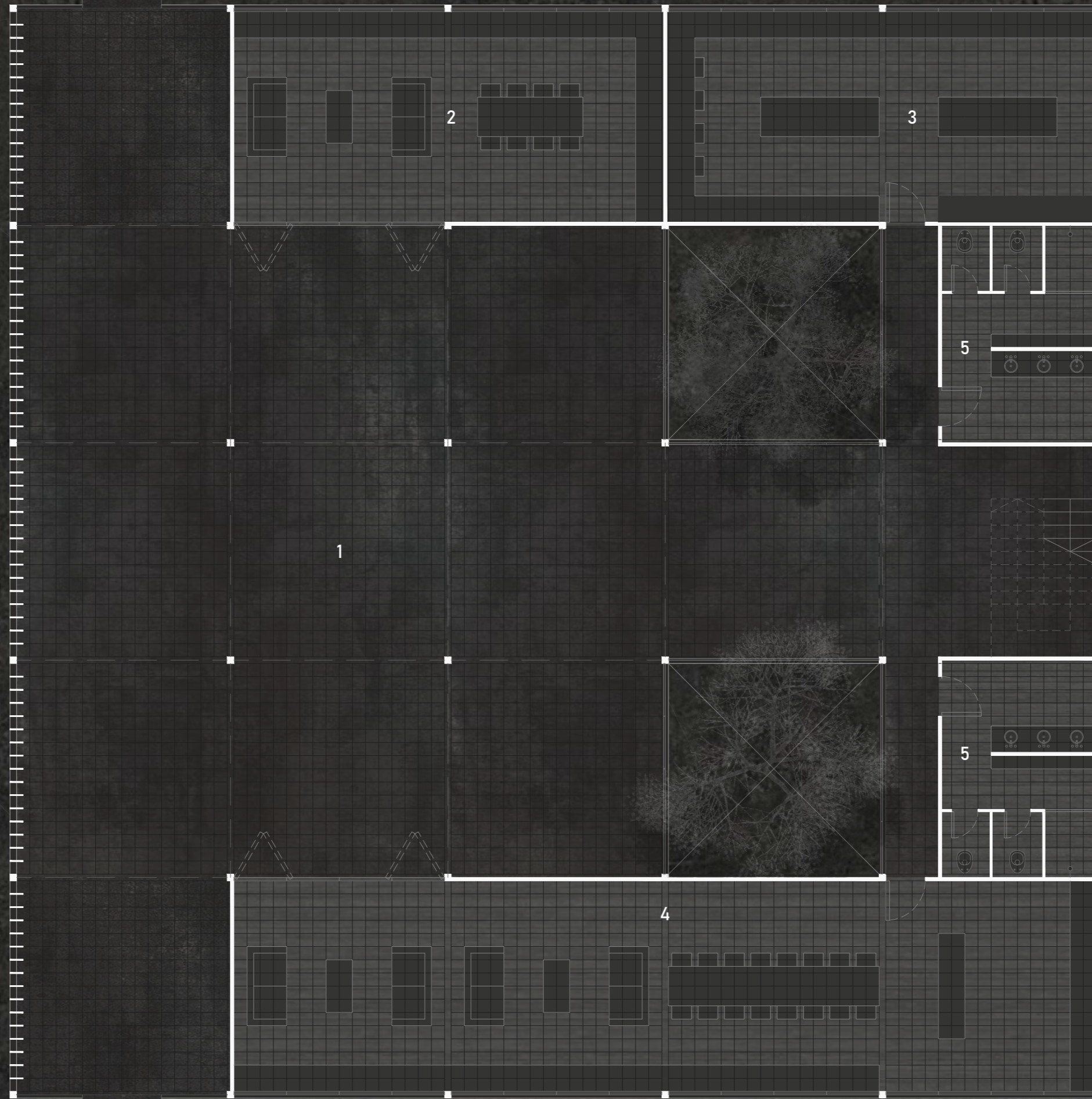




VALLE ESCONDIDO - Detachment



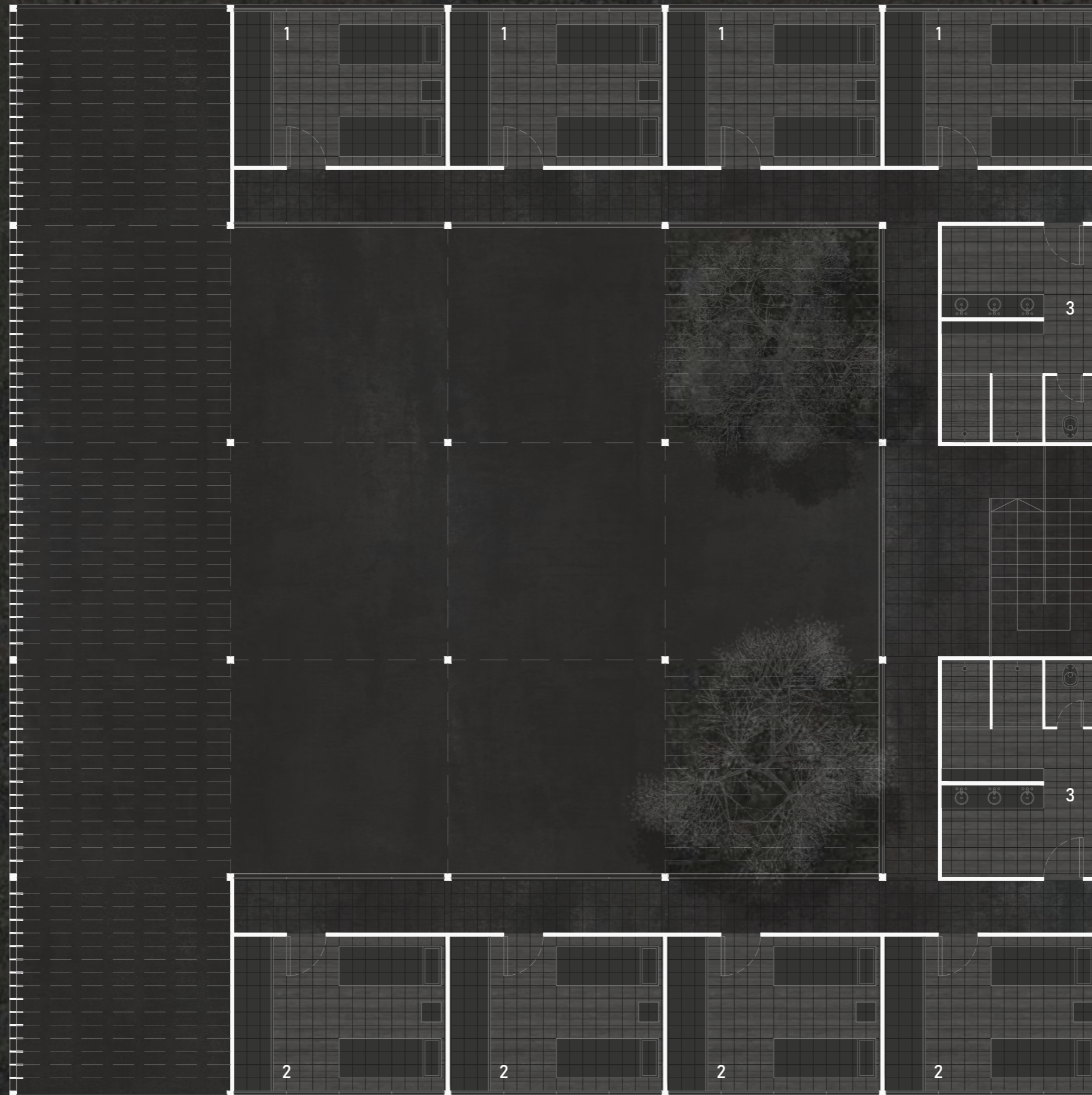
VALLE ESCONDIDO - Detachment



GROUND FLOOR | 1.100

1 GALLERY / 2 LIVING ROOM-KITCHEN-DINING ROOM (SCIENTIFIC) / 3 RESEARCH CELL / 4 LIVING ROOM-KITCHEN-DINING ROOM (TOURISTIC) / 5 SERVICES

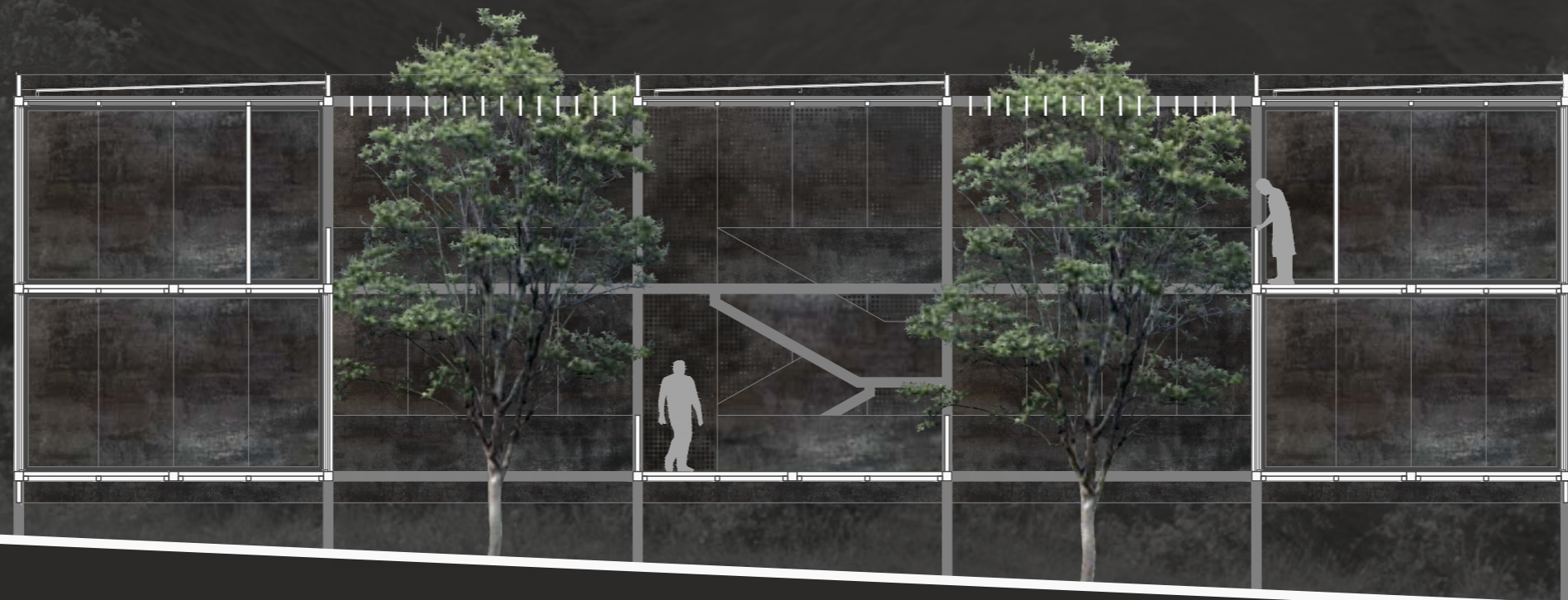
VALLE ESCONDIDO - Detachment



TOP FLOOR | 1.100

1 BEDROOMS (SCIENTIFIC) / 2 BEDROOMS (TOURISTIC) / 3 SERVICES

VALLE ESCONDIDO - Detachment

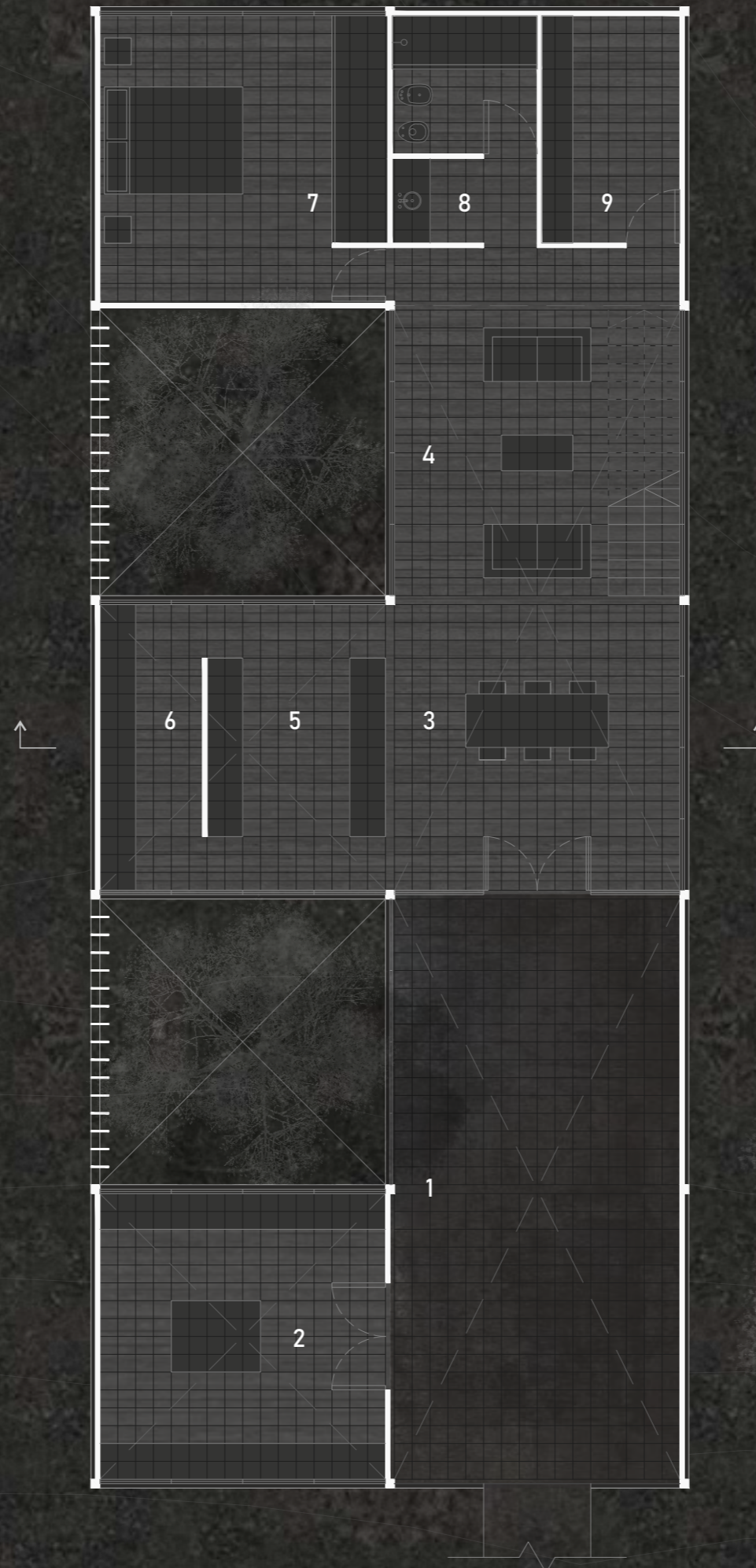


SECTION | 1.100

VALLE ESCONDIDO - Detachment



PARK GUARD HOUSE



GROUND FLOOR | 1.100

1 GALLERY / 2 MAINTENANCE WORKSHOP / 3 DINING ROOM / 4 LIVING ROOM / 5 KITCHEN / 6 LAUNDRY / 7 PARK GUARD BEDROOM / 8 SERVICES / 9 DESK

PARK GUARD HOUSE



1 PARK GUARD BEDROOM / 2 SERVICES / 3 DESK

TOP FLOOR | 1.100

PARK GUARD HOUSE



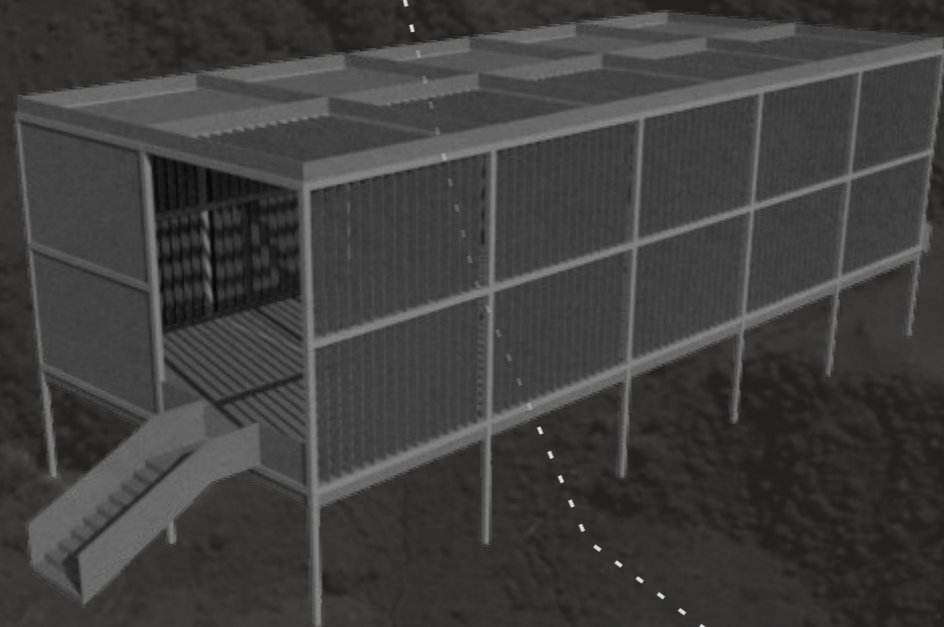
PARK GUARD HOUSE



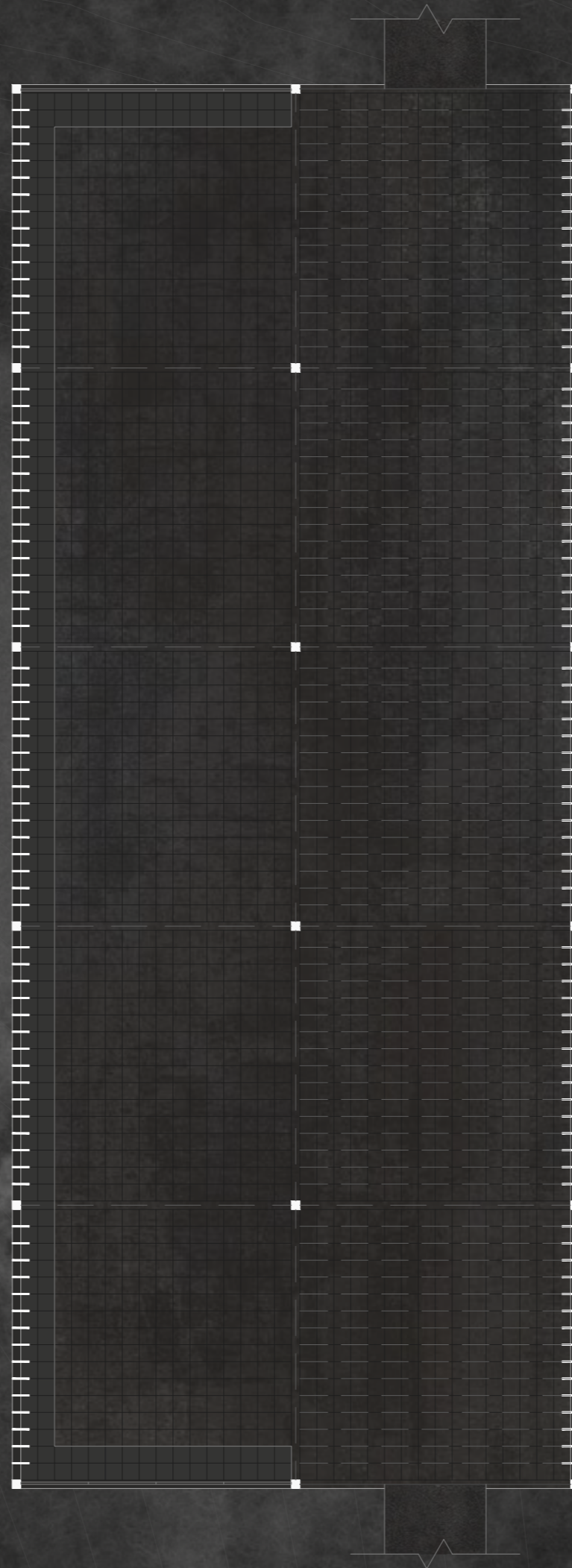
PARK GUARD HOUSE



LA CASCADA - Posta



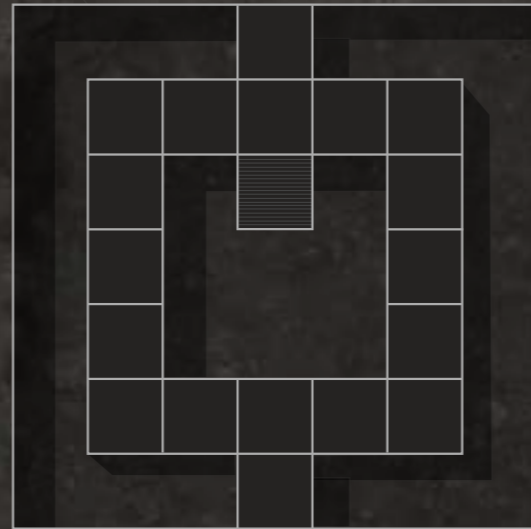






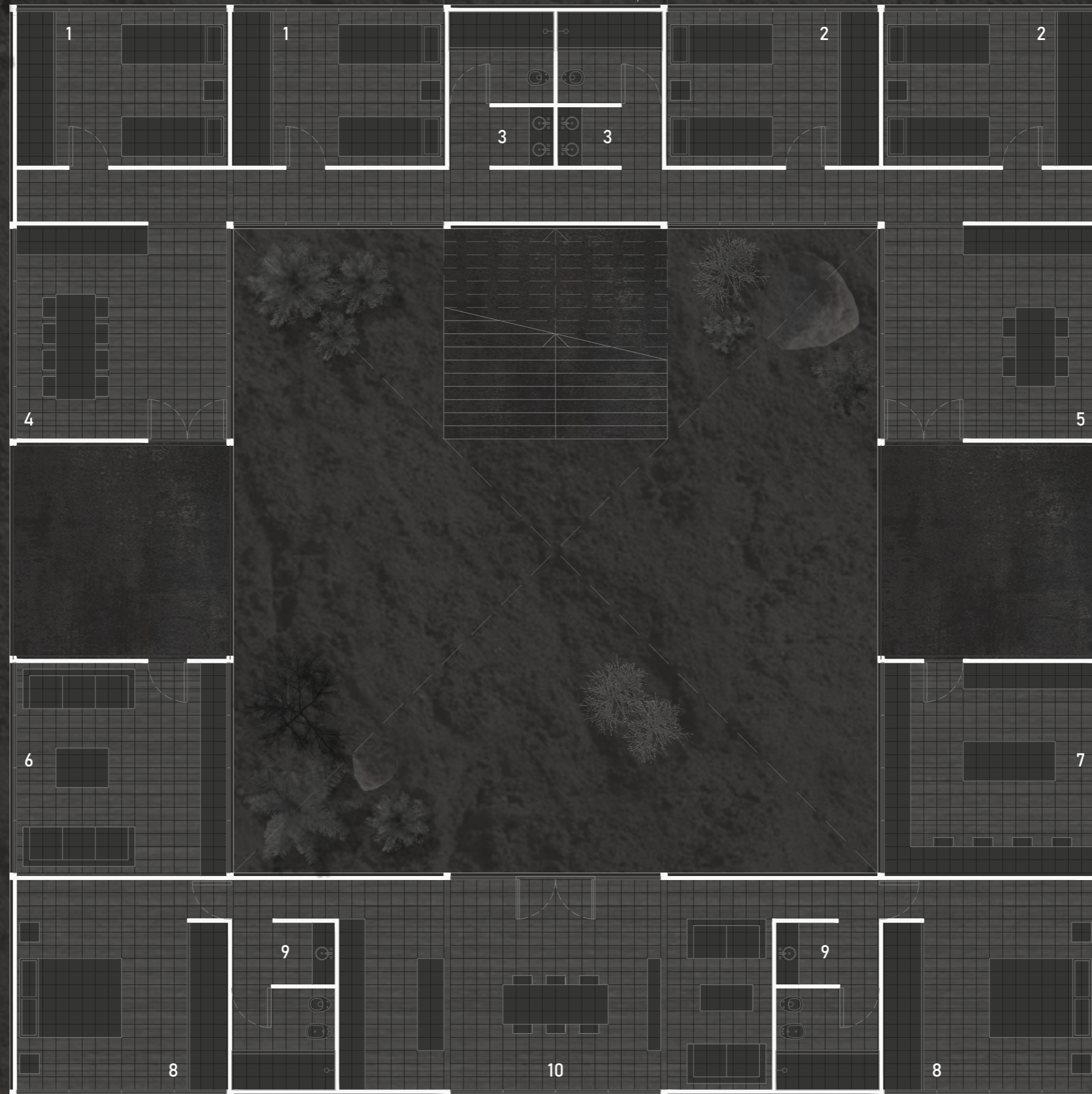
LA CIUDACITA - Destacamento







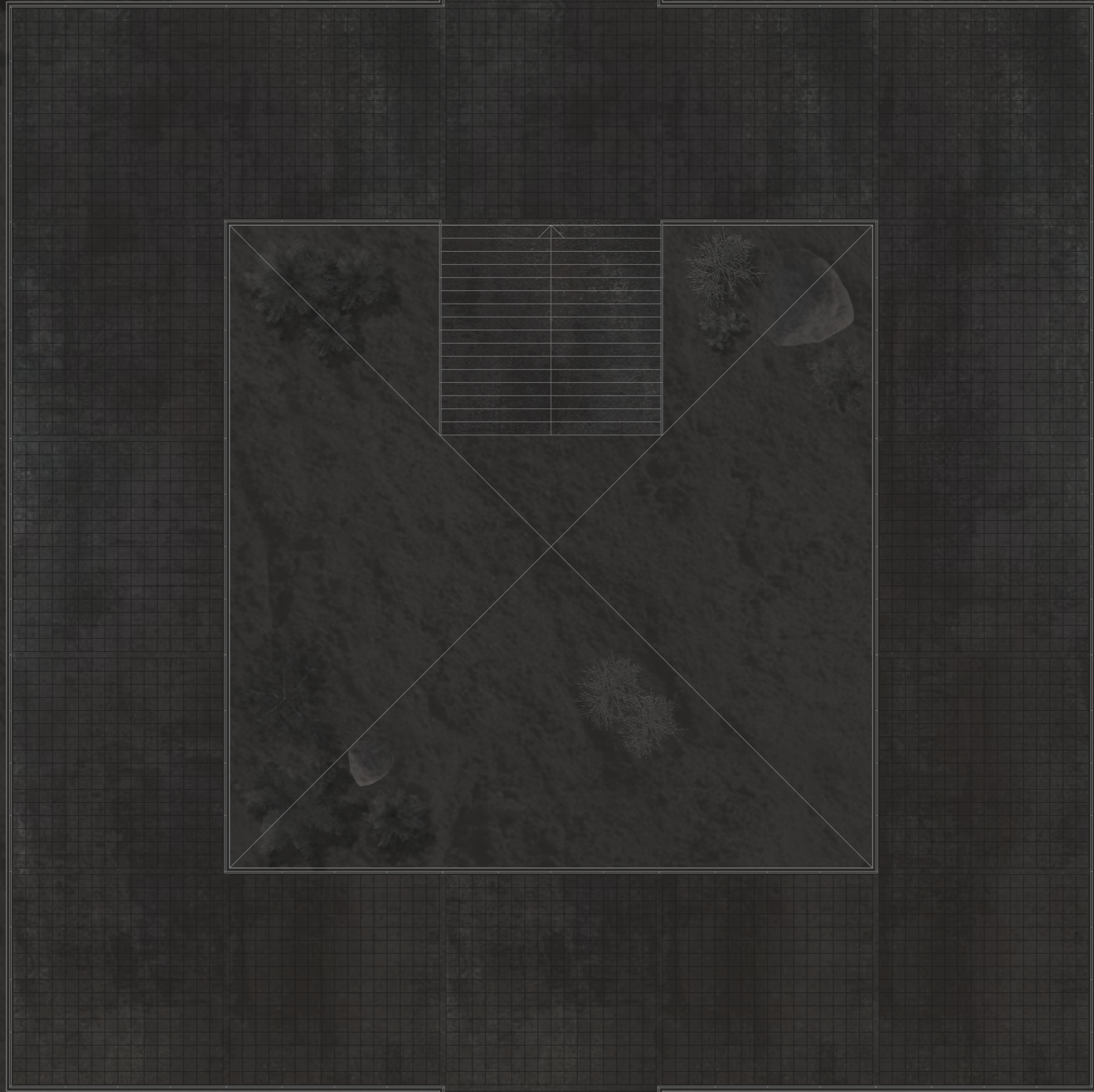
LA CIUDACITA - Detachment



GROUND FLOOR | 1.100

1 BEDROOMS (TOURISTIC) / 2 BEDROOMS (SCIENTIFIC) / 3 SERVICES / 4 KITCHEN-DINING ROOM (TOURISTIC) / 5 KITCHEN-DINING ROOM (SCIENTIFIC)
6 LIVING ROOM / 7 RESEARCH CELL / 8 PARK GUARD BEDROOM / 9 SERVICES PARK GUARD / 10 KITCHEN-DINING ROOM-LIVING ROOM PARK GUARD

LA CIUDACITA - Detachment



GROUND FLOOR | 1.100

1 BEDROOMS (TOURISTIC) / 2 BEDROOMS (SCIENTIFIC) / 3 SERVICES / 4 KITCHEN-DINING ROOM (TOURISTIC) / 5 KITCHEN-DINING ROOM (SCIENTIFIC)
6 LIVING ROOM / 7 RESEARCH CELL / 8 PARK GUARD BEDROOM / 9 SERVICES PARK GUARD / 10 KITCHEN-DINING ROOM-LIVING ROOM PARK GUARD

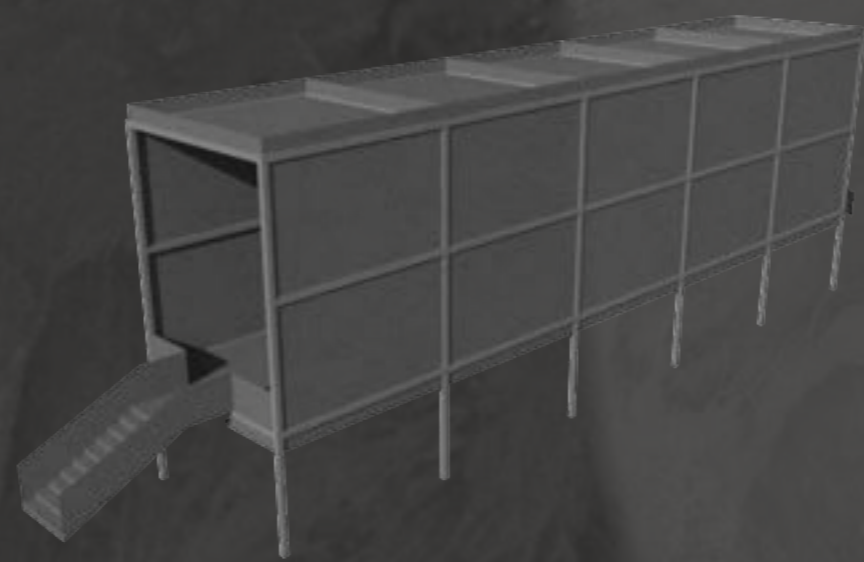




ZIP-LINE TOWER



ABRA DEL INCA - Posta









Corbella, Patricio
Fleischmacher, Alfredo

