

CONTEXT ANALYSIS

Nugegoda is a suburb of Colombo
 High density population
 Two main axial roads
 Popular as a commercial and an educational hub
 Commercial buildings are in the central city along with residential and educational institutes around the city
 Most used mode of transport is the train

Weaknesses

No proper physical and visual links
 Lack of shading and thermal comfort
 Inadequacy of interactive spaces
 High traffic activity and pollution
 Segregation between social levels

Strengths

Selection of a functional node as the site
 A prominent educational hub
 Proximity to bus stand and railway station
 Target groups, artists, general public
 High density public activity
 Uniform terrain

Opportunities - Macro Context Analysis

- Commercial
- Educational
- Transportational
- Residential
- Public Government
- Religious
- Financial
- Resturants
- Private Companies
- Under Construction
- Hostels
- Health
- Greenary and Urban Park
- Irrigation

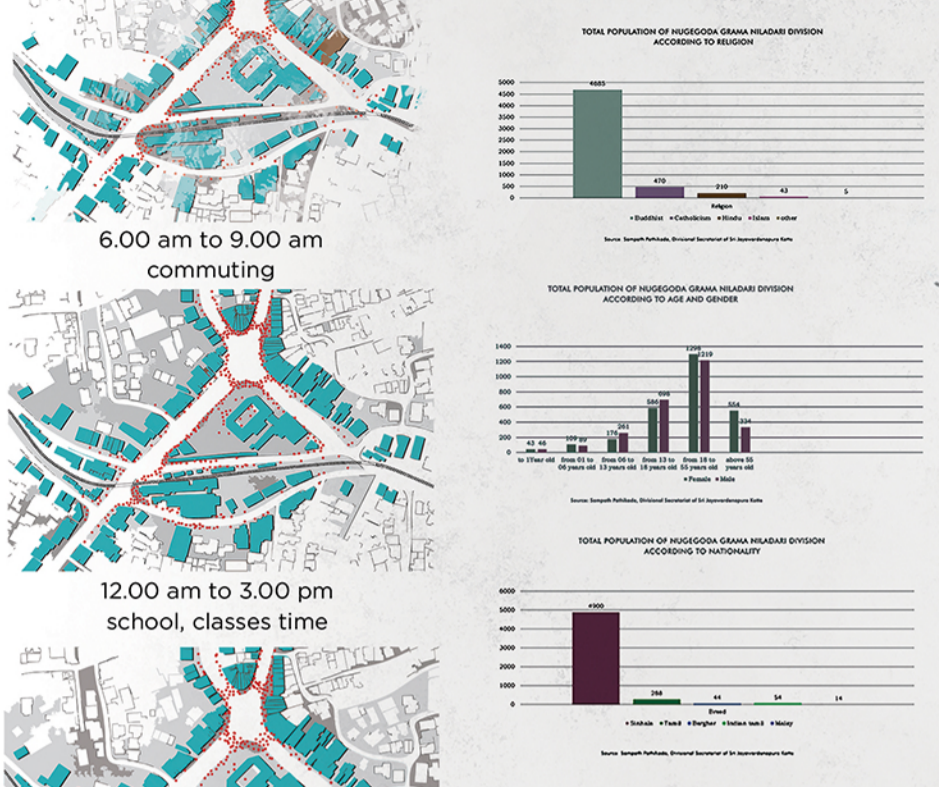
Superimpose an active abstract layer
 Compacted
 Pedestrian
 Transportaion
 Commercial
 Educational
 Residential
 Environmental

Existing City

Rushed, busy yet a boring layer
 Needs - 1. Commercial
 2. Educational
 3. Recreational

SOCIAL ANALYSIS

Social Variety



Mix Use - Cultural / Traditional / Religious patterns - Need of celebration



Capital City Development Plan (Nugegoda)

Defining a ceremonial access to welcome city visitors
 Improvements to the existing city facade
 Improved marketability
 Inner city transitional node- supermarket junction
 Uplifting particular nodes enhances the urban aesthetics.
 Including stages, gates, signboards, architectural and landscape elements

Social Issues

Poor interaction with neighbourhood
 Life as a unit (introverted)
 Busy and exhaustion
 Incapacitated recreational amenities
 Psychological deterioration among children and youth

Solutions

Creating versatility / diversity
 Empowering community gathering
 Active citizen engagement
 Social cohesion
 Building linkage between target groups

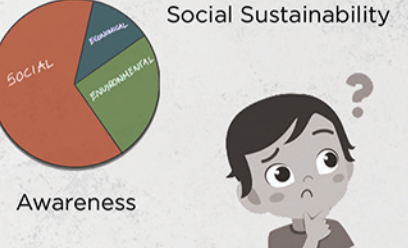
Users

General Public, Pedestrians
 Adults
 Youth
 Kids
 Artists
 Educational Institutes
 Students
 Undergraduates

Contemporary Arts = now (The Present)

No limits for contemporary arts
 Art changes into abstract interpretations
 Dealing with daily issues- politics, economics, social, and cultural

Sustainability



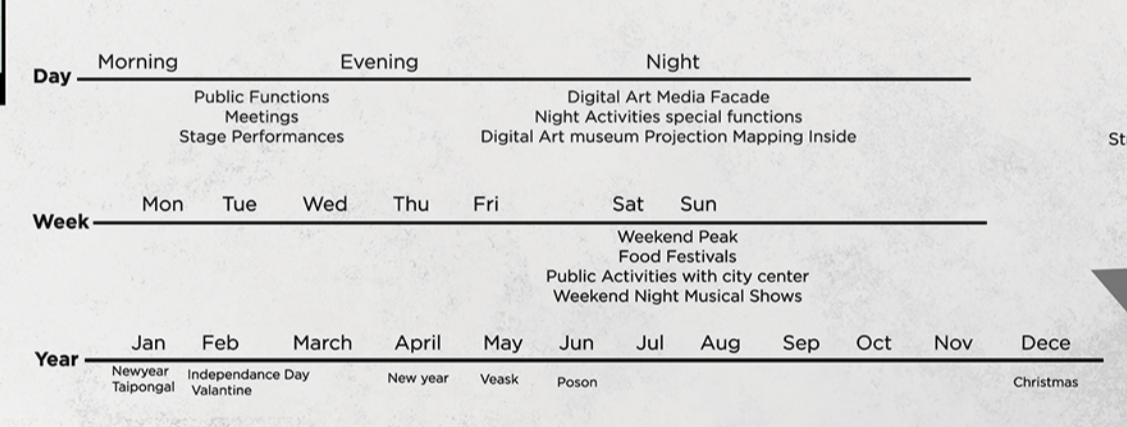
Solution ARTS TRENDING ART CONTEMPORARY ARTS

Contemporary Art Museum is a part of a development vision which is to be implemented in Nugegoda Triangle, (city center). This would be a new collaboration of public spaces, technology and architecture to create a landmark acting as an icon of the contemporary and future society. Further it provides a focal point/ landmark for artists in Sri Lanka, while providing recreational functions for general public and experimentation spaces for the contemporary arts with technology.

Land art - granting an iconic building to Nugegoda within the city center (based on the capital city development plan, Nugegoda Supermarket area regeneration project-UDA, development plan and analyzed 3rd need of the city)
 Why recreation? entertaining, recreational functions link people with each other and avoid physical and mental strain.
 Variable spaces to experience
 Day-time use as a public space with public activities, festivals, art exhibitions, etc.
 Evening and night time with digital arts museum exhibitions and media facade performances a vital peak into the future of arts

Exploring the "Art of Construction"
 Building as a contemporary art
 Grand entrance to the city center
 Youth hostel (underneath the platform)
 Youth hostel is also a part of this Contemporary Art Museum. It empowers artistic commune (local and foreign artists) who wants to gather and collaborate with each other.

The project proposes a combined solution for the prevailing issues of the context and the issues of inadequate facilities for contemporary art industry of Sri Lanka. Roof top acts as an urban garden platform, a stage, an open-air auditorium to watch digital art on the media facade

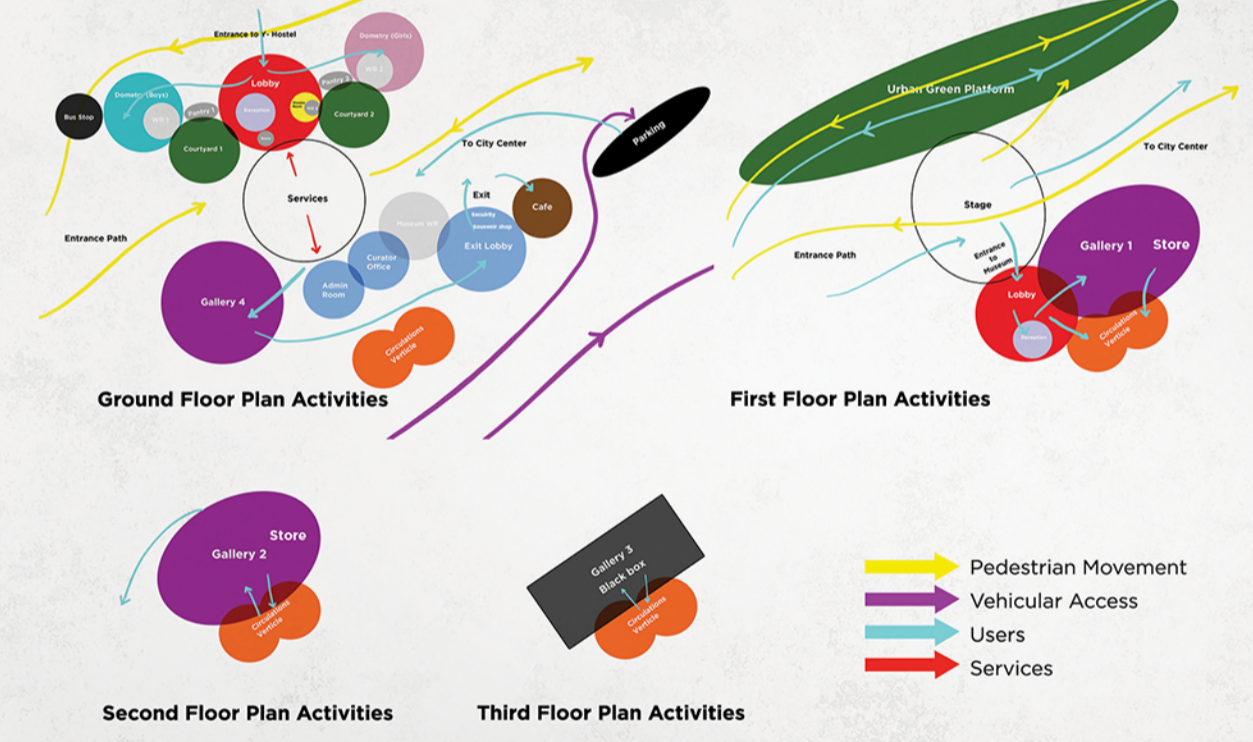


Special Structure light-ups on poya days, mothers' day, national festivals, (media facade is vivified with relevant themes) Street functions - food festivals, street arts, stage performances (dramas, musical shows, and other vivid urban events) Theme boards are used to attract people Making entrance to the city center (adaptive upon seasons)

Site Photos



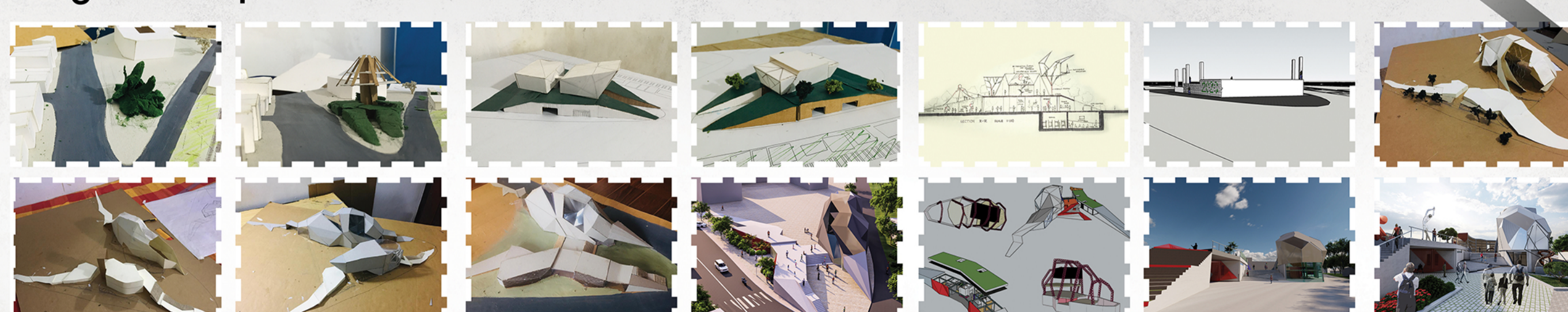
Programme



Precedents



Design Development



Brief

Contemporary Art Museum			
Description	Nos	Area	Total Area
Entrance			
Lobby	1	50.3 m ²	58.3 m ²
Reception/ Information/ Ticketing	1	8 m ²	
Collection			
Gallery 1	1	143 m ²	368 m ²
Gallery 2	1	117 m ²	
Gallery 3 (Black Box)	1	53 m ²	
Gallery 4	1	55 m ²	
Admin			
Curator's Office	1	23 m ²	37.5 m ²
General Admin	1	13 m ²	
Wash Rooms	1	1.5 m ²	
Washrooms			
Male	3	11.2 m ²	34 m ²
Female	3	11.2 m ²	
Disable	1	4.4 m ²	
Exit			
Exit Lobby	1	29.0 m ²	43 m ²
Souvenir shop	1	9.5 m ²	
Security room	1	4.5 m ²	
Maintenance / Services			
Cleaning/Lighting/ Power Supply	1		74 m ²
Youth Hostel			
Entrance			
Lobby (Common Space) & Reception	1		32 m ²
Office	1		
Warden Room			
Washroom	1		10 m ²
Accommodation			
Dorms	2	35 m ² x 2	110.4 m ²
Washrooms	4-M 4-F	14.5 m ² x 2	
Self-kitchen (Pantry)	2	5.7 m ² x 2	
Urban garden (roof top platform)			250 m ²
Total Area			1016 m²