

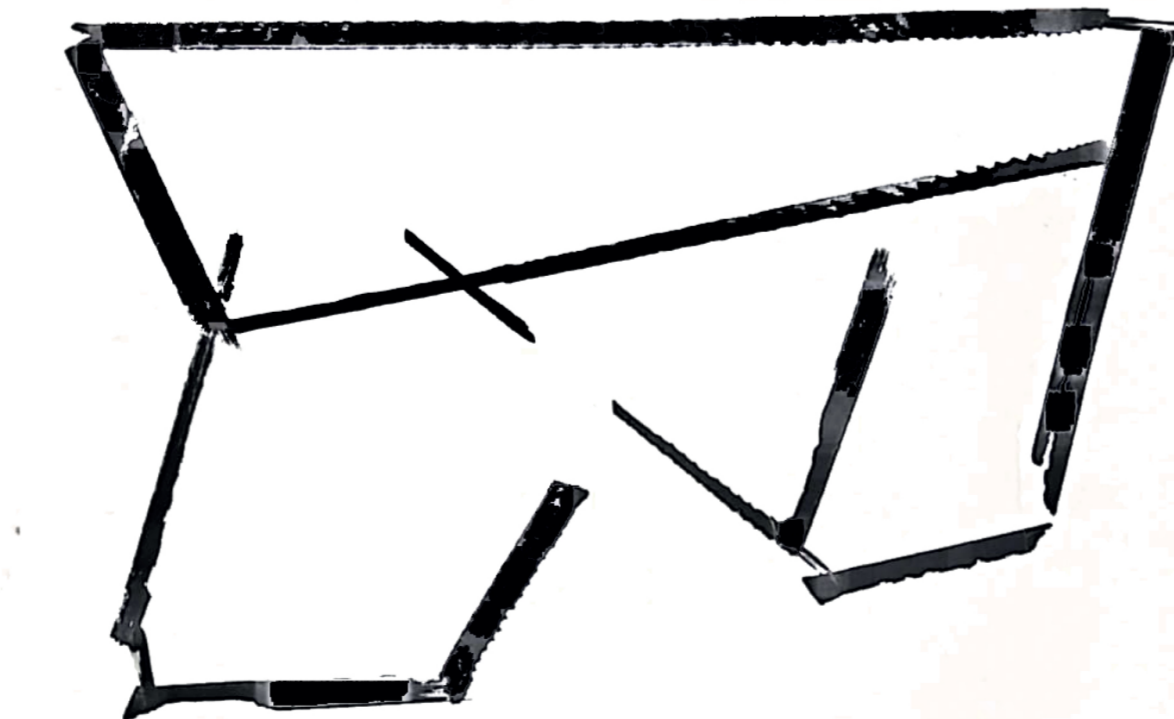
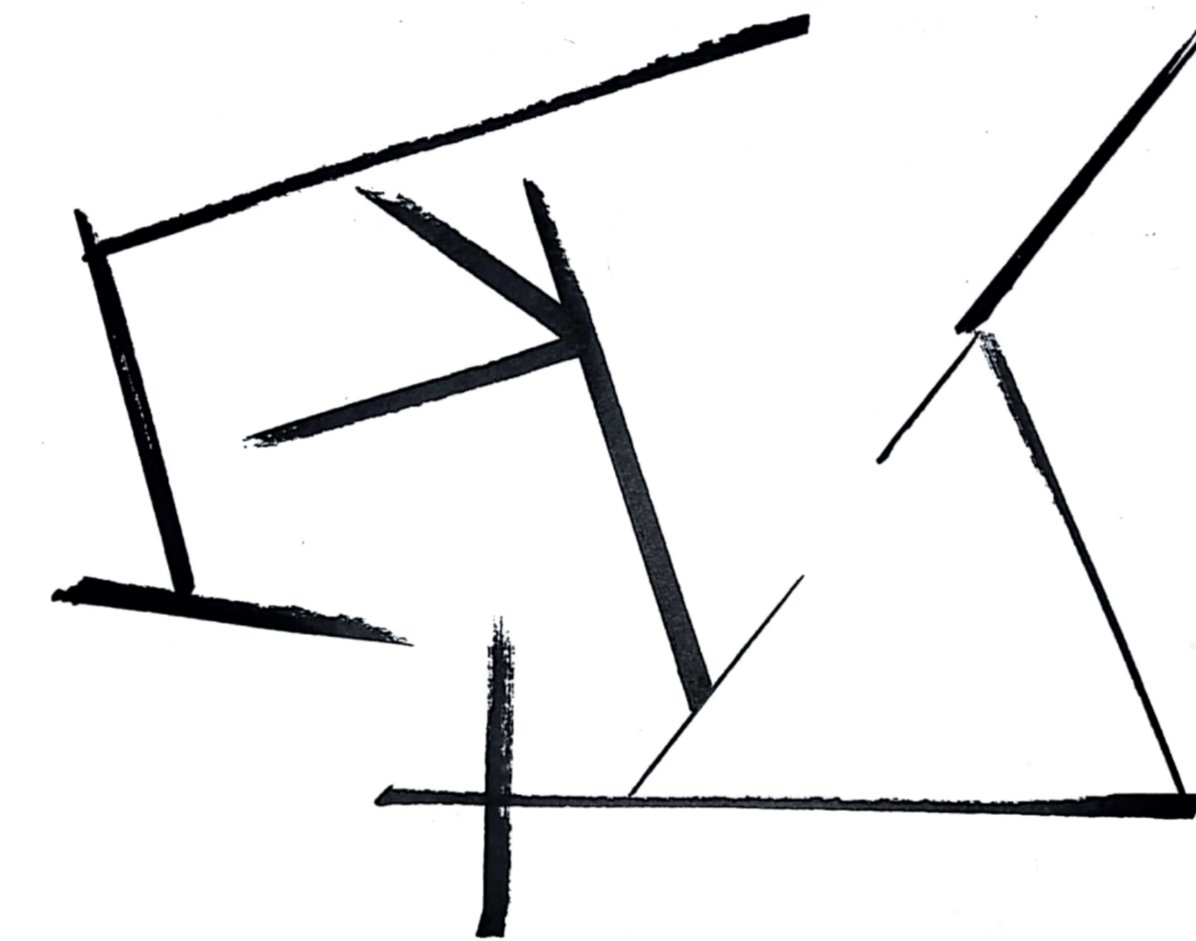
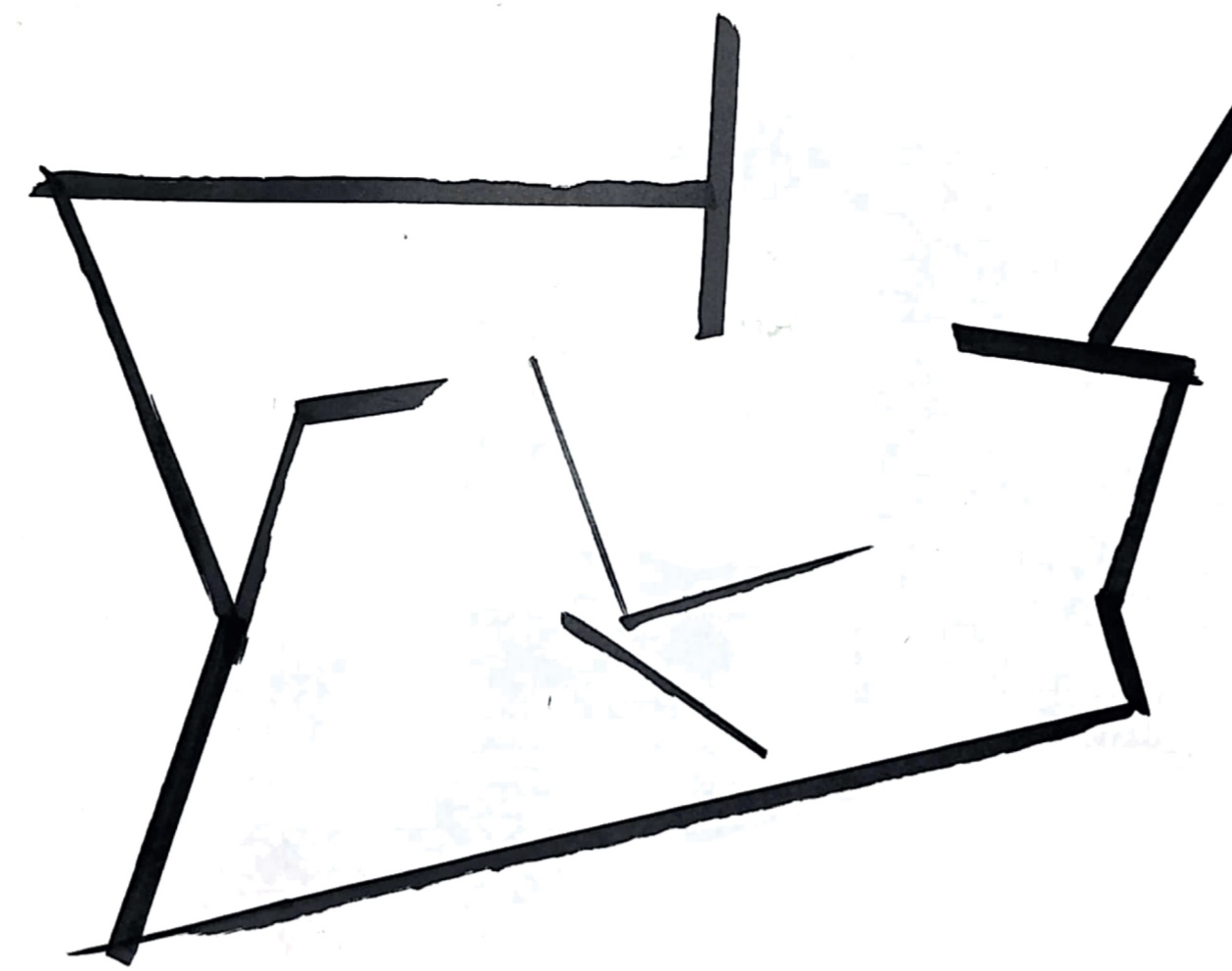
Innovation is a new layer

In time, the structure we have come to know has become part of a long chain of buildings that form a layer - the skyline. The project is dismantling those layers, resting them perpendicularly and adjacent to each other so that a space is created. A spaces that enables creativity, innovation, and advancements.

The layers set the stage for the renewal of cultural and technological values through flexibility of the size of the planned spaces.

The structure does not determine the use and the use does not characterize the space. It is material, composition, air, and light that shape the unique nature of each chamber. Each panel tilts into the others so that they all confine an almost circular space. The structure's inclination is tipped yet conclusive, ignoring transition between layers, fixed in time. Some spaces link stories of the building, simulating cracks that penetrate below the ground and allow to peel, disassemble and expose unique spaces.

The skyline is distinctly part of the Anthropocene. This layer may be the first synthetic layer on Earth or alternatively a layer that concludes an era. Today it is a significant perceptual shift in everything related to our impact on the earth.



Renewal is possible on the expence of the existing layers

Innovation and renewal can exist only if they have a solid **ground** that can be formed and transformed in almost sculptural way.

The project shows us the seeds of innovation. Destruction, by definition, leads to damage. From within the wreckage, new opportunities for innovative breakthroughs emerge.

