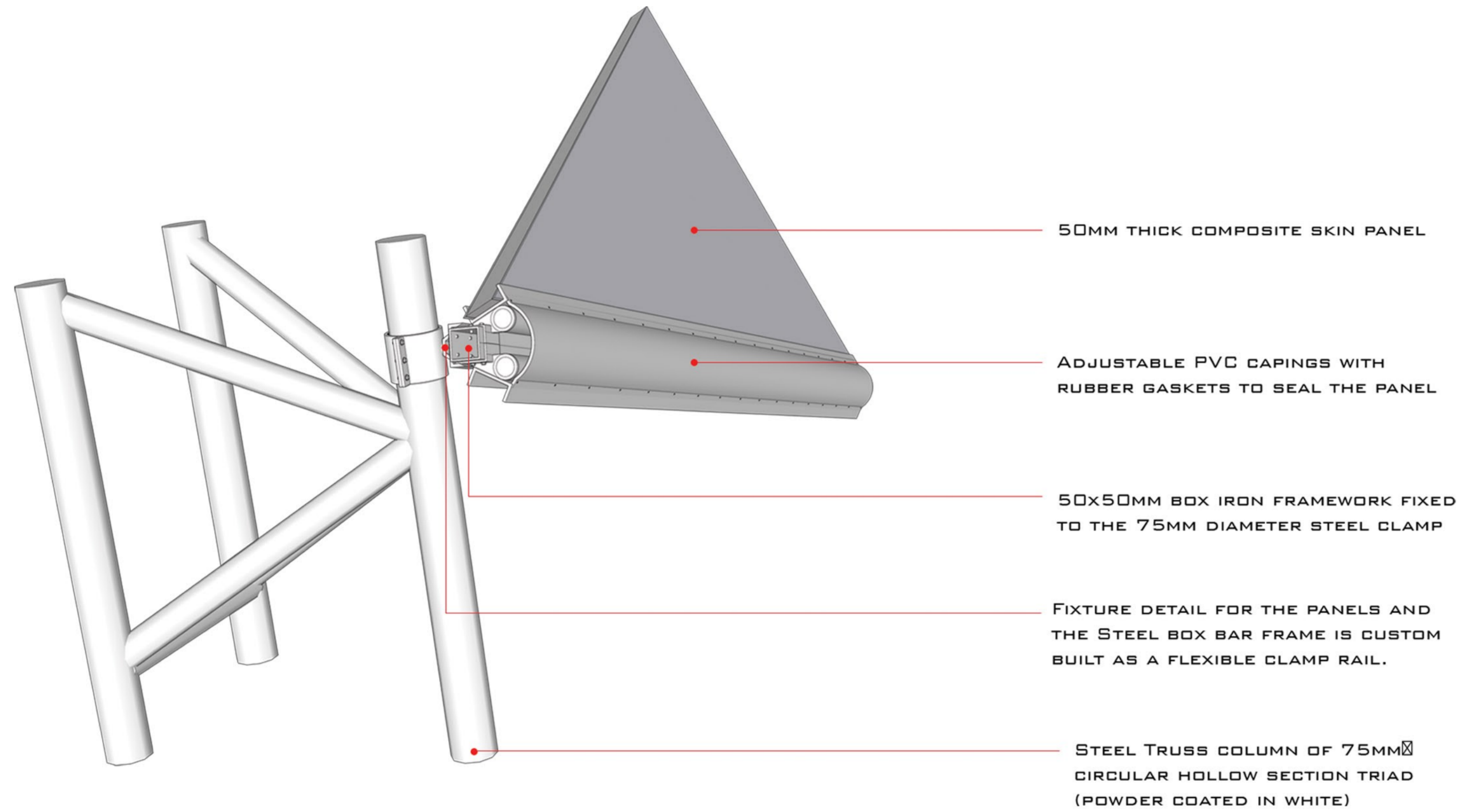
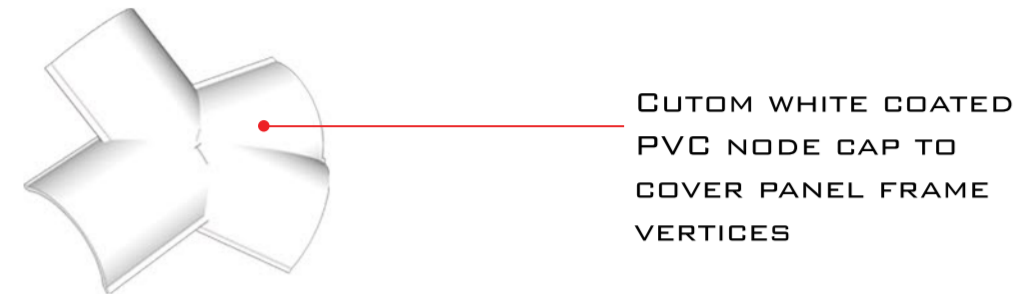
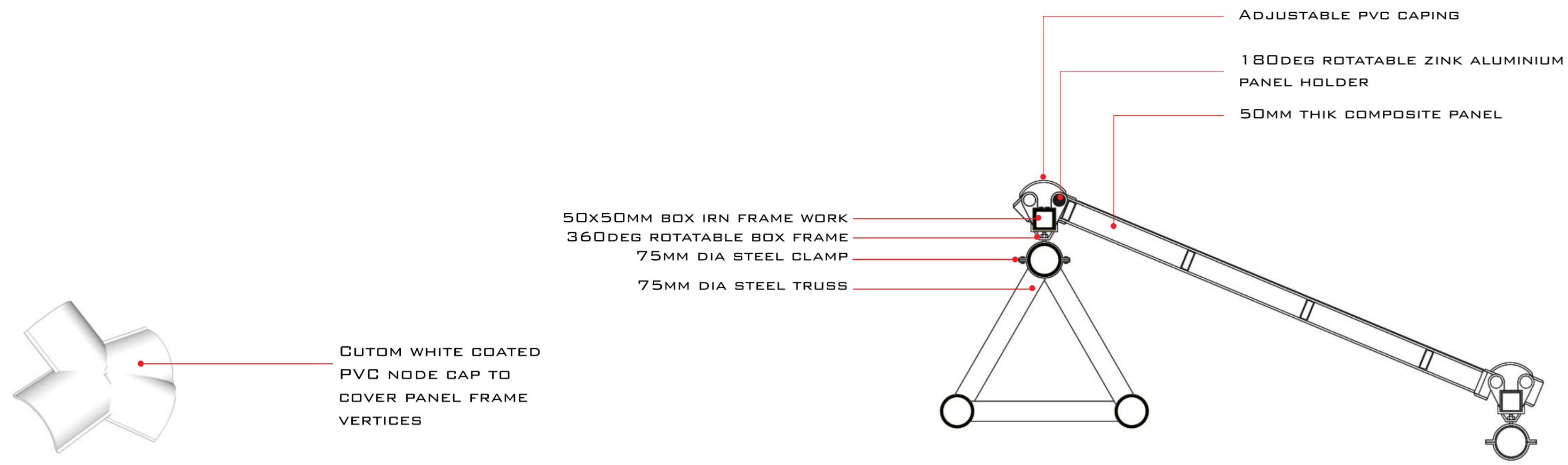
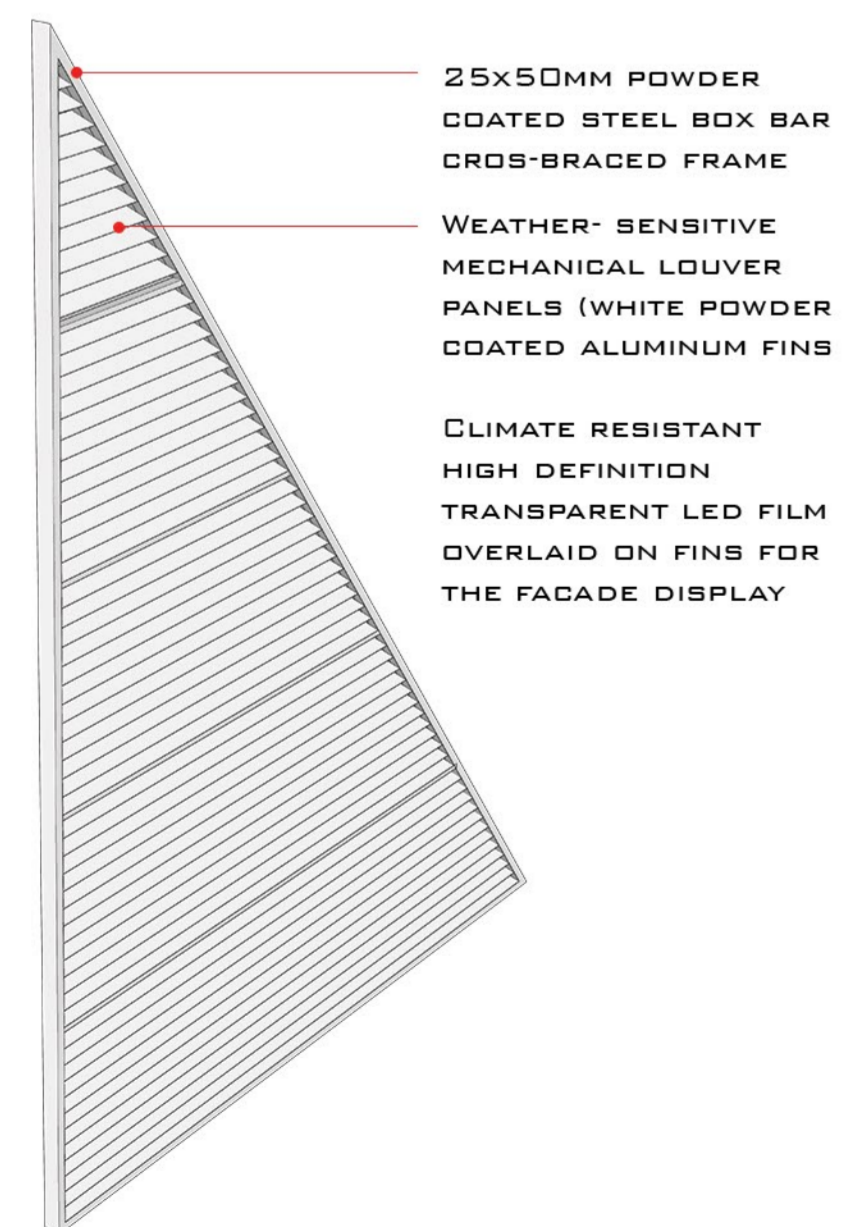


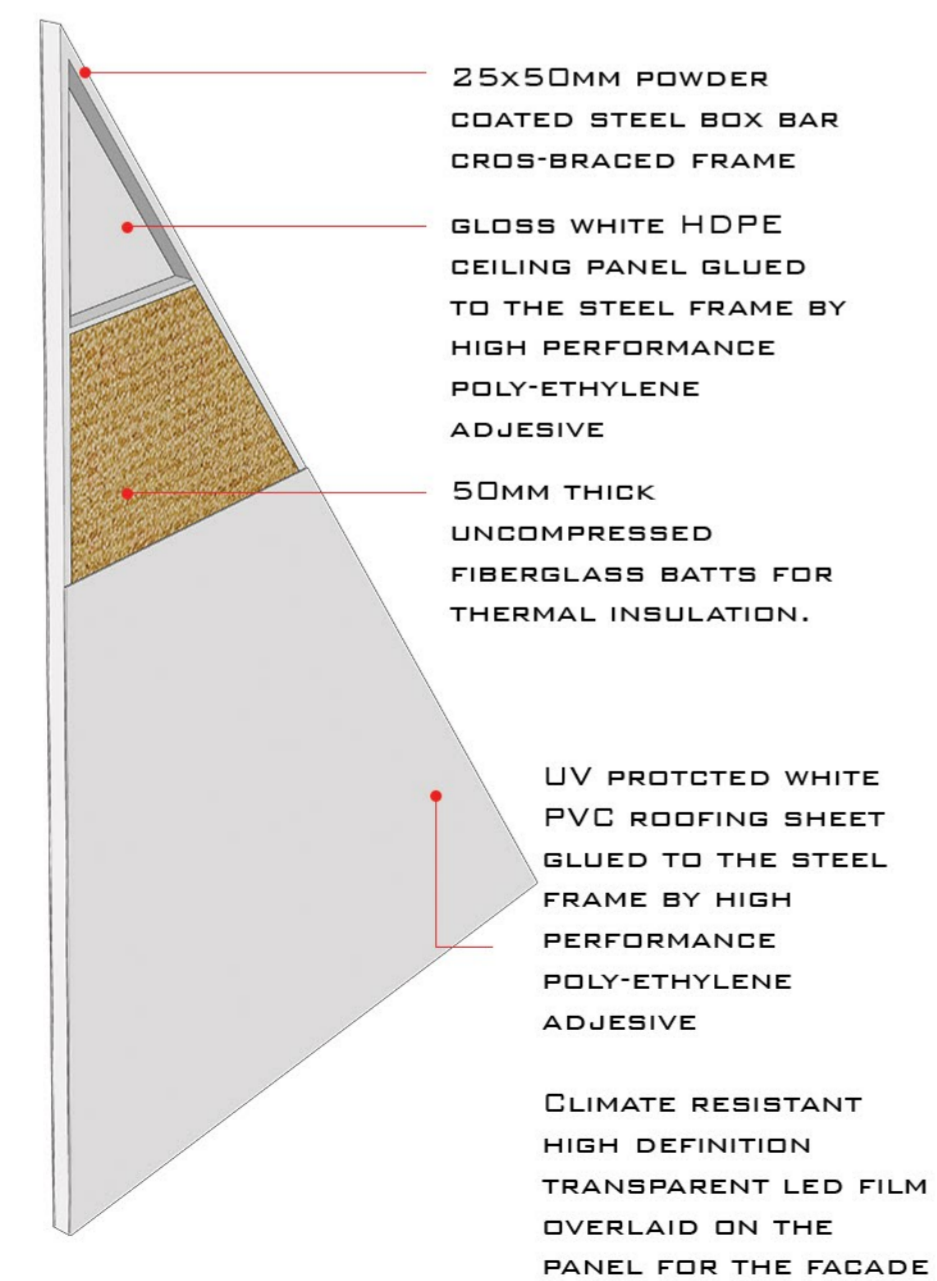
Museum facade Details



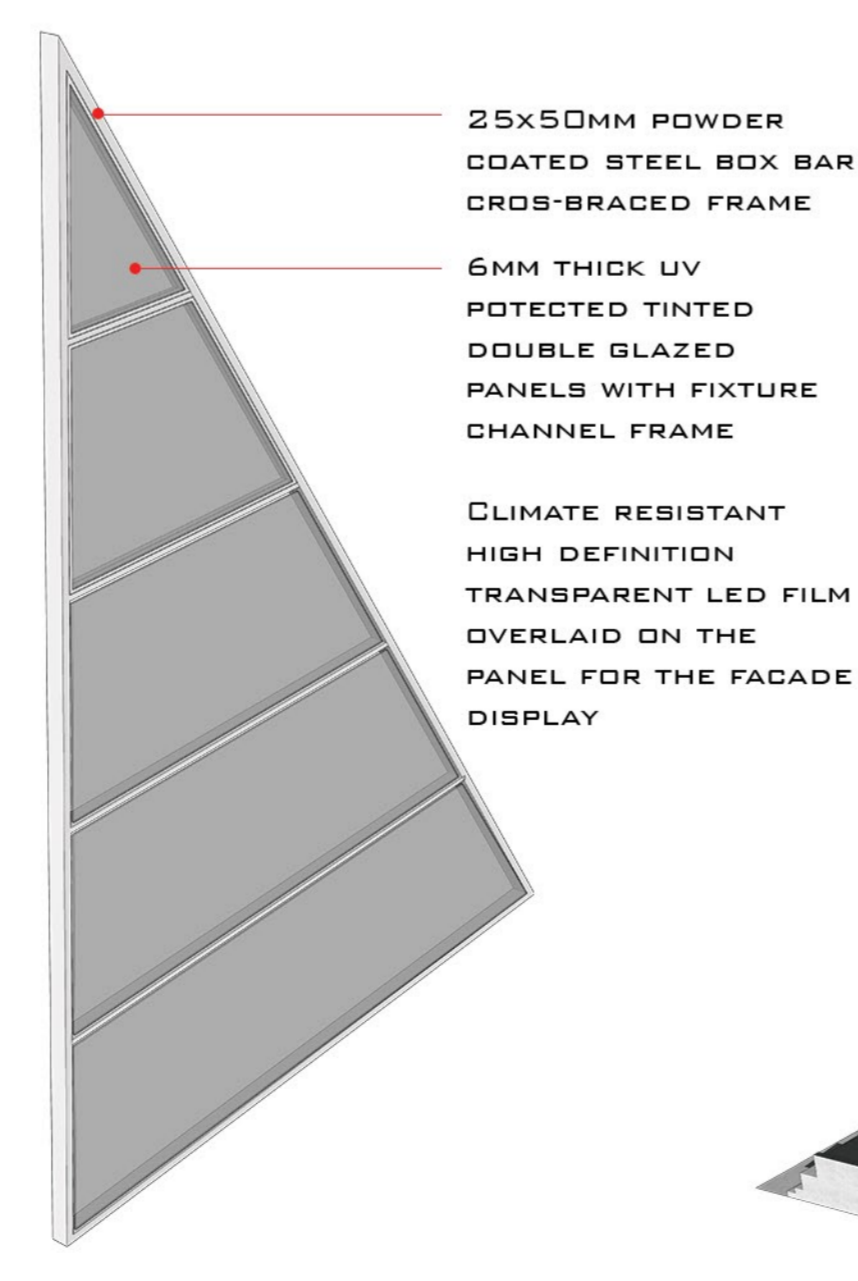
ADAPTIVE PEARMEABLE SKIN



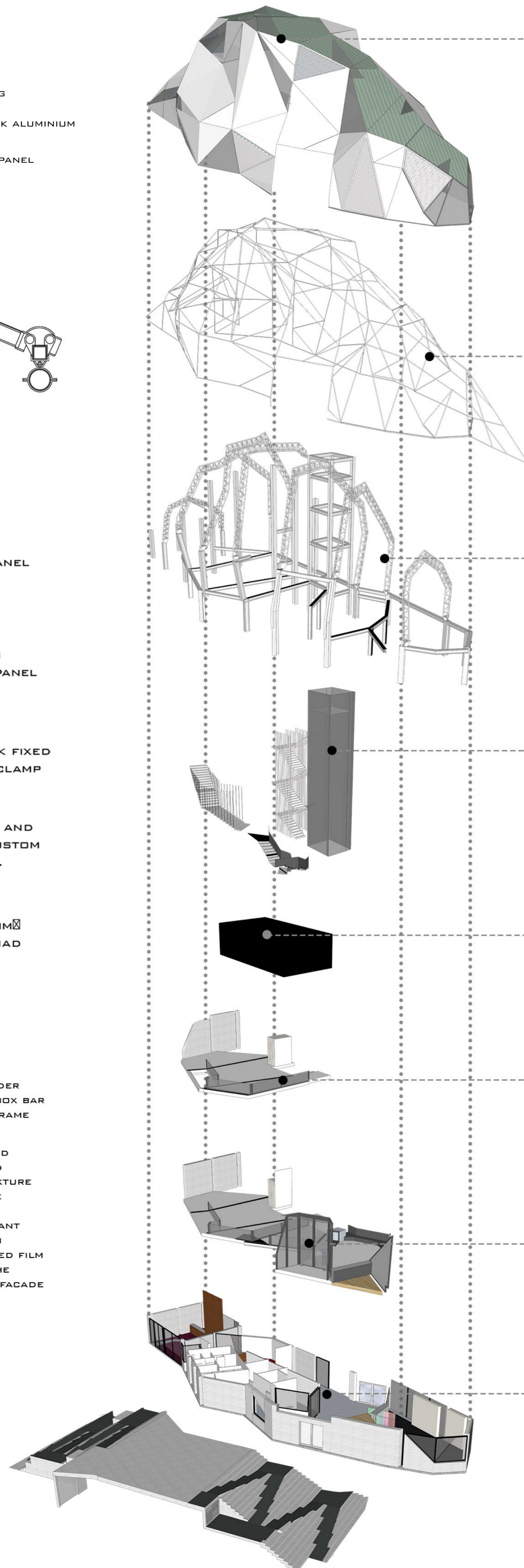
IMPERMEABLE SKIN



LIGHT PERMEABLE SKIN



EACH PANEL IS CUSTOM MADE TO FIT THE RELEVANT FRAME DIMENSIONS.



MEDIA FACADE

BUILDING'S SKIN WITH A TESSELLATED GEOMETRY IS THE MAIN FEATURE OF THE COMPLETE SCHEME. IT CATERES MULTIPLE FUNCTIONS SUCH AS BUILDING ENVELOPING, FENESTRATION, ENERGY GENERATION, DISPLAYING DIGITAL MEDIA AND GENERATING AESTHETICS IN THE URBAN BUILT FABRIC. THE FAÇADE CONSISTS OF THREE MAJOR CUSTOM-MADE PANEL MODULES.

- A. ADAPTIVE PERMEABLE SKIN PANEL- WEATHER SENSITIVE AUTOMATED GLASS LOUVERS FOR IMPROVED LIGHT AND VENTILATION GAIN.
- B. IMPERMEABLE SKIN PANEL- SOLID LOOKING INSULATED OPAQUE PANEL OF PVC ROOFING AND CEILING
- C. LIGHT PERMEABLE SKIN- UV PROTECTED DOUBLE GLAZED PANEL FOR NATURAL LIGHTING

FACADE SKELETON

STRUCTURE ONTO WHICH THE SKIN PANELS ARE FIXED. IT IS NOT A LOAD BEARING STRUCTURE YET A COMPLETE SPACE FRAME WITH 50x50MM HIGH-GRADE POWDER COATED STEEL MEMBERS. SKELETAL IS FIXED TO THE MAIN SPACE FRAME COLUMNS BY A 360 DEG ROTATABLE FRAME HOLDER DETAIL.

EXPOSED MEMBERS EMPHASIZE THE GEOMETRY OF THE BUILDING FROM INDOORS.

MAINFRAME

CONSISTS OF 400x400MM HIGH GRADE STEEL 'H' COLUMNS AND STEEL TRUSS COLUMN OF 75MM \square CIRCULAR HOLLOW SECTION TRIAD CONNECTED TO EACH OTHER WITH A SPECIAL BOLTED PLATE JOINERY.

MAIN BEAMS ARE 300x150MM HIGH GRADE STEEL 'I' SECTIONS ACCENTUATED IN THE FLOOR IN BLACK COLORED EXPOSED FLANGE FACE.

INTER-LEVEL ACCESSIBILITY

MAIN STAIRCASES ARE CABLE SUSPENDED STEEL EXPANDED MESH STRUCTURES WITH ARGB UNDER-GLOW FOR THEMATIC ACCENTUATION IN THE MUSEUM INDOORS.

GLAZED ELEVATOR SHAFT AS A LIVE ELEMENT IN THE MUSEUM SPACE. CATERES BOTH PUBLIC AND DISABLED ACCESS

"BACK BOX"

A MINIATURE SUSPENDED/ CANTILEVERED ENCLOSED PLATFORM FOR VIRTUAL DIGITAL ARTS (GALLERY III). EXTERIOR ENCLOSURE IS OVERLAID WITH UHD PIXEL PITCH OLED DISPLAYS TO ENHANCE ITS FUTURISTIC SENSE. INTERIOR AMBIENCE AND MEDIA ACTIVITY IMPLY A "DIGITAL UNIVERSE".

SECOND FLOOR- GALLERY II

SENSE OF "EXPOSED TO UNIVERSE" WITH BLACK BOX AND VIRTUAL MEDIA ACTIVITY ON THE UPPER LEVEL.

ADAPTIVE SPACE FOR THEMATIC EXHIBITIONS AND EVENTS.

FIRST FLOOR- GALLERY I

ENTRANCE LEVEL AND THE INTERMEDIATE PLATFORM OF THE WHOLE MUSEUM SPACE.

RECEPTION AND THE GALLEY SPACE ARE ON AN ELEVATION FROM THE ENTRANCE LEVEL.

MATERIAL PALETTE AND COLOR SCHEMES ARE MINIMAL AND NON-DOMINATIVE.

GROUND FLOOR

ADMINISTRATION AND SERVICE FLOOR OF THE WINGS. ALSO HOUSES THE GALLERY IV AS THE LOWEST LEVEL EXHIBITION SPACE OF THE SEQUENCE.

SOLID OUTLOOK DUE TO RIGID CONCRETE/ MASONRY ENVELOPE AND HEAVY STRUCTURAL INTERVENTIONS TO BEAR THE MOST LOADS OF THE SUPERSTRUCTURE.

ADJOINS WITH CENTRAL STEP WAY AND PLATFORM.