

CABLE SUSPENDED STEEL EXPANDED MESH STAIRCASE (POWDER COATED IN WHITE)

UHD PIXEL PITCH OLED DISPLAY AS BOTH A DIGITAL SCREEN AND AN ELEMENTAL BLACK BOX

150x 300MM 'I' BEAM CANTILEVERED WITH THE SUPPORT OF BRACE BRACKET AND HIGH GRADE STEEL SUSPENSION CABLES

100MM THICK STEEL COMPOSITE FLOOR SLAB WITH GLOSS WHITE EPOXY FINISHING, ACCENTUATED WITH BLACK COLORED EXPOSED 'I' BEAM TOP FLANGES

SCISSOR SPOT LIGHTS WITH DAYLIGHT COLOR TEMPERATURE (HEIGHT AND ANGLE ADJUSTABLE).

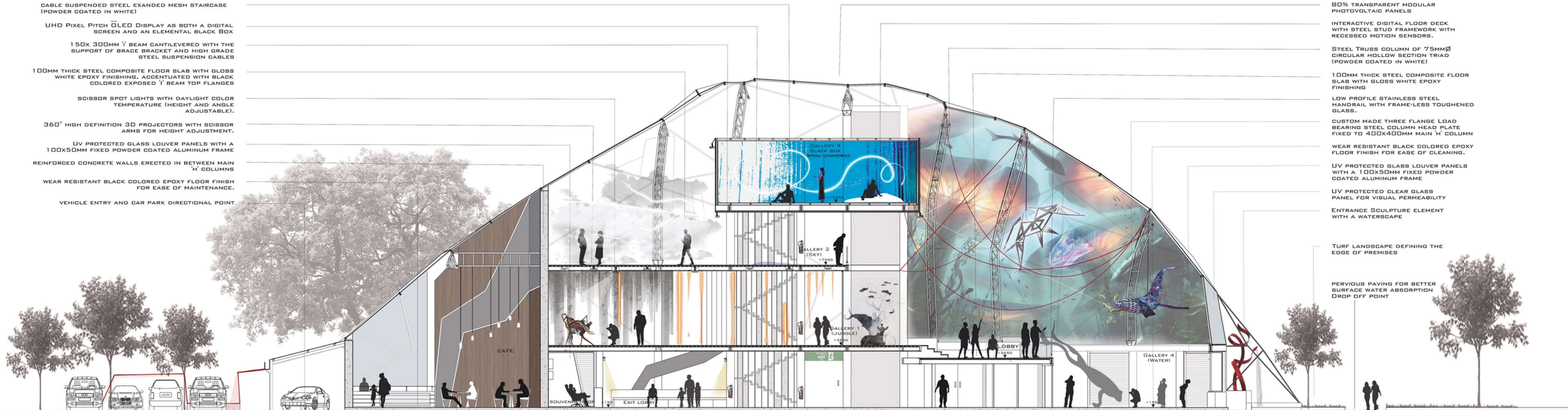
360° HIGH DEFINITION 3D PROJECTORS WITH SCISSOR ARMS FOR HEIGHT ADJUSTMENT.

UV PROTECTED GLASS LOUVER PANELS WITH A 100x50MM FIXED POWDER COATED ALUMINUM FRAME

REINFORCED CONCRETE WALLS ERECTED IN BETWEEN MAIN 'H' COLUMNS

WEAR RESISTANT BLACK COLORED EPOXY FLOOR FINISH FOR EASE OF MAINTENANCE.

VEHICLE ENTRY AND CAR PARK DIRECTIONAL POINT



80% TRANSPARENT MODULAR PHOTOVOLTAIC PANELS

INTERACTIVE DIGITAL FLOOR DECK WITH STEEL STUD FRAMEWORK WITH RECESSED MOTION SENSORS.

STEEL TRUSS COLUMN OF 75MMØ CIRCULAR HOLLOW SECTION TRIAD (POWDER COATED IN WHITE)

100MM THICK STEEL COMPOSITE FLOOR SLAB WITH GLOSS WHITE EPOXY FINISHING

LOW PROFILE STAINLESS STEEL HANDRAIL WITH FRAME-LESS TOUGHENED GLASS.

CUSTOM MADE THREE FLANGE LOAD BEARING STEEL COLUMN HEAD PLATE FIXED TO 400x400MM MAIN 'H' COLUMN

WEAR RESISTANT BLACK COLORED EPOXY FLOOR FINISH FOR EASE OF CLEANING.

UV PROTECTED GLASS LOUVER PANELS WITH A 100x50MM FIXED POWDER COATED ALUMINUM FRAME

UV PROTECTED CLEAR GLASS PANEL FOR VISUAL PERMEABILITY

ENTRANCE SCULPTURE ELEMENT WITH A WATERSCAPE

TURF LANDSCAPE DEFINING THE EDGE OF PREMISES

PERVIOUS PAVING FOR BETTER SURFACE WATER ABSORPTION DROP OFF POINT

Detailed Section X-X

100MM THICK COMPOSITE SLAB (WELDED WIRE FABRIC REINFORCED, 1MM THICK TRAPEZOIDAL G.I. DECKING WITH A CORRUGATION OF 80MM)

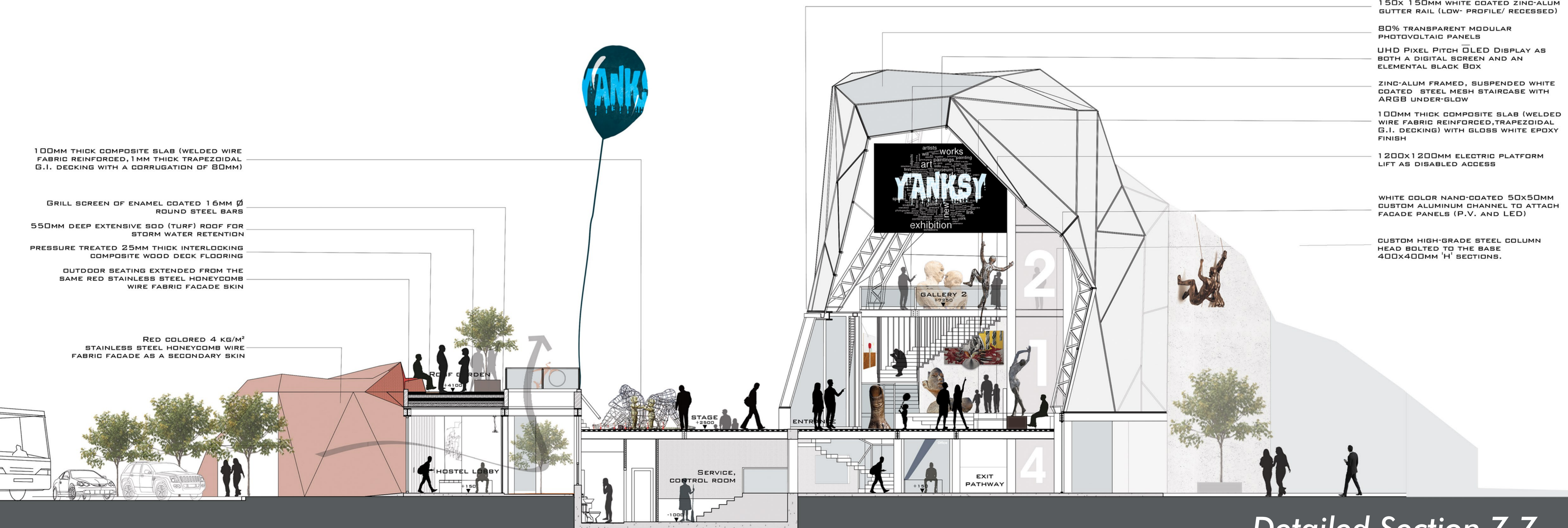
GRILL SCREEN OF ENAMEL COATED 16MM Ø ROUND STEEL BARS

550MM DEEP EXTENSIVE SOD (TURF) ROOF FOR STORM WATER RETENTION

PRESSURE TREATED 25MM THICK INTERLOCKING COMPOSITE WOOD DECK FLOORING

OUTDOOR SEATING EXTENDED FROM THE SAME RED STAINLESS STEEL HONEYCOMB WIRE FABRIC FACADE SKIN

RED COLORED 4 KG/M² STAINLESS STEEL HONEYCOMB WIRE FABRIC FACADE AS A SECONDARY SKIN



150x 150MM WHITE COATED ZINC-ALUM GUTTER RAIL (LOW-PROFILE/ RECESSED)

80% TRANSPARENT MODULAR PHOTOVOLTAIC PANELS

UHD PIXEL PITCH OLED DISPLAY AS BOTH A DIGITAL SCREEN AND AN ELEMENTAL BLACK BOX

ZINC-ALUM FRAMED, SUSPENDED WHITE COATED STEEL MESH STAIRCASE WITH ARGB UNDER-GLOW

100MM THICK COMPOSITE SLAB (WELDED WIRE FABRIC REINFORCED, TRAPEZOIDAL G.I. DECKING) WITH GLOSS WHITE EPOXY FINISH

1200x1200MM ELECTRIC PLATFORM LIFT AS DISABLED ACCESS

WHITE COLOR NANO-COATED 50x50MM CUSTOM ALUMINUM CHANNEL TO ATTACH FACADE PANELS (P.V. AND LED)

CUSTOM HIGH-GRADE STEEL COLUMN HEAD BOLTED TO THE BASE 400x400MM 'H' SECTIONS.

Detailed Section Z-Z