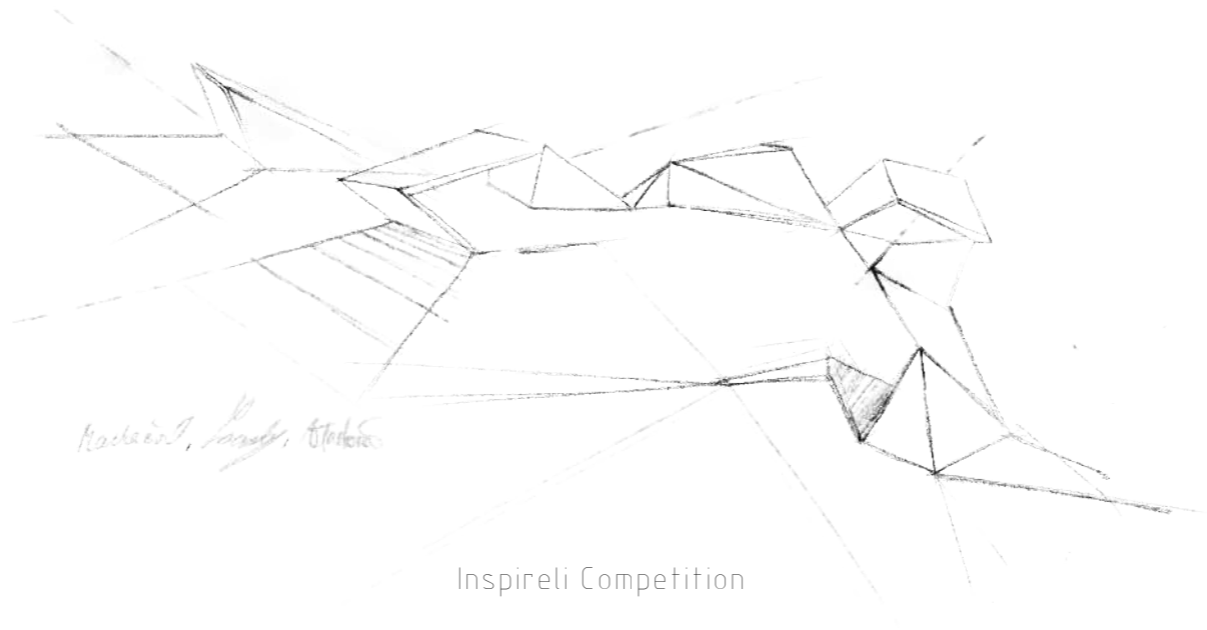


CAMPUS STU INNOVATION
INSPIRELI COMPETITION 2020/2021



Tomáš Závodný
Tereza Macháčová
Vendula Vlachová

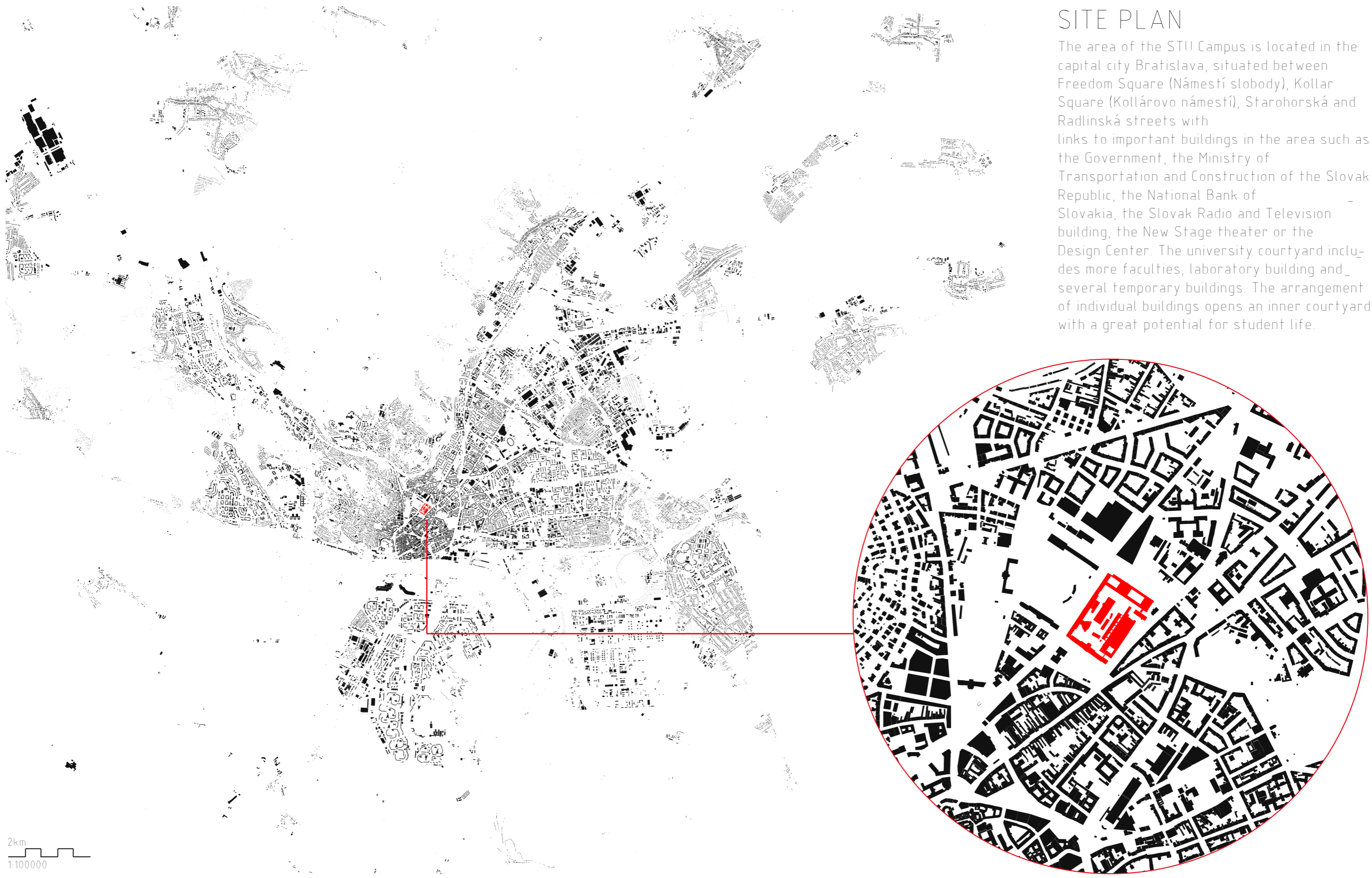
CTU, Faculty of Civil Engineering
Programme Architecture and Civil Engineering (Bachelor)



Radovan, Land, Bratislava

Inspireli Competition

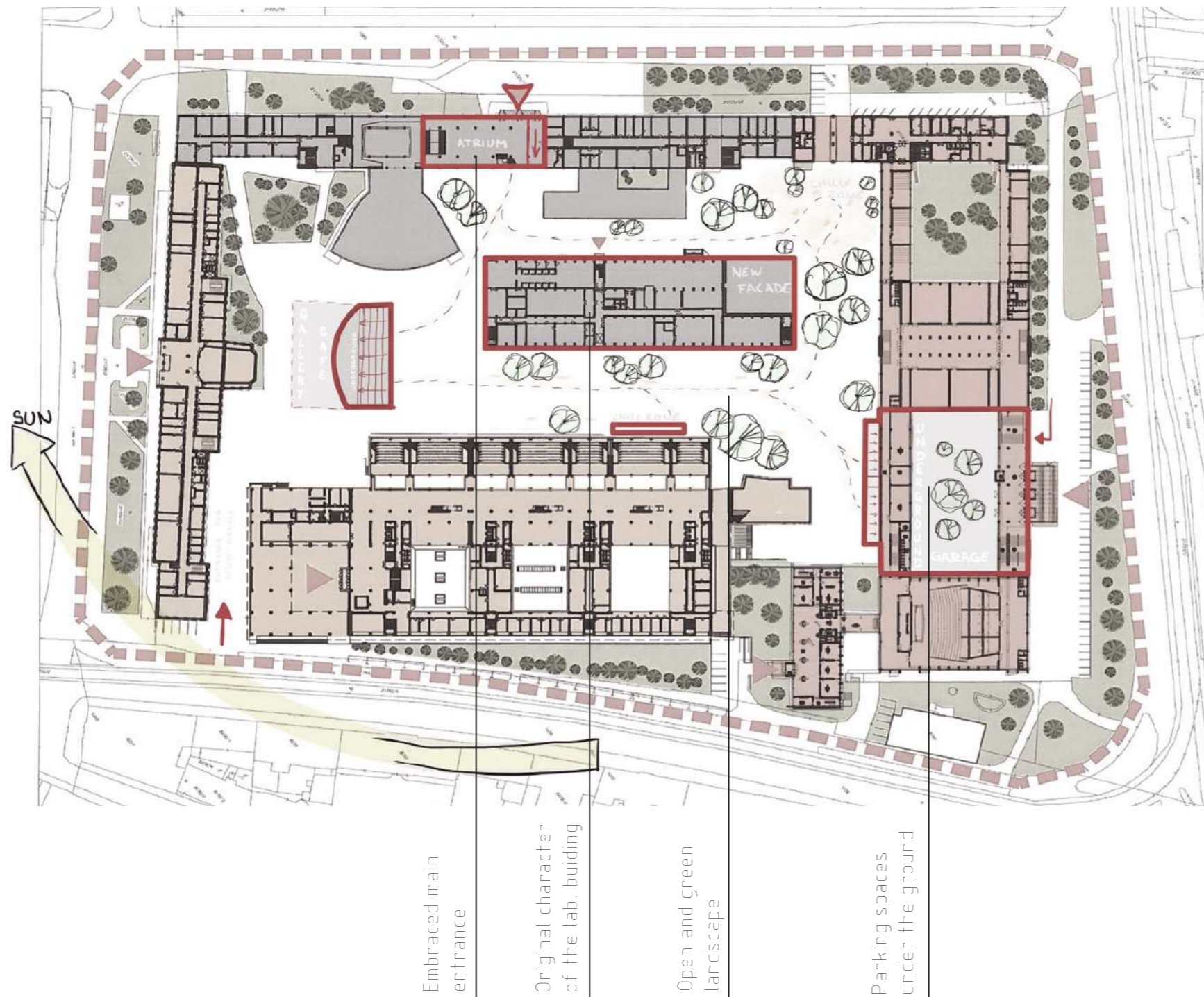
Campus STU Bratislava,
Slovakia



SITE PLAN

The area of the STU Campus is located in the capital city Bratislava, situated between Freedom Square (Námestí slobody), Kollar Square (Kollárovo námestí), Starohorská and Radlinská streets with links to important buildings in the area such as the Government, the Ministry of Transportation and Construction of the Slovak Republic, the National Bank of Slovakia, the Slovak Radio and Television building, the New Stage theater or the Design Center. The university courtyard includes more faculties, laboratory building and several temporary buildings. The arrangement of individual buildings opens an inner courtyard with a great potential for student life.

2km
1:100000



PRIMARY CONCEPT

The goal of the competition is to obtain ideas for a representative centre of STU with conditions such as economical aspects, possibility of phased-realization, innovativeness, cooperation of the professional and academic environment, communication with public.

An important part of our design is a sense of respecting the original existing architecture in the campus area. We aimed to refresh the existing space with adding a touch of contemporary architecture, focusing on functionality of every individual part of the campus.

Main steps were to move parking spaces under the ground without any parking space restriction in exchange for creating more open and green landscape. The attention was paid to embrace the original character of the laboratory building, which is in the centre of the area, with adding a new modern, yet effortless, facade.

Most of the student life takes place in the inner block which is connected to public through passage next to the main entrance. Main entrance is embraced much more than the existing one, but still respects the original building.



Cafebar

Entrance,
Passage,
Lobby

Red Element
- Relax Spot

Laboratory
Building
Renovation

Chillzone

Underground
Garage

PHASES

Project is designed with the possibility of realization in different phases where the sequence of individual phases is optimal, based on different aspects and preferences, such as realization pace (due to prefabrication level and more), economical parameters or the amount of impact to the area. One of the main priorities was prefabrication and following modular realization, so that the installation does not disrupt the schooling and service in the campus. Many elements in our design are modular, detachable and relocatable.

AERIAL PERSPECTIVE

PROJECT IDEA



Technical education primarily goes with innovative mind, which is preceded by brainstorming. We as students of technical university such as STU work with this mindset and attitude every day. This led us to leave many folded or crumpled paper behind us. And the mentioned crumpled paper is just that essence of every project, as well as this Inspireli one.

The thought of folded crumpled paper was used as the main element of the whole campus innovation, as it connects students not only across faculties STU, but across the whole world of technical field.

LABORATORY BUILDING

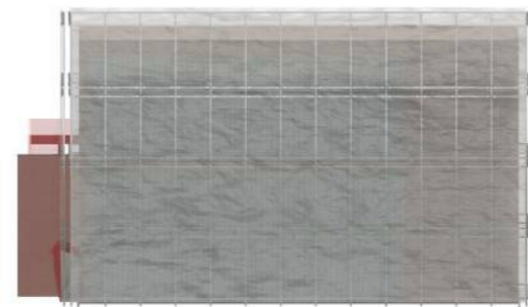
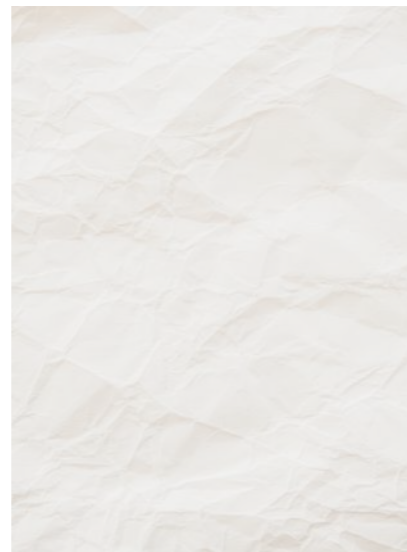


LABORATORY BUILDING BACK VIEW, PARK, RELAX ZONE

LABORATORY BUILDING INNOVATION

The existing laboratory building has its specific location in the campus centre, its architectural history and certain system of laboratories by itself, so the decision was made not to demolish it but renovate it. The renovation would be in the interior including laboratories, which would need to be made by professionals in field focused on chemical engineering. We designed the exterior, with well paid attention to the building history, using a new element connected to the whole identity of the project. The facade is designed as new construction surrounding the original building in order to blur what lies behind and bring a piece of an abstraction. The material allows enough light to go through into the building but at the same time creates a great cover. As a whole it brings a feeling of purity, simplicity and airiness into the inner courtyard.

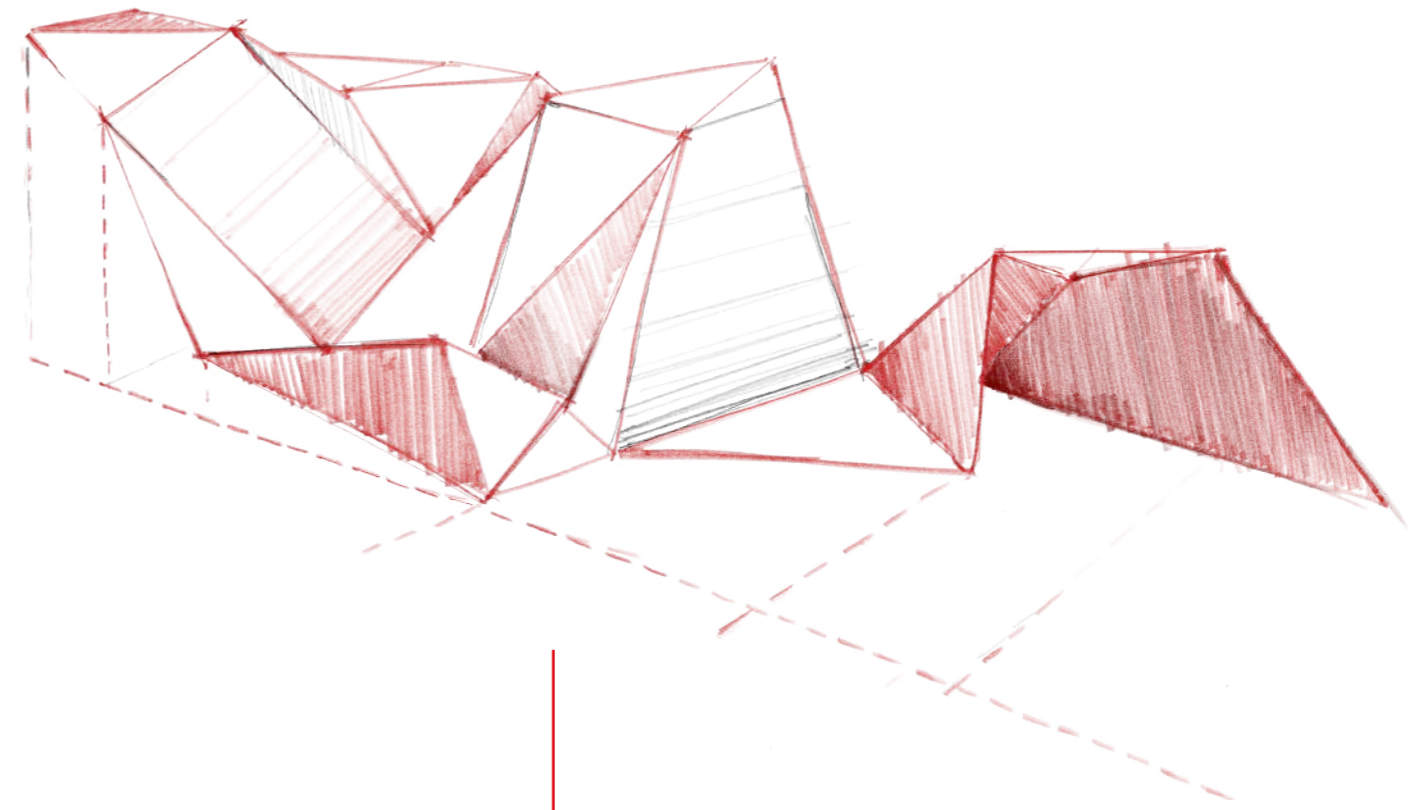
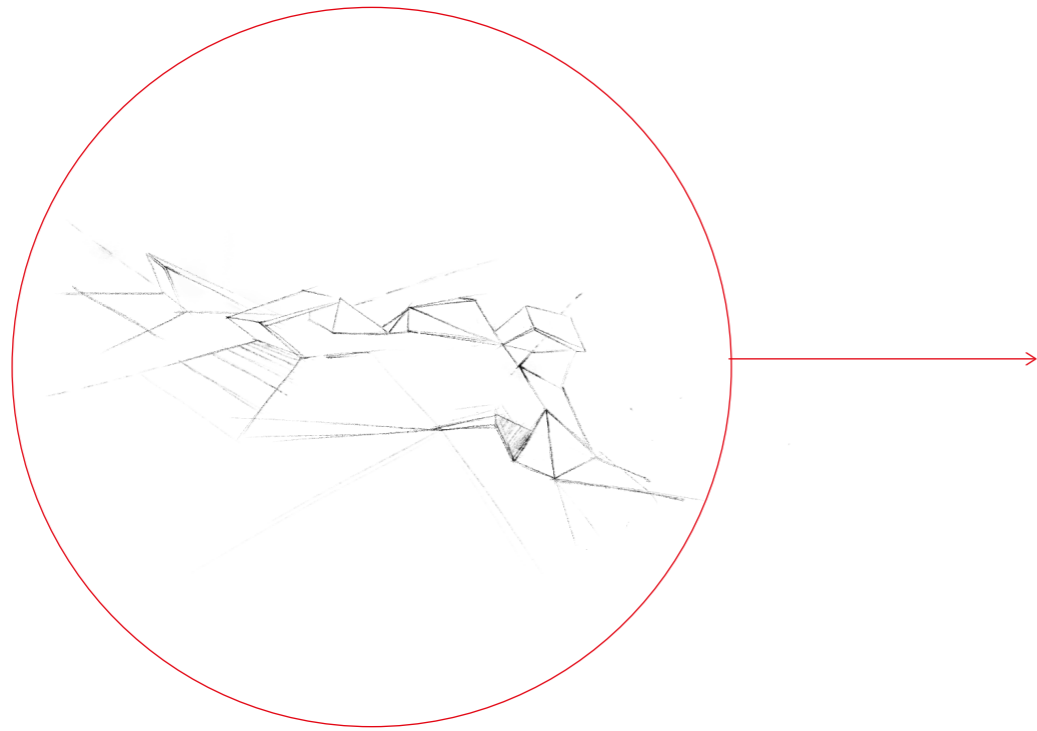
Material solution:
galvanized steel, anchorage,
glass reinforced plastic



ENTRANCE, PASSAGE, LOBBY

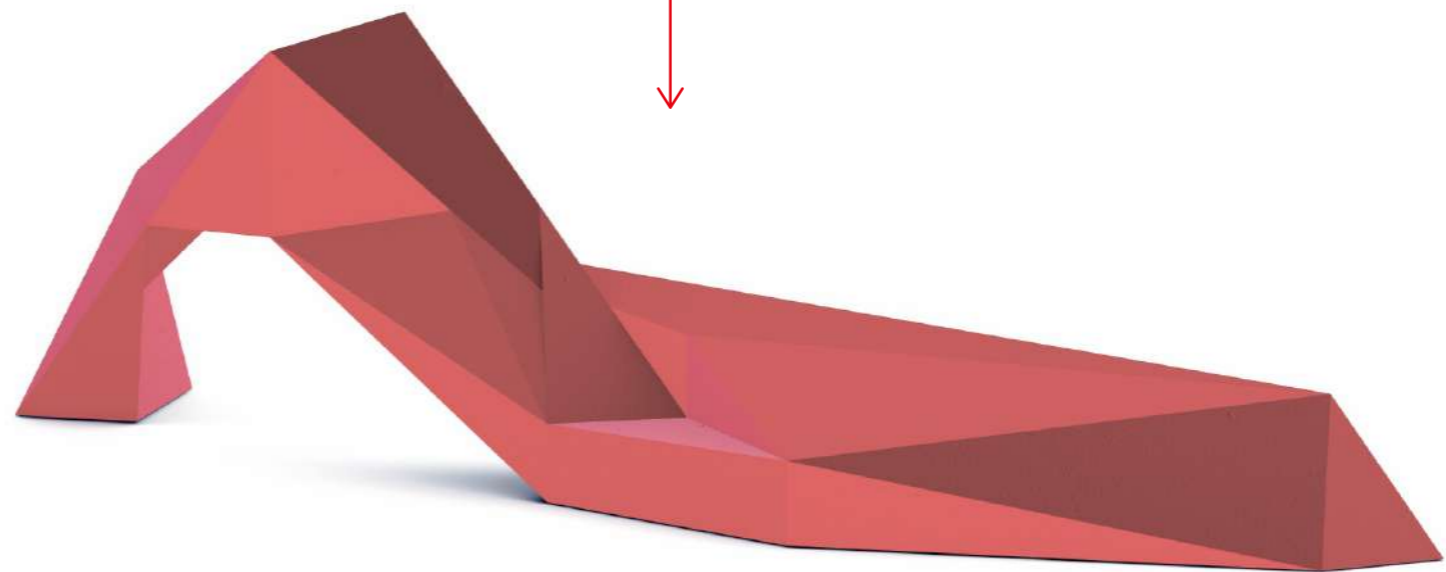


BUILDING ENTRANCE, PASSAGE, LOBBY



Folded paper is part of the whole areal, our goal was to bring a part of the inner courtyard in the public space. This would create a clear legible entrance. Mediator of such vision is the red folded paper from which we gradually shape a form used as exterior furniture, highlighting entrance and more.

Red thread which is passed by every student and visitor right at the entrance, leading into and through the whole campus.

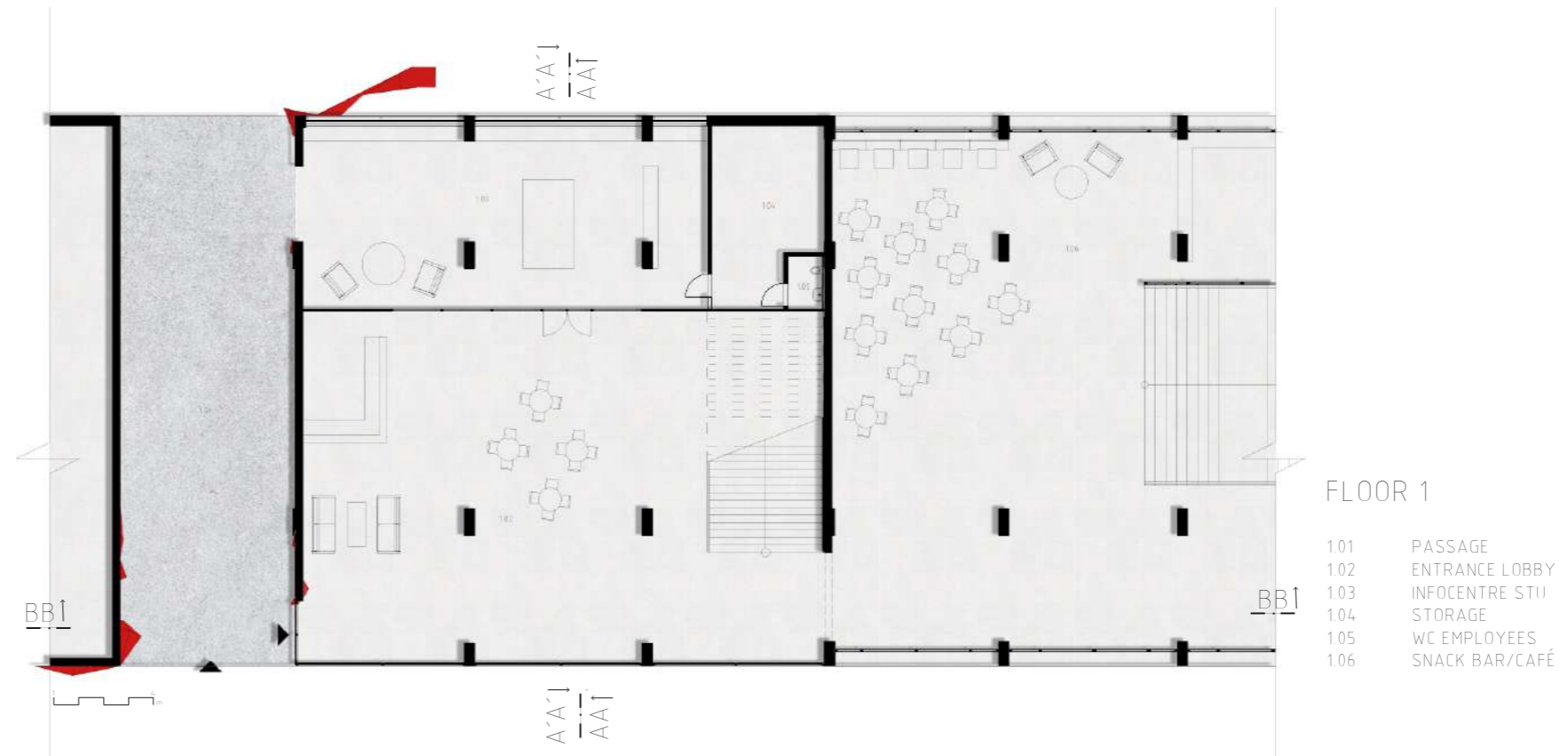


LOBBY, ENTRANCE, PASSAGE

Very important aspect in creating a new lobby and entrance was to designing a more dominant and legible part of the building as well as to connect the inner campus straight into the public spaces of the city. This was solved by creating a passage that goes right through the existing building, where you can let yourself be led by the red folded paper element into the campus.

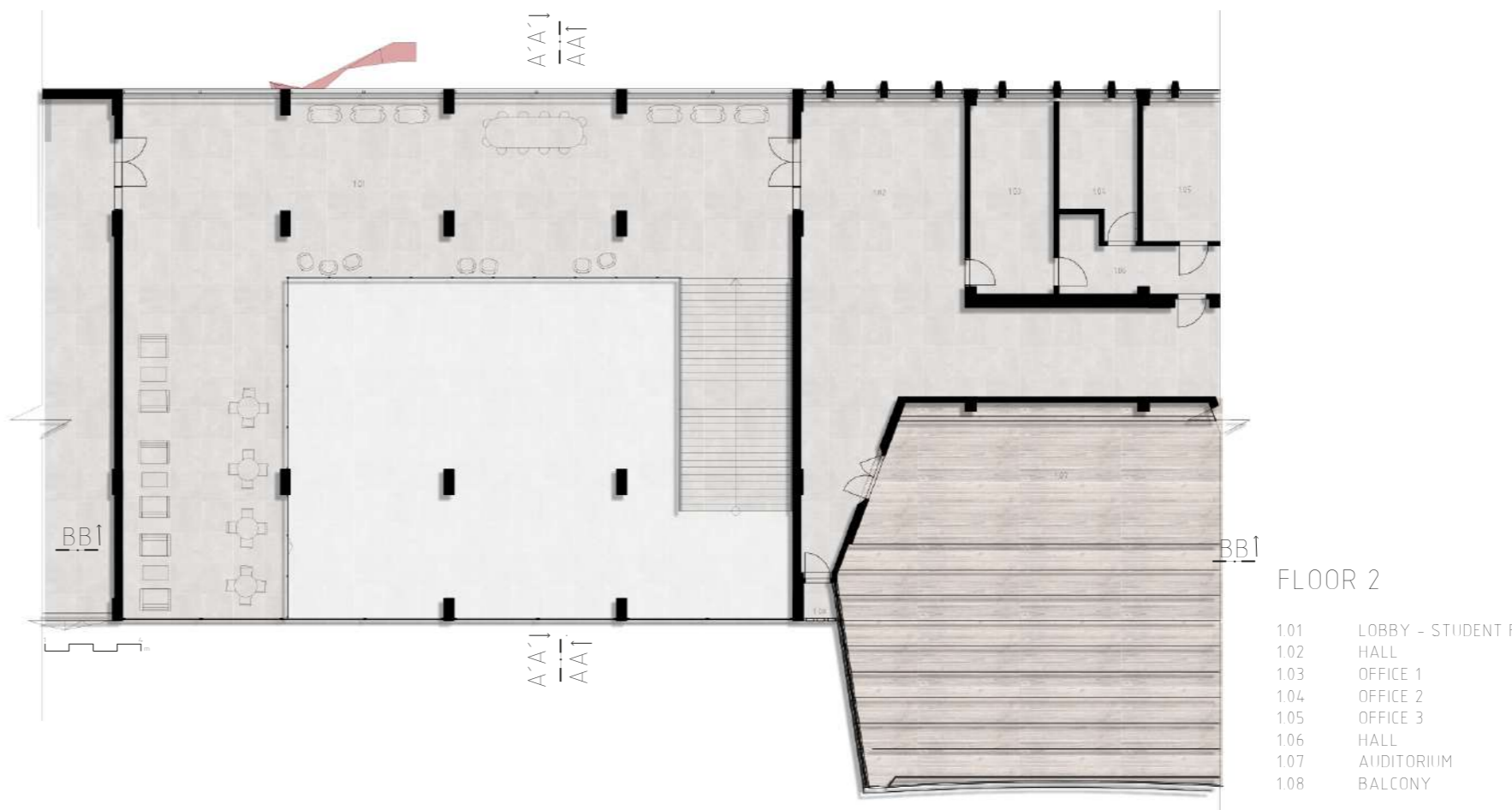
The whole lobby follows up the original building, leaves the auditorium rooms, which are a great dominant elements of the already existing architecture. The project respects the current construction of the building as well as the placement of staircase.

Lobby is designed as an open space with a possibility of placing a Snackbar next to it.



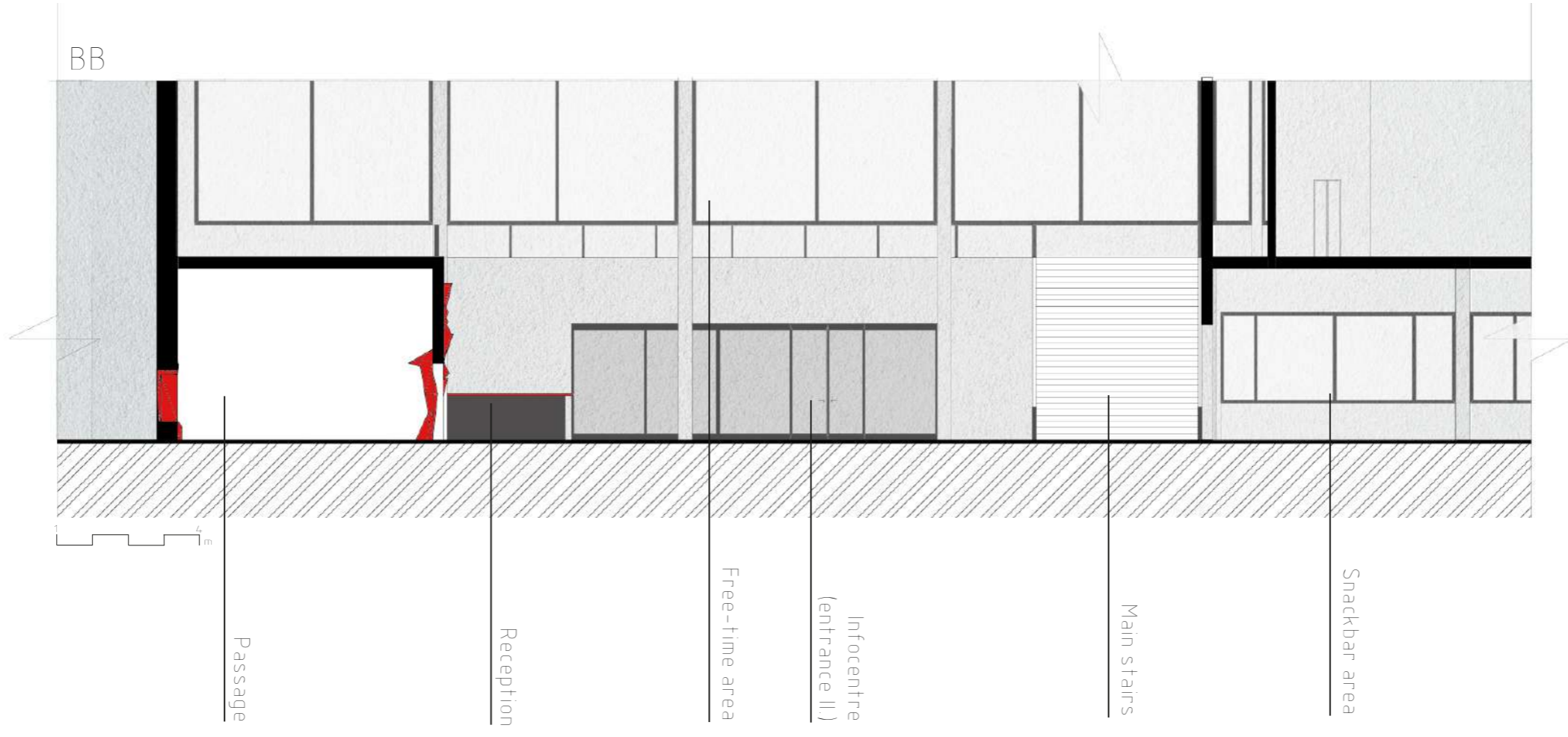
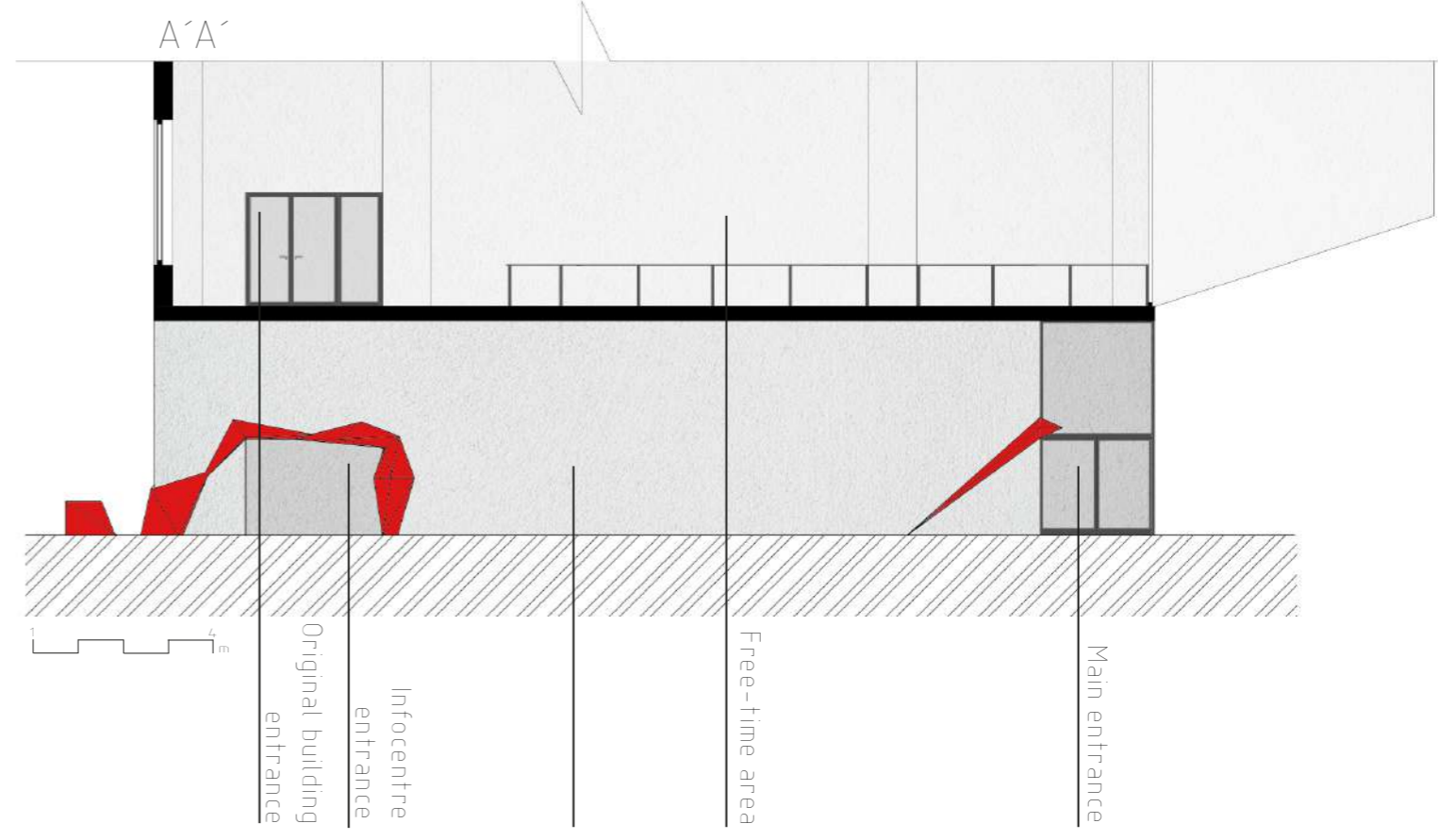
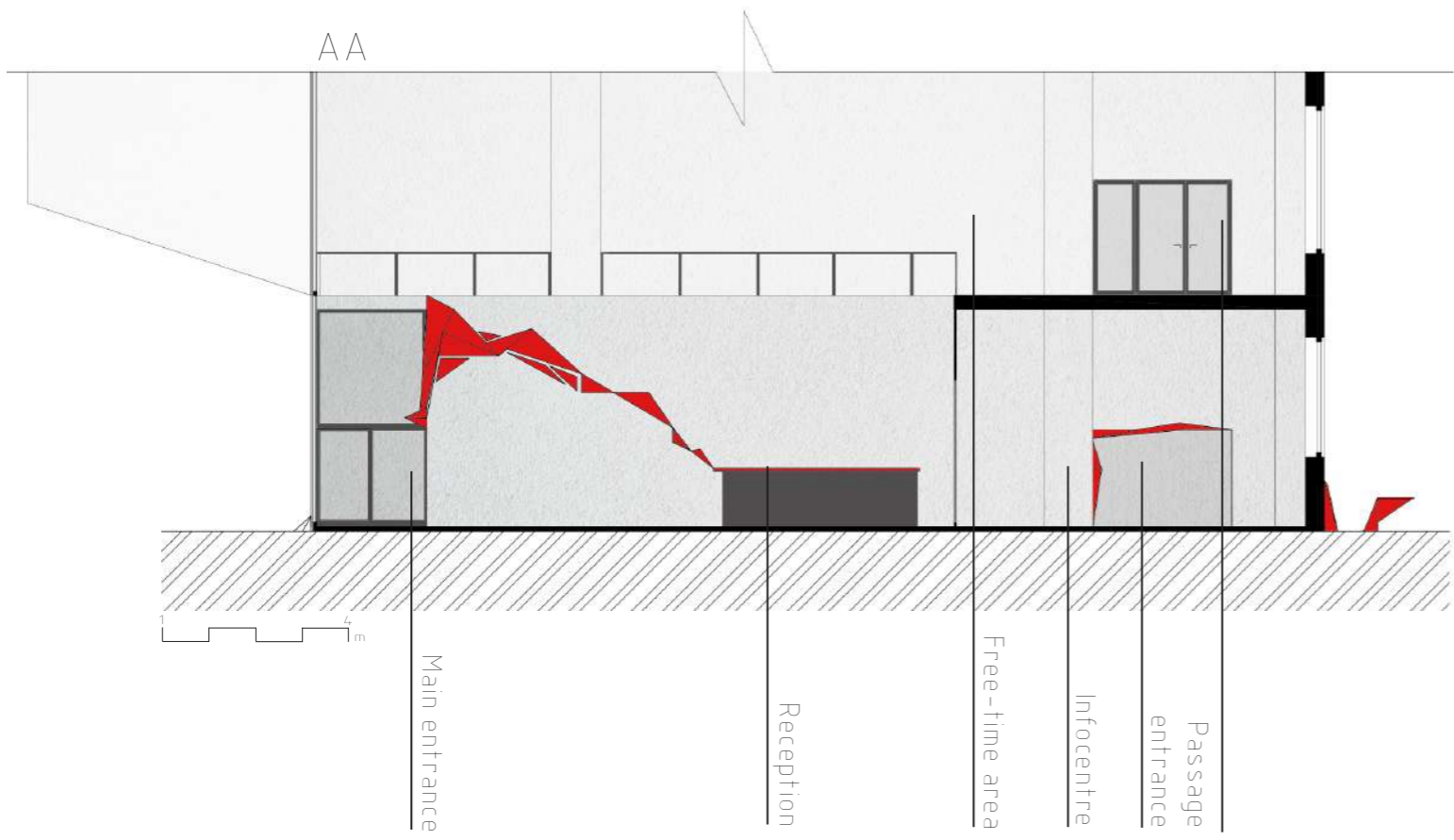
FLOOR 1

- 101 PASSAGE
- 102 ENTRANCE LOBBY
- 103 INFOCENTRE STU
- 104 STORAGE
- 105 WC EMPLOYEES
- 106 SNACK BAR/CAFÉ



FLOOR 2

- 101 LOBBY - STUDENT FREETIME AREA
- 102 HALL
- 103 OFFICE 1
- 104 OFFICE 2
- 105 OFFICE 3
- 106 HALL
- 107 AUDITORIUM
- 108 BALCONY



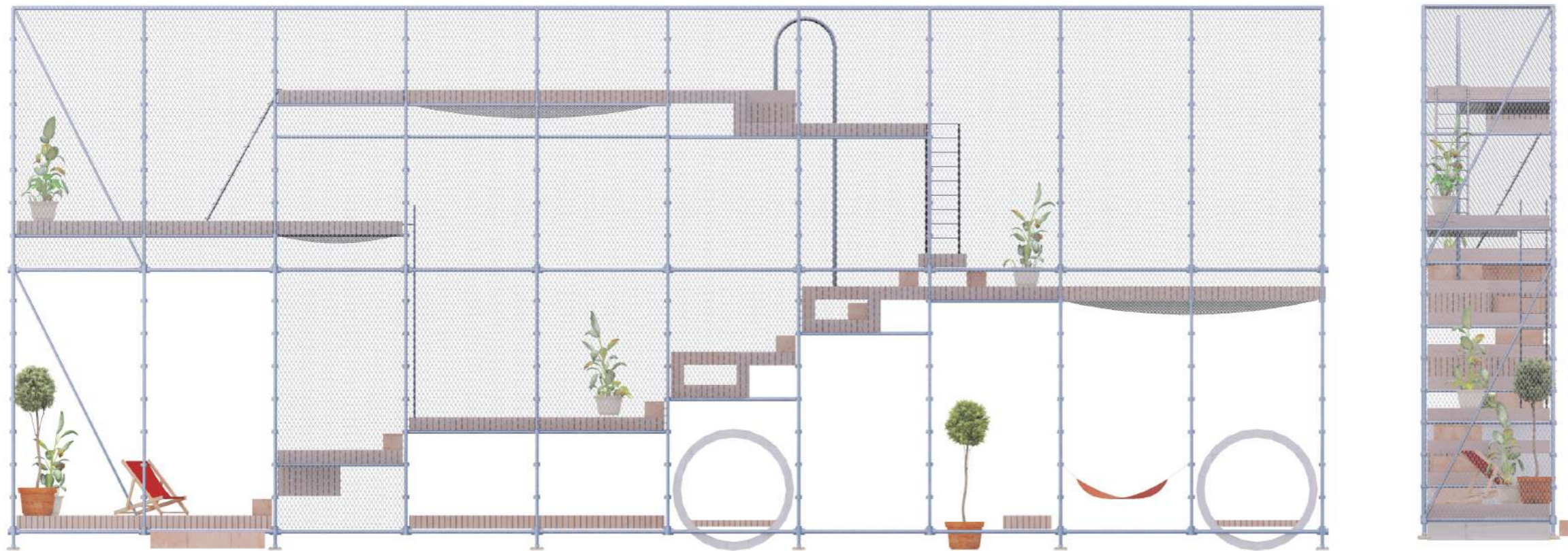
CHILL ZONE



CHILL ZONE



AXONOMETRY CHILL ZONE



SOUTH & WEST ELEVATION

It is a very simple modular prefabricated construction, which does not interfere with any other building due to its lightness. The construction is mirroring the opposite one on the laboratory building, with just slight change of leaving out the covering reinforced glass material. It is filled with individual seating places for relaxation.



CHILL ZONE INTERIOR

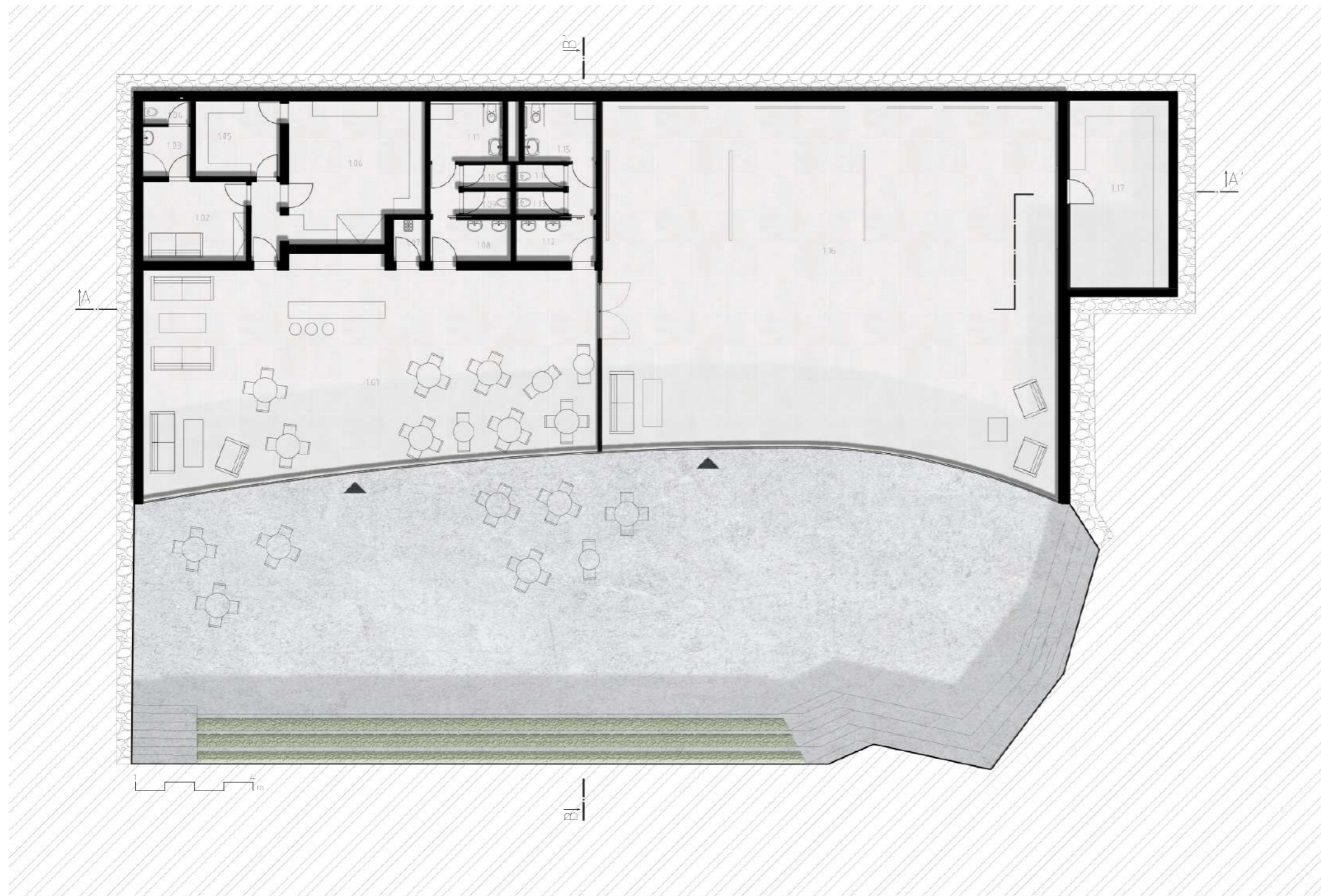
ALLEY



CAFEBAR & GALLERY



CAFEBAR EXTERIOR

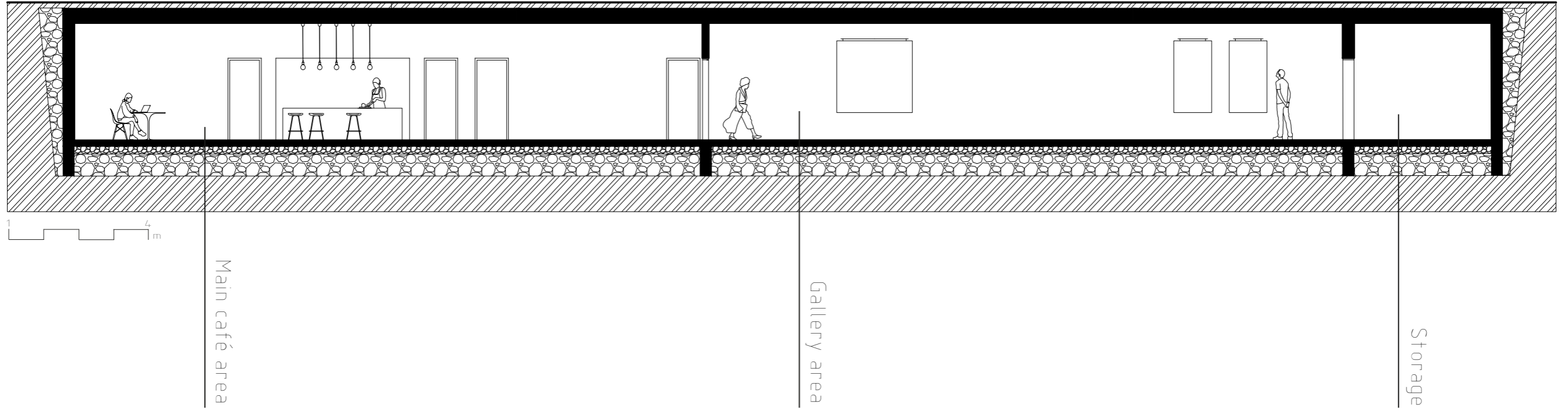


The primary idea was to embed the construction into the ground in order to avoid disruption of free view corridor. There is a cafebar included in the design, as well as a gallery, a multifunctional space for schooling, lecturing and very important element of an exterior terrace, where mentioned activities can be held too. For such opportunity, there is a staircase formed into seating to allow appropriate sight.

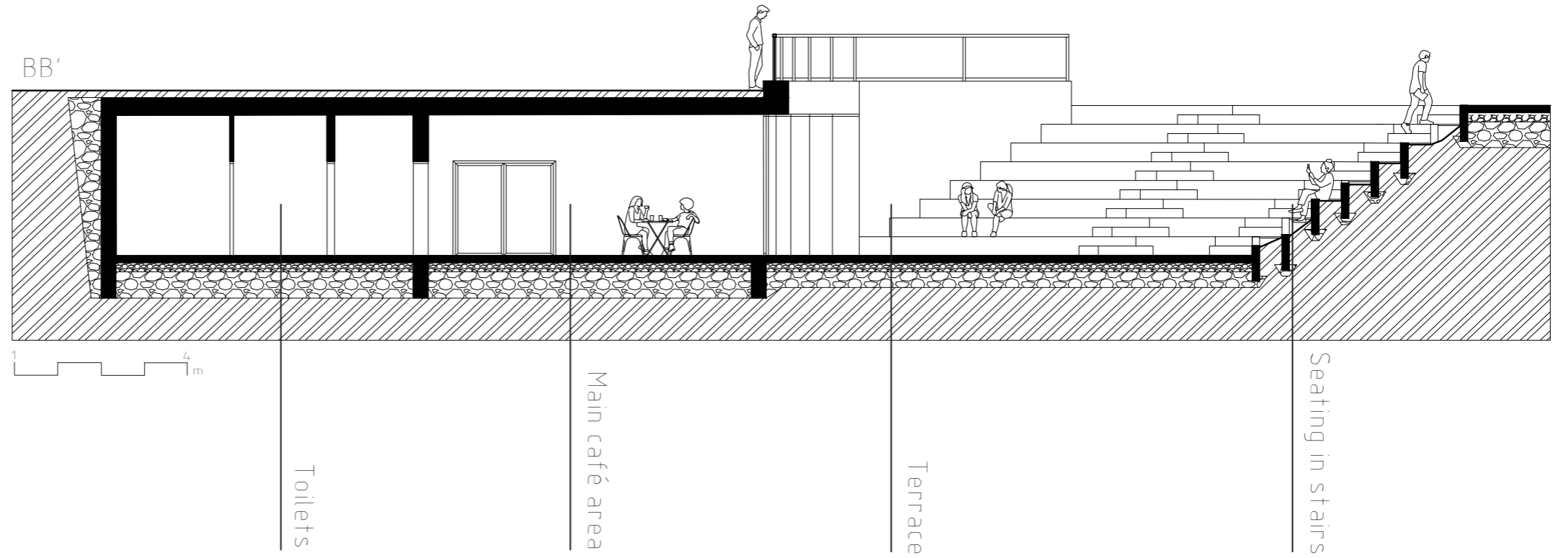
- 1.01 MAIN CAFÉ AREA
- 1.02 EMPLOYEE ROOM
- 1.03 SHOWER FOR EMPLOYEES
- 1.04 TOILETS FOR EMPLOYEES
- 1.05 FOOD WAREHOUSE
- 1.06 KITCHEN
- 1.07 CLEANING ROOM
- 1.08 WASHROOM WOMEN
- 1.09 TOILET WOMEN 1
- 1.10 TOILET WOMEN 2
- 1.11 TOILET HANDICAP (WOMEN)
- 1.12 WASHROOM MEN
- 1.13 TOILET MEN 1
- 1.14 TOILET MEN 2
- 1.15 TOILET HANDICAP (MEN)
- 1.16 EXHIBITION SPACE
- 1.17 STORAGE

FLOOR PLAN CAFE BAR & GALLERY

AA'



BB'





CAFEBAR INTERIOR

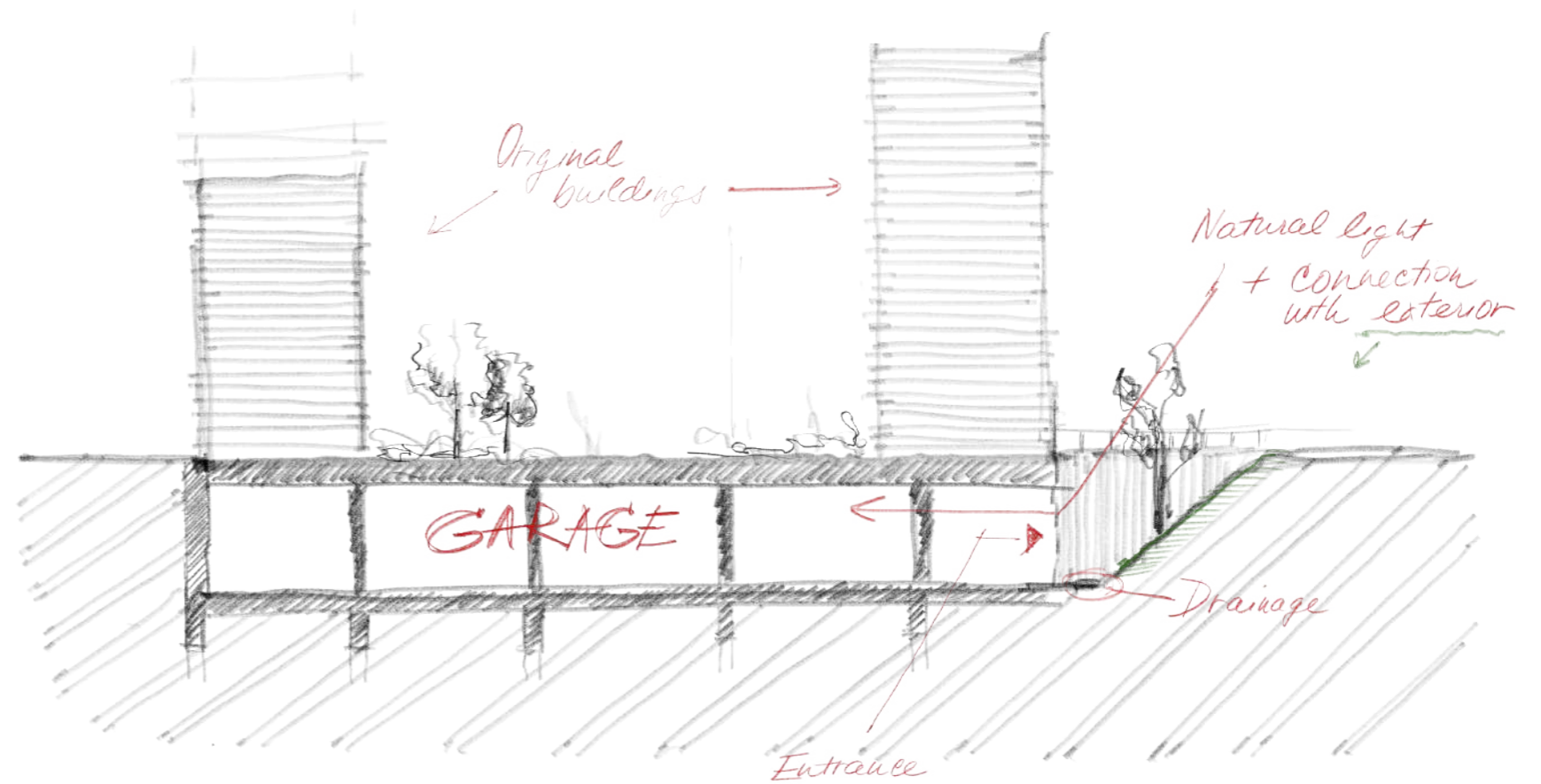
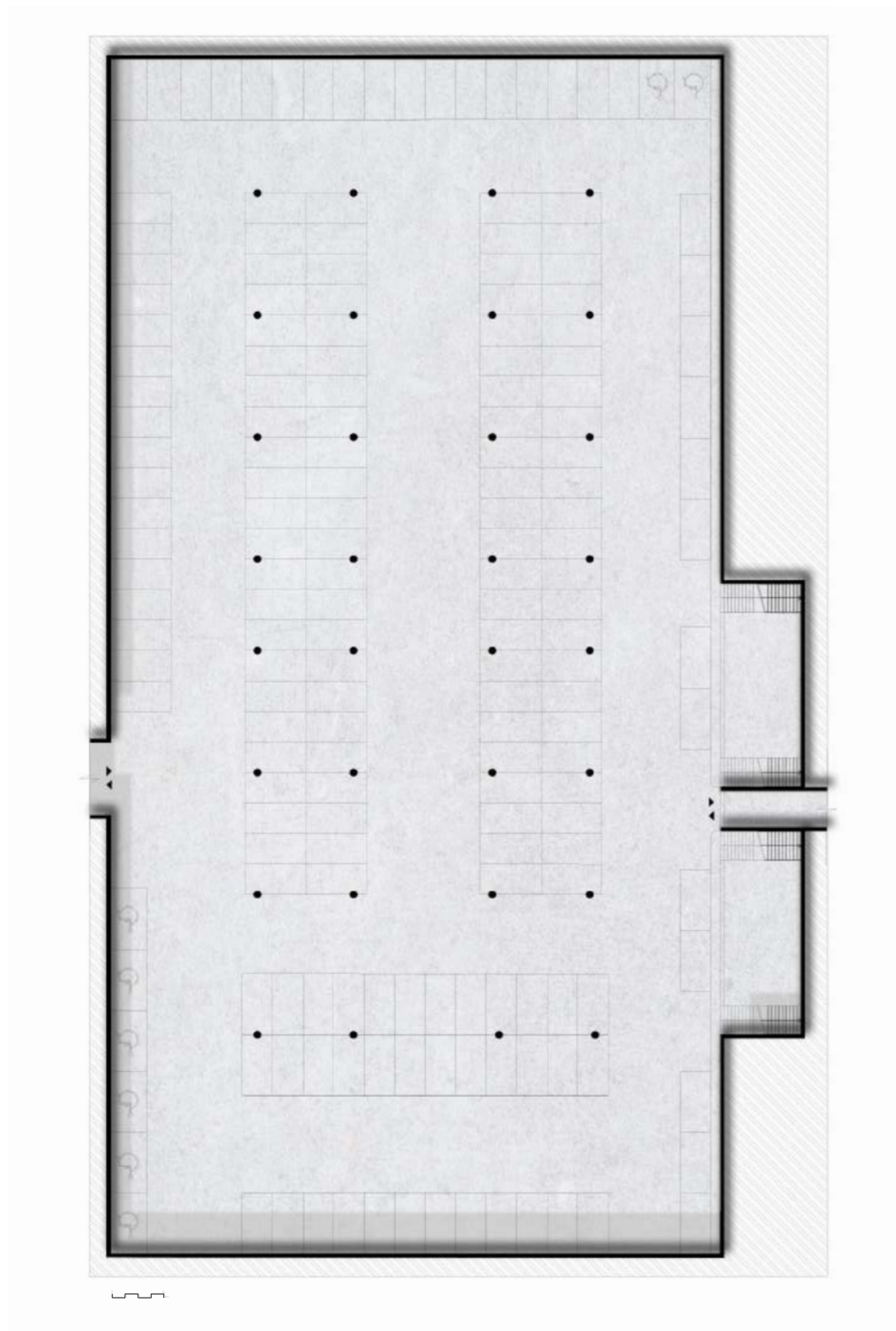
UNDERGROUND GARAGE



UNDERGROUND GARAGE

UNDERGROUND GARAGE

The construction of the garage is connected to existing parking routes as well as to the existing underground space. We added one more entrance into the garage, going from the outside parking spaces in front of the faculty right into the newly created underground garage.





CTU FACULTY OF CIVIL ENGINEERING
PROGRAMME ARCHITECTURE AND CIVIL ENGINEERING
BACHELOR, 2ND YEAR