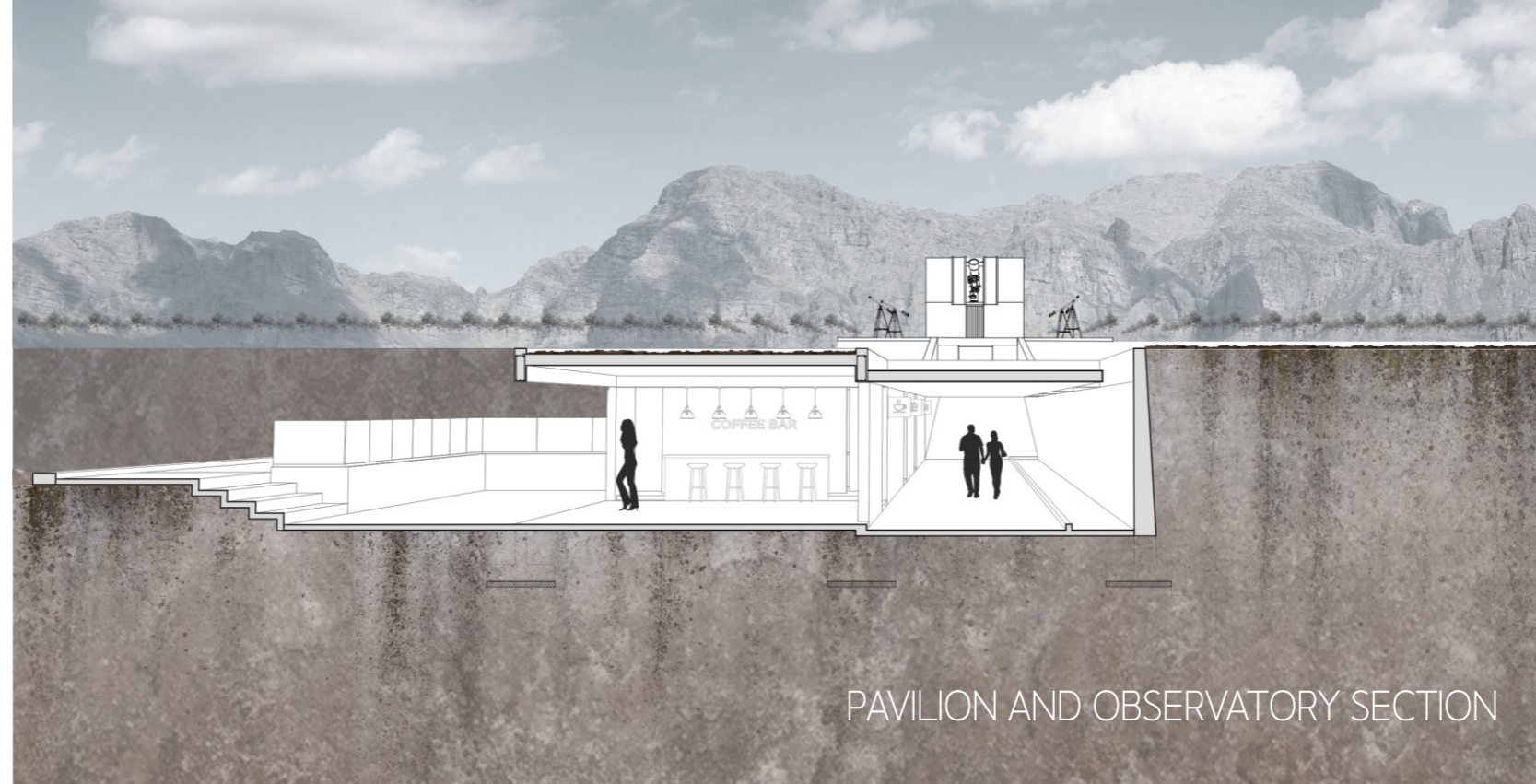
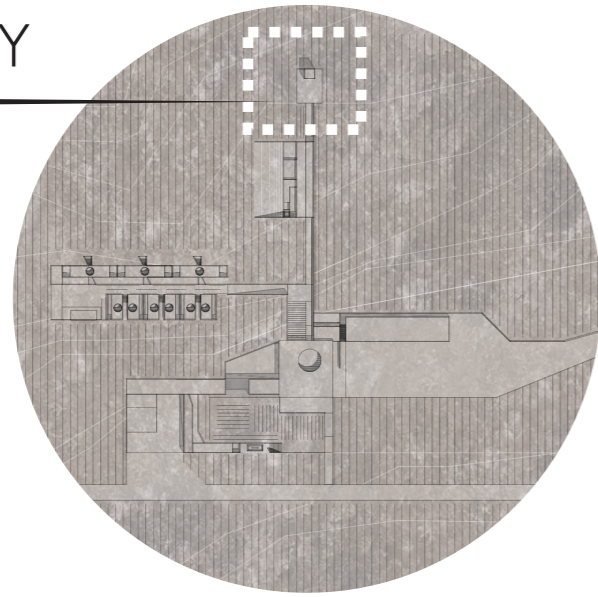
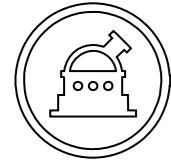
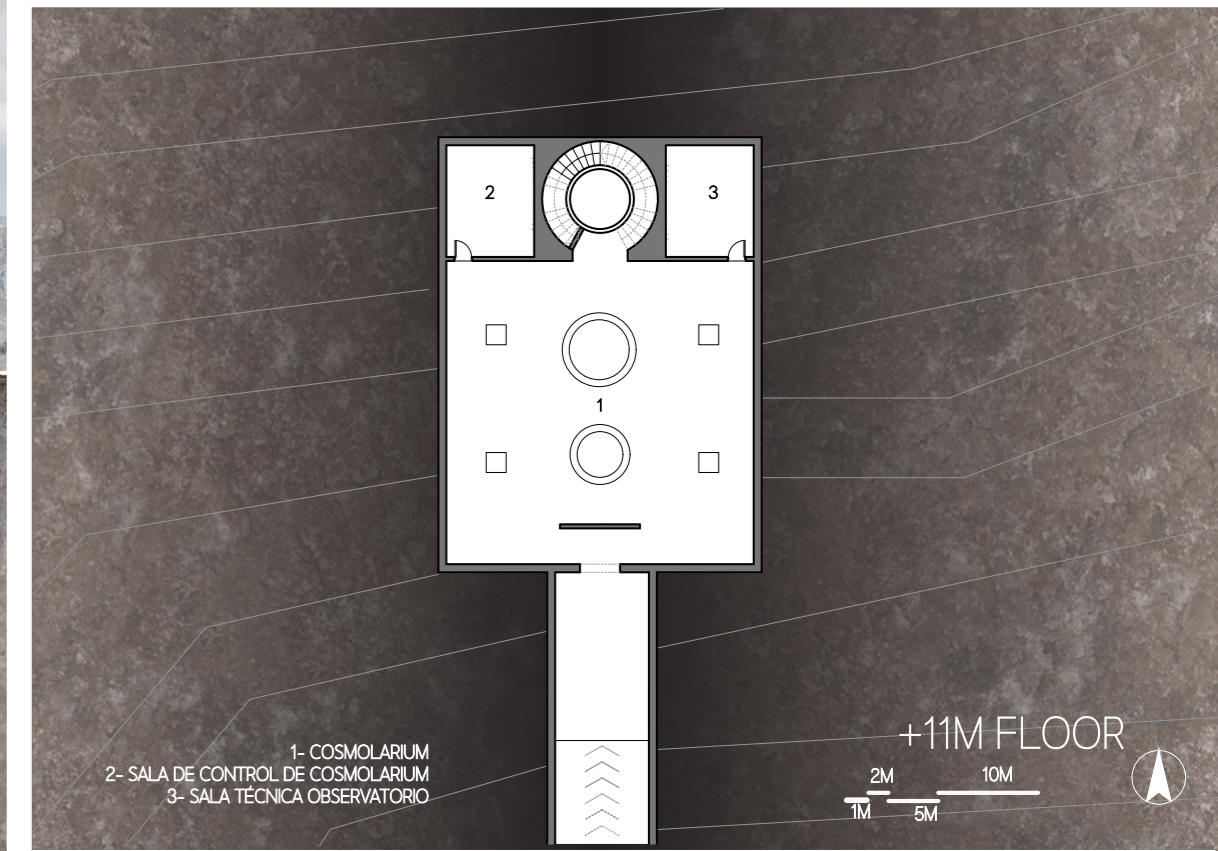


ASTRONOMICAL OBSERVATORY

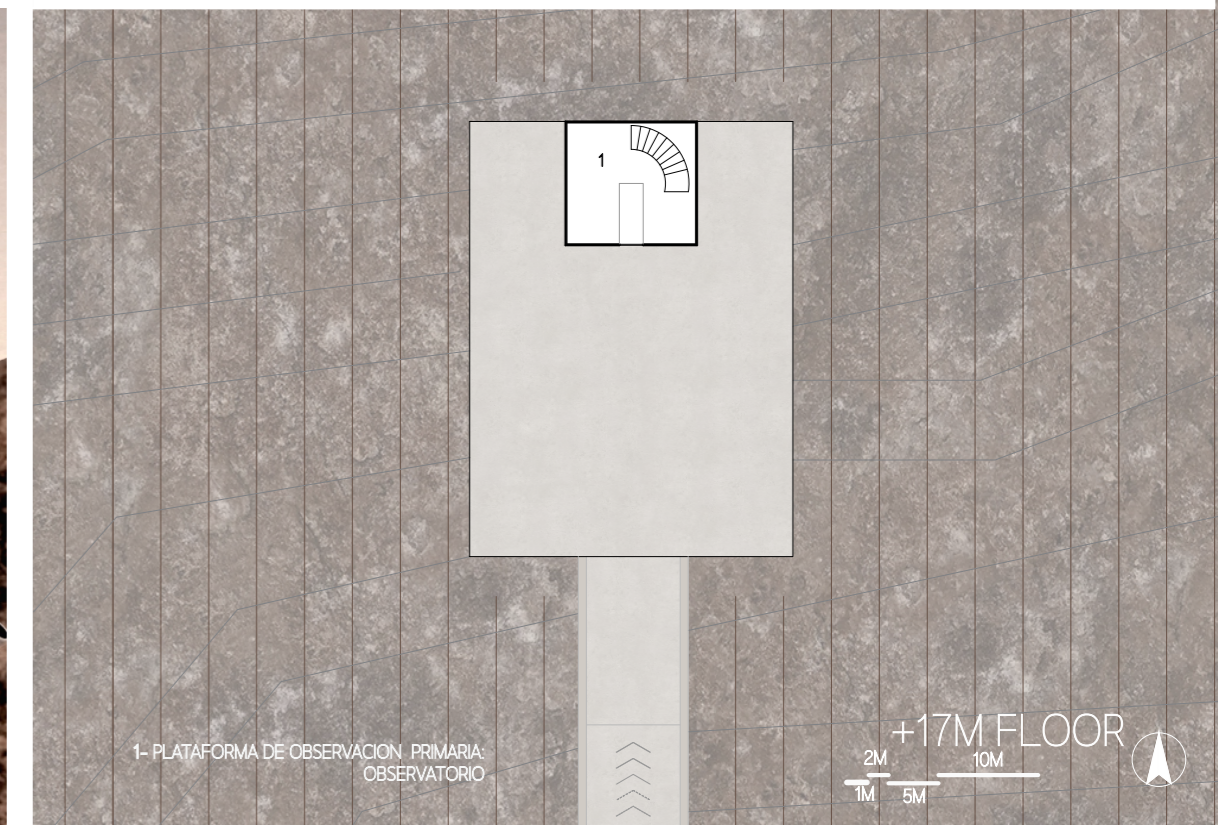


PAVILION AND OBSERVATORY SECTION



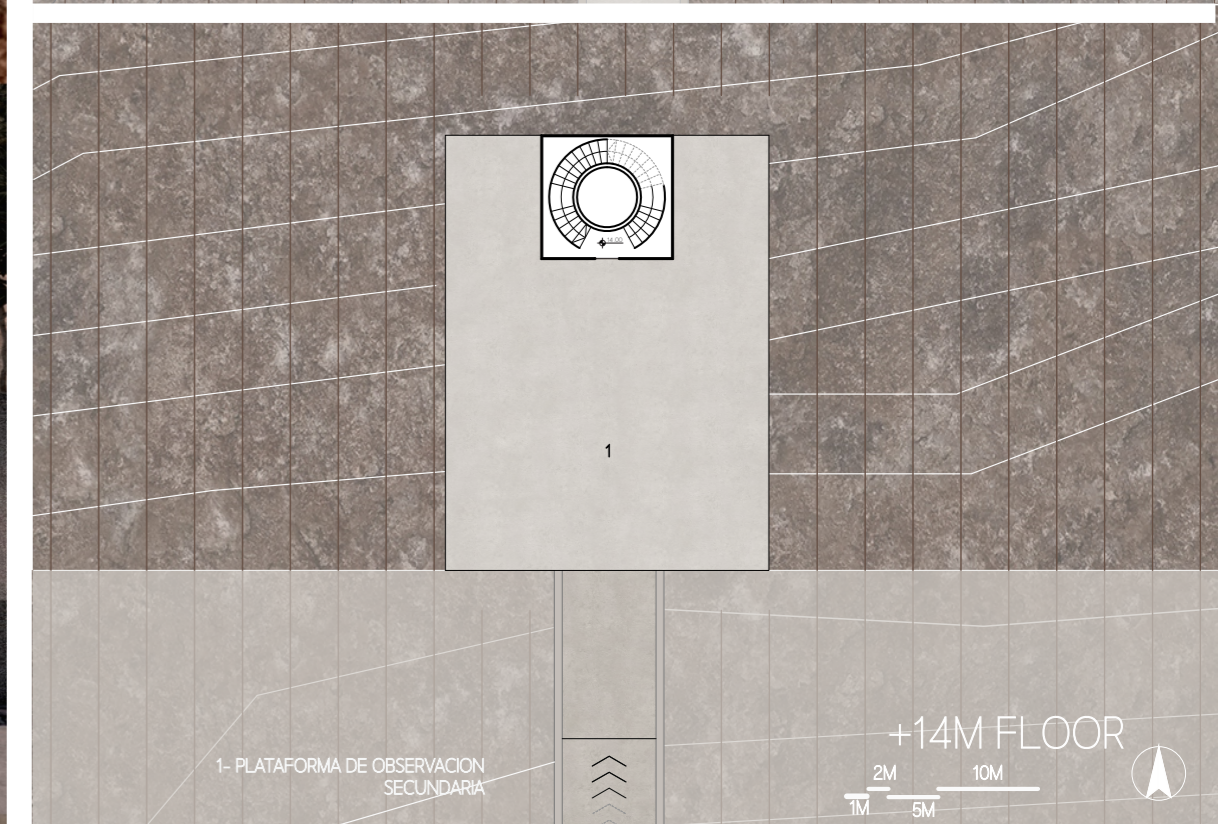
1- COSMOLARIUM
2- SALA DE CONTROL DE COSMOLARIUM
3- SALA TÉCNICA OBSERVATORIO

+11M FLOOR



1- PLATAFORMA DE OBSERVACION PRIMARIA
OBSERVATORIO

+17M FLOOR



1- PLATAFORMA DE OBSERVACION
SECUNDARIA

+14M FLOOR