

林中鄰

Forest Village

Design Concept

The US military dormitory located on the Yangming Mountain was damaged and severely damaged after the US military retreated after 1978 due to lack of maintenance. As the concept of preservation of historical-cultural relics has improved in recent years, some buildings that have not been used for more than ten years have been restored to the sky, and more are historical buildings that have not been dealt with and lack maintenance.

The area around Shanzai in Yangmingshan, Taipei is a small alluvial plain on Yangming Mountain, so a large number of residents live here, of which the current population is mainly the elderly, followed by the students and faculty of the Chinese Cultural University.

The land is scarce and also makes the development of public space quite limited and restricts the space for residents to move in this area. The US military dormitory occupies a considerable area here. If the building of the US military dormitory is properly used, the problem of insufficient space can be alleviated, and more activities can be created to condense the sense of community.



Design Issue

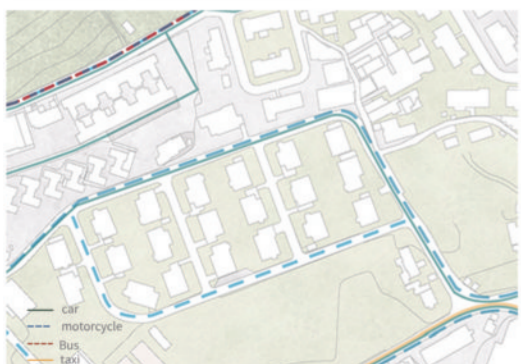
Current status analysis



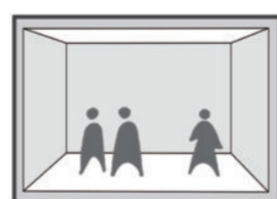
Population density



Vehicle movement

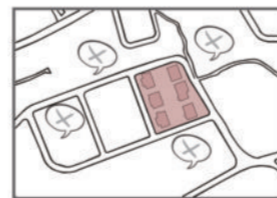


Land zoning



NO outdoor

Whether it is schools, nursing homes, residents, etc. nearby, leisure activities take place indoors, and there is little contact with various groups



Claustrophobic environment

There are fewer public facilities and parks around, which makes it impossible for all ethnic groups to connect with each other and become more and more alienated



Poor environment

As the road has not been repaired for a long time, people and cars share the same road, which is prone to danger, and it is even more unfriendly to people with limited mobility



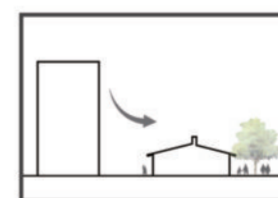
Community integration

Cooperate with schools, nursing homes, and residents in the U.S. military dormitory park, and use the resources of the school to create more activities with residents and nursing homes to consolidate the sense of community belonging and identity of local



Overgrown

The US military dormitory has not been repaired for a long time, causing the surrounding weeds to grow very high, and the street lights at night are also dim, prone to danger



Second living space

The park can be the second home of nearby residents, come here to relax and chat with others to watch performances, enrich your life and enhance the surrounding emotions



Keep old trees

The surrounding trees have been planted since the time of the US Army. After many years, the trees have been preserved



Openness

The park can get closer to the residents of nearby Curries, open the fence and replace the fence with trees to increase openness



	3071P
	6321P
	OW20 1P
	7102P

Old Building Retrofit

Concept and strategy

- Existing materials
- New materials

Architecture Exploded Construction

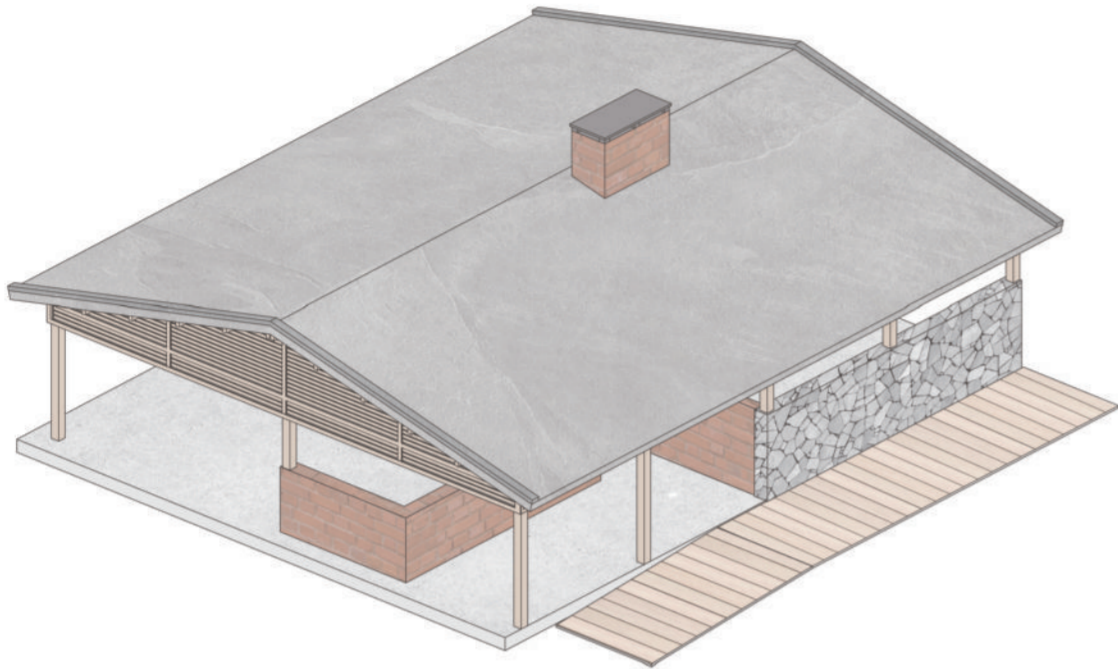
The building in this design all reconstruct with the existing materials, some parts of materials are used from local materials.

Construction Material

List of building materials in this design.

Existing building preservation and reconstruction

In this design we retain most of the original US military dormitory, especially the more distinctive hollow brick and wooden structure as the main preservation items. The remaining damaged parts are repaired through other remaining materials or refurbished.



Rebirth of old buildings

According to the different functions of each building and the damage status of the building, determine the appropriate modification method, which also adds some new materials that didn't exist before, and the newly added materials use local construction methods and easily available materials to ensure the convenience of future maintenance.

Roof

Roof Construction

Bamboo Lattice Panels

Construction / Platform

Concrete

Concrete

Wood

Wood

Bamboo

Wood

Bricks

Wood

Stone

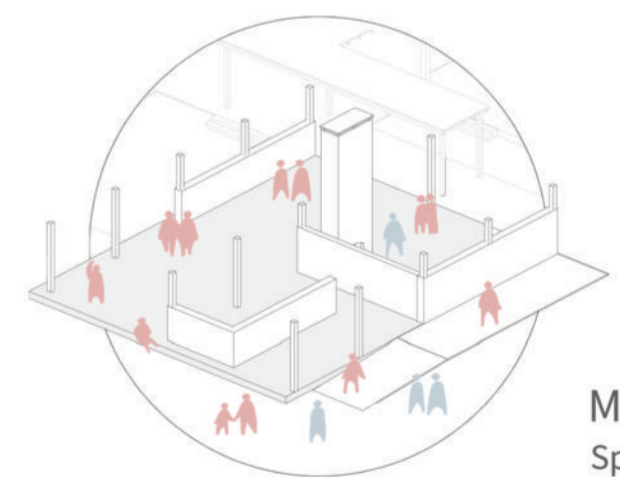
Bricks

Wooden deck

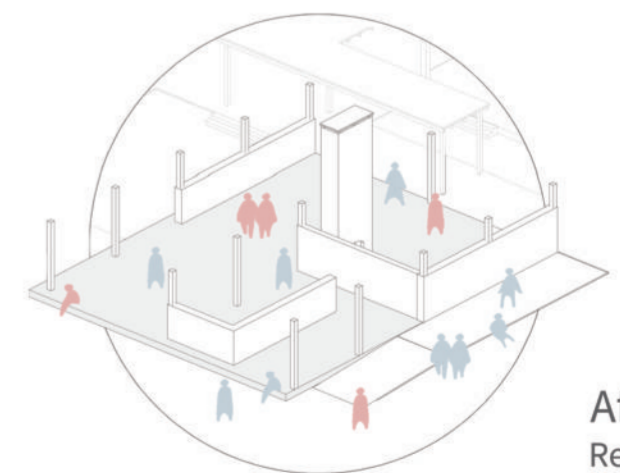


Activity Timeline

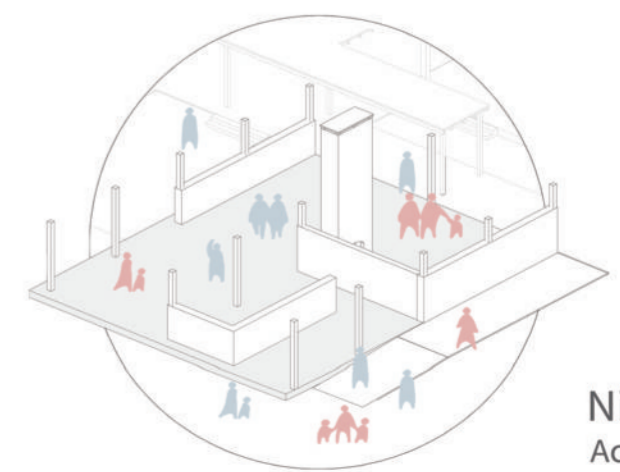
- Student
- Resident Elder



Morning Sport / Rest



Afternoon Rest / Activity



Night Activity

Public space activity perspective

Old Building Retrofit

Concept and strategy



Grass, Washed stone pavement

Keep the characteristics of the front and rear courtyards of the US military dormitory. In addition to the grass, the washing stones are also used in several places to become a performance space for students and residents.



Footpath

The environment of the original base where people and vehicles are traveling together is very dangerous to nearby residents and students. Retreat 2m into a pedestrian trail to create a safe walking environment.



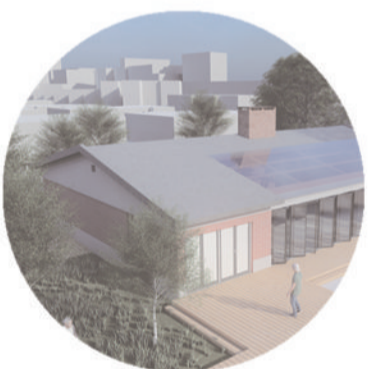
Wooden pallet trail

Use wooden pallets to connect the various areas, raise 30 cm, use stairs and low walls to create interesting spaces, and set up many ramps to facilitate the elderly to walk, and set up a ceiling above to prevent inconvenience caused by wet weather.



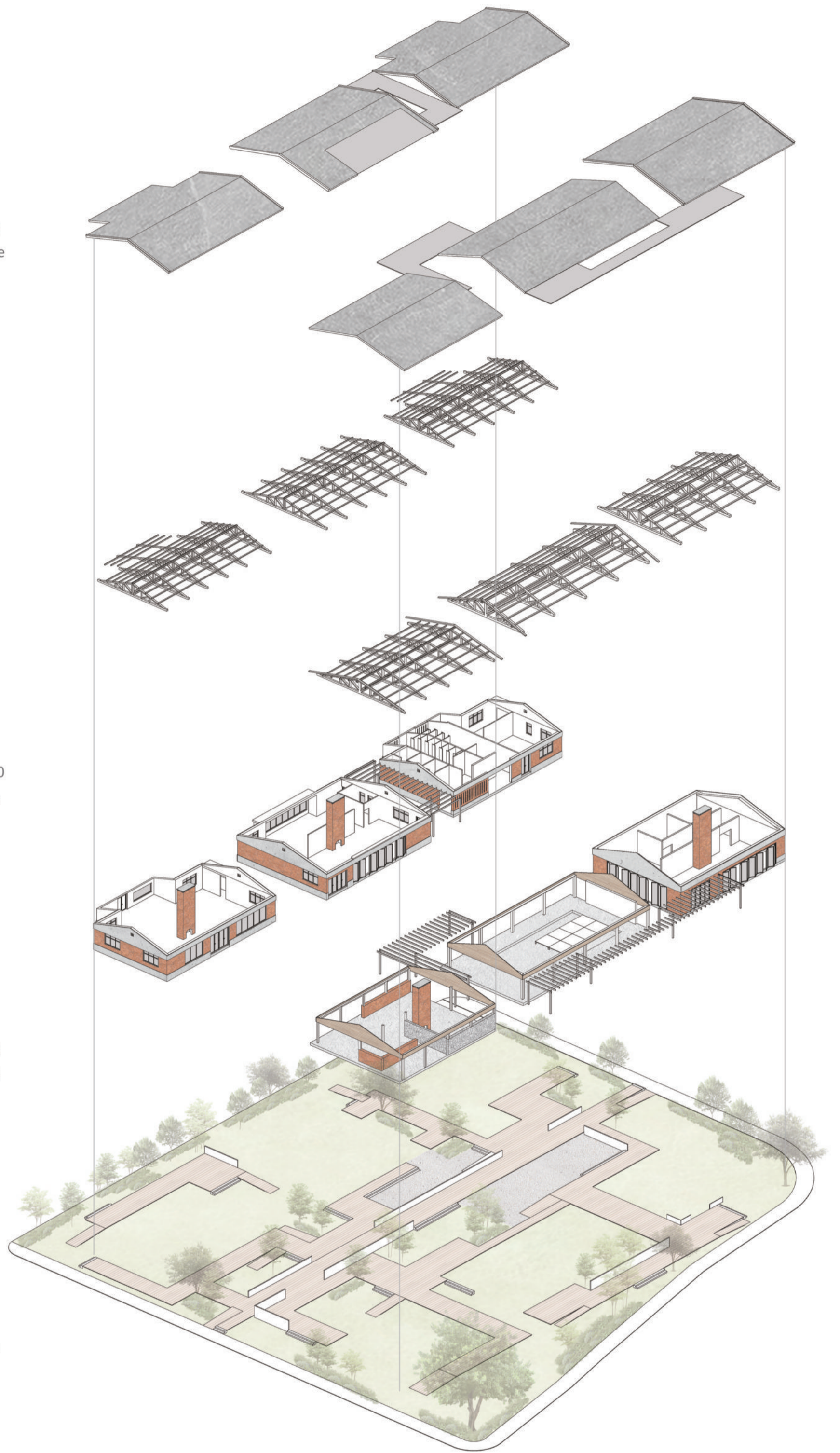
Park environment

The original overgrown base was transformed into a part of the environment by retaining the old tree species. The six US military dormitories were also remodeled to become a favorite place for residents.



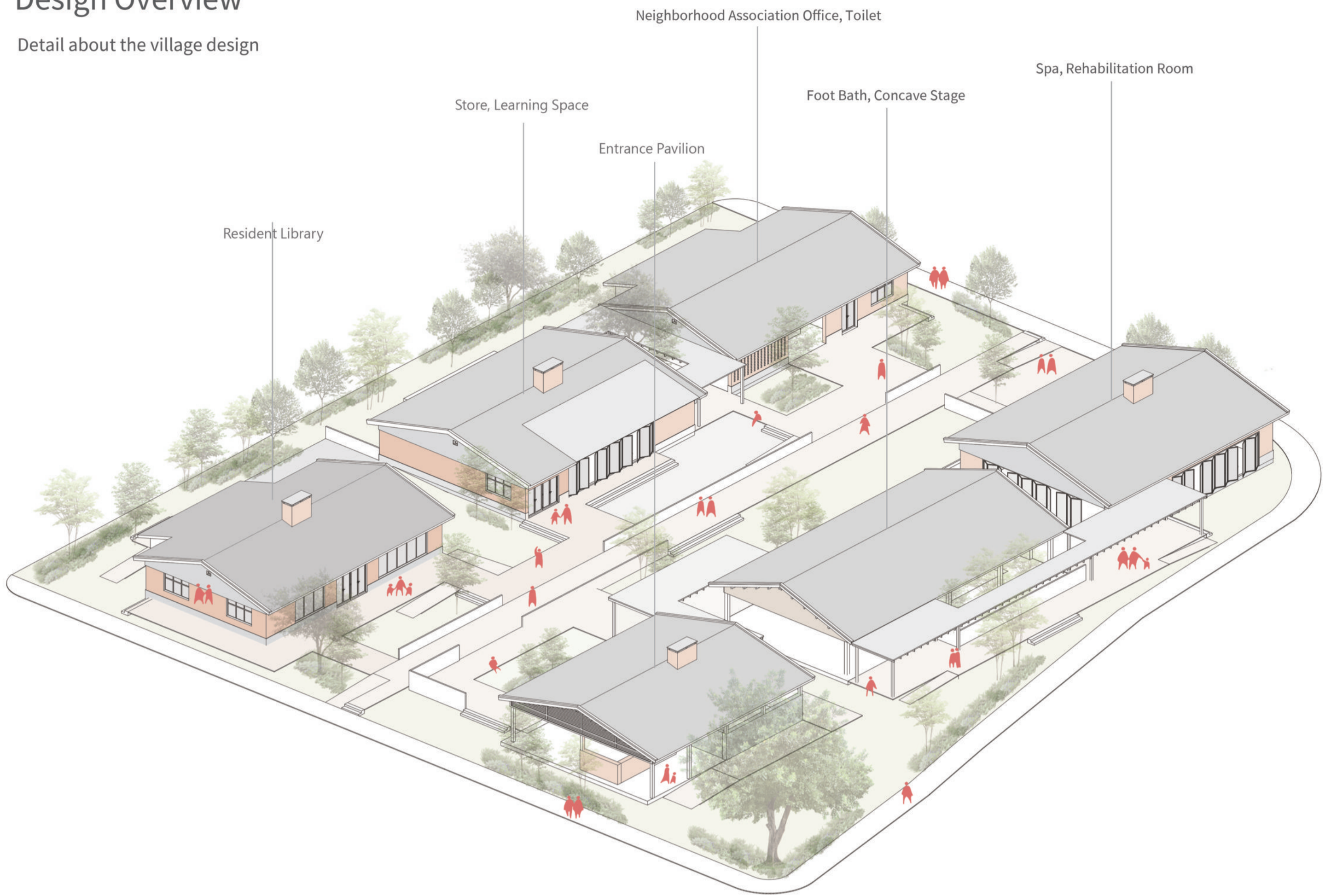
Chimney, red brick and sloping roof

Keep the unique architectural features of the US military dormitory and use it in various spaces to let people who come to appreciate the history of the old buildings.



Design Overview

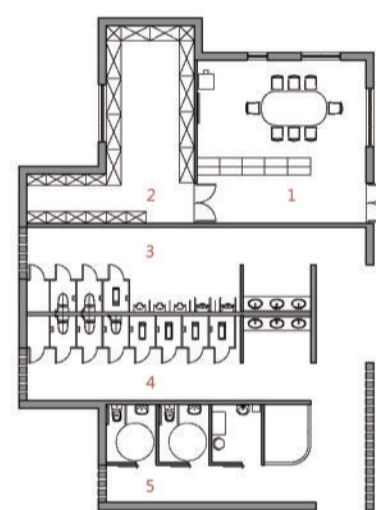
Detail about the village design



Building Details

Integrate With The Community

There are six long-term unused US military dormitories in the base. After reconstruction, the functions include residents' library, student self-operated store, study space, hot spring bathing pool, SPA aromatherapy room and other facilities. Wooden walks are used between each building. Connected, raise the height of 30cm to form many interesting spaces up and down, and retain the old trees, replacing the original fence with trees, creating a more open sense of space, and being closer to the residents

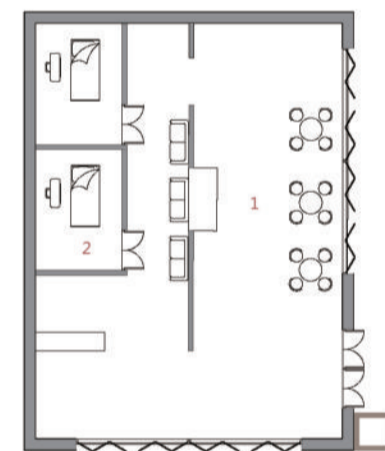


Set up an office to handle some things in the park, and there is a storage place next to it to place some props, and provide public toilets for the park.

- 1. Autonomous Association Office
- 2. Storeroom
- 3. Men's restroom
- 4. Women's restroom
- 5. Accessible restroom

Scale: 1/30

Neighborhood Association Office, Toilet



Let the students of the relevant departments of nearby universities be volunteers, and combine with the foot bath to provide some massage relief, and the residents can feel the characteristics of Yangmingshan hot spring and relax.

- 1. rest area
- 2. Aromatherapy Room

Scale: 1/300

Spa, Rehabilitation Room

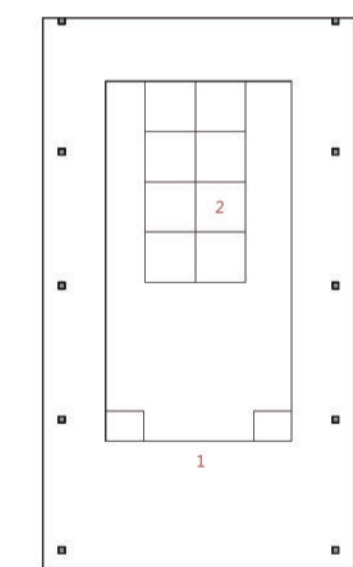


The nearby college student self-operated store sells products made by various university related departments and provides them to residents. There is also a learning space next to them. The residents can come to eat, or college students can teach them some interesting courses.

- 1. Learning classroom
- 2. the University Self-operated store

Scale: 1/300

Store, Learning Space

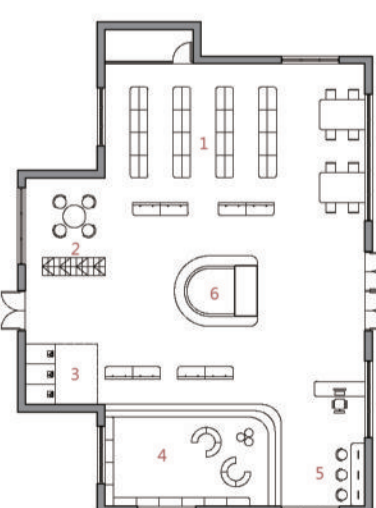


The hot spring is a characteristic of Yangming Mountain. When the weather is cold, residents nearby can come to the hot spring pool to soak their feet and chat with their friends. When the weather is hot, a detachable platform is designed in the middle to become a performance stage to provide nearby university clubs.

- 1. Hot spring foot bath
- 2. Activity platform

Scale: 1/300

Foot Bath, Concave Stage

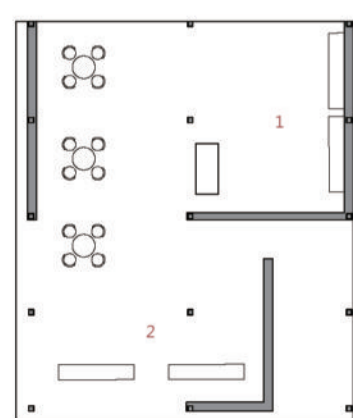


The main population around the base is the elderly, young children, and nearby college students. When the elderly come to the park to relax, children can come to the library to read books, nearby college students can come and volunteer to accompany them, and newspapers will be prepared every morning for the elderly who get up early.

- 1. Reading area
- 2. Periodical Newspaper Area
- 3. Wheelchair equipment parking area
- 4. Children's reading area
- 5. Audiovisual data area

Scale: 1/300

Resident Library

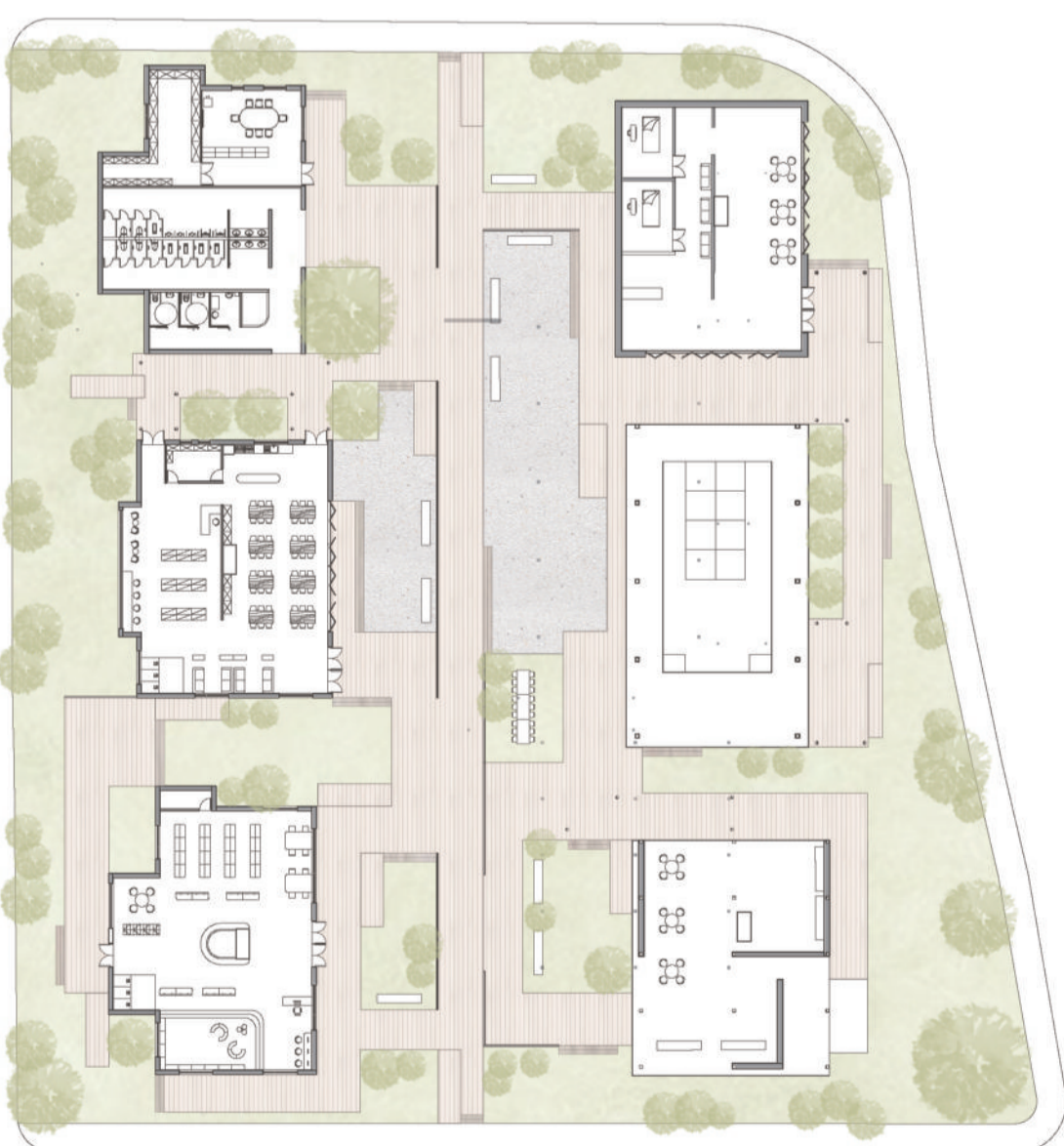


This is the most dilapidated building in the park, and it is also the place for the main people to enter and exit. The old structure is preserved, and parking spaces for electric vehicles are designed for people with reduced mobility. The outer wall uses the characteristic stone wall of Yangmingshan and old old trees.

- 1. Service area
- 2. Electric scooter parking area

Scale: 1/300

Entrance Pavilion



Scale: 1/500