

Residential complex in ghalat-shiraz

Approach

In this project, we are going to design a framework of housing for specific society and a specific context, and ultimately reach the appropriate answer for this social and cultural context. In this way, at the first studies carried out in the field and library sections, and the results of which were listed separately in each section after the studies. Since the context is so important in housing field (whether it is a physical, social or cultural context, etc.), the study's priority was to study the field and observations of site. It has been attempted to create a balanced and integrated combination of residential buildings by gaining adequate knowledge about the organs and their orientation and their relationship. A combination that can respond to demands and expectations of its social platform.



Site location _____

It can be said that the village of Qalat is composed of two sections, urban and rural, and the site is located in the middle of these two parts. The area is 6938 square meters. The south facade is facing the river and 30 meters of the north facade is faced to the main village street and the remainder to the bypass.



-specifications

residential complex in ghalat-shiraz

32 dwelling unit

site area: 6938 m2

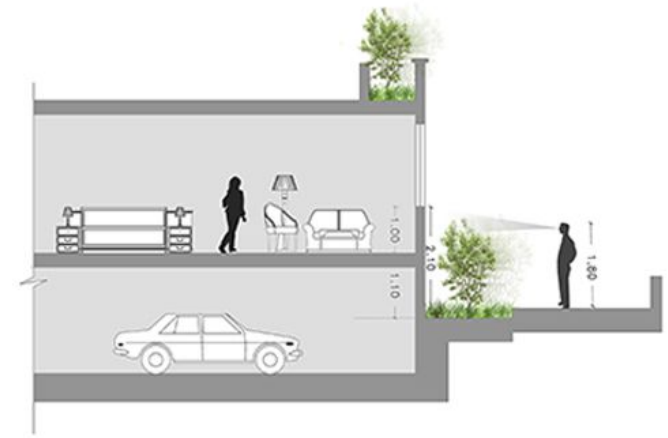
lot coverage: 3480m2

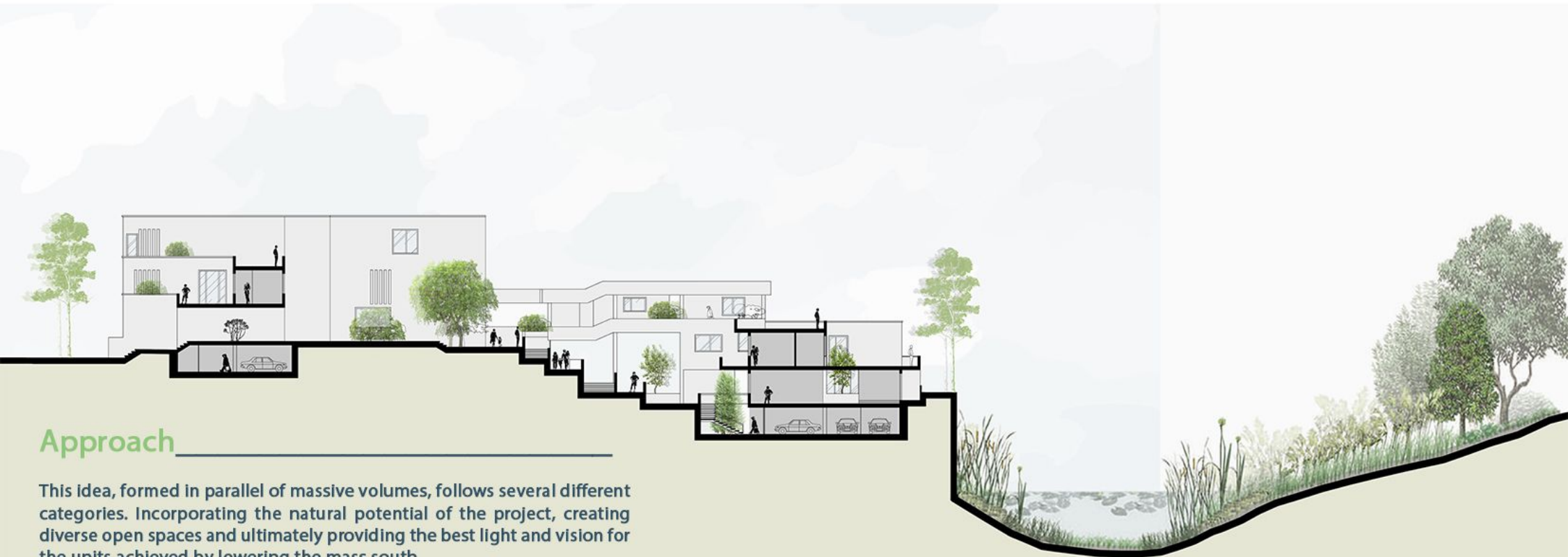
FAR: %80



Approach

cognition of man has long been the subject of thought by thinkers. What should be design for human must born from this cognition. Housing, as which is made for humans, deserves to be a mirror for reflection of culture, social behavior, personal and social aspirations and ideals.





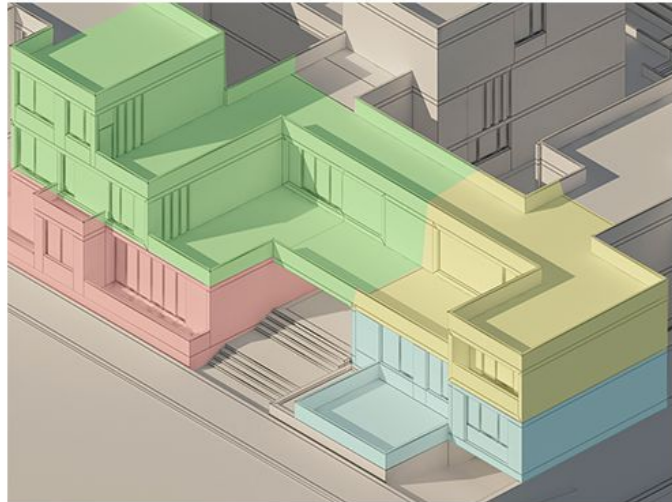
Approach

This idea, formed in parallel of massive volumes, follows several different categories. Incorporating the natural potential of the project, creating diverse open spaces and ultimately providing the best light and vision for the units achieved by lowering the mass south.



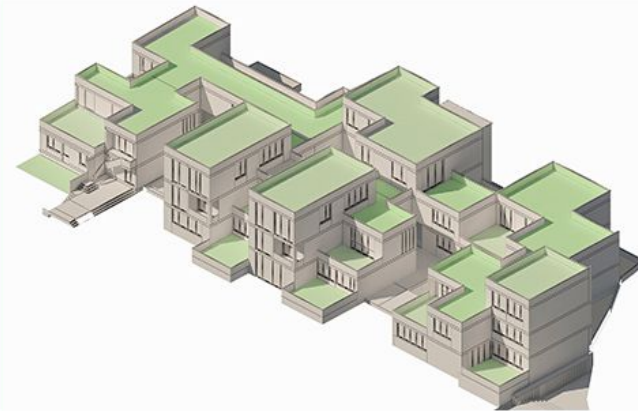
Defining facades by combining volumes and attention to human scale

The views of the project are made up of volumetric compositions, with the views of the various combinations filled and vacant as well as the retreats of the upper levels. and pay attention to the skyline.



Definition of entrance by combination of dwelling units

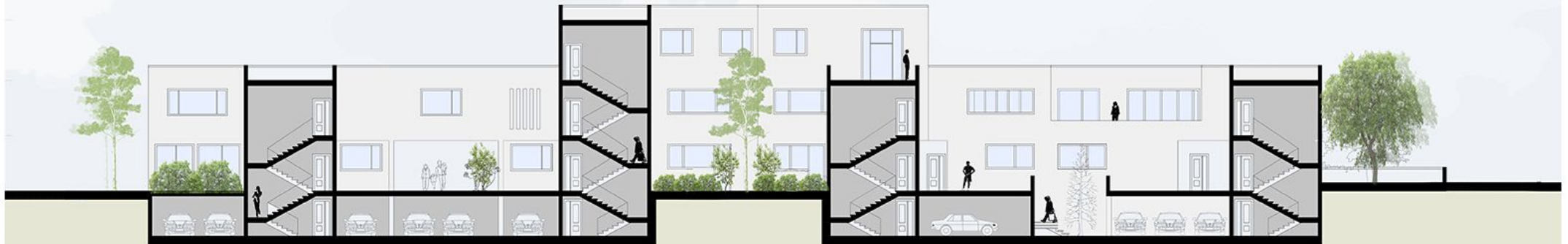
In this set, the entrance is the result of a combination of dwellings units and is completely part of the texture of the set.





Approach

This idea, formed in parallel of massive volumes, follows several different categories. Incorporating the natural potential of the project, creating diverse open spaces and ultimately providing the best light and vision for the units achieved by lowering the mass south.





sense of the environment

At the entrance of this complex the most beautiful view of the project is framed. Users get a sense of the environment when they arrive!



Riverside units

These units are in direct contact with the nature of the southern part of the site, and all strategies are in place to enhance this.

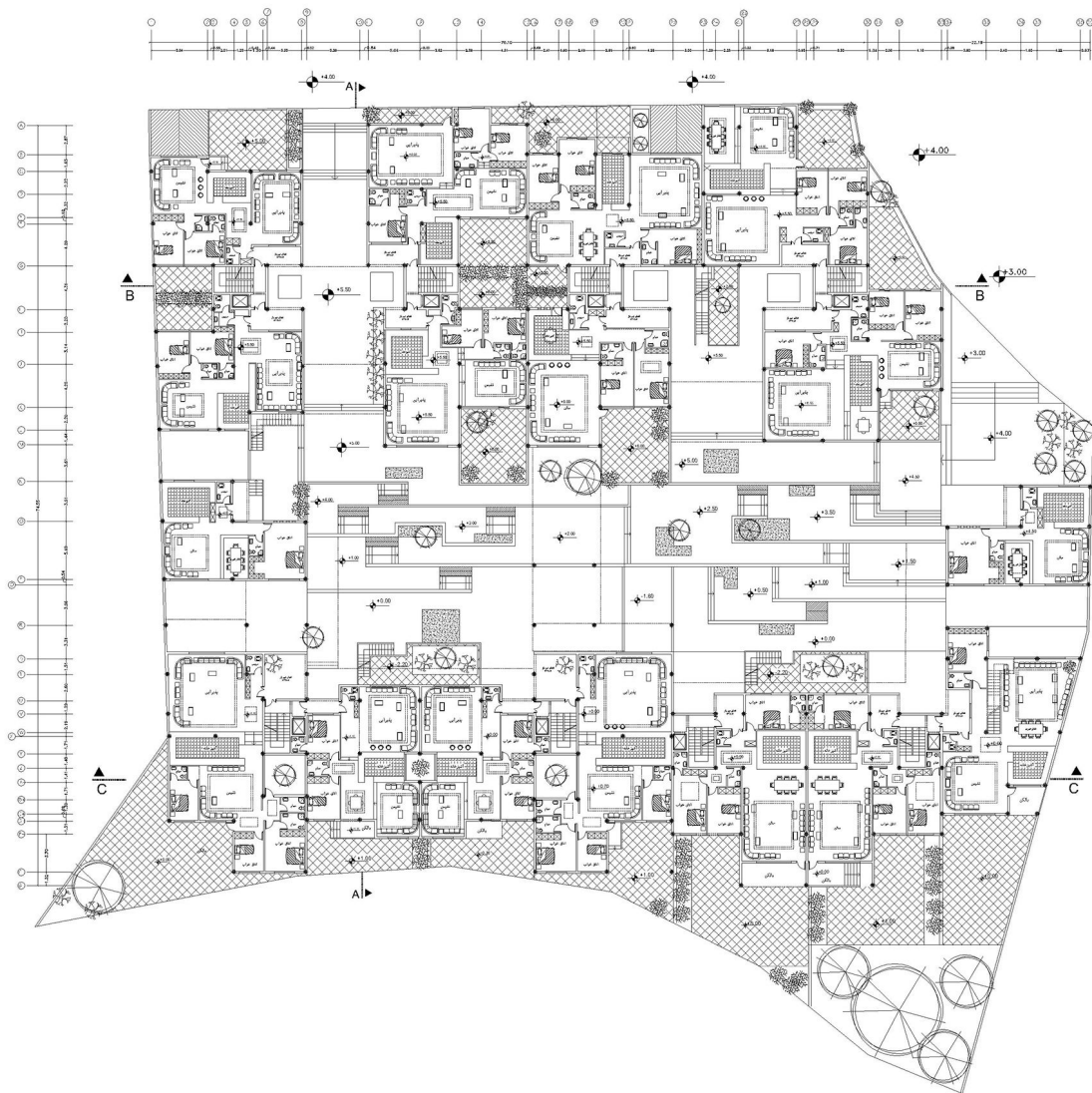
All of these units enjoy south-facing light and natural scenery.

In these units the priority of communication with the outdoor is the private arena.

The segregation of the fields is well done.

The outdoor space of these units is separated by designed dials and the use of walls is avoided.





N



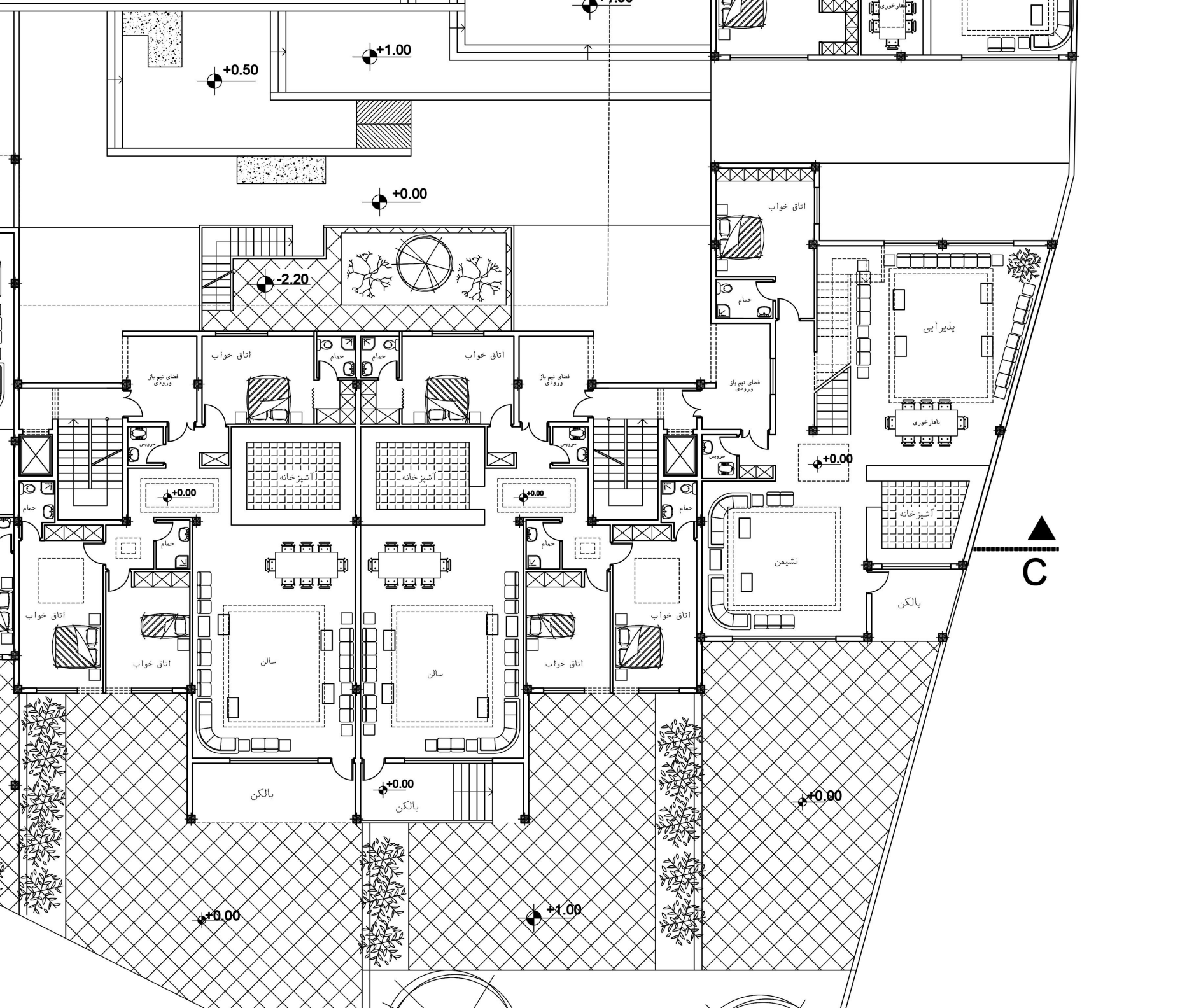
دانشگاه شهید بهشتی
دانشکده معماری و شهرسازی

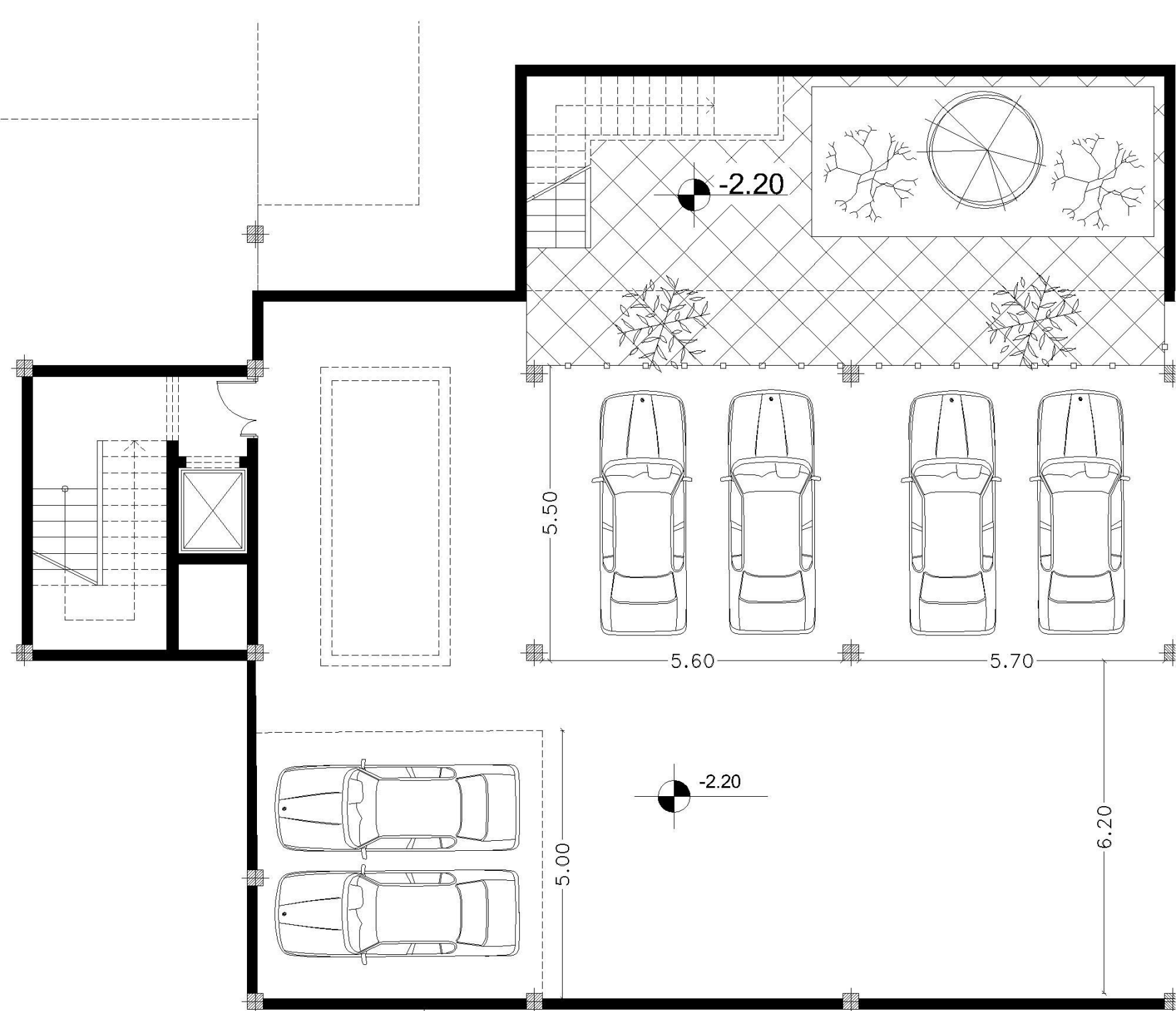
کارشناس ارشد مهندسی معماری
طراحی مجموعه مسکونی در روستای فلکات شیراز

دانشجوی سید حمزه حیدری
استاد راهنما: دکتر کیوان جورابچی

تابستان ۹۸

پلان طبقه سقف
مقیاس: ۱/۱۵۰





-2.20

-2.20

5.50

5.60

5.70

5.00

6.20

