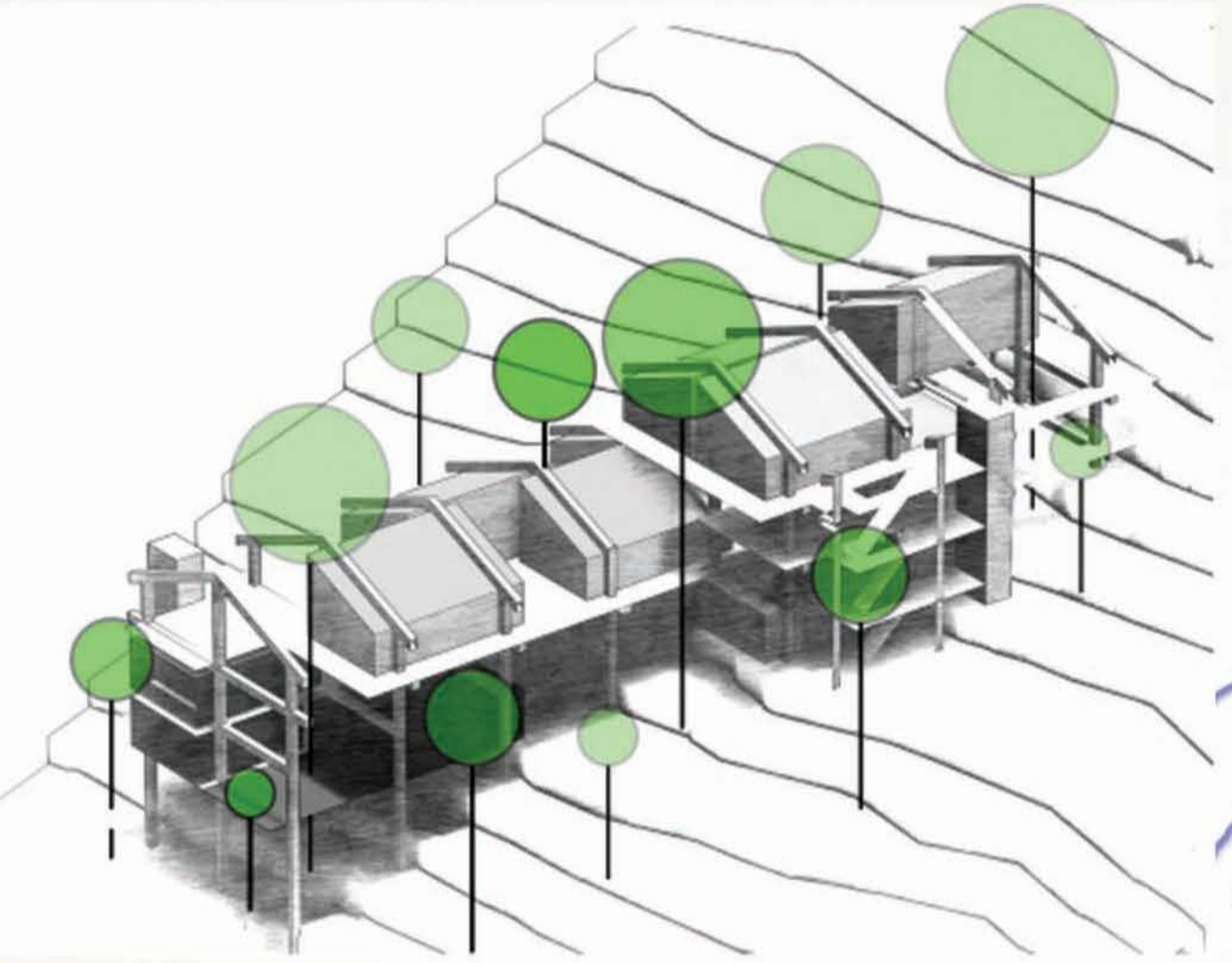


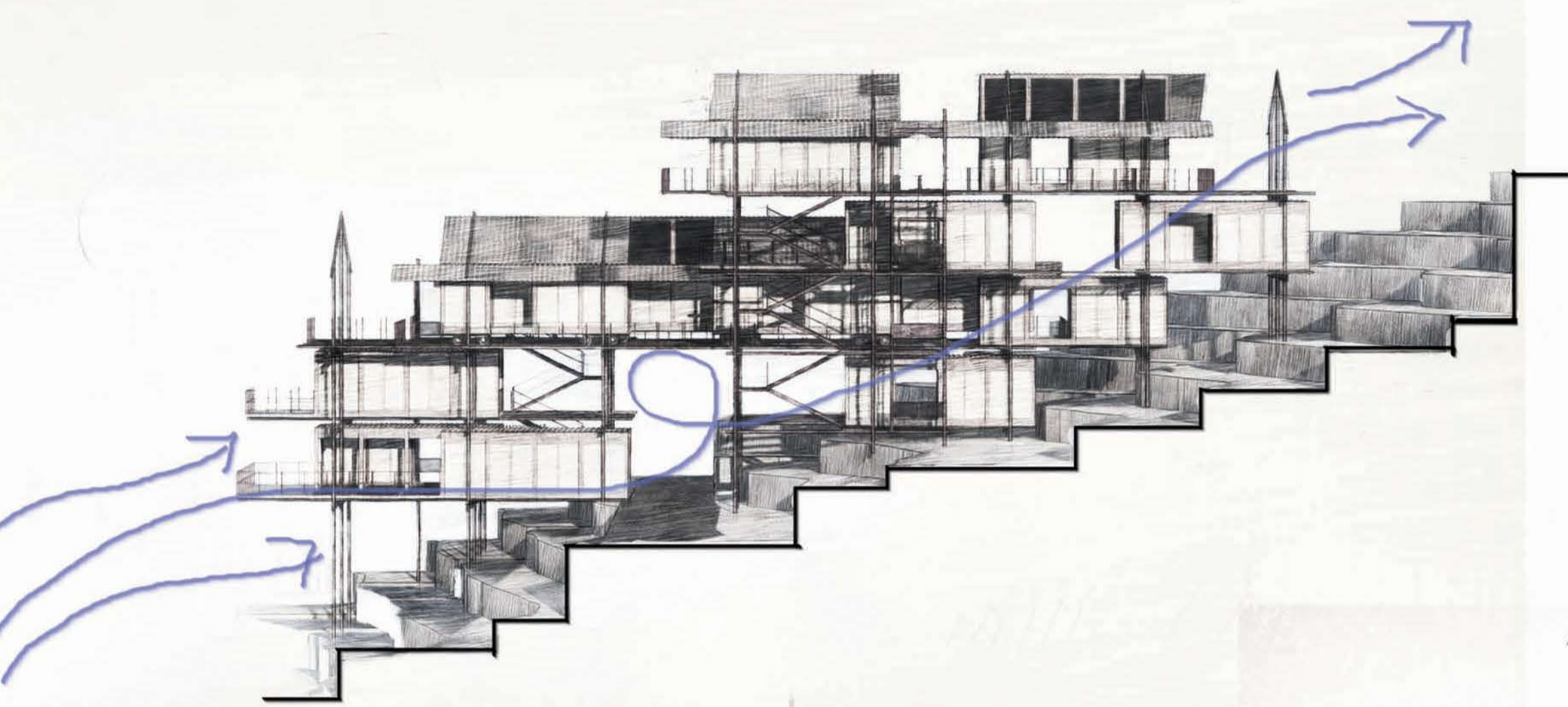
# THE DESIGN AND THE CONTEXTUAL RESPONSE



FOR THE HAPPUTALE COMMUNITY A TEA FACTORY COULD BE THE BEST KNOWN STRUCTURE AFTER THEIR LINE HOUSES, THERE LIVES HAS BEEN ORIENTED WITH THIS FORM AND PROCESS, IT IS ALWAYS GOOD TO BE IN A PLACE WHICH IS FAMILIAR

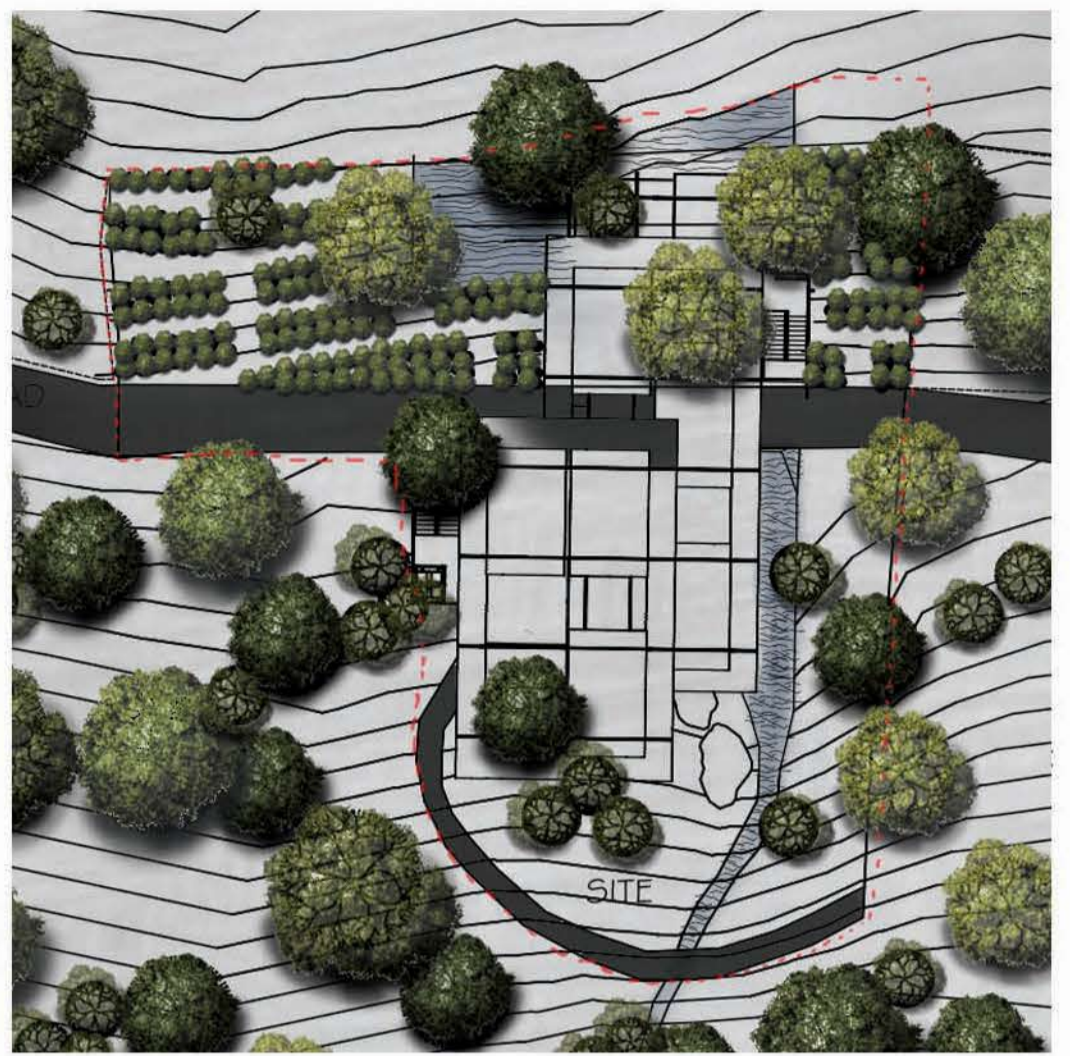


DEFINE NEW DEFINITION FOR THE RELATIONSHIP BETWEEN ARCHITECTURE BY BREAKING THE CONVENTIONAL ENVELOPE OF A BUILDING AND MERGE IT WITH THE NATURE. THE BASIC STRUCTURE OF A TEA FACTORY IS BEING CONSIDERED



WITH THE 2M GROUND TO FLOOR HEIGHT GAP THAT IS MAINTAINED THROUGHOUT THE DESIGN, WILL ENCOURAGE THE BIO DIVERSITY TO EXIST UNDER THE CONSTRUCTION HAVING ENOUGH SUNLIGHT FALLEN.

THREE CORES ARE ALIGNED WITH THE LAYOUT IN ORDER TO RECEIVE DAY LIGHT AND VENTILATION, PRESERVING THE BEAUTY OF THE WATER WAY.



THE DESIGN IS PLACED CONSIDERING ABOUT THE EXISTING TREES AND CREATING SPACES ACCORDING TO THAT

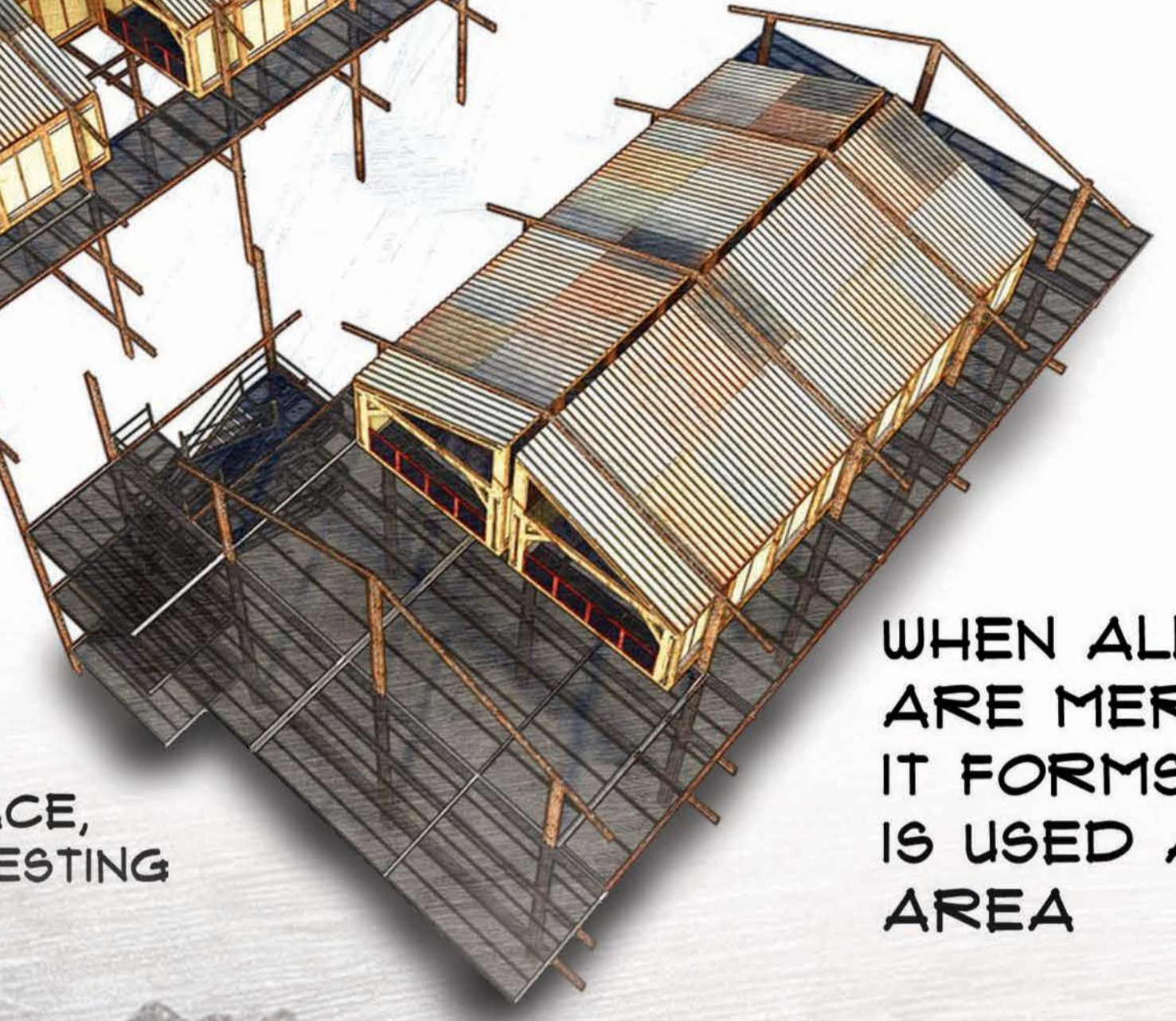
TWO MODULES ARE MERGED IN ORDER TO CREATE LECTURE HALLS



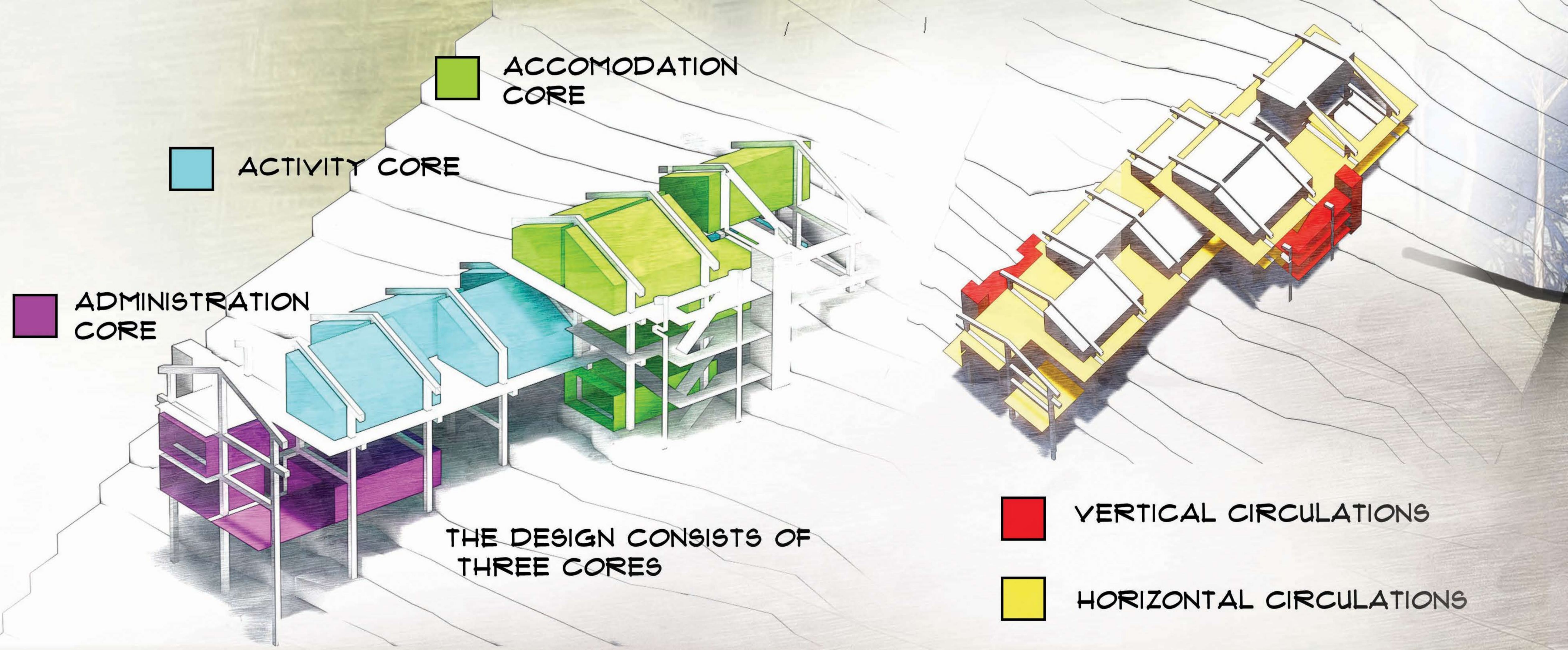
WHEN THE MODULES ARE SEPERATED IT CAN BE USED AS WORKSHOP AREAS FOR THE FOR DIFFERENT ACTIVITIES

## ACTIVITY CORE

THE MODULES IN THE ACTIVITY CORE CAN BE MOVED ALONG IN ORDER TO MAKE DIFFERENT SPACES WHICH IS BENEFICIAL TO GET THE MAXIMUM USE OF THE LIMITED SPACE, WHILE MAKING THE SPACES INTERESTING



WHEN ALL THE FOUR MODULES ARE MERGED TOGETHER IT FORMS A HALL WHICH IS USED AS AN EXHIBITION AREA



SIDE ELEVATION