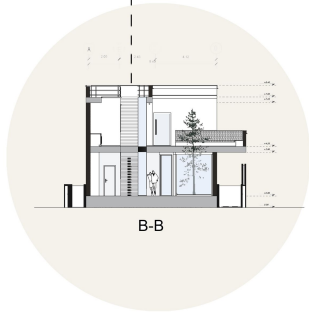


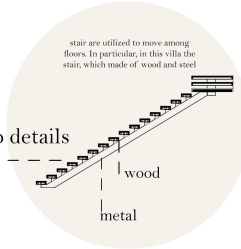
A-A



B-B



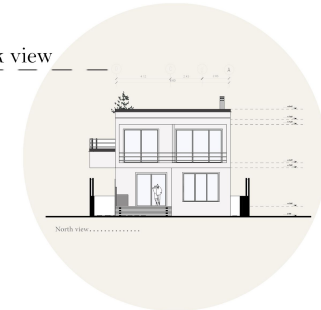
Step details



stair are utilized to move among floors. In particular, in this villa the stair, which made of wood and steel

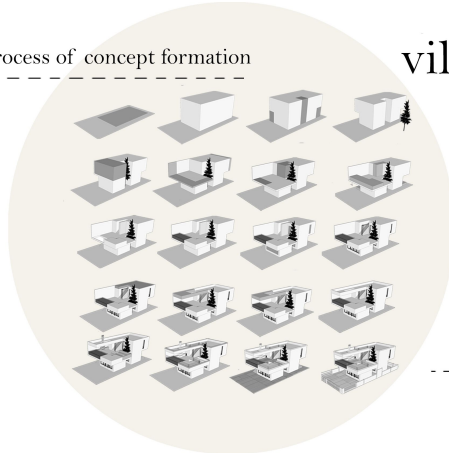
wood
metal

Back view



North view.....

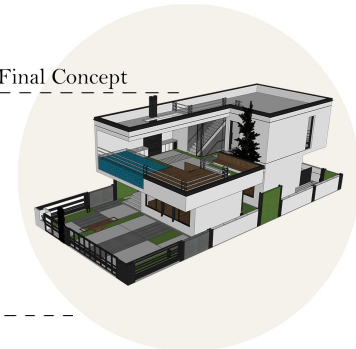
The process of concept formation

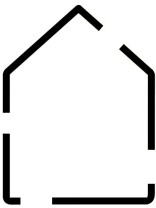


villa DEL

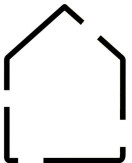
Showing the heart of the project through the pool in .the facade caused the expression within the collection Locating this villa to the north has also been an attempt to follow the architectural design path of the past which, by attaching the console on the first floor, evokes a courtyard in the villa. There have been numerous pop-ups in the body in order to approach the border in and out. This is a self-definition villa

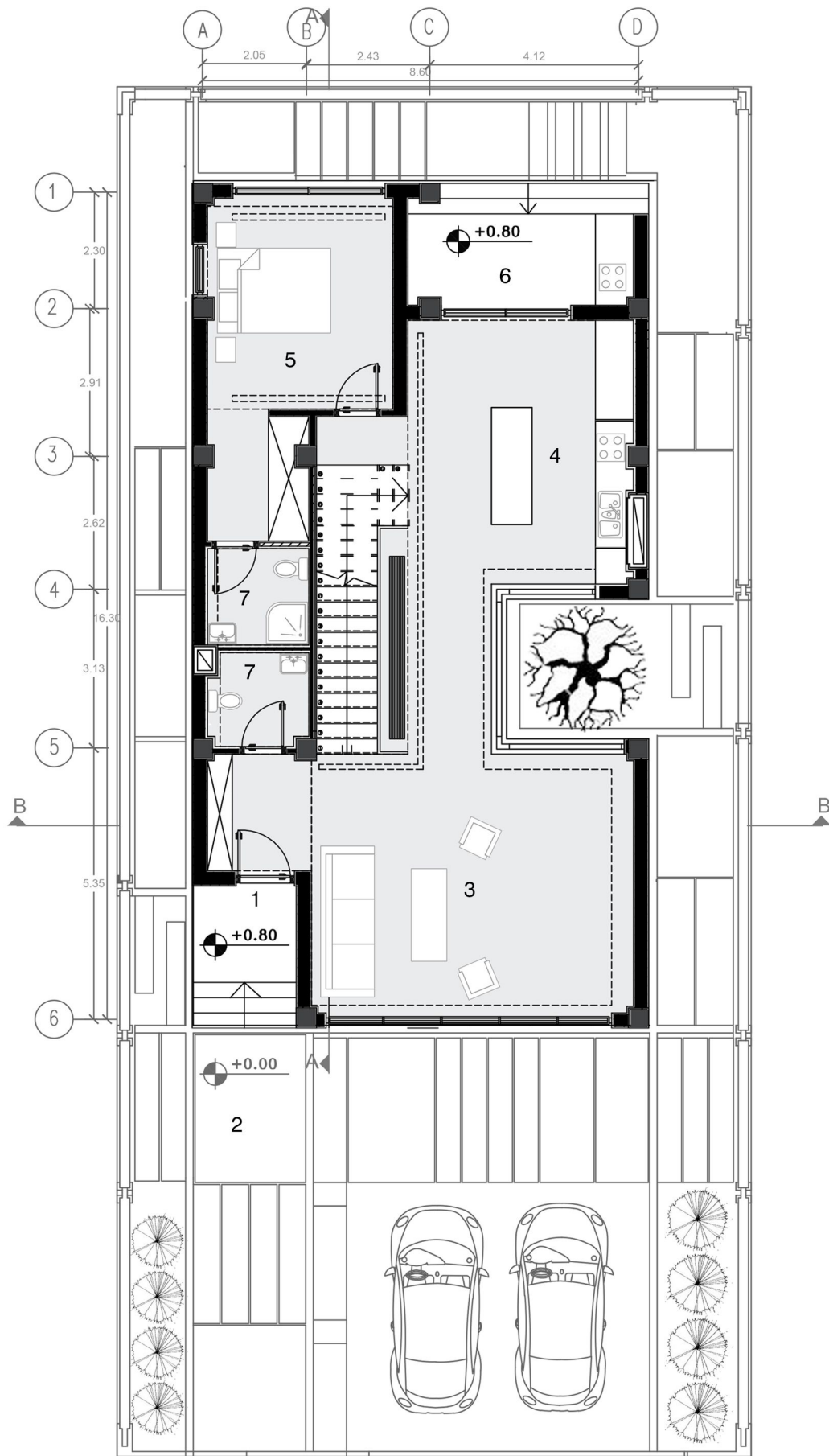
Final Concept



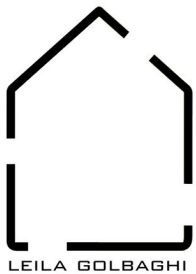


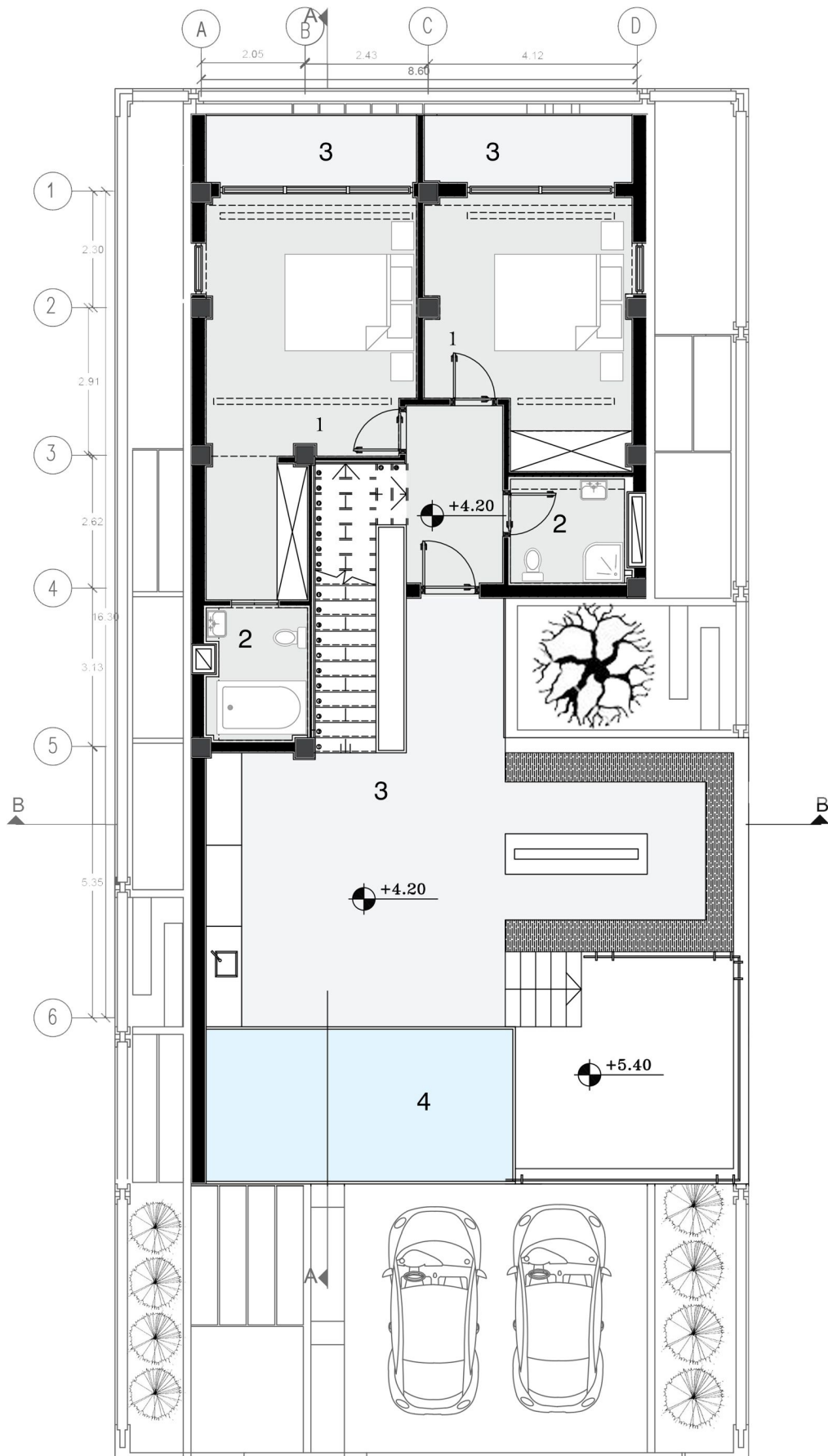
LEILA GOLBAGHI



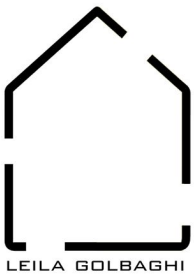


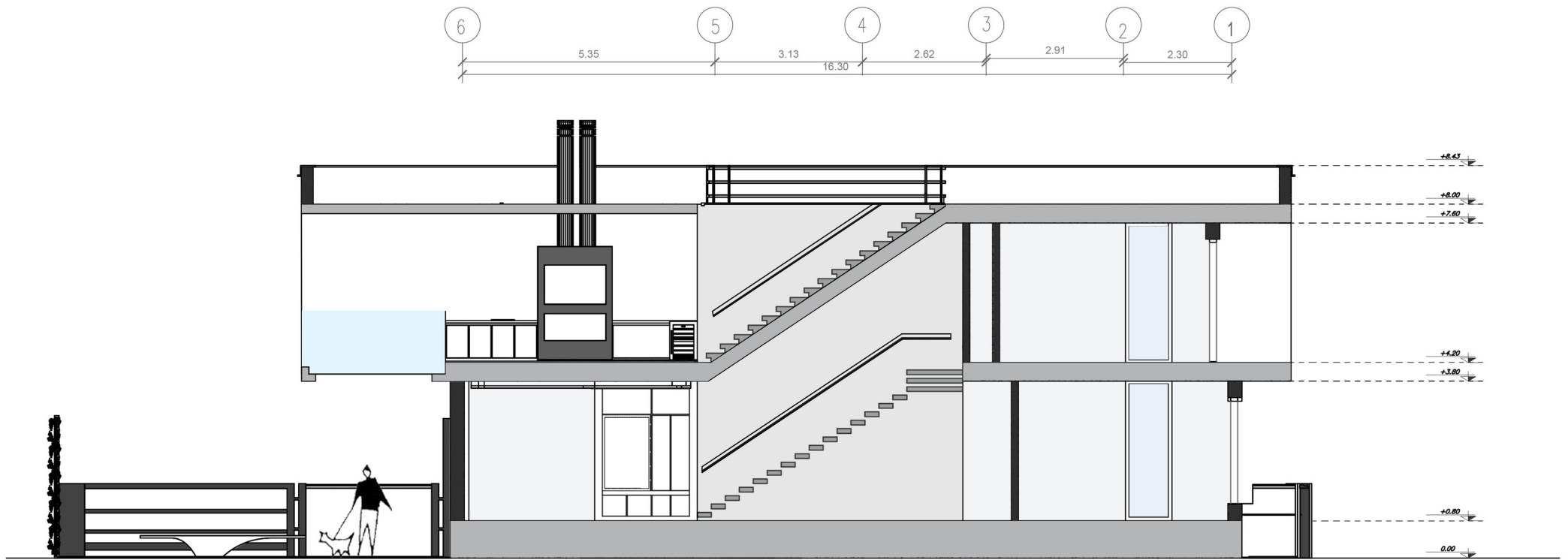
- 1 entrancefirst floor
 2 yard
 3 living room
 4 kitchen
 5 bedroom
 6 terrace
 7 wc & bathroom



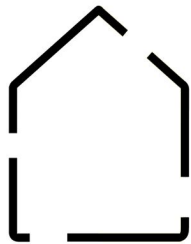


- 1 bedroom second floor
- 2 wc & bathroom
- 3 terrace
- 4 pool

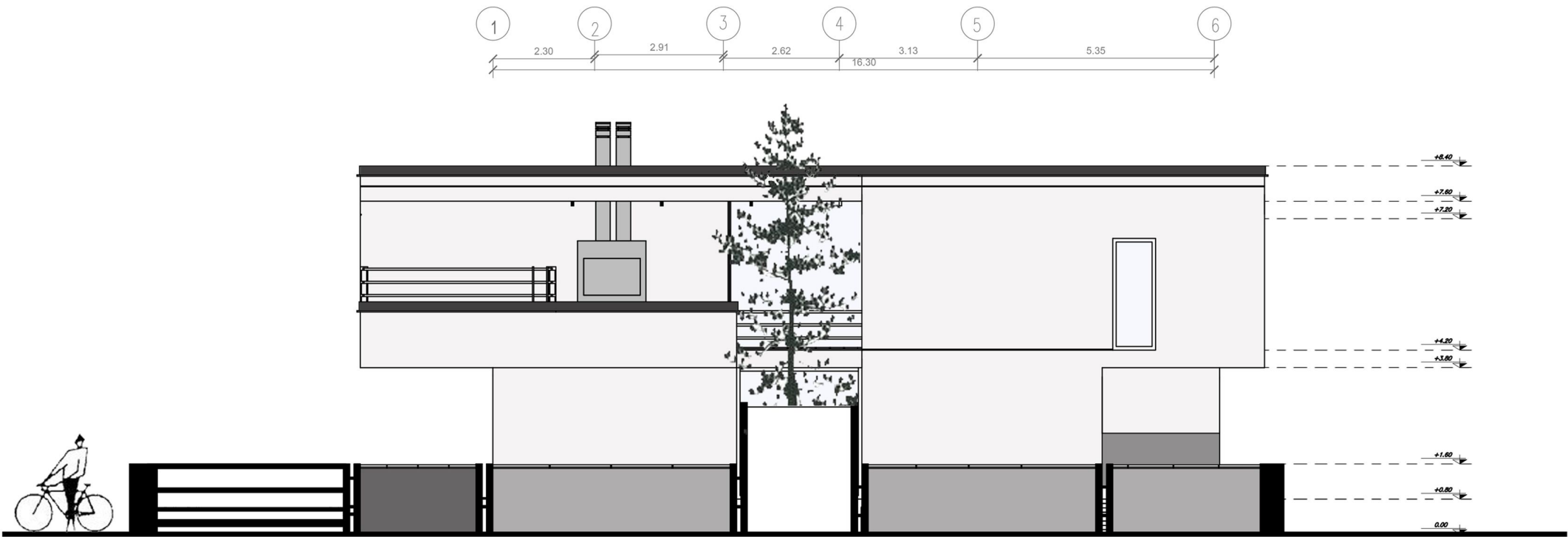




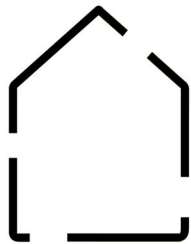
A-A



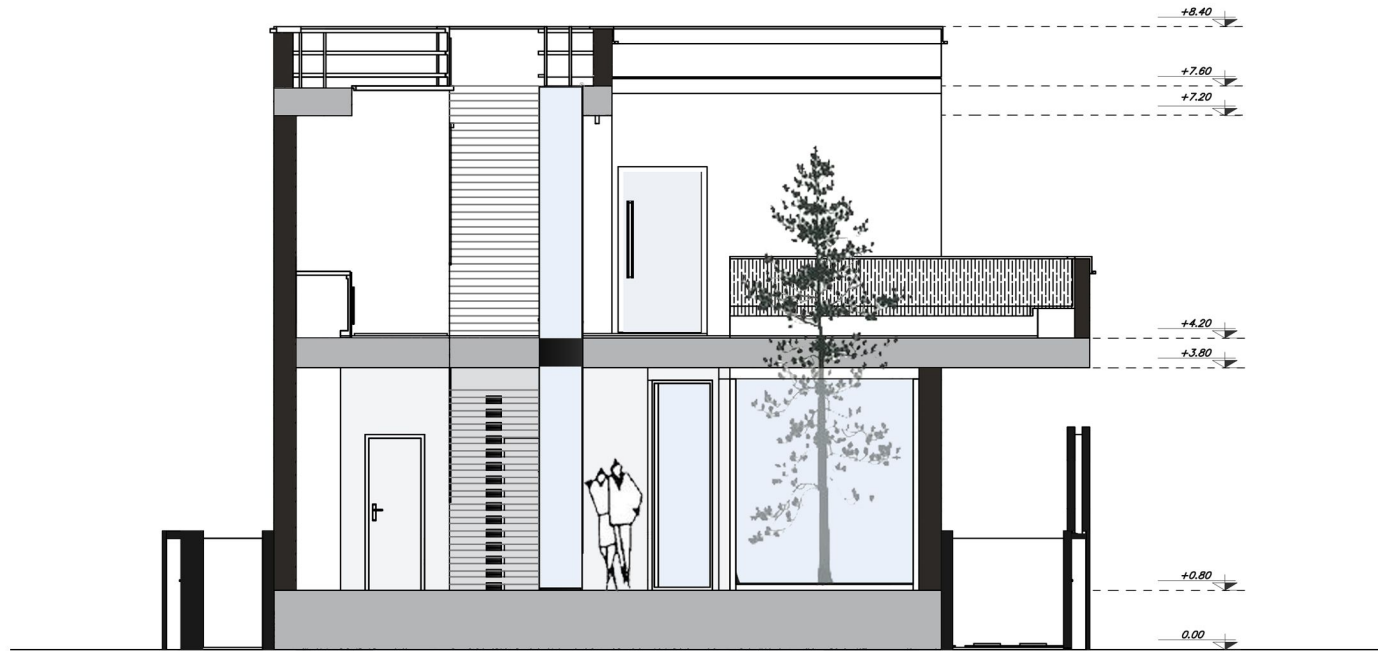
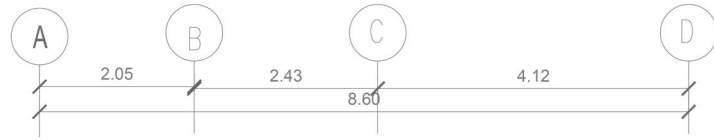
LEILA GOLBAGHI



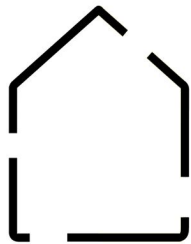
Eastern view



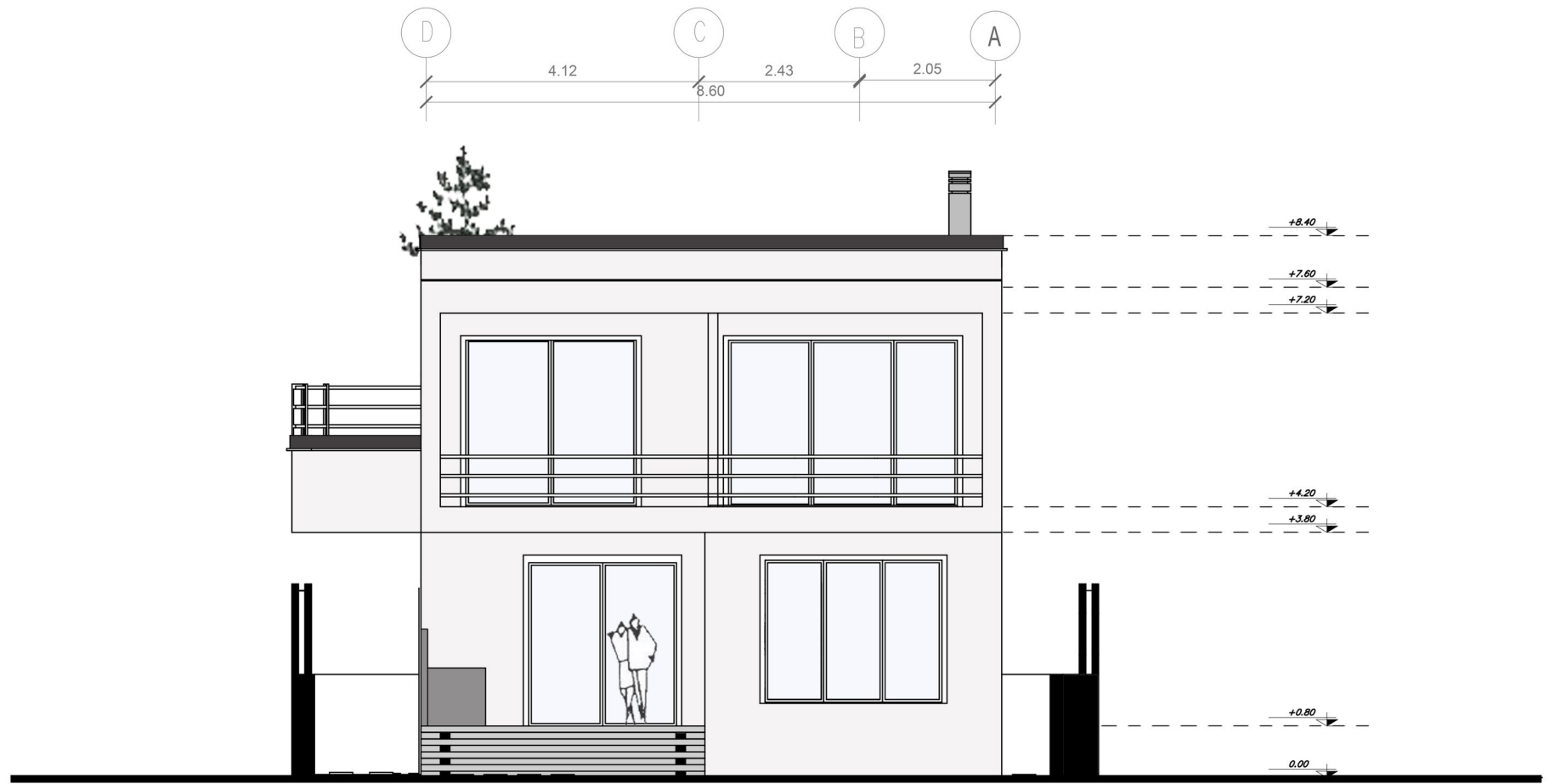
LEILA GOLBAGHI



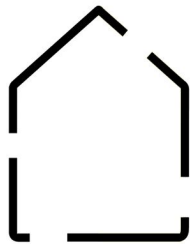
B-B

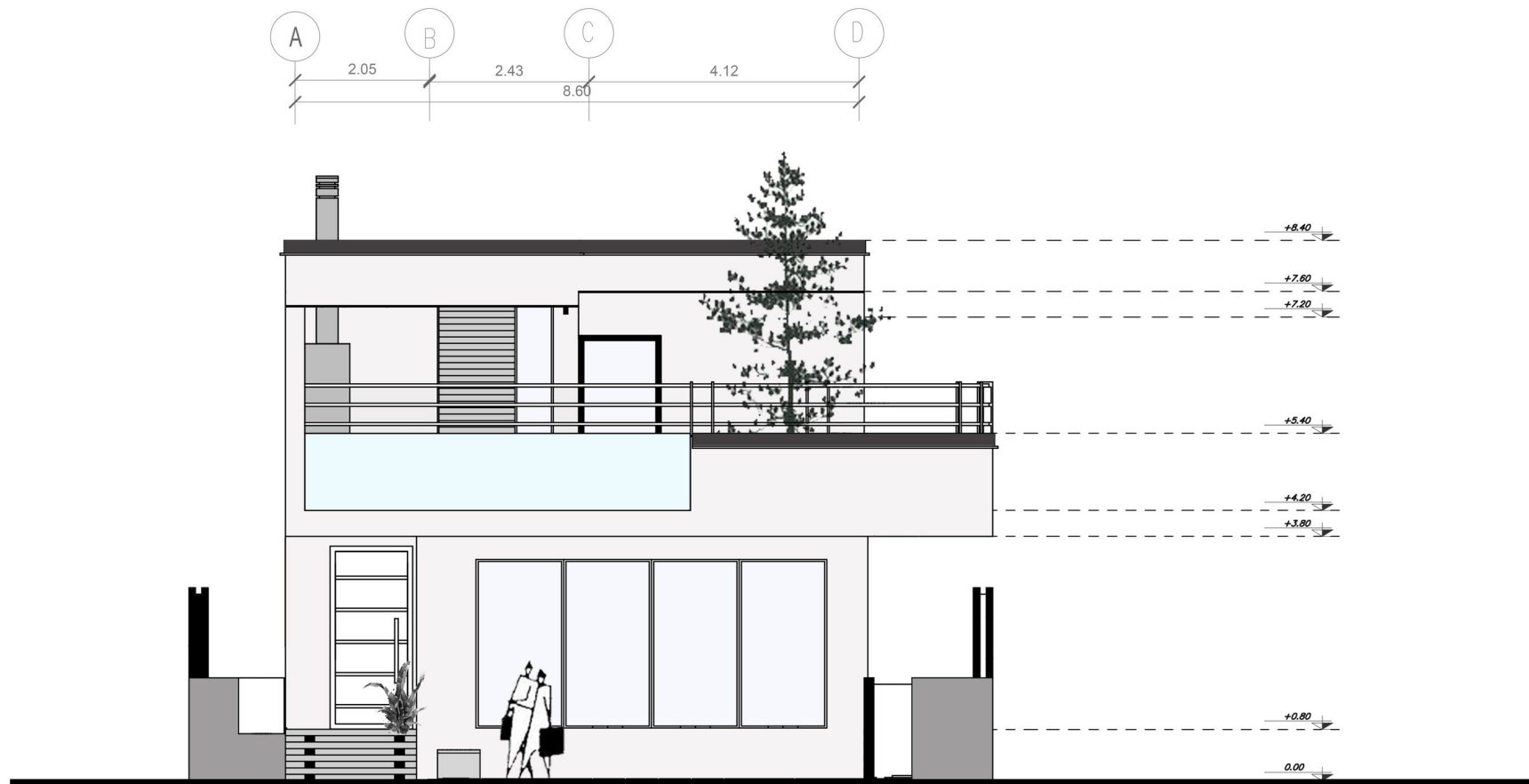


LEILA GOLBAGHI

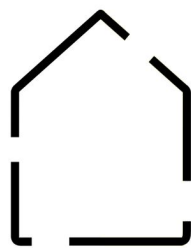


North view

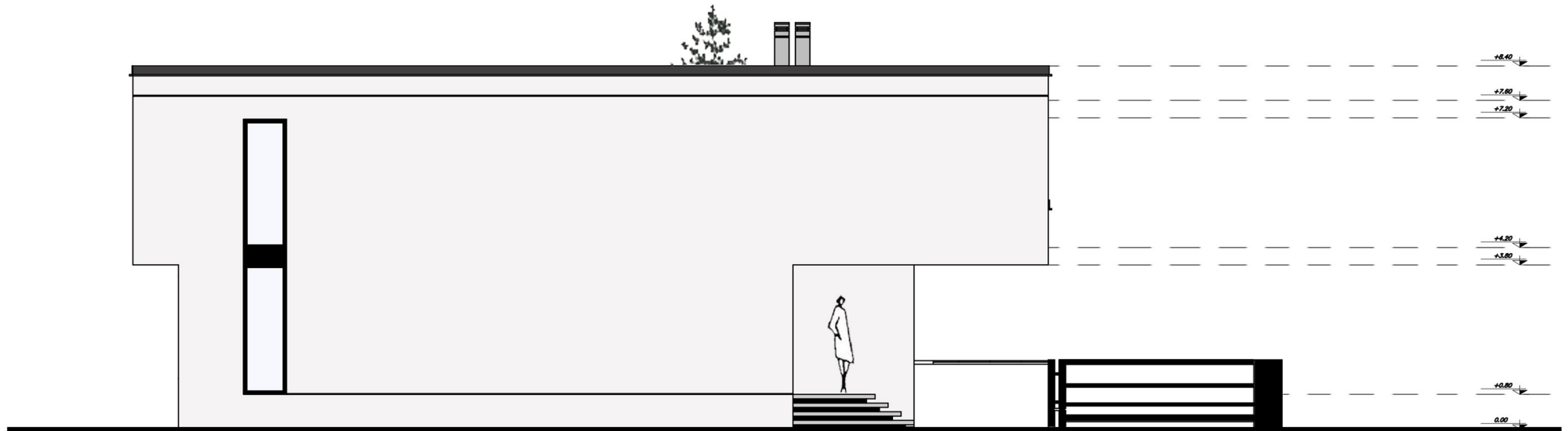
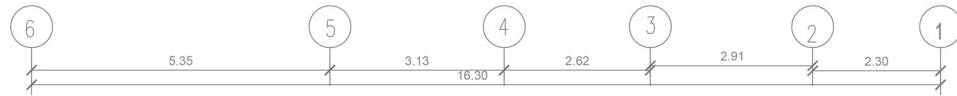




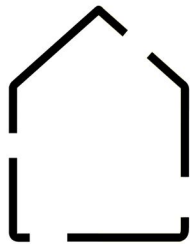
southern view



LEILA GOLBAGHI



West view.....



LEILA GOLBAGHI