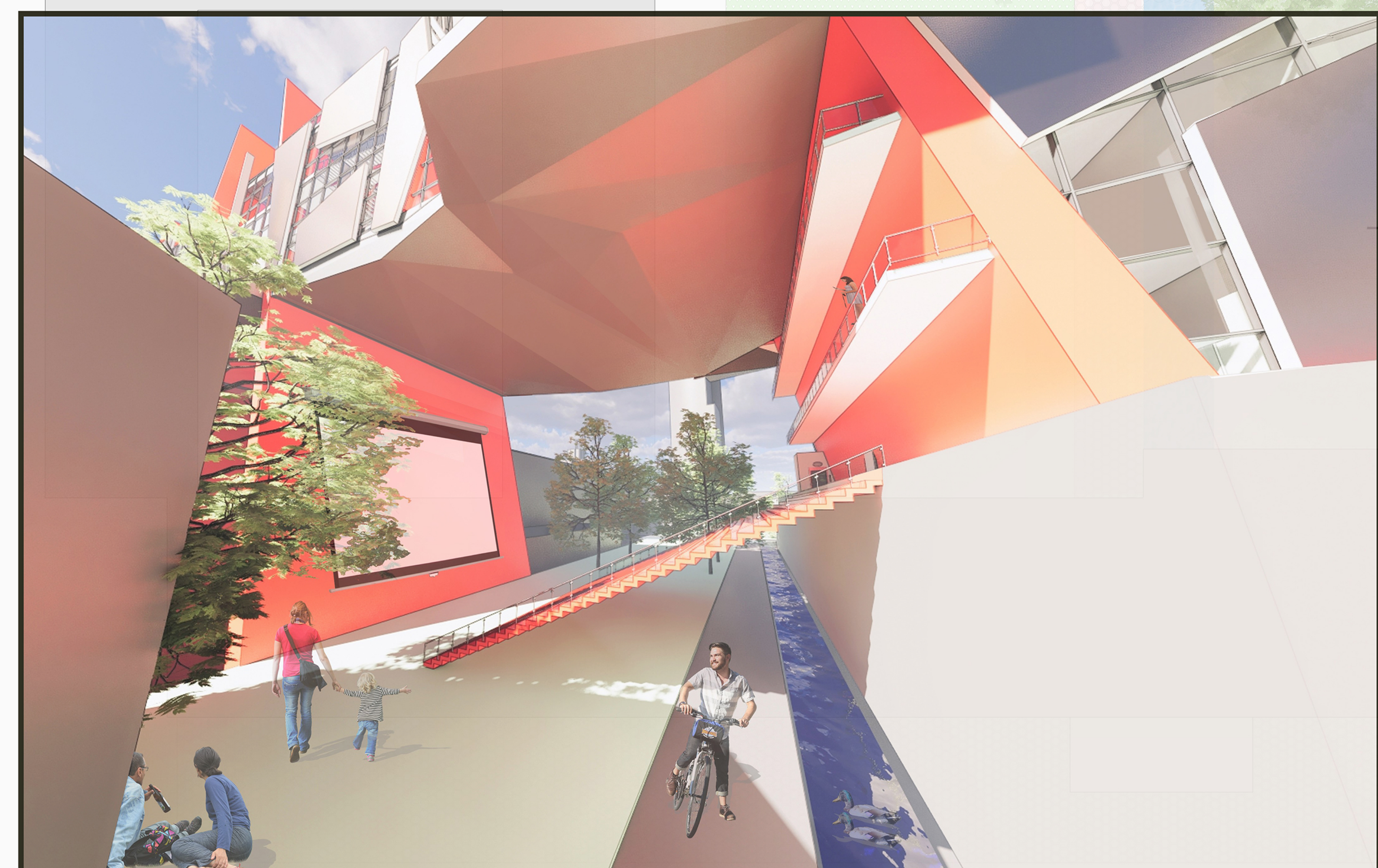




Ground floor-5th



Ground floor plan of suggested building, 1:250 scale

Campus ground floor, green area



Radlinske'ho



The path to the building, connected with the industrial street



The 'street' continues - building interior

- Group work
- Personal work
- Rest



- Legend**
- (1) Info services, entrance area, Technical background -1000 m2
 - (2) Rectorate in connection to Administrative offices of the research - 500 m2
 - (3) Media library, study rooms-500 m2
 - (4) Workshops- 400 m2
 - (5) Innovative interdisciplinary research center STU, startup center, cooperation with practice- 3000 m2
 - (6,7) Presentation (experiential) center of science and research, Social, exhibition and multipurpose spaces- 2000 m2
 - (8) Catering, restaurants, cafes- 350 m2+
 - Terrace