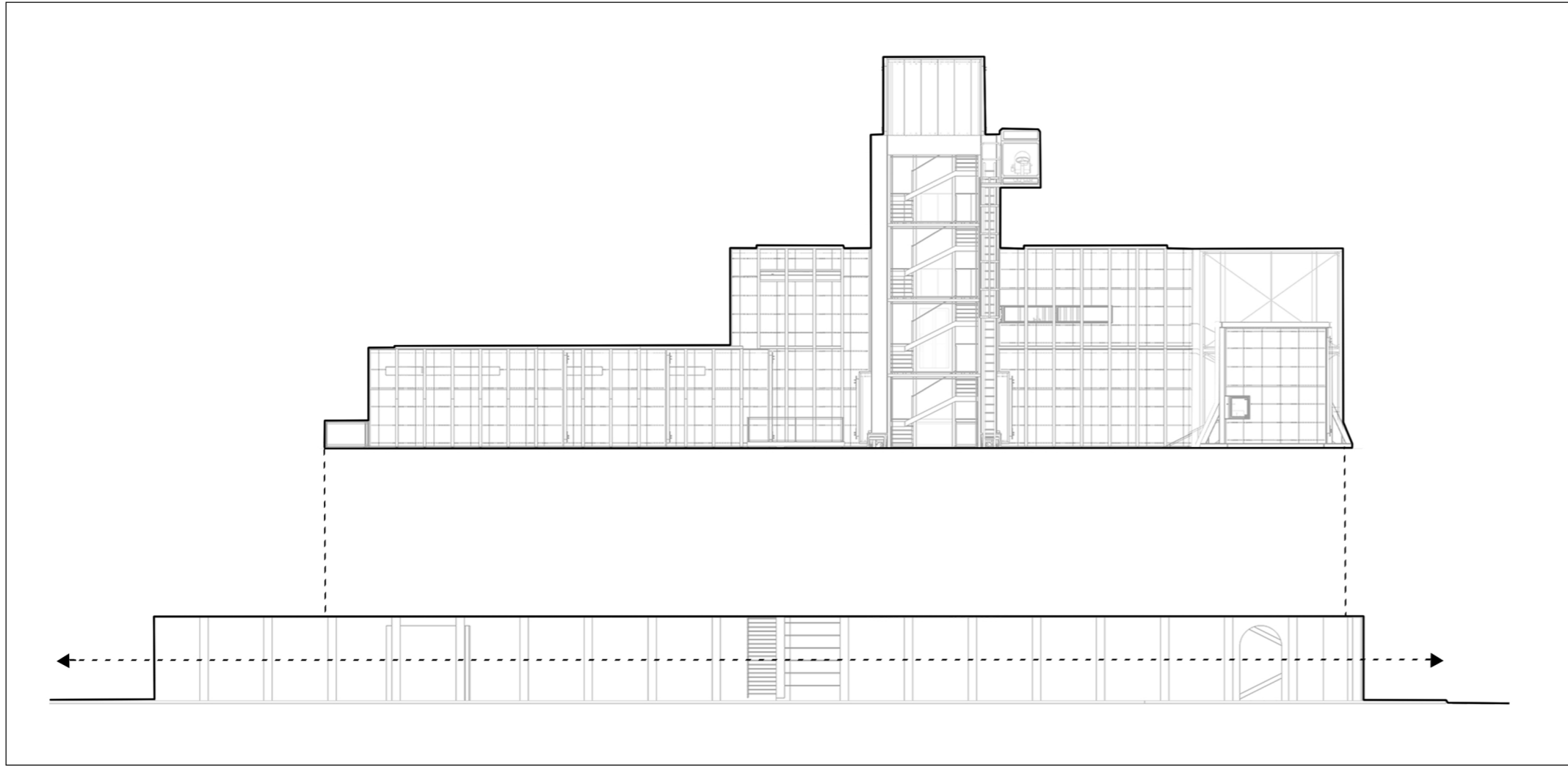


PROGRAM DISTRIBUTION



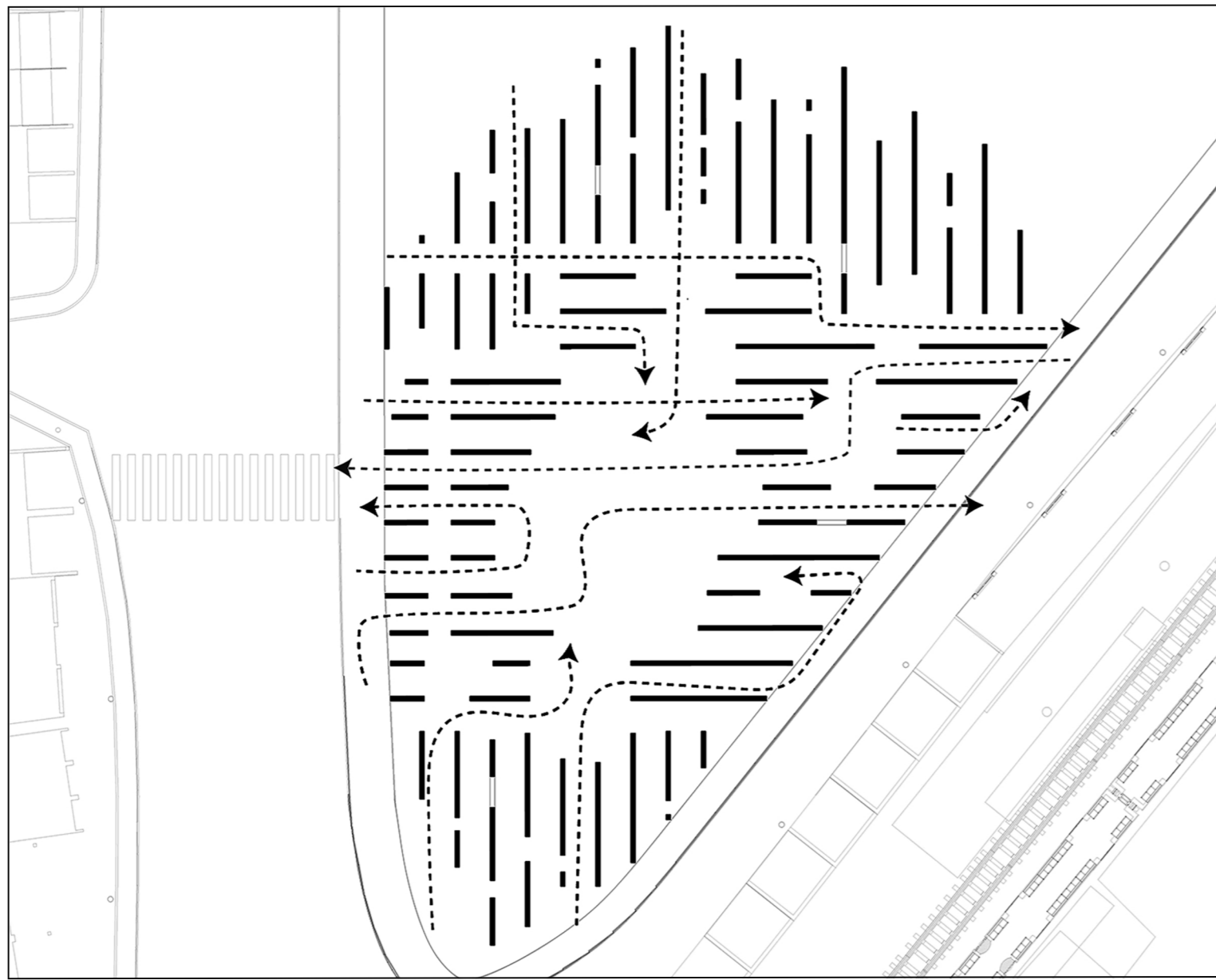
Program

Upper level

Structures have been elevated and distributed among volumes in order to give back the site to the city and the community not as just another open space but in a form of an urban sculpture that creates a seamless experience between the city and the art world.

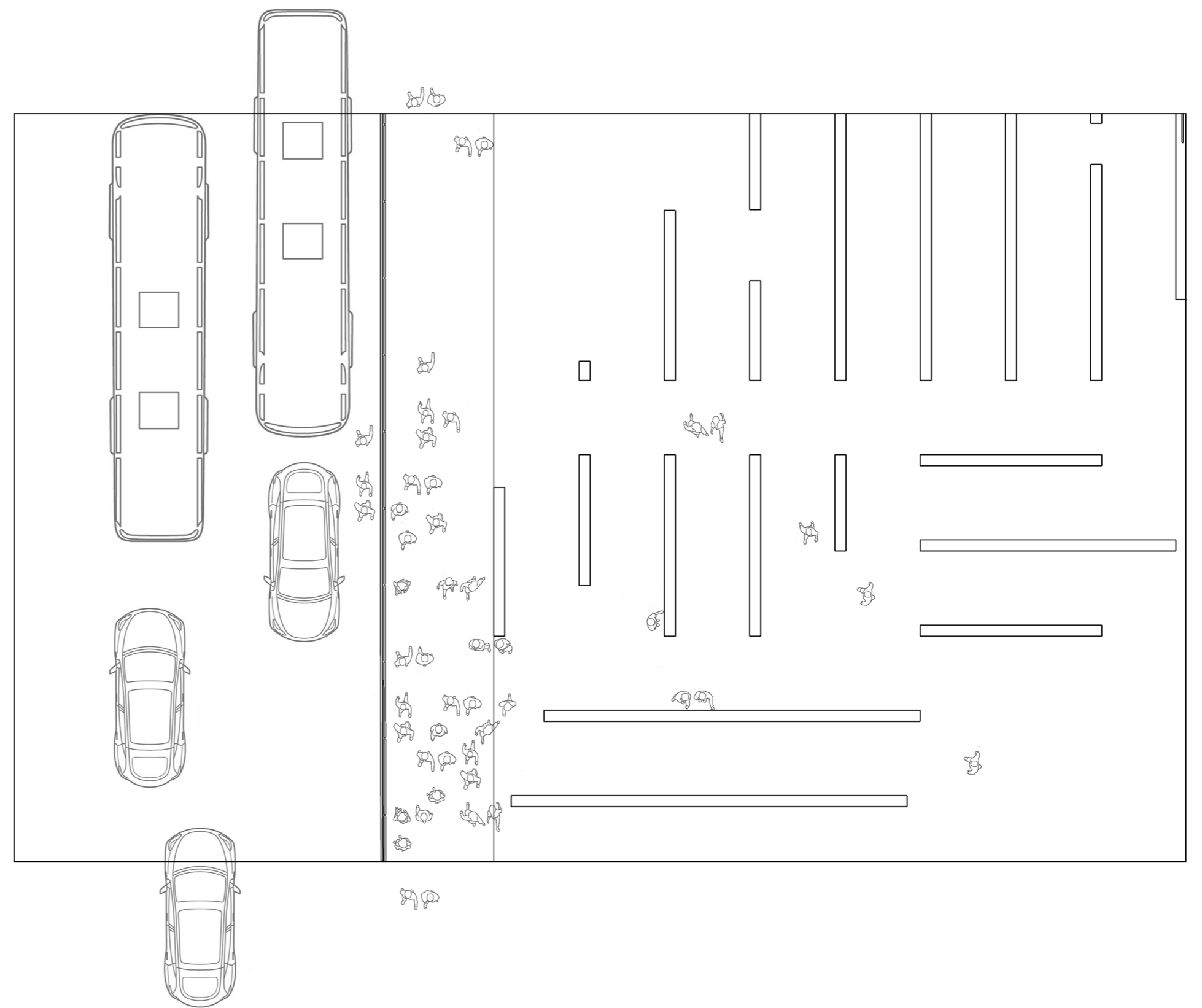
Street level

Public performances, events and exhibitions will take place in the street level which creates a subtle flow between the museum and the streets.



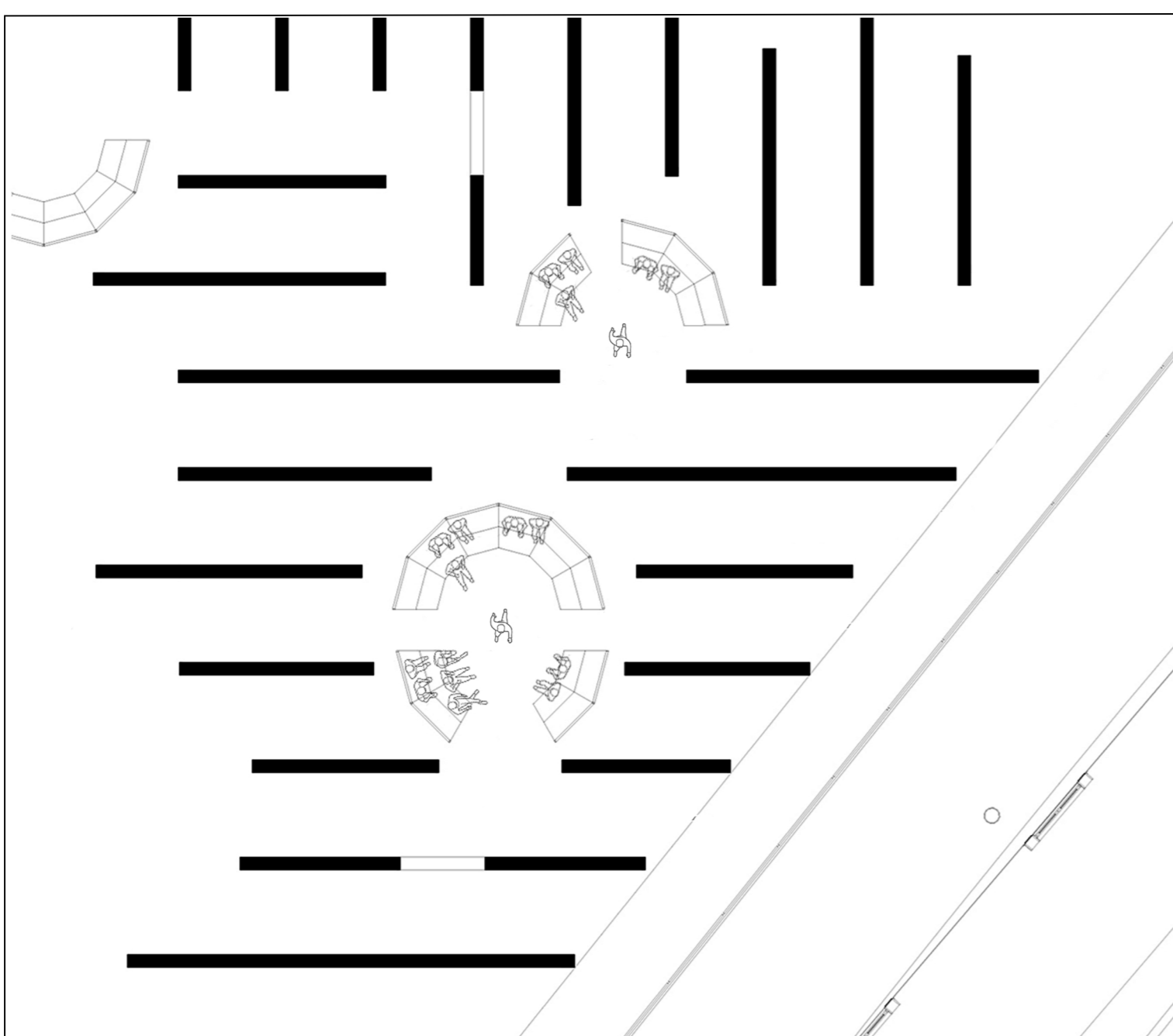
Circulation

Open ended plan encourages people to penetrate the site from all four directions without a specific hierarchy for circulation. Which provide the visitors an infinite number of possible routes to circulate.



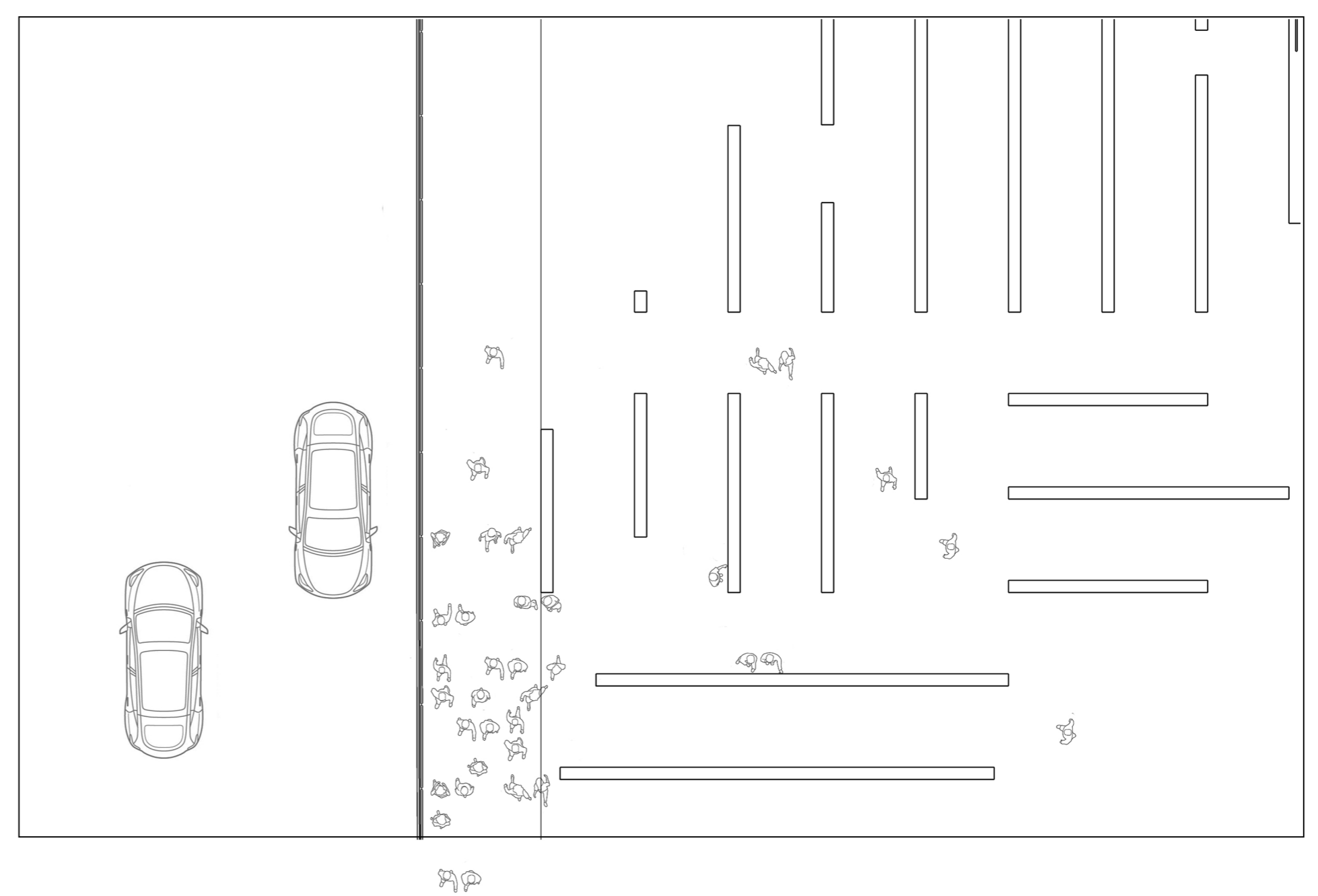
Atmosphere

When one enters through the fins it takes them to a very different type atmosphere compared to the that of the immediate adjacent roads and the surroundings. Predominantly something someone can't expect and experience from this part of the city.



Acoustic performance

The fins also work as an insulator to cut down all the traffic noise that could ruin the experience. Because of that, more small-scale performances and events could take place at the same time within the spontaneous gaps without obstructing each performance.



Visual experience

Not just to the pedestrians passing by, the fins would also give a visual experience to the vehicles as well. Fast moving vehicles would merely notice a rhythmic pattern when going by.