

COMMUNITY CENTRE

CONCEPT

- NEED TO BE DESIGNED IN THE VILLAGE ,KILA RAIPUR- A FAMOUS VILLAGE IN LUDHIANA KNOWN FOR ITS RURAL OLYMPICS.

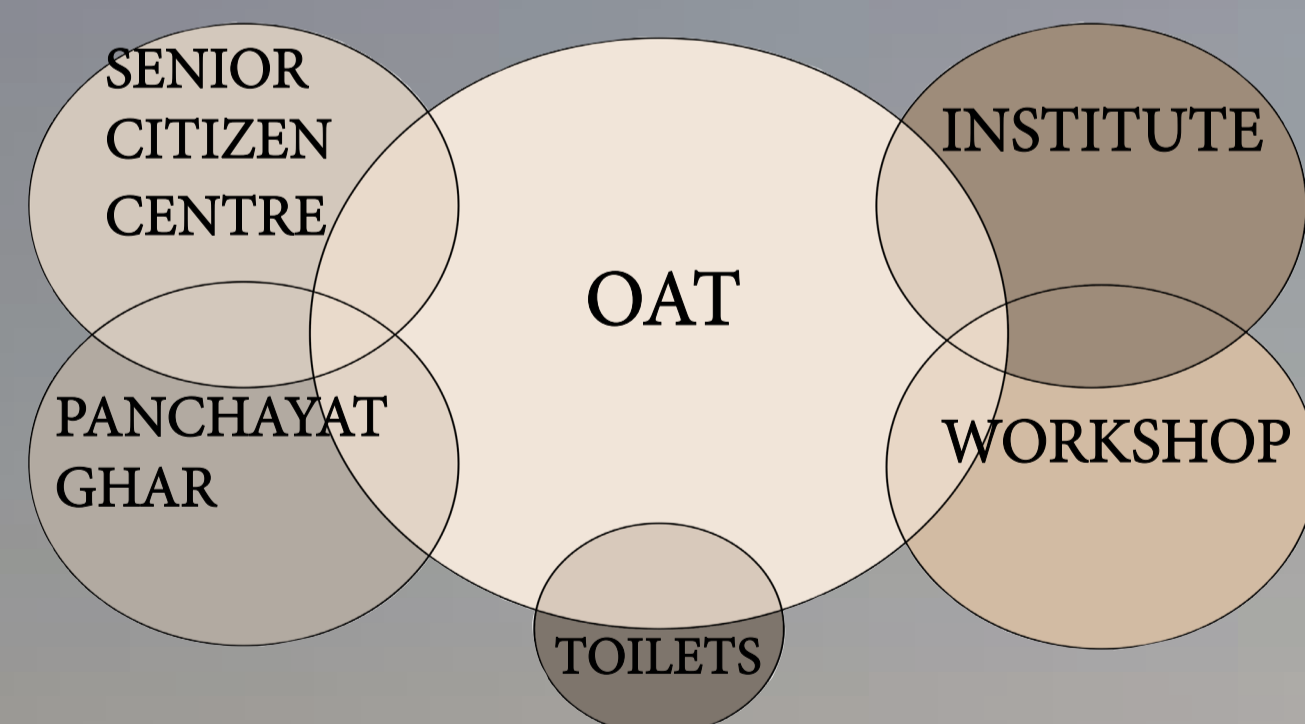
CONTEXT:

- CURRENT SCENARIO IN THE VILLAGE :
- * LOSS OF VILLAGE'S RURAL CONTEXT
- * REDUCING INTERACTION AMONG VILLAGERS AND THE RURAL ENVIRONMENT
- LOCATION OF THE SITE:
- * IN THE VICINITY OF RAILWAY TRACK
- * ACCESS TO THE SITE

IDEAS:

- NEED OF INTERACTIVE SPACES HAVING RURAL ELEMENTS TO MAINTAIN THE VERNACULAR CONTEXT OF THE VILLAGE.
- ZONING OF SPACES AS PER THE UTILITY & DESIRE OF THE USERS

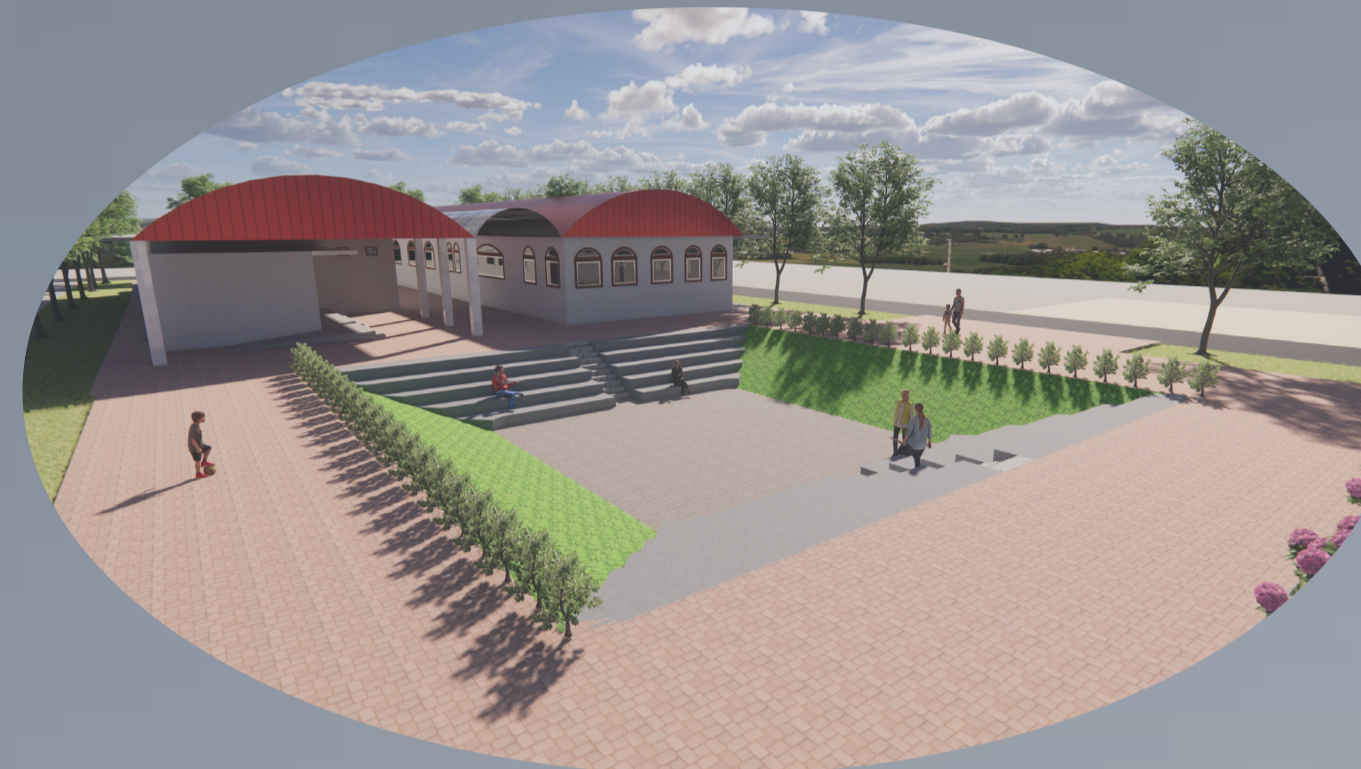
ZONING



- PANCHAYAT GHAR & SENIOR CITIZEN CENTRE ARE ZONED TOGETHER AS SILENCE IS DESIRED
- INSTITUTE & WORKSHOPS ARE ZONED AS ACTIVITY SPACES
- OAT CONNECTS ALL THE SPACES AND IS PLACED CENTRALLY ALONG WITH TOILETS



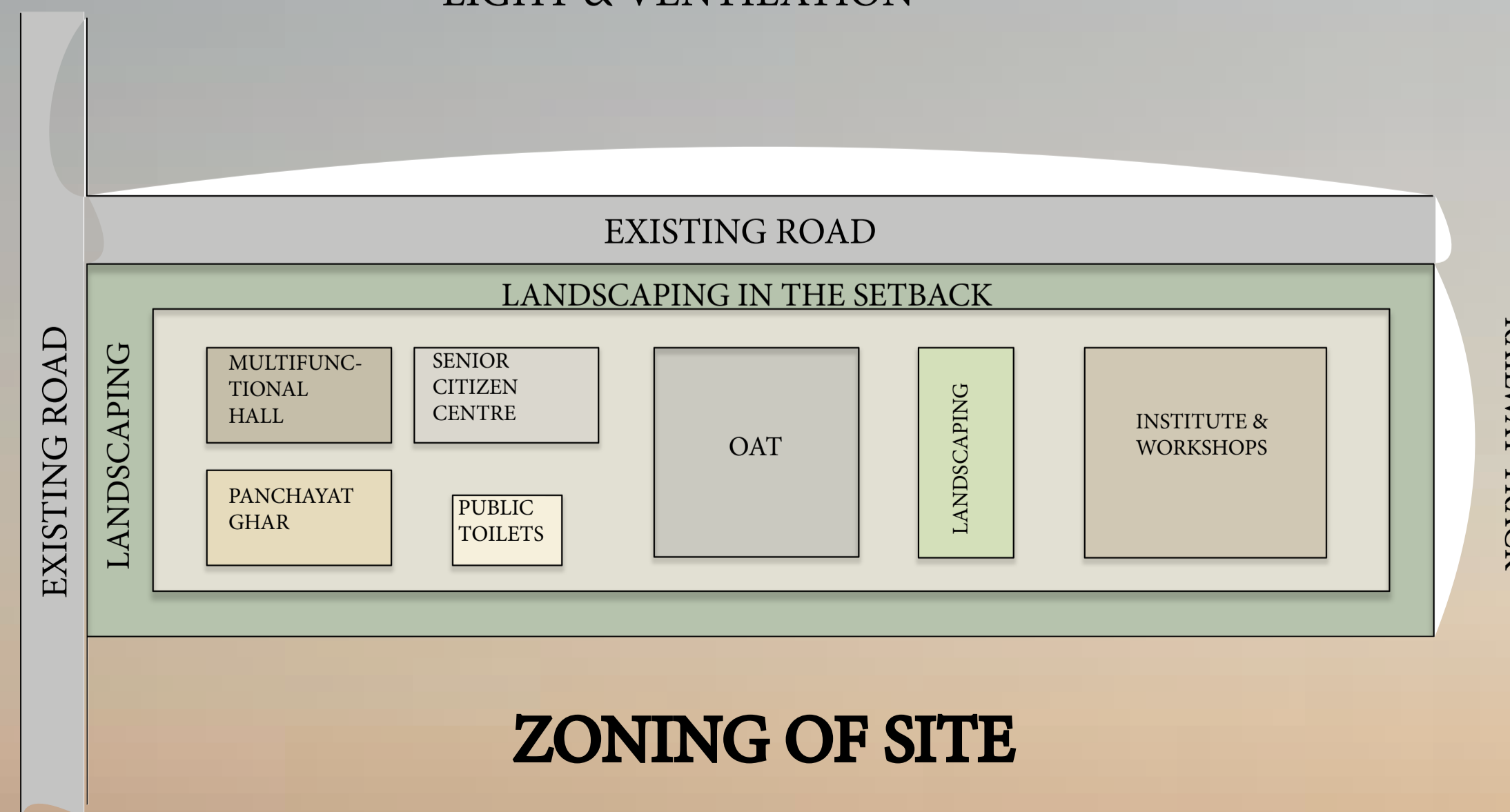
ENTRANCE HAVING PERGOLA WALKWAY COVERED WITH SERIES OF ARCHES



CENTRALLY LOCATED OAT WITH RECESSED PLANE AND GREEN SPACES



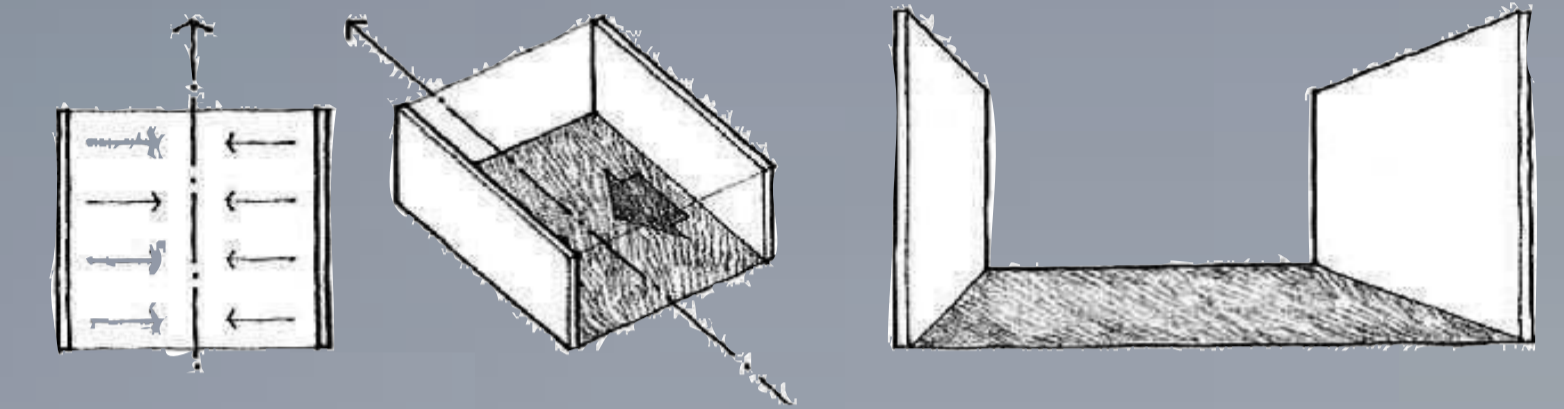
INSTITUTE & WORKSHOPS HAVING INTERNAL COURTYARDS PROVIDING NATURAL LIGHT & VENTILATION



ZONING OF SITE

*INTERACTION

- LINEAR FORM HAVING SPATIAL & ADJACENT RELATIONSHIP AMONG THE ELEMENTS
- USE OF PARALLEL VERTICAL PLANES



- PARALLEL PLANES DO NOT MEET TO FORM CORNERS, CREATE SPACES THAT ARE EXTROVERTED IN NATURE I.E. INVITING

*VERNACULAR CONTEXT

- INSPIRATION FROM VILLAGE'S COMMON ARCHITECTURAL ELEMENTS

- **ARCHES**
- SEMI CIRCULAR ARCH TAKEN INTO VAULT ROOF
- **NICHES**
- RECESSED SURFACES
- IDEA TO HAVE OAT WITH RECESSED PLANE



- SERIES OF ARCHES ARE ALSO PROVIDED AS AN INVITING ELEMENT IN FORM OF A PERGOLA WALKWAY.

- INSPIRATION FROM TRADITIONAL RESIDENCES WITH INTERNAL COURTYARDS