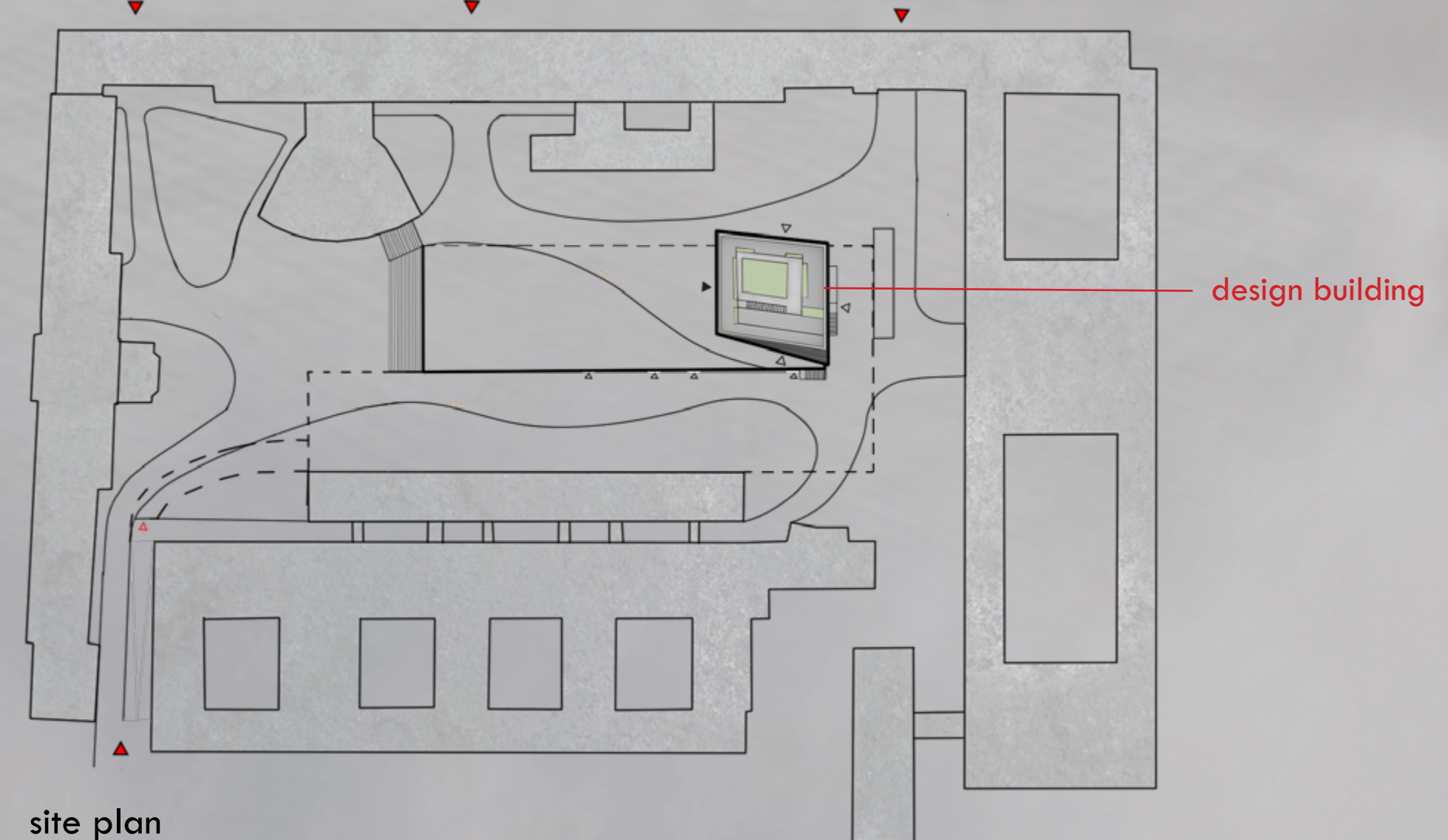
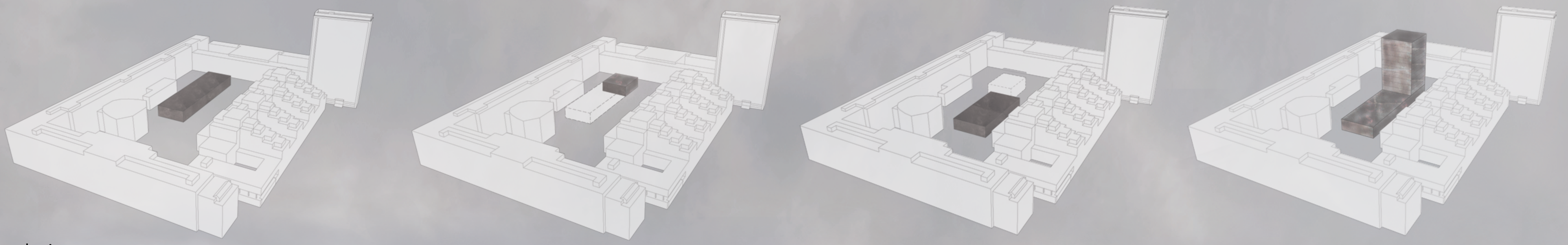


front view



site plan



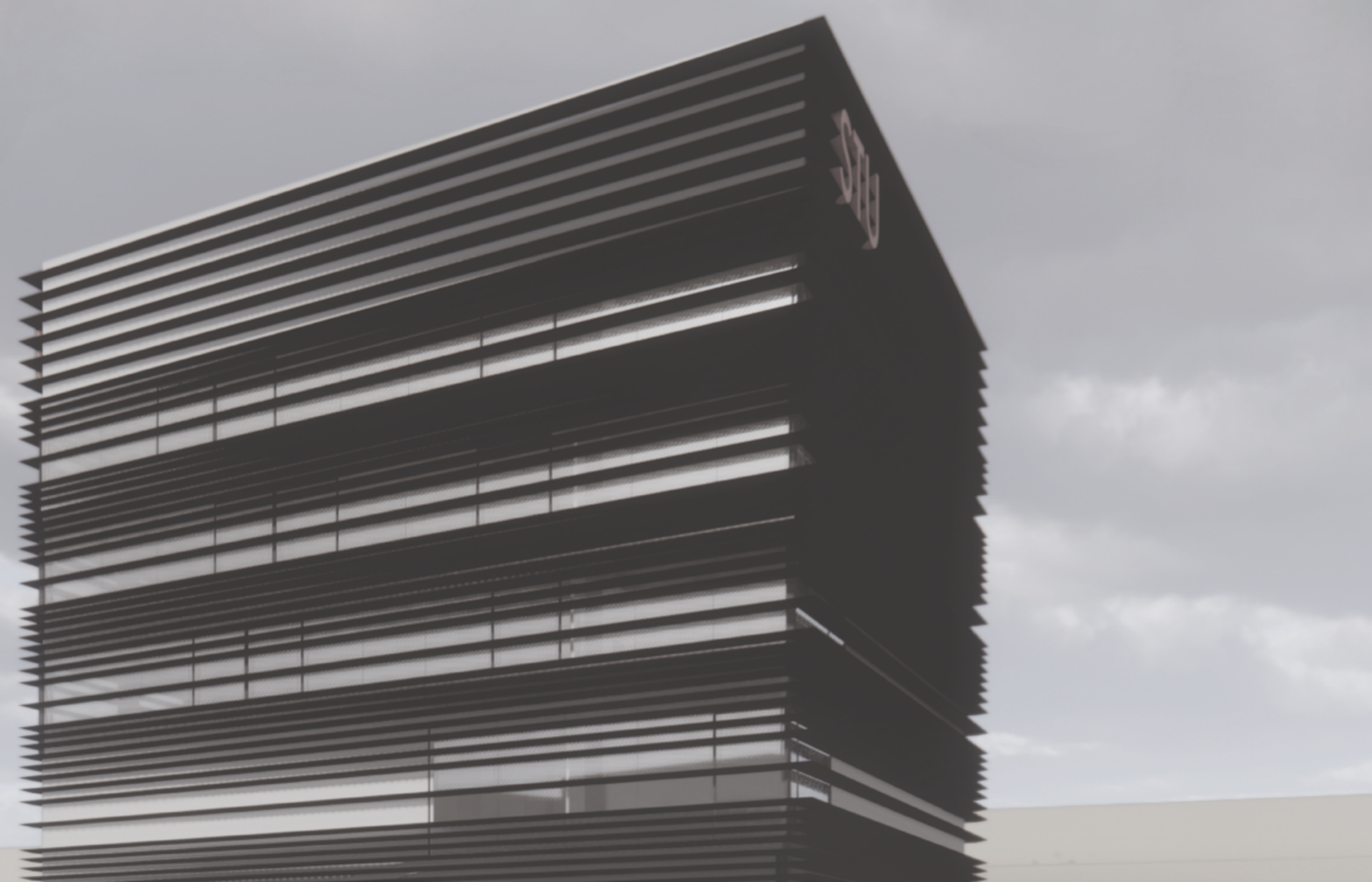
phasing

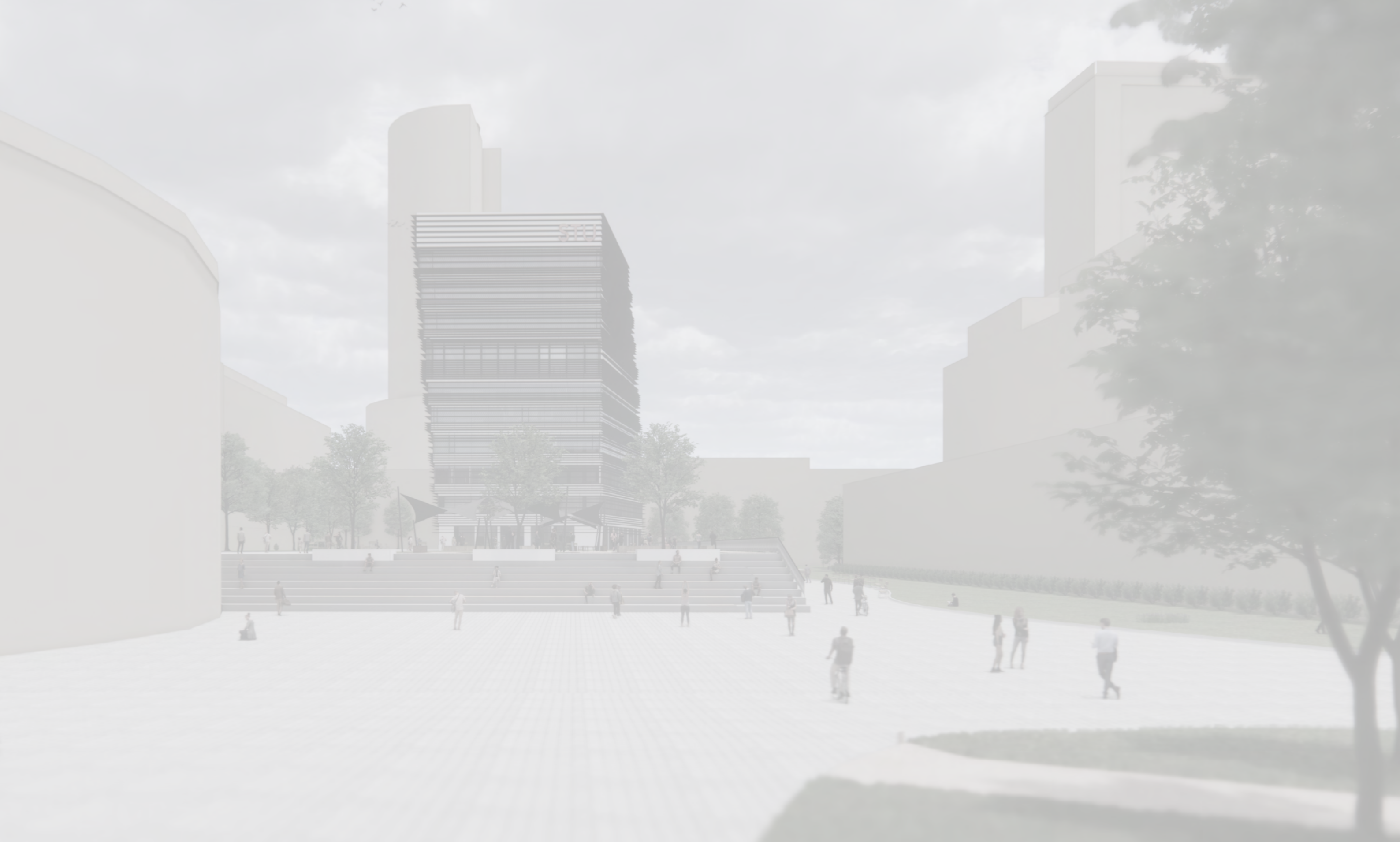
# STU Tower

My architectonic solution creates new dominating feature in this area, with creation of multiple open spaces available for university usage in different ways. First idea of the concept had to deal with the building with heavy laboratories, which I decided to demolish. This process is divided into two phases. In the first phase, new individual building will be built for these laboratories. This building will be in different area from the previous one and will fit into terrain. Following this heavy machinery will be relocated into the new building. In the second phase the old laboratories will be demolished, and, in its place, new high-rise building will be built in the centre of the area, connected to the newly built laboratories and with underground garage. With its height of 45 metres, it breaks the height limit, however, it will fit with two already existing high-rise building which are even higher, and thanks to many floors it will provide, it creates an open space in the campus turning it into much more attractive space for people, like plaza.

Visually, this new high-rise building reminds of double threaded spiral, like the structure of DNA, whose primary purpose is to store and spread information, which is also the main goal of university. Metaphorically speaking, spiral fibres represent public and university domain and connections that they are interlinked with are students, teachers, investors, and futures students. This represents the primary idea of my concept, creating a space where the university domain relates to public one with the purpose of creation of space for students and the future generations, and to create a building that is representative enough for STU and would serve as an advertisement of university, noticeable and intriguing for public with its height.

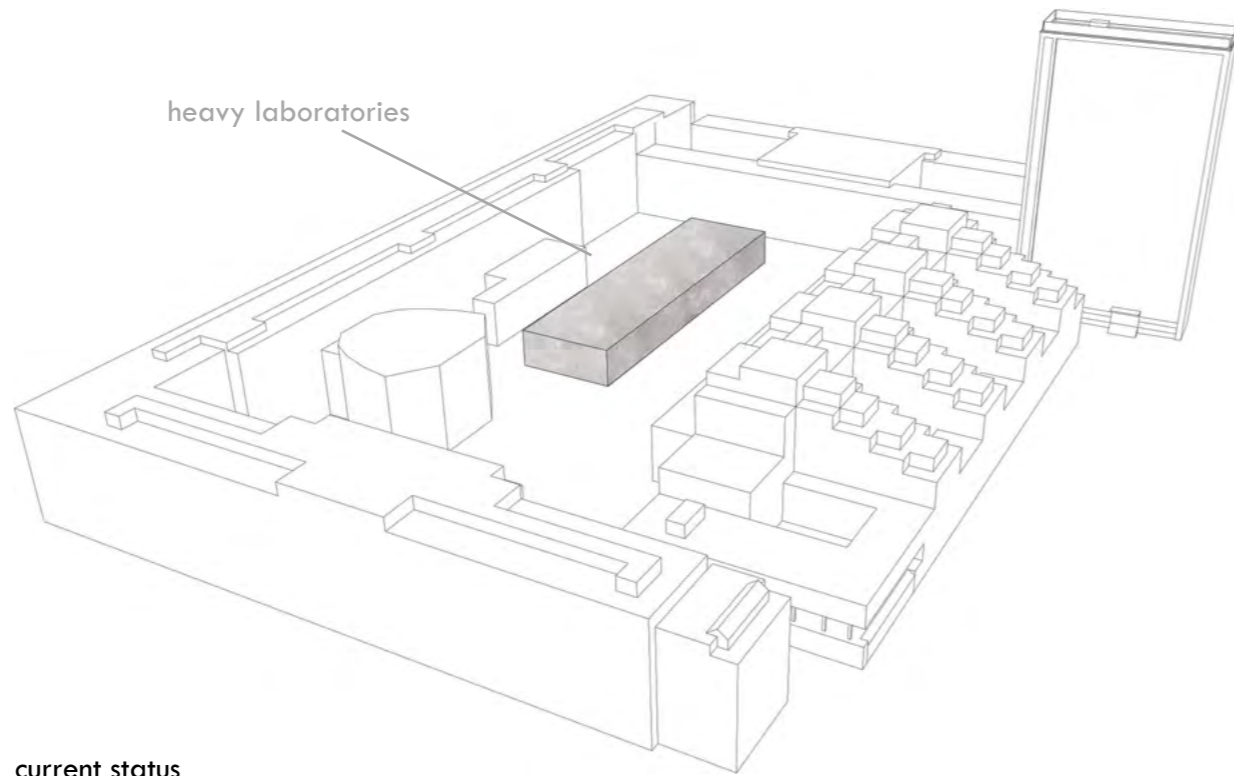
Author: Tomáš Jurko School: Faculty of Civil Engineering, University of technology, Brno



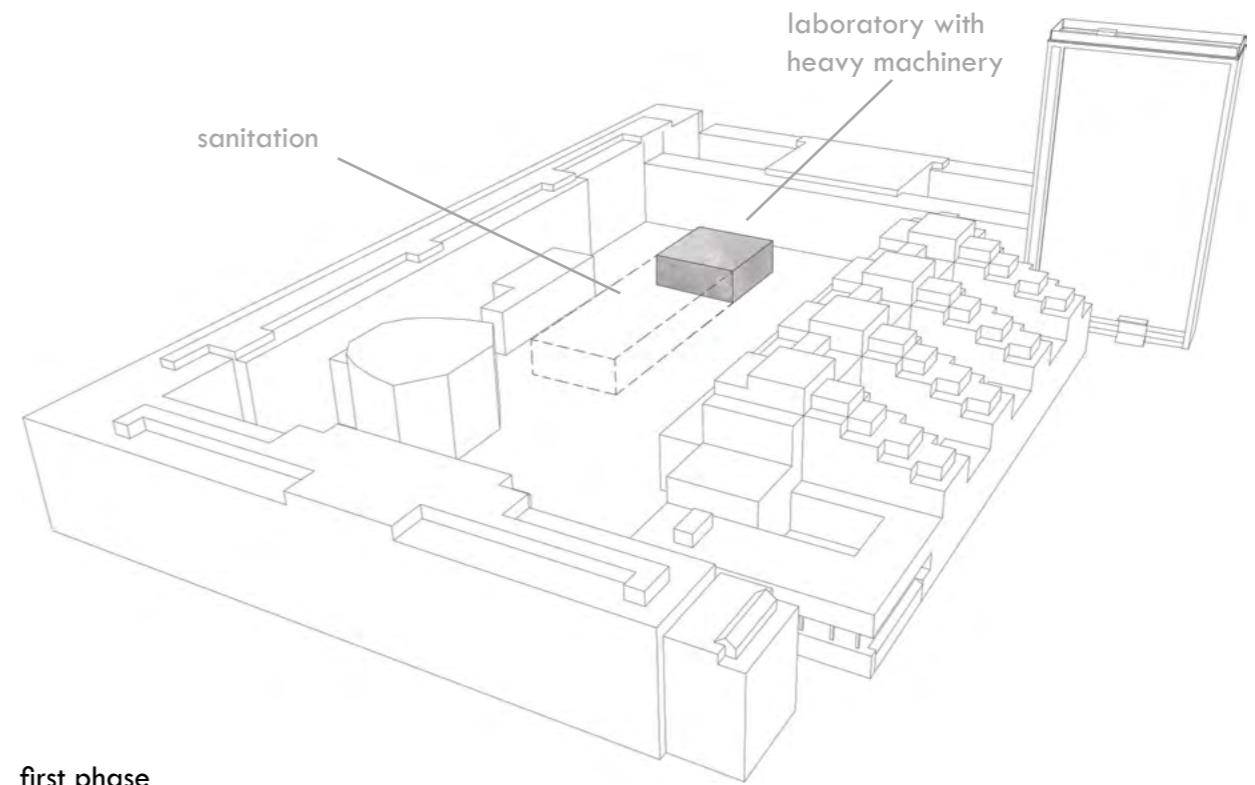


# STU Tower Bratislava

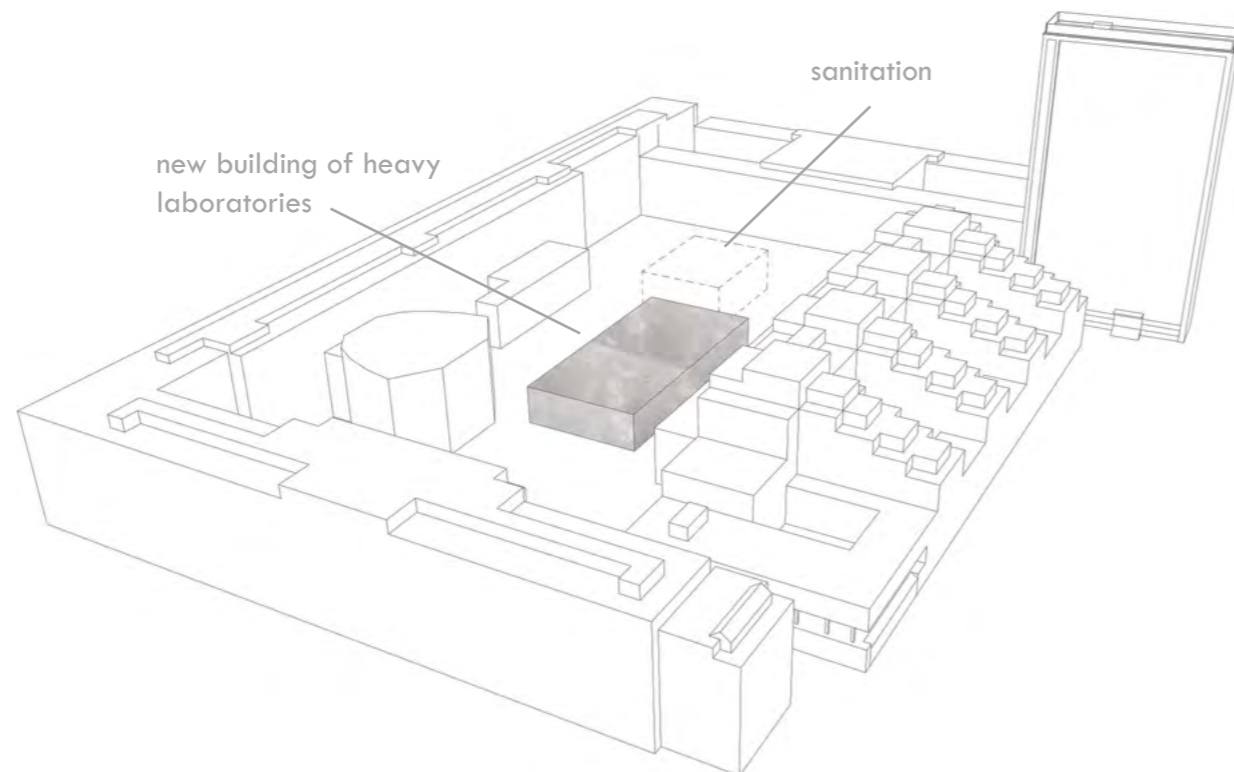
author: Tomáš Jurko university: Faculty of Civil Engineering, University of technology, Brno



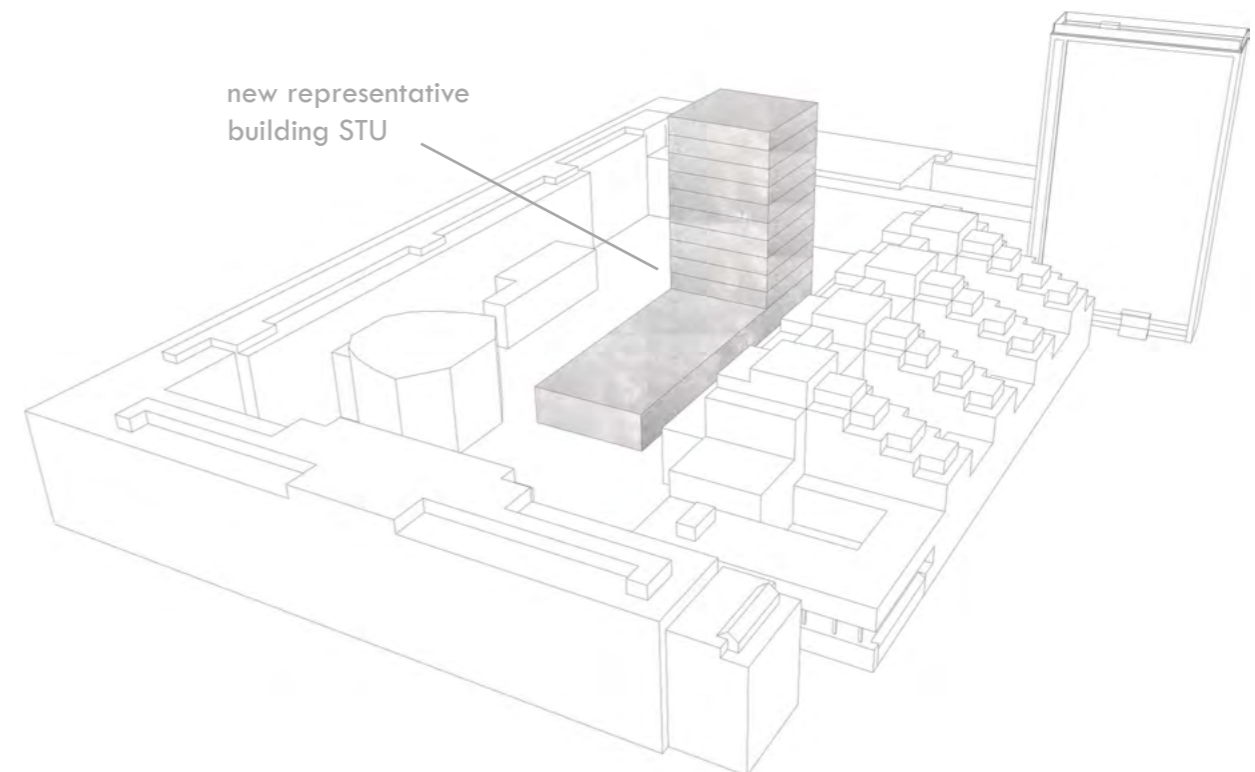
current status



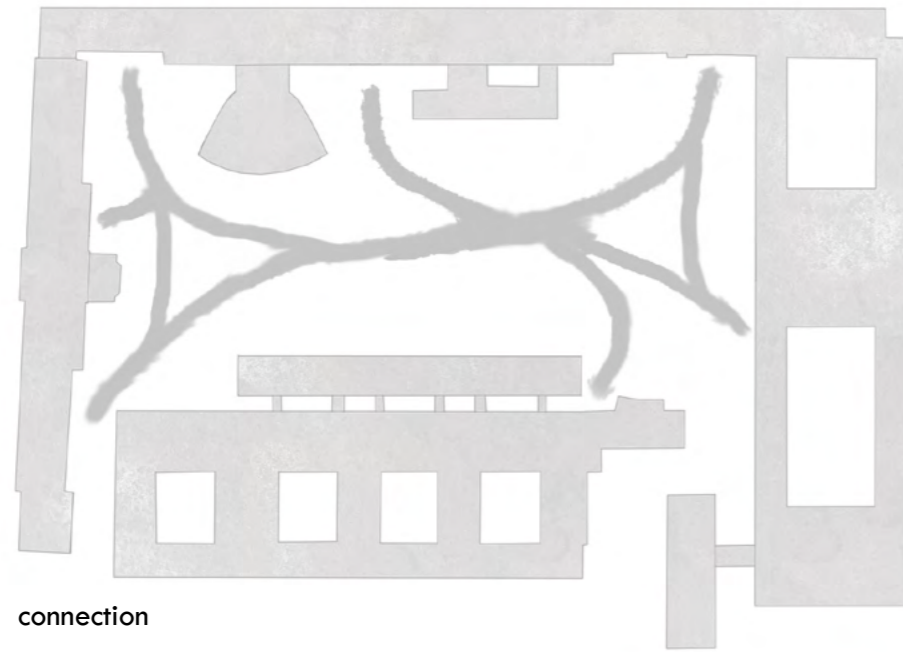
first phase



second phase - involves the transfer of heavy machinery



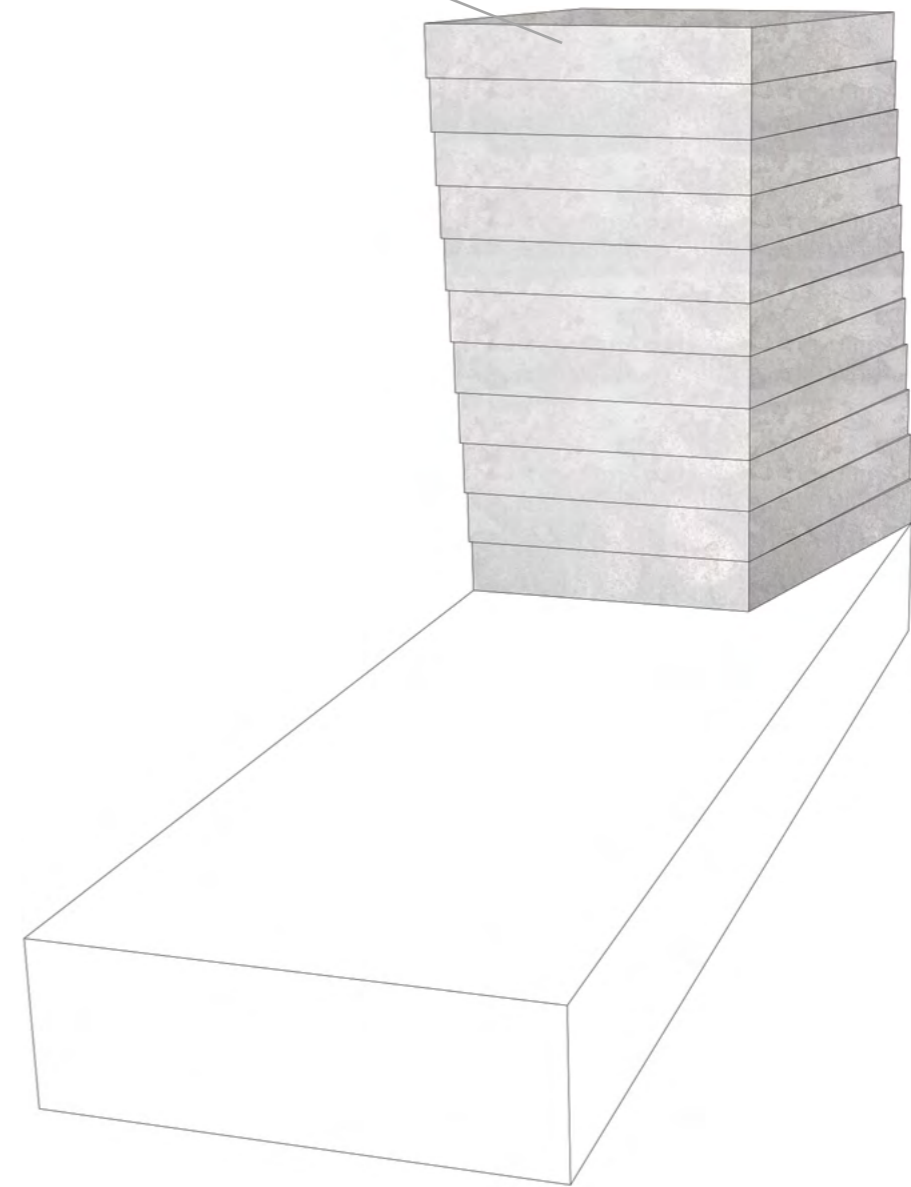
third phase

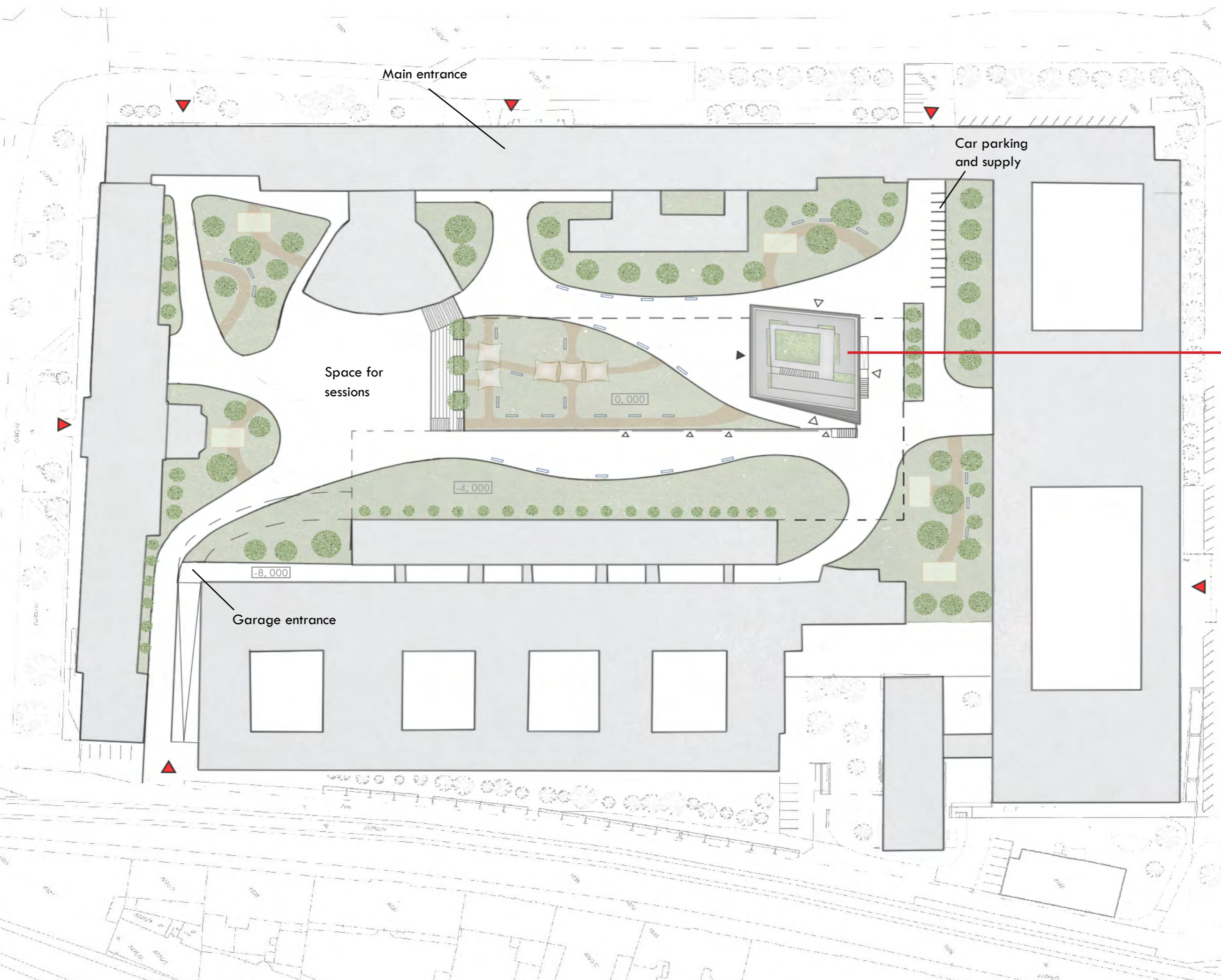


My architectonic solution creates new dominating feature in this area, with creation of multiple open spaces available for university usage in different ways. First idea of the concept had to deal with the building with heavy laboratories, which I decided to demolish. This process is divided into two phases. In the first phase, new individual building will be built for these laboratories. This building will be in different area from the previous one and will be fit into terrain. Following this heavy machinery will be relocated into the new building. In the second phase the old laboratories will be demolished, and, in its place, new high-rise building will be built in the centre of the area, connected to the newly built laboratories and with underground garage. With its height of 45 metres, it breaks the height limit, however, it will fit with two already existing high-rise building which are even higher, and thanks to many floors it will provide, it creates an open space in the campus turning it into much more attractive space for people, like plaza.

Visually, this new high-rise building reminds of double threaded spiral, like the structure of DNA, whose primary purpose is to store and spread information, which is also the main goal of university. Metaphorically speaking, spiral fibres represent public and university domain and connections that they are interlinked with are students, teachers, investors, and futures students. This represents the primary idea of my concept, creating a space where the university domain relates to public one with the purpose of creation of space for students and the future generations, and to create a building that is representative enough for STU and would serve as an advertisement of university, noticeable and intriguing for public with its height.

rotation of representative buildings





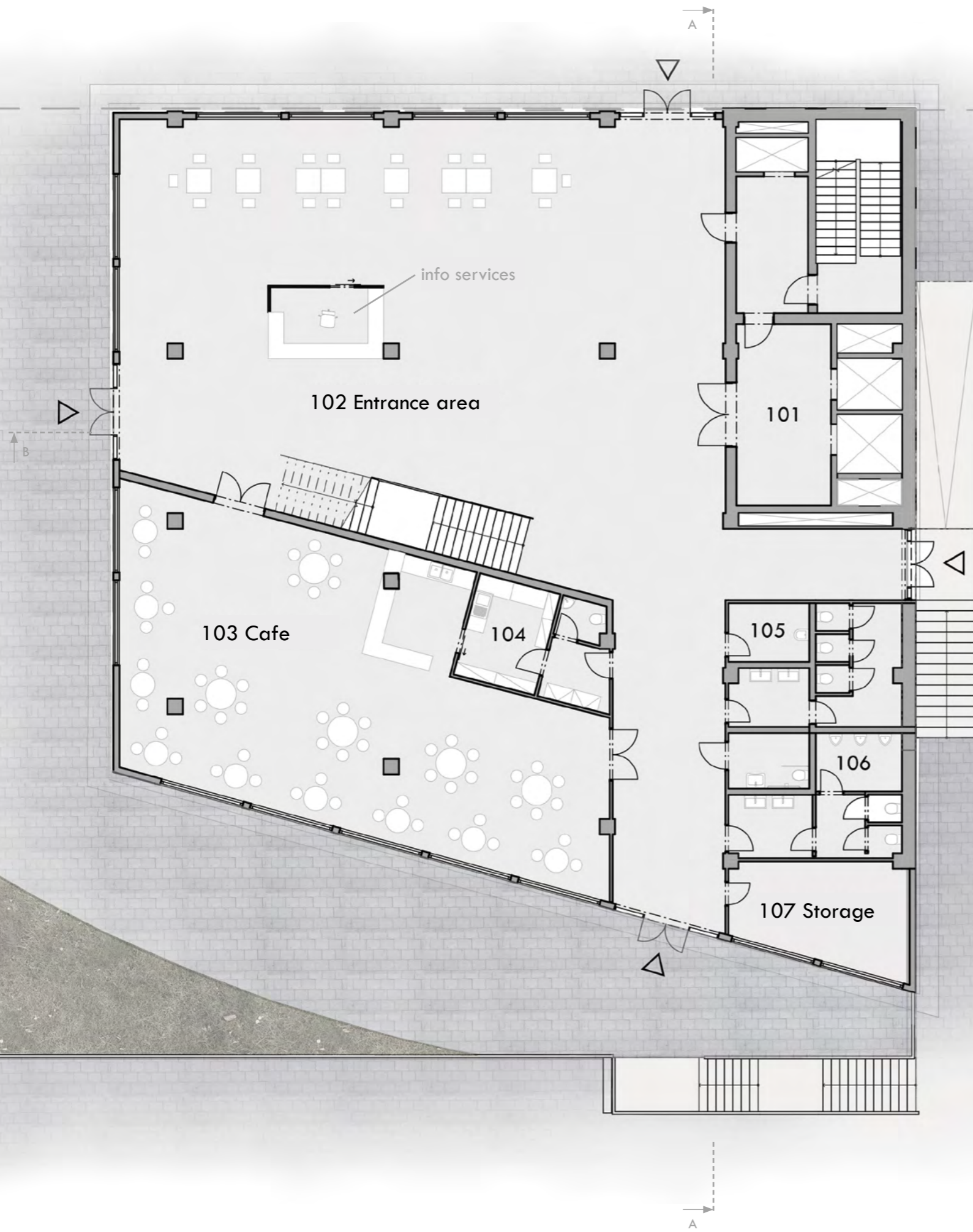
Design building

- 0,000 = 147 m.n.m.
- current buildings
- new solid paths
- new unstable paths
- new grassy surfaces
- outdoor roof for learning
- new benches
- sun shade sail
- new trees
- mainly entrance
- side entrances
- entrances to the area

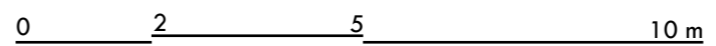
0 10 30 50 m

Site plan





|  |                      |
|--|----------------------|
| 101 Core - elevators, stairs                     | 66.2 m <sup>2</sup>  |
| 102 Entrance area, info services                 | 324.7 m <sup>2</sup> |
| 103 Cofe   | 133.5 m <sup>2</sup> |
| 104 Cofe background - dressing room, wc, kitchen | 15.9 m <sup>2</sup>  |
| 105 Cleaning                                     | 5 m <sup>2</sup>     |
| 106 Toilets                                      | 40.5 m <sup>2</sup>  |
| 107 Storage                                      | 18.6 m <sup>2</sup>  |

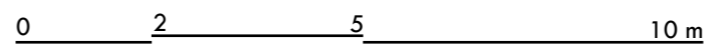


Floor plan level 1



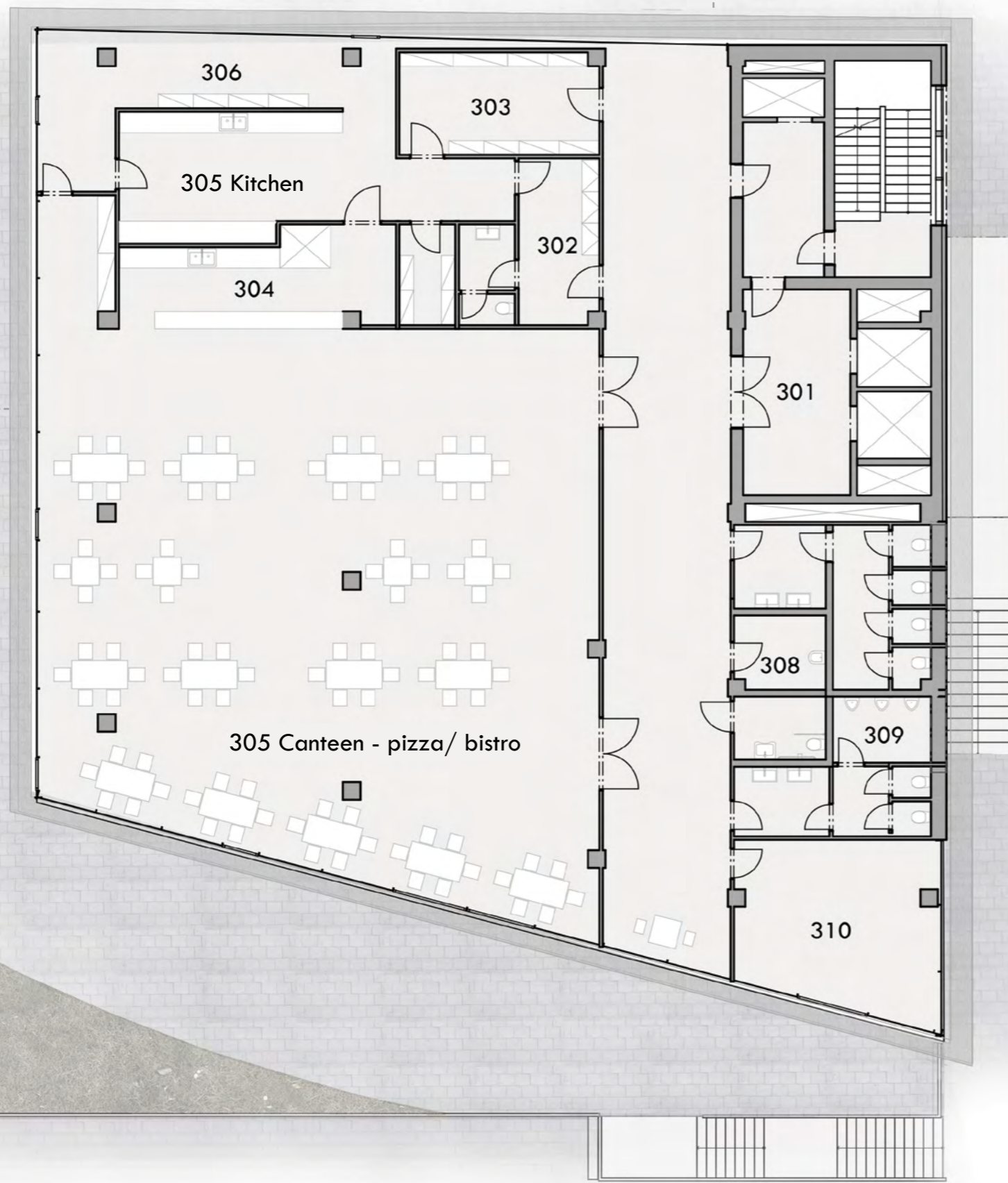


|                                |                      |
|--------------------------------|----------------------|
| 201 Core - elevators, stairs   | 66.2 m <sup>2</sup>  |
| 202-208 Administrative offices | 430.1 m <sup>2</sup> |
| 209 Meeting room               | 47.2 m <sup>2</sup>  |
| 210 Administrative office      | 19.3 m <sup>2</sup>  |
| 211 Kitchen                    | 20.5 m <sup>2</sup>  |
| 212 Toilets                    | 36.9 m <sup>2</sup>  |
| 213 Cleaning                   | 2.5 m <sup>2</sup>   |

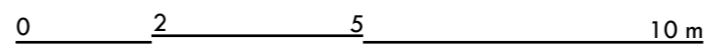


Floor plan level 2





|                               |                      |
|-------------------------------|----------------------|
| 301 Core - elevators, stairs  | 66.2 m <sup>2</sup>  |
| 302 Dressing room             | 11.3 m <sup>2</sup>  |
| 303 Storage                   | 16.8 m <sup>2</sup>  |
| 304 Bar                       | 20.4 m <sup>2</sup>  |
| 305 Kitchen                   | 33.9 m <sup>2</sup>  |
| 306 Cleaning and dish storage | 27.1 m <sup>2</sup>  |
| 307 Canteen - pizza           | 249.3 m <sup>2</sup> |
| 308 Cleaning                  | 5.4 m <sup>2</sup>   |
| 309 Toilets                   | 43.1 m <sup>2</sup>  |
| 310 Storage                   | 28.5 m <sup>2</sup>  |

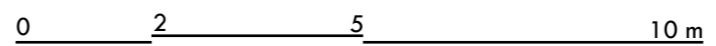


Floor plan level 3





|                              |                      |
|------------------------------|----------------------|
| 401 Core - elevators, stairs | 66.2 m <sup>2</sup>  |
| 402 Workshops                | 237.1 m <sup>2</sup> |
| 403 PC Servers               | 9.8 m <sup>2</sup>   |
| 404 Study rooms - ateliers   | 130.7 m <sup>2</sup> |
| 405 Cleaning                 | 2.5 m <sup>2</sup>   |
| 406 Toilets                  | 36.9 m <sup>2</sup>  |
| 407 Study rooms              | 38.6 m <sup>2</sup>  |



Floor plan level 4



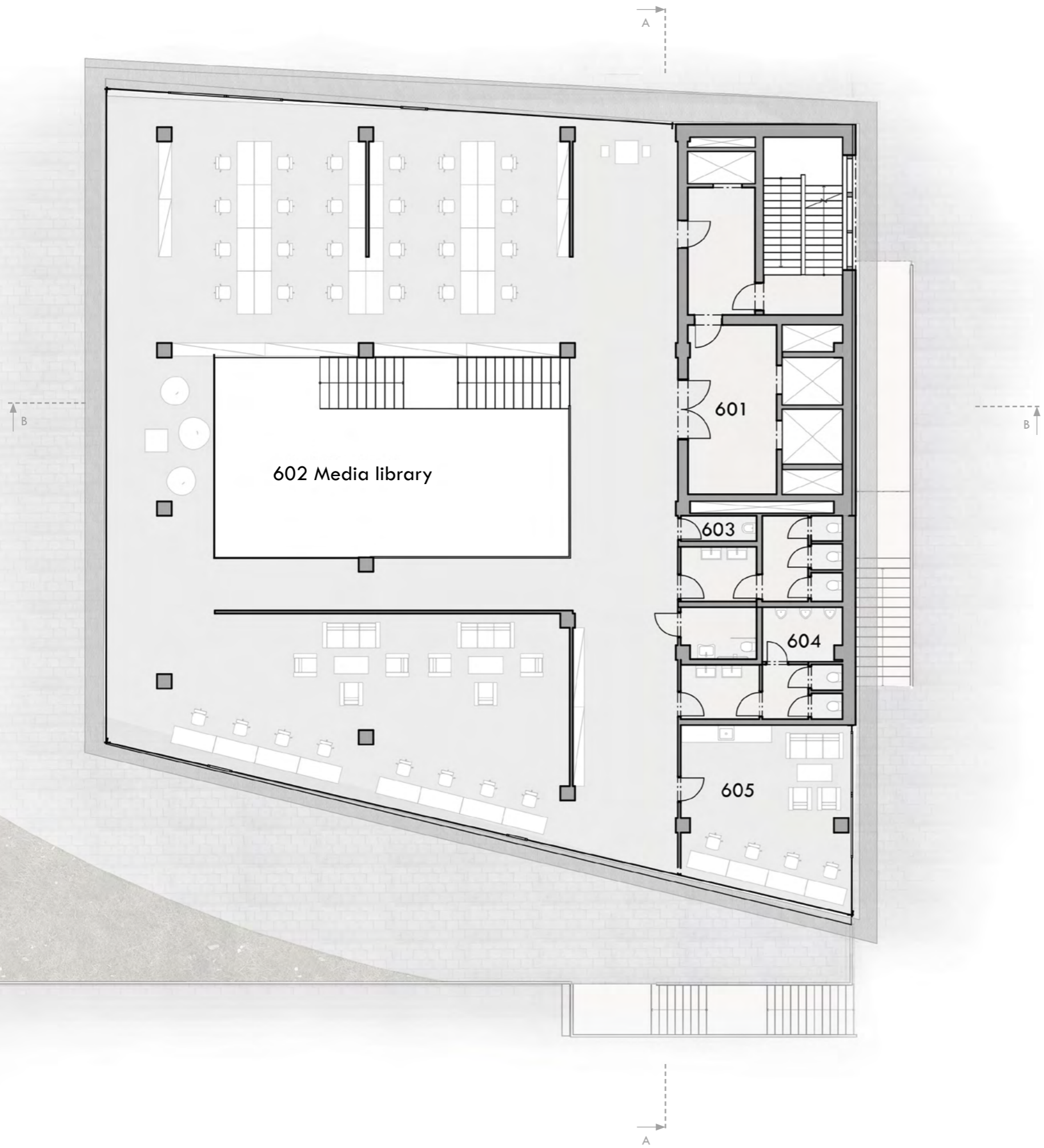


|                              |                      |
|------------------------------|----------------------|
| 501 Core - elevators, stairs | 66.2 m <sup>2</sup>  |
| 502 Media library            | 776.9 m <sup>2</sup> |
| 503 Cleaning                 | 5.4 m <sup>2</sup>   |
| 504 Toilets                  | 43.1 m <sup>2</sup>  |
| 505 Storage                  | 26.1 m <sup>2</sup>  |

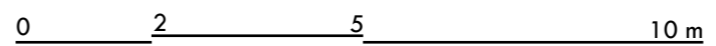
0 2 5 10 m

Floor plan level 5





|                              |                      |
|------------------------------|----------------------|
| 601 Core - elevators, stairs | 66.2 m <sup>2</sup>  |
| 602 Media library            | 776.9 m <sup>2</sup> |
| 603 Cleaning                 | 2.5 m <sup>2</sup>   |
| 604 Toilets                  | 36.9 m <sup>2</sup>  |
| 605 Study room               | 35.1 m <sup>2</sup>  |



Floor plan level 6





|                                    |                      |
|------------------------------------|----------------------|
| 701 Core - elevators, stairs       | 66.2 m <sup>2</sup>  |
| 702 Social space - conference hall | 206.5 m <sup>2</sup> |
| 703 Preparation room               | 10.8 m <sup>2</sup>  |
| 704 Technical background           | 36.7 m <sup>2</sup>  |
| 705 Cleaning                       | 5.4 m <sup>2</sup>   |
| 706 Toilets                        | 43.1 m <sup>2</sup>  |
| 707 Storage                        | 23.5 m <sup>2</sup>  |

0 2 5 10 m

Floor plan level 7



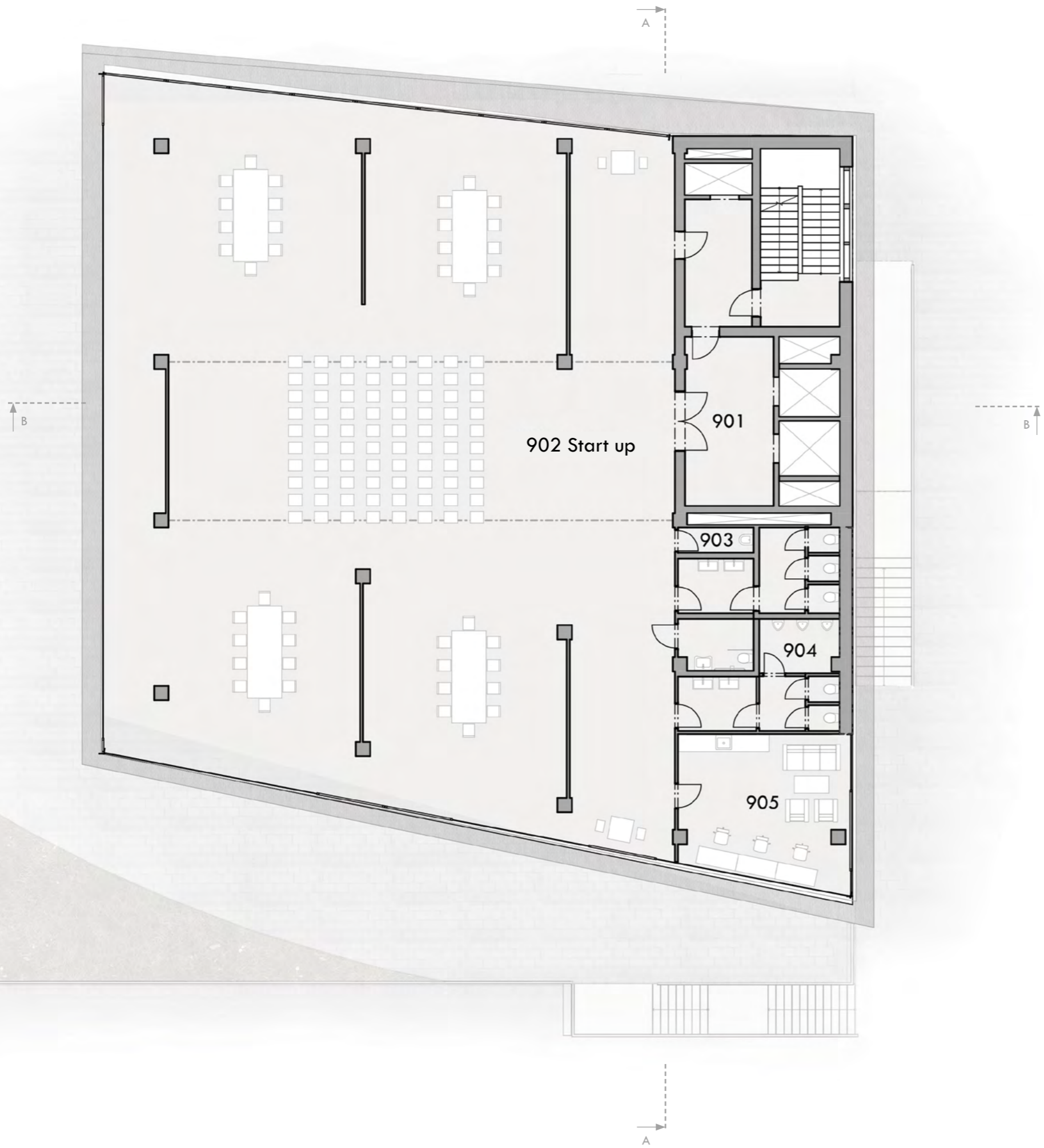


|                              |                      |
|------------------------------|----------------------|
| 801 Core - elevators, stairs | 66.2 m <sup>2</sup>  |
| 802 Exhibition space         | 776.9 m <sup>2</sup> |
| 803 Cleaning                 | 2.5 m <sup>2</sup>   |
| 804 Toilets                  | 36.9 m <sup>2</sup>  |
| 805 Storage                  | 31.2 m <sup>2</sup>  |

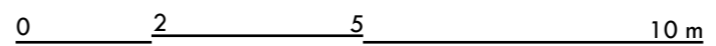
0 2 5 10 m

Floor plan level 18



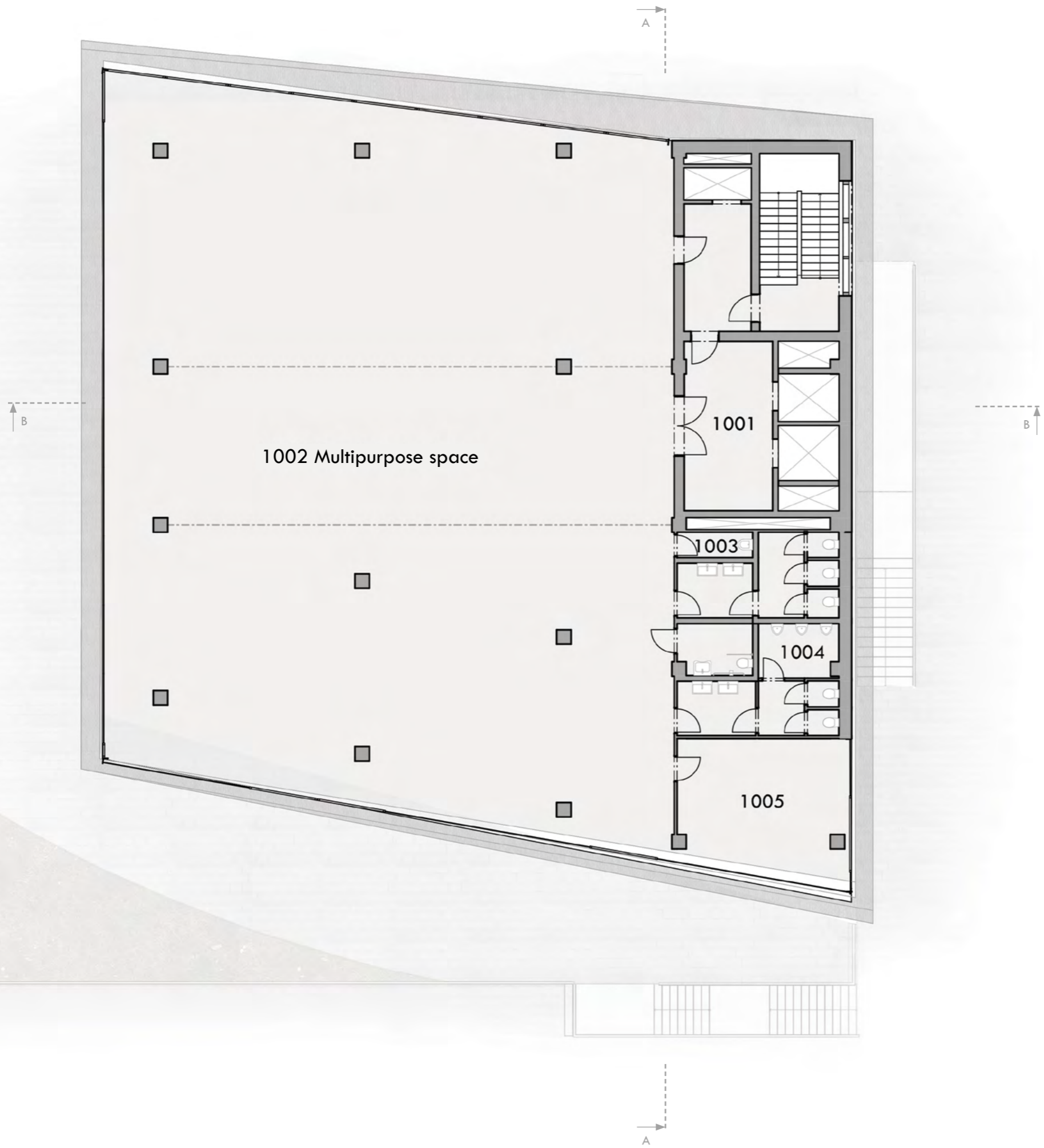


|                              |                      |
|------------------------------|----------------------|
| 901 Core - elevators, stairs | 66.2 m <sup>2</sup>  |
| 902 Start up centrum         | 776.9 m <sup>2</sup> |
| 903 Cleaning                 | 2.5 m <sup>2</sup>   |
| 904 Toilets                  | 36.9 m <sup>2</sup>  |
| 905 Kitchen                  | 30.5 m <sup>2</sup>  |



Floor plan level 9



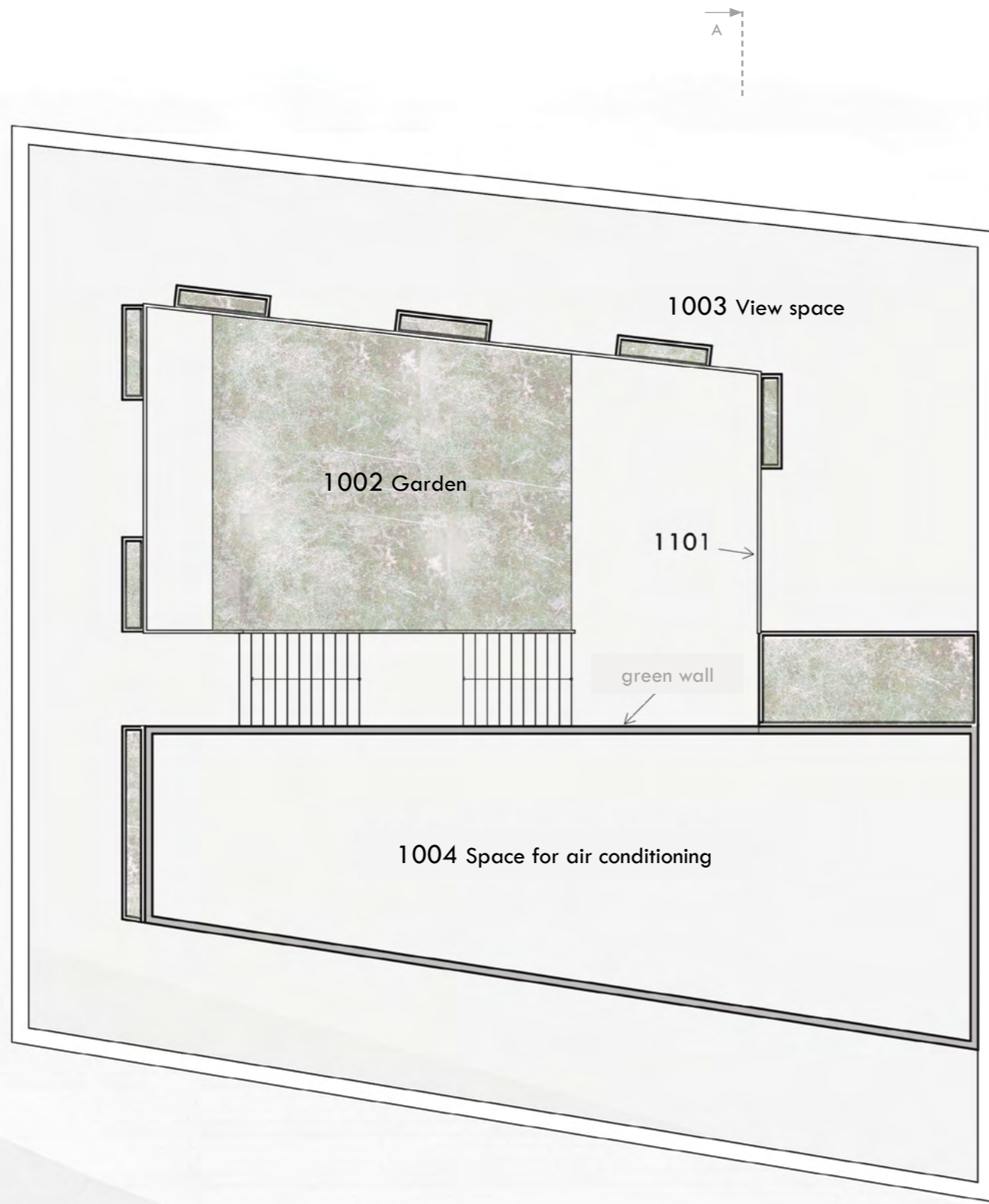


|                               |                      |
|-------------------------------|----------------------|
| 1001 Core - elevators, stairs | 66.2 m <sup>2</sup>  |
| 1002 Multipurpose space       | 776.9 m <sup>2</sup> |
| 1003 Cleaning                 | 2.5 m <sup>2</sup>   |
| 1004 Toilets                  | 36.9 m <sup>2</sup>  |
| 1005 Storage                  | 28.7 m <sup>2</sup>  |

0 2 5 10 m

Floor plan level 10



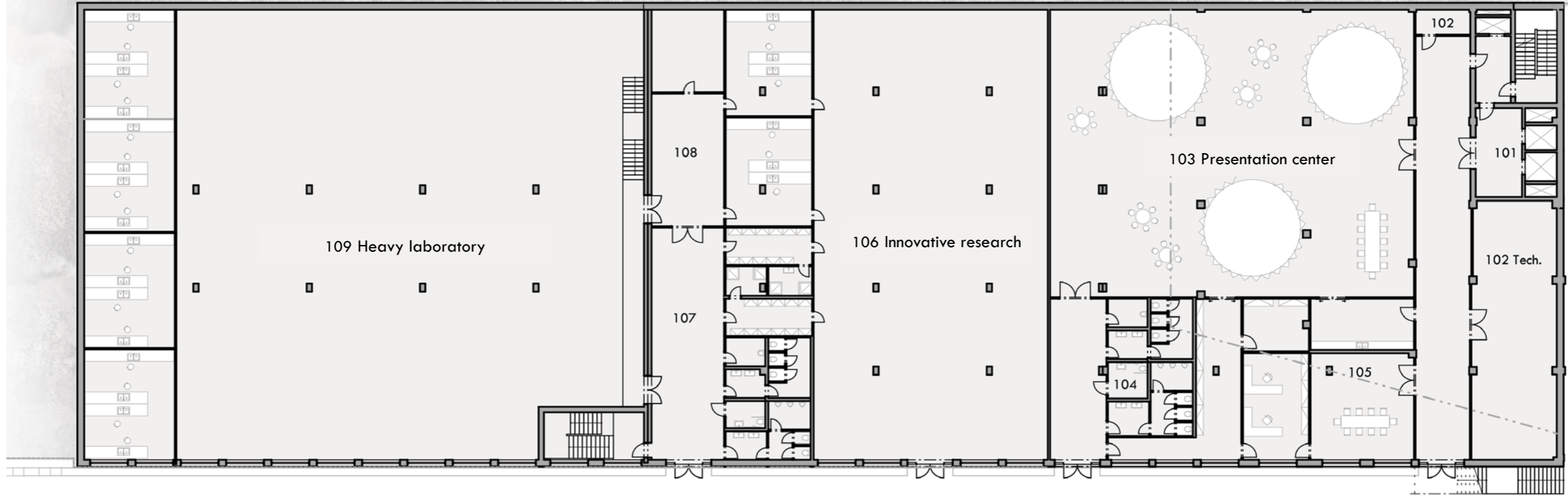


- 1101 Core - elevators, stairs
- 1102 Experimental garden
- 1103 View spaces
- 1104 Space for air conditioning

0 2 5 10 m

Roof plan



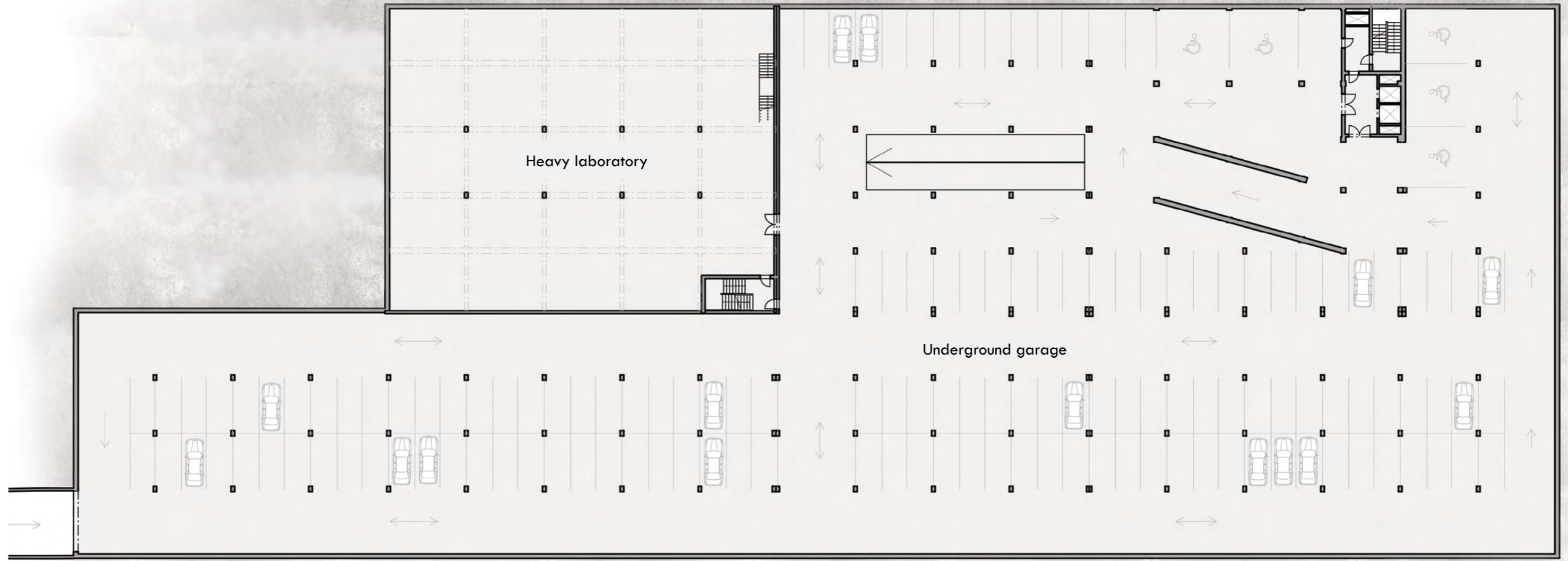


|   |                       |
|---|-----------------------|
| 101 Core - elevators, stairs                    | 66.2 m <sup>2</sup>   |
| 102 Technical background                        | 99.2 m <sup>2</sup>   |
| 103 Presentation center of science and research | 512.1 m <sup>2</sup>  |
| 104 Toilets                                     | 53.6 m <sup>2</sup>   |
| 105 Cooperation with practice                   | 154.3 m <sup>2</sup>  |
| 106 Innovative interdisciplinary research       | 464.9 m <sup>2</sup>  |
| 107 Research background                         | 163.3 m <sup>2</sup>  |
| 108 Laboratory                                  | 154.7 m <sup>2</sup>  |
| 109 Heavy laboratory                            | 1101.6 m <sup>2</sup> |

0 2 5 10 m

Floor plan level -1



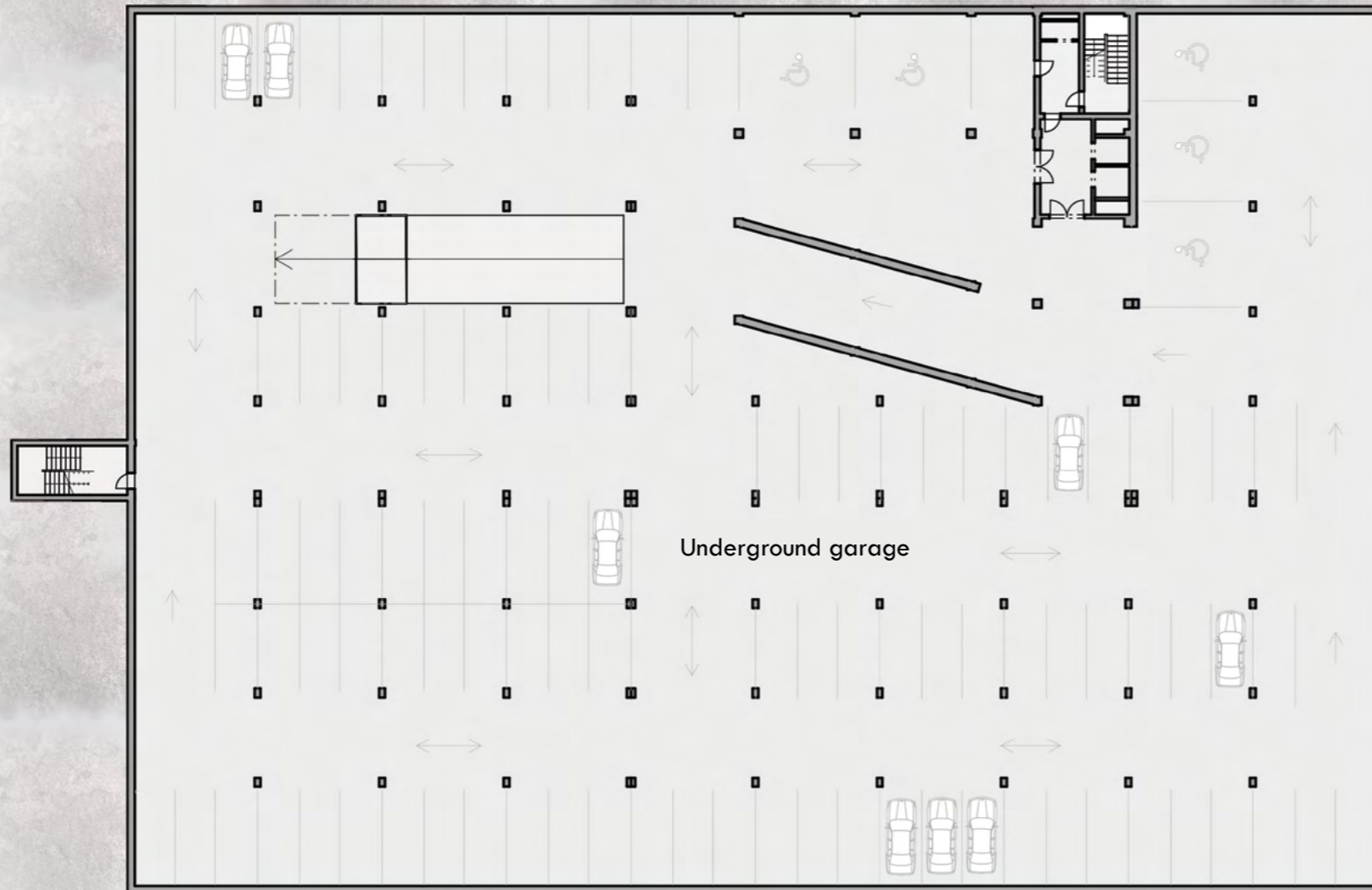


|                            |                       |
|----------------------------|-----------------------|
| Underground garage         | 5636.6 m <sup>2</sup> |
| Number of parking spaces:  | 150                   |
| Number of indavald spaces: | 5                     |

0 2 5 10 m

Floor plan level -2





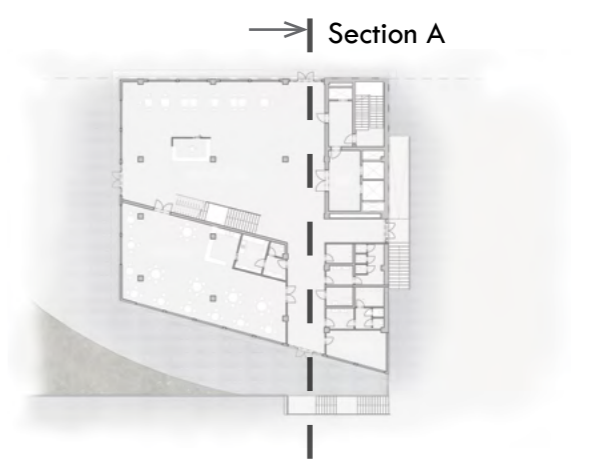
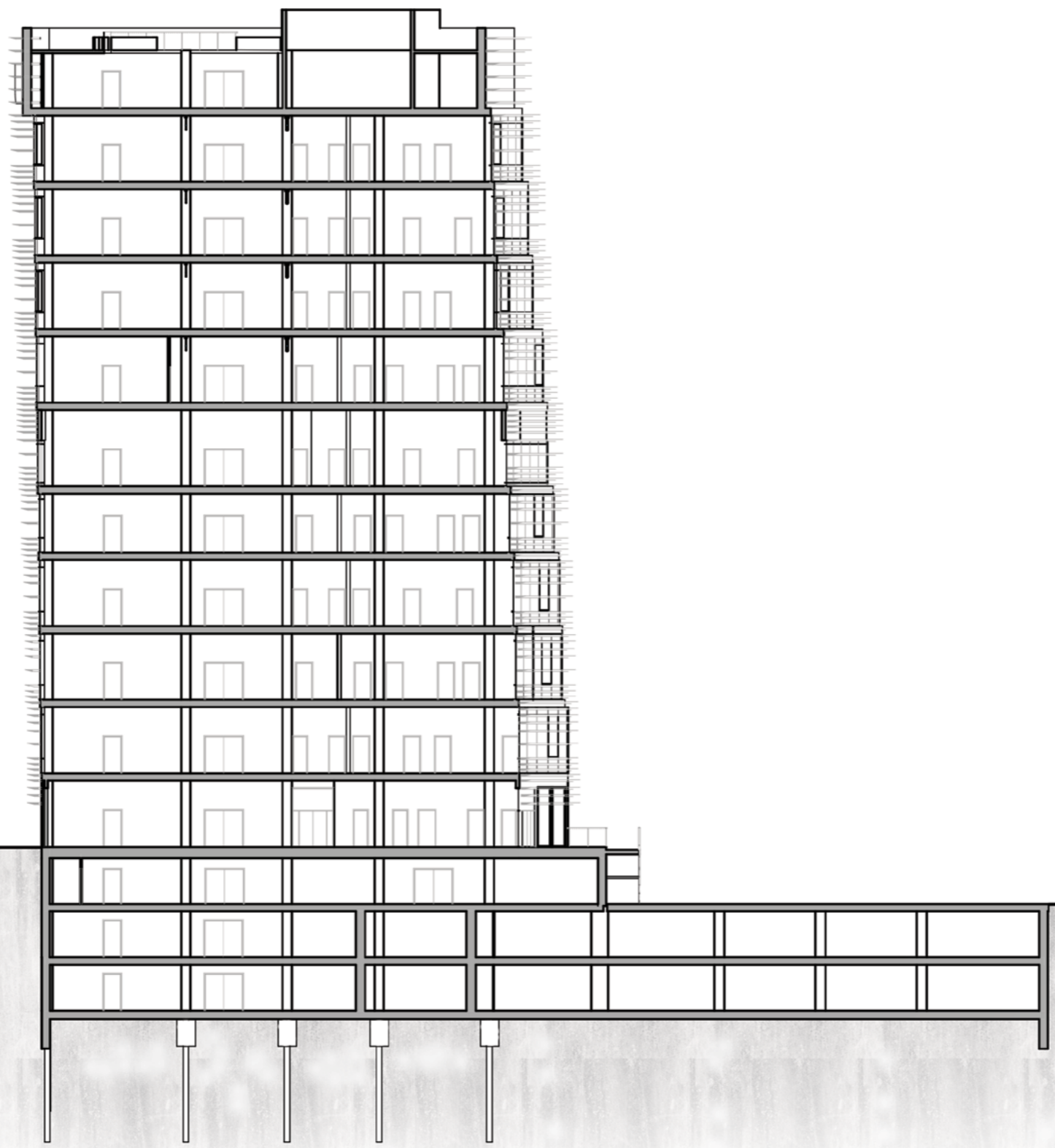
|                            |                       |
|----------------------------|-----------------------|
| Underground garage         | 4052.5 m <sup>2</sup> |
| Number of parking spaces:  | 105                   |
| Number of indavald spaces: | 5                     |

0 2 5 10 m

Floor plan level -3

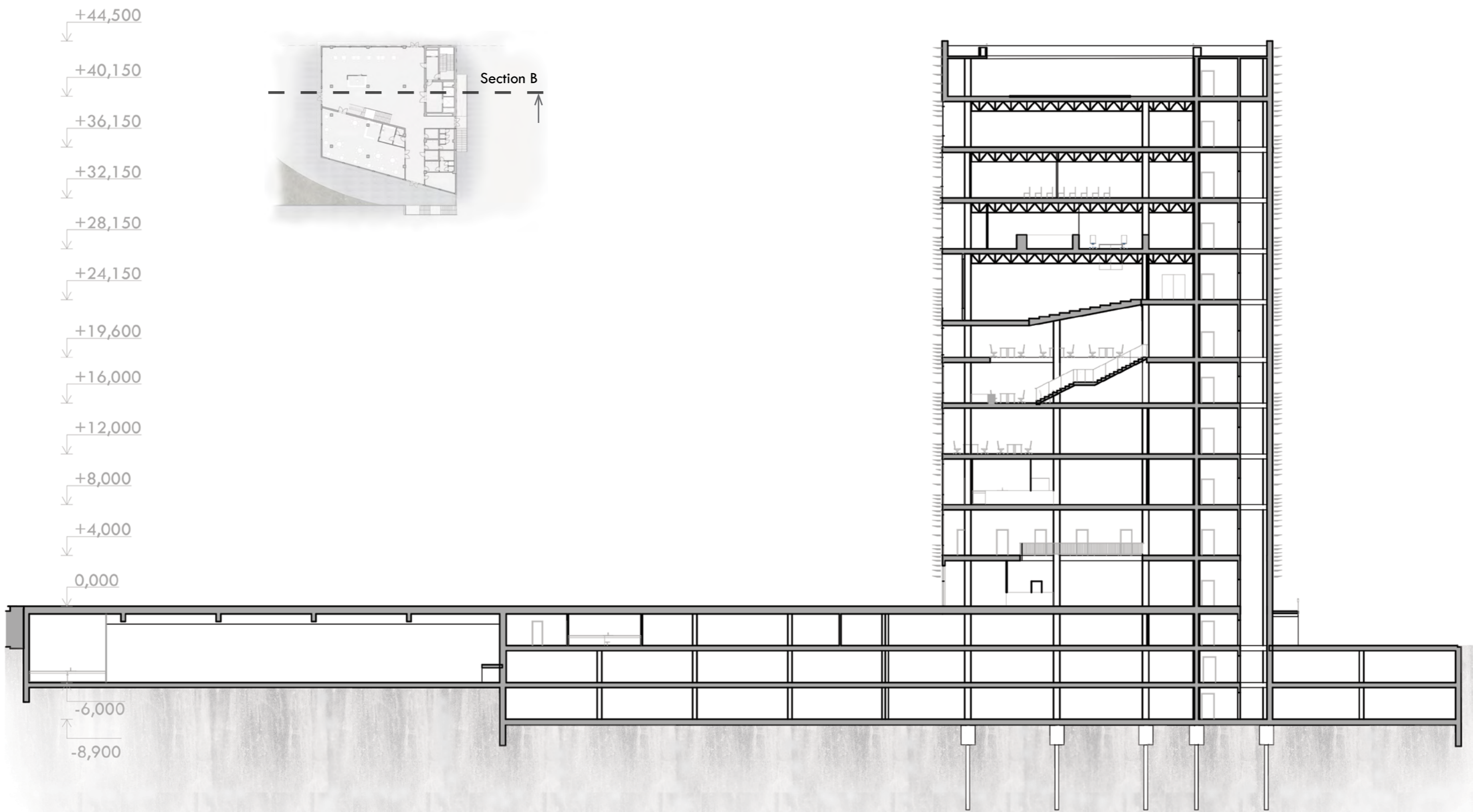


+45,500  
↓  
+40,150  
↓  
+36,150  
↓  
+32,150  
↓  
+28,150  
↓  
+24,150  
↓  
+19,600  
↓  
+16,000  
↓  
+12,000  
↓  
+8,000  
↓  
+4,000  
↓  
0,000  
↓  
-3,200  
↓  
-6,000  
↓  
-8,900  
↓



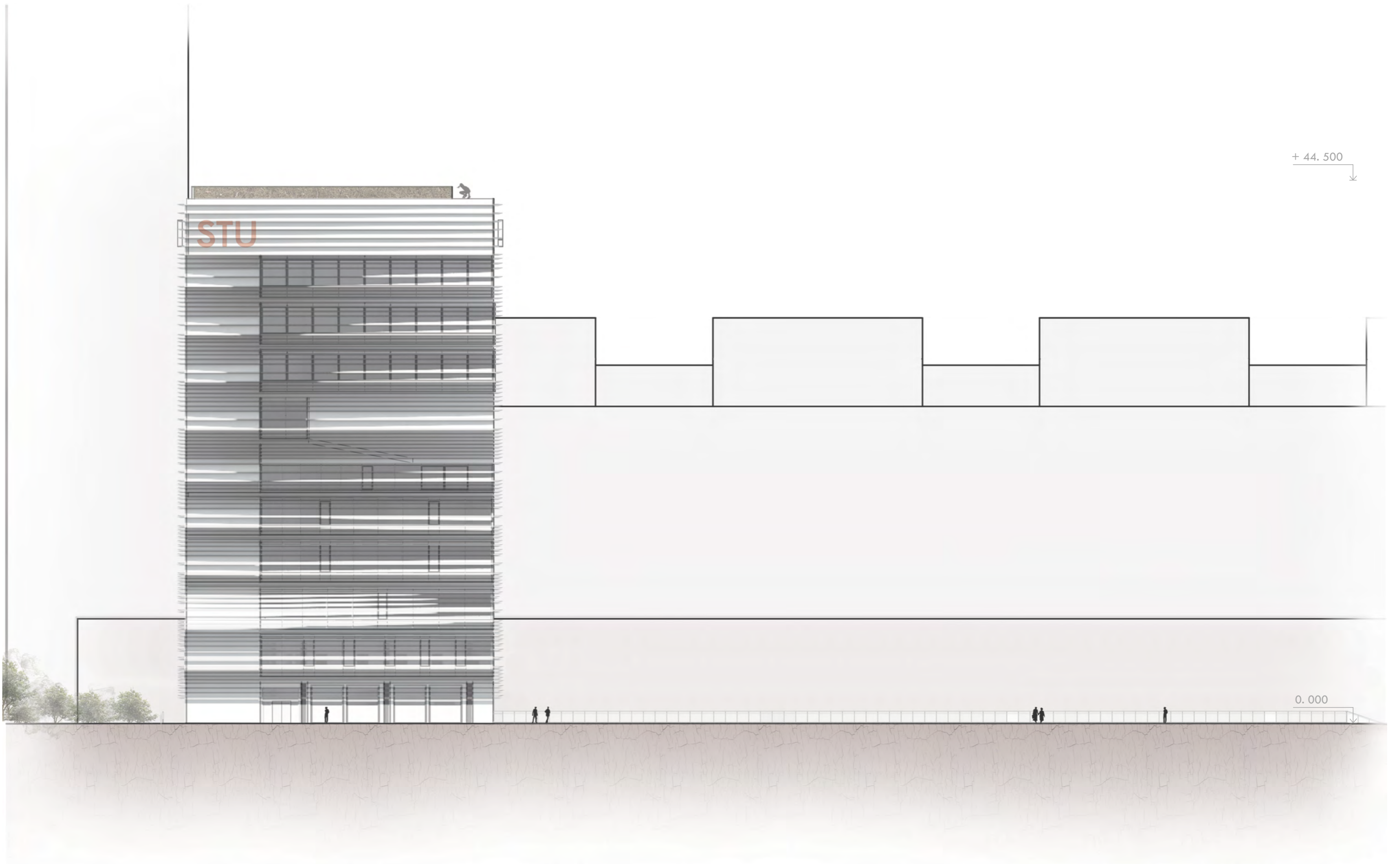
Section A

Section A

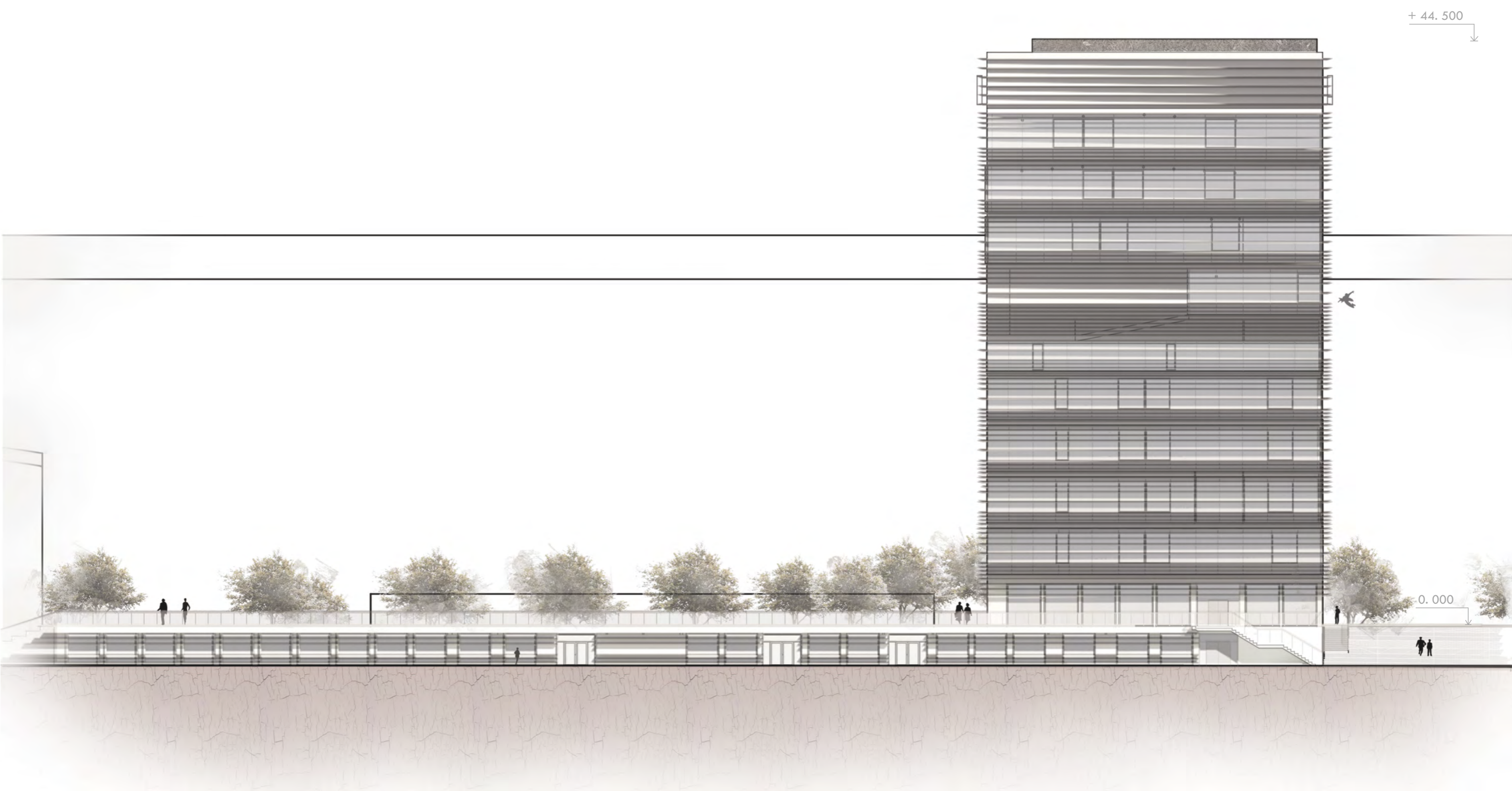


Section B

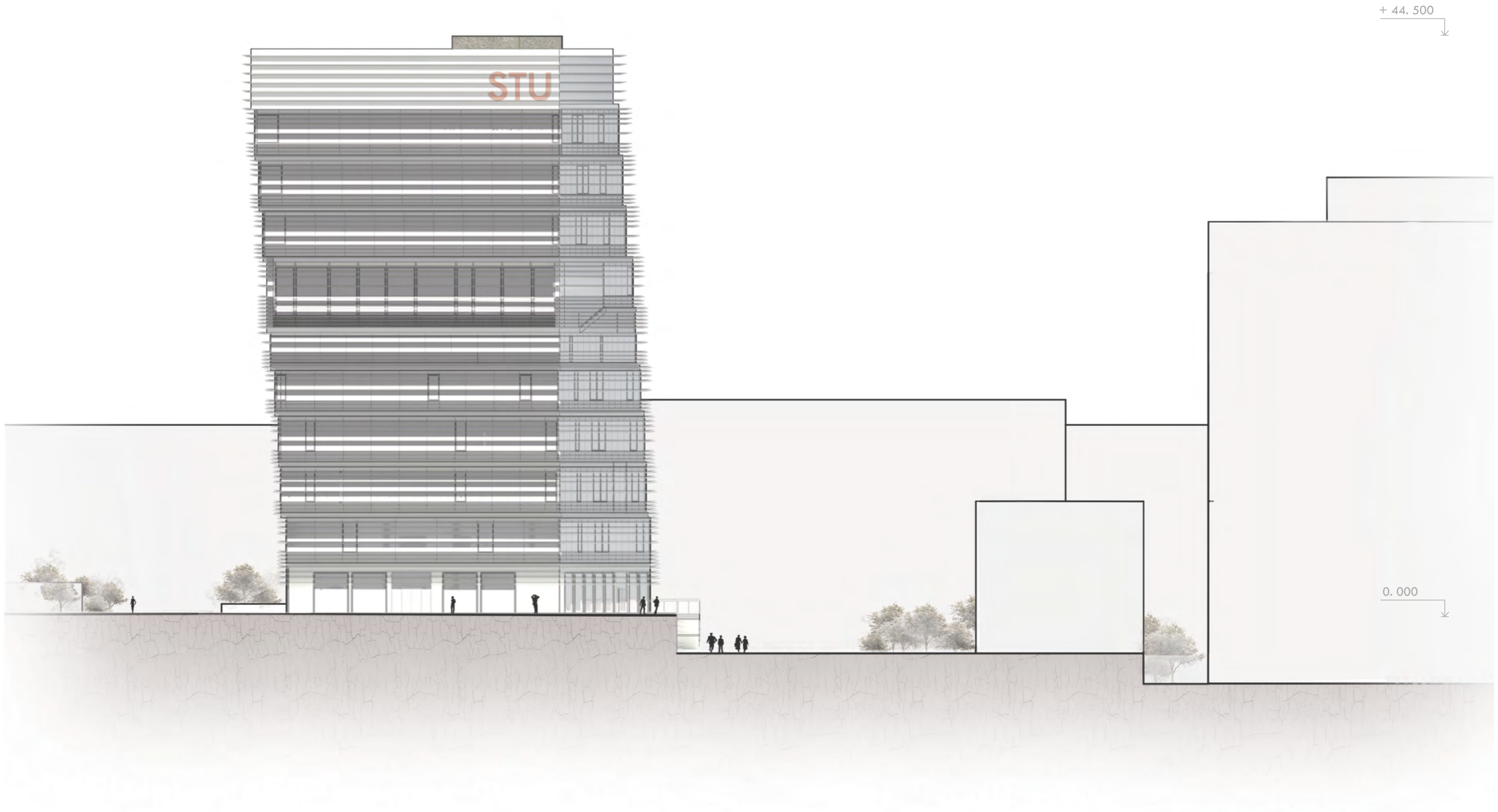




Left view



Right view

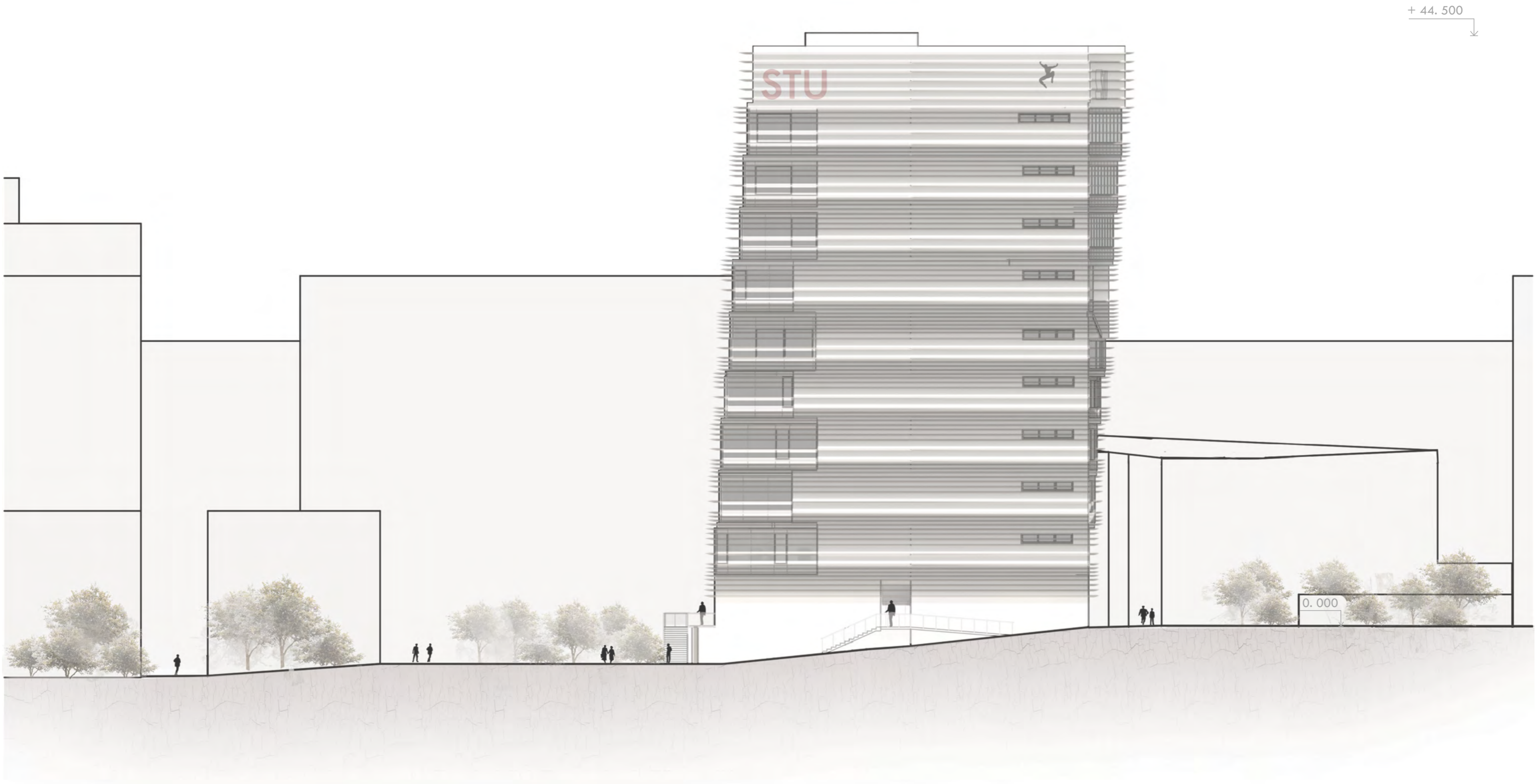


STU

+ 44.500

0.000

Front view



Rear view





