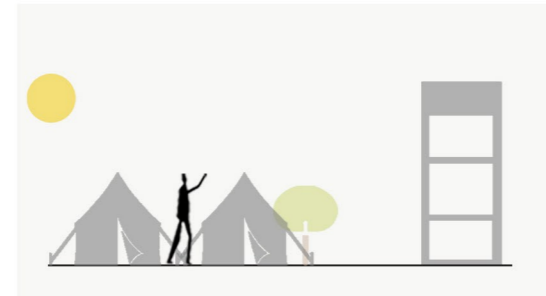
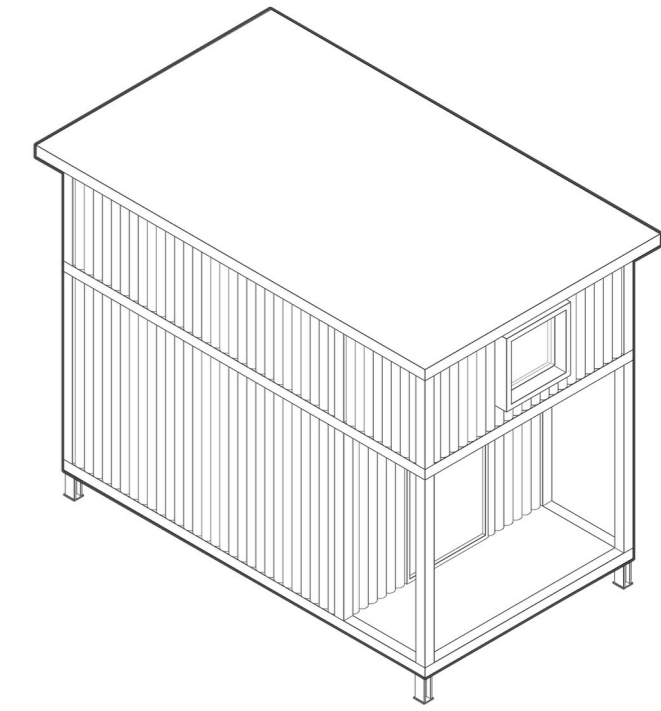
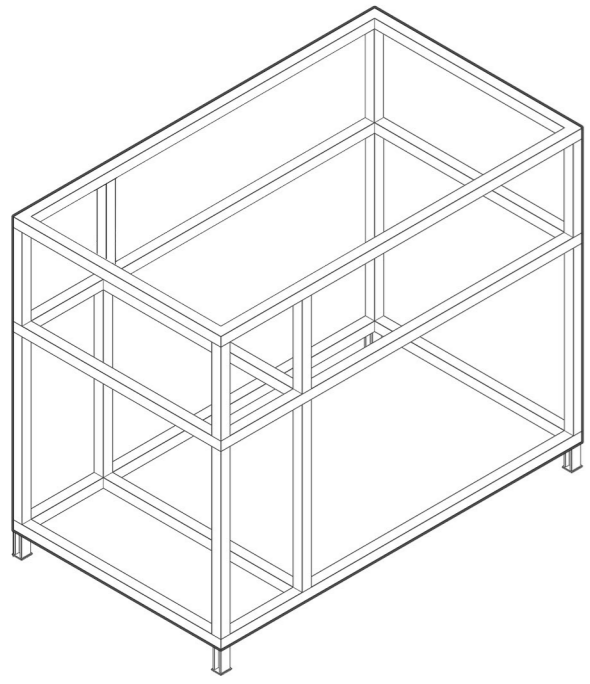


The Transient Construction Labour Community

*In this ruthless world, I became migrant labour with broken confidence
Walking aimlessly for little alms of validation, No tears left to cry, dreams defiled to granules
His aphonic eyes are now used to this pain, Wandering through the heated streets
With no hopes of insight, The leaking roof above his bed
Where he always dwelled, But everything morning he wakes up
Ready to go for the grind, With sun rays gleaming on his face
He hopes that someday it will be better, Maybe.*



Every morning they wake ready to go for their daily grind.



After a hectic work, they take a break for their lunch.

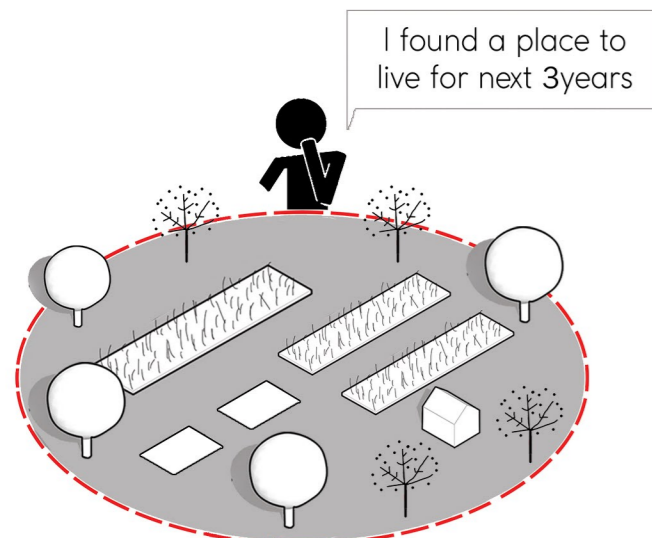


They gather in their community after their daily work is done by dusk.



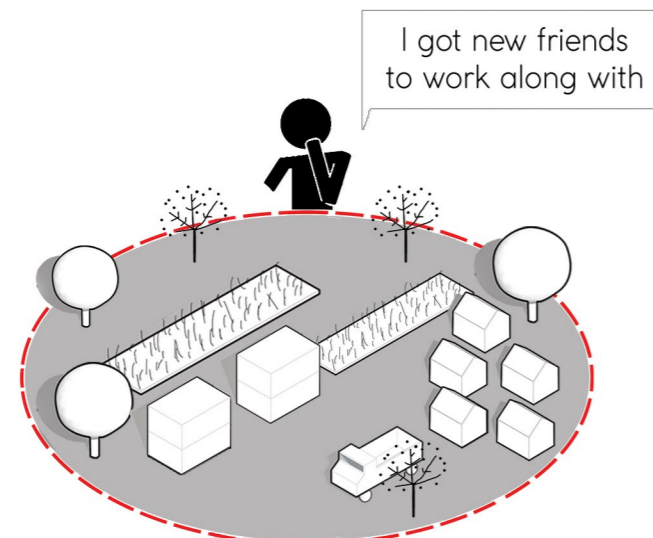
After a heavy mechanized day, they sleep wondering about the next day.

INTRODUCTION | Where does the future lead us to ?



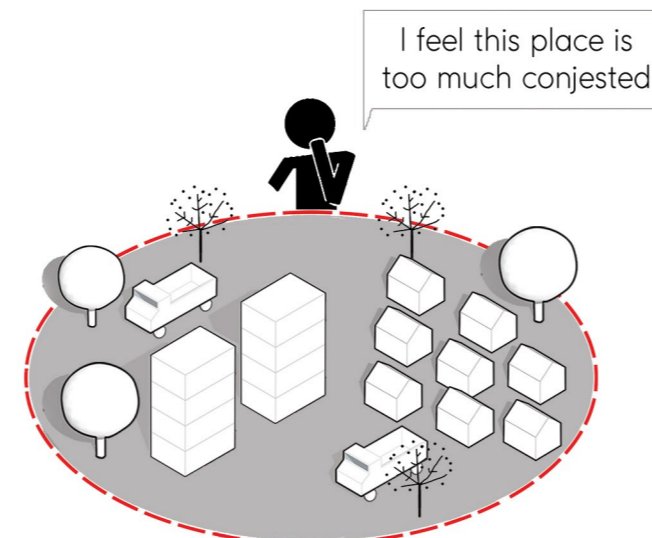
BEGINNING

Construction site is determined. A site to build the **worker community is allocated** in a near by location to the project. Initially **few construction workers are moved in** with the amenities to start the construction works.



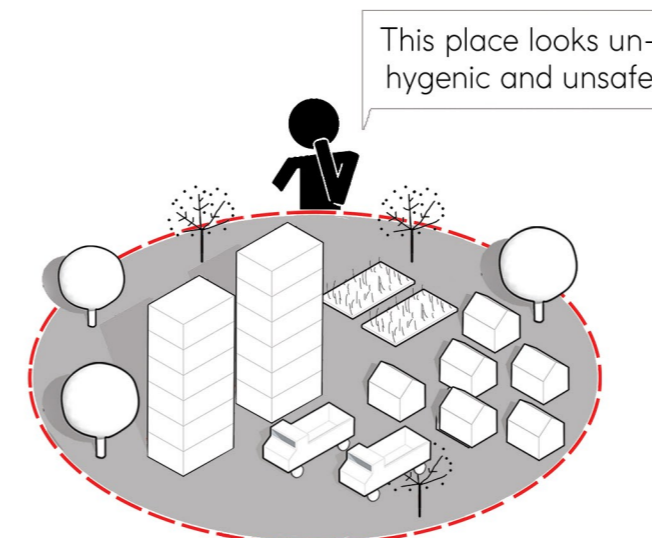
0.5 YEAR LATER

Construction moves forward. **More workers come in**, and the worker community grows with the addition tents. As it expands, **generators provide electricity**, trucks bring in clean water, and take away sewage waste.



1.5 YEAR LATER

Construction nears completion and the **worker community reaches full capacity**. Tents and amenities have created a **city like community near the construction project site** and the construction moves much faster.



2 YEAR LATER

Construction is almost complete, and **less labour work is necessary**. Due to **high land value** and planned projects, the worker community which housed the construction workers begins to get disassembled.



2.5 YEAR LATER

Construction area begins to get **cleaned up**. Generators are removed while trucks continue to bring in at a less frequent rate. The **community shrinks to much smaller sizes** while the site is almost completely cleaned up.

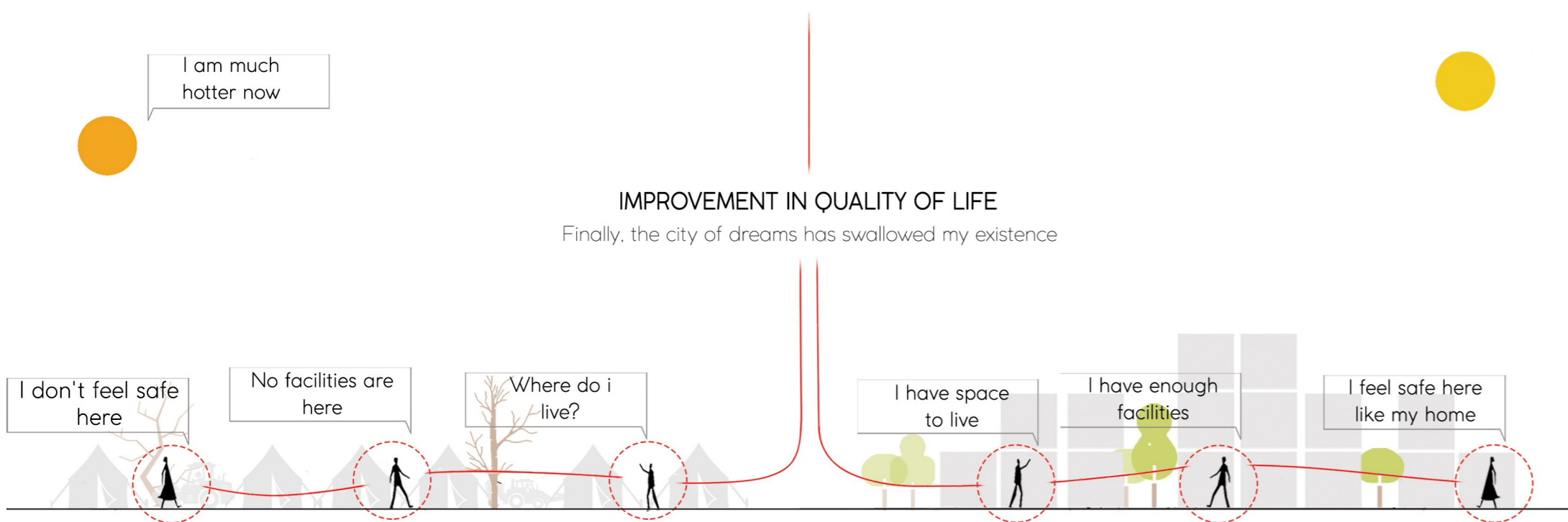


3 YEAR LATER

Project is **fully completed**, construction site is cleaned, worker community is **disassembled and eventually they will be shifted are relocated to a different location**. As this goes on like a cycle in each construction site.

CONCERNS | Home is not a place, its a feeling

Home is not a place its a feeling



CAMPS/TENTS

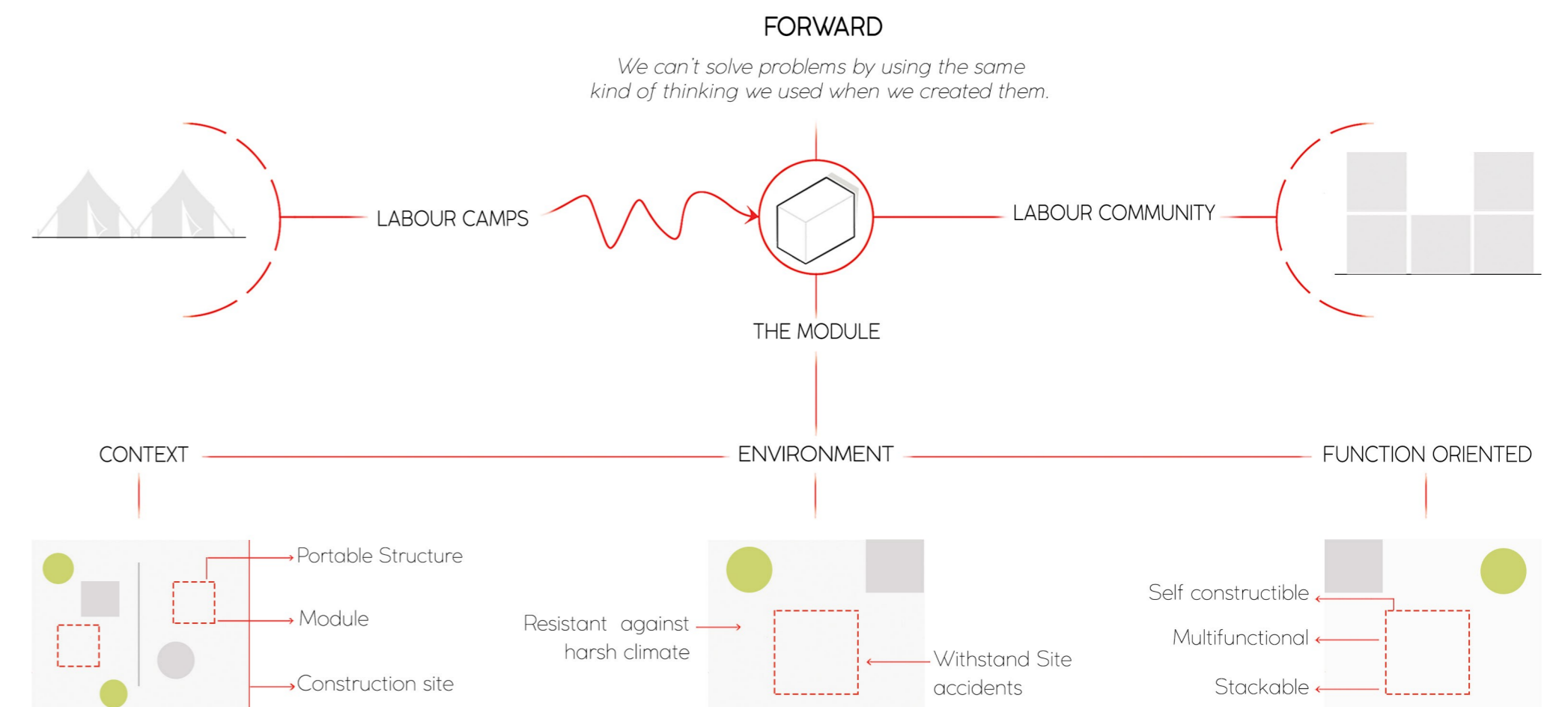
Camps \ Tents are restrained with forced conditions. And their living conditions of most of these labourers in camp is not good. They are not well planned and they lack most of the basic amenities for the people who live in the community. so it is not created with the dwellers in mind.

COMMUNITY

Communities are people. They are not abstractions. They are not rhetoric. They are human beings. Communities are well planned with all the basic facilities which is needed for the people who live in the community. As we need to create spaces with the dwellers in mind.

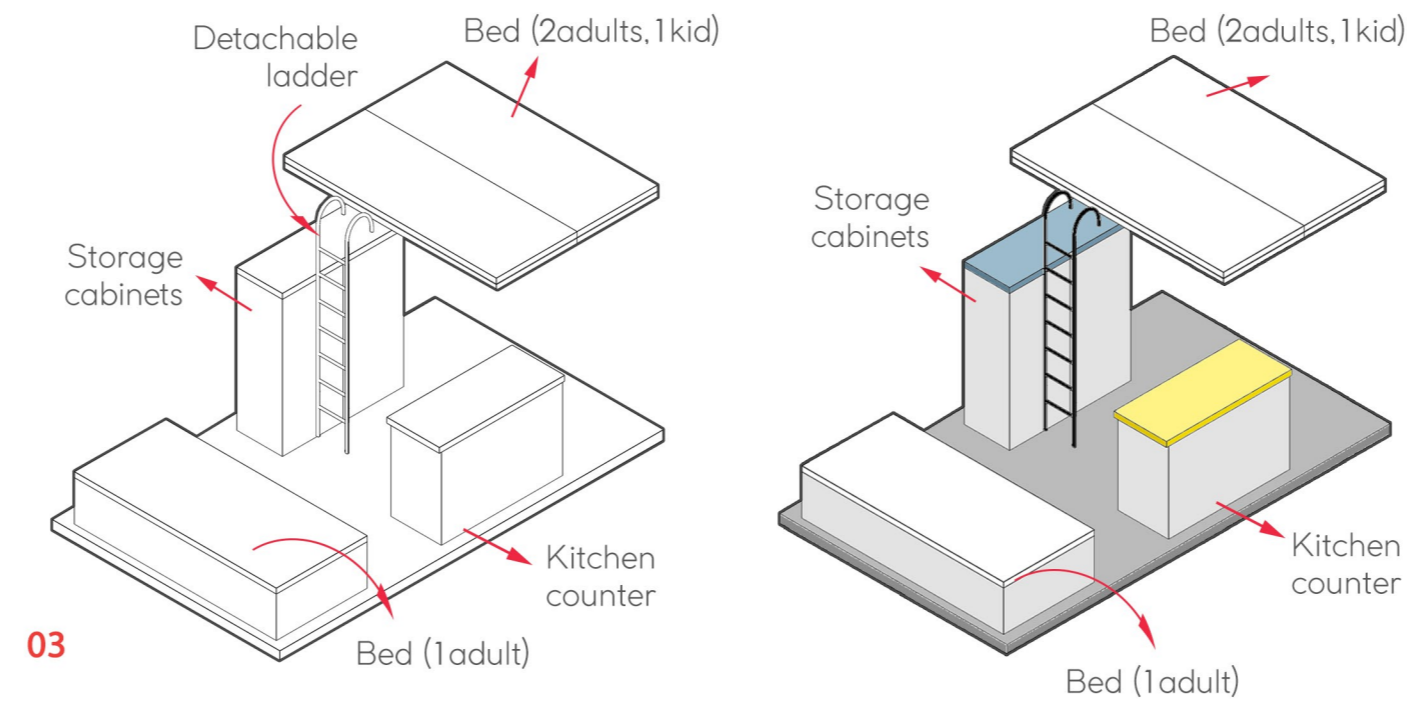
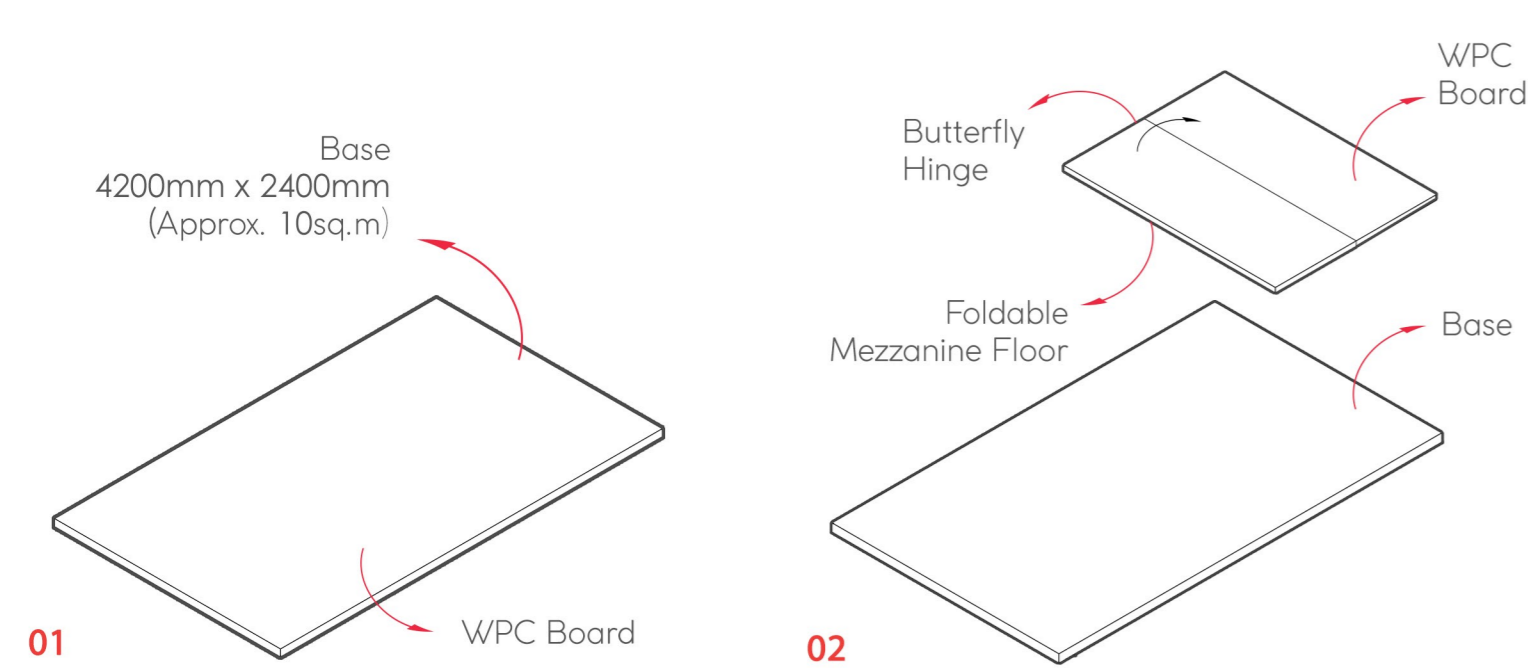
DESIGN IDEATION | create successful housing for construction workers

The goal will be to generate a worker community which will provide necessary amenities and act as a temporary city - immediately next to the construction site.

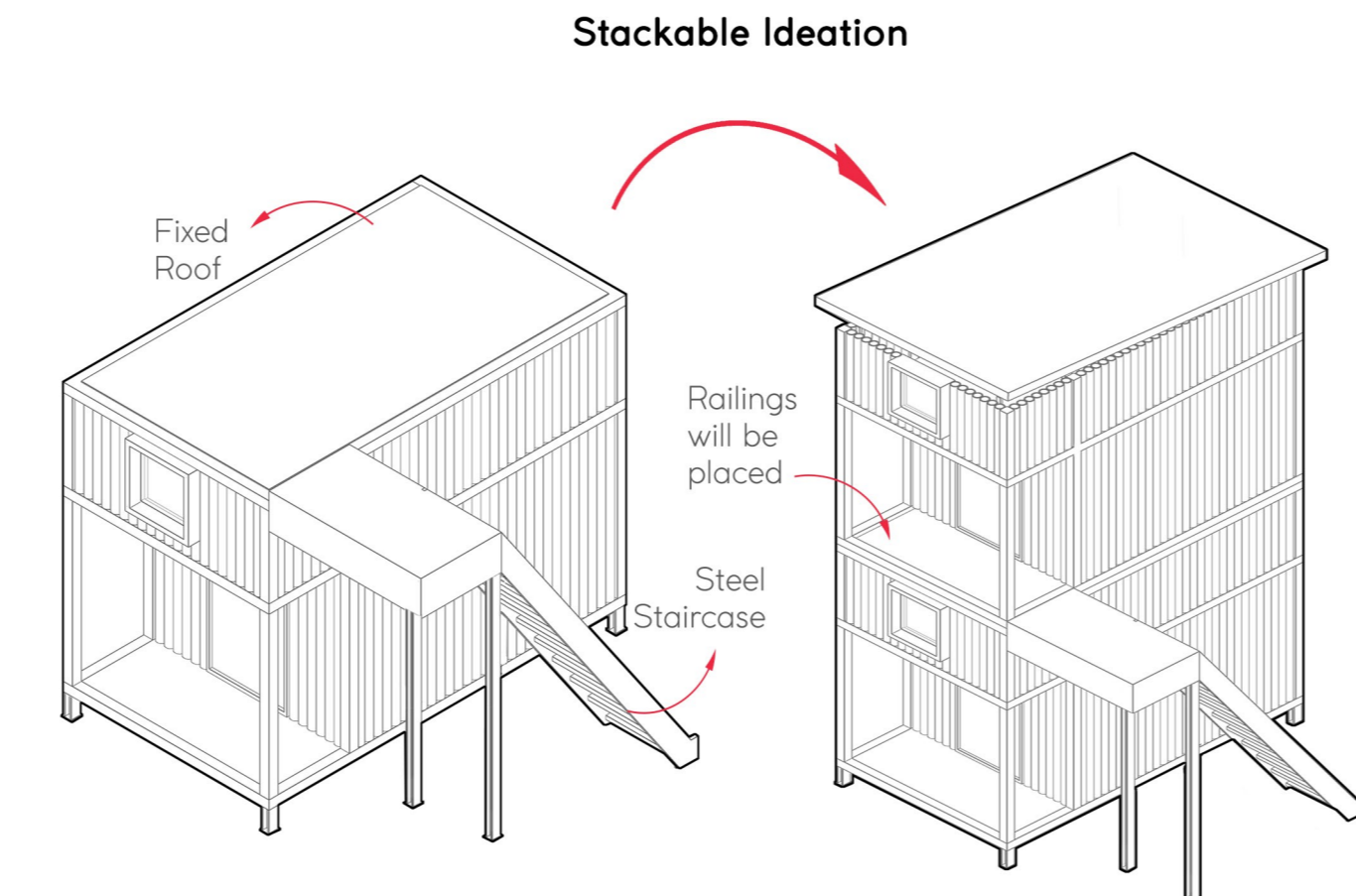
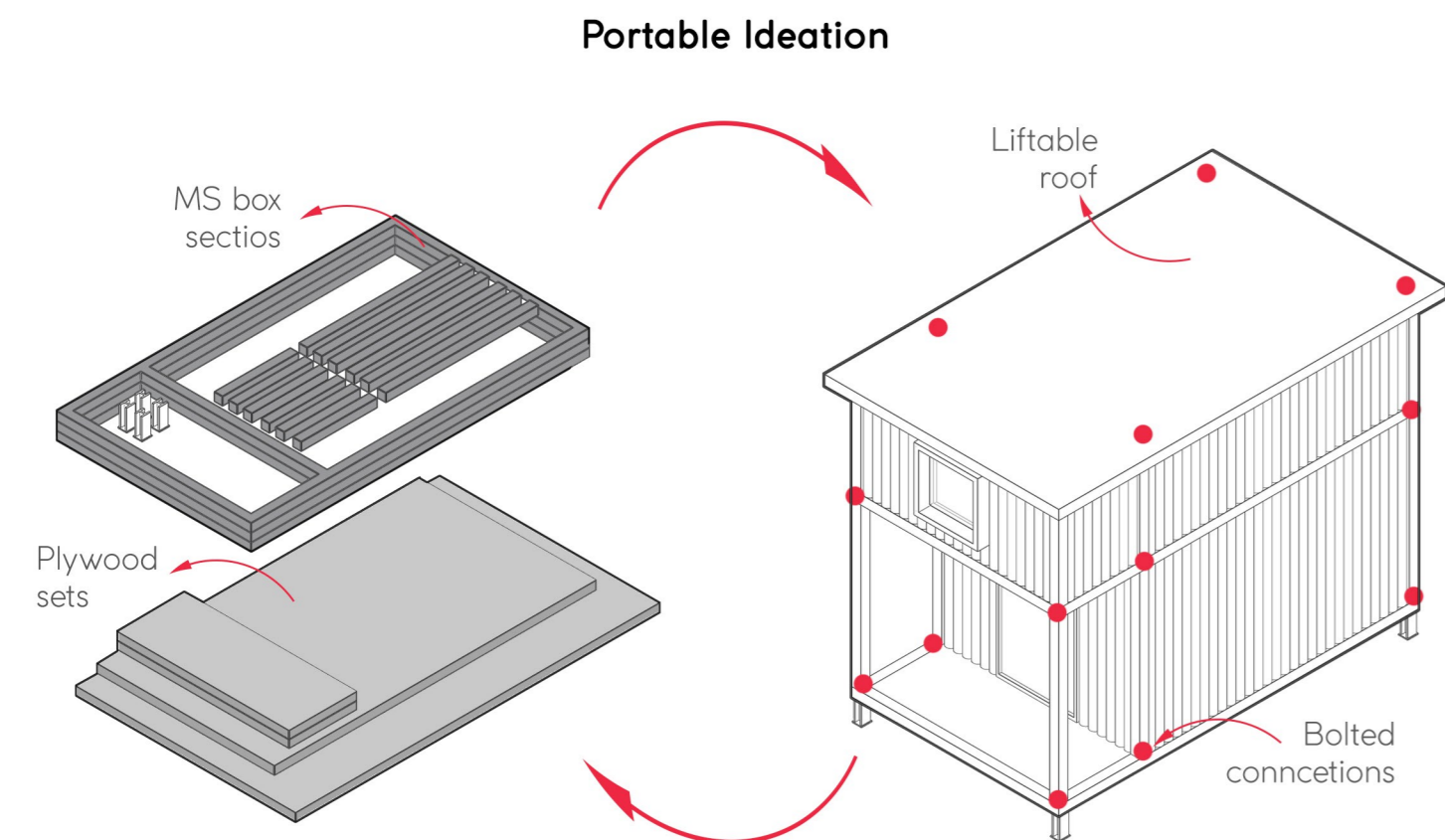
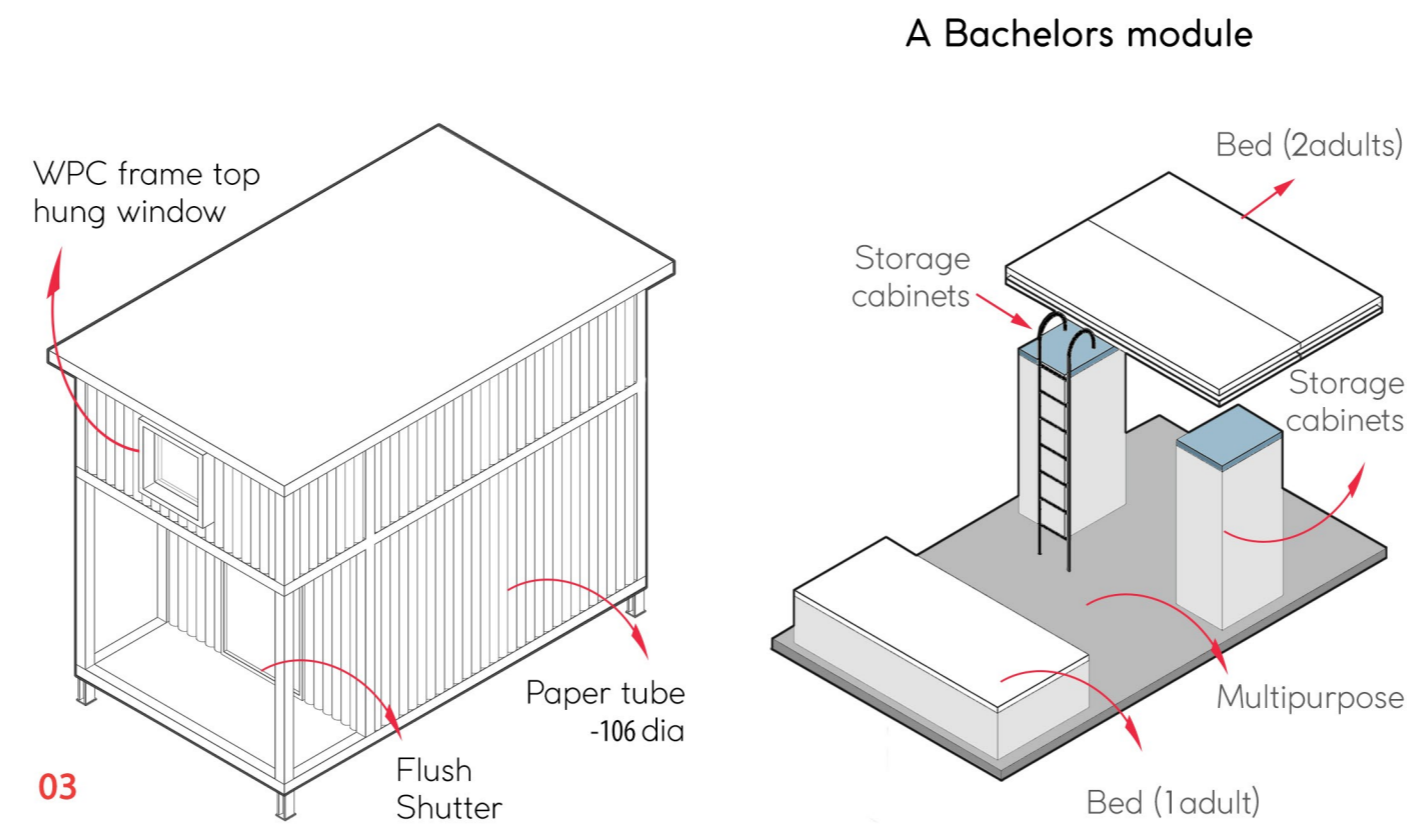
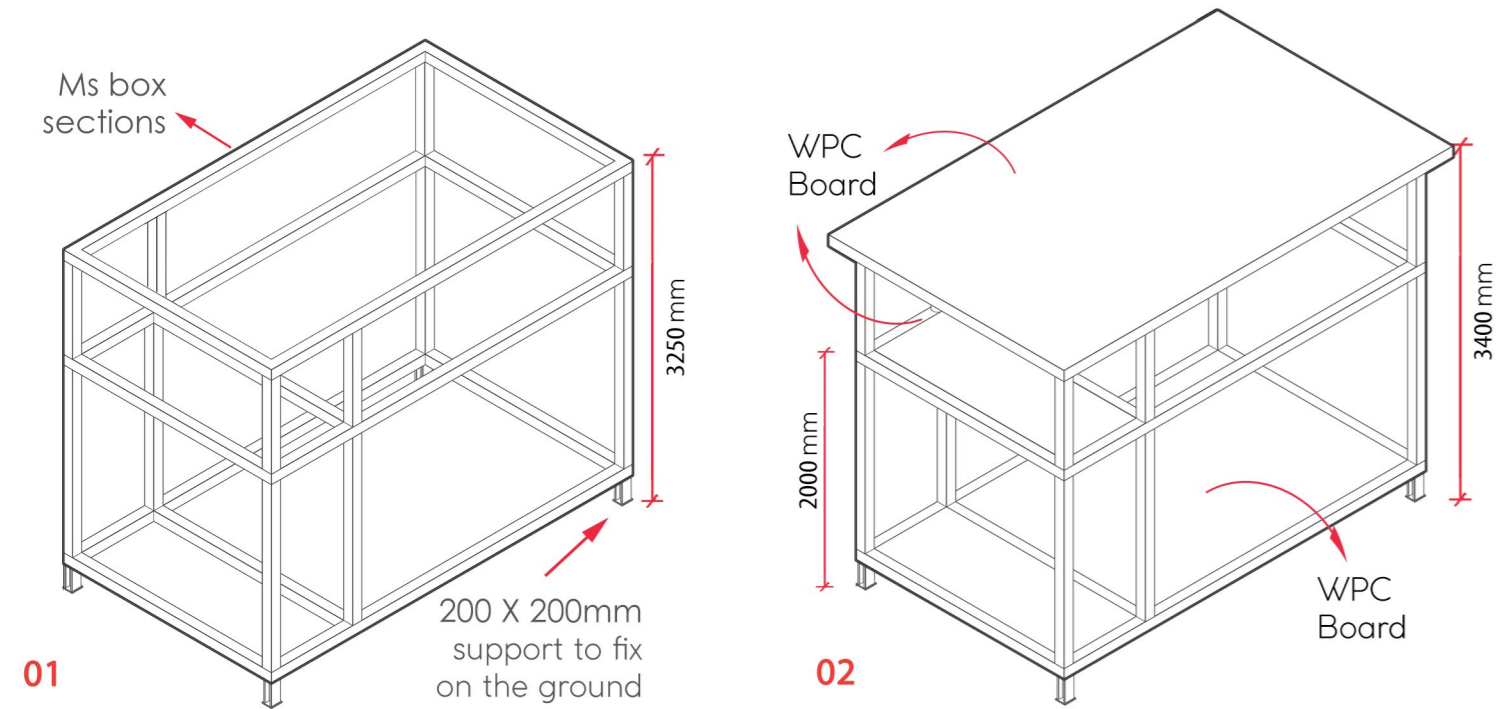


DESIGN EVOLUTION | What factor does the module corresponds to ?

SPATIAL EVOLUTION | Designed to have a adequate sleeping space



STRUCTURAL EVOLUTION | Designed to be strong, stackable and portable



The module is detached into individual pieces and are taken to different construction site. paper tubes are replaceable when damaged.

Bolted joints are used so that it easy to detach and attach the module and also it doesnt require skilled labours.

When the module is stacked the roof of the module below is fixed which helps the module to be rigid.

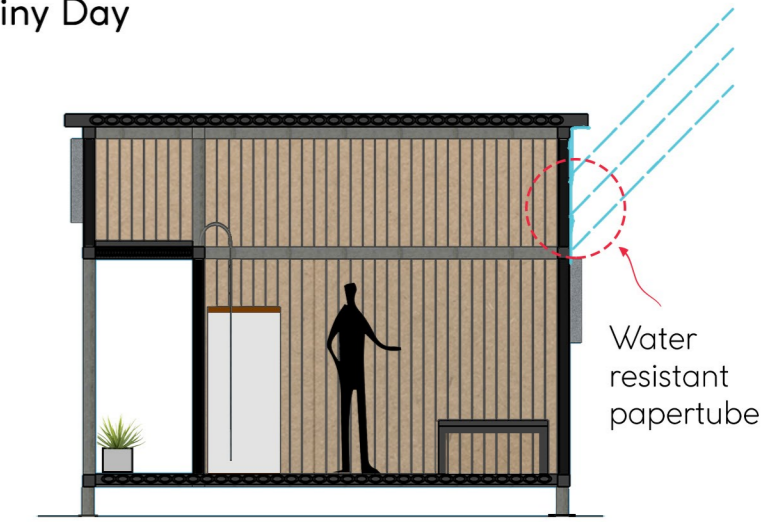
Steel staircase is used for providing vertical circulation if incase the module is stacked above one another. It can go upto G+2

CLIMATIC RESPONSE |

How does the module responds to climate ?

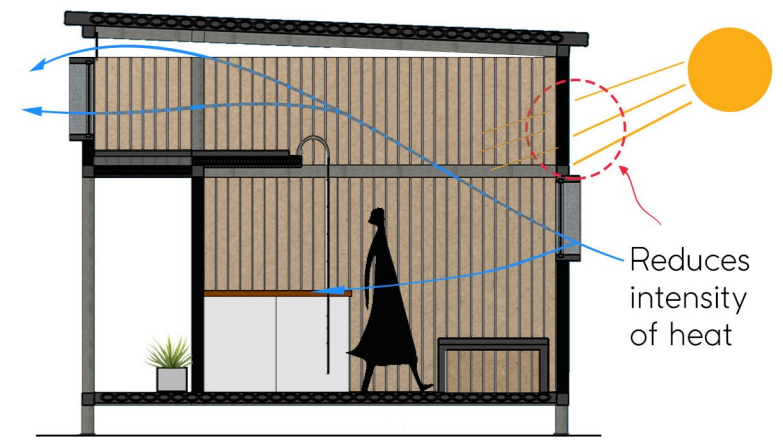
On a Rainy Day

In the case of cold regions, the paper tubes are filled with shredded papers and these paper tubes are normally treated with chemicals and coated with wax to avoid absorbing the water and the moisture content from the surrounding. So this material is termed to be water-resistant and can be used in harsh weather conditions too. So they are considered to be an efficient material.

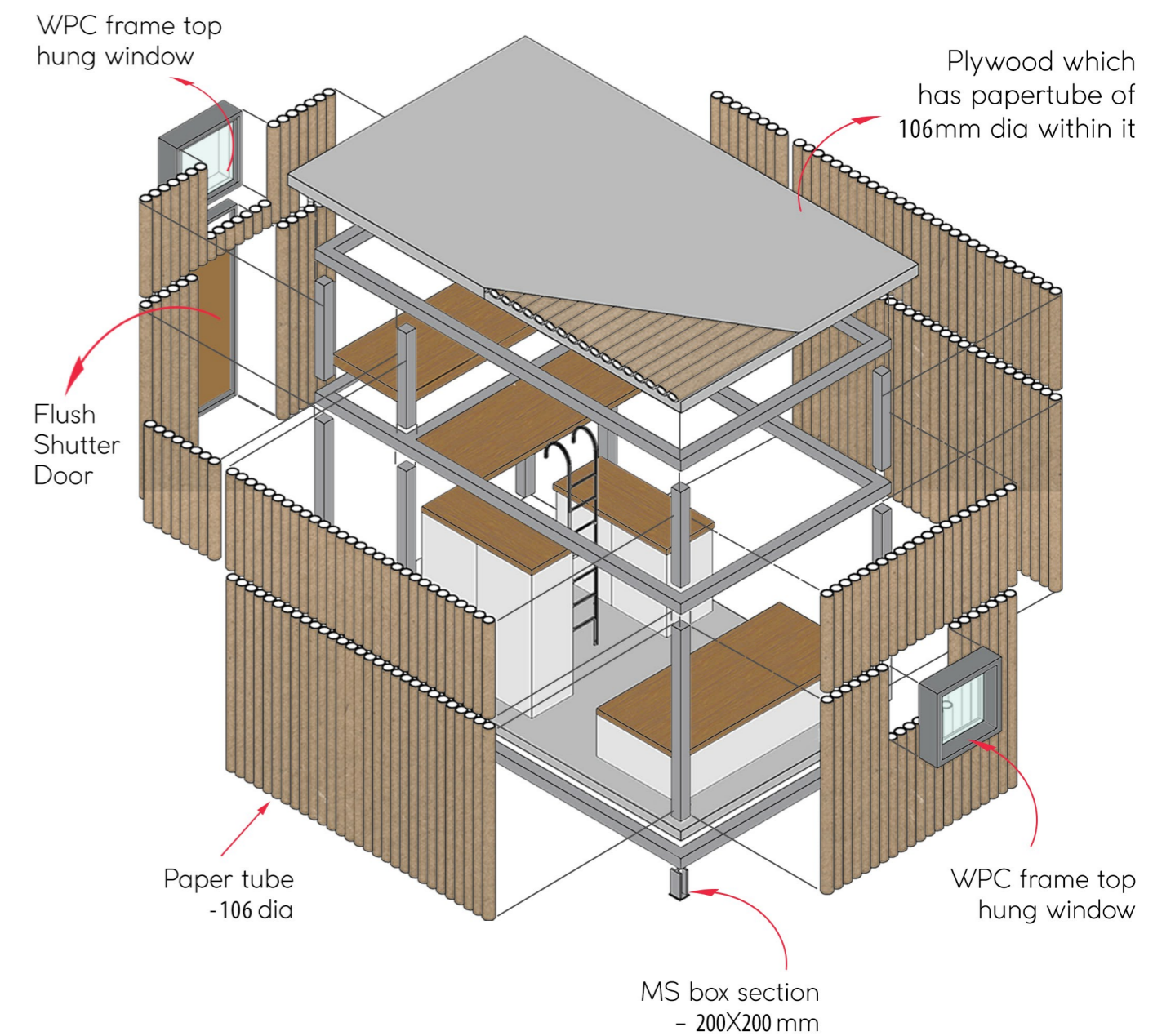


On a Sunny Day

In the case of hot regions, the paper tubes are found to be much more efficient in moderating the climate within the structure by reducing the amount of heat gained by the structure and also the structure is designed to appreciate the stack effect with the help of window arrangements and the movable roof. So it reduces the intensity of the sunlight passing through the tube.

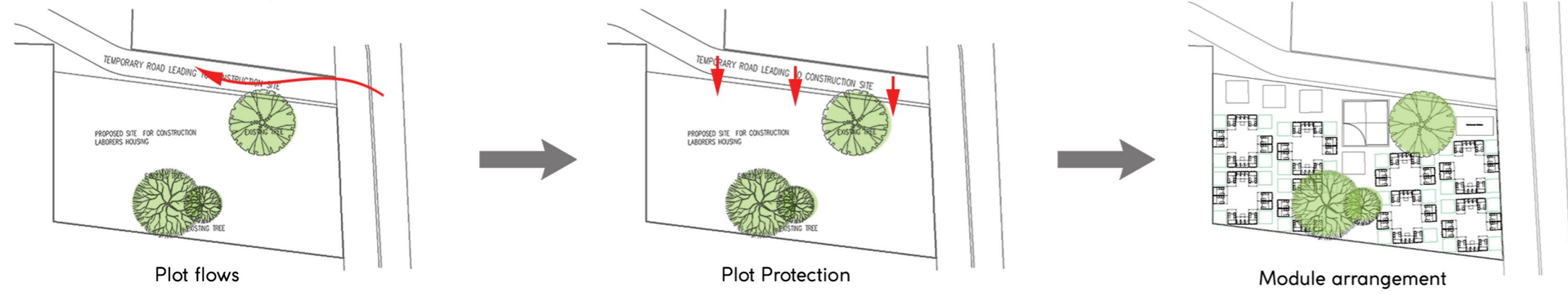


Exploded View



The above view clearly represent the different strata that constitutes the portable module. This unit compromises on enough sleeping space and multiusage spaces, initiating man into developing his/her own habits and activities by making them feel it like a home.

SITE DEPLOYMENT | Site-1 In Hinjewadi, Pune



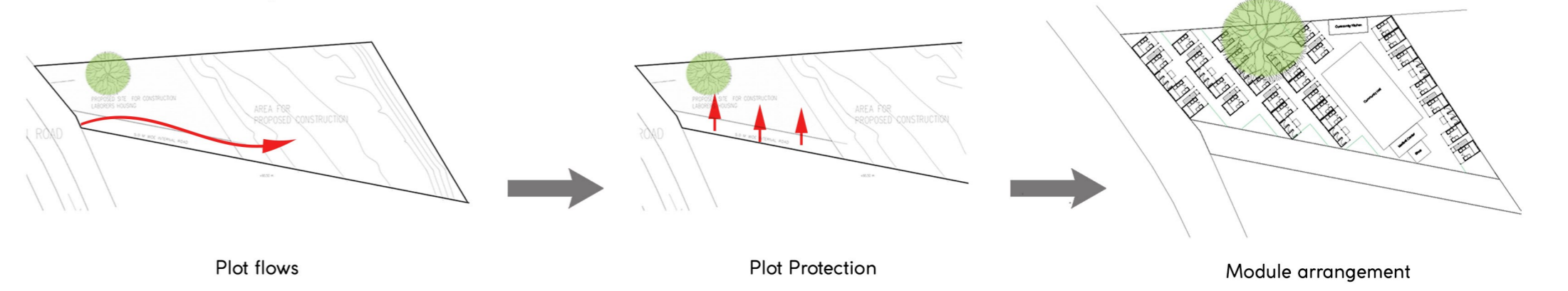
Plot flows
Plot flows from a busy road on the north side, and the movement from site to labour camp is from west.

Plot Protection
The modules are kept away from the road side so they are not disturbed when heavy vehicles pass by the road.

Module arrangement
The family and bachelor modules are arranged separately and community center in the heart.



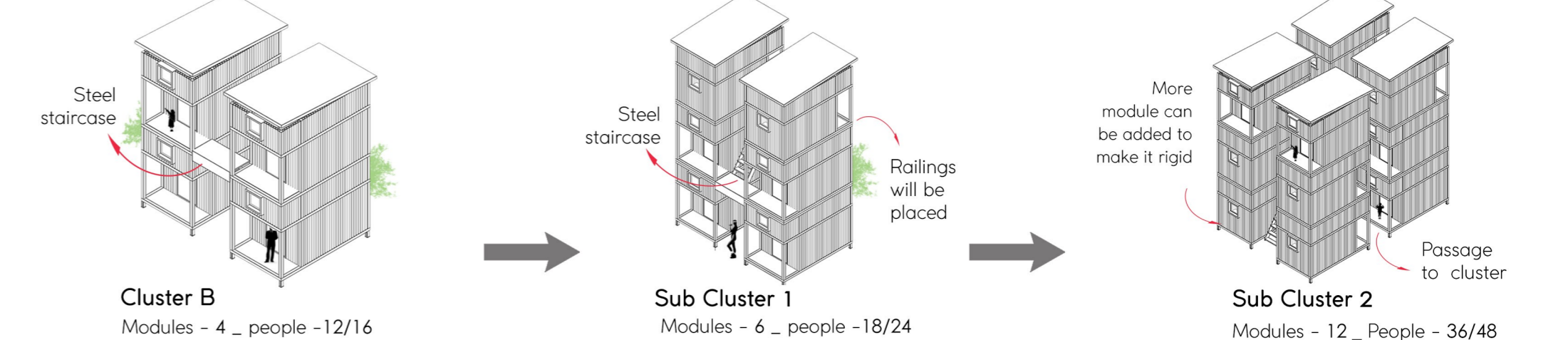
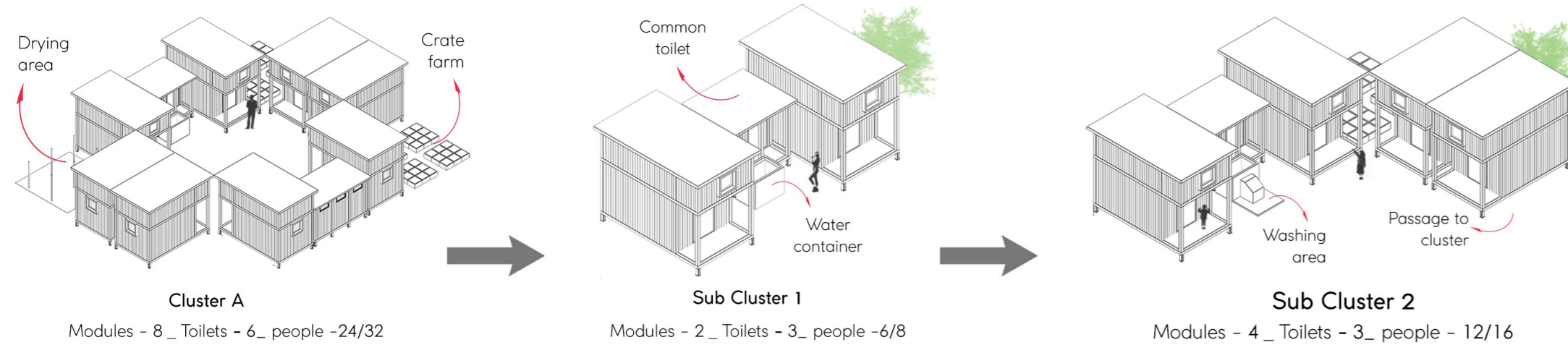
SITE DEPLOYMENT | Site-2 In Ernakulum, Kerala



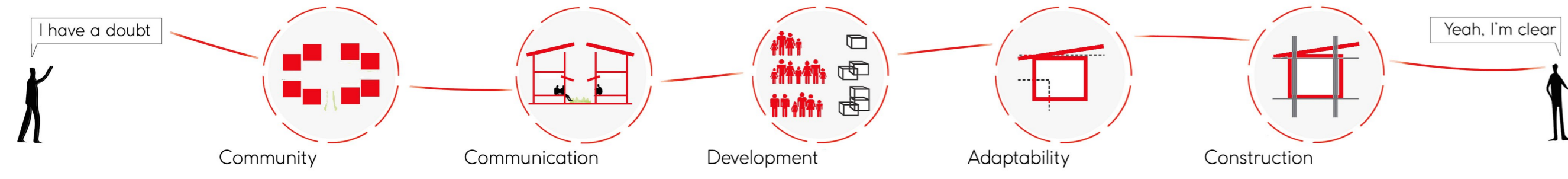
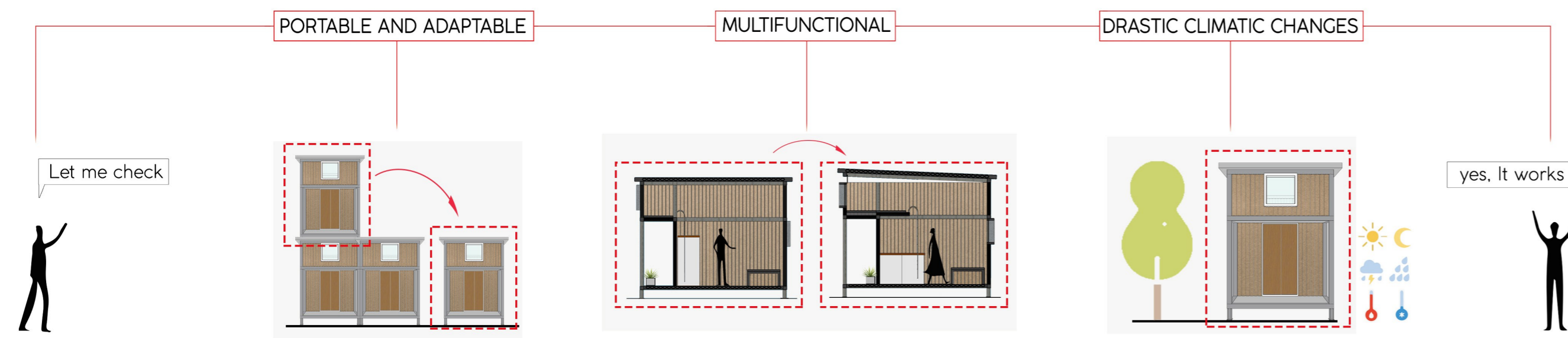
Plot flows
Plot flows from a busy road on the north side, and the movement from site to labour camp is from west.

Plot Protection
The modules are kept away from the road side so they are not disturbed when heavy vehicles pass by the road.

Module arrangement
The family and bachelor modules are arranged separately and community center as barrier.



DESIGN JUSTIFICATION | Does the module really validates to the circumstances ?



PAPER TUBE |

The idea behind this material is to use the tubes once the paper roll is finished since It's inexpensive, made out of recycled paper and termed to be much stronger than expected



Paper Tube

MS SECTIONS |

This material is long-lasting and user friendly can be easily installed doesn't need skilled labour. Can be installed with a minimum amount of people. And also sustainable.



Ms Section

WPC BOARD |

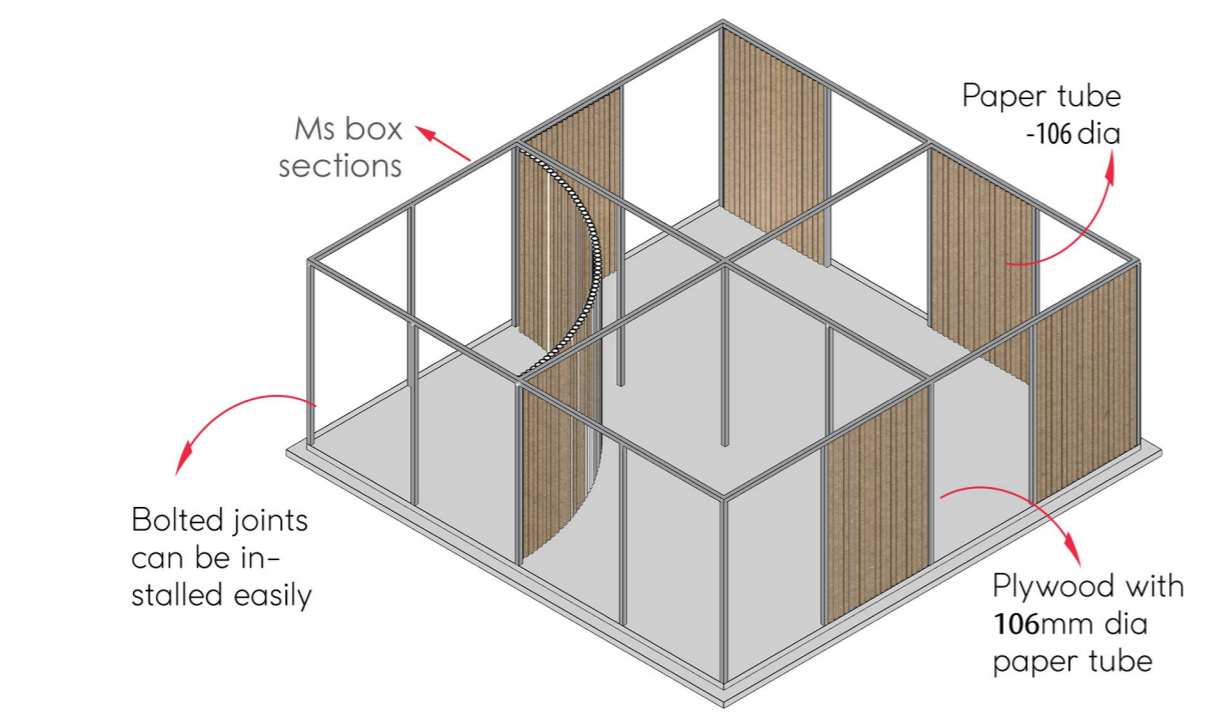
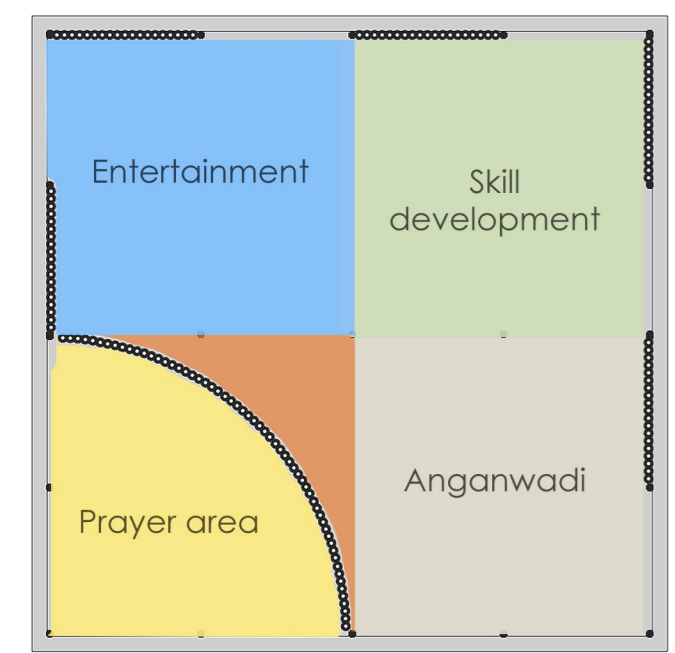
This material is used in flooring and roofs it is long lasting and user friendly can be easily installed doesn't need a skilled labour, can be installed with minimum amount of people.



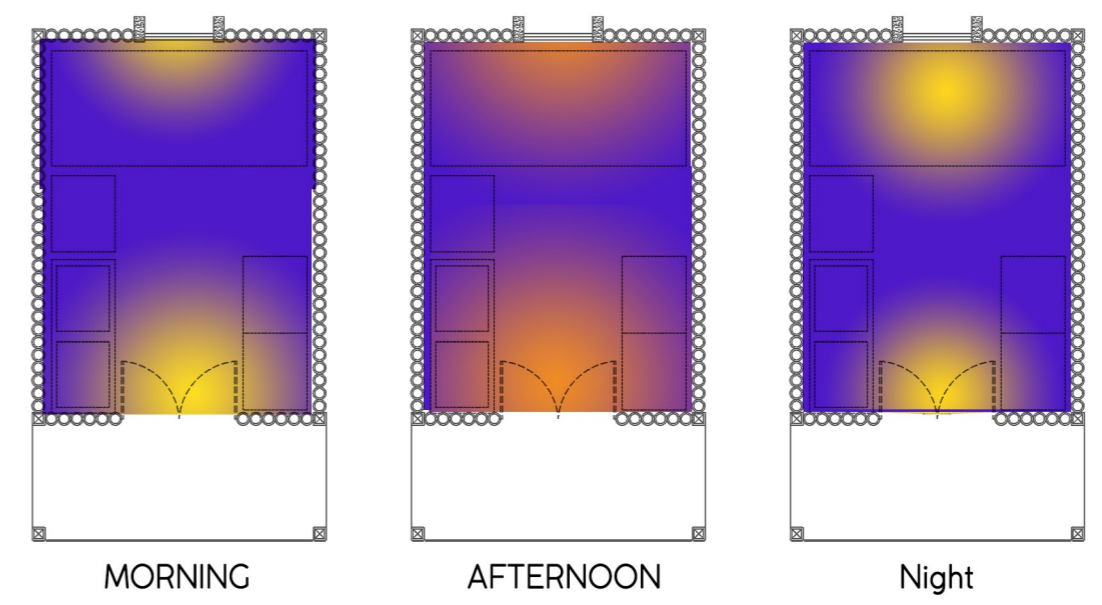
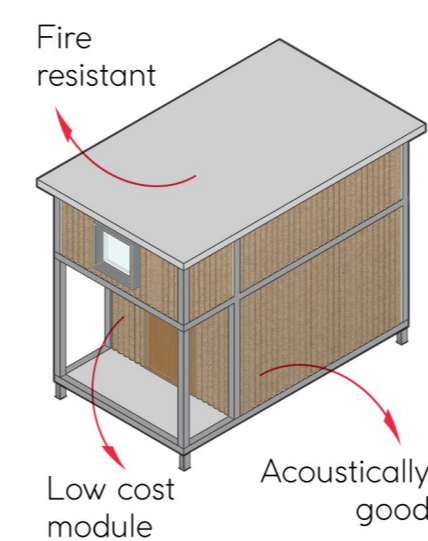
WPC Board

MS SECTION	PAPER TUBE	WPC BOARD
SUSTAINABLE	ECO-FRIENDLY	ECO-FRIENDLY
LESS WEIGHT	HIGH DURABILITY	WEATHER PROOF
LESS MAINTANANCE	AESTHETIC	EASY MAINTANANCE
COST EFFECTIVE	LESS WEIGHT	AESTHETIC
INSTALLATION FRIENDLY	COST EFFECTIVE	INSTALLATION FRIENDLY

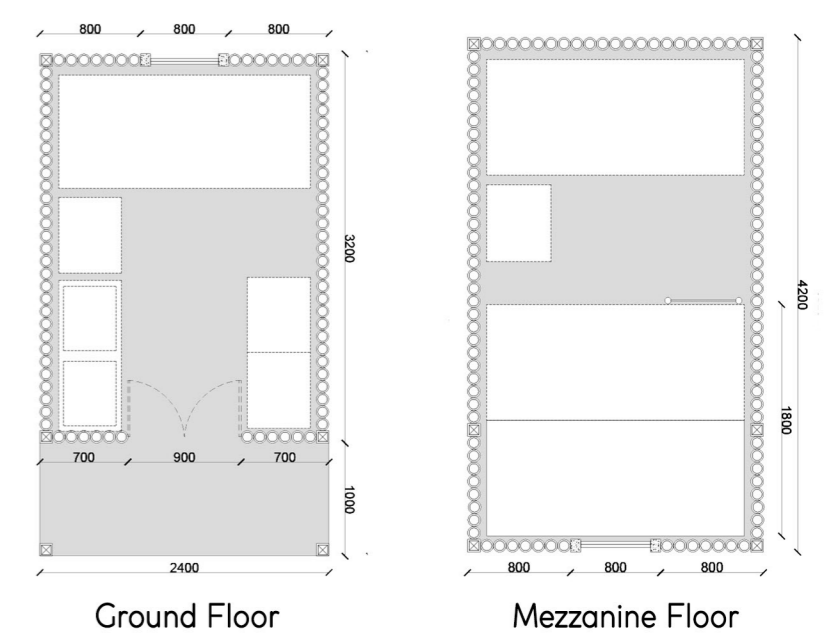
COMMUNITY CENTER | Planning and space usage



MODULE FACTORS | Features of the unit module



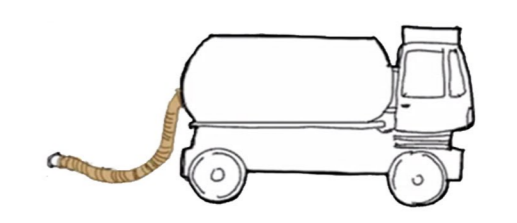
MODULE | Floor Plans



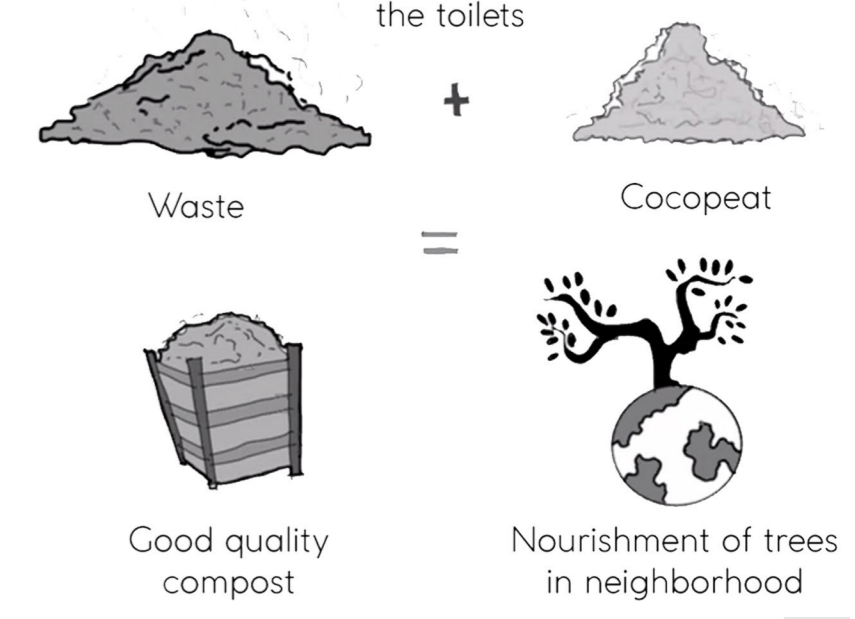
A multipurpose activity centre of 1500 sq. ft is given to adapt itself into a crèche or a playschool during the day, workshop or a training centre for the younger age group to develop skills to become a plumber, electrician, fabricator, carpenter or mason, a place for social gatherings or TV watching/entertainment hub.

The paper tube helps in maintaining the temperature inside the module, However harsh the climate is, it always reduces the intensity of the harsh climate and makes the people inside feel comfortable in both hot and cold regions.

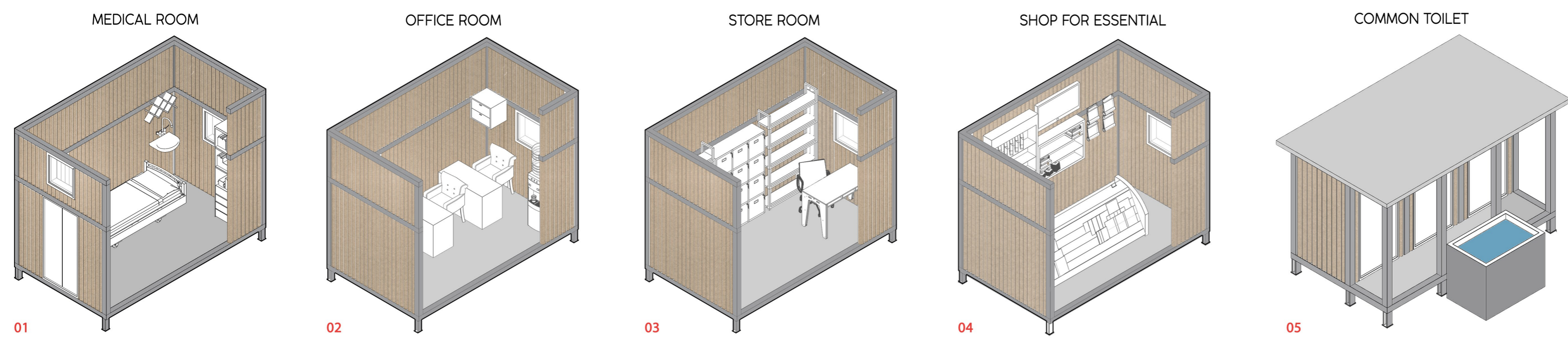
WASTE DISPOSAL |



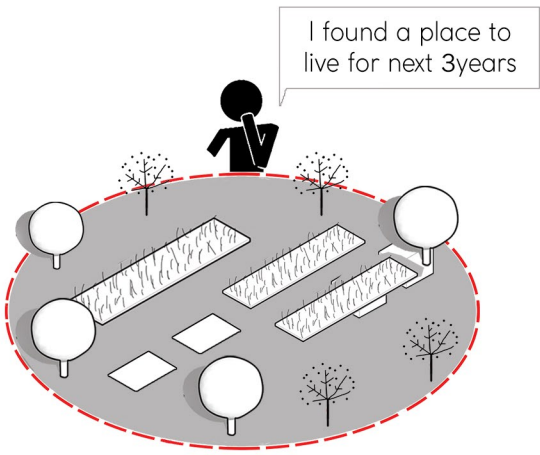
Waste removed from the toilets



MULTIFUNCTIONAL MODULE | Can be modified ?



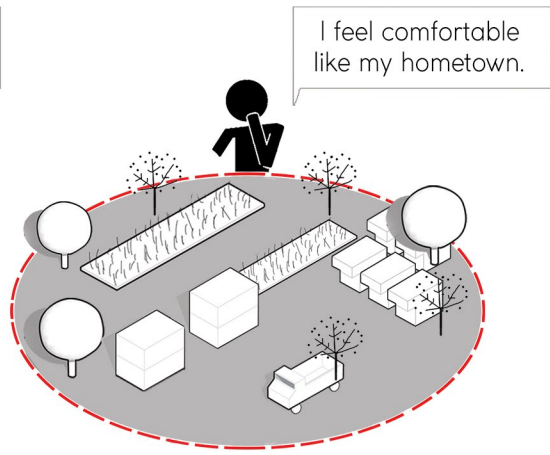
CONCLUSION | Indemnify



I found a place to live for next 3years

BEGINNING

The project is initiated as the construction site determined and worker community sites are allocated. The modules are ordered as per the requirement of the contractor based on count of labourers.



I feel comfortable like my hometown.

1 YEAR LATER

Construction moves along as the worker community grows, and infrastructure is constantly expanded. More modules are brought in to accommodate the growing population.



I can get all my basic amenities in here still.

2 YEAR LATER

The project is near completion, the labour community is at maximum capacity and infrastructure is laid out along the entire site. While trucks continue to bring in clean water and take away sewage.



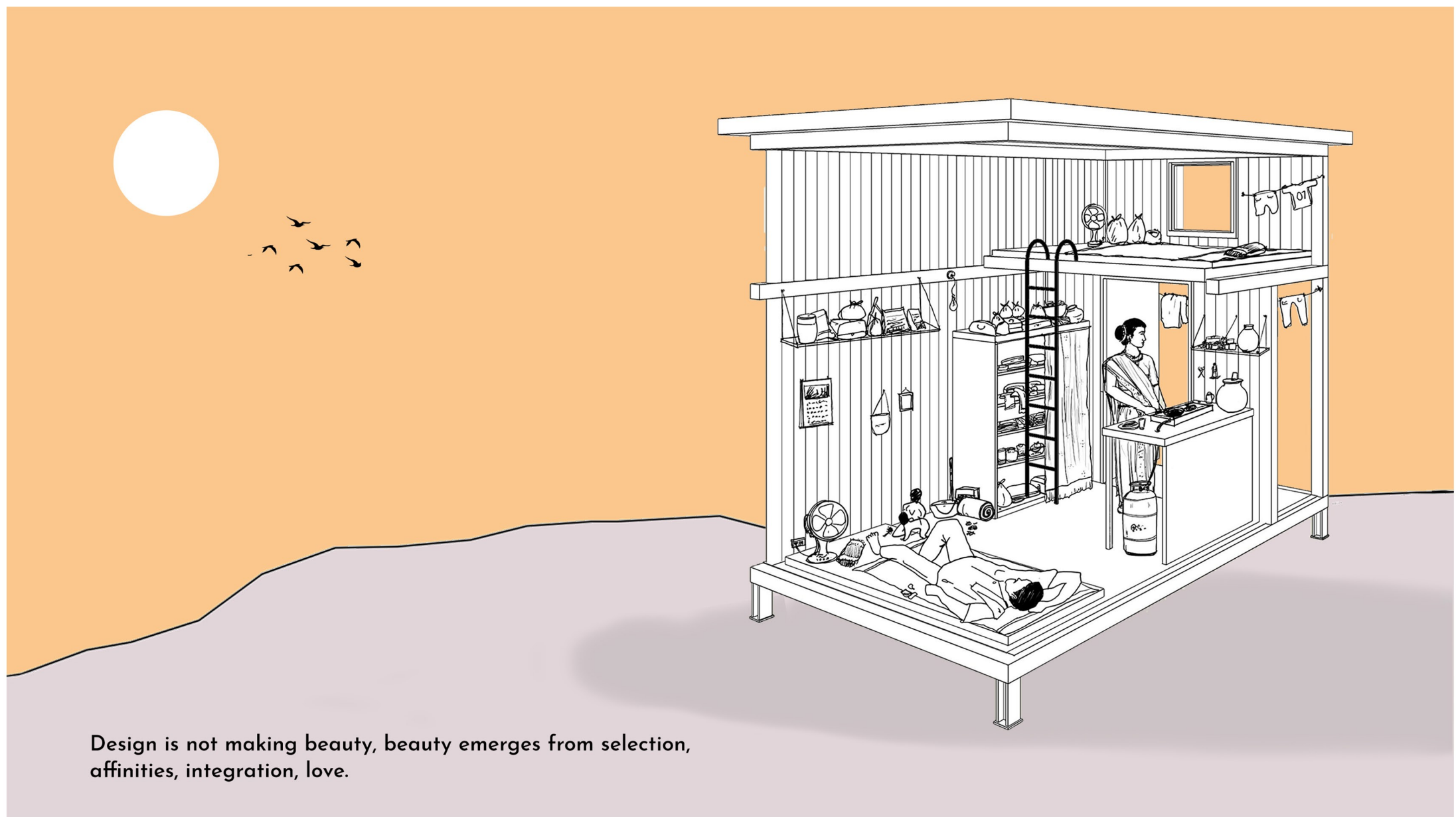
I feel happy to shift this along with me

3 YEAR LATER

Modular houses are disassembled to potentially be reassembled and reused elsewhere. As the Migrant labours can take their home along with them wherever they migrate.



One of the great beauties of architecture is that each time, it is like life starting all over again.



Design is not making beauty, beauty emerges from selection, affinities, integration, love.