

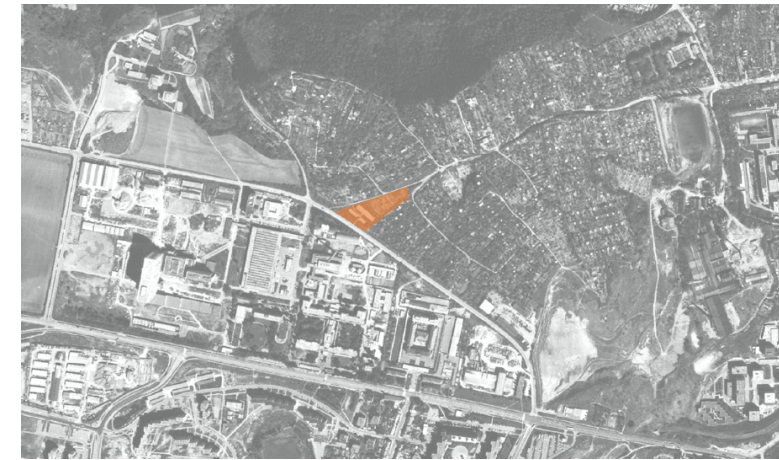
HISTORY ANALYSIS



ortofoto 1935 1:5000



ortofoto 1976 1:5000

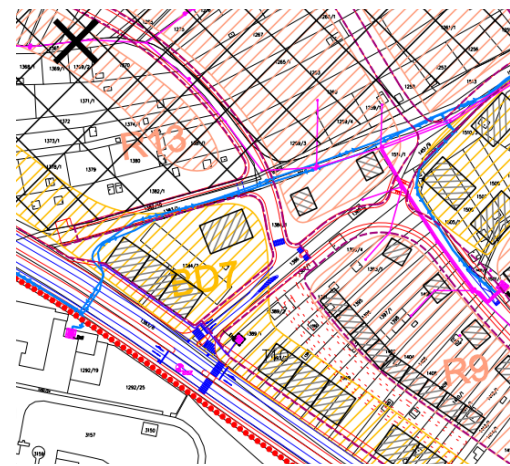


ortofoto 1990 1:5000

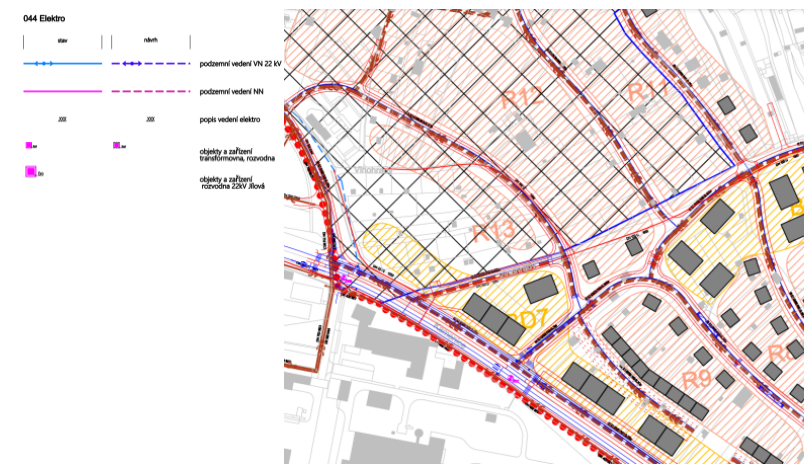


aktuální ortofoto 1:5000

ANALYSIS OF ENGINEERING NETWORKS



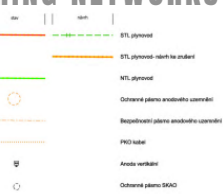
electro



canalization

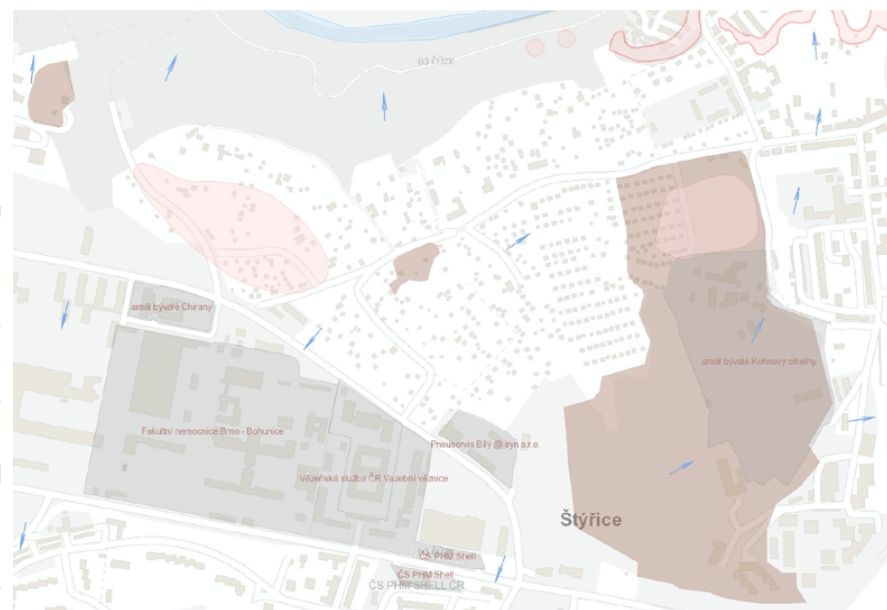


pipeline



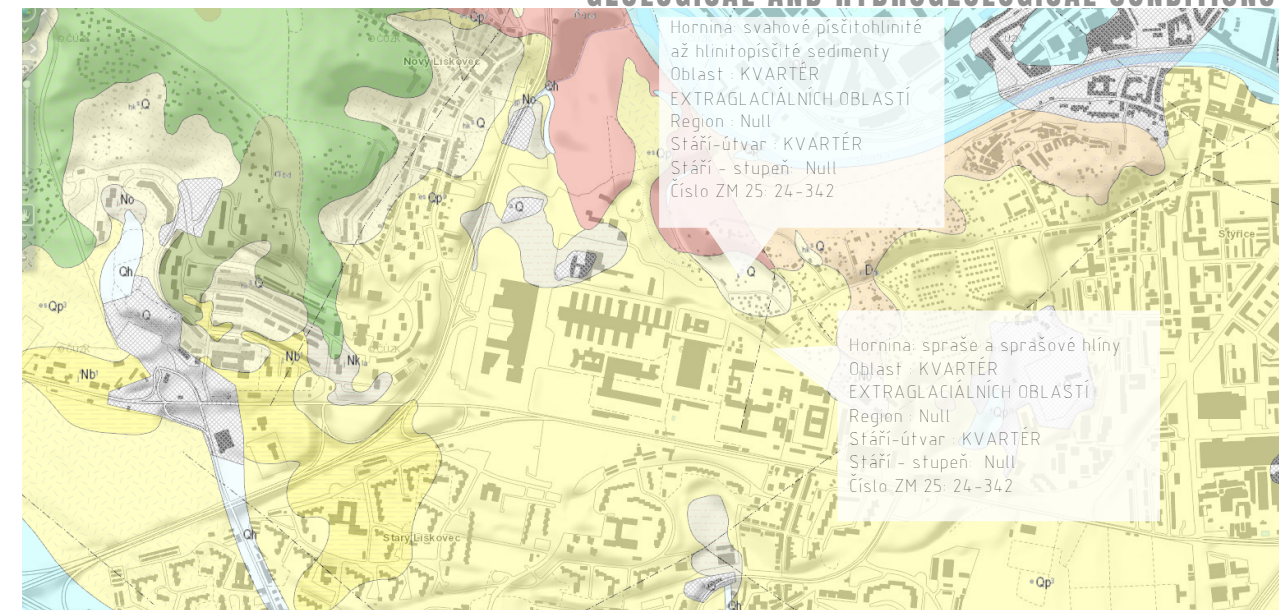
COMPLICATED FOUNDATION CONDITIONS within the documentation for the future construction it is necessary to perform a detailed engineering geological (geotechnical) survey, they can be problematic in terms of foundation conditions

LANDSLIDE AREAS slopes, local occurrence of fossil landslides (soils susceptible to sliding) stabilized by covering with younger sediments, during earthworks, inappropriate loading, change of water regime, or vegetation cover, initiation of slope instabilities, weathering to rock falls



geologická rizika

GEOLOGICAL AND HYDROGEOLOGICAL CONDITIONS



Hornina - svahové písčitohlinité až hlinitopísčité sedimenty
Oblast - KVARTÉR
EXTRAGLACIÁLNÍCH OBLASTÍ
Region - Null
Stáří-útvár - KVARTÉR
Stáří - stupeň - Null
Číslo ZM 25 24-342

Hornina - spraše a sprašové hlíny
Oblast - KVARTÉR
EXTRAGLACIÁLNÍCH OBLASTÍ
Region - Null
Stáří-útvár - KVARTÉR
Stáří - stupeň - Null
Číslo ZM 25 24-342

ANALYSIS