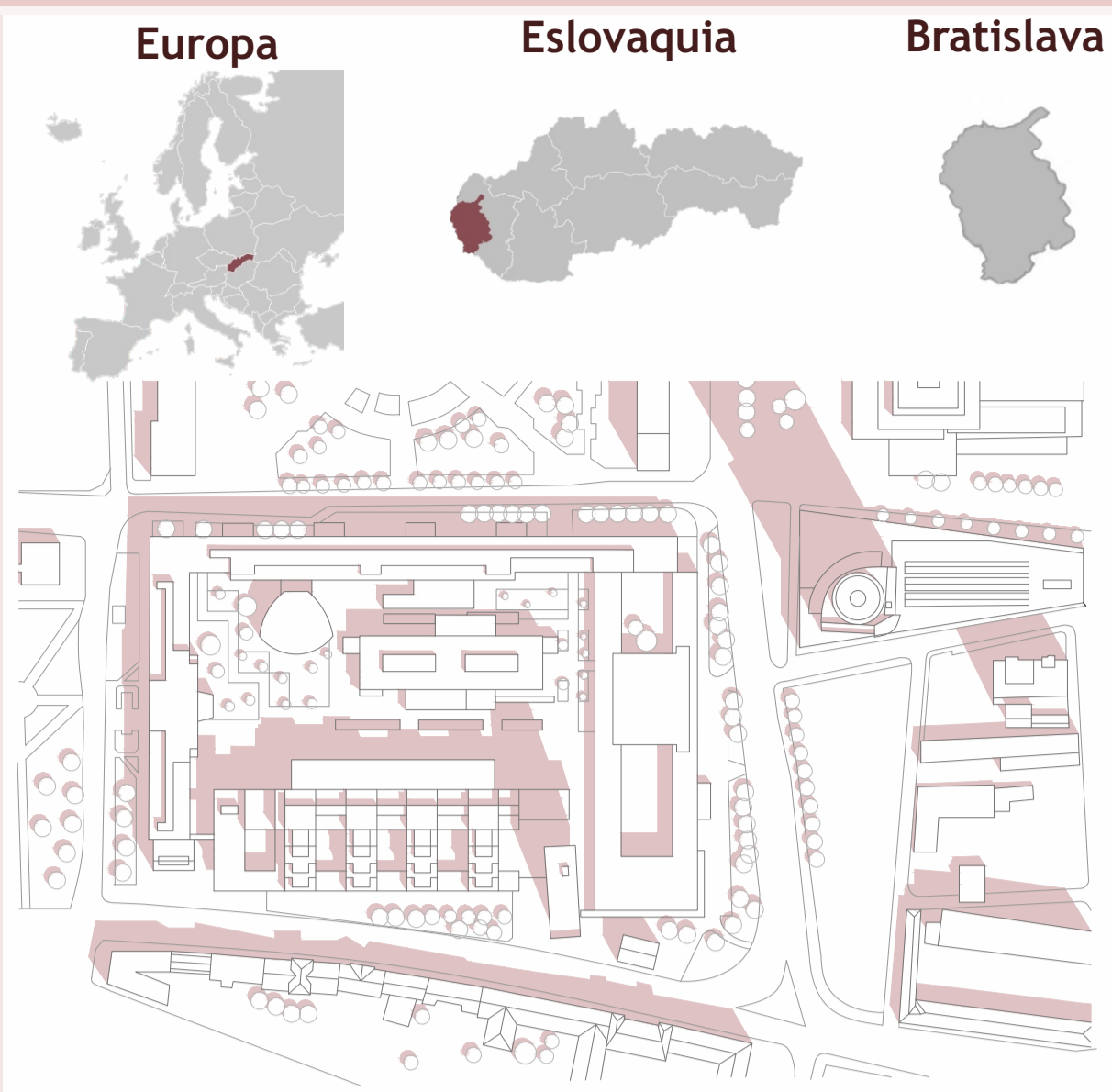
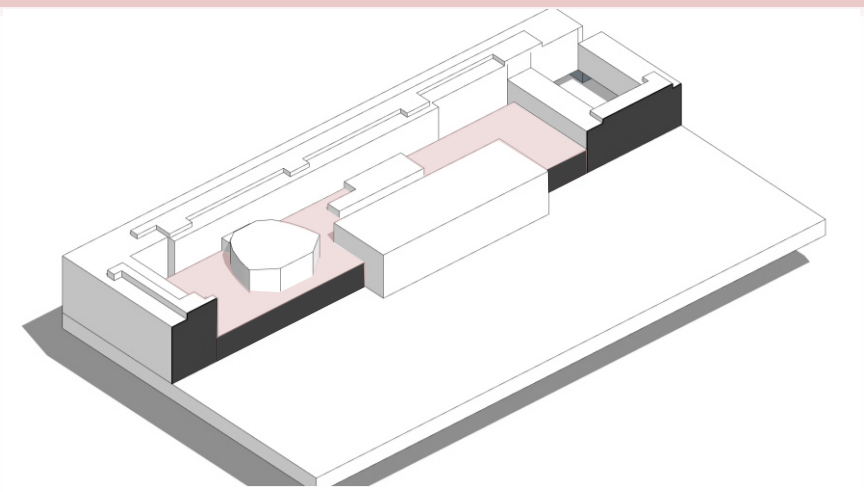


The project materializes physical and symbolic 'lanterns' that emerge both from this existing building and from the surroundings of the ground where it is located, indicating new and renewed situations, without eliminating the origins of the places where they are located and highlighting the spatial opportunities that always were there present. The new base not only maximizes the functional possibilities of the architectural proposal, but also unifies and integrates a terrain currently marked also by its irregular and varied slopes. When moving and locating the garages in the underground levels, large free areas are ideal for the development of spaces equipped for recreation and relaxation.



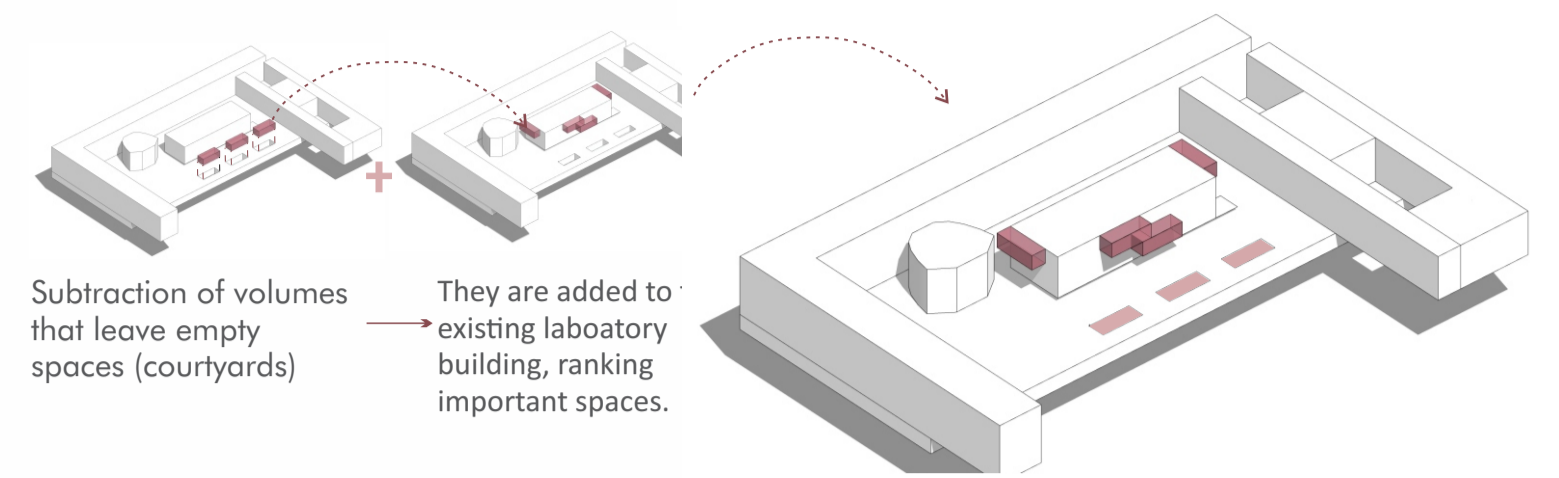
**1 EXTENSION OF THE SLOPE OF THE GROUND**

For its use in its upper level for public space and its lower level for covered functions



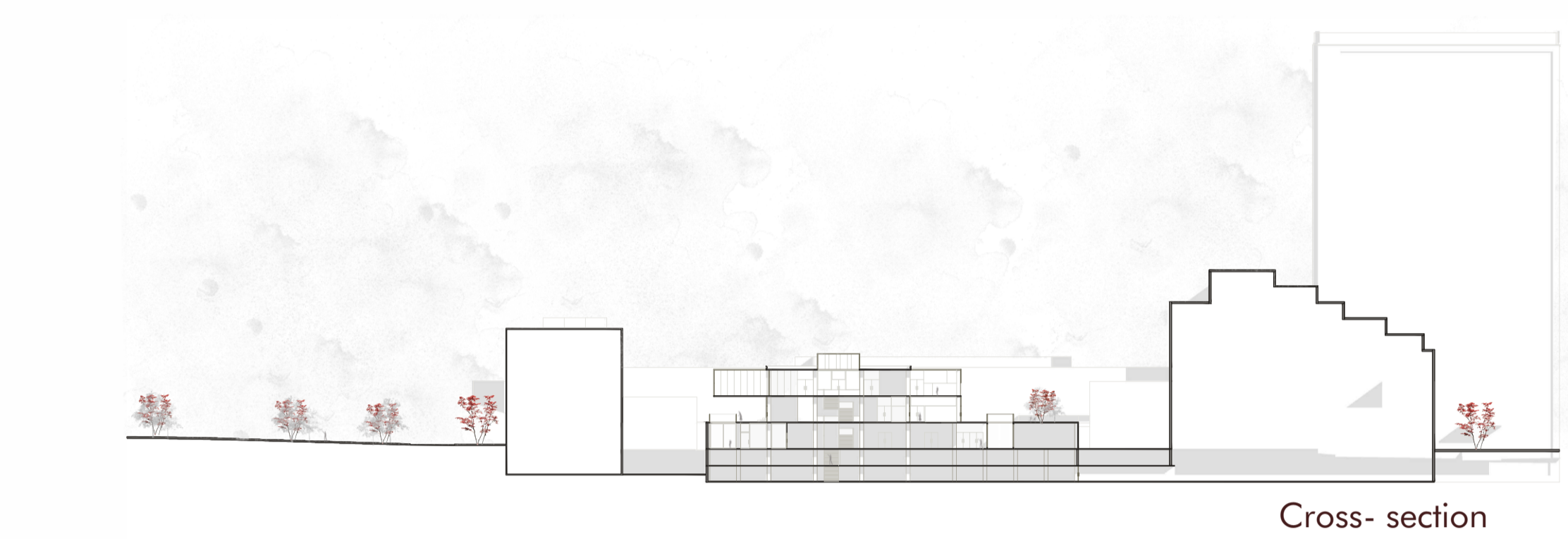
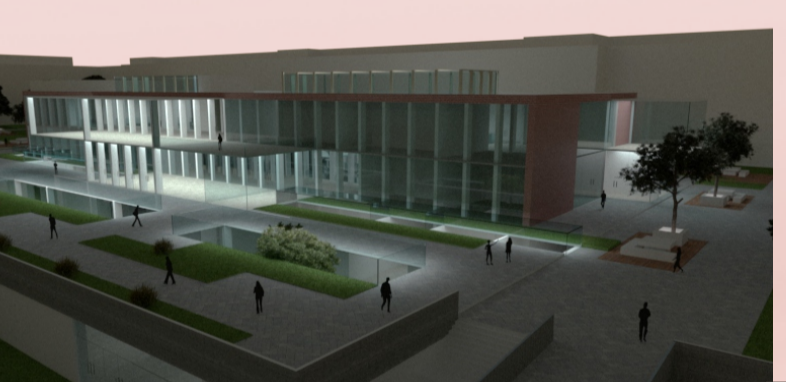
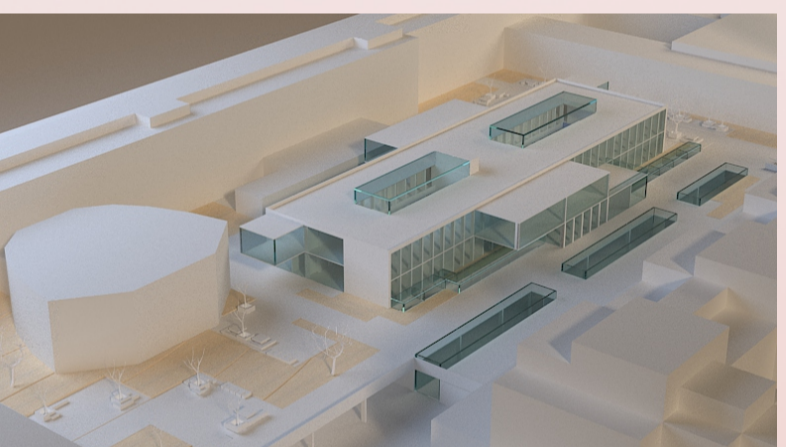
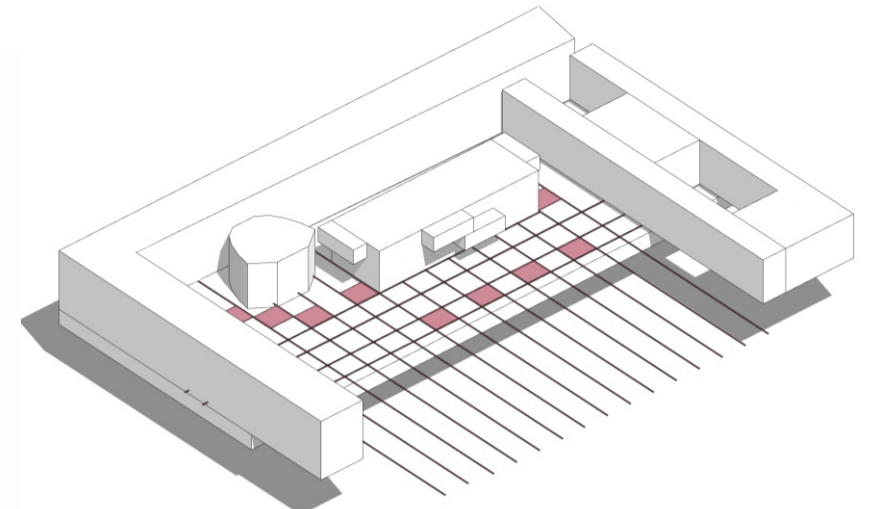
**2 FLASHLIGHTS**

- Spatial Organizing
- Functions Climate

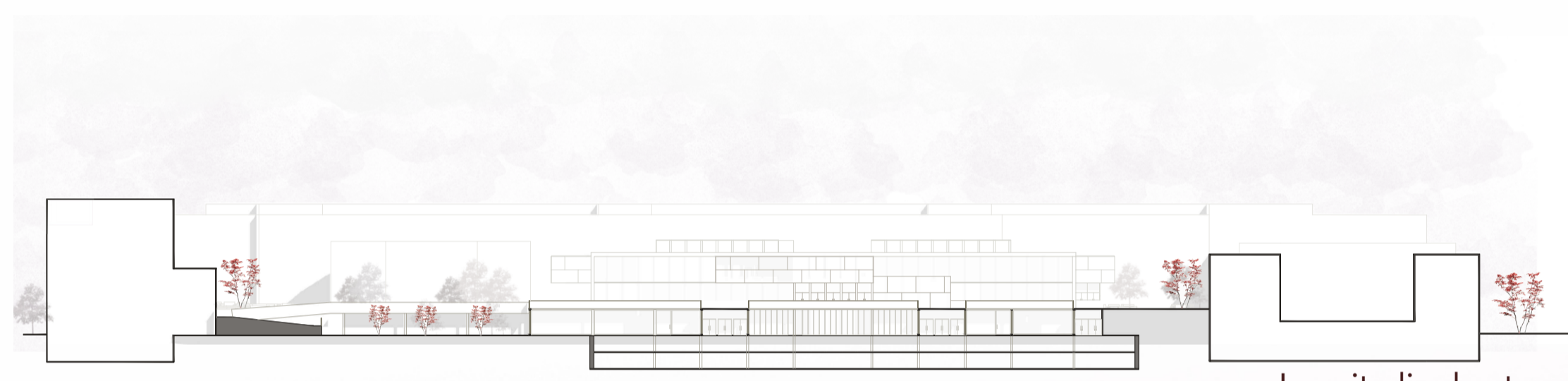


**3 TERRITORIAL INTEGRATION**

Spatial and conceptual continuity of the idea of lanterns

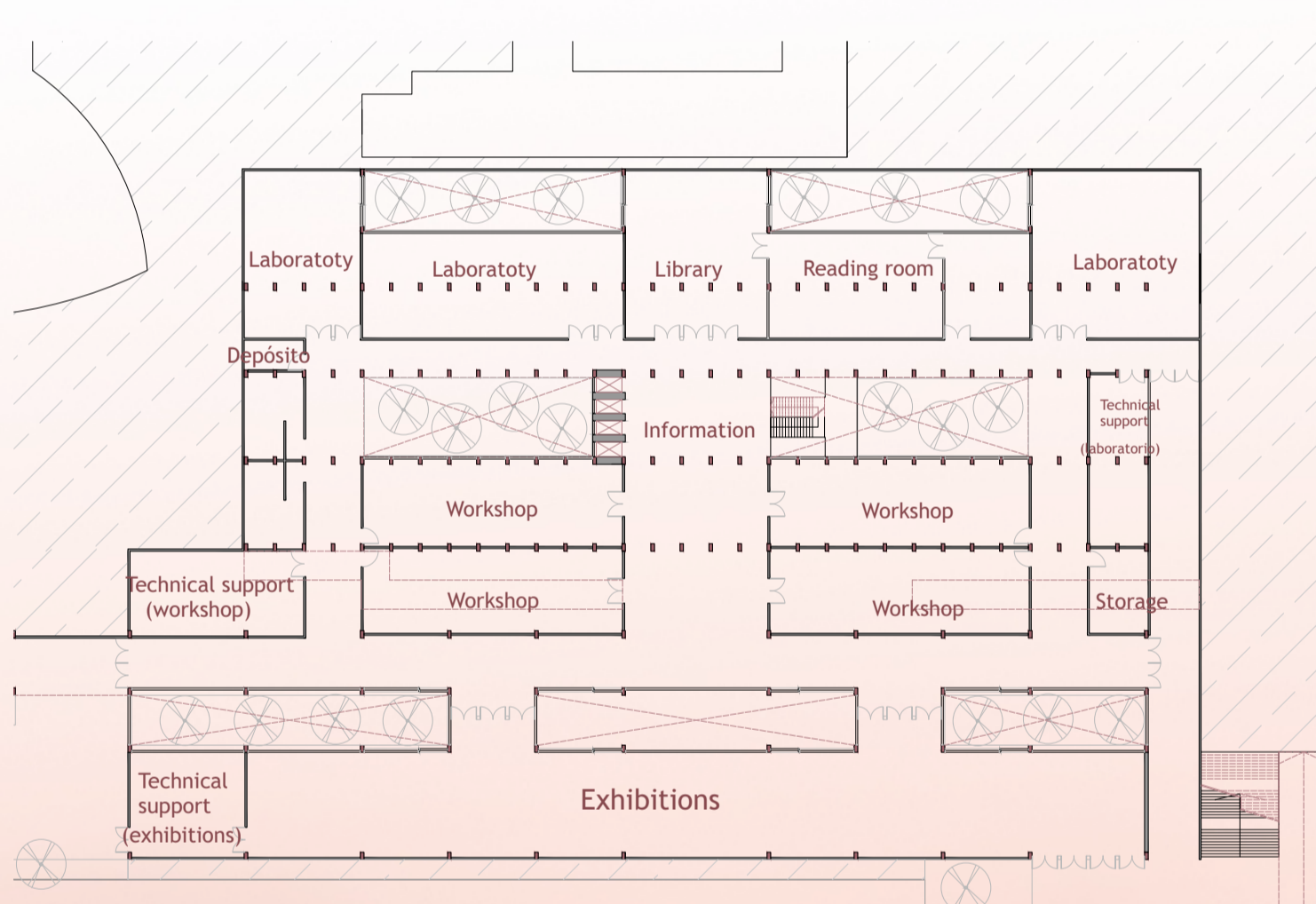
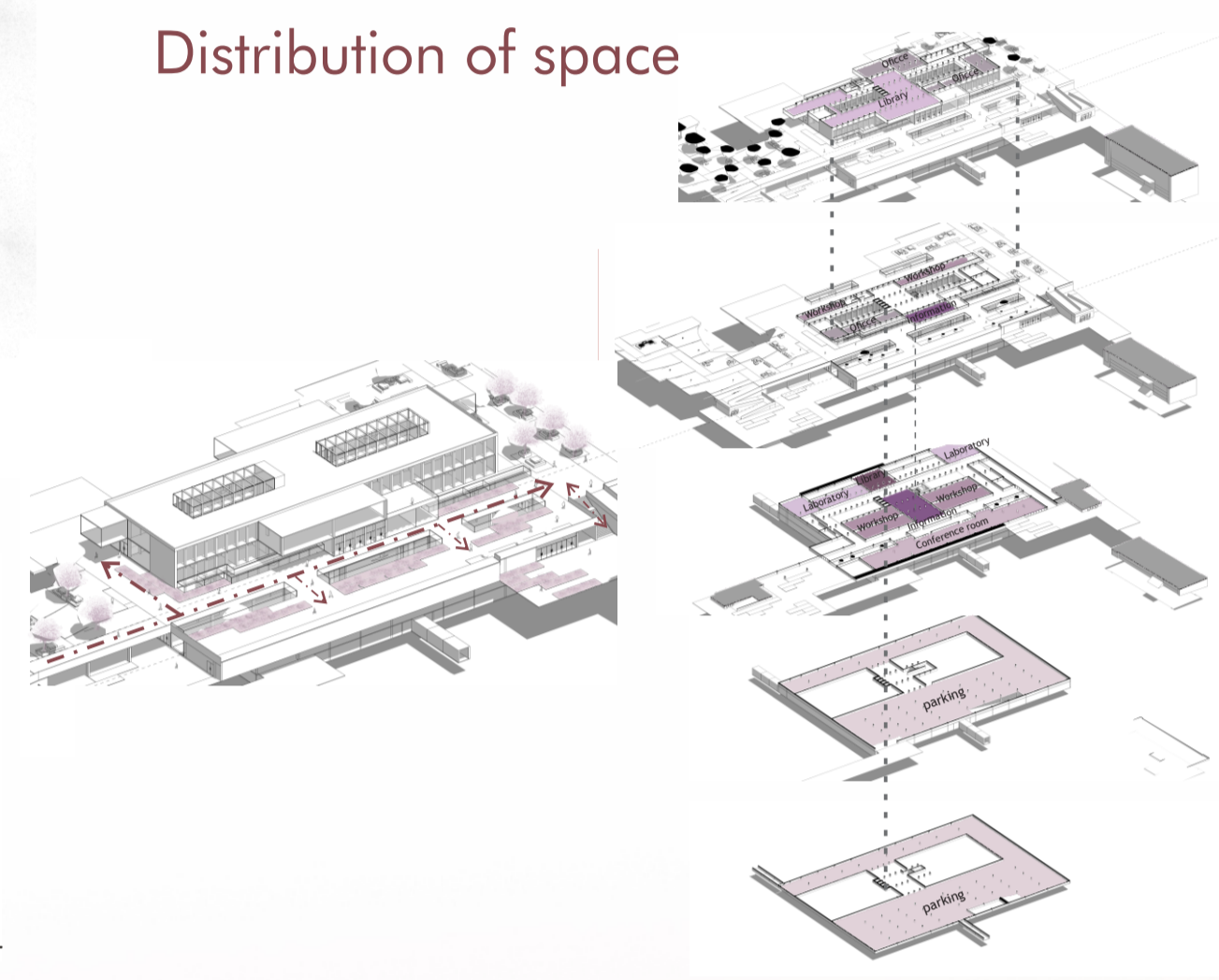


Cross-section

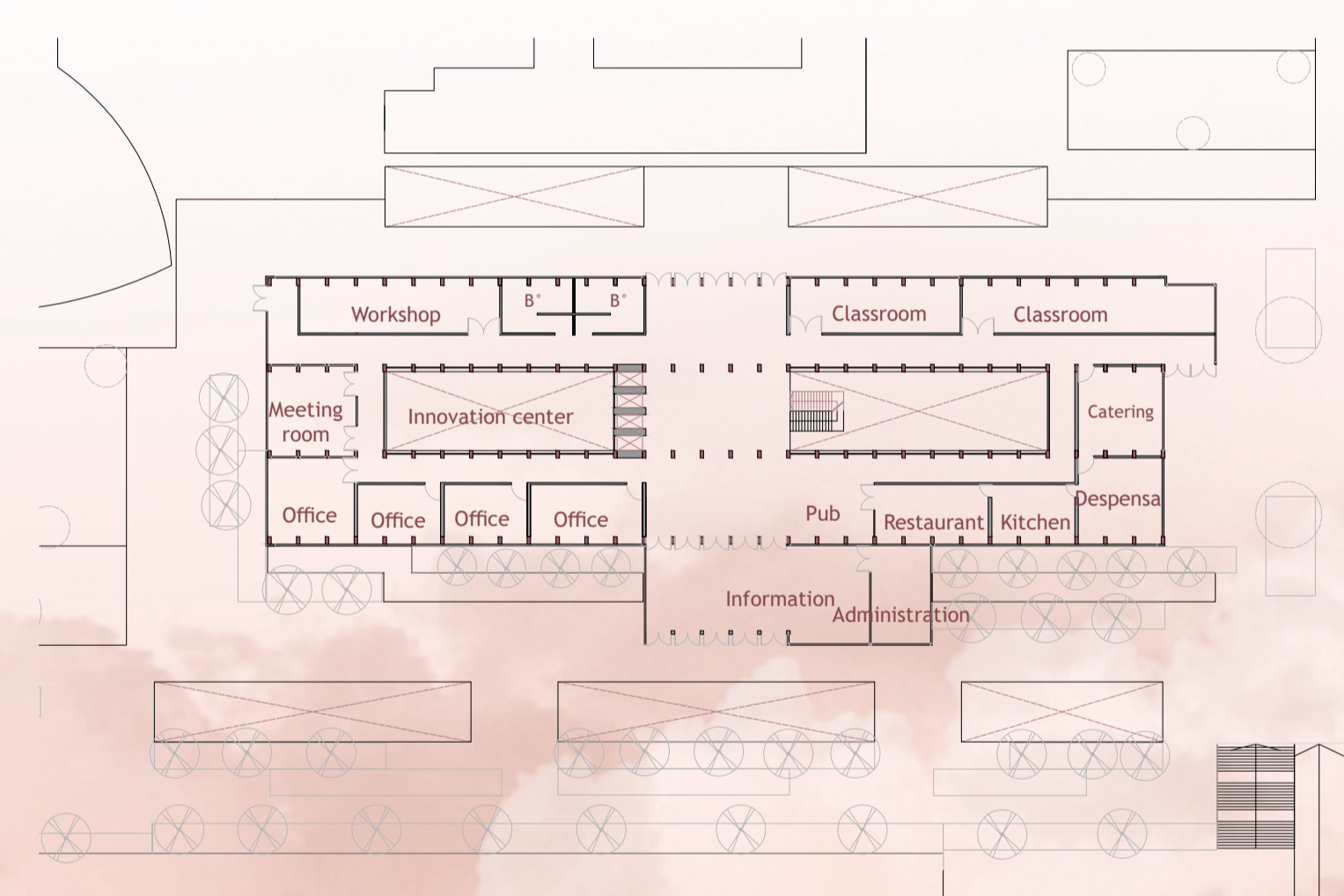


Longitudinal cuts

**Distribution of space**



Ground floor, level 0,0



Floor 1, floor, level 4.80m

