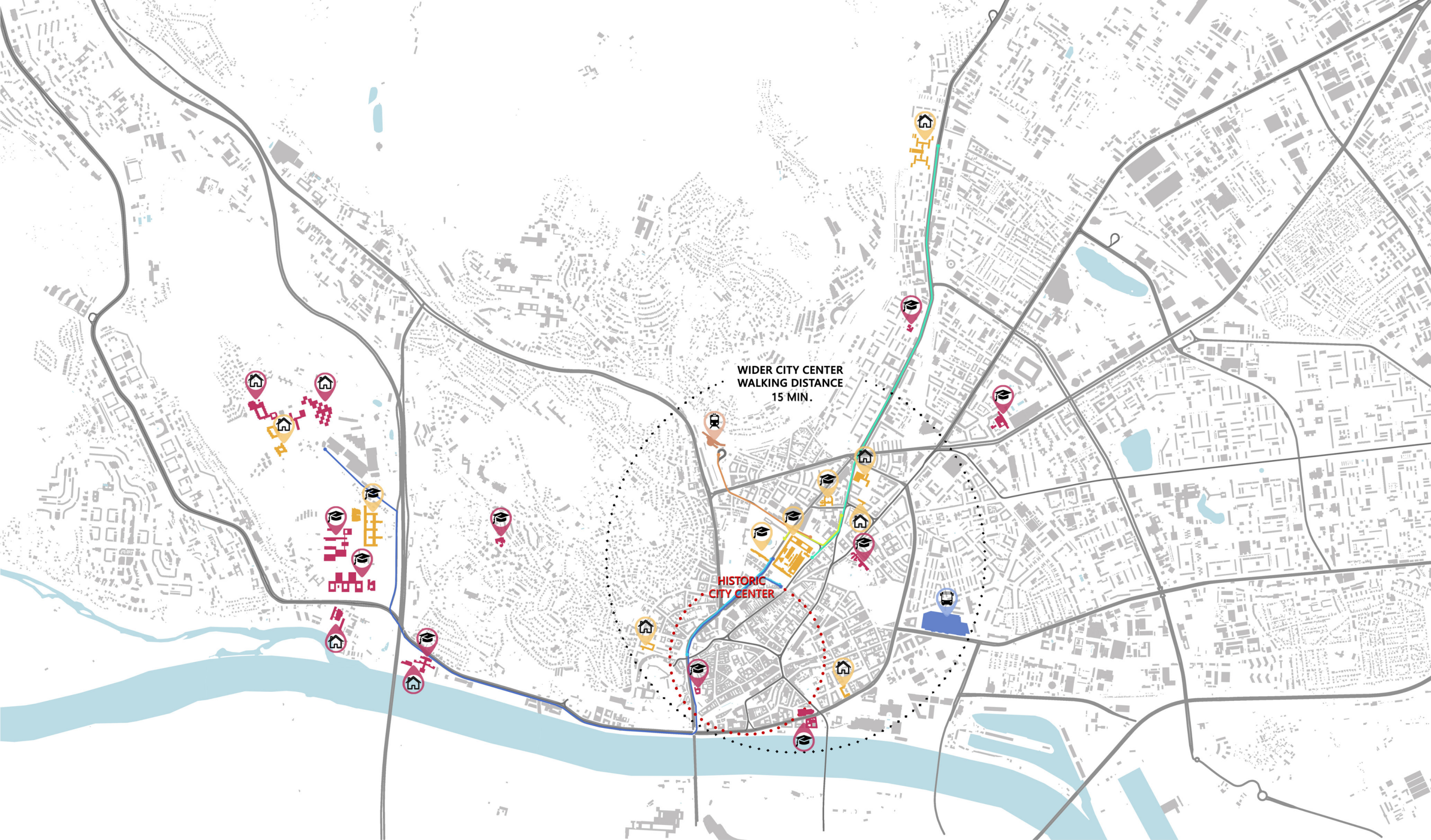




SCHWARZPLAN

0m 200 500 1000



BROADER CONNECTIONS

BUILDINGS STU

BUILDINGS UK



COLLEGE



HOSTEL

BUS

20 MIN. (SLÁVIČIE ÚDOLIE - KOLLÁROVO NÁMESTIE)

TRAMWAY

13 MIN. (MLADÁ GARDA - STU)

TRAMWAY

4 MIN. (HLAVNÁ STANICA - STU)

BUS

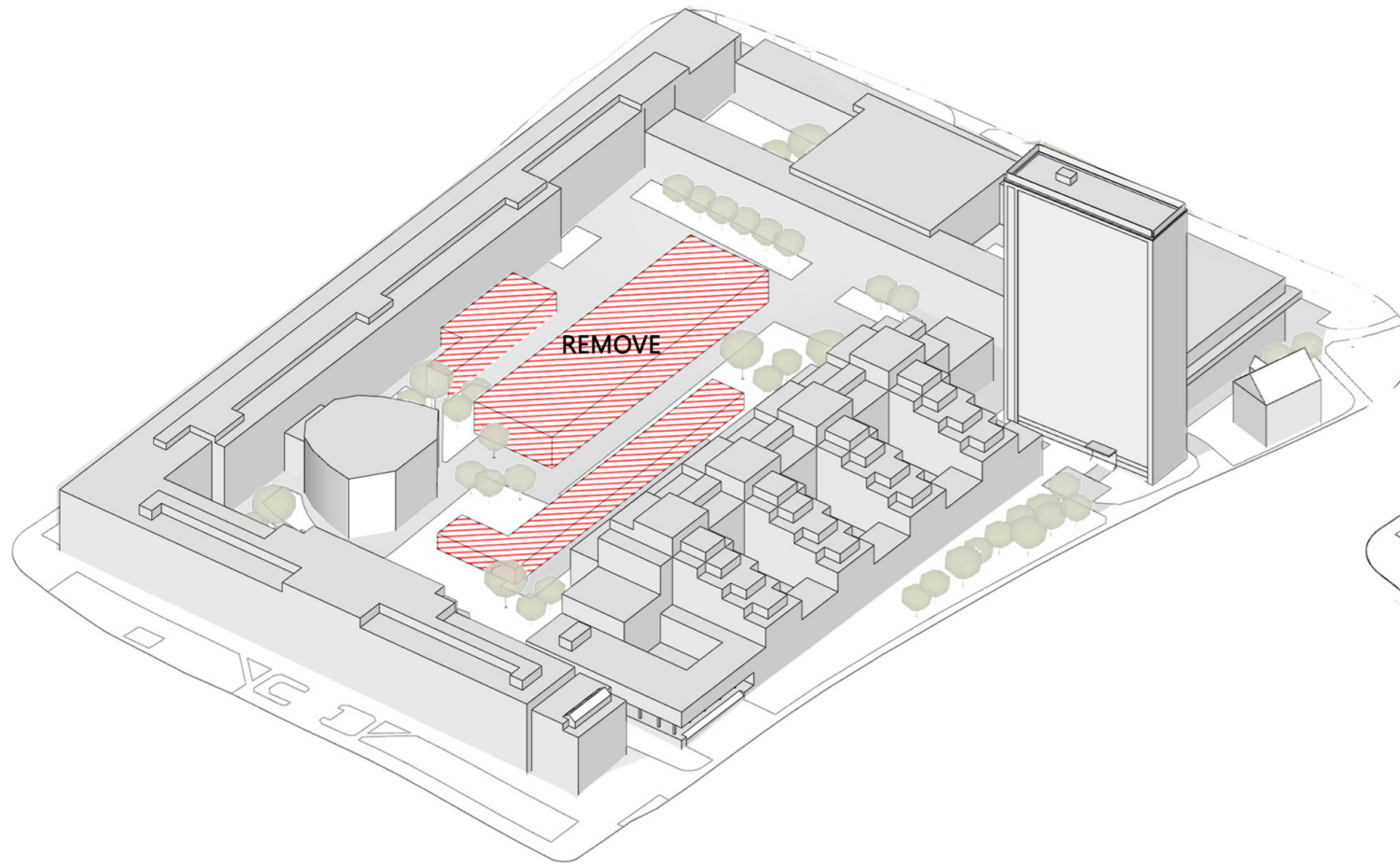
2 MIN. (ZOCHOVA - KOLLÁROVO NÁMESTIE)

BUS

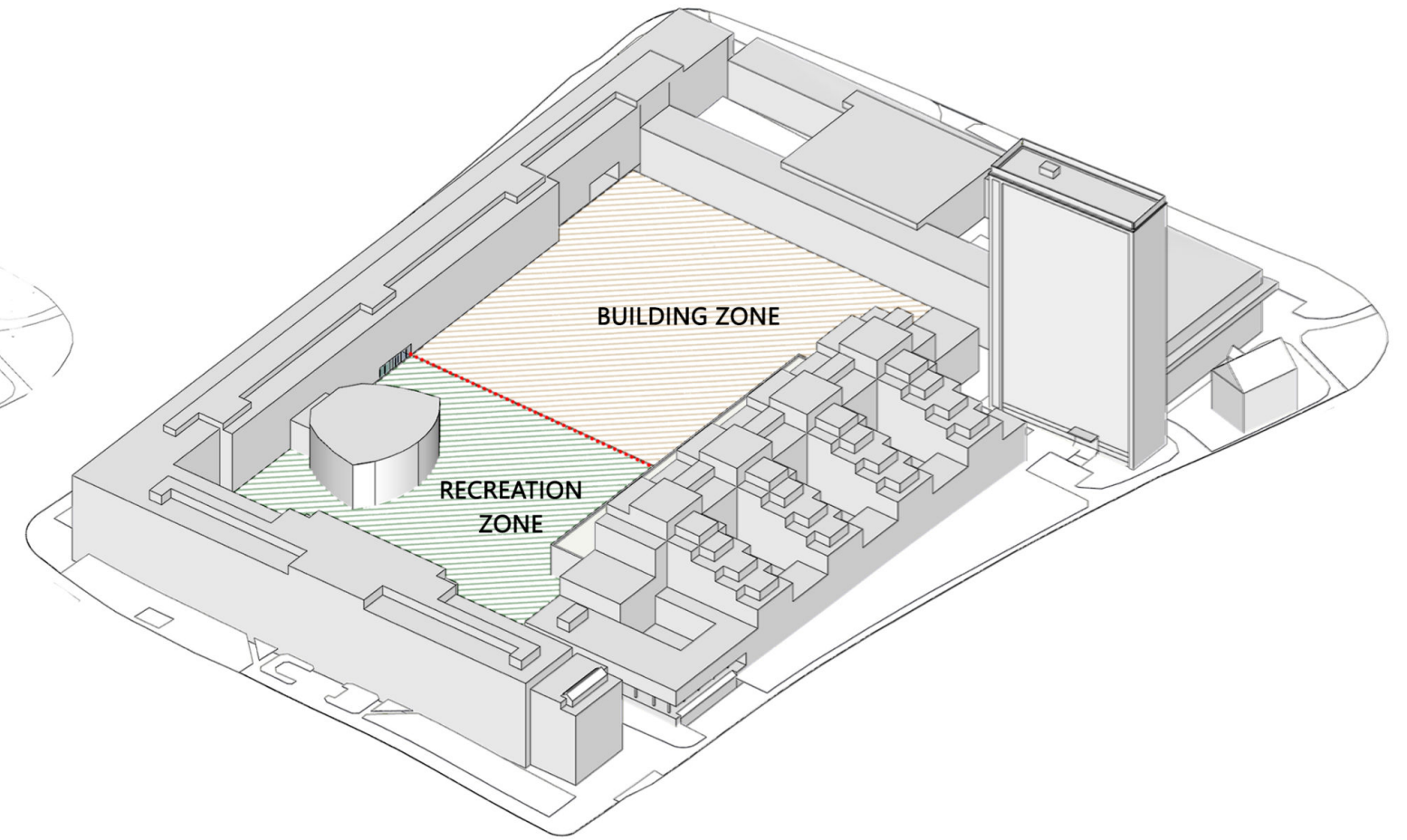
2 MIN. (BLUMENTÁL - STU)



3D ORTOFOTOMAP

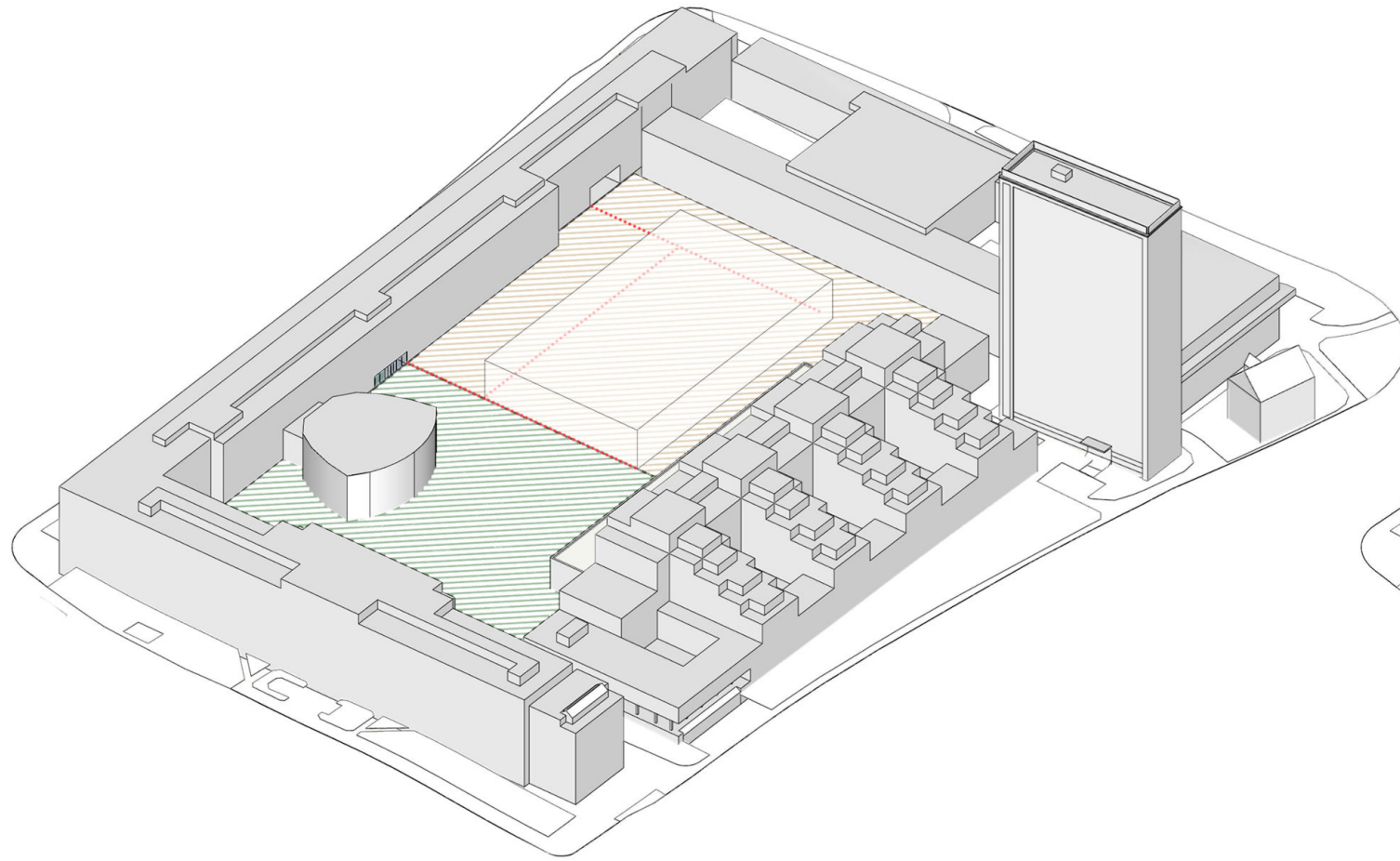


- remove of existing buildings in the courtyard
- poor technical and aesthetic condition of buildings
- opening space for one compact object

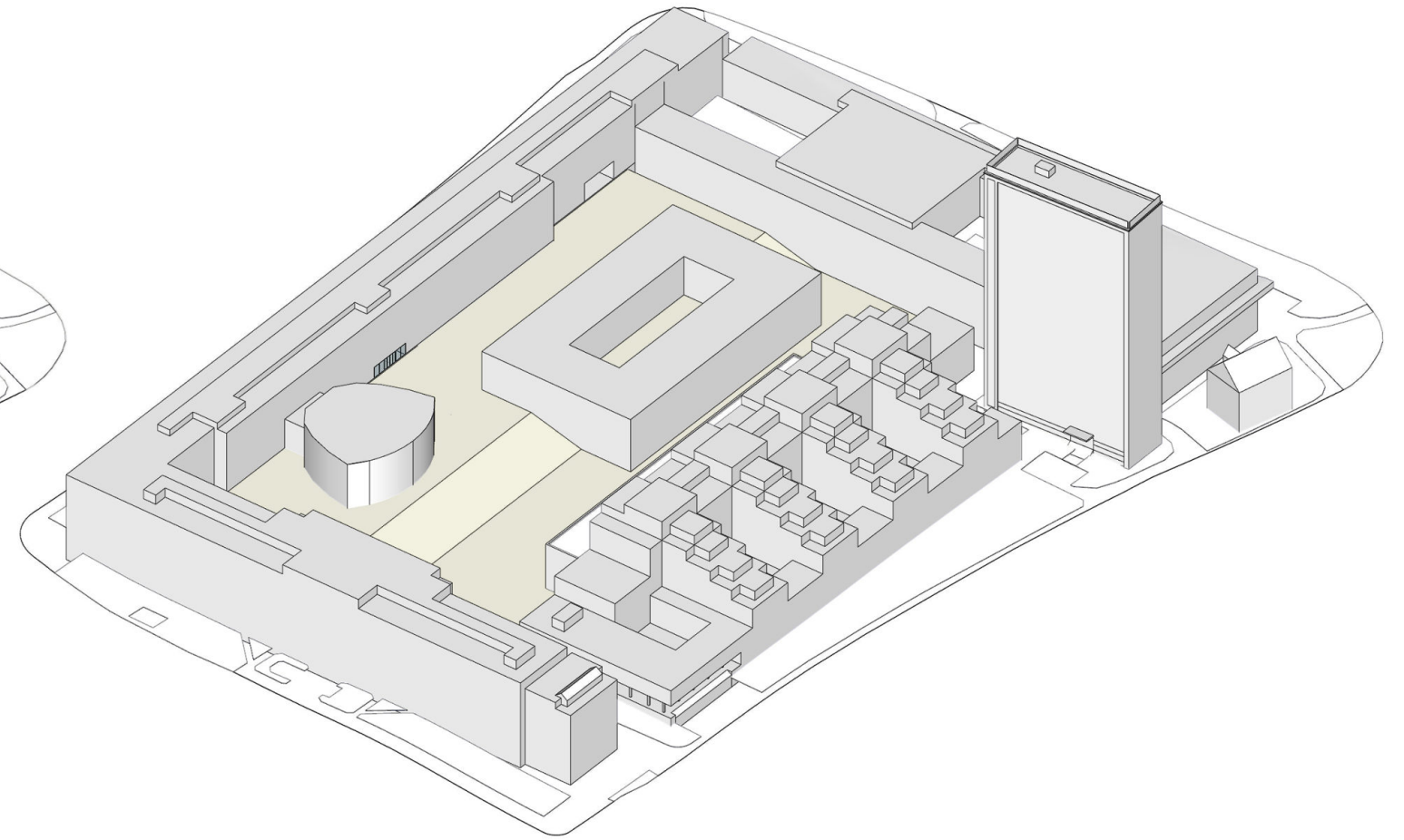


- compositional division of the territory into two units - recreation zone and building zone
- creation of a free space for the public with a boarding area in front of the auditorium
- Allocation of land for a new building in the NE part

CONCEPT

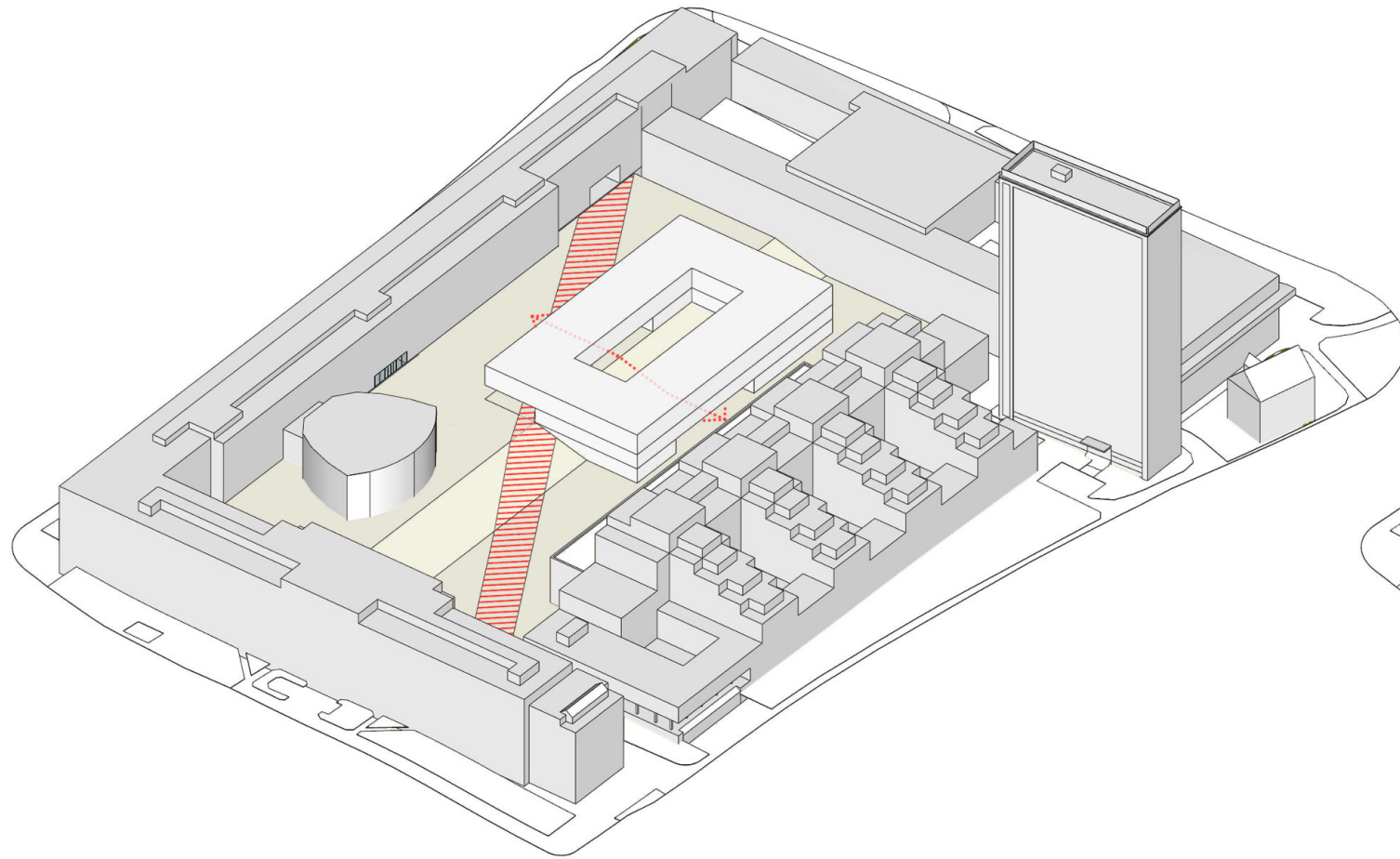


- placement of a new compact object on the longitudinal axis of the courtyard
- connection of the foyer of the Faculty of Mechanical Engineering to the courtyard
- the border of the SW façade is lined by a connection from the foyer
- the border of the NE façade lines the connection with the street
- the NW border of the facade follows the border of the original building

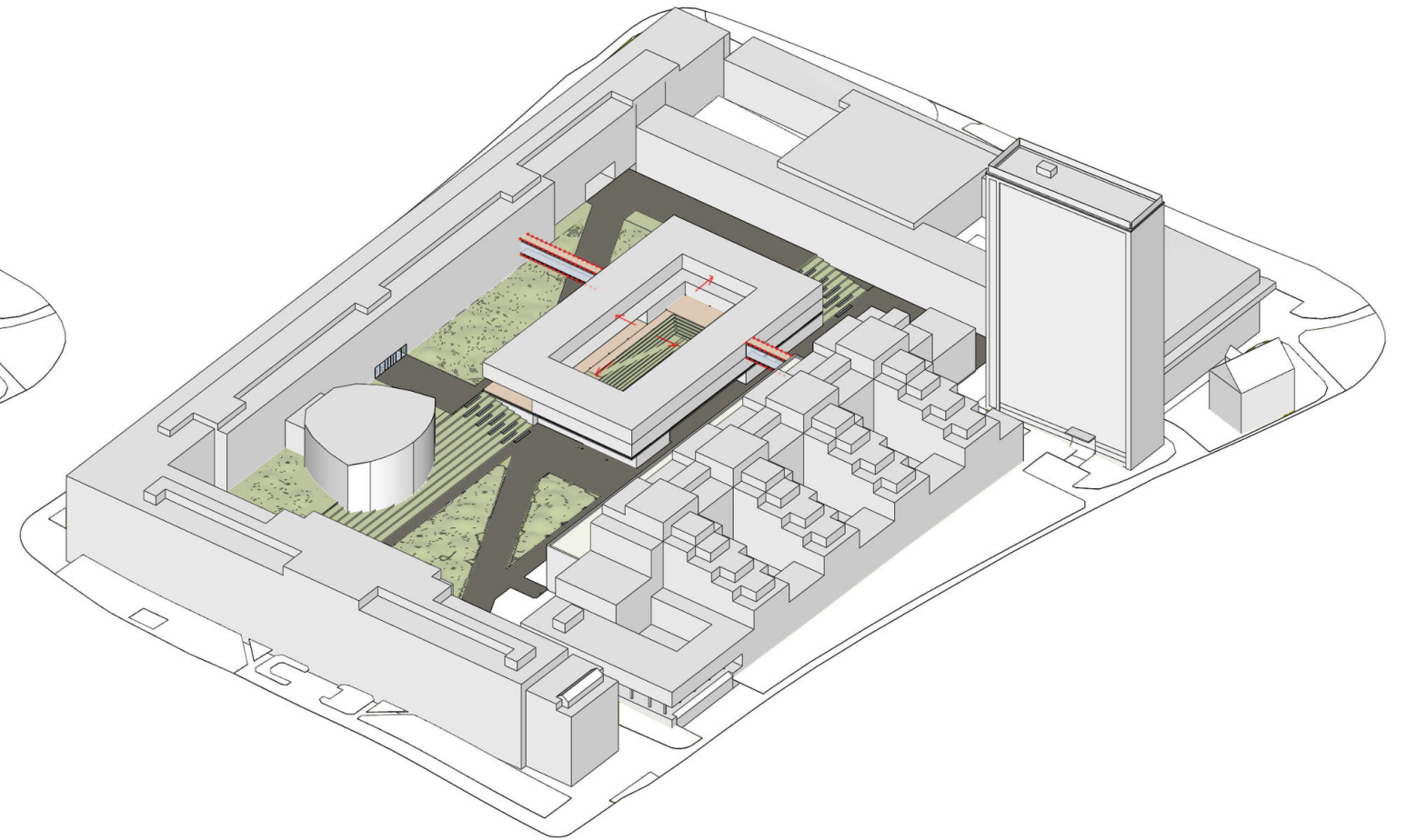


- creation of an atrium for better interior lighting
- modification of the sloping terrain on the longitudinal axis of the created atrium

CONCEPT

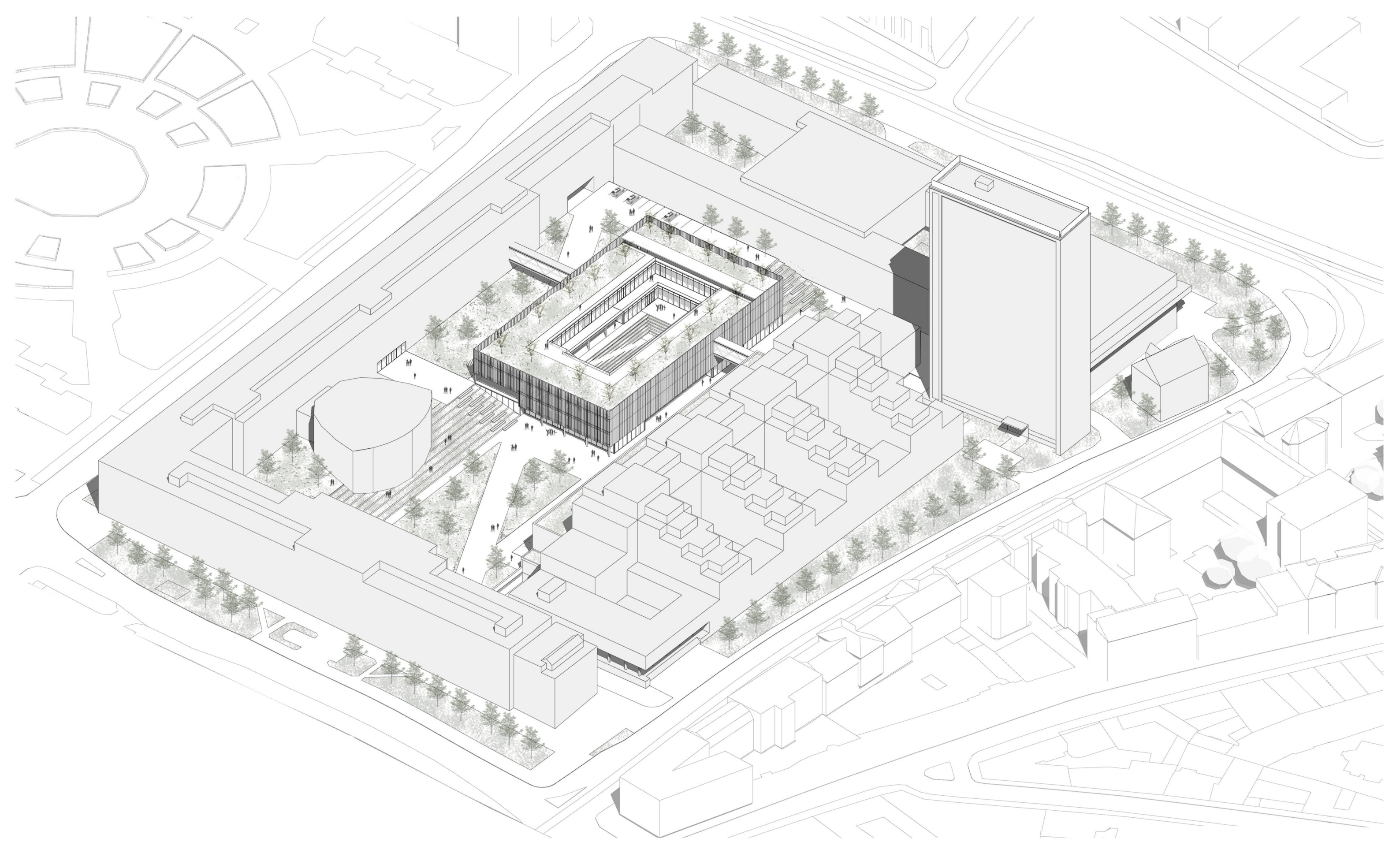


- creation of a visual diagonal connection through the territory of the courtyard
- embedding of the mass for visual connection of the main entrances to the courtyard
- created a transition through the atrium across the entire object

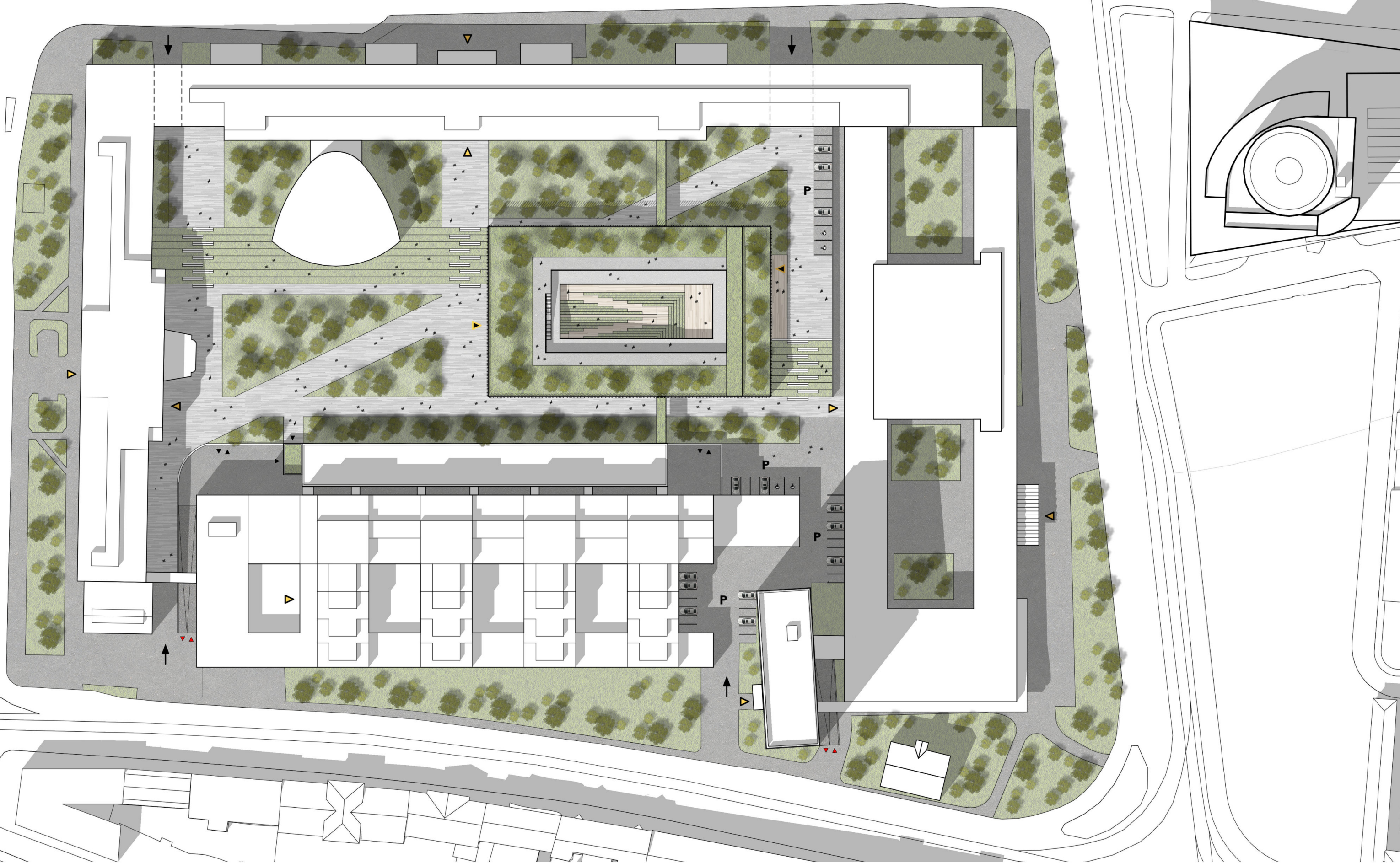


- creation of a connecting bridge with the Faculty of Mechanical Engineering and Chemistry
- creation of an inner terrace on the top floor by embedding the mass
- landscaping - creation of residential vegetation terraces for recreation and relaxation
 - creation of gently undulating terrain for better mental well-being

CONCEPT



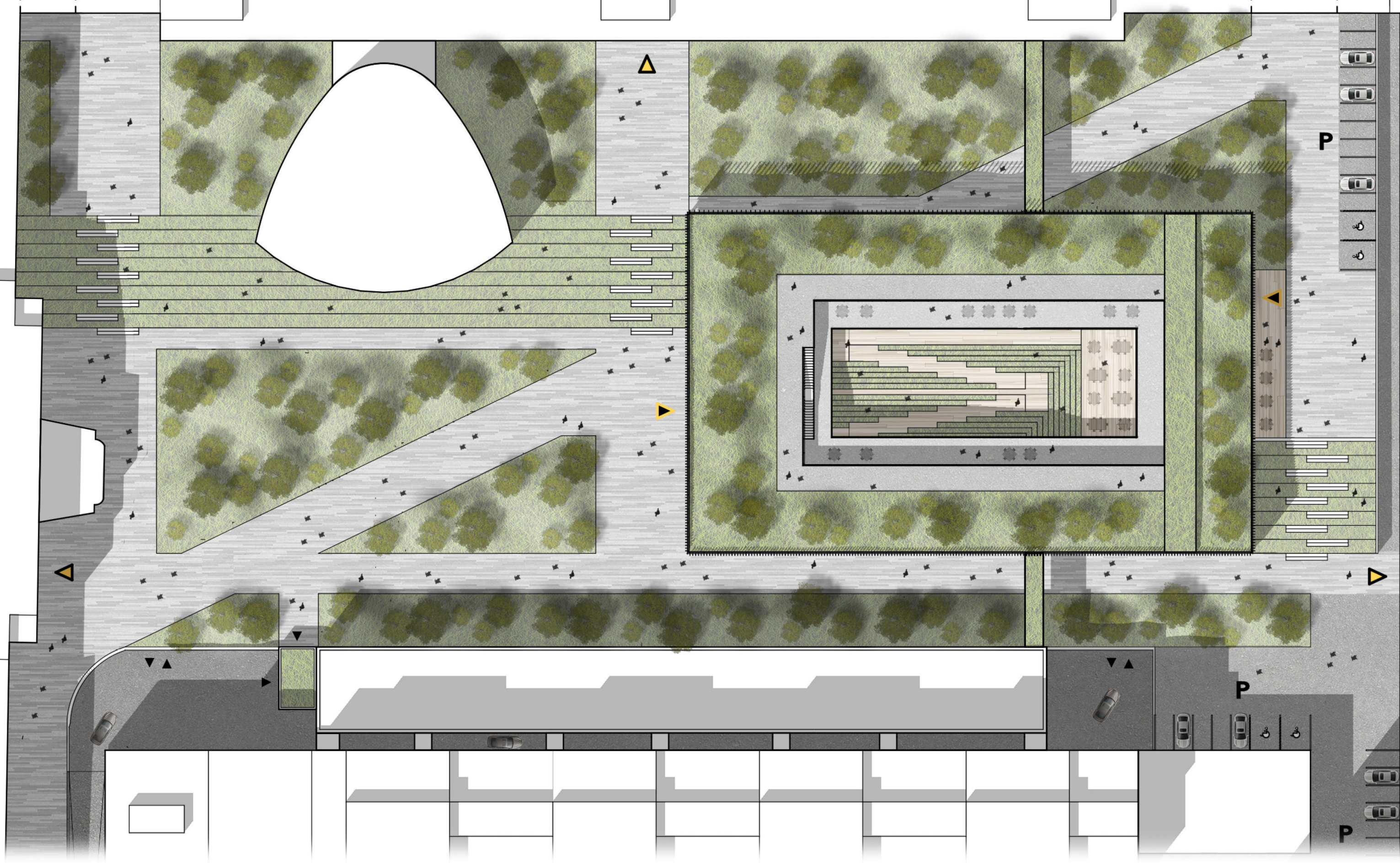
AXONOMETRY



SITUATION M 1:1000



0m 5 10 20



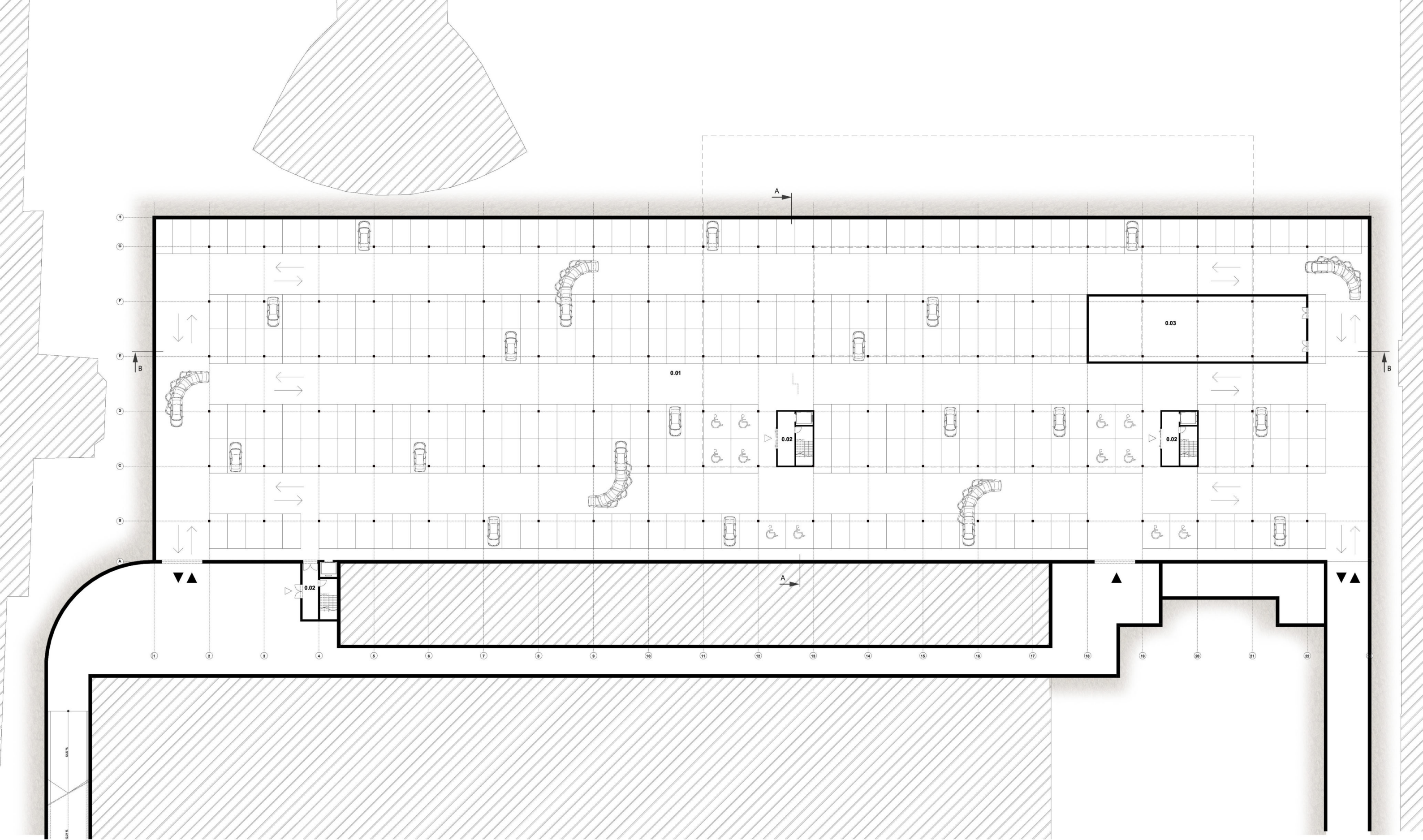
SITUATION M 1:500

LEGEND:

- ▲ garage input
- ▲ Faculty entrance
- ▲ main entrance to the building
- P parking on terrain



0m 5 10 20



UNDERGROUND GARAGES

LEGEND:

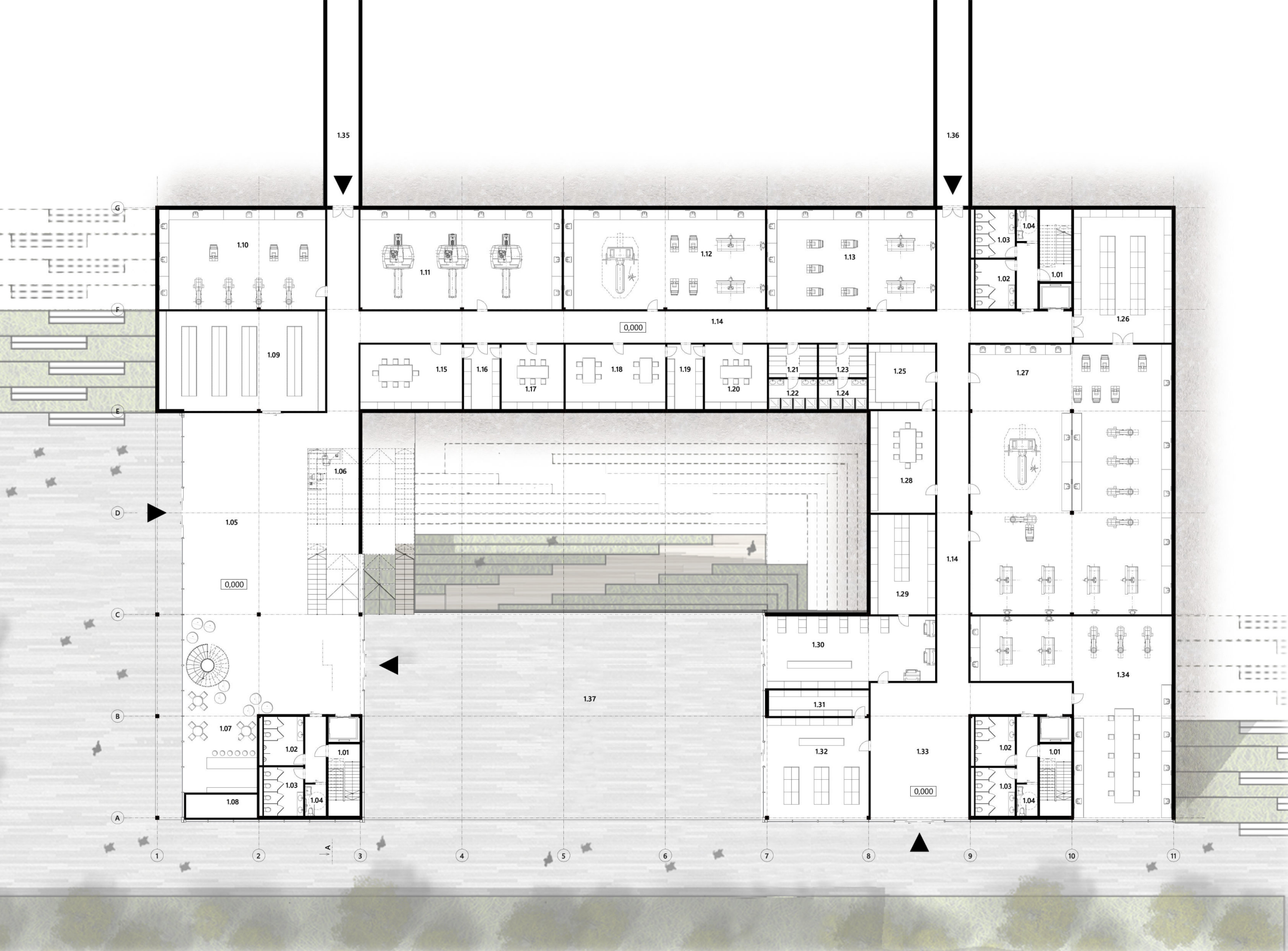
0.01	underground garage	8 570,00 m ²
0.02	communication core 1,2,3	40,25 m ²
0.03	technical room	316,25 m ²
	total area	9 007,00 m ²

BILANCE:

parking 2,7 x 5,1 m	311
imobil 4 x 5,1 m	12
total parking	323



0m 5 10 20



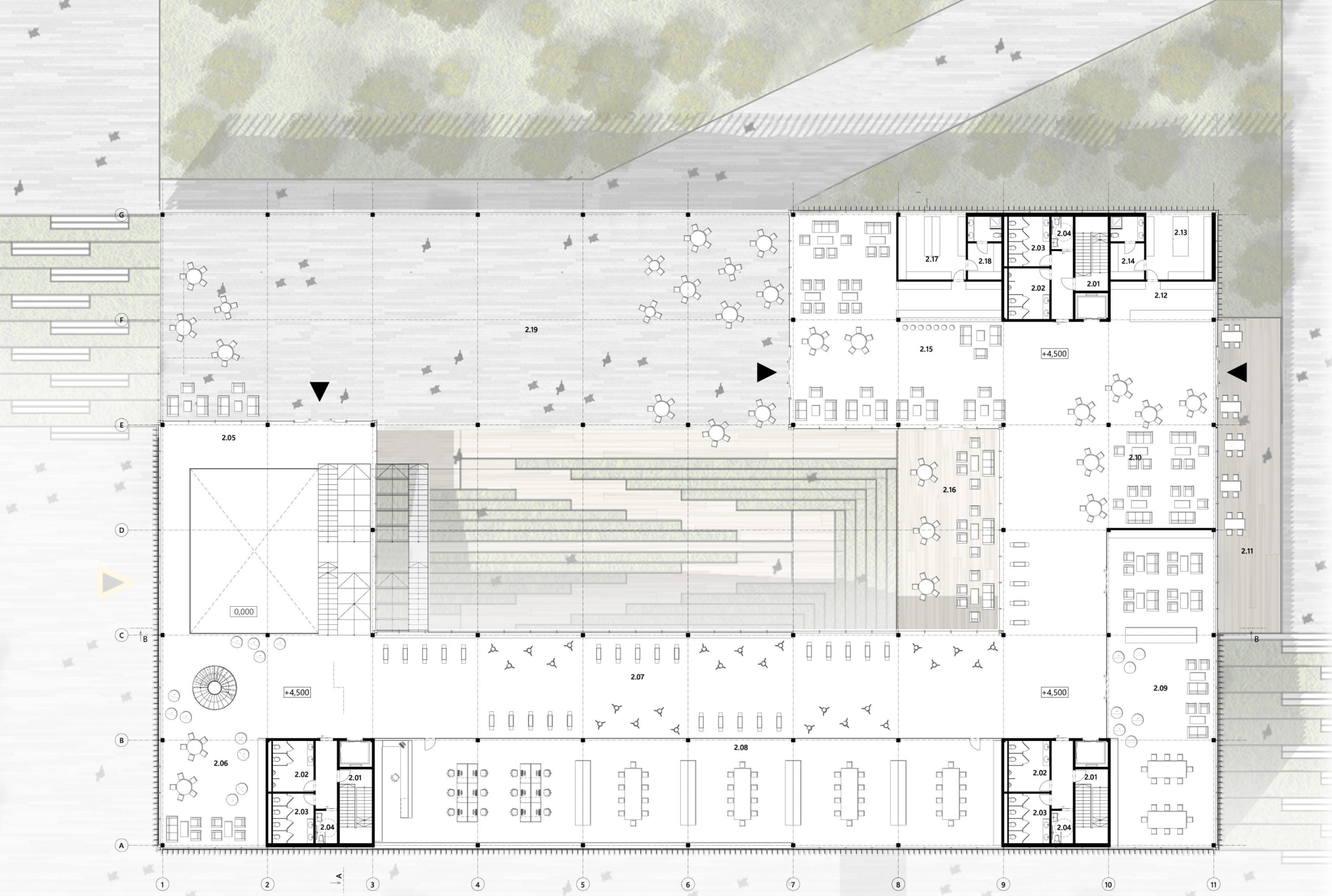
LEGEND:

1.01 communication core 1, 2, 3	28,30 m ²
1.02 WC men 1, 2, 3	12,20 m ²
1.03 WC women 1, 2, 3	12,20 m ²
1.04 Barrier-free toilets 1, 2, 3	4,25 m ²
1.05 entrance hall with gallery	320,00 m ²
1.06 information	34,50 m ²
1.07 cafe - „KOLEČKO cafe“	59,25 m ²
1.08 warehouse	7,00 m ²
1.09 dressing room	105,20 m ²
1.10 engineering workshop	105,30 m ²
1.11 engineering workshop	127,50 m ²
1.12 engineering workshop	127,50 m ²
1.13 engineering workshop	106,50 m ²
1.14 corridor	271,25 m ²
1.15 workshop	41,70 m ²
1.16 warehouse	14,70 m ²
1.17 workshop	25,50 m ²
1.18 workshop	41,00 m ²
1.19 warehouse	14,70 m ²
1.20 workshop	25,50 m ²
1.21 men's locker room	10,00 m ²
1.22 men's showers	9,00 m ²
1.23 women's dressing room	10,00 m ²
1.24 women's showers	9,00 m ²
1.25 warehouse	27,30 m ²
1.26 warehouse	82,70 m ²
1.27 engineering workshop	344,75 m ²
1.28 workshop	41,70 m ²
1.29 warehouse	40,95 m ²
1.30 2D printing	74,75 m ²
1.31 warehouse	16,30 m ²
1.32 STU store	66,7 m ²
1.33 entrance hall	105,65 m ²
1.34 3D printing + model room	168,85 m ²
1.35 connecting corridor	60,75 m ²
1.36 connecting corridor	68,80 m ²
1.37 covered terrace	518,75 m ²
total area	2 621,25 m²
+ terrace	+ 518,75 m²
	3 140,00 m²

FLOORPLAN 1. M 1:300



0m 2 5 10



LEGEND:

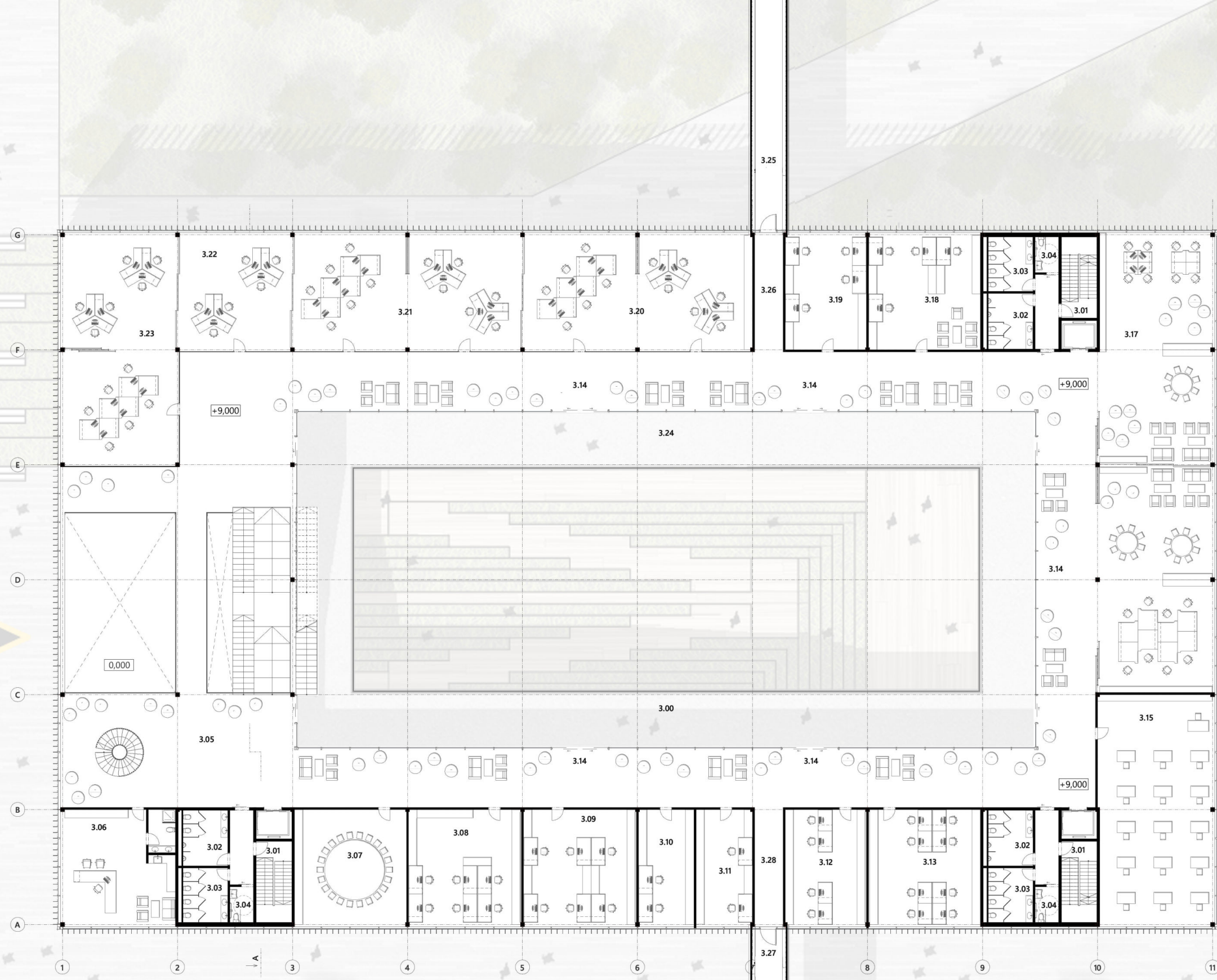
2.01 communication core 1, 2, 3	28,30 m ²
2.02 WC men 1, 2, 3	12,20 m ²
2.03 WC woman 1, 2, 3	12,20 m ²
2.04 Barrier-free toilets 1, 2, 3	4,25 m ²
2.05 entrance area with gallery	267,70 m ²
2.06 chillout zone	67,85 m ²
2.07 exhibition spaces	450,00 m ²
2.08 meditation	389,15 m ²
2.09 reading room	199,30 m ²
2.10 foodcourty	323,45 m ²
2.11 terrace - foodcourty	116,70 m ²
2.12 food expenditure	24,20 m ²
2.13 background - foodcourty	26,00 m ²
2.14 dressing room	12,20 m ²
2.15 cafe	226,50 m ²
2.16 terrace - cafe	122,55 m ²
2.17 warehouse	26,75 m ²
2.18 dressing room	12,20 m ²
2.19 covered terrace	785,50 m ²

total area	2 082,25 m ²
+ terrace	+ 1 024,75 m ²
	<u>3 106,00 m²</u>

FLOORPLAN 2. M 1:300



0m 2 5 10



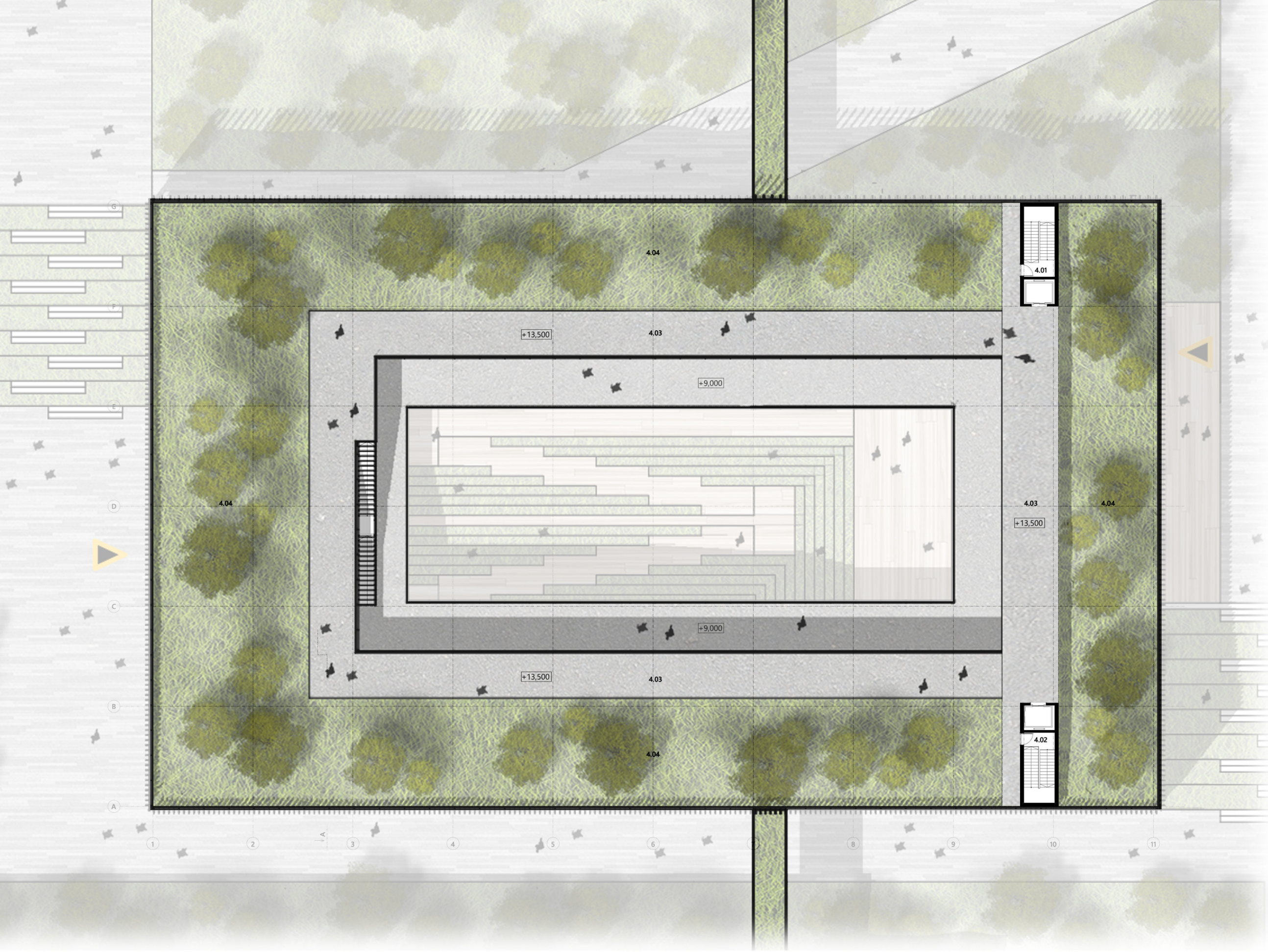
LEGEND:

3.01 communication core 1, 2, 3	28,30 m ²
3.02 WC men 1, 2, 3	12,20 m ²
3.03 WC woman 1, 2, 3	12,20 m ²
3.04 Barrier-free toilets 1, 2, 3	4,25 m ²
3.05 relax zone with gallery	272,10 m ²
3.06 STU Rector's Office	65,85 m ²
3.07 conference room	65,00 m ²
3.08 office	65,50 m ²
3.09 office	65,50 m ²
3.10 office	32,15 m ²
3.11 office	32,75 m ²
3.12 office	47,20 m ²
3.13 office	65,00 m ²
3.14 chillout zone	554,00 m ²
3.15 classroom	133,40 m ²
3.16 open study room	133,40 m ²
3.17 open study room	133,40 m ²
3.18 cabinet	65,00 m ²
3.19 cabinet	47,20 m ²
3.20 coworking	135,80 m ²
3.21 coworking	135,80 m ²
3.22 coworking	67,90 m ²
3.23 coworking	136,50 m ²
3.24 terrace	534,50 m ²
3.25 connecting bridge	52,50 m ²
3.26 corridor	16,80 m ²
3.27 connecting bridge	32,00 m ²
3.28 corridor	16,80 m ²
total area	2 428,50 m²
+ terrace	+ 534,50 m²
	2 963,00 m²

FLOORPLAN 3. M 1:300



0m 2 5 10



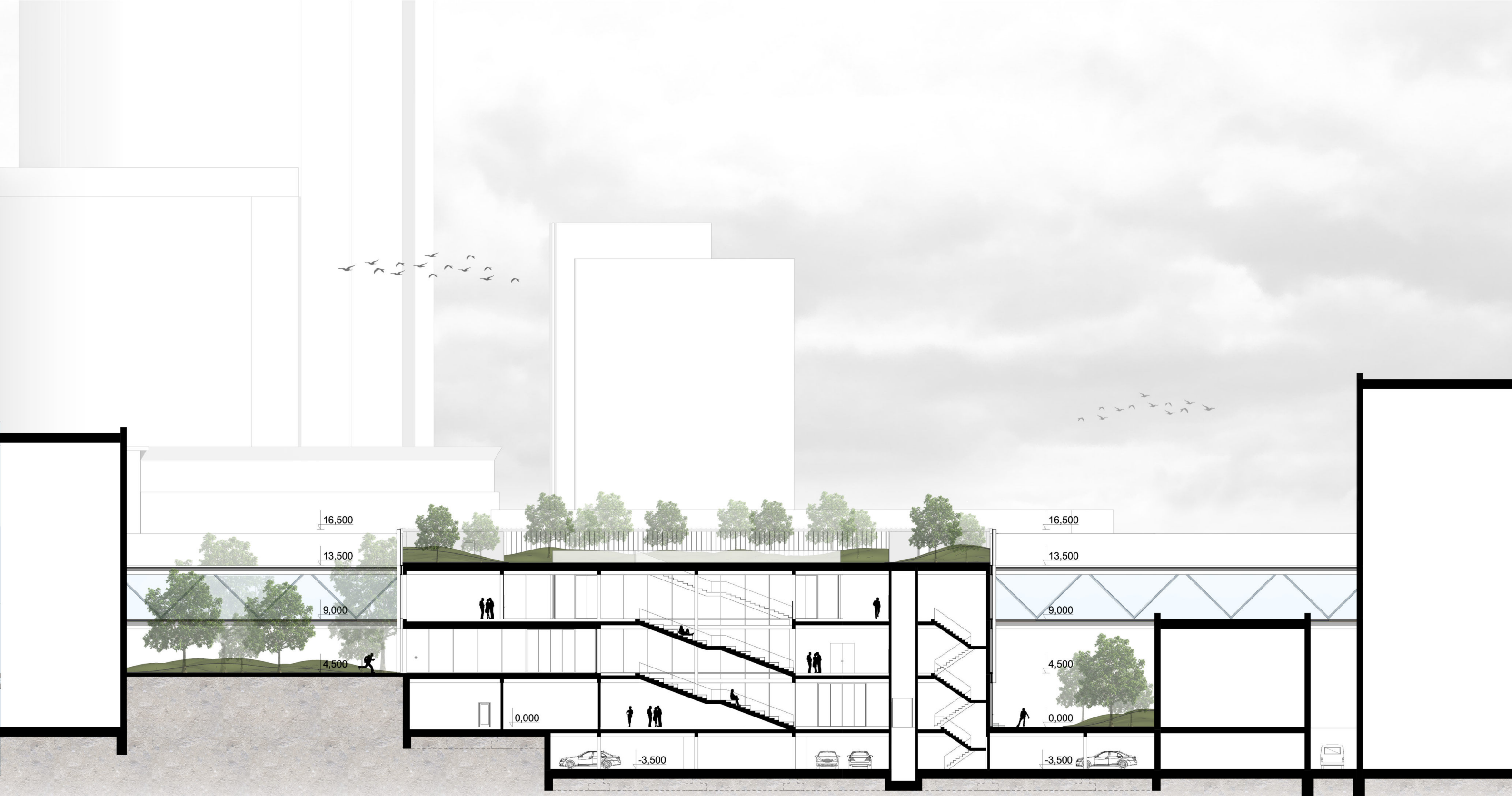
LEGEND:

4.01 communication core	19,25 m ²
4.02 communication core	19,25 m ²
4.03 terrace	746,50 m ²
4.04 park - landscaping	1 935,00 m ²
total area	38,50 m²
+ terrace	+ 2 681,50 m²
	2 720,00 m²

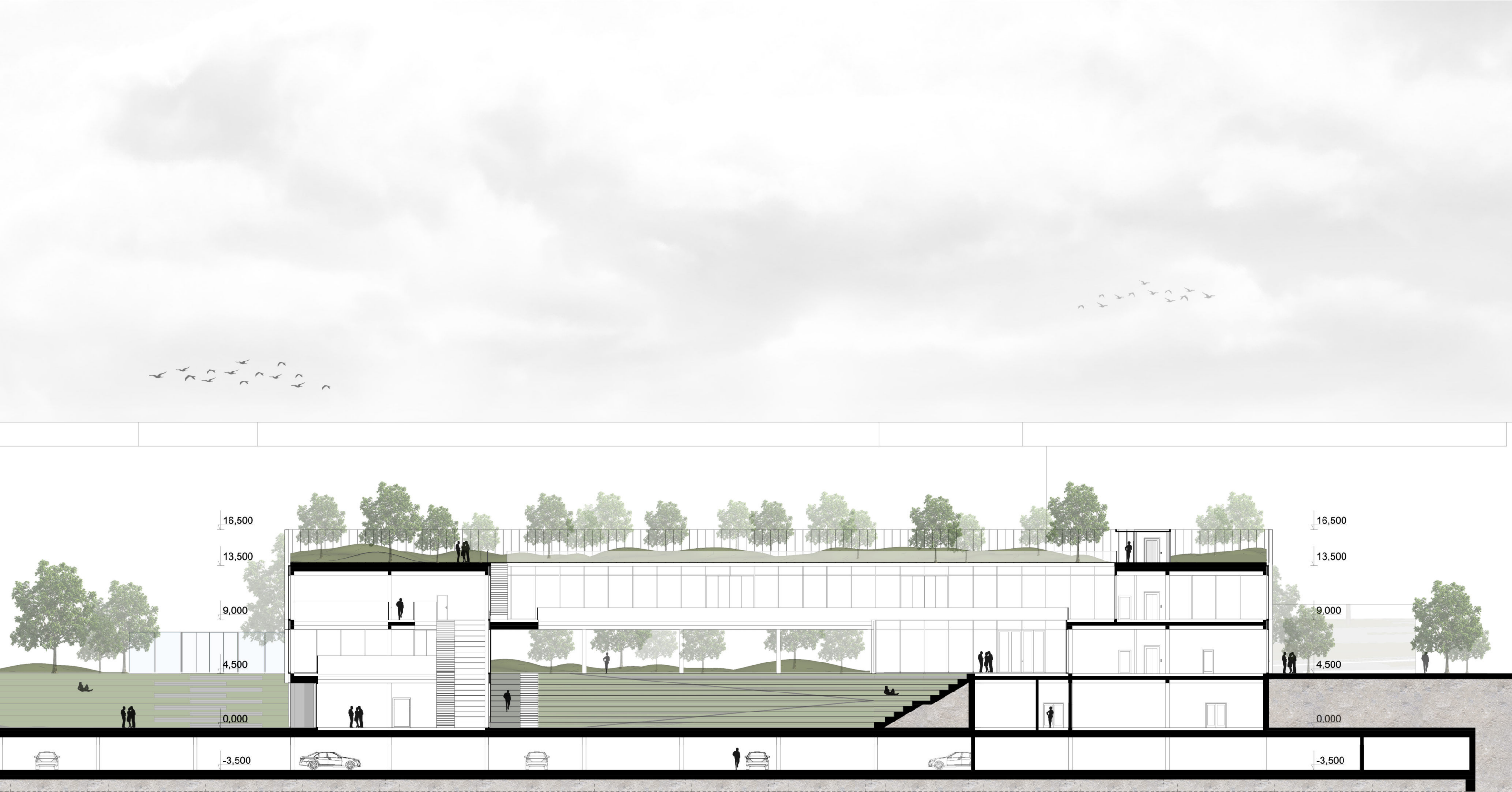
FLOORPLAN 4. - ROOF M 1:300



0m 2 5 10

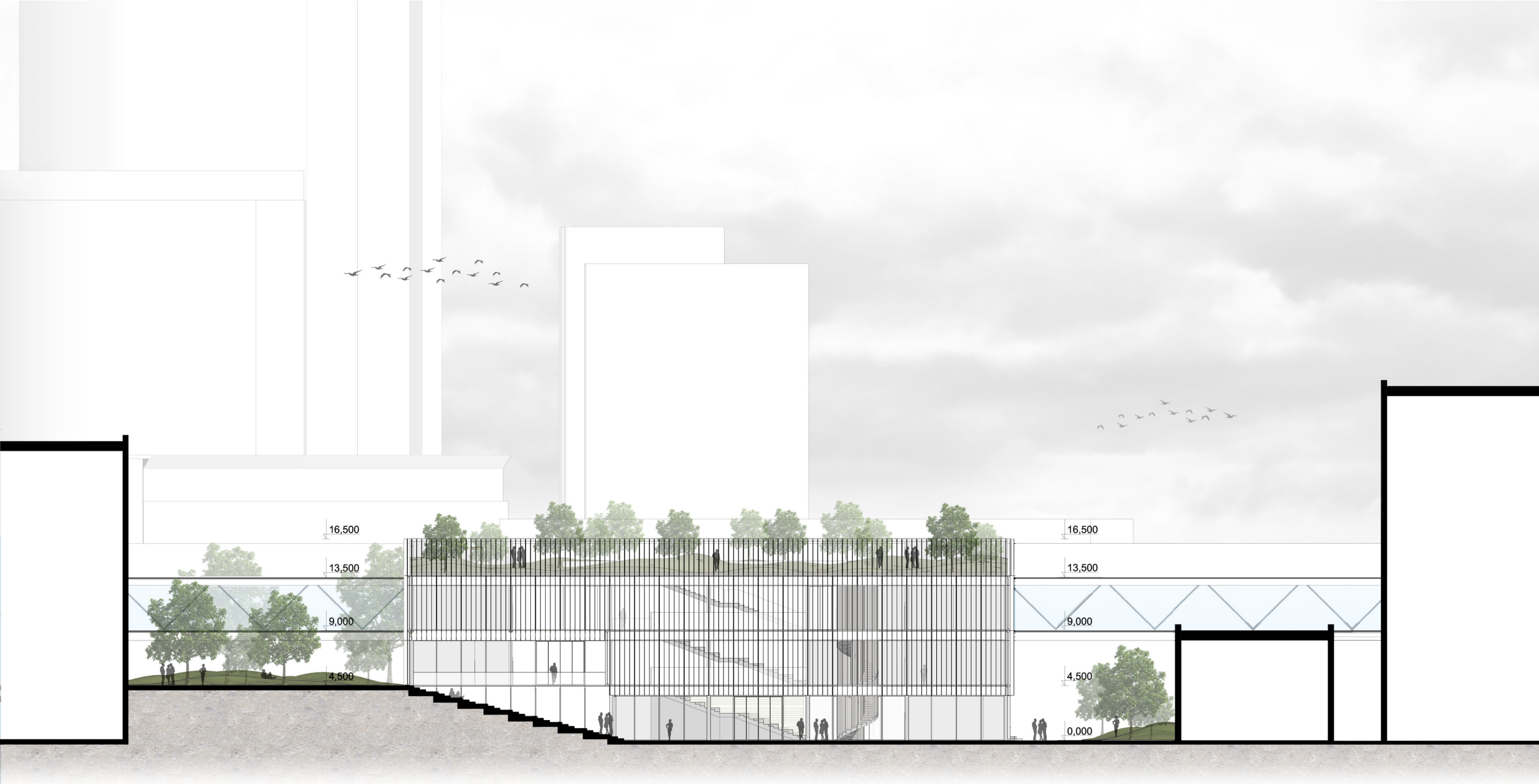


SECTION A-A' M 1:300



SECTION B-B' M 1:300

0m 2 5 10



SOUTHWEST VIEW

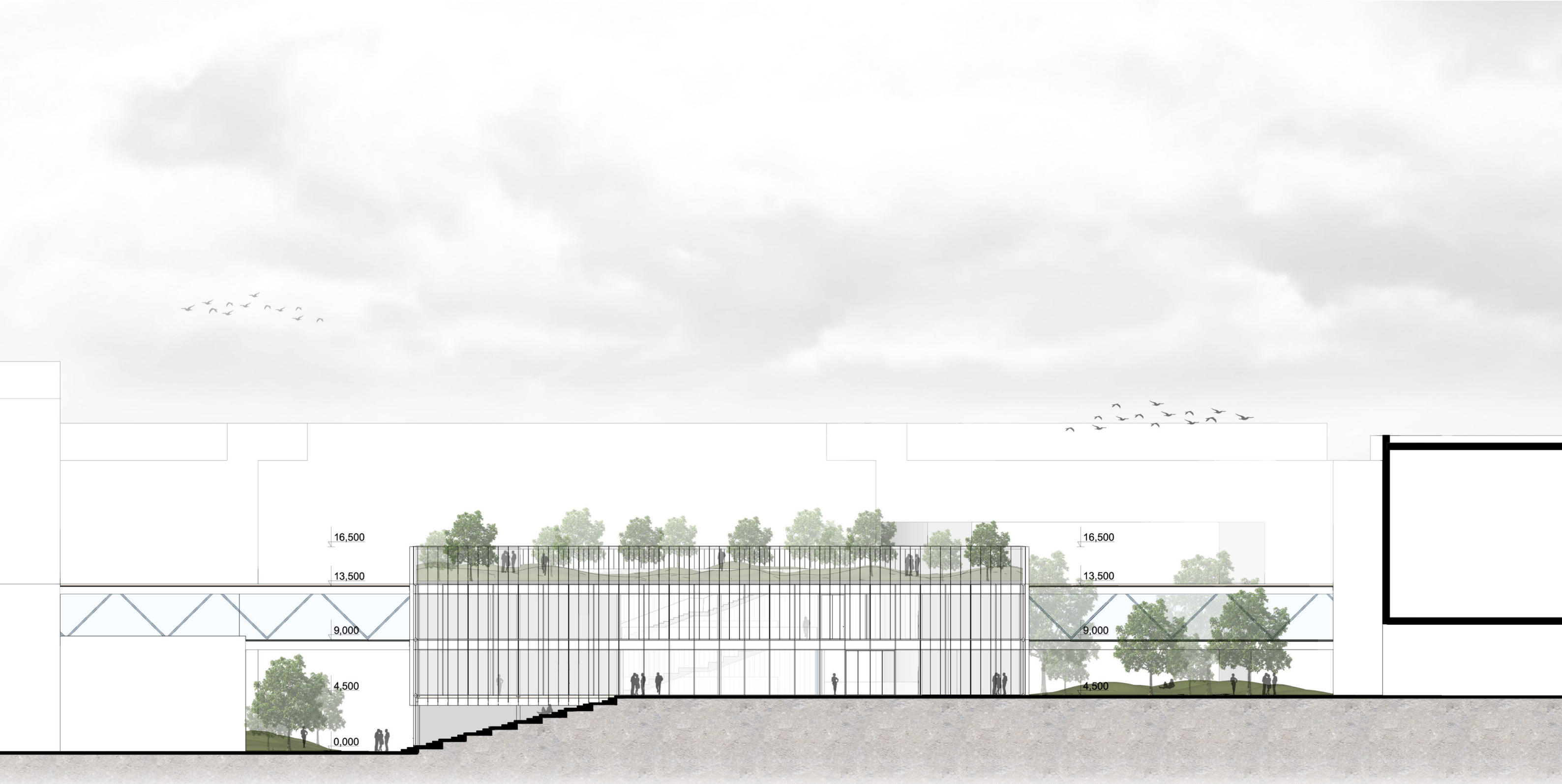


16,500
13,500
9,000
4,500
0,000

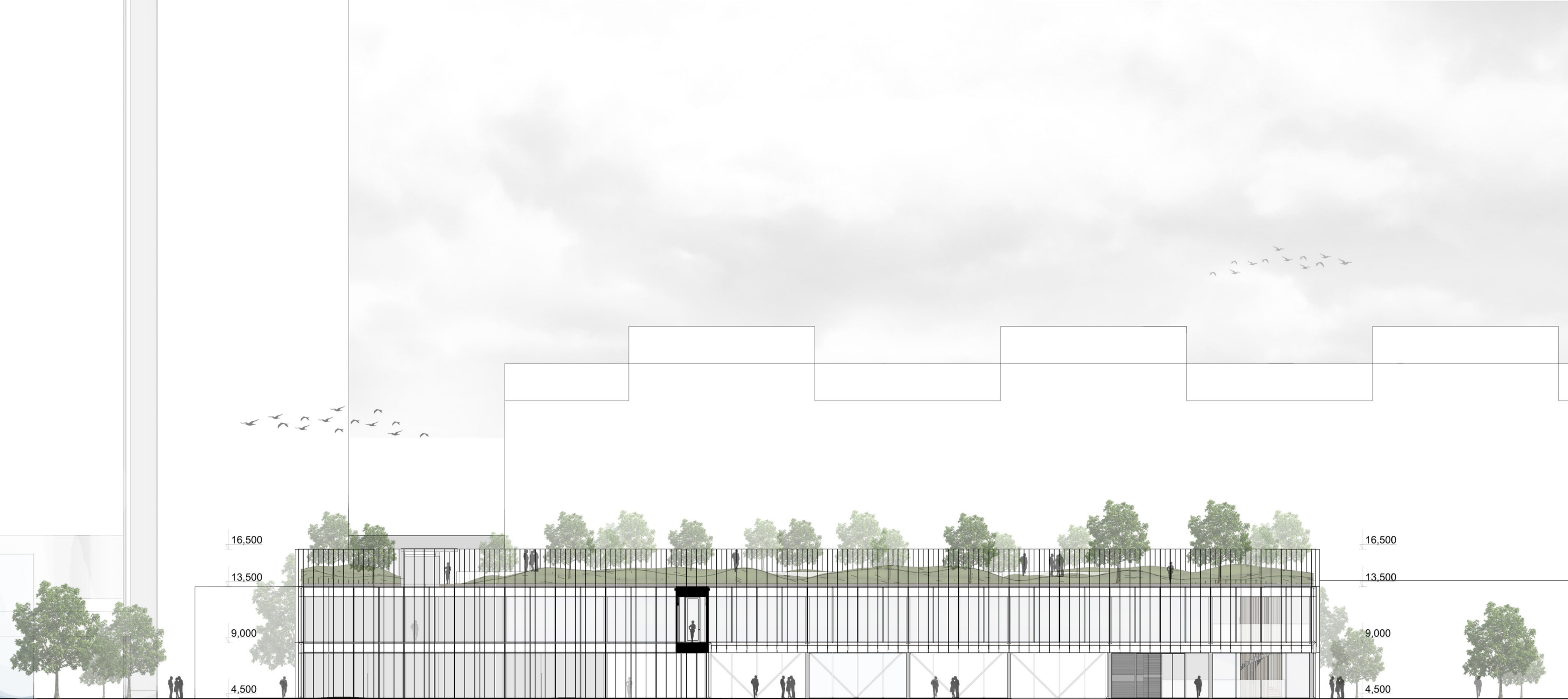
16,500
13,500
9,000
4,500
0,000

SOUTHEAST VIEW

0m 2 5 10



NORTHEAST VIEW



NORTHWEST VIEW