

- STUDENT ARCHITECTURAL COMPETITION -  
STU CAMPUS INNOVATION CENTER  
ARCHITECTURAL PROJECT WORKSHOP VII - COMBES  
GARCIA PEREZ, B. N. - GRAU, M. - OCAMPO, L.



**INDEX**

# INDEX

<b>THE PLACE</b>	<b>03</b>
<b>REQUIRED PROGRAM</b>	<b>15</b>
RESEARCH ON ALTERNATIVES	17
<b>THE TERRAIN</b>	<b>21</b>
RESEARCH ON ALTERNATIVES	23
<b>CONCEPT</b>	<b>27</b>
<b>VOLUMETRY</b>	<b>35</b>
<b>PLANIMETRY</b>	<b>38</b>
<b>VIRTUAL MODEL</b>	<b>47</b>
<b>GALLERY</b>	<b>53</b>



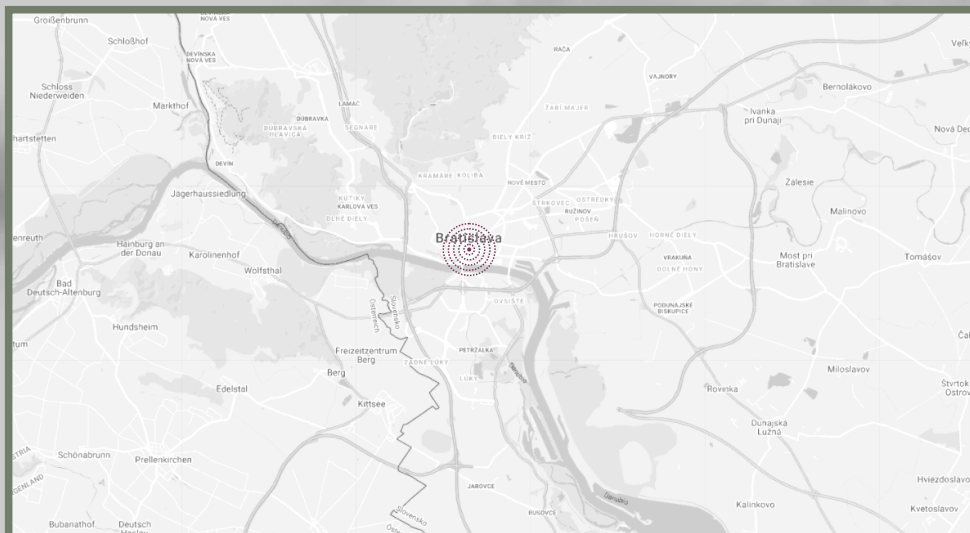
**THE PLACE**

# LOCATION



LOCATION ON THE EUROPEAN CONTINENT

SLOVAKIA



LOCATION IN THE COUNTRY

BRATISLAVA

# GEOGRAPHY

## SEISMIC RISK

AGR = 0.63 M/S<sup>2</sup>

MERCALI SCALE: GRADE V

PERCEPTION: MODERATE

POTENTIAL FOR HARM:  
VERY WEEK

## WIND

FUNDAMENTAL VALUE OF  
BASIC WIND SPEED:  
VB,0 = 26.0 M/S

BASIC WIND SPEED PRESSURE:  
QB = 0.42 KN/M<sup>2</sup>

## TEMPERATURE

TEMPERED ZONE

CONTINENTAL WEATHER

TEMP MÁX. : 39.3°C

TEMP MÍN. : 24.6°C

## TOPOGRAPHY

REGULAR

HEIGHT: 156 MSNM  
VARIES IN RADIUS OF 1  
KM: ±5 MSNM

VULNERABLE TO FLOODS

## RAINFALL

ANNUAL TOTAL: 565MM

CHARACTERISTIC VALUE OF  
SNOW LOAD:  
SK = 0.73 KN/M<sup>2</sup>

## SUNLIGHT

SUN AZIMUTH: 274.00°

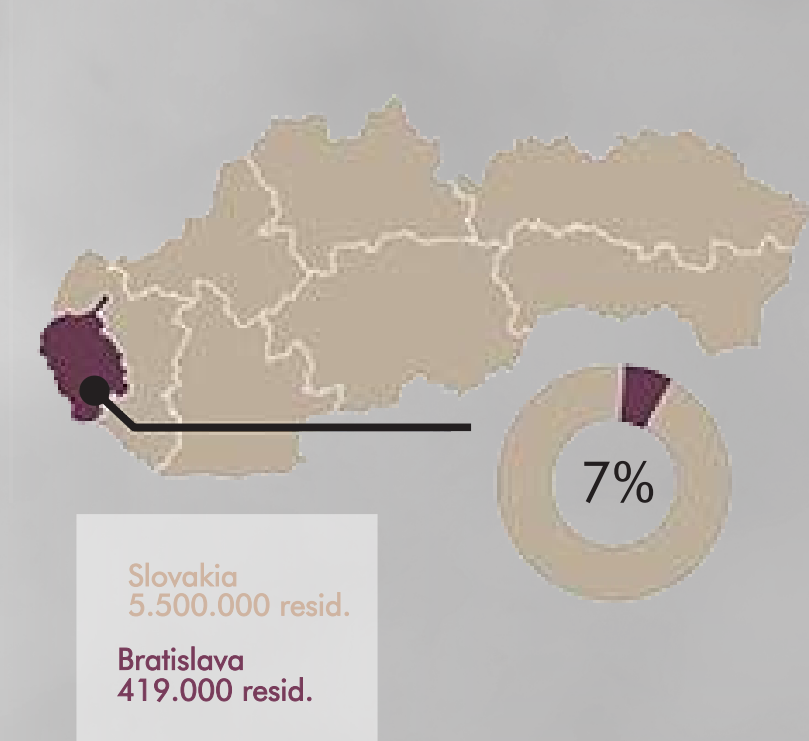
SUN HEIGHT: -0.21°

SUNRISE: -100° 47' 01"

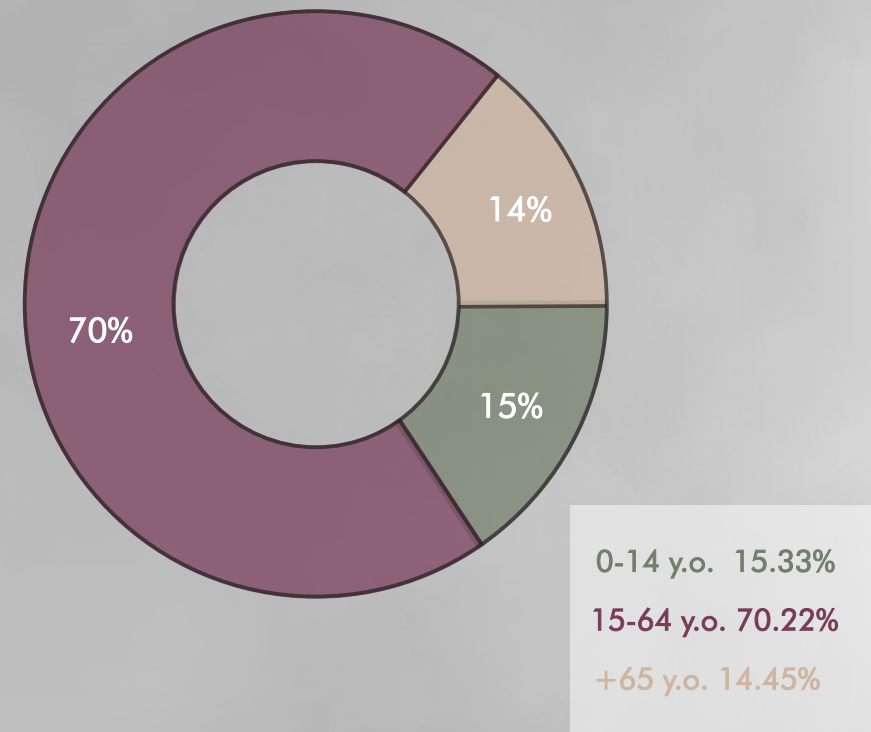
SUNSET: +100° 32' 01"

## POPULATION DATA

### POPULATION AMOUNT



### POPULATION AGE STRUCTURE



THE **POPULATION** OF BRATISLAVA IS AMONG 419,000 RESIDENTS AND REPRESENTS 7% OF THE TOTAL POPULATION OF SLOVAKIA (5,500,000). THE FOLLOWING CHARACTERISTICS ARE TYPICAL OF THE **CURRENT DEMOGRAPHIC TREND**: PERSISTENTLY DECLINING CRUDE BIRTH RATE; MORTALITY STAGNATION; INCREASED LIFE EXPECTANCY; CHANGES IN AGE STRUCTURE; GROWTH GROUP OF VERY OLD PEOPLE; FEMINIZATION OF AGEING CHANGES IN DEMOGRAPHIC INDICES.

## DAPOPULATION DATA

## CURRENT DEMOGRAPHIC TREND: AGING POPULATION



THE AGEING OF THE POPULATION IS A GLOBAL PROCESS MARKED MAINLY IN DEVELOPED COUNTRIES, ESPECIALLY IN EUROPE. THE SPECIFIC SITUATION OF SLOVAKIA IS THAT AS A RESULT OF A VERY INTENSE POPULATION AGEING, IN 40 YEARS IT WILL BECOME ONE OF THE MOST AGEING COUNTRIES IN EUROPE.

IN RECENT YEARS, IT HAS SHOWN A PERSISTENT DECLINE IN THE BIRTH RATE AND A STAGNATION IN MORTALITY; ITS RATES ARE MEASURED FOR A SPECIFIC GEOGRAPHICAL AREA, FOR A GIVEN YEAR AND PER 1,000 INHABITANTS. IT IS WORTH MENTIONING THAT IN SLOVAKIA THERE IS A FEMINIZATION OF AGEING IN PARALLEL TO A PHENOMENON OF "OVER-MORTALITY" OF MEN. ALSO AN INCREASE IN LIFE EXPECTANCY, WHICH ACCORDING TO 2015 DATA IS 73.03 FOR MEN AND 79.73 FOR WOMEN.

## THE CITY

O  
B  
J  
E  
C  
T

INNOVATION CENTER

TO THE CITY  
TO THE RESIDENTS

OPENING OF THE AREA AND THE CONNECTION WITH THE MAIN PUBLIC SPACES OF THE CITY.

PROJECT LOCATION: BRATISLAVA CENTRE

### CHARACTERISTICS

LOCATED IN CENTRAL EUROPE AND IN SOUTH-WESTERN SLOVAKIA

BORDERED BY AUSTRIA AND HUNGARY

SITUATED ON BOTH SIDES OF THE RIVER DANUBE

POLITICAL, ECONOMIC, FINANCIAL AND CULTURAL CENTRE

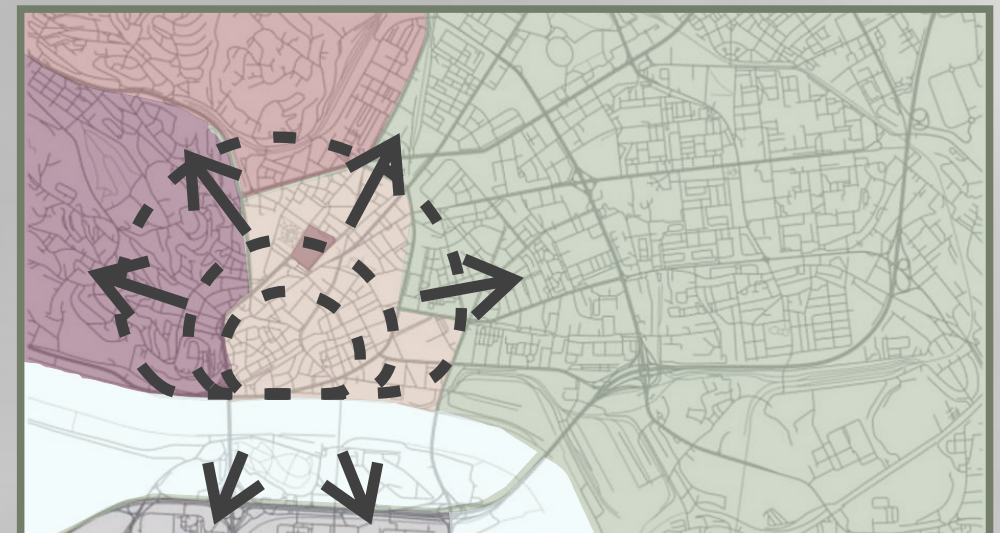
SEMI RADIOCENTRIC GROWING

SEAT OF THE SLOVAK PARLIAMENT, PRESIDENCY, MINISTRIES, SUPREME COURT, AND CENTRAL BANK

WITH GREAT ARTISTIC, CULTURAL AND EDUCATIONAL OFFER



- JURISDICTIONAL AVENUES
- ROUTES
- MAIN STREETS
- RIVER DANUBE
- RAILWAY ROUTE



- CITY GROWTH
- COMMERCIAL, EDUCATIONAL AND ADM.
- LOW-DENSITY RESIDENCES
- LOW AND MEDIUM-DENSITY RESIDENCES
- MEDIUM AND HIGH-DENSITY RESIDENCES
- COLLECTIVE RESIDENCES

## URBAN LIFE

### STRENGTHS

- Strategic location with respect to other countries.
- Historic center well preserved.
- Good system of transport.
- Free trains for students and retirees.
- It has many activities because it is the capital and they are all accessible because of its small size. It is welcoming, it is not chaotic.
- Natural Spaces nearby, forest less than 10min.

### WEAKNESSES

- Its landlocked
- Outside the historic center is unsafe..
- Having access to a home is difficult, there is a lot of demand and little supply so it increases its price.
- Extreme temperatures.
- Anochece muy temprano en invierno por lo que se reduce el movimiento.
- Bad driving, danger to pedestrians.

## INTERVIEW

**NICKO SELIGMAN:** Native living in Costa Rica(...) "I used to think of the city as ugly and unattractive until 2010, but many things have improved, all my friends and family who visit me from abroad like it very much. I believe that much of this improvement comes from the younger generations returning to the capital after years of living abroad and implementing the ideas and dreams they gained abroad. I think around 2023-25 the city will be very liveable and very competitive. It has great potential, some of it, unfortunately, has not yet been discovered or used to its full extent, but I hope that will change soon. I think the city is small, welcoming and very familiar. It combines the best of metropolises and a small town where local communities thrive. Bratislava has many interesting events such as "Dobry trh" (outdoor neighborhood market) and many outstanding events and music festivals. In general, it is a very pleasant city to live in. It is not cheap, but with a normal job it is quite easy to lead a decent life" (...).

## URBAN MORPHOLOGY

URBAN STRUCTURE: MIXED  
URBAN TYPOLOGY: IN WEFT

### GENERAL ENVIRONMENT

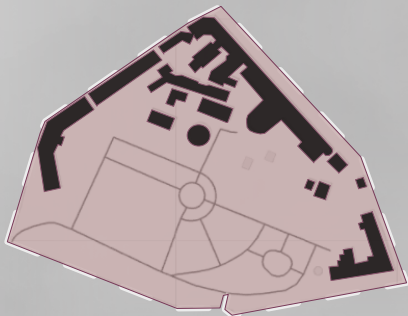
HOMOGENEOUS LANDSCAPE AND  
DENSE CONSTANT HEIGHTS (≈20m)



DIFFERENCE WITH THE REST OF THE NEIGHBORHOOD  
DUE TO THE INSTITUTIONAL FUNCTIONS NEARBY

PRESENCE OF TWO TYPES OF GREEN SPACES

### EMPTY OPEN AREAS



MOVEMENT AND ACTIVITY  
THE COLLECTIVE AND THE PUBLIC

### IMMEDIATE ENVIRONMENT

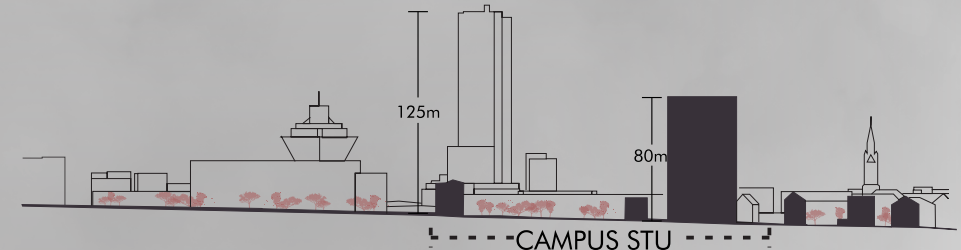
HETEROGENEOUS AND CONTRASTED PROFILE  
SQUARES(≈0m) - SKYSCRAPER (≈125m)



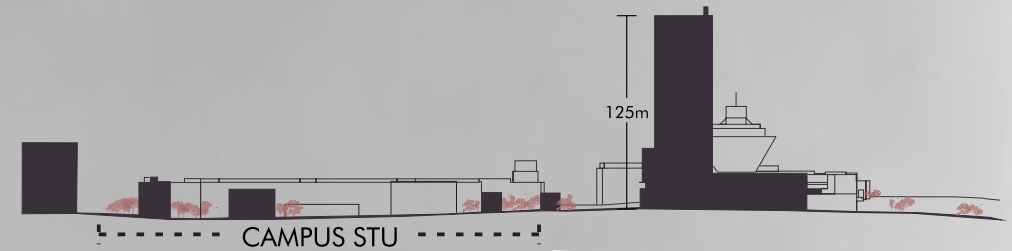
### EMPTY CLOSED AREAS



PROTECTION AND PRIVACY  
THE INDIVIDUAL AND THE PRIVATE



URBAN PROFILE NORTHWEST - SOUTHEAST



PERFIL SUDOESTE - NORESTE



CAMPUS STU - NOLLI MAP

# THE ENVIRONMENT

## SERVICES

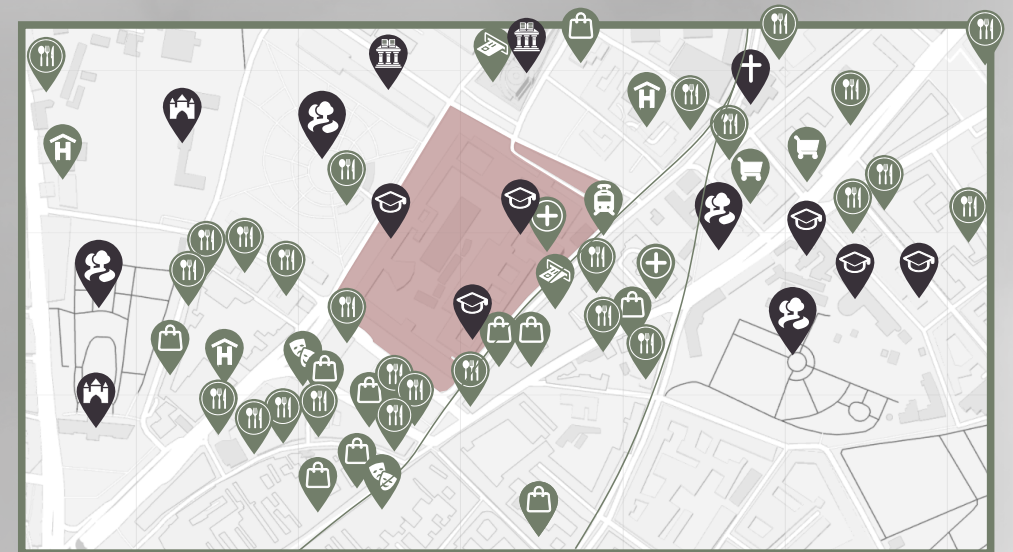
THE STU CAMPUS HAS ALL KINDS OF SERVICES AT ITS DISPOSAL (INFRASTRUCTURE, TRANSPORTATION, LEISURE AND CULTURE, FINANCIAL, CONSUMER AND EDUCATIONAL) INFLUENCED BY ITS LOCATION AND ITS PROXIMITY TO VENUES SUCH AS THE ARCHBISHOP'S SUMMER PALACE, THE SEAT OF GOVERNMENT ; AND THE GRASSALKOVICH PALACE, RESIDENCE OF THE PRESIDENT.



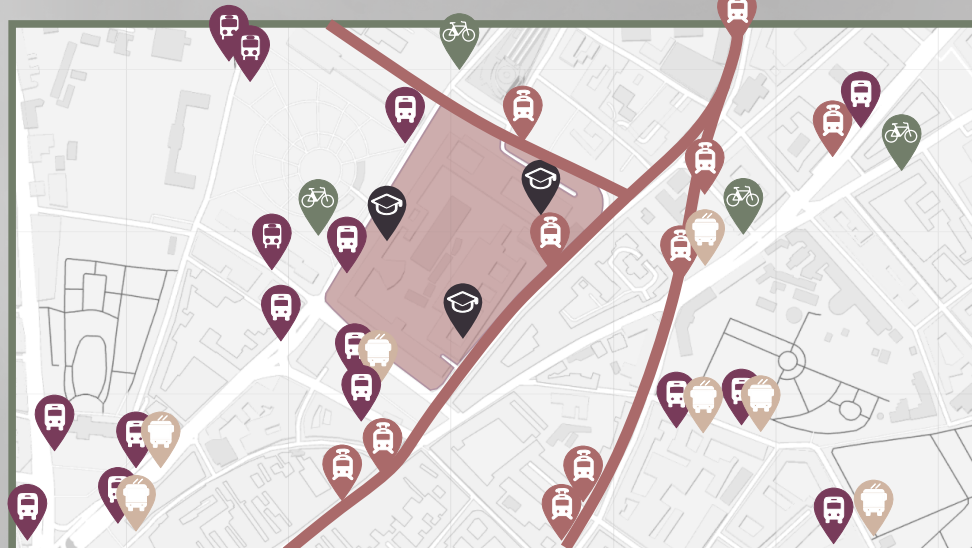
MEDICAL GARDEN. A 350M TO SOUTHEAST



LIBERTY SQUARE A 200M TO NORWEST







CAMPUS STU  
CATERING AND RECREATION SERVICES WITHIN A RADIUS OF 400M



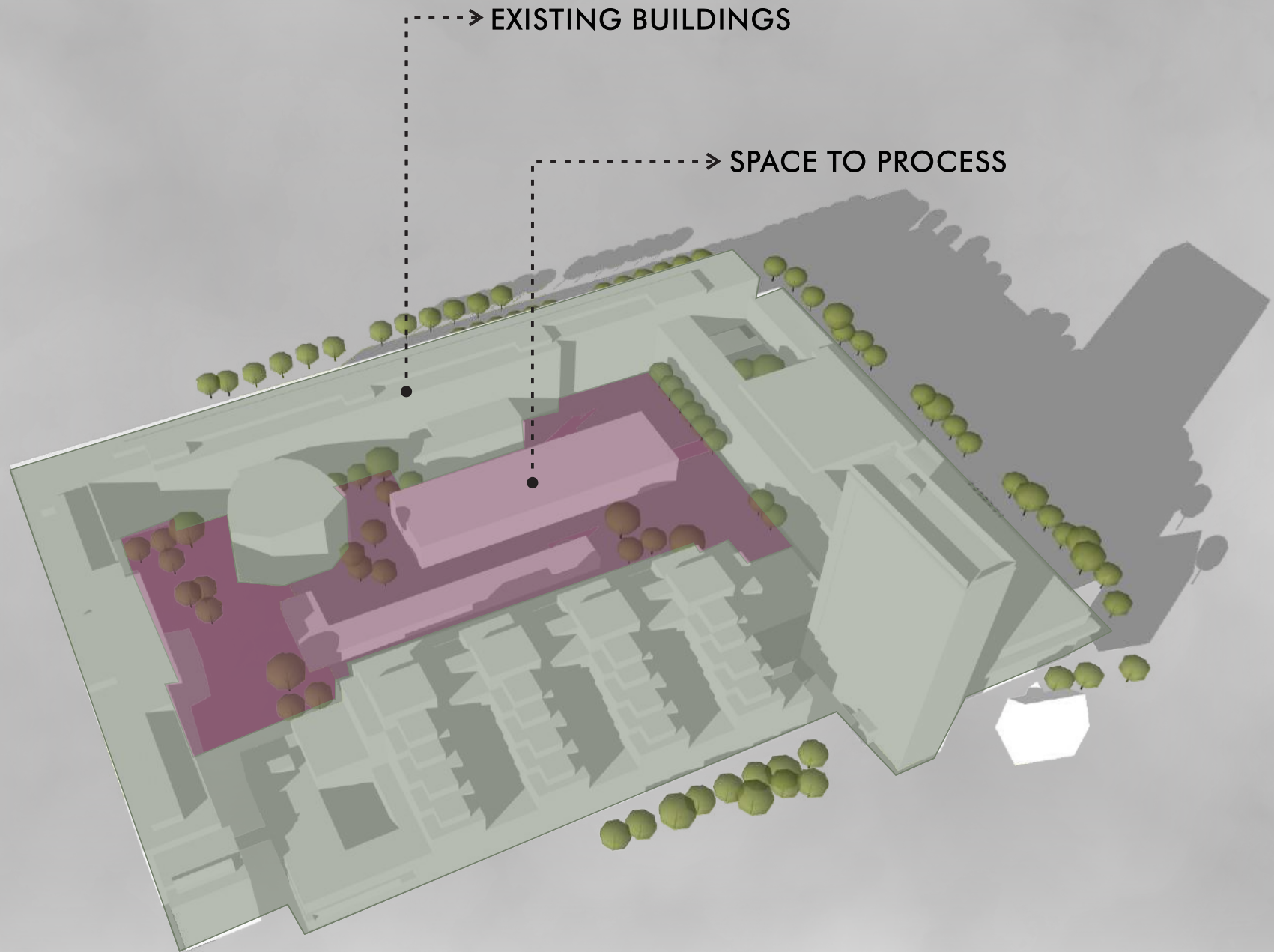
CAMPUS STU  
PUBLIC TRANSPORT

## PUBLIC TRANSPORT

IT IS CHARACTERIZED BY BEING ECONOMIC, OF AN ALMOST TOTAL SCOPE, PUNCTUAL AND UPDATED. IT HAS:

-  **BUS** 66 DAY AND 20 NIGHT LINES COVER ALMOST THE ENTIRE CITY
-  **TRAMWAY** 13 LINES
-  **TROLLEYBUS** SYSTEM COMPLEMENT, 14 LINES
- INTEGRATED TRANSPORT SYSTEM** ADDITIONAL SHUTTLE SERVICE LINKING TRAIN AND BUS ROUTES
-  **BICYCLE STANDS** SHARED BIKE SERVICE WITH HIS OWN PHONE APP

# TYOLOGY ANALYSIS



# INNOVATION CENTER

ARE PHYSICAL NUCLEI THAT HELP TO INTEGRATE ALL ACTORS INVOLVED IN SCIENCE, INNOVATION AND TECHNOLOGY AND ALLOW THE PROCESSES OF EXPERIMENTAL DEVELOPMENT AND NEW TECHNOLOGIES TO BE MORE EFFICIENT

O  
B  
J  
E  
C  
T

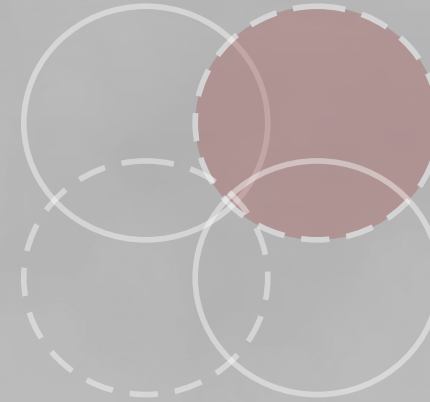
INNOVATION CENTER { TO THE CITY  
TO THE RESIDENTS  
OPENING OF THE AREA AND THE CONNECTION WITH THE MAIN PUBLIC SPACES OF THE CITY.



## INNOVATION CENTER



THE OBJECTIVE IS TO CREATE THE CONDITIONS FOR THE COOPERATION OF PROFESSIONALS AND THE ACADEMIC ENVIRONMENT AND TO SERVE AS AN IMPORTANT SPACE OF THE CITY FOR COMMUNICATION WITH THE PUBLIC.



CAMPUS STU IN SLOVAKIA

WHY ITS NECESSARY?

WHERE ITS NECESSARY?



IT MUST INCLUDE THE STU CENTRE FOR SCIENTIFIC INNOVATION, EDUCATIONAL, SOCIAL, MULTI-PURPOSE AND LEISURE SPACES SUCH AS INTERIORS, EXTERIORS, PART OF THE RECTORY AND WORKPLACES. MUST BE CONNECTED TO THE MAIN PUBLIC SPACES OF THE CITY



FOR STUDENTS, TEACHERS, RESEARCHERS AND EMPLOYEES OF THE STU, EXPERTS IN THE PROFESSION, MUNICIPAL AUTHORITIES AND PUBLIC AUTHORITIES.

WHAT ITS NECESSARY?

FOR WHOM ITS NECESSARY?



WHAT IS NECESSARY?  
FOR WHOM IS NECESSARY?

USER	ACTIVITY	REQUIREMENTS	ARCHITECTURAL SPACES
GENERAL PUBLIC	RECREATION, ATTENDING TO EVENTS.	ENJOY HIGH QUALITY PUBLIC SPACES	PARKING WITH STREET FURNITURE, SPACES FOR EVENTS
MUNICIPAL AUTHORITIES	ATTENDING TO EVENTS.	PERFORM THEIR POLITICAL FUNCTIONS.	EVENT ROOMS
STUDENTS	TAKING LESSONS	HAVE COMFORTABLE AND FUNCTIONAL SPACES TO STUDY.	EDUCATIONAL SPACES, WORKSHOPS. INTERIOR AND EXTERIOR.
TEACHERS/ RESEARCHERS	TEACHING/ INVESTIGATING	HAVE COMFORTABLE AND FUNCTIONAL SPACES TO CARRY OUT YOUR WORK	EDUCATIONAL SPACES, WORKSHOPS. INDOOR AND OUTDOOR. LABORATORIES, MEETING ROOM
EMPLOYEES	ADMINISTRATION, CLEANING AND SAFETY WORK.	HAVE COMFORTABLE AND FUNCTIONAL SPACES TO FULFILL THEIR WORK.	OFFICES, ACCESS HALL, STORAGE SPACES.
ALL THE USERS	-	-	PARKING, BAR AND RECREATIONAL SPACES.



**REQUIRED PROGRAM**

# REQUIRED PROGRAM

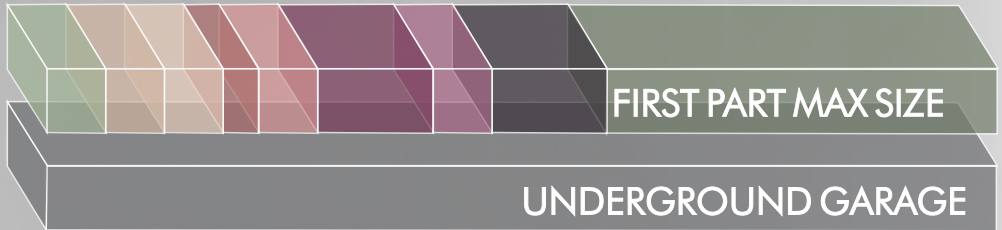
## SPACES

INNOVATIVE INTERDISCIPLINARY RESEARCH CENTER STU, STARTUP CENTER, COOPERATION WITH PRACTICE	4000
PRESENTATION (EXPERIENTIAL) CENTER OF SCIENCE AND RESEARCH	1000
ADMINISTRATIVE OFFICES OF THE RECTORATE IN CONNECTION TO RESEARCH	500
SOCIAL, EXHIBITION AND MULTIPURPOSE SPACES	1000
MEDIA LIBRARY, STUDY ROOMS	500
WORKSHOPS	300
INFO SERVICES, ENTRANCE AREA	500
CATERING, RESTAURANTS, CAFES	500
TECHNICAL BACKGROUND	500

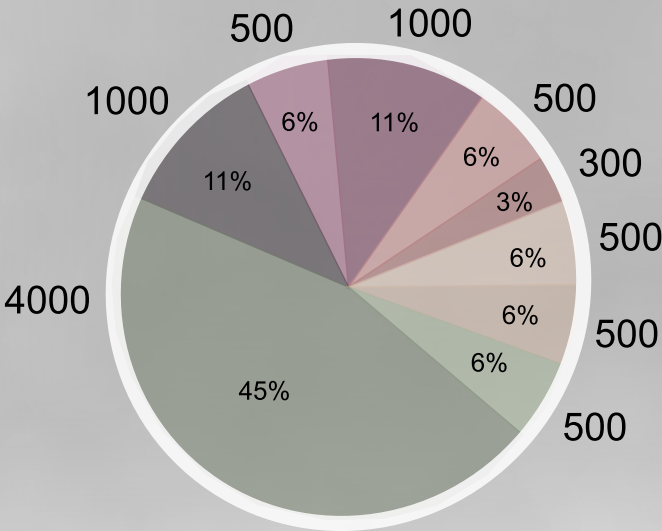
## TO ADD:

FIRST PART MAX SIZE	7500-10000
UNDERGROUND GARAGE (UNDER THE BUILDING AND PART OF THE YARD)(APPROX. 300 PLACES)	7500

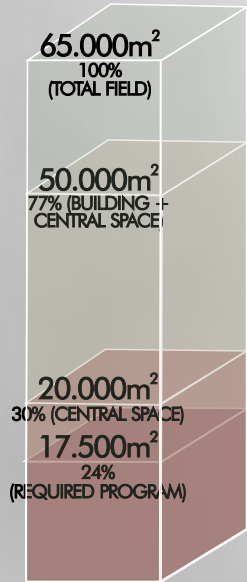
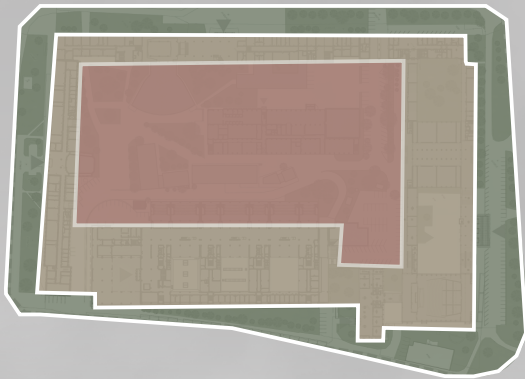
**TOTAL MAX SIZE** 15000-17500M<sup>2</sup>



**FIRST PART MAX SIZE** 7500-10000M<sup>2</sup>



## LAND AREAS RELATIONSHIP





# RESEARCH ON ALTERNATIVES

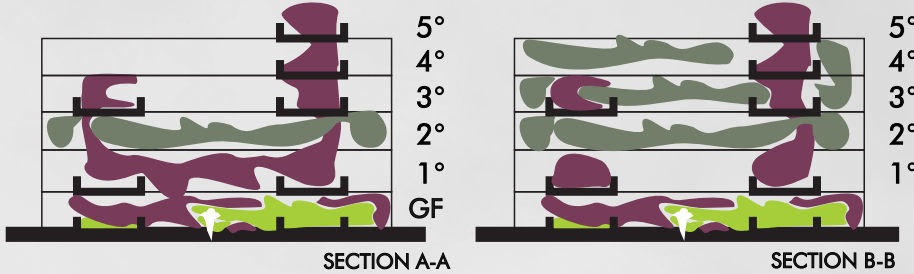
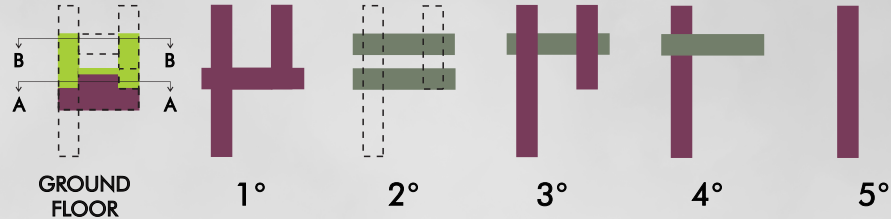
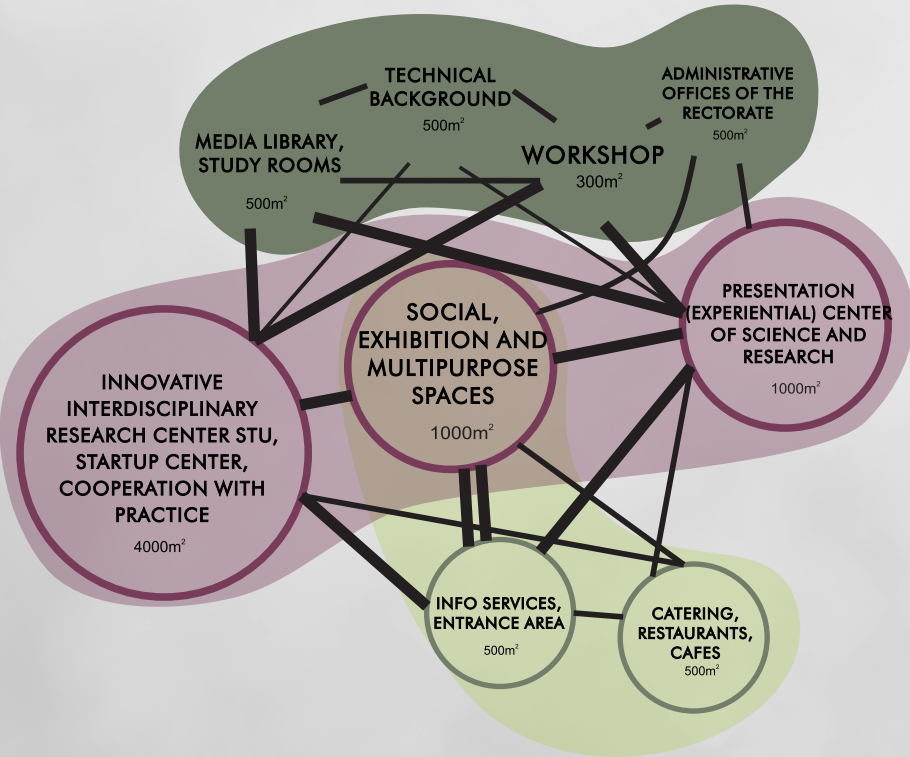
# REQUIRED PROGRAM RESEARCH ON ALTERNATIVES

## ALTERNATIVE 1

DOBLE GROUPING

- GROUPING OF SPACES ACCORDING TO TYPE
- GROUPING OF SPACES ACCORDING TO URBAN HIERARCHY

## BUBBLE GRAPHICS



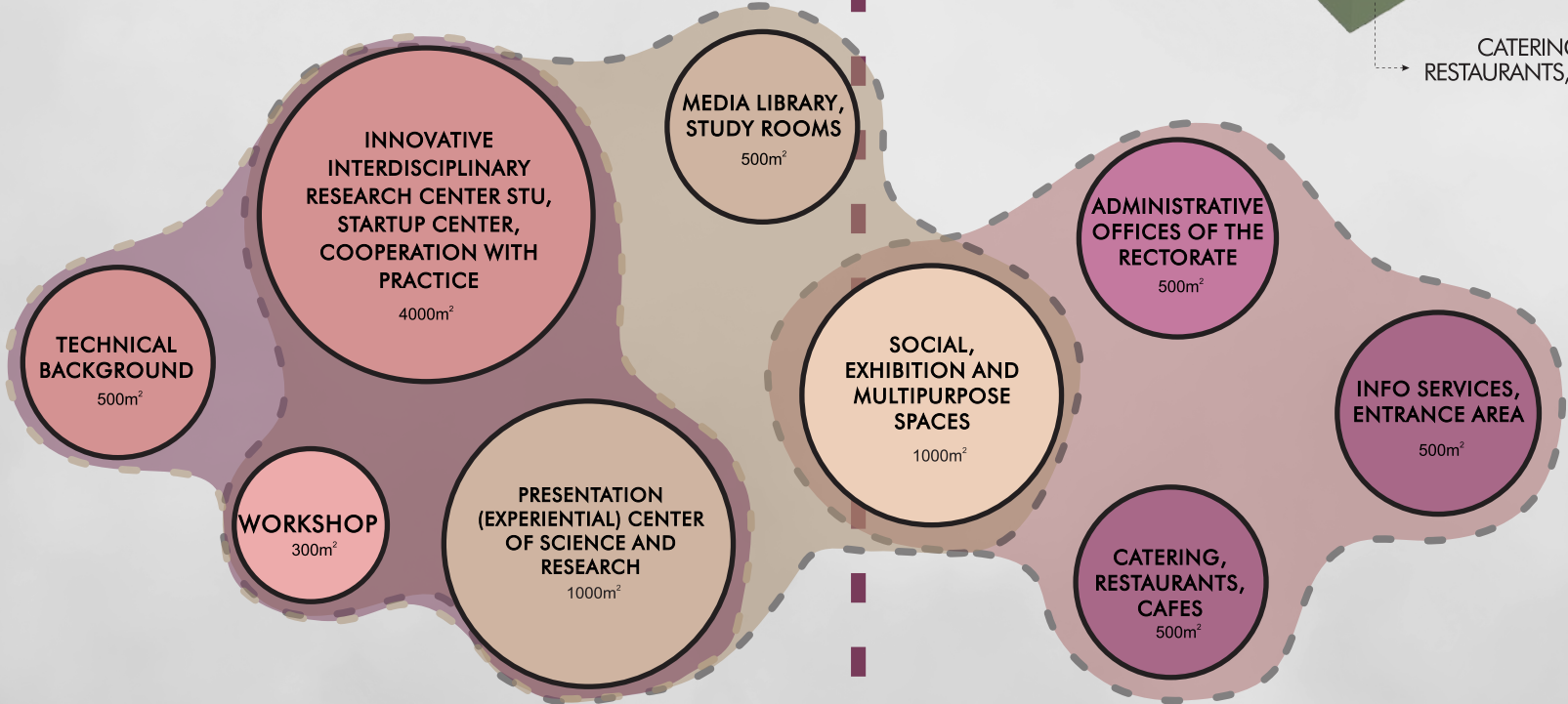
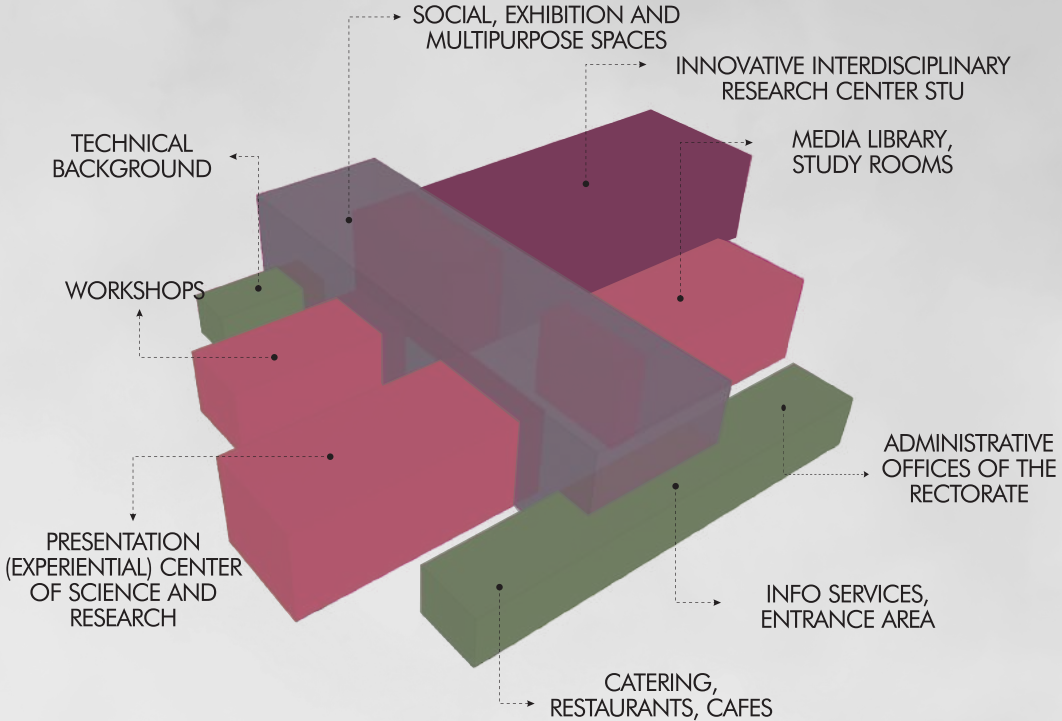
# REQUIRED PROGRAM RESEARCH ON ALTERNATIVES

## ALTERNATIVE 2

STUDY OF EACH SPACE AND ITS SOCIAL REQUIREMENTS, UNDERSTANDING THAT THESE CAN BE UNIFIED IN A LARGE FLEXIBLESPACE

LARGE CENTRAL COURTYARD AS THE MAIN LINK AND VOLUME HIERARCHY

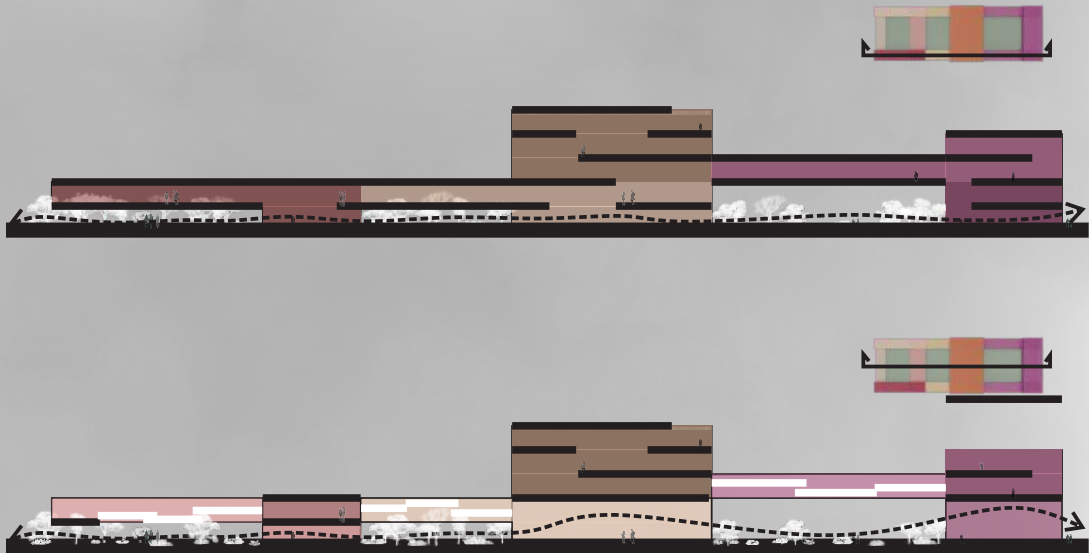
### BUBBLE GRAPHICS



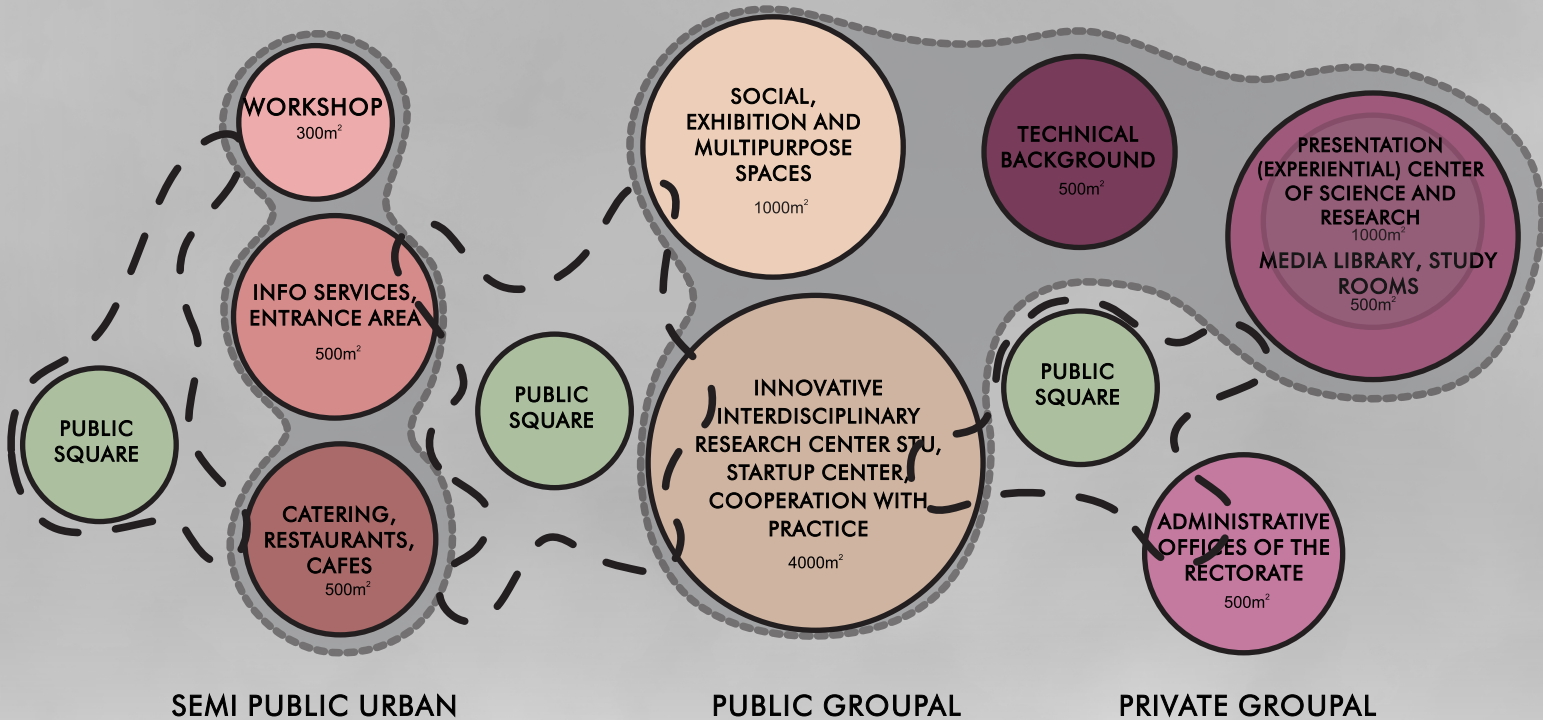
# REQUIRED PROGRAM RESEARCH ON ALTERNATIVES

## ALTERNATIVE 3

- |                   |                   |
|-------------------|-------------------|
| WIDTH AND OPENNES | INCREASED         |
| FLEXIBILITY       | CONTAINMENT       |
| RELAXATION        | FLEXIBILITY       |
| CONTINUITY        | WORK ENVIRONMENT  |
| NATURAL LIGHTING  | VISUAL CONTINUITY |
|                   | DIMMABLE LIGHTING |

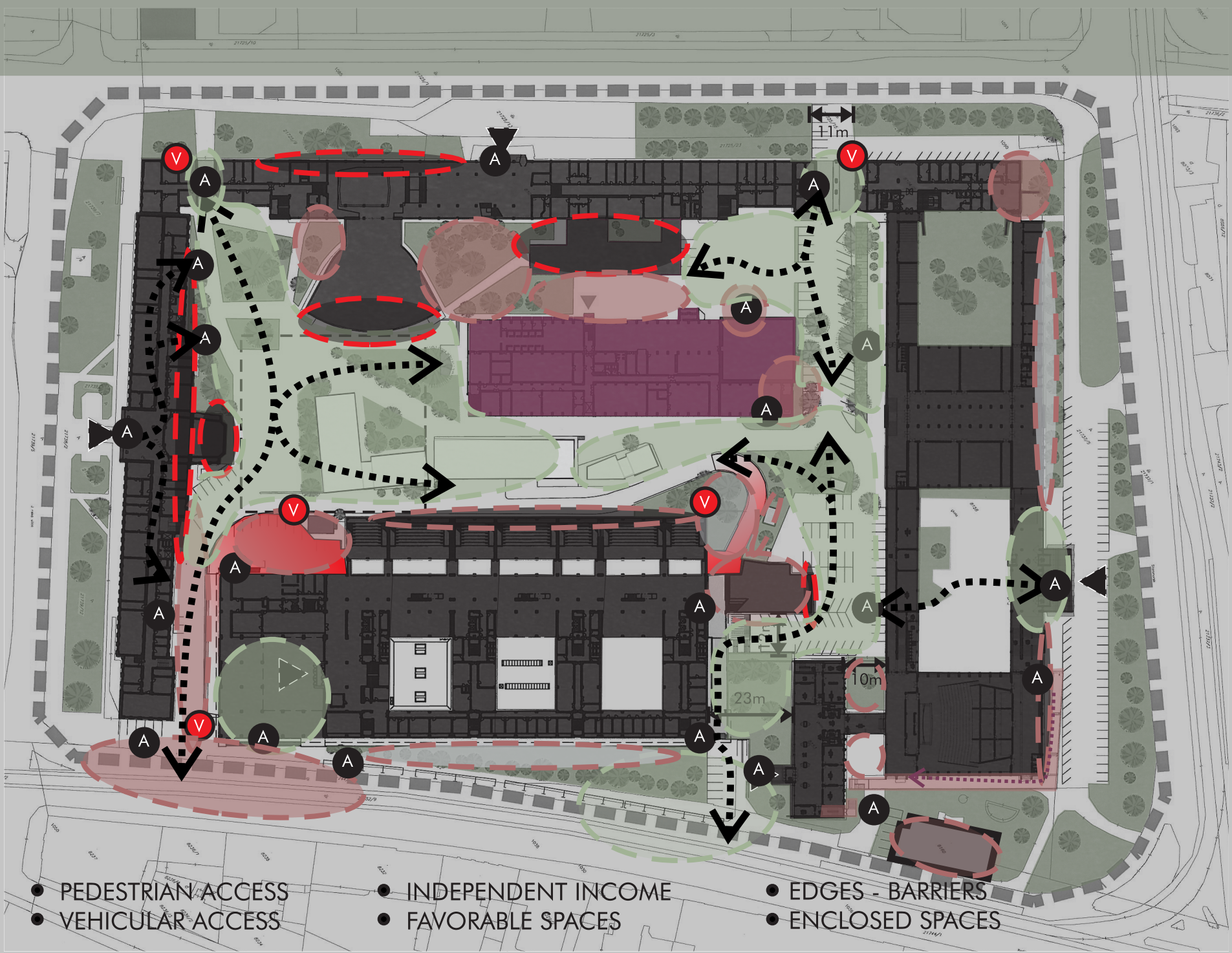


## BUBBLE GRAPHICS





**THE TERRAIN**



- PEDESTRIAN ACCESS
- VEHICULAR ACCESS

- INDEPENDENT INCOME
- FAVORABLE SPACES

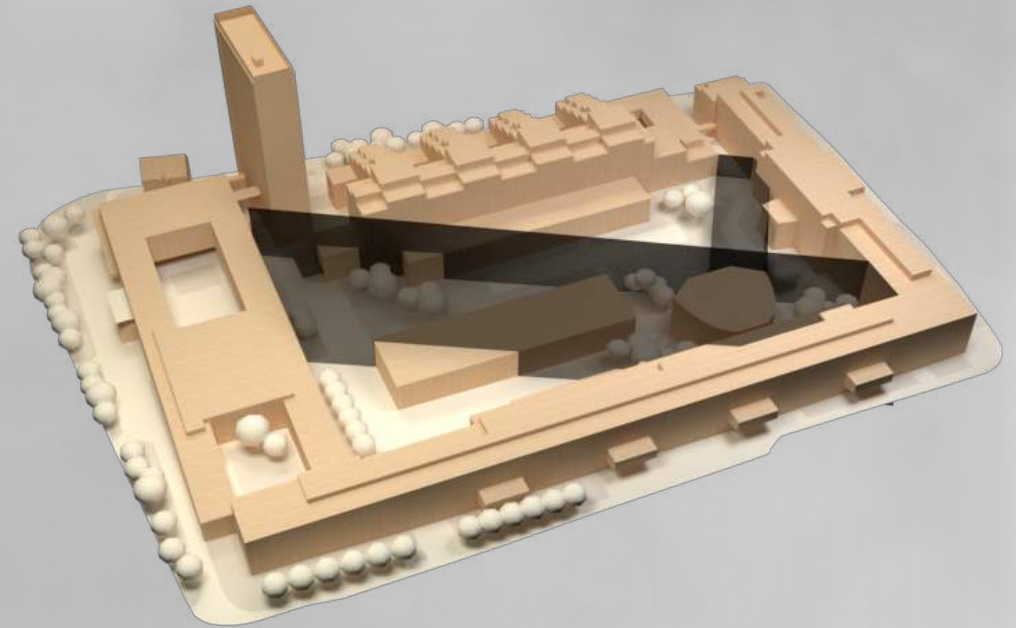
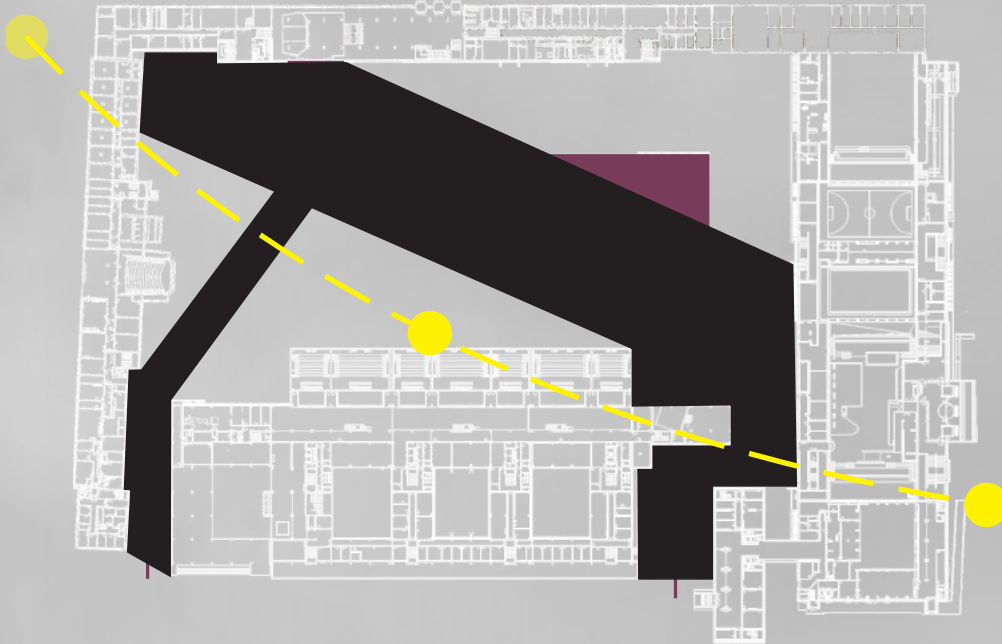
- EDGES - BARRIERS
- ENCLOSED SPACES



## RESEARCH ON ALTERNATIVES

# THE TERRAIN- RESEARCH ON ALTERNATIVES

## ALTERNATIVE 1



- LONGITUDINAL AXIS E - W

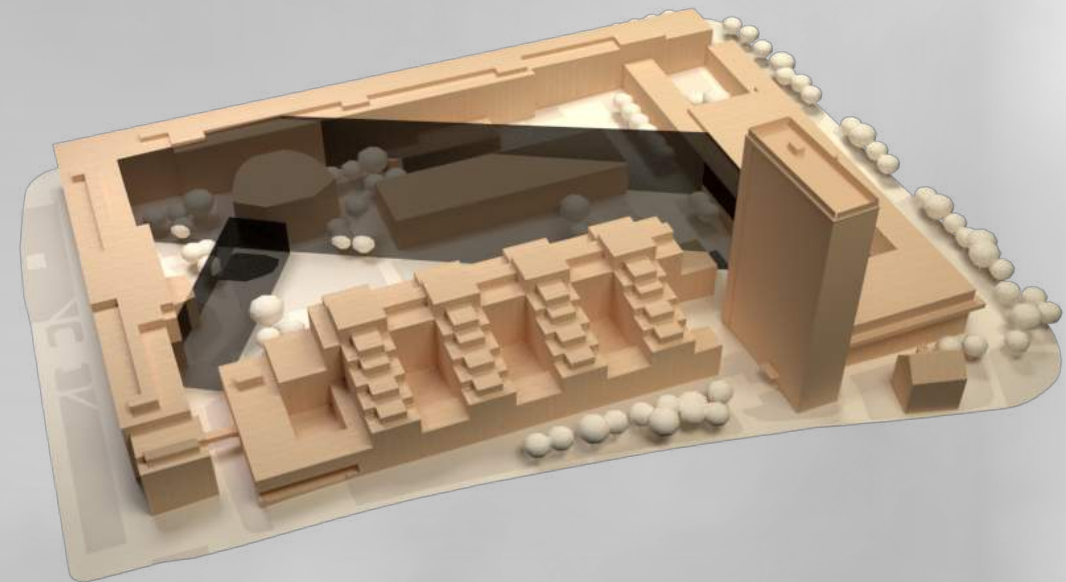
- LINK WITH ACCESSES, COVERED AND UNCOVERED

- LARGEST AREA FACING SOUTH

- SUSTAINABILITY

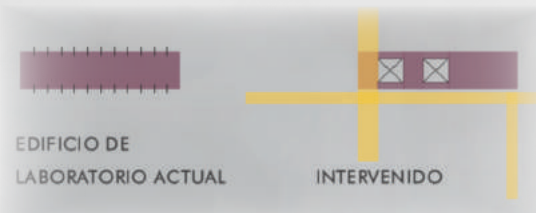
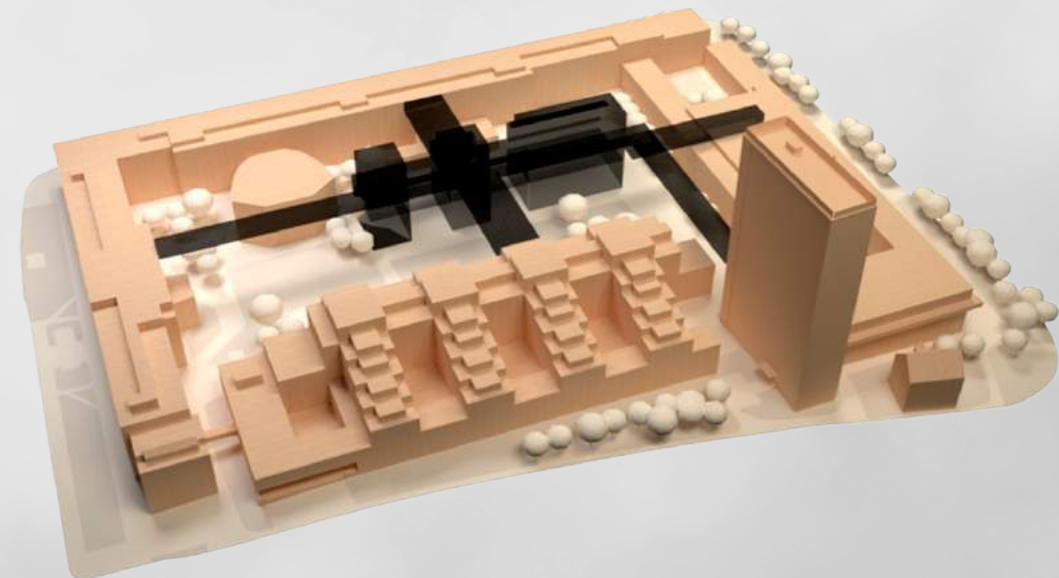
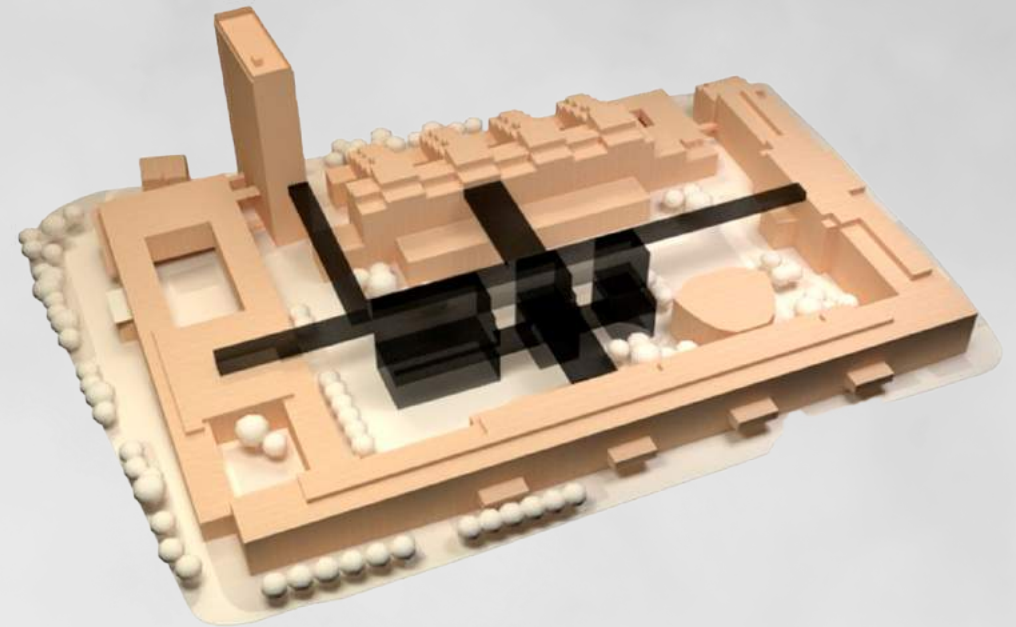
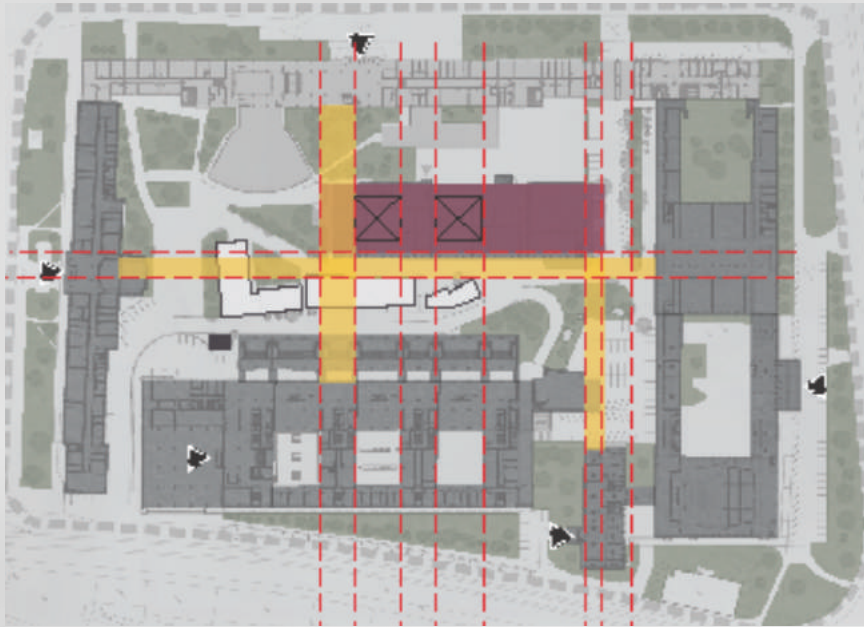
- GROUPING OF ISOLATED VOLUMES

- PROPORTION



# THE TERRAIN- RESEARCH ON ALTERNATIVES

## ALTERNATIVE 2

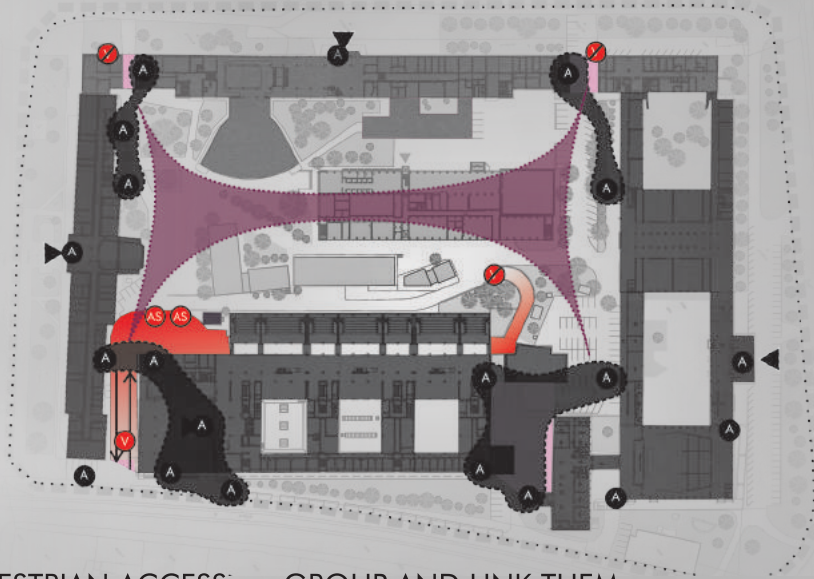


- NATURE RESPECT
- SUSTAINABILITY
- RESPECT
- MODULATION
- PORPORCIÓN
- BRIDGE
- PERMEABLE BASAMENT
- LIGHTNESS
- CONECTION

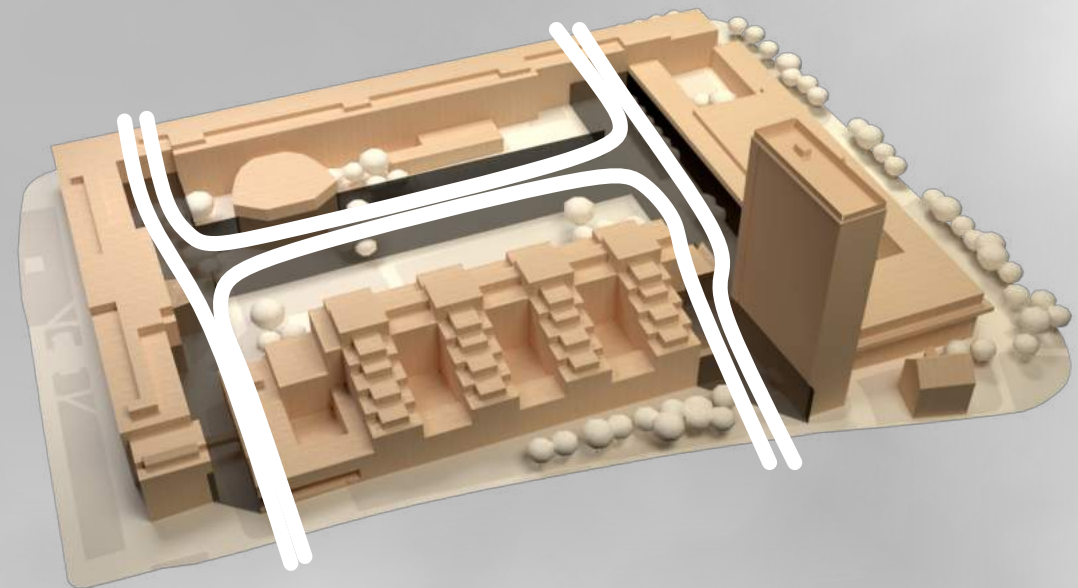
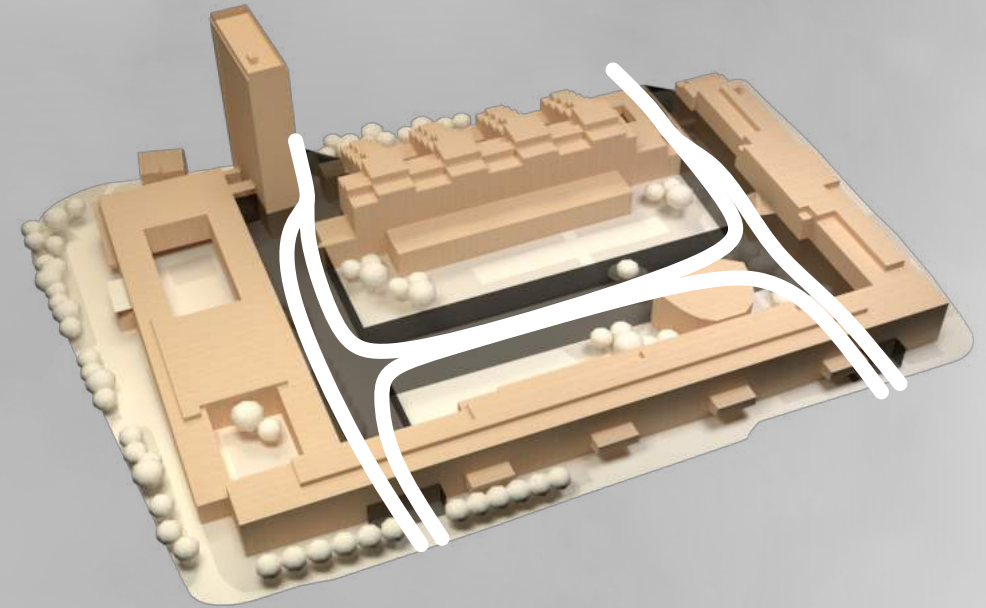
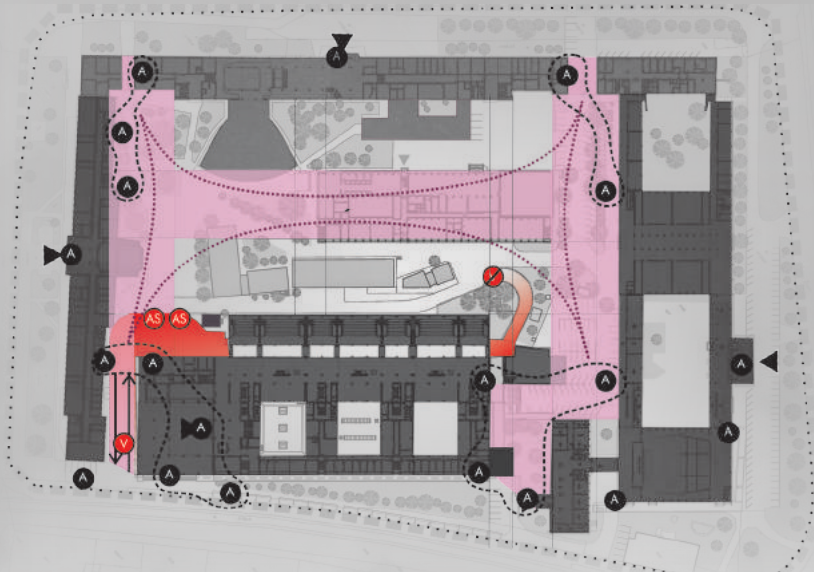


# THE TERRAIN- RESEARCH ON ALTERNATIVES

## ALTERNATIVE 3



- PEDESTRIAN ACCESS GROUP AND LINK THEM
- VEHICULAR ACCESS REDUCE THEM TO THE UNDERGROUND





**CONCEPT**

# CONCEPT

EVERY ARCHITECTURAL INTERVENTION MUST RESPECT THE ESSENCE OF THE CITIES WE INHABIT, BECAUSE **ARCHITECTURE AND THE CITY ARE EXTENSIONS OF THE SAME LANGUAGE**, THAT WHICH SPEAKS OF ITS IDENTITY.

IN OUR PROPOSAL, THE STU CAMPUS OPENS UP TO THE COMMUNITY AS A CONTAINER SPACE FOR ITS **LINKS AND DIVERSITIES**; AND IT DOES SO IN A SUBTLE WAY, **ADAPTING** TO ITS TERRAIN AND ENVIRONMENT, NOT TO CHANGE ITS ESSENCE, BUT TO EMPOWER IT.

LOCATED IN FRONT OF THE NÁMESTIE SLOBODY SQUARE, WE DECIDED TO MERGE INTO THIS SPACE OF SOCIAL RELATIONSHIP, EXTENDING IT AND TAKING ADVANTAGE OF THE **SPATIAL QUALITY** THAT THE **LAND** ITSELF PRESENTS US. WE GENERATE A **LARGE MULTIFUNCTIONAL COURTYARD** THAT NOURISHES AND LINKS THE FACULTIES OF THE STU.

THIS IS OUR **FOUNDATION FLOOR**, THE ONE WHERE THE BONDS THAT STRENGTHEN COMMUNITY AND IDENTITY FLOURISH AND ENDURE. IT IS THE **ARTICULATOR** OF THE SURROUNDING BUILDINGS, TRANSFORMING THE BARRIERS INTO **CONNECTING SPACES**.

LIKEWISE, WE REUSED THE **OLD STRUCTURE OF THE LABORATORY**, TURNING IT INTO A CENTER OF INNOVATION FROM WHICH GROW THE **FUNCTIONAL TRAYS** THAT ARE INTRODUCED INTO THE ENVIRONMENT, ACHIEVING A **SPATIAL SUTURE** BETWEEN THE NEW AND THE EXISTING.



## S U T U R I N G

### CONCEPT

#### DEFINITION:

SURGICAL INTERVENTION THAT IS DONE WITH THREADS OR OTHER MATERIALS TO ATTACH TISSUES OR ORGANS.

#### APPLIED TO ARCHITECTURE:

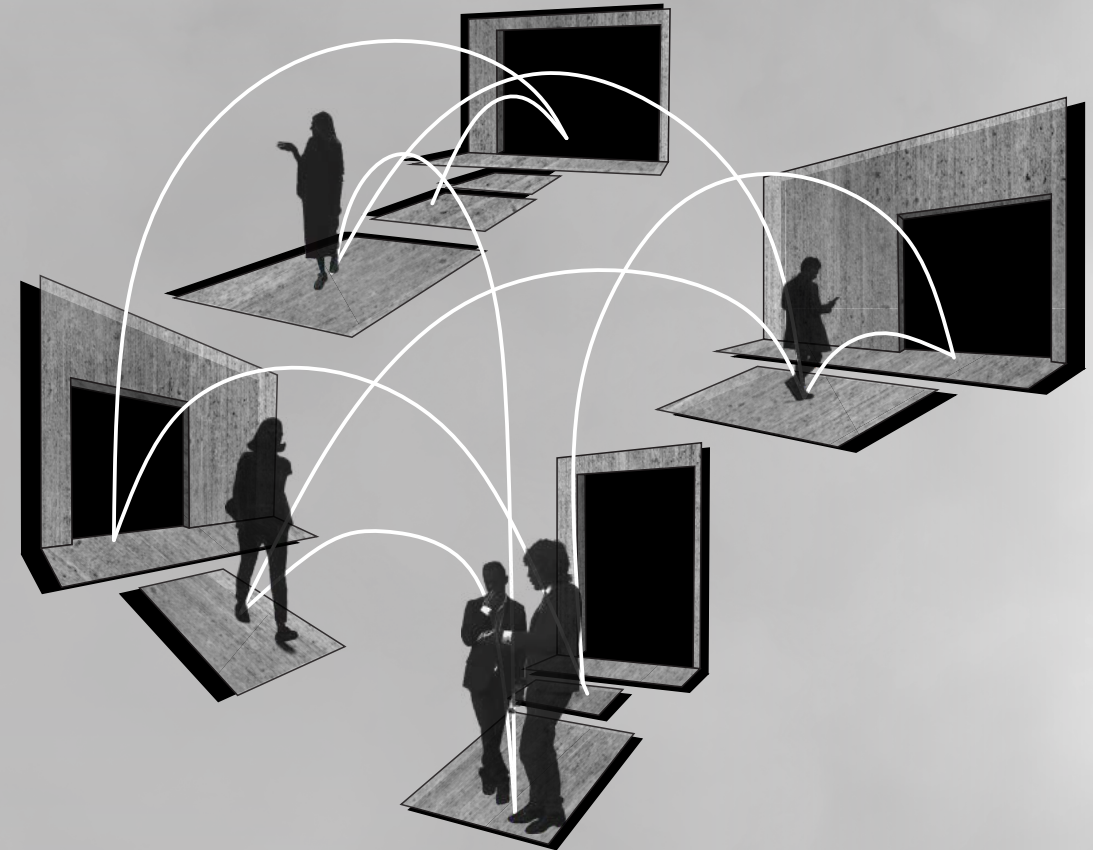
IT IS A SEAM WHOSE PURPOSE IS TO UNITE ALL THAT IS SEPARATE.

WE UNDERSTAND THIS PLACE TO INTERVENE AS A DISINTEGRATED SET OF:

- VARIOUS USERS
- VARIOUS ACTIVITIES
- VARIOUS SPACES
- VARIOUS BUILDINGS

FOR THIS INTERVENTION - AS FOR A SURGERY - WE NEED:

- HUMAN RESOURCES
- MATERIAL RESOURCES
- SPACE RESOURCES



THE USER MUST BE ABLE TO FIND WITH ENJOYMENT HIS OWN SPACE EVEN IN SUCH A DIVERSE CONTEXT

"ARCHITECTURE IS THE WISE LOCATION OF BOUNDARIES"  
- LEVINGSTON

## IRREDUCIBLE MINIMUM

### PROGRAM ALTERNATIVE 1

STRATIFICATION

VOLUME HIERARCHY ACCORDING TO ACTS

SPATIAL QUALITY

### PROGRAM ALTERNATIVE 2

FLEXIBILITY

VOLUME HIERARCHY ACCORDING TO ACTS

CENTRAL ARTICULATOR SOCIAL SPACE

### PROGRAM ALTERNATIVE 3

STRATIFICATION

JOURNEY - CONTAINMENT LEVELS

SQUARES AS ARTICULATING SPACES

### SITE ALTERNATIVE 1

MODULATION

RESPECT FOR GREEN SPACES

FOOTBRIDGES - UNION WITH THE NEIGHBORING SQUARE

### SITE ALTERNATIVE 2

SUSTAINABILITY - USE OF EXISTING VOLUMES

PROPORTION

### SITE ALTERNATIVE 3

GROUPING AND LINKING ACCESSES

REDUCING VEHICLE ACCESS

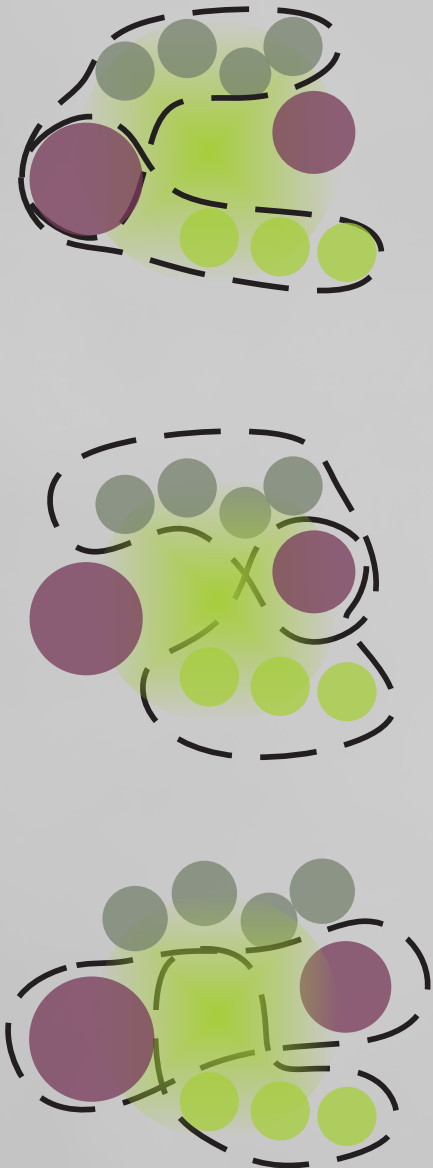
WALKWAYS

CONCEPTO:

S U T U R I N G

# PROGRAM ANALYSIS

## BUBBLE CHART



# REQUIRED PROGRAM

## - REFLECTION OF IRREDUCIBLE MINIMA:

GROUPING OF SPACES  
ACCORDING TO URBAN  
HIERARCHY

- PUBLIC URBAN
- SEMI PUBLIC URBAN
- PUBLIC GROUP



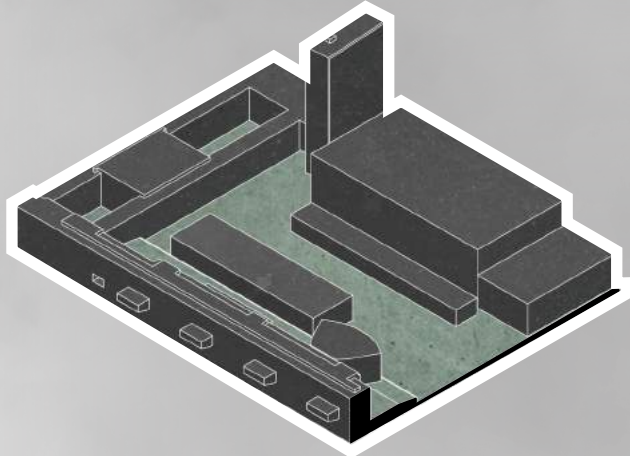
- INFO SERVICES, ENTRANCE AREA  
- CATERING, RESTAURANTS, CAFES  
- SOCIAL, EXHIBITION AND  
MULTIPURPOSE SPACES

- INNOVATIVE INTERDISCIPLINARY  
RESEARCH CENTER STU, STARTUP  
CENTER  
- PRESENTATION (EXPERIENTIAL)  
CENTER OF SCIENCE AND RESEARCH

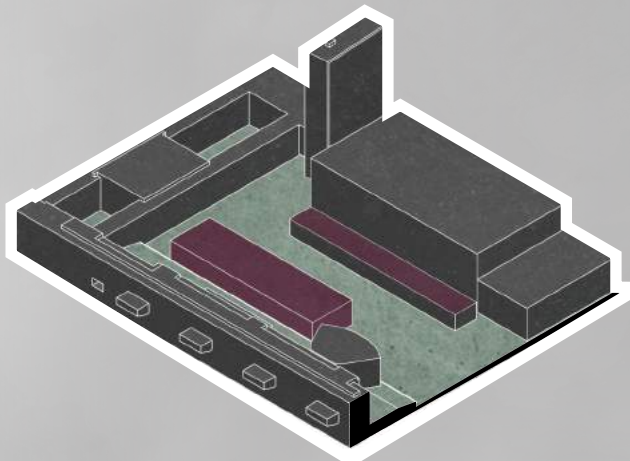
- ADMINISTRATIVE OFFICES OF  
THE RECTORATE IN CONNECTION  
TO RESEARCH  
- MEDIA LIBRARY, STUDY ROOMS  
- WORKSHOP  
- TECHNICAL BACKGROUND

SOCIAL, EXHIBITION AND  
MULTIPURPOSE SPACES

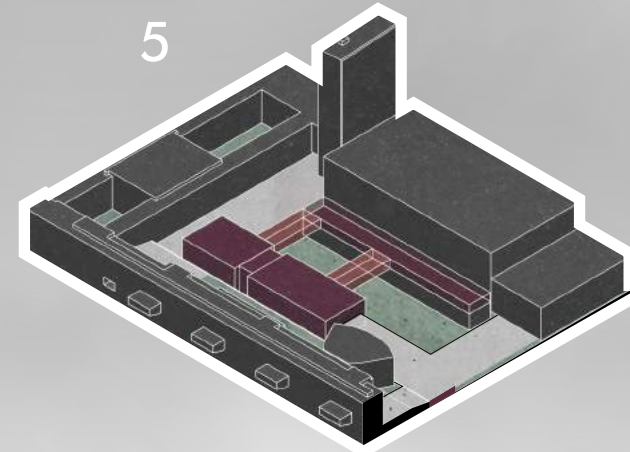
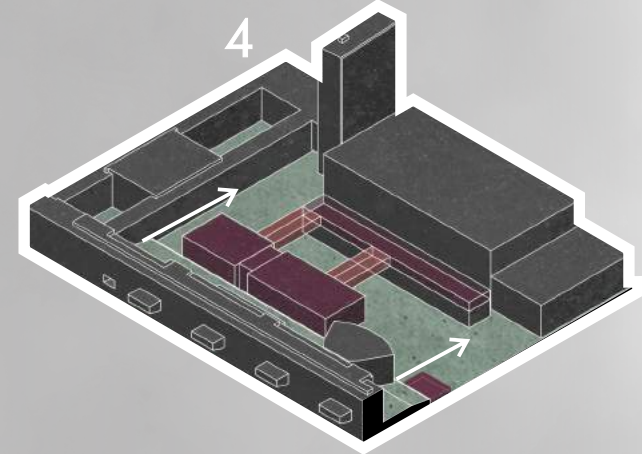
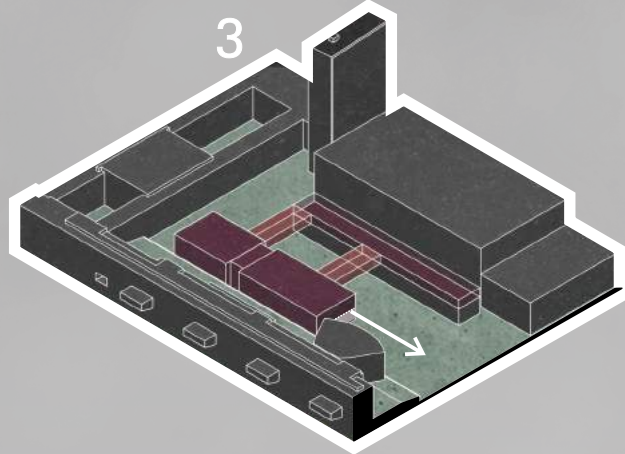
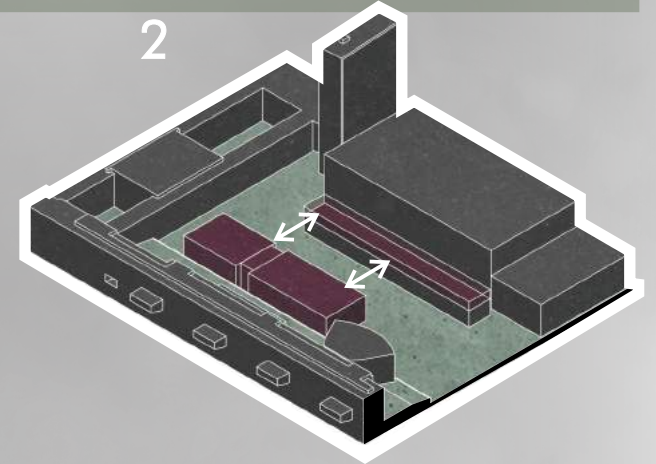
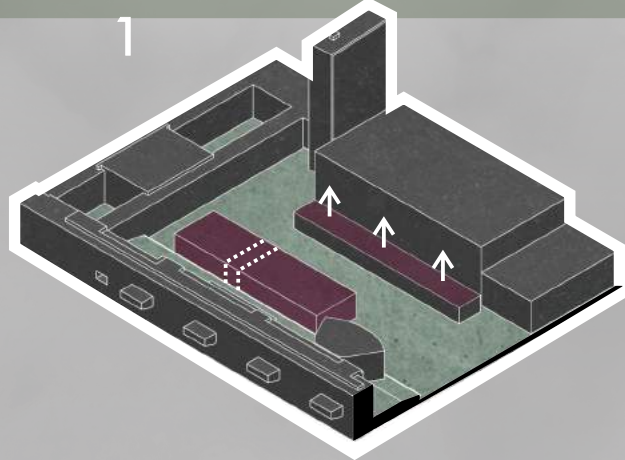
# FORMAL GENERATION



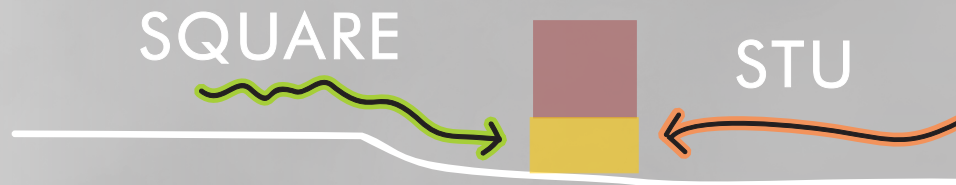
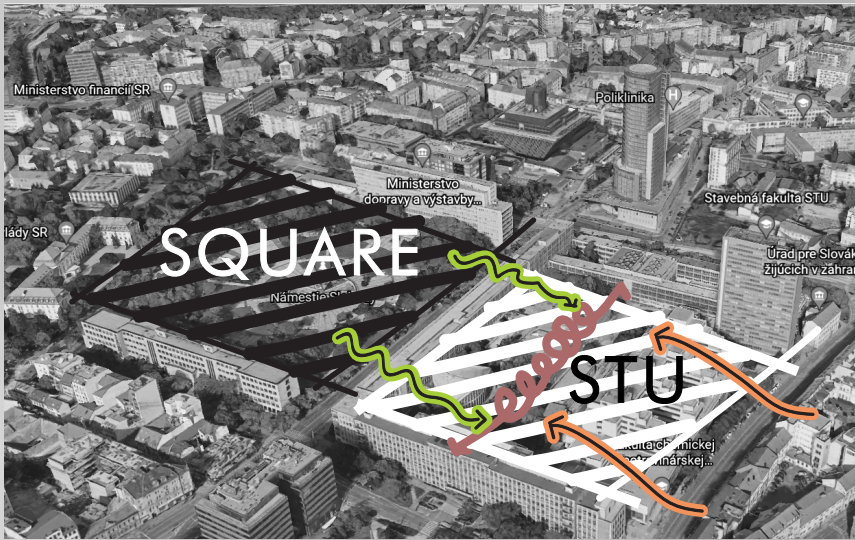
CURRENT SITUATION



STRUCTURE CHOSEN TO INTERVENE



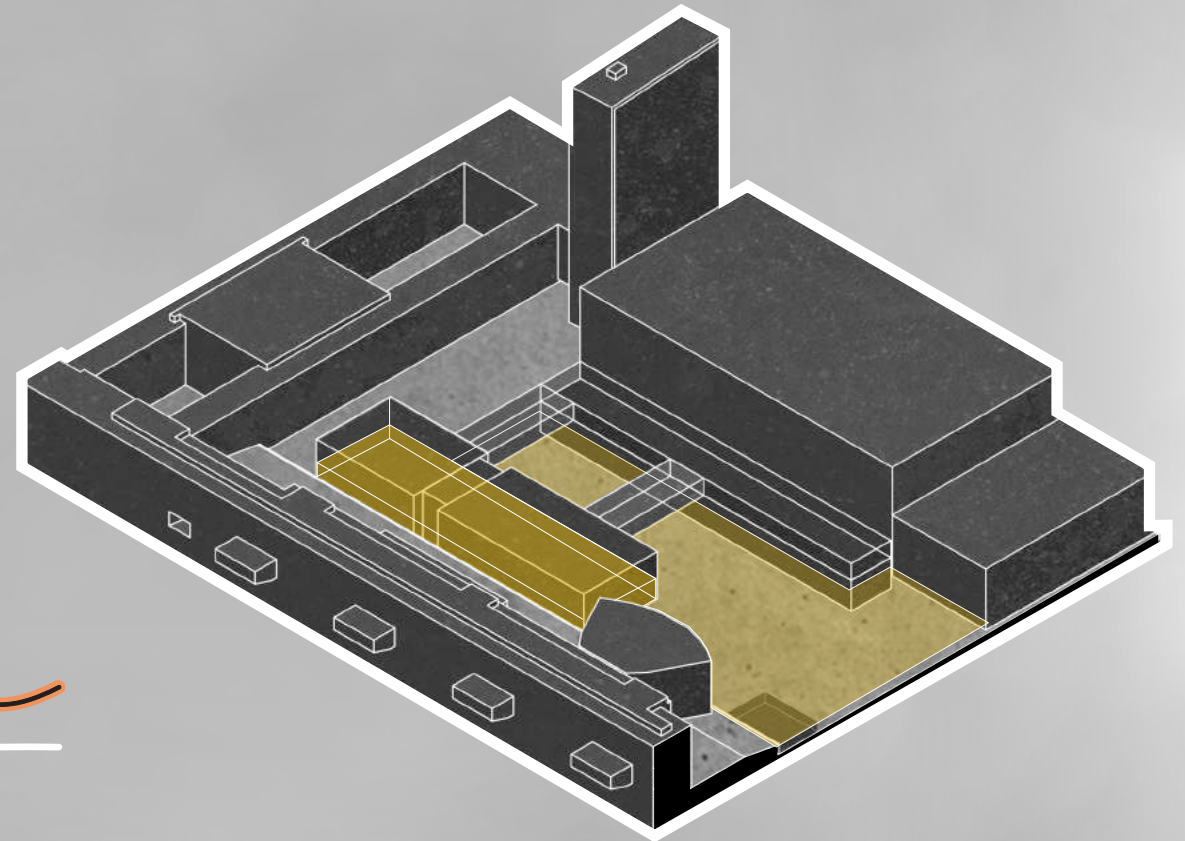
# FORMAL GENERATION



CONTINUITY OF SOCIAL  
RELATIONS SPACES



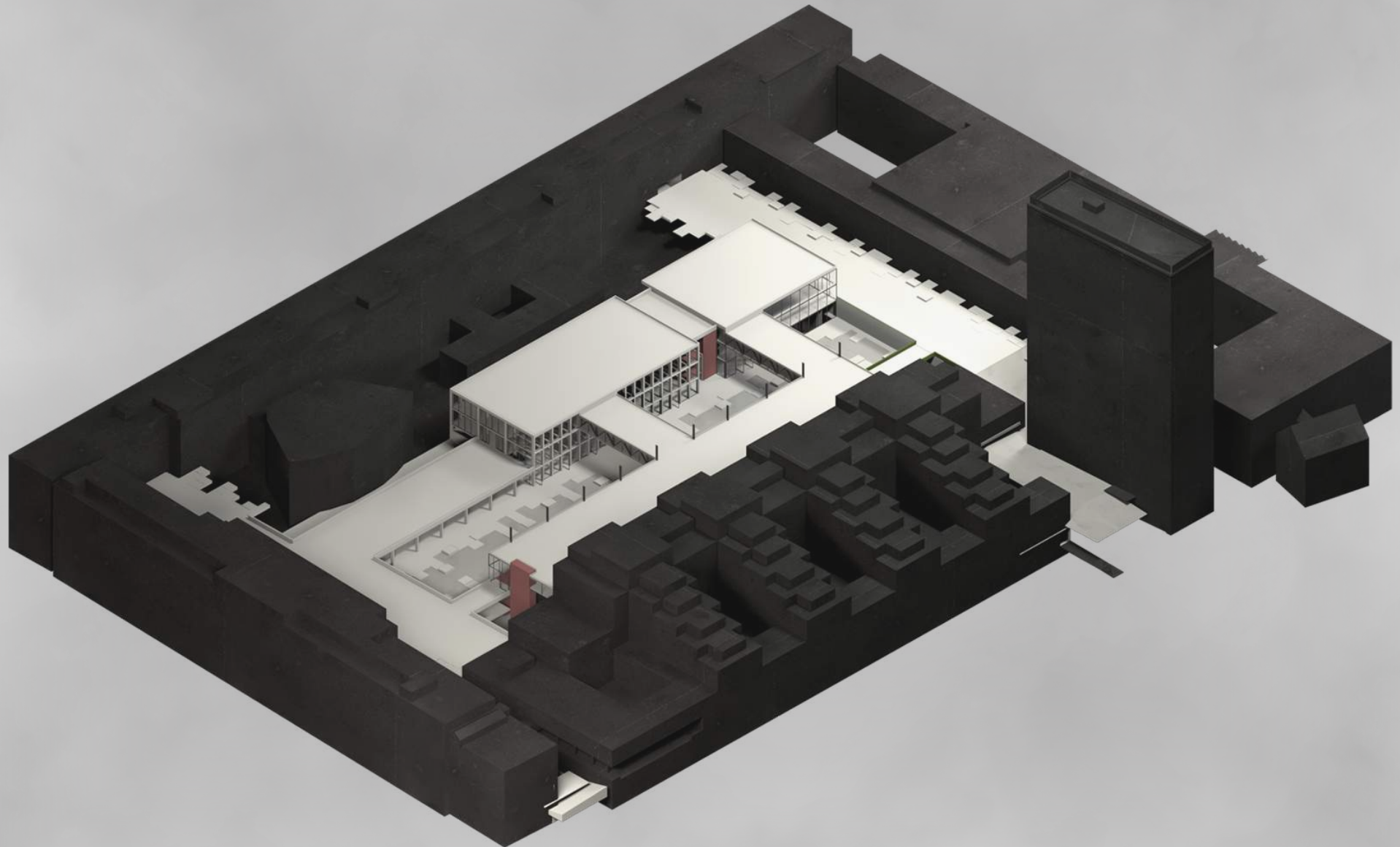
FOUNDATION FLOOR





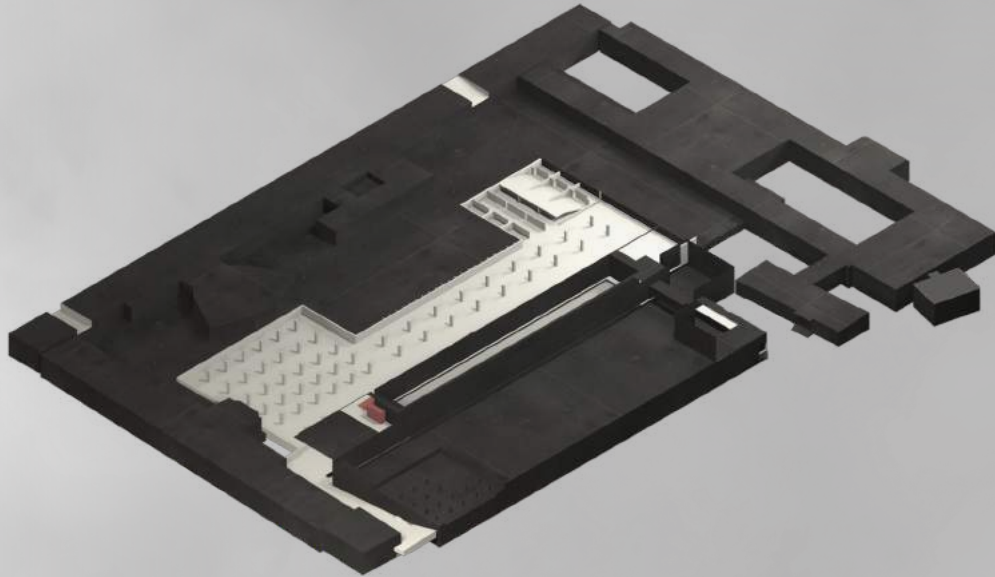
# VOLUMETRY

# VOLUMETRY

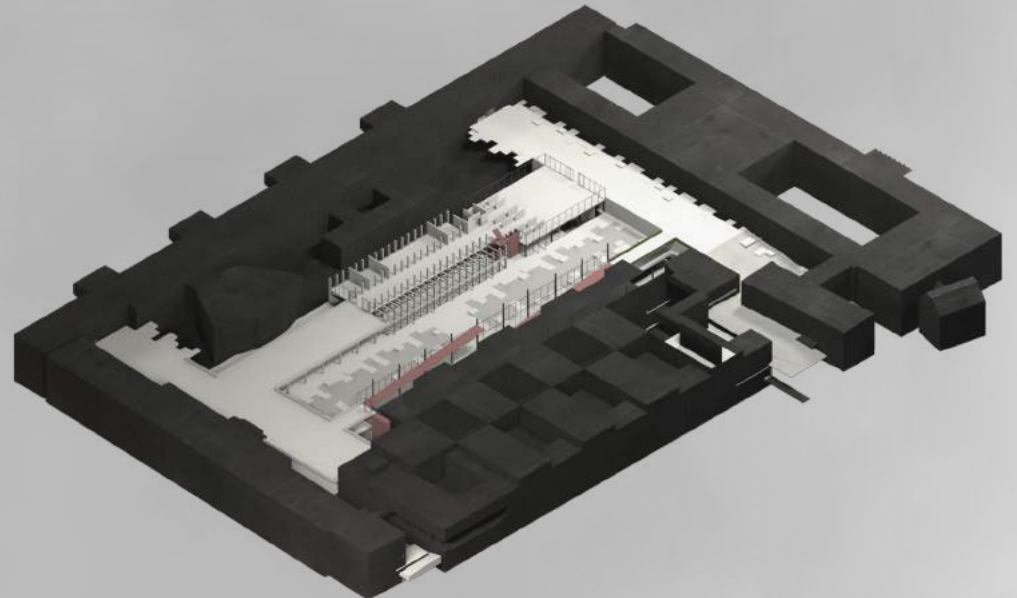


# VOLUMETRIC CUTTING BY LEVELS

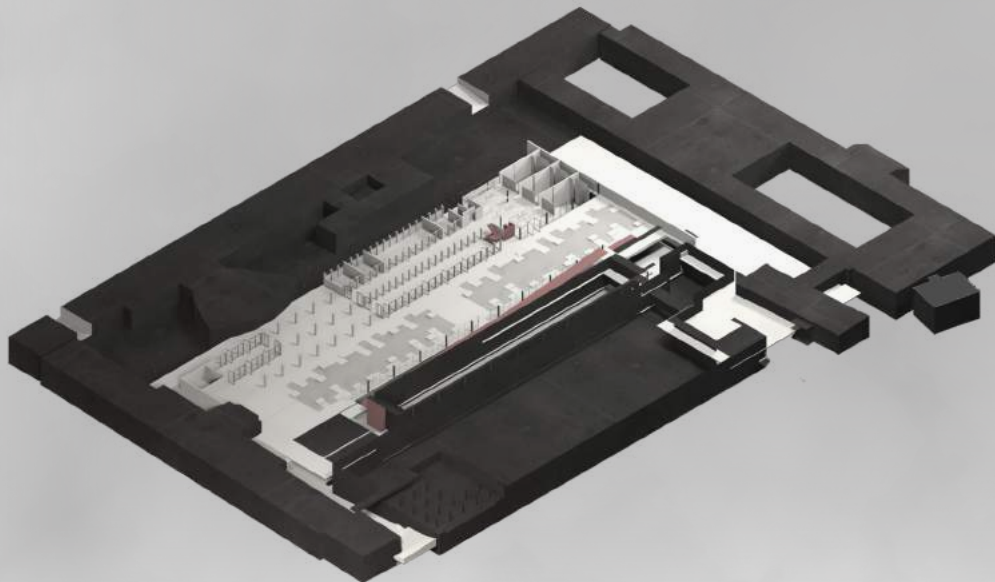
-2 UNDERGROUND FLOOR



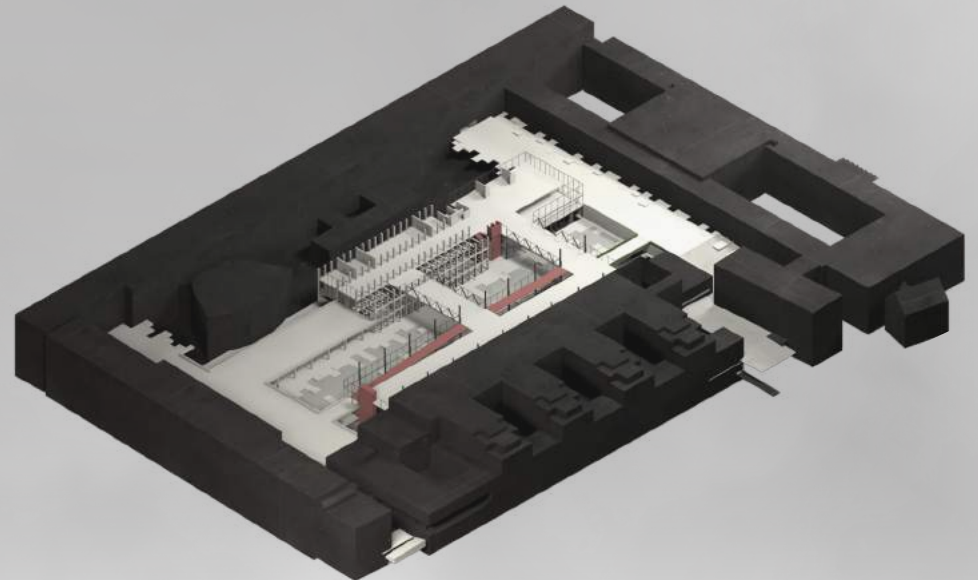
0 SEMI INSTITUTIONAL FLOOR



-1 SOCIAL FLOOR



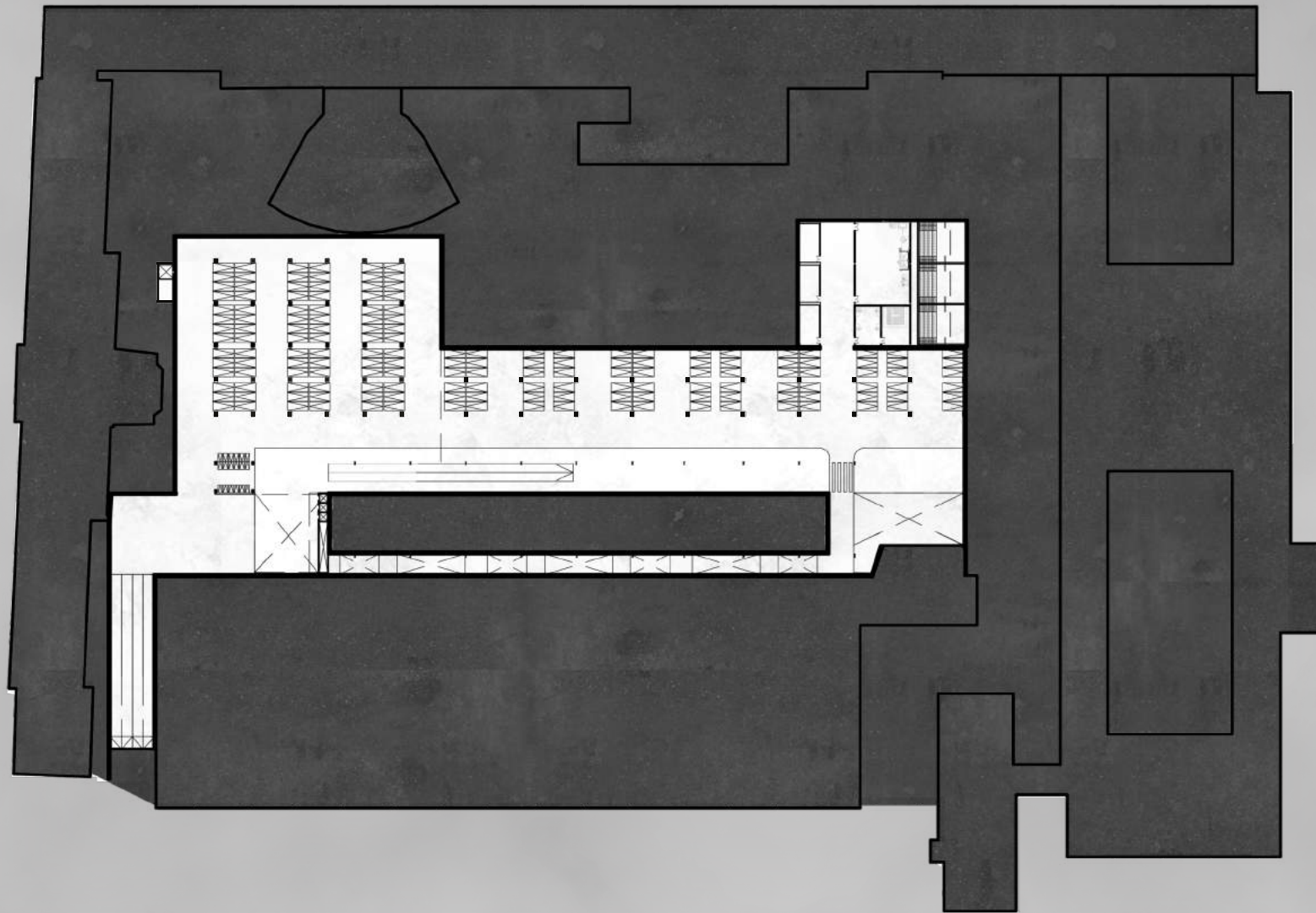
1 INSTITUTIONAL FLOOR





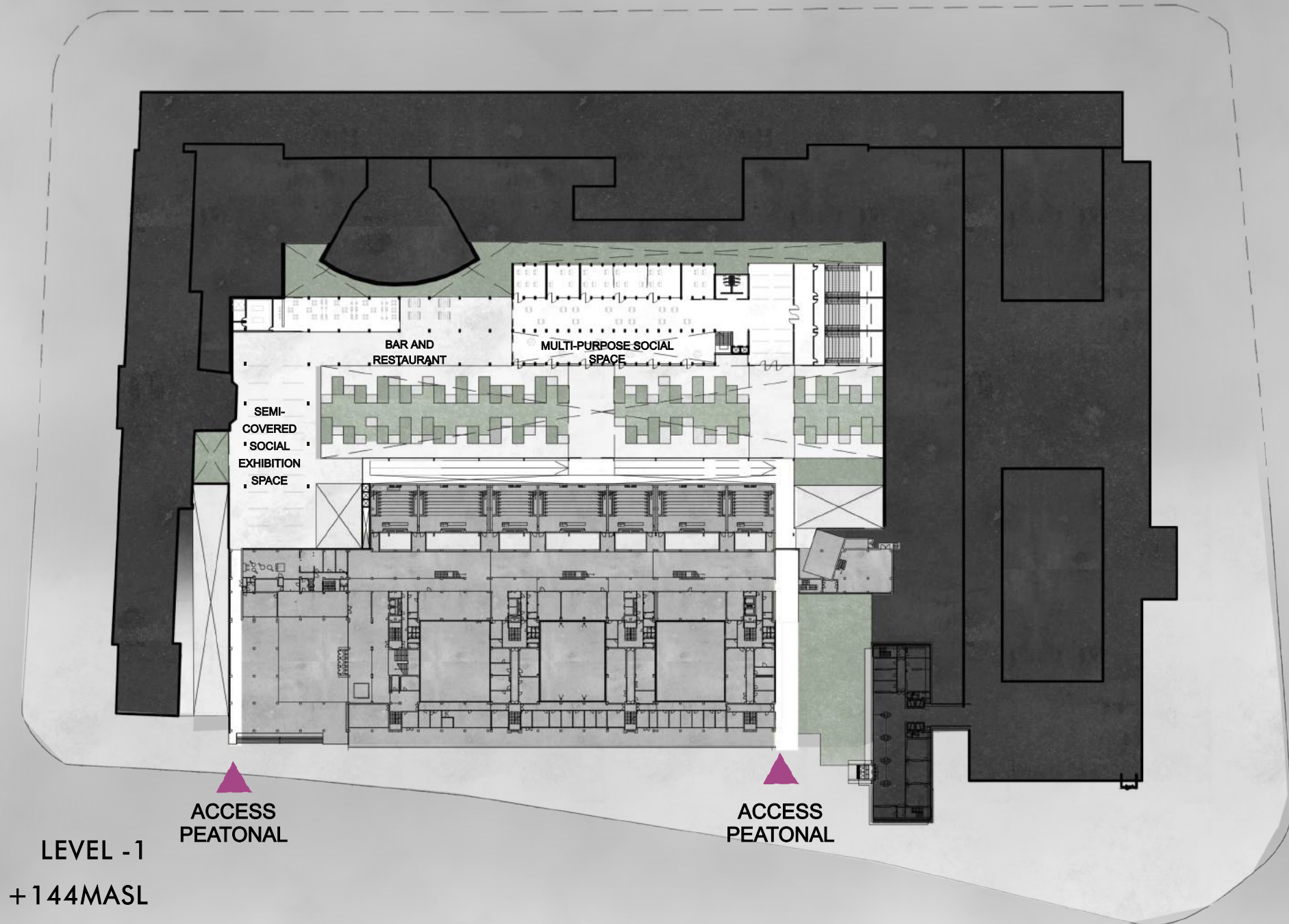
**PLANIMETRY**

# UNDERGROUND PARKING FLOOR

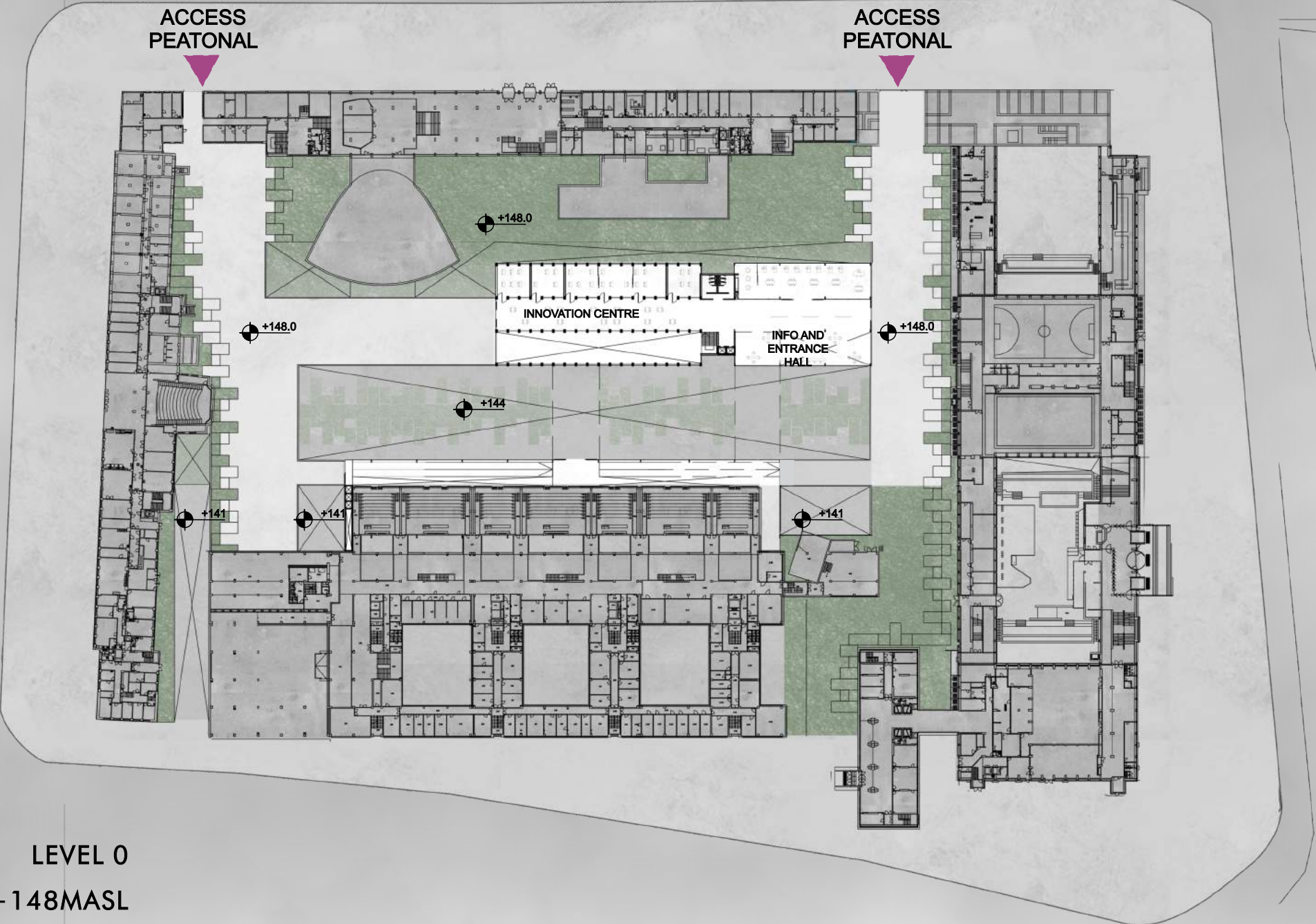


LEVEL -2  
+141MASL

# SOCIAL MULTIPURPOSE FLOOR



# SEMI INSTITUTIONAL FLOOR



LEVEL 0  
+148MASL

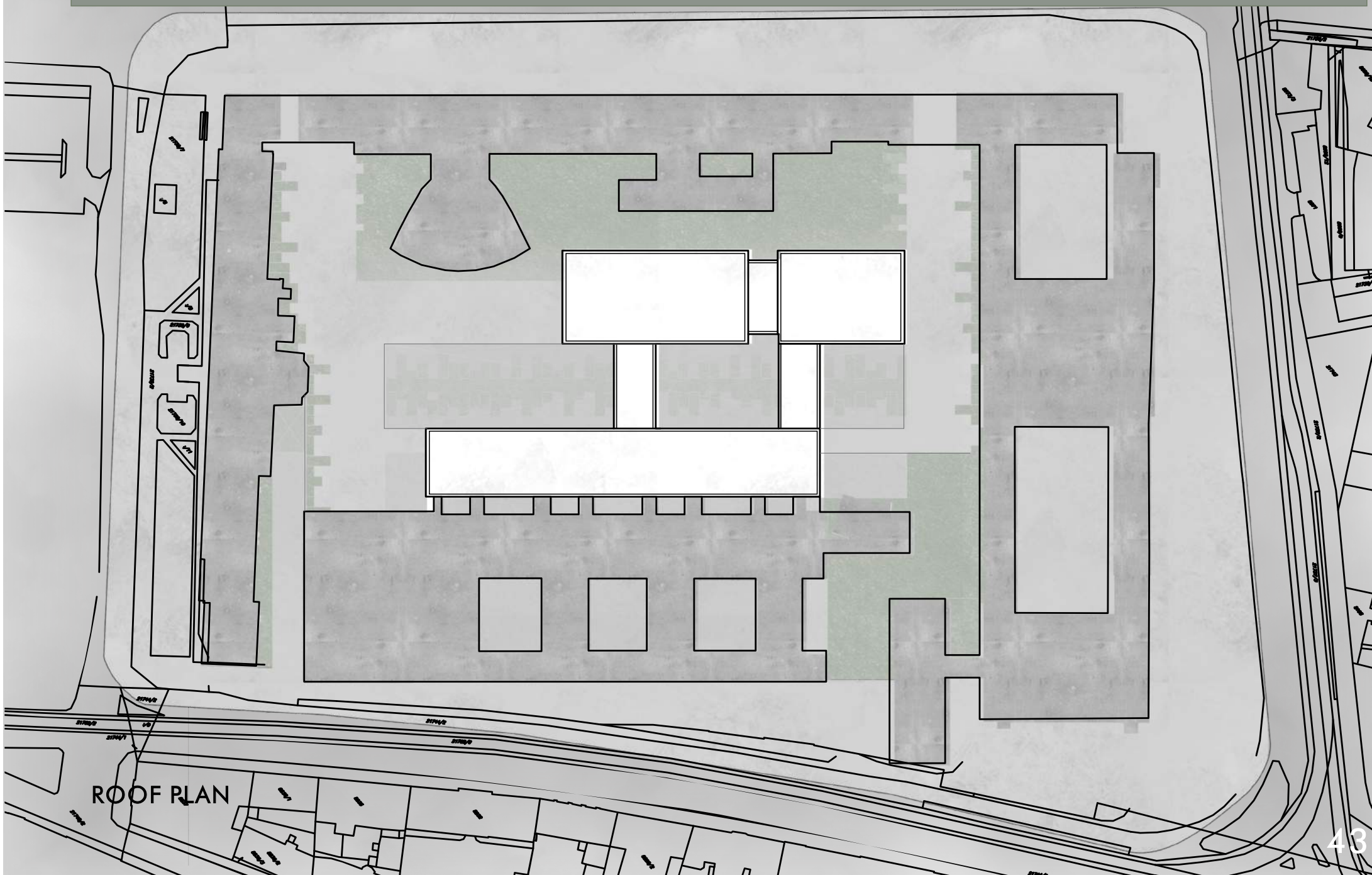
# INSTITUTIONAL FLOOR



LEVEL 1

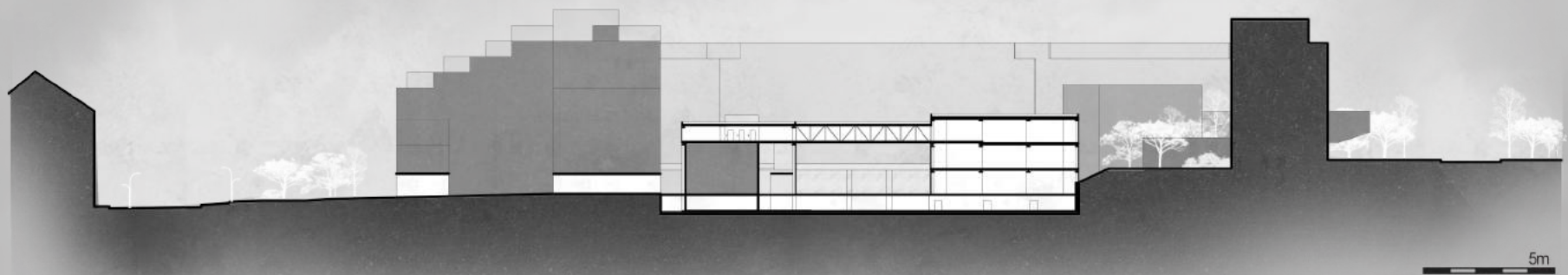
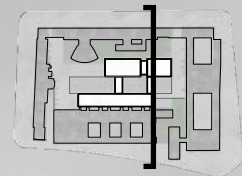
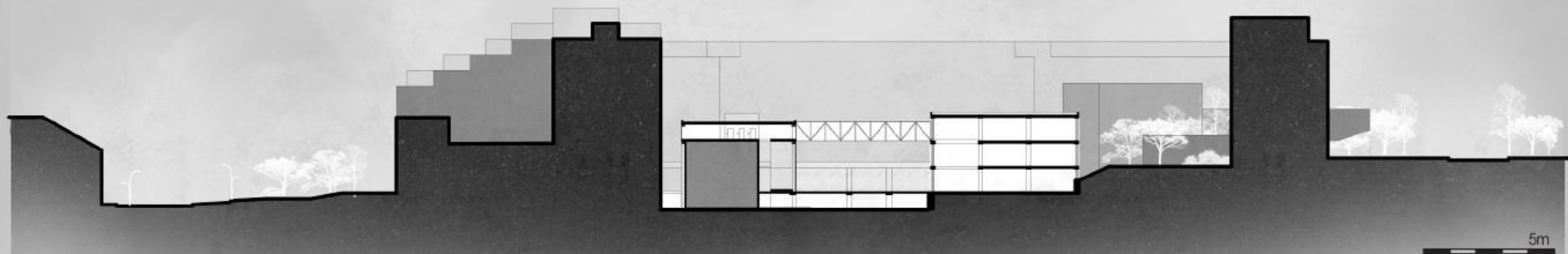
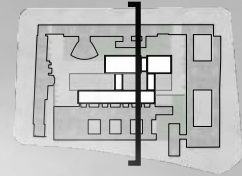
+153MASL

# ROOF PLAN

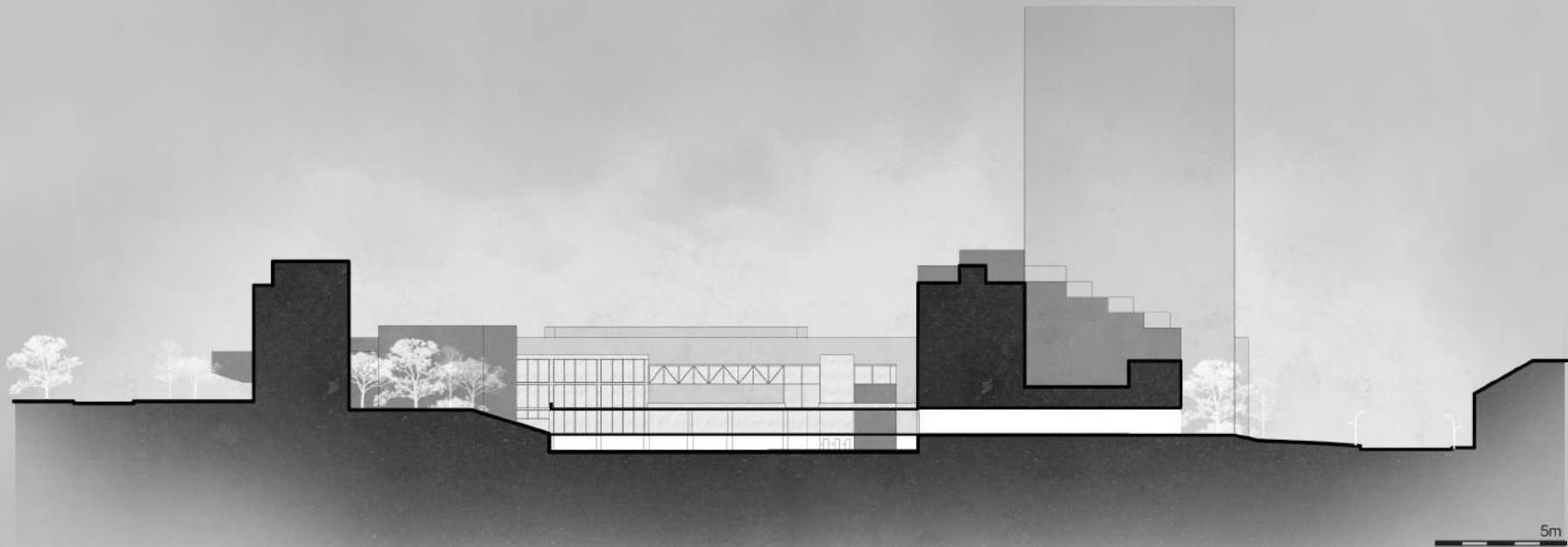
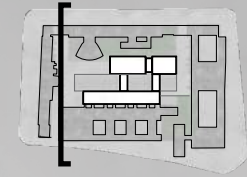


ROOF PLAN

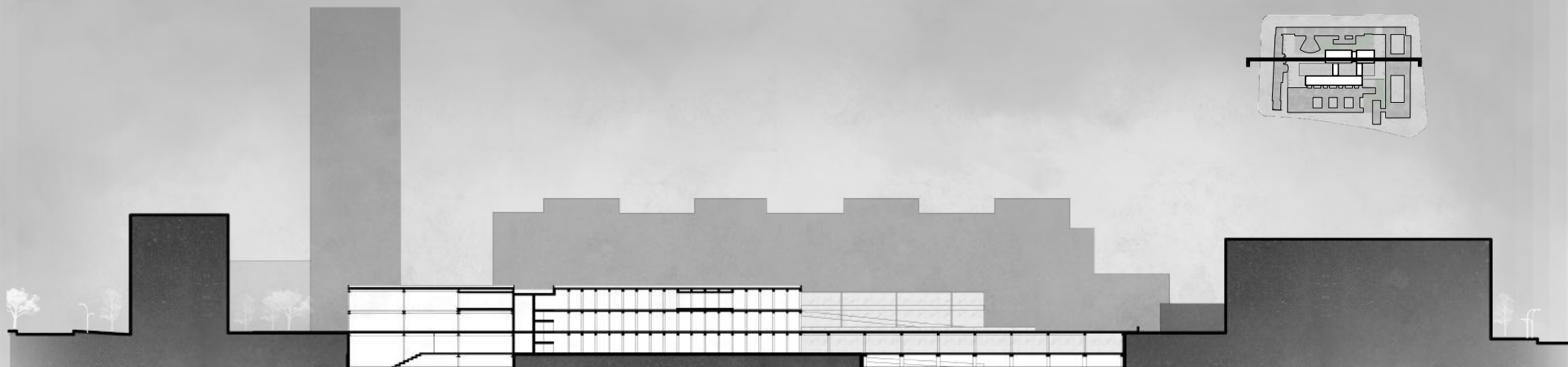
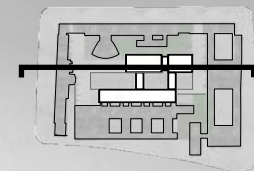
# SECTIONS



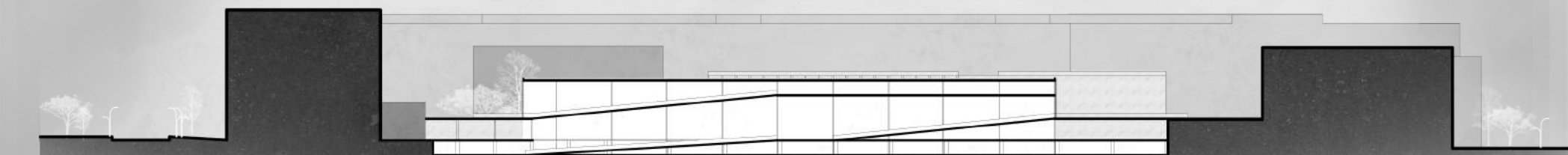
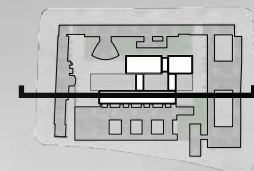
# SECTIONS



# SECTIONS



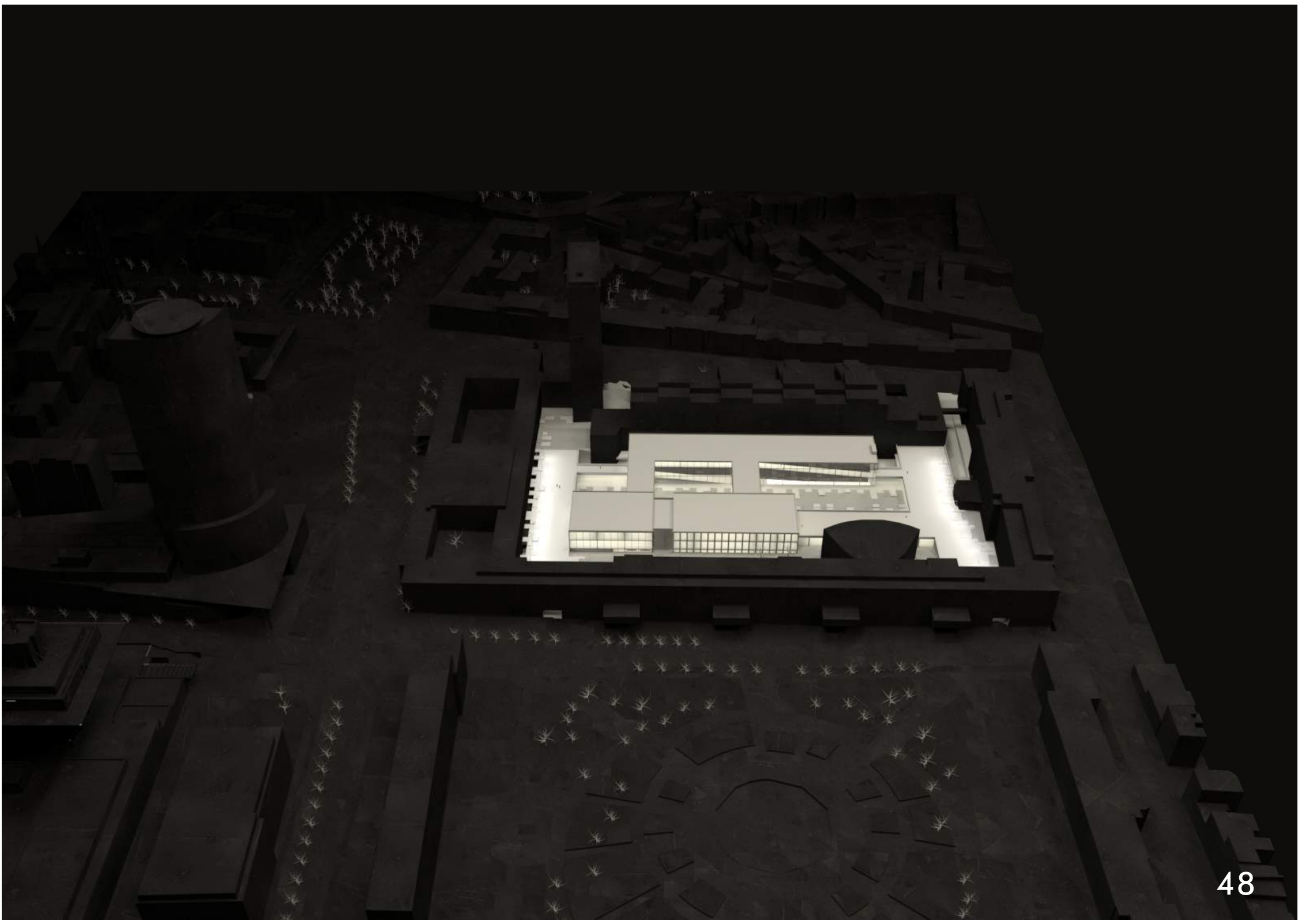
5m

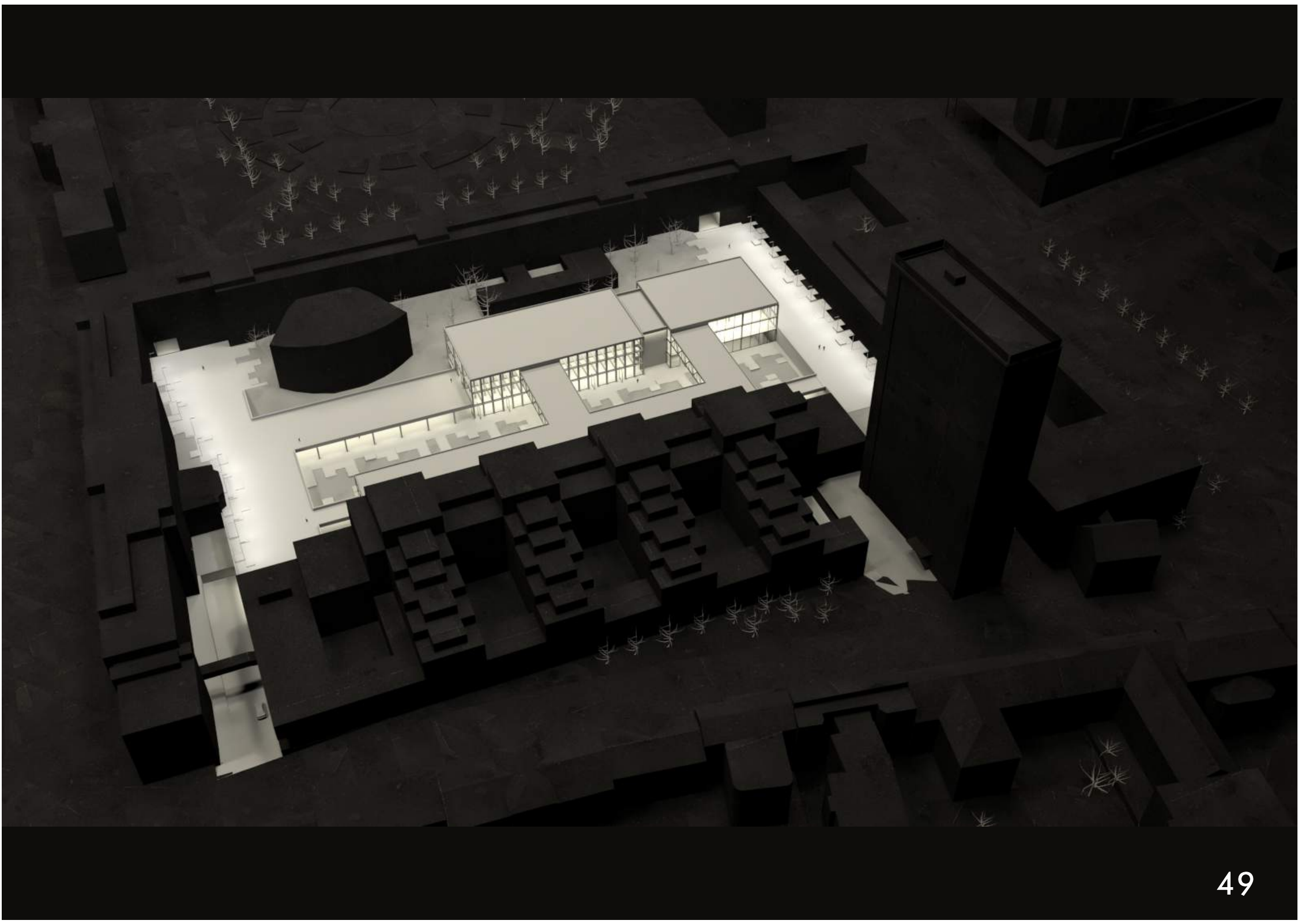


5m

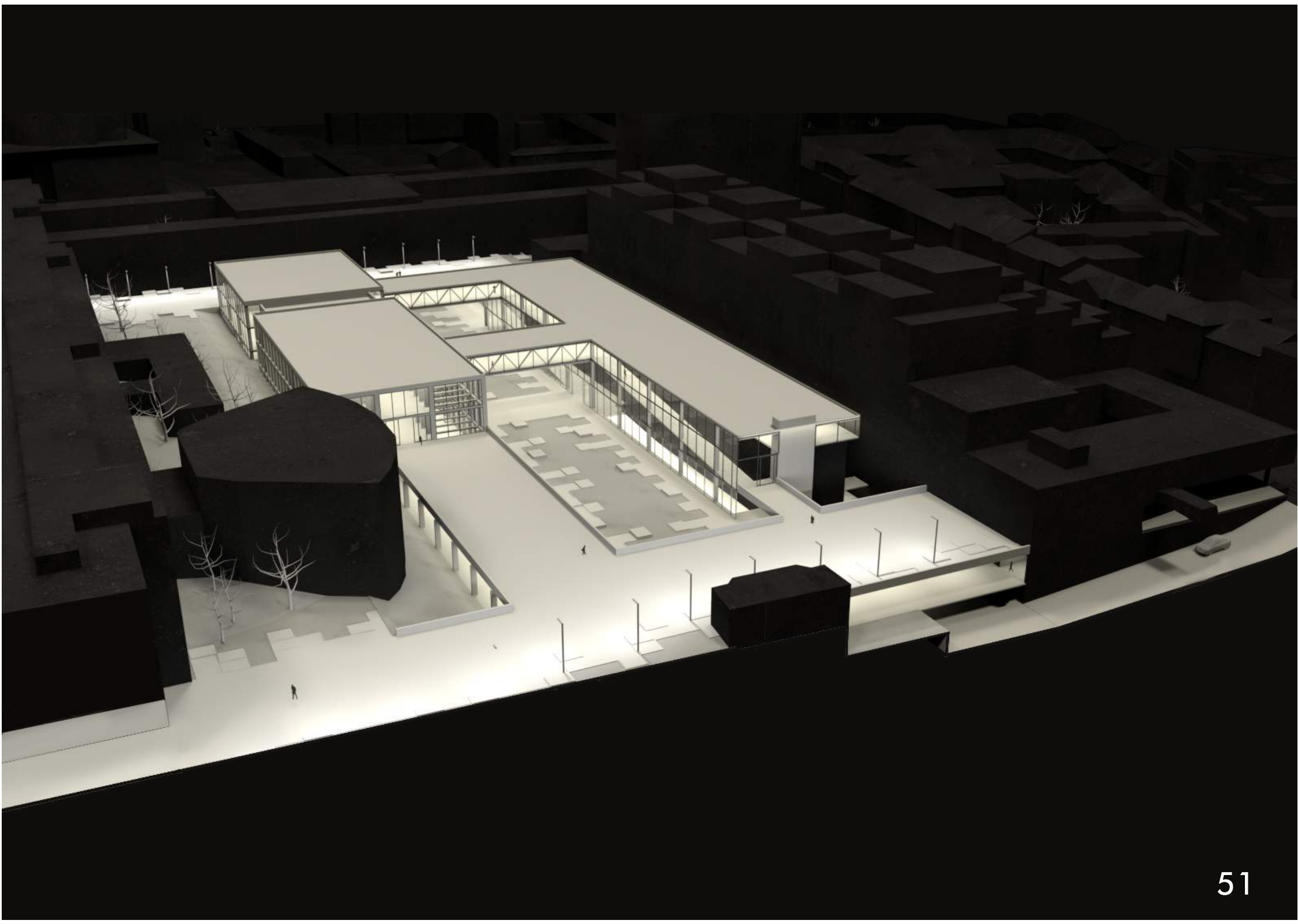


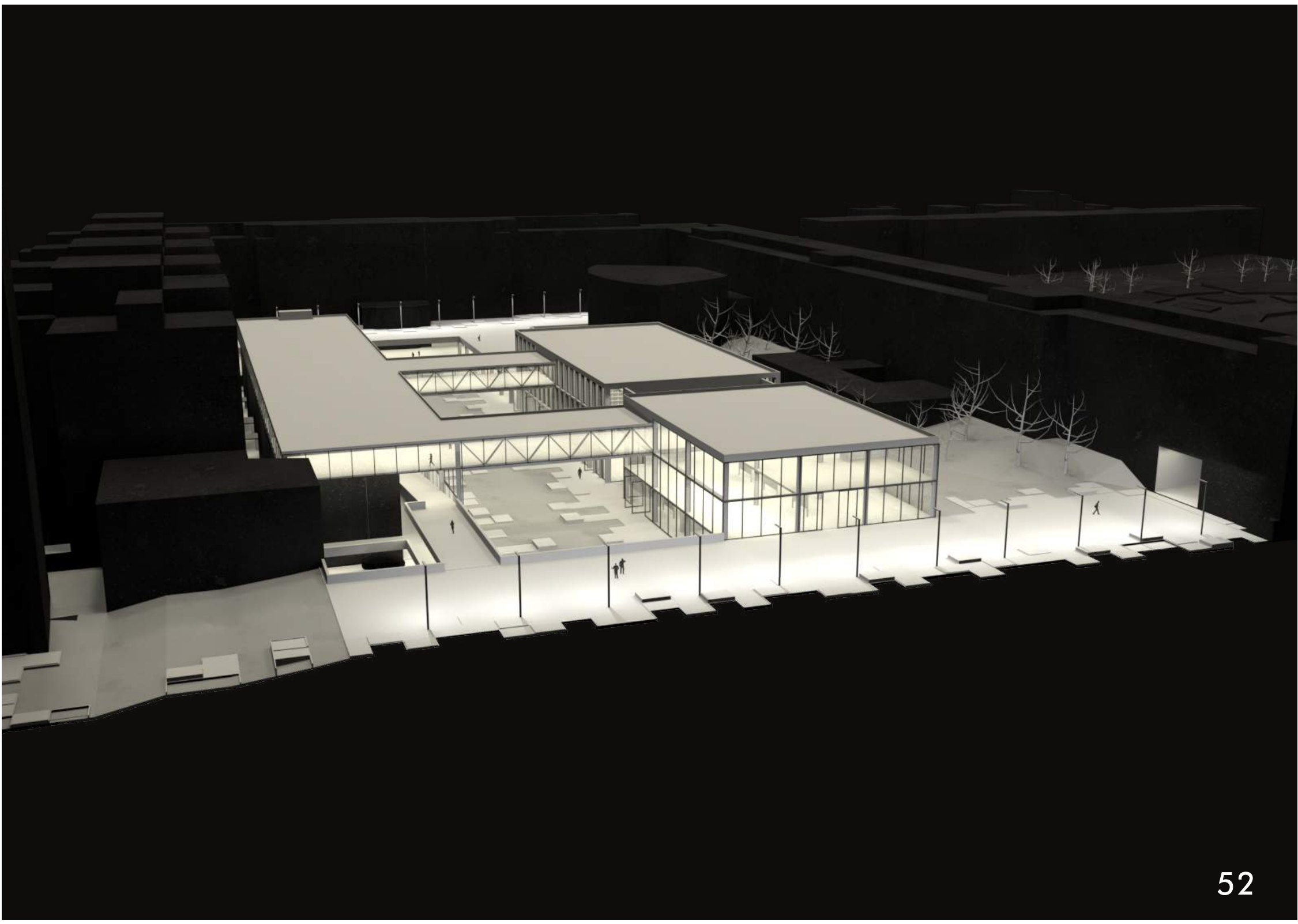
**VIRTUAL MODEL**









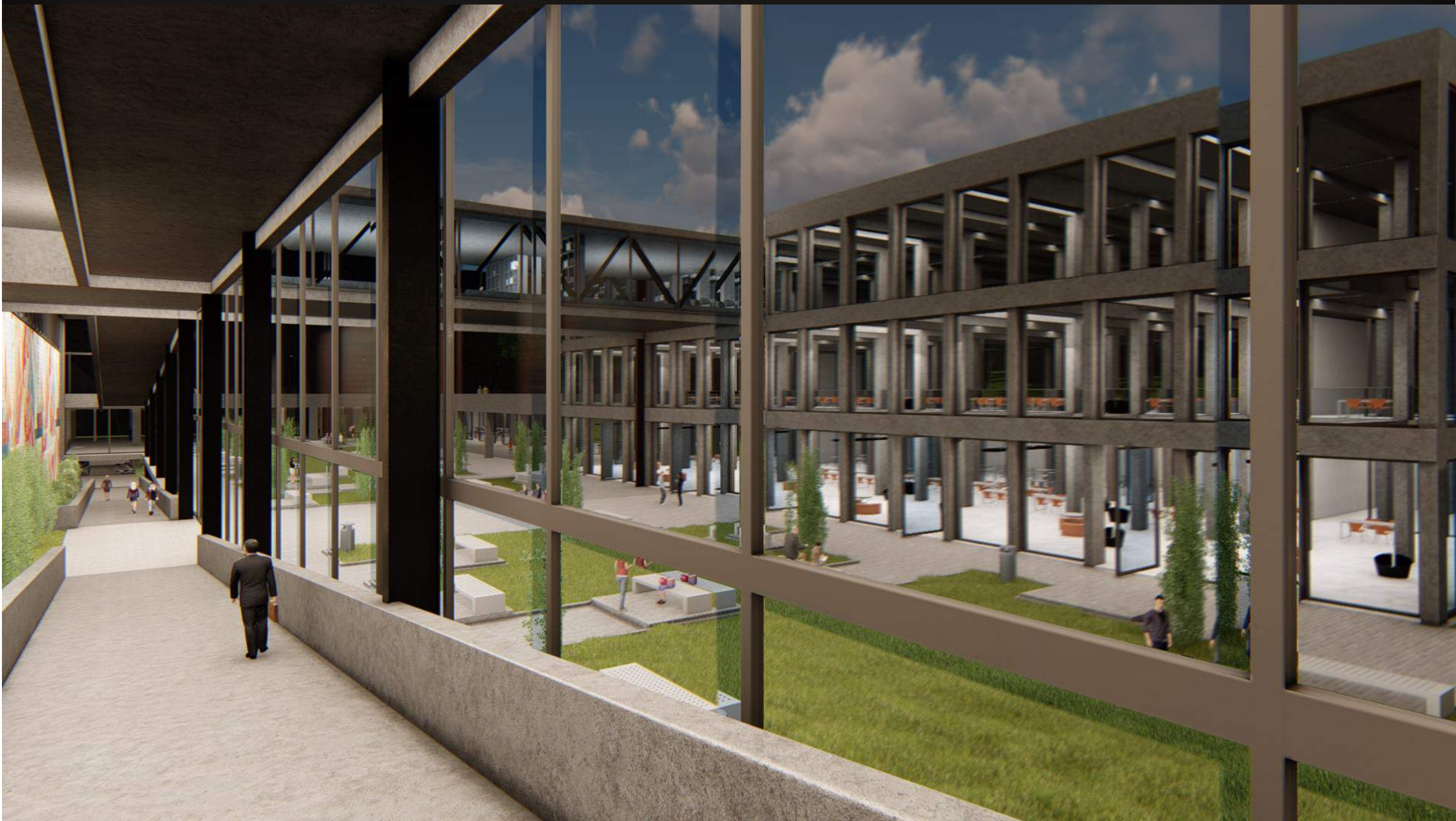




**GALERÍA**















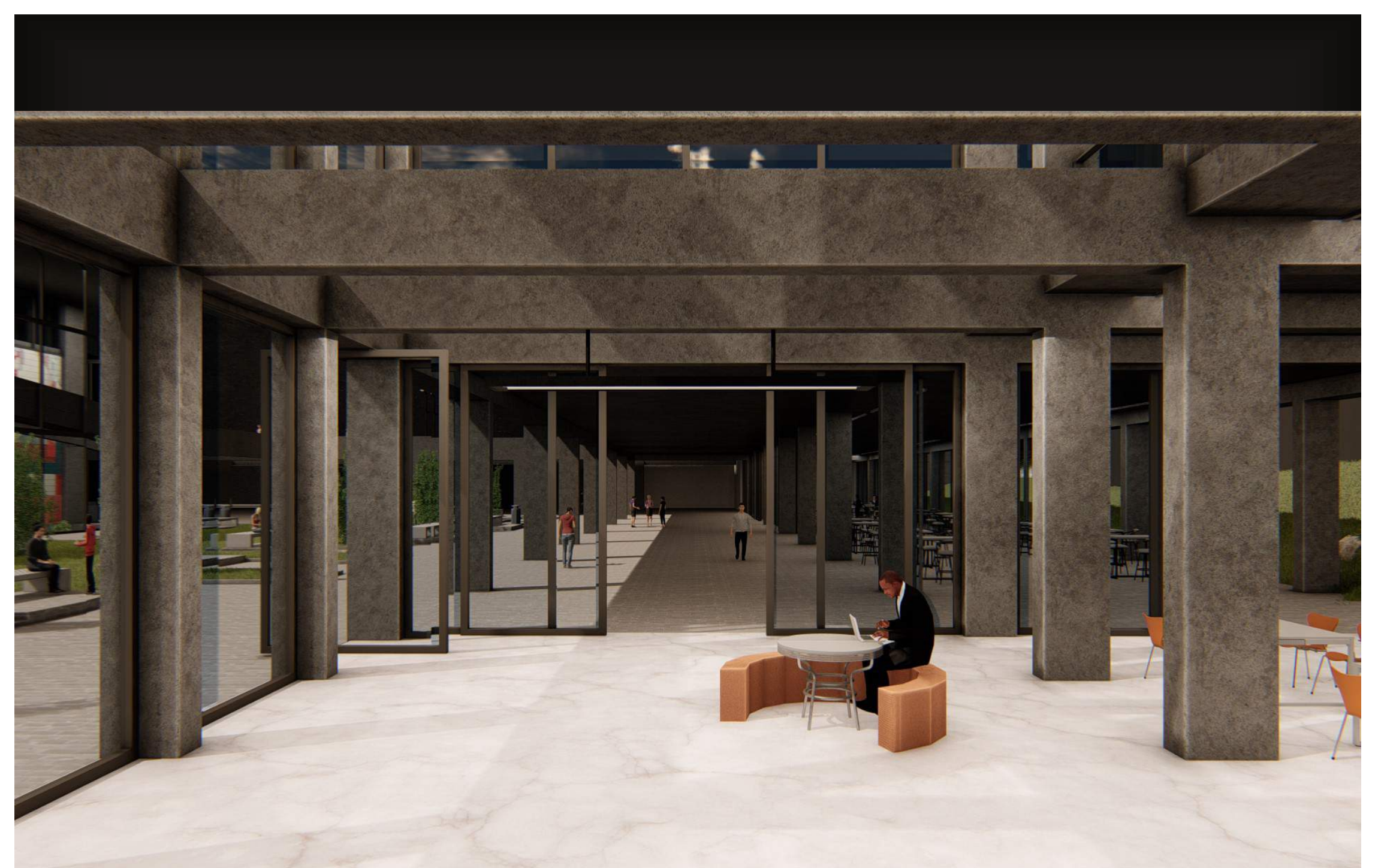














SCAN ME



SCAN ME



SCAN ME

PROJECT DESIGNED BY:



GARCIA PEREZ,  
NATALIA



GRAU,  
MARIANA



OCAMPO,  
LUCIANA

INSPIRELLI 2021 INTERNATIONAL COMPETITION

FACULTY OF ARCHITECTURE AND URBANISM  
NATIONAL UNIVERSITY OF TUCUMÁN