

VILLA

B³

The challenge of this project was to adapt to the topography of the site, but more than that, we must respect the regulations and consider the well-being of the inhabitants in our approach.

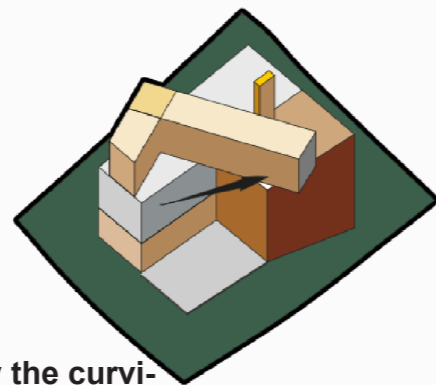
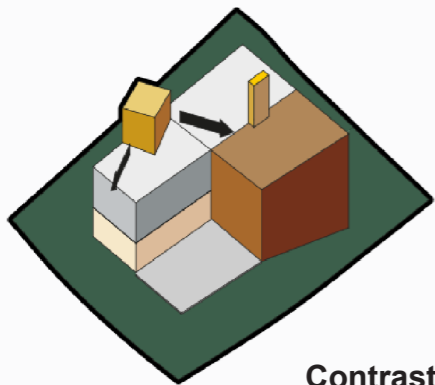
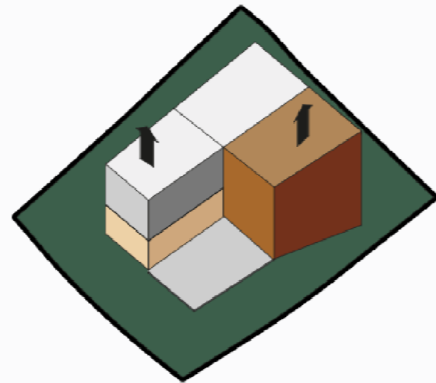
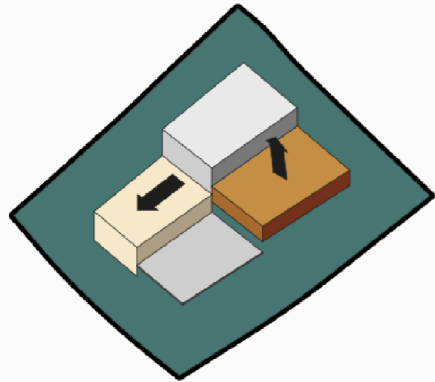
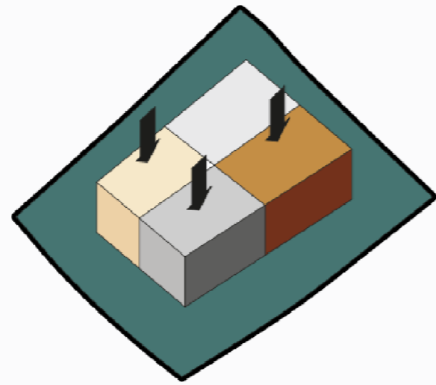
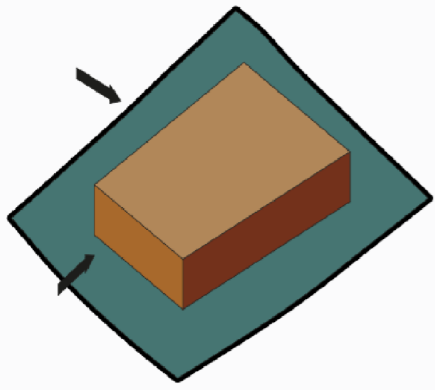
Villa B³ takes its name from the major materials of its construction: Concrete, Wood, and Brick. I opted for materials in their raw form, because the textures affect our senses and allow to reinforce the spatial experience of the building, especially the brick that I chose to apply in the key elements of the project: the wall parametric brick, the fireplace, the stairs, the entrance, and the living room.

The concept was to restart the program according to the levels of major curves of the land, There are four: the highest level was dedicated to the ground floor, the one that follows it for a double height lounge, the 3rd, a basement housing a garage and laundry room, and the lower one for a patio with swimming pool.

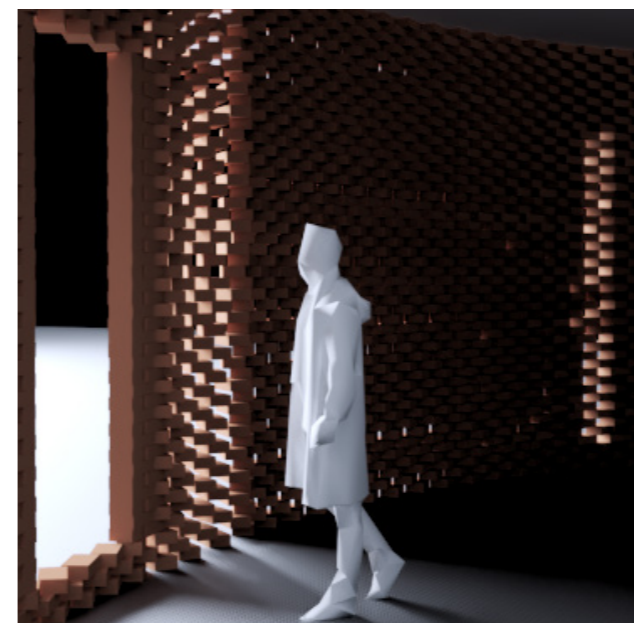
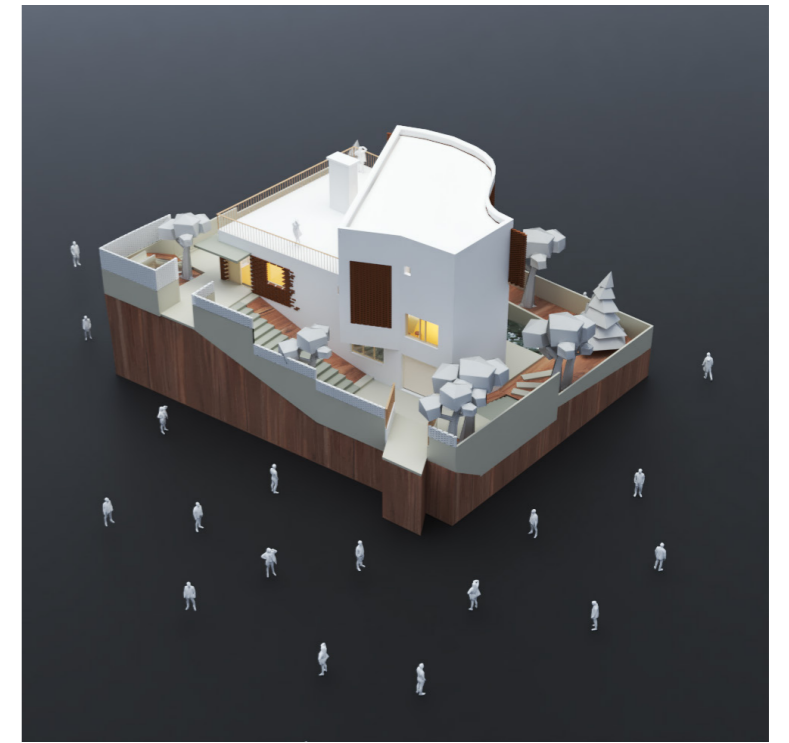
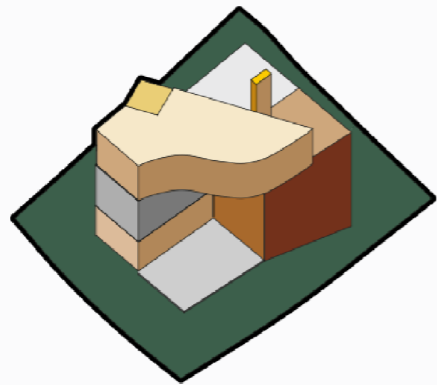
then I added the 1st floor, the whole is connected by a staircase on which I made a rotation to add more dynamism to the volume, as well as a stabilizing element which is the fireplace.

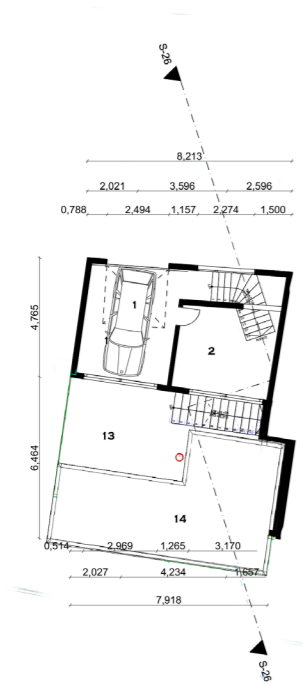
to contrast with the rectilinear geometries of the massing, a curvilinear wall has been added which extends from the stairs and from the children's room to the master bedroom. this parametric wall is made of brick, the brick closes and opens in specific parts, in order to allow an aesthetic entry of light, intimacy and a sensual texture that calls the senses.



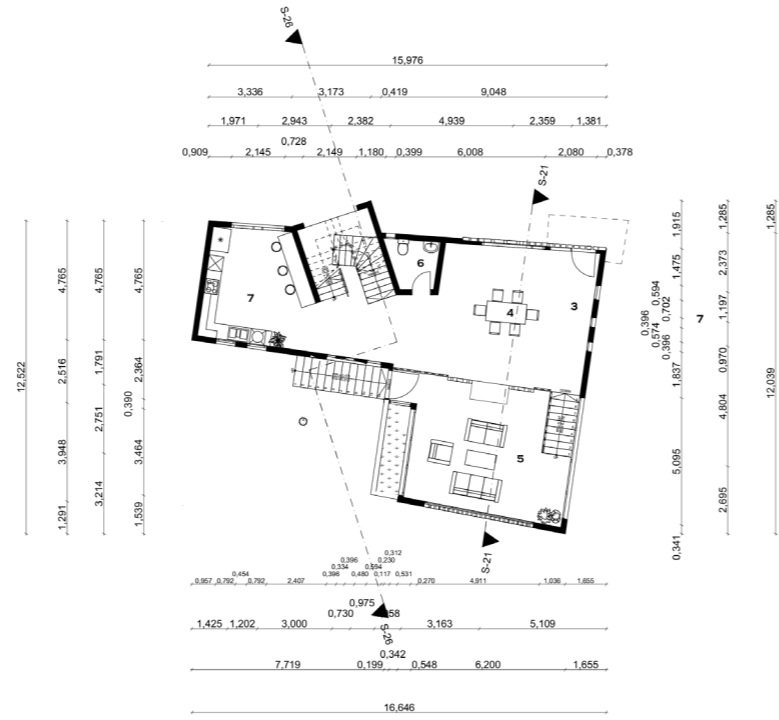


Contrast provided by the curvilinear wall and Dynamism by the rotation of the stairs

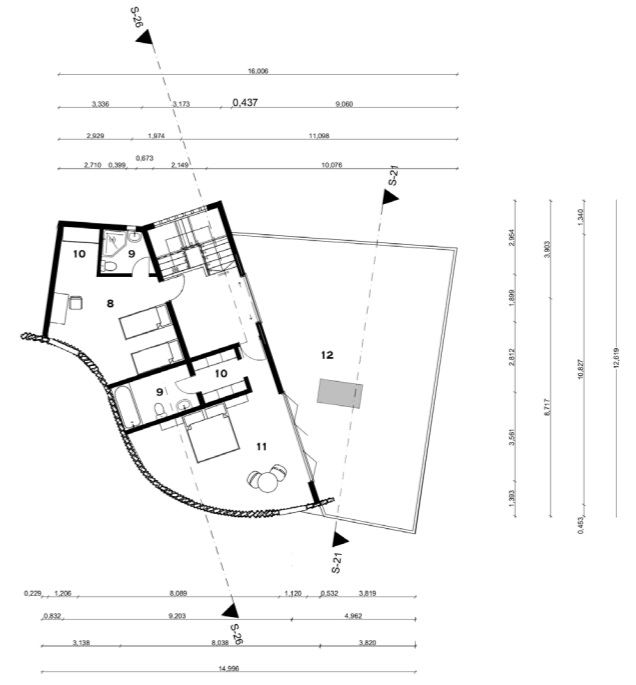




SOUS-SOL



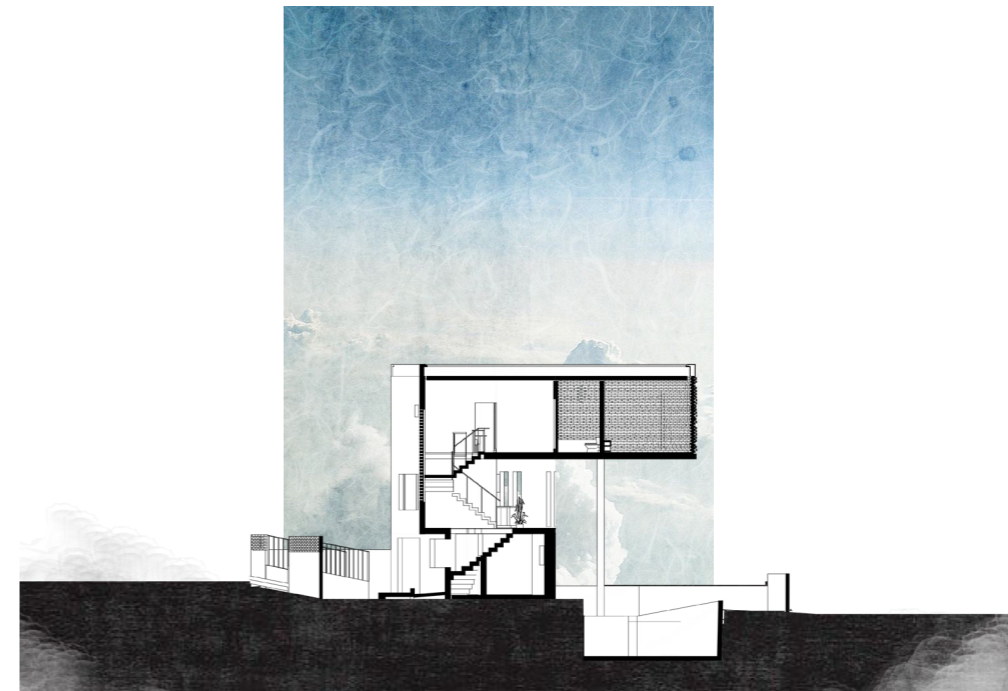
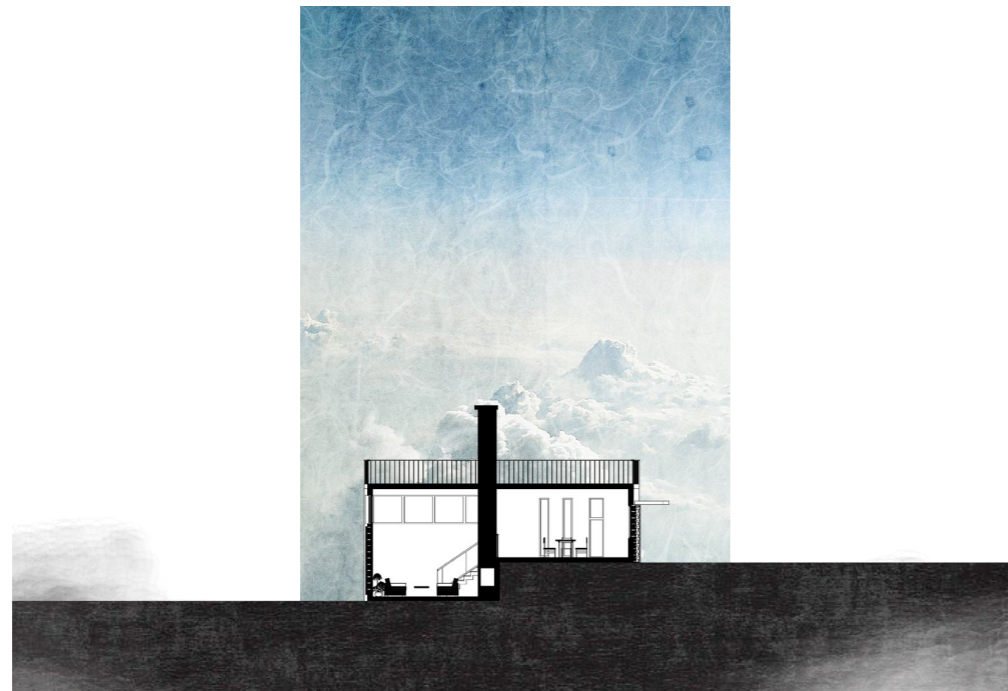
RDC



ETAGE

- 1-GARAGE
- 2-BUANDERIE
- 3- HALL D'ENTREE
- 4- SALLE A MANGER
- 5-SALON
- 6-WC
- 7-CUISINE
- 8-CHAMBRE D'ENFANTS
- 9- SDB
- 10-BRESSING
- 11-CHAMBRE PARENTALE
- 12-TERRASSE
- 13- PATIO
- 14- PISCINE

The ground floor has two wings forming an L, where the daytime functions are housed distributed around a central fireplace which plays the role of both the unifying object and the separator of the space by organizing the visual and physical links of this level between the dining room and the living room which is a few steps lower. The stairs by their dynamic form communicate between the different levels without forgetting the role of the patio which unifies the entire life of the structure



FACADE PRINCIPALE



FACADE SOUTH



