

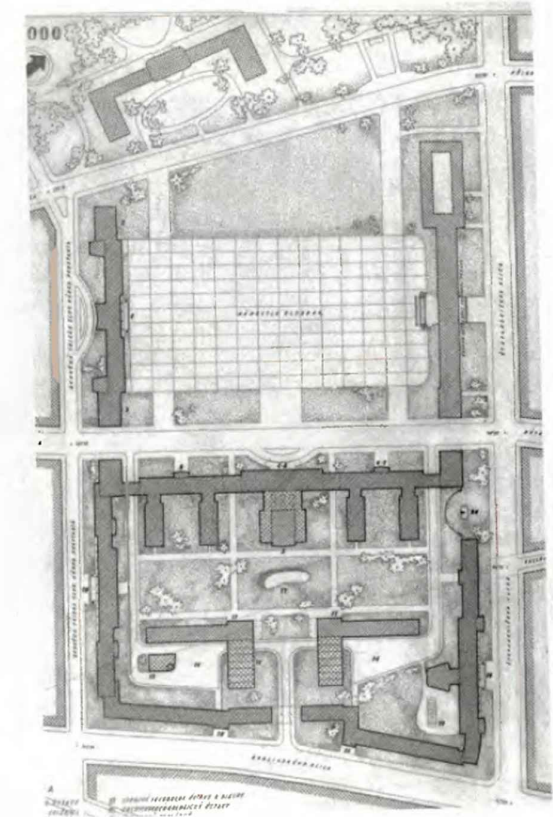
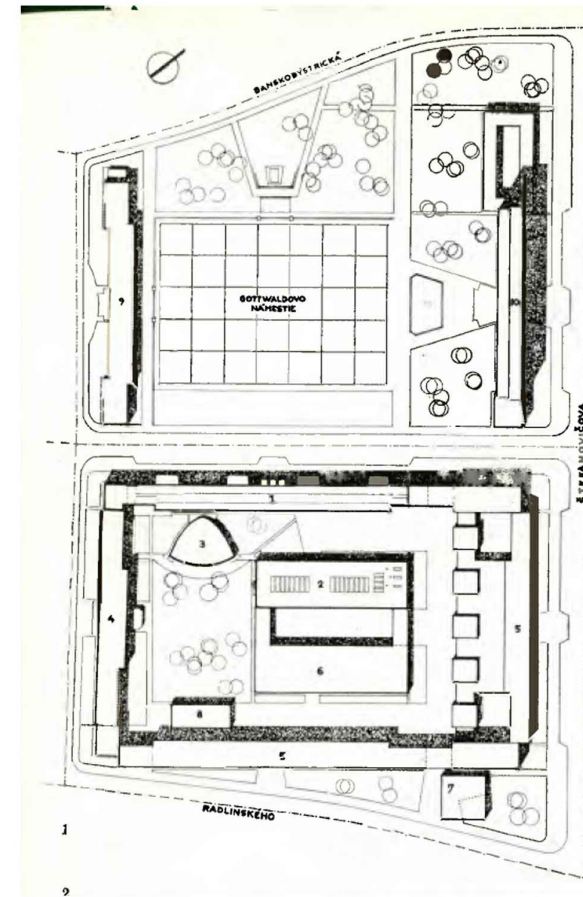
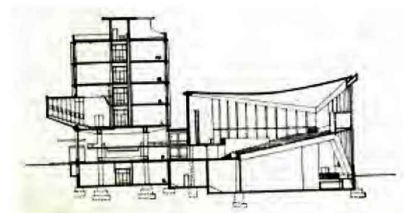
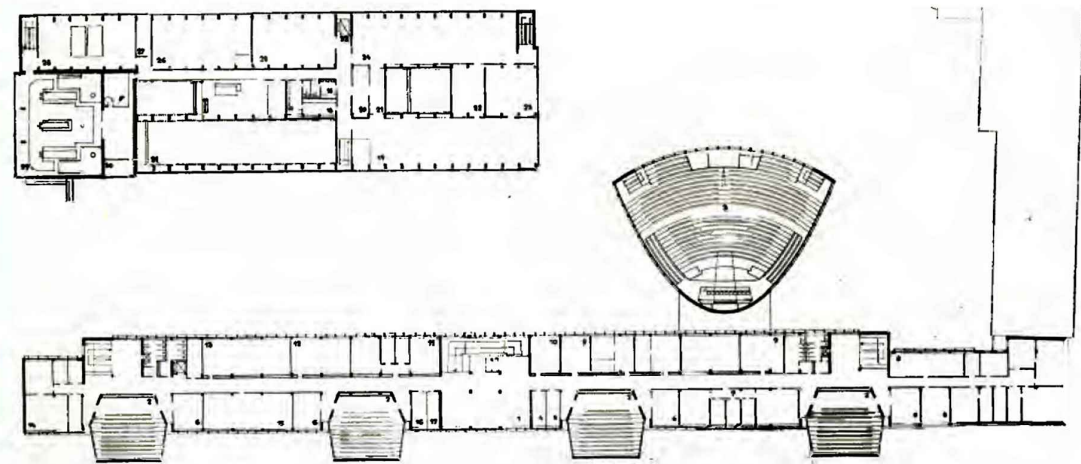
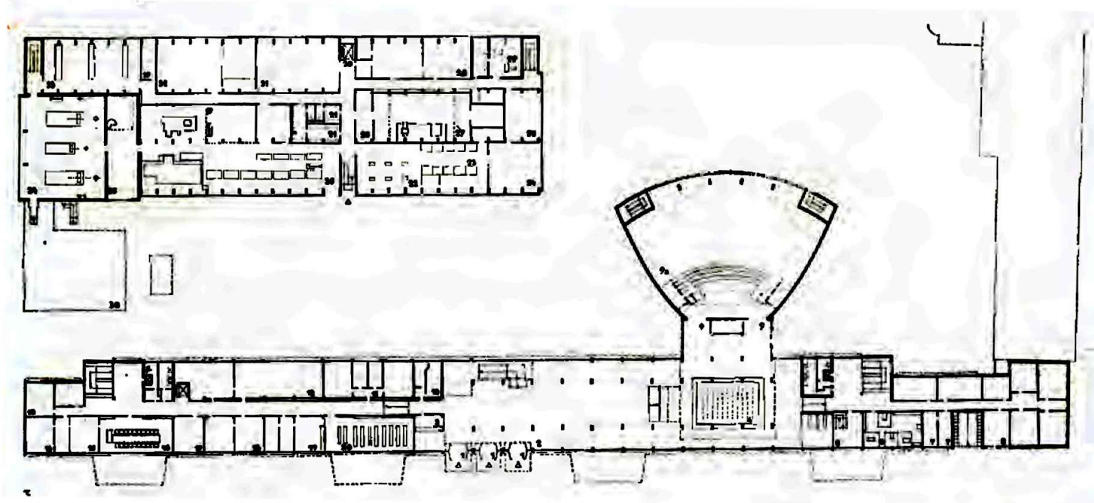




STU Bratislava







HISTORY

- schemes of comprehensive urban design of the Slovak Technical University
- on the left side the design by architect Martin Kusé the Elder, from which the building of the Faculty of Mechanical Engineering with laboratories was realised
- on the right a design by architect Emil Belluš from 1947



VIEW OF THE HEAVY LABORATORY BUILDING

- bad aesthetic impression
- space taken up by static traffic
- poor technical condition of the building
- insufficient greenery



VIEW OF THE AUDITORIUM OF THE FACULTY OF MECHANICAL ENGINEERING

- bad aesthetic impression
- space occupied by static traffic
- poor technical condition of the building
- absence of a unifying element



VIEW OF THE ENTRANCE TO THE COURTYARD BETWEEN THE FACULTY OF MECHANICAL ENGINEERING AND THE FACULTY OF CIVIL ENGINEERING

- bad aesthetic impression
- space occupied by static traffic
- poor technical condition of the building
- insufficient greenery
- no life and space for leisure activities



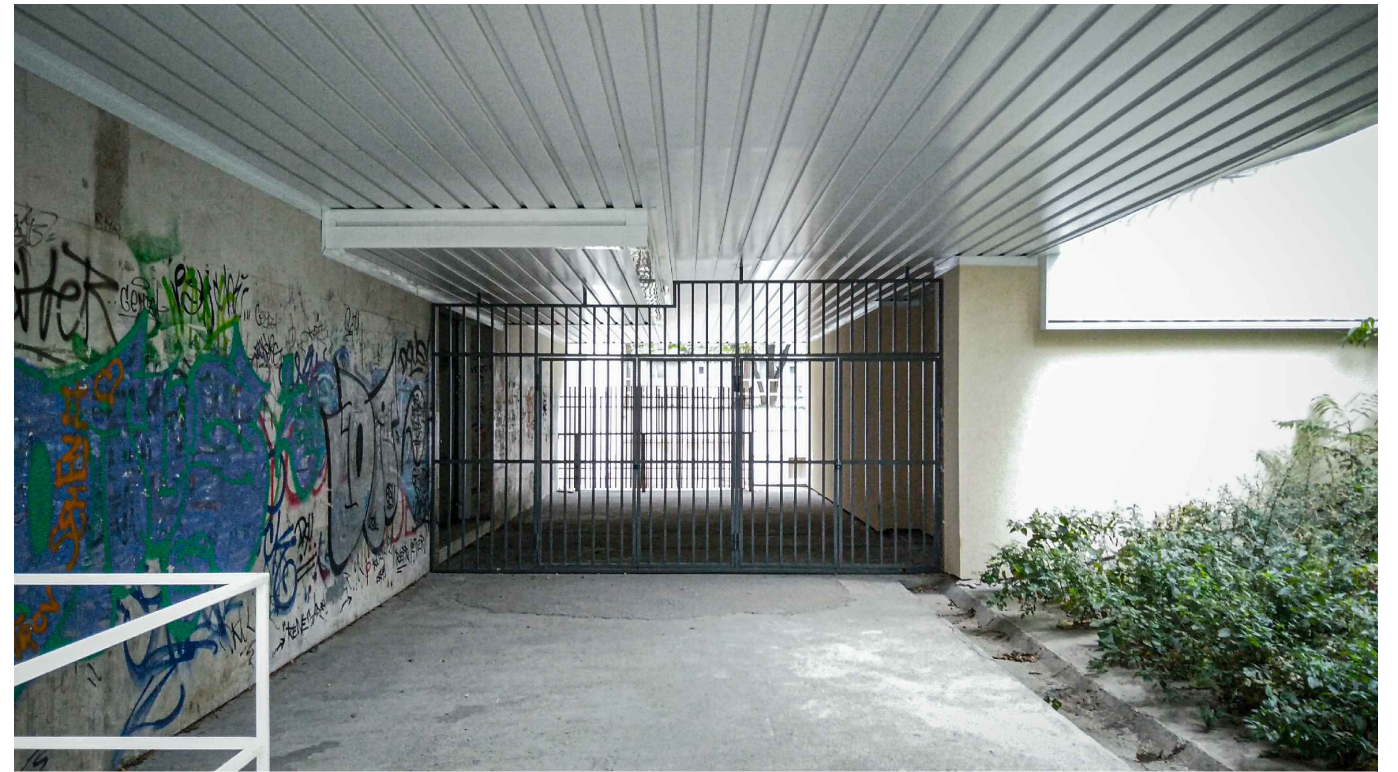
VIEW OF THE ENTRANCE TO THE COURTYARD BETWEEN THE NEW AND THE OLD CHEMISTRY FACULTY

- bad aesthetic impression
- space occupied by static traffic
- absence of a unifying element
- insufficient greenery
- poor openness of the faculties to the public



VIEW OF THE ENTRANCE TO THE COURTYARD BETWEEN THE FACULTY OF CIVIL ENGINEERING AND THE FACULTY OF CHEMISTRY

- unused and closed entrance
- poor openness to the public



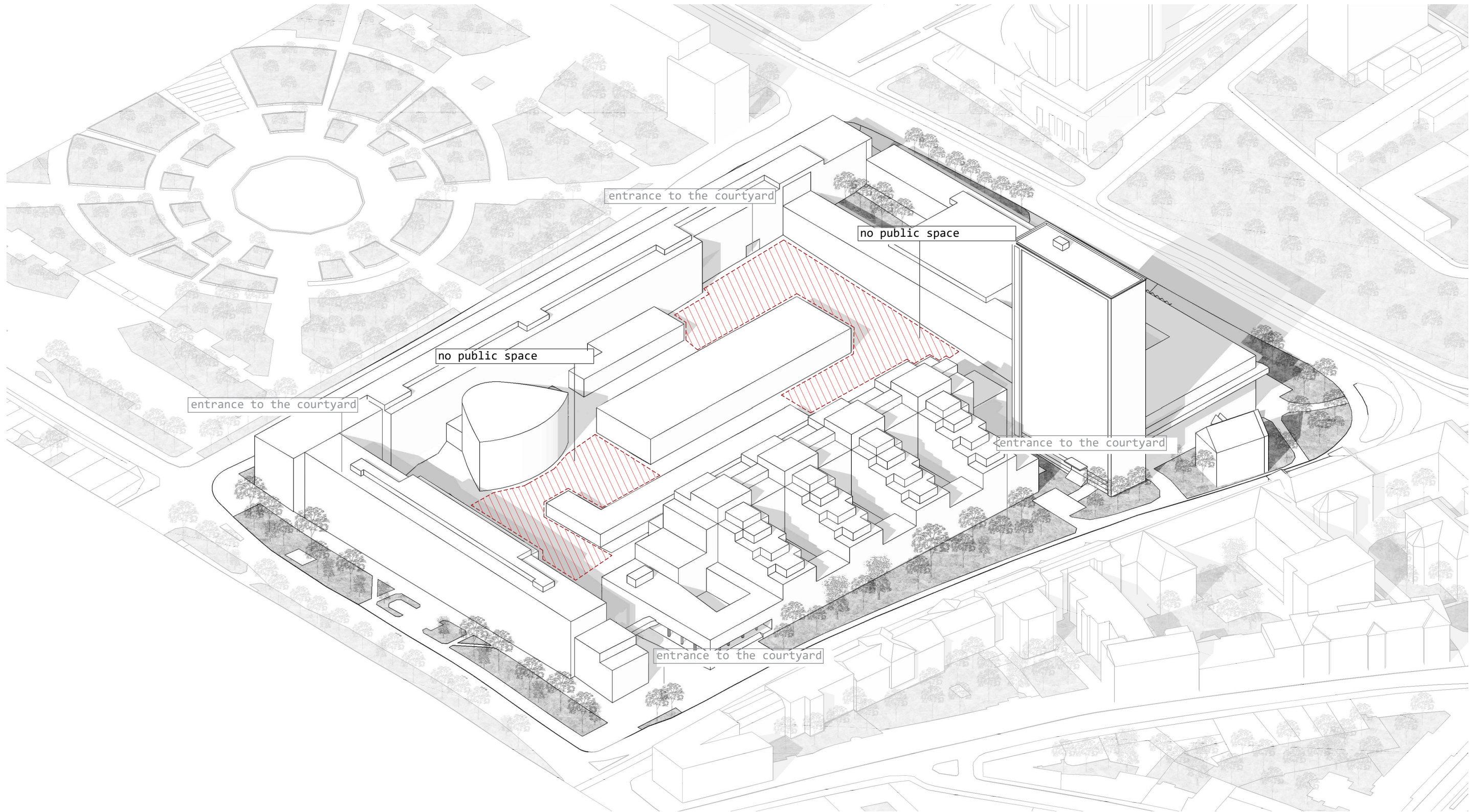
VIEW OF THE ENTRANCE TO THE COURTYARD BETWEEN THE FACULTY OF MECHANICAL ENGINEERING AND THE OLD FACULTY OF CHEMISTRY

- bad aesthetic impression
- unused and closed entrance
- poor openness to the public



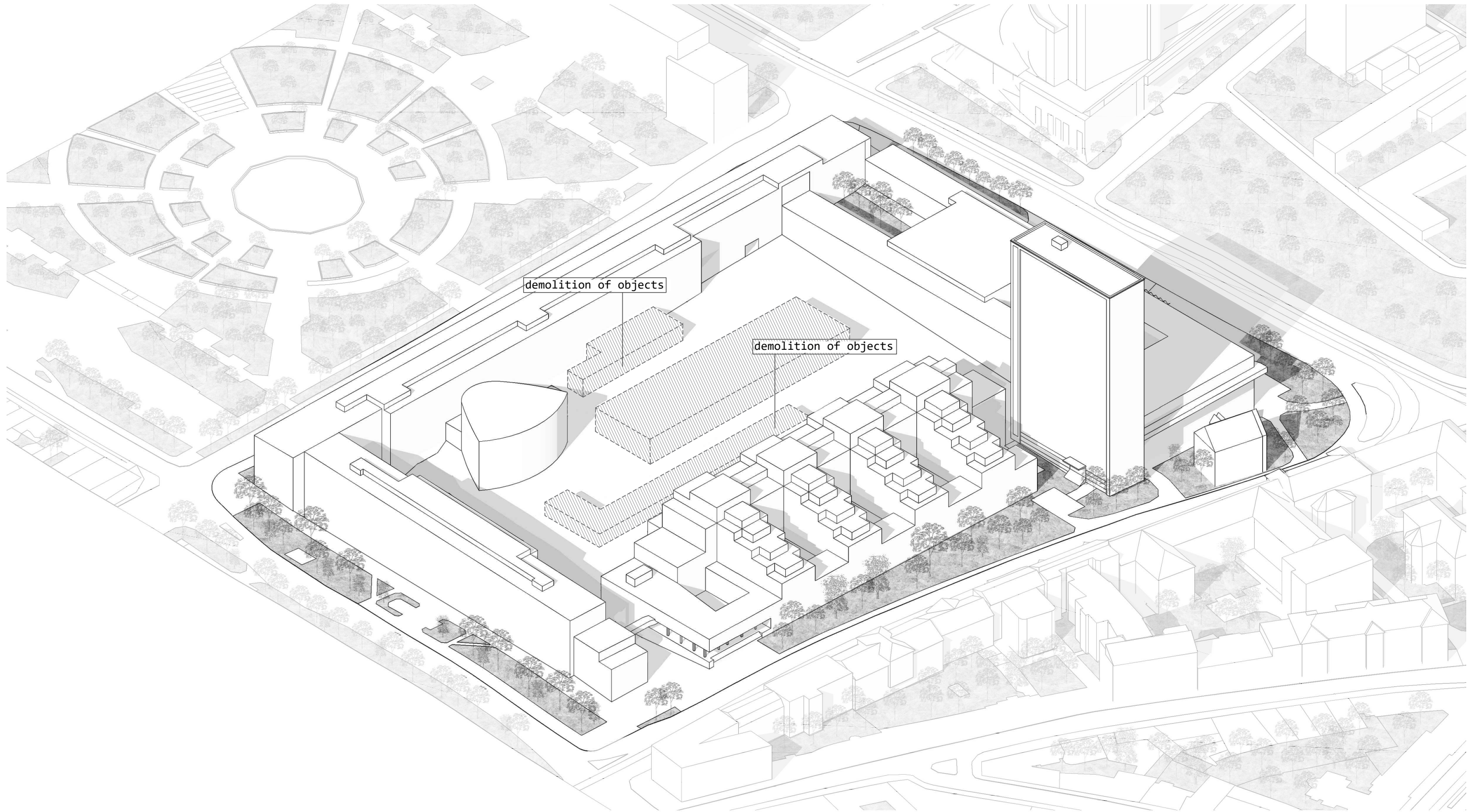


How to create an iconic and representative centre of STU?



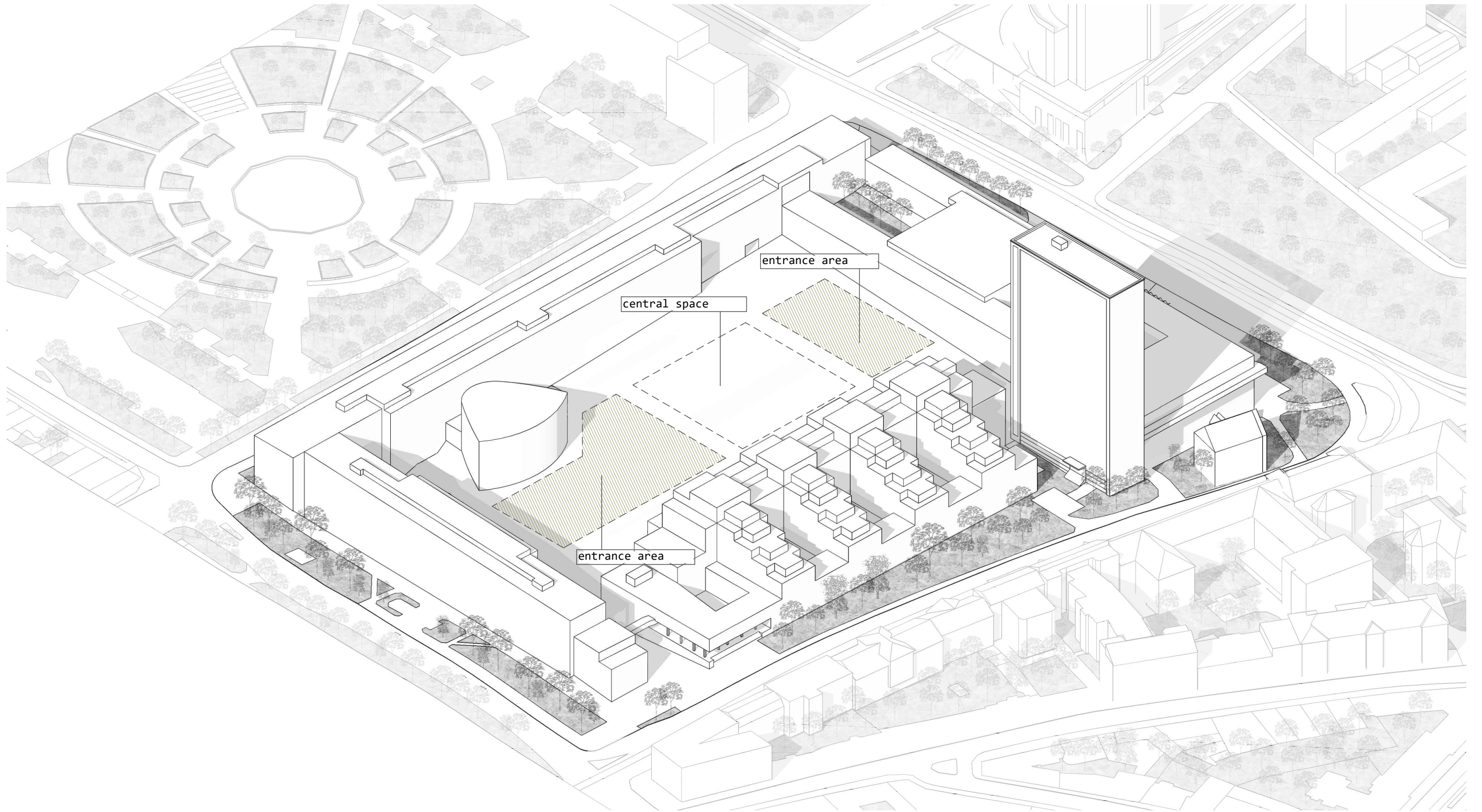
**NO PUBLIC ACCESS**

- the inner block is completely closed to the public, with no life, no space for leisure activities
- space occupied by static traffic, little greenery



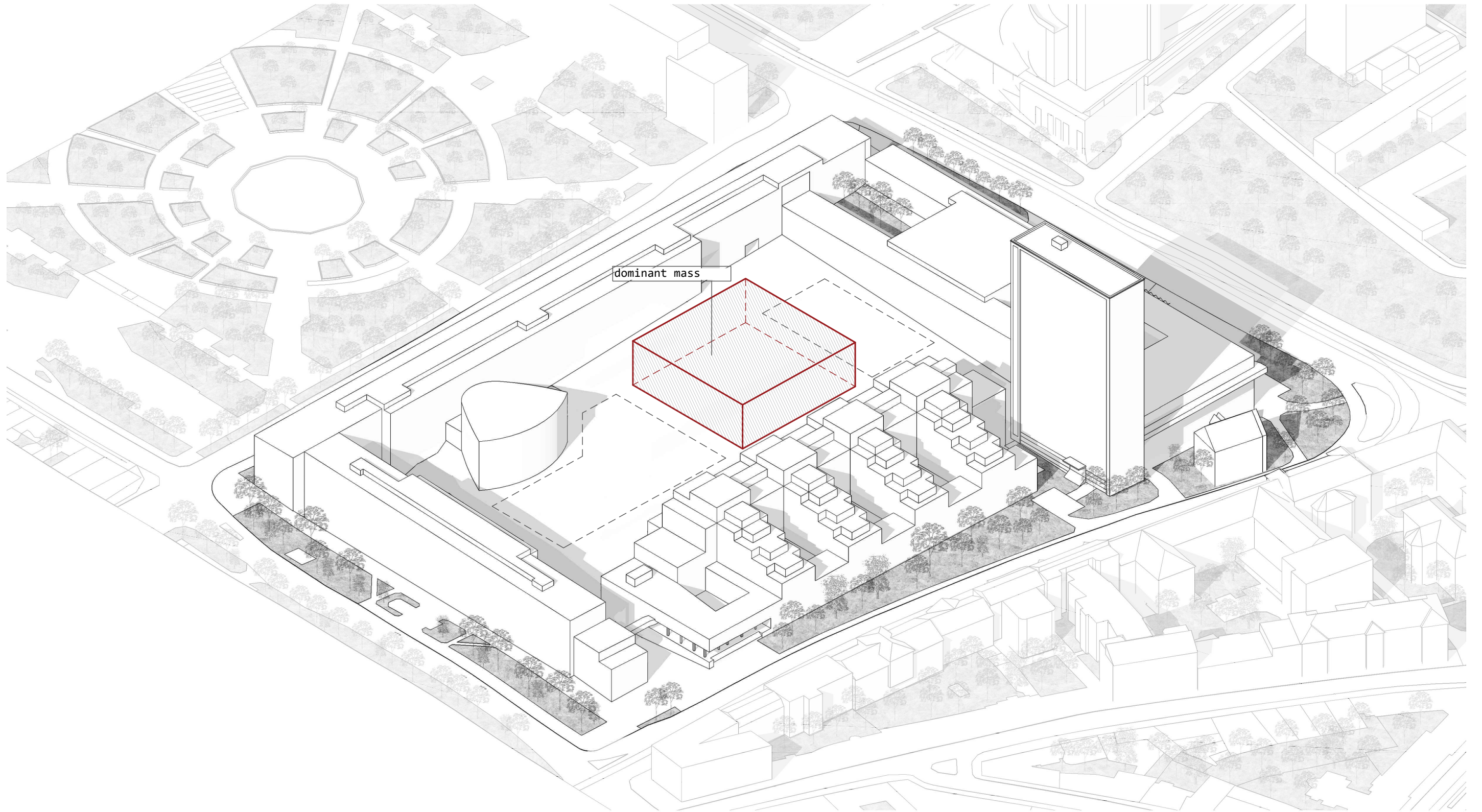
REMEDICATION OF EXISTING BUILDINGS IN THE INNER BLOCK

- poor aesthetic and technical condition of the buildings
- absence of a unifying element
- feeling of fragmentation and enclosure of space



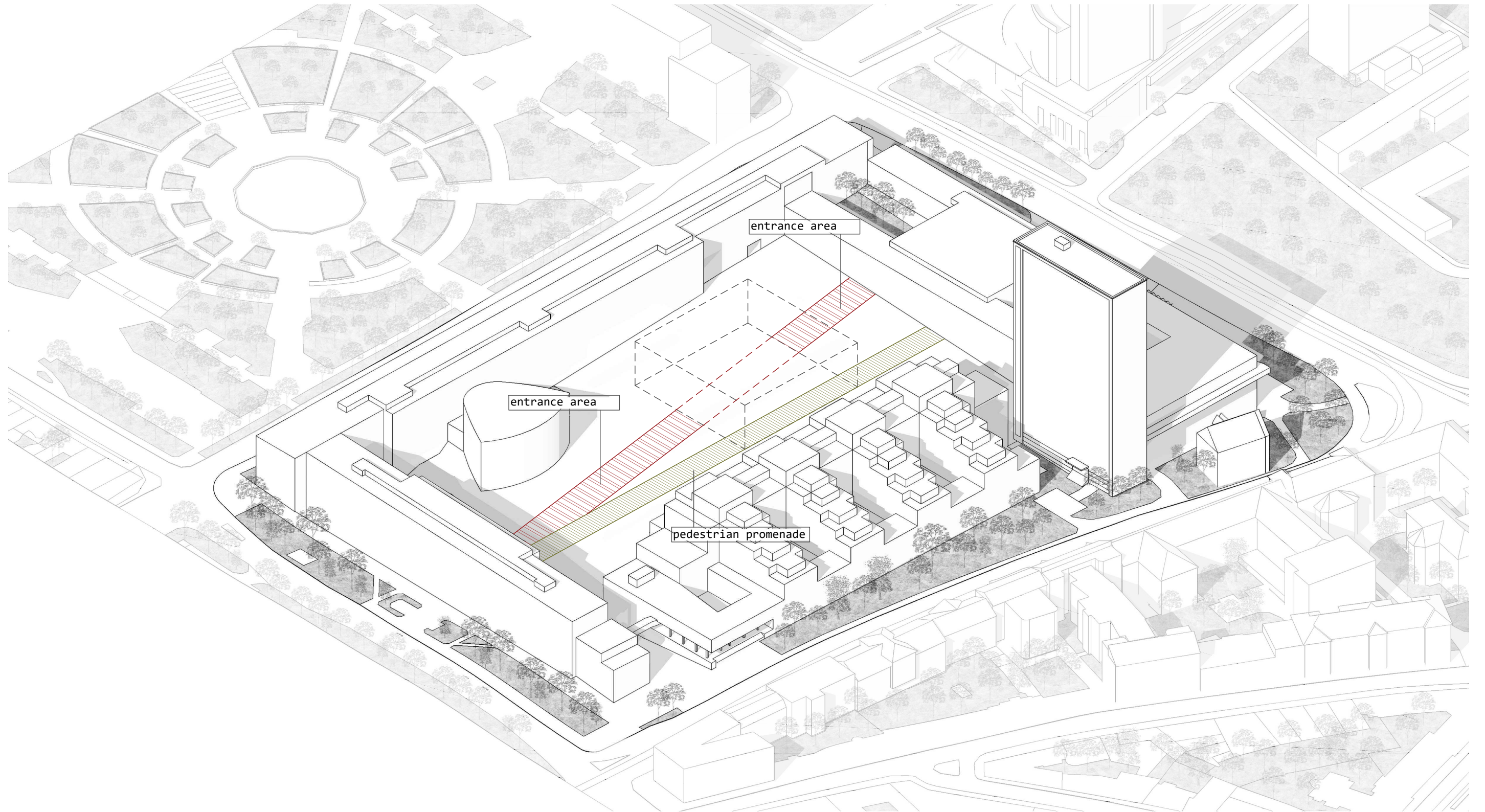
MAXIMUM USE OF THE AREA INSIDE THE BALL

- creation of new boarding spaces
- central space as the new brain of the inner block
- full opening to the public



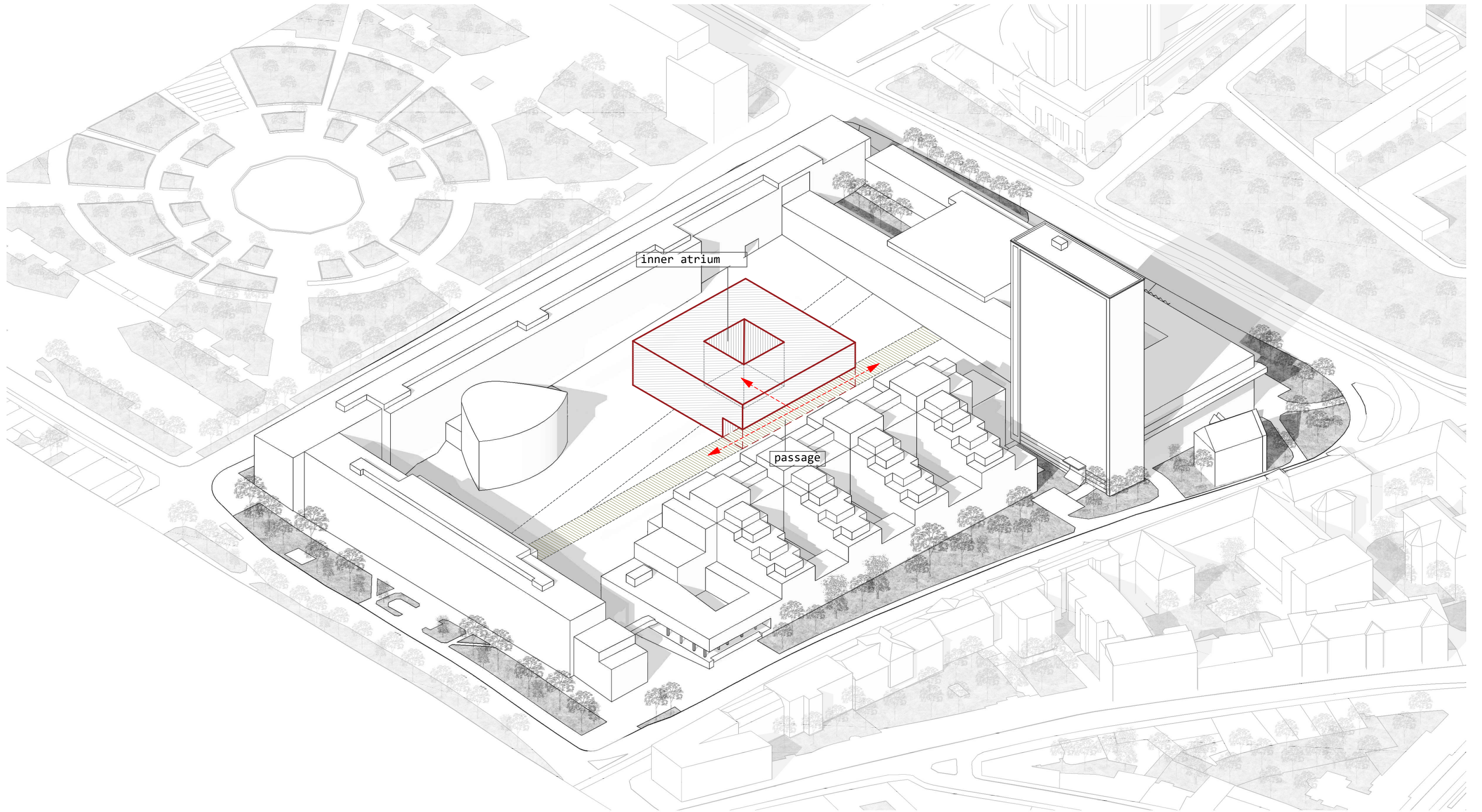
THE OBJECT AS THE NEW BRAIN OF THE INNER BLOCK

- installation of a dominant mass in the central space
- direct definition of the character of the building
- unifying element



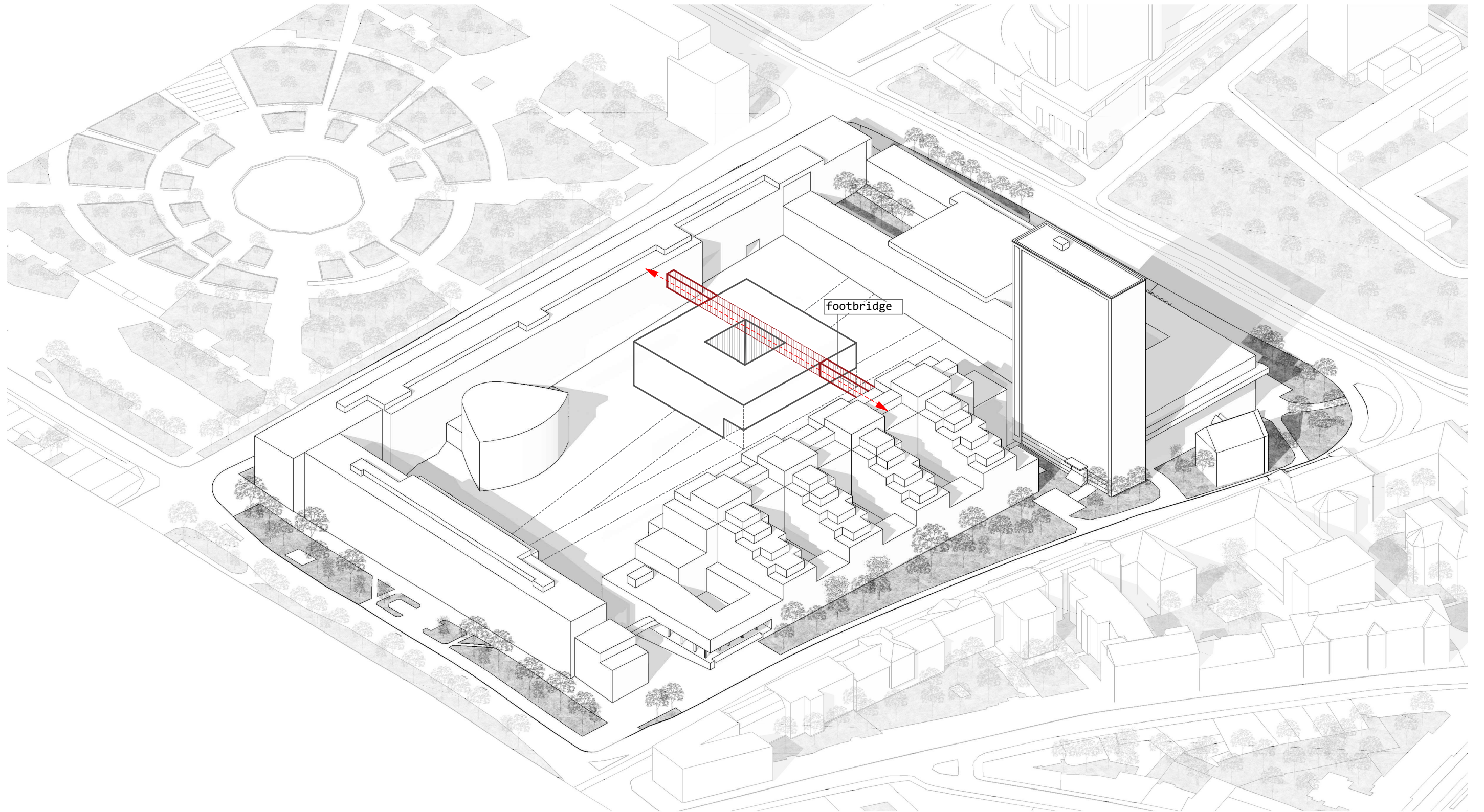
MAIN COMMUNICATION ELEMENTS

- dividing compositional elements that do not disturb the internal environment
- direct connection of the Faculty of Civil Engineering and the Faculty of Chemistry through the promenade
- boarding areas leading directly to the entrance of the building



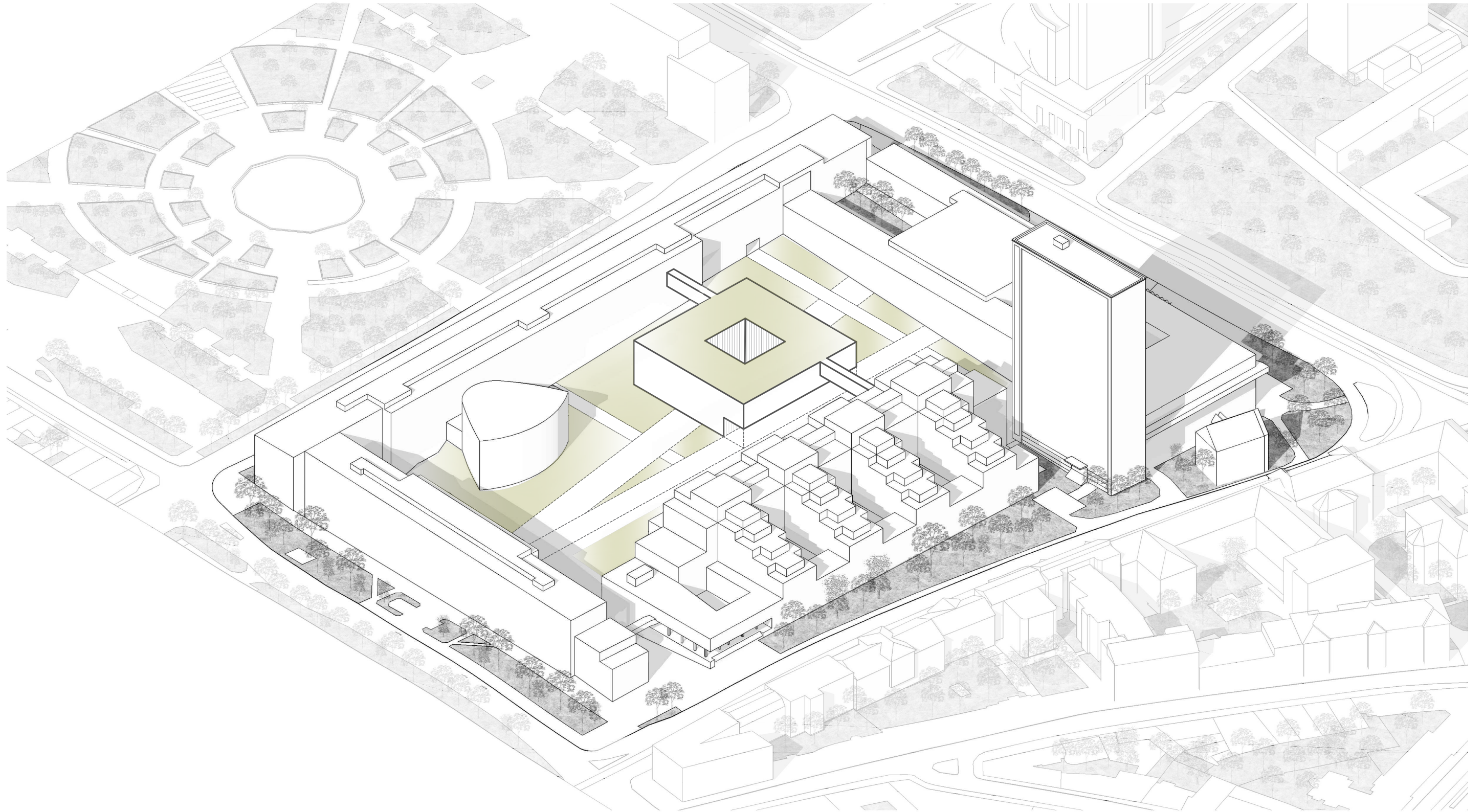
MATERIAL COMPOSITION

- lightening of the mass by internal atrium
- reinforcing the experience and creating a passage through which the promenade passes and functions as a "funnel" inviting the entrance to the atrium



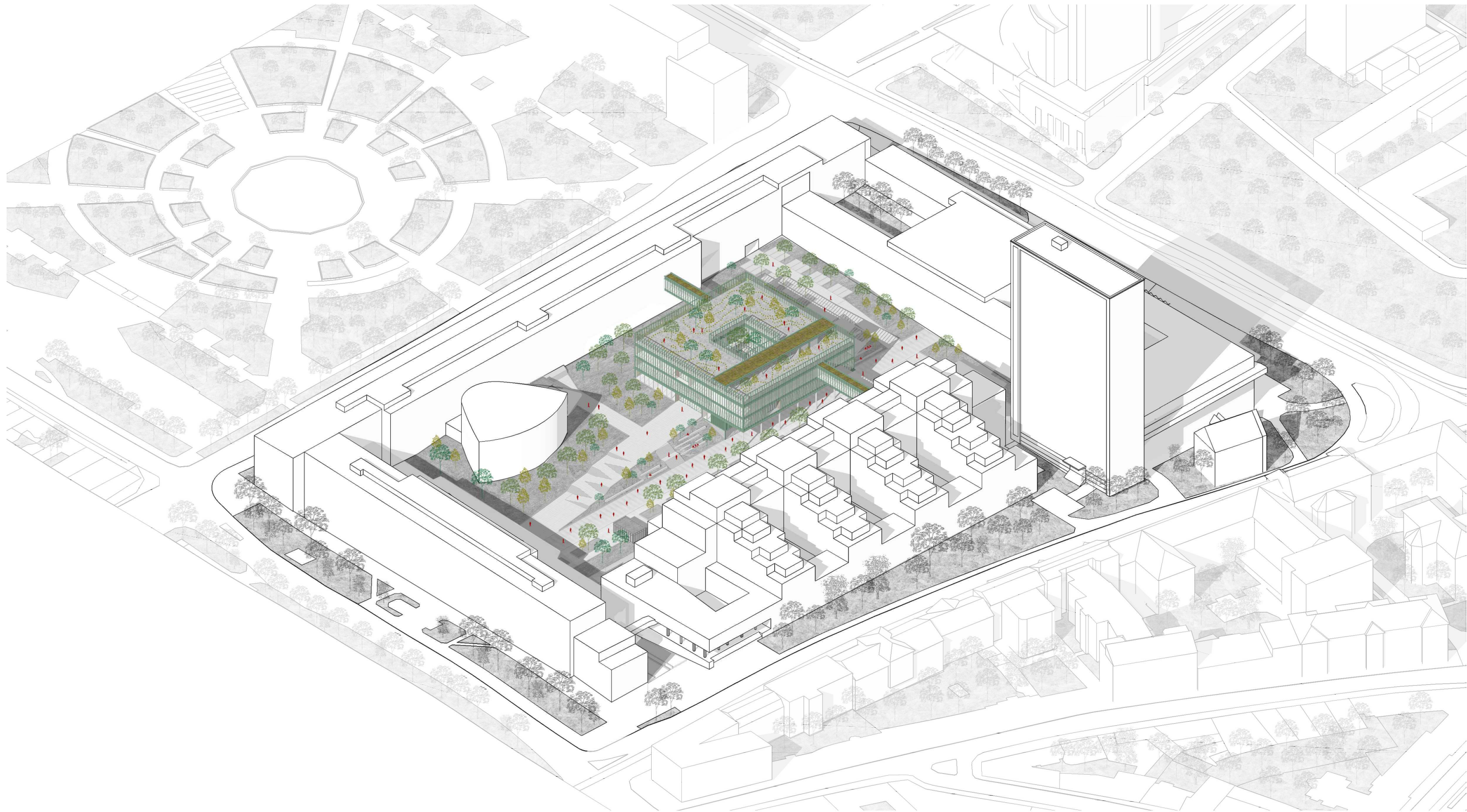
**CONNECTION**

- linking the faculties of engineering and chemistry with a dry foot
- the footbridge is a distinctive part of the architectural and compositional design of the building

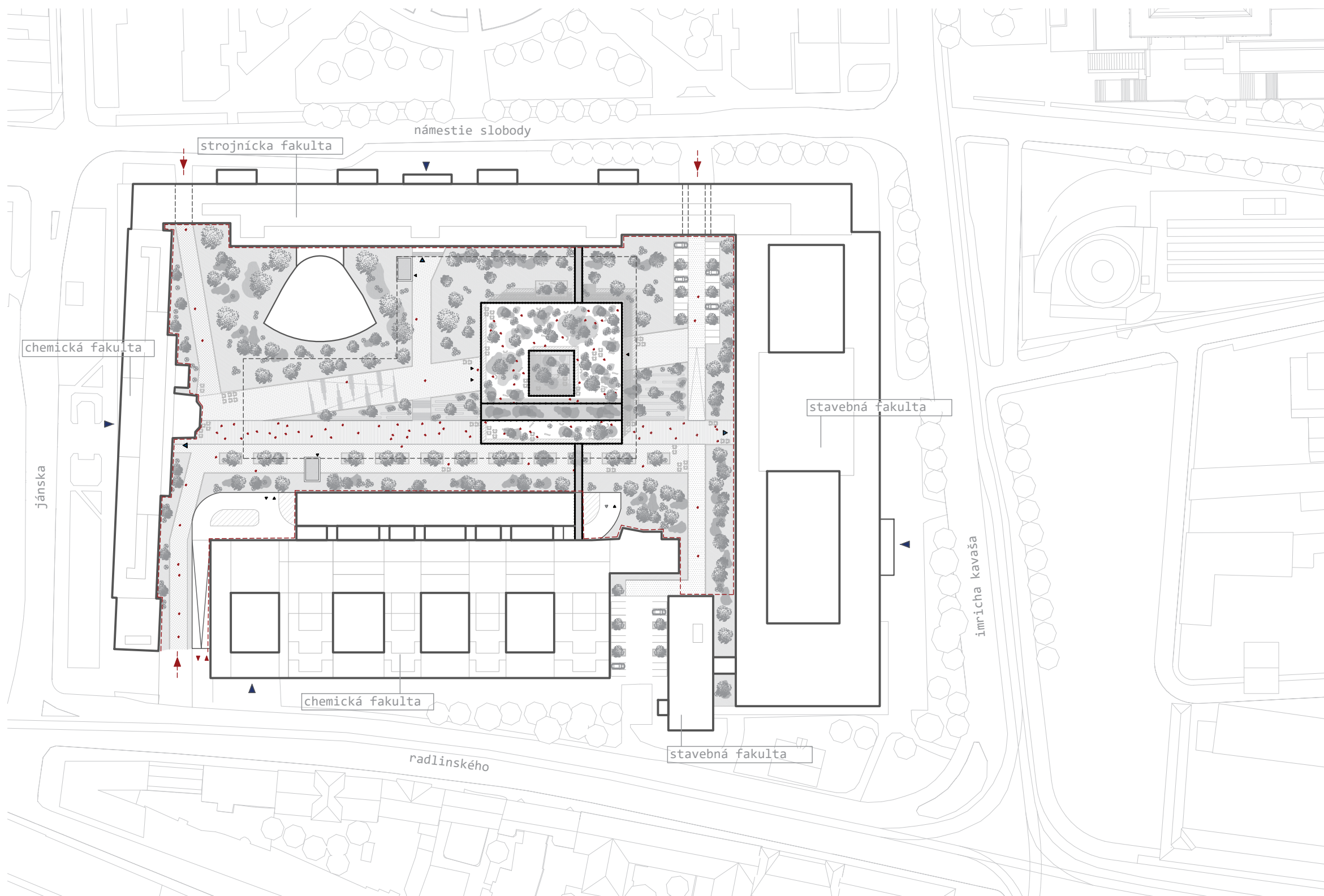


**GREEN**

- maximization of green areas in the courtyard and on the roof of the proposed building
- increase in attractiveness and space for leisure activities



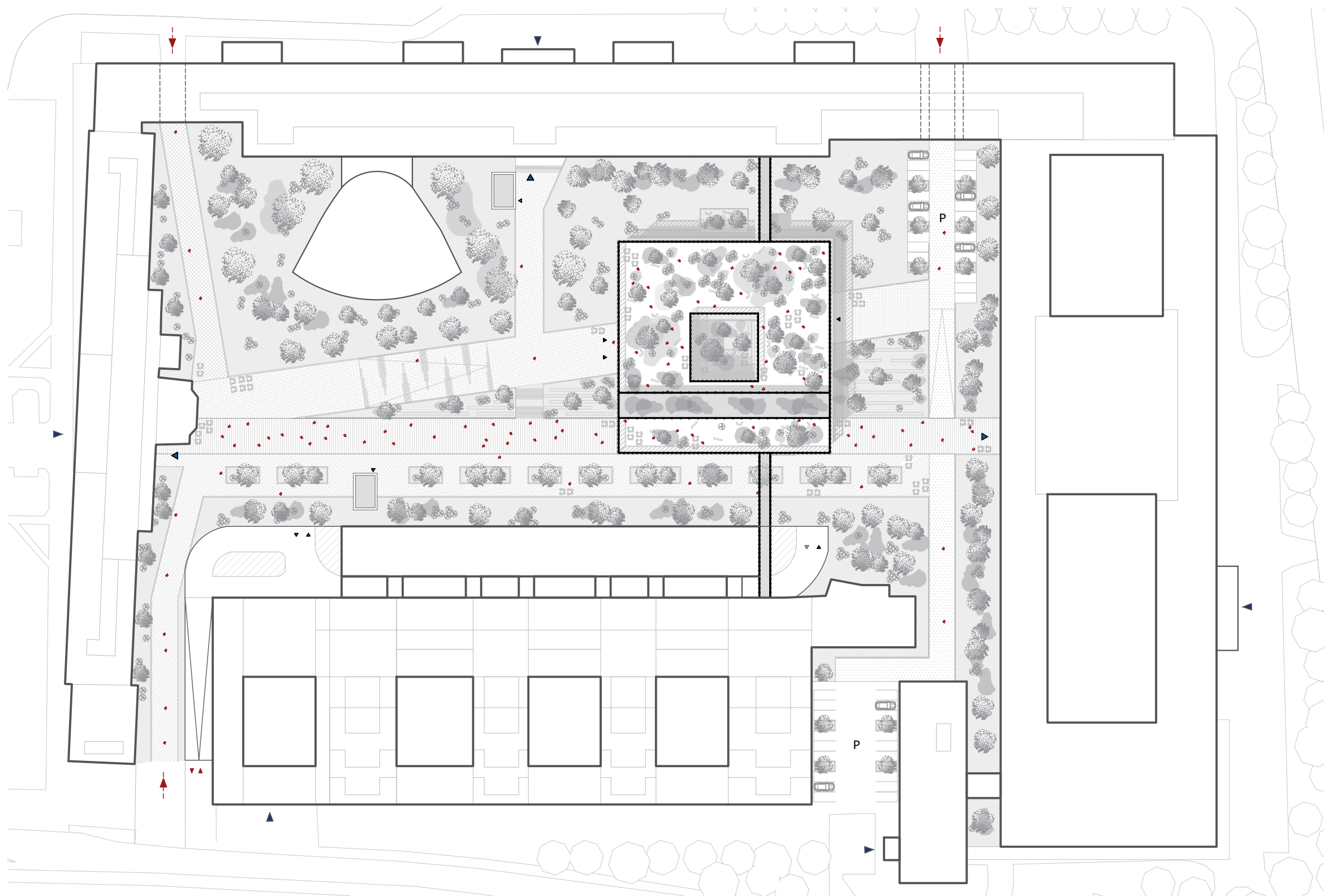
AXONOMETRY



- LEGEND:**
- - - - - addressed area
  - - - - - entrance to the inner block
  - ▲ - faculty entrance
  - ▼▲ - entrance for cars to the garage
  - ▲ - entrance to the designed building
  - ▲ - entrance to the underground garage
  - - - - - border of the underground garage

SITUATION 1:1500





**LEGEND:**

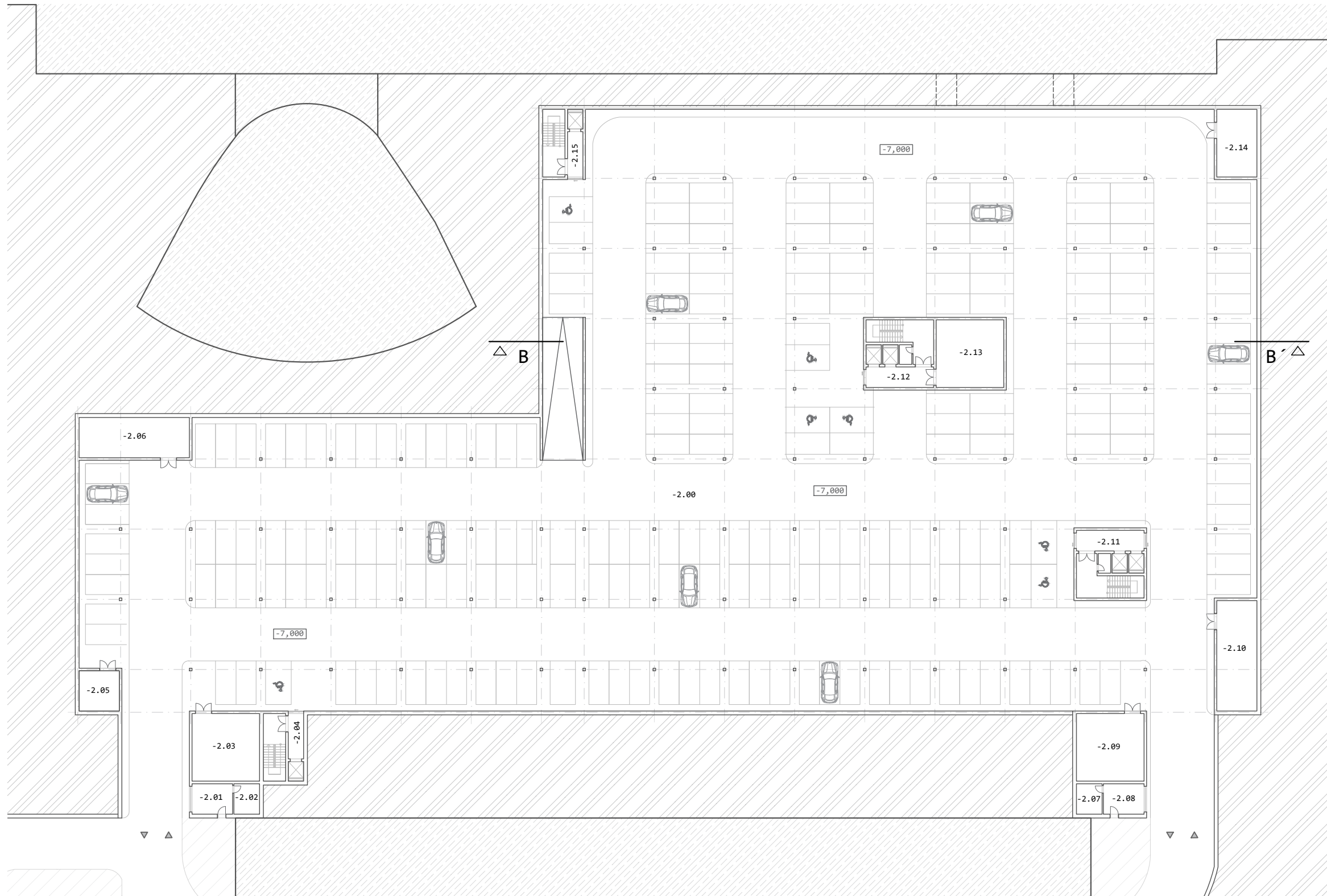
- - - - - addressed area
- > entrance to the inner block
- ▲ faculty entrance
- ▼▲ entrance for cars to the garage
- ▲ entrance to the designed building
- ▲ entrance to the underground garage
- - - - - border of the underground garage

**BILANCE:**

total area .....	19 165 m <sup>2</sup>
built-up area .....	2 540 m <sup>2</sup>
paved areas .....	6 542 m <sup>2</sup>
green areas .....	10 083 m <sup>2</sup>
parking on the ground.....	39

SITUATION 1:1000





**LEGEND:**

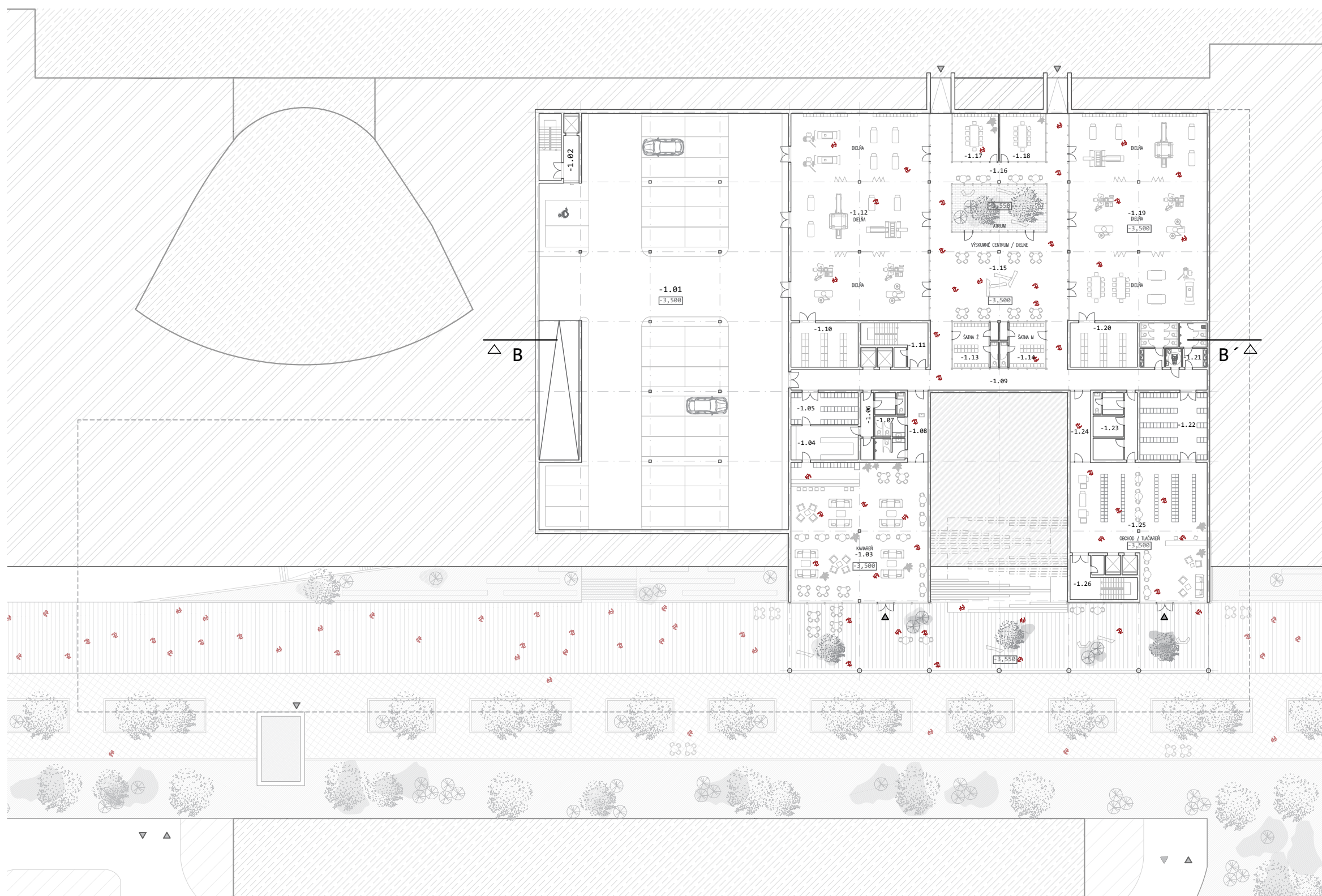
-2.00	garage	7 490 m <sup>2</sup>
-2.01	porter	16,8 m <sup>2</sup>
-2.02	doorman's facilities	10,6 m <sup>2</sup>
-2.03	technical room	62,4 m <sup>2</sup>
-2.04	communication core	37,1 m <sup>2</sup>
-2.05	technical room	22,1 m <sup>2</sup>
-2.06	technical room	60,6 m <sup>2</sup>
-2.07	doorman's facilities	10,6 m <sup>2</sup>
-2.08	porter	16,8 m <sup>2</sup>
-2.09	technical room	62,4 m <sup>2</sup>
-2.10	technical room	60,6 m <sup>2</sup>
-2.11	communication core	62,4 m <sup>2</sup>
-2.12	communication core	62,4 m <sup>2</sup>
-2.13	technical room	62,4 m <sup>2</sup>
-2.14	technical room	37,1 m <sup>2</sup>
-2.15	communication core	37,1 m <sup>2</sup>

**BILANCE:**

total area	.....	8111,4 m <sup>2</sup>
parking	.....	231
imobil	.....	7
	spolu	238

UNDERGROUND GARAGES -2. 1:500





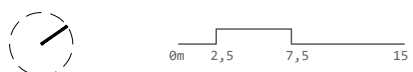
**LEGEND:**

-1.01	garage	1 308 m <sup>2</sup>
-1.02	communication core	37,1 m <sup>2</sup>
-1.03	café	264,1 m <sup>2</sup>
-1.04	preparation room	31,6 m <sup>2</sup>
-1.05	warehouse	29,6 m <sup>2</sup>
-1.06	café background	21,5 m <sup>2</sup>
-1.07	customer toilets	18,3 m <sup>2</sup>
-1.08	corridor	19,7 m <sup>2</sup>
-1.09	corridor	145,2 m <sup>2</sup>
-1.10	warehouse	41,8 m <sup>2</sup>
-1.11	communication core	41,8 m <sup>2</sup>
-1.12	workshop	393,6 m <sup>2</sup>
-1.13	toilets W	29,1 m <sup>2</sup>
-1.14	toilets M	29,1 m <sup>2</sup>
-1.15	living area	165,8 m <sup>2</sup>
-1.16	corridor	94,1 m <sup>2</sup>
-1.17	workshop	30,1 m <sup>2</sup>
-1.18	workshop	30,1 m <sup>2</sup>
-1.19	workshop	393,6 m <sup>2</sup>
-1.20	warehouse	41,1 m <sup>2</sup>
-1.21	toilets	41,1 m <sup>2</sup>
-1.22	warehouse	62,4 m <sup>2</sup>
-1.23	shop background	41,1 m <sup>2</sup>
-1.24	corridor	19,7 m <sup>2</sup>
-1.25	shop / printer	216,5 m <sup>2</sup>
-1.26	communication core	41,1 m <sup>2</sup>

**BILANCE:**

total area	.....	3587,2 m <sup>2</sup>
Parking	.....	34
imobil	.....	1
	spolu	35

FLOOR PLAN -1. 1:500





FLOOR PLAN -1. 1:300

LEGEND:

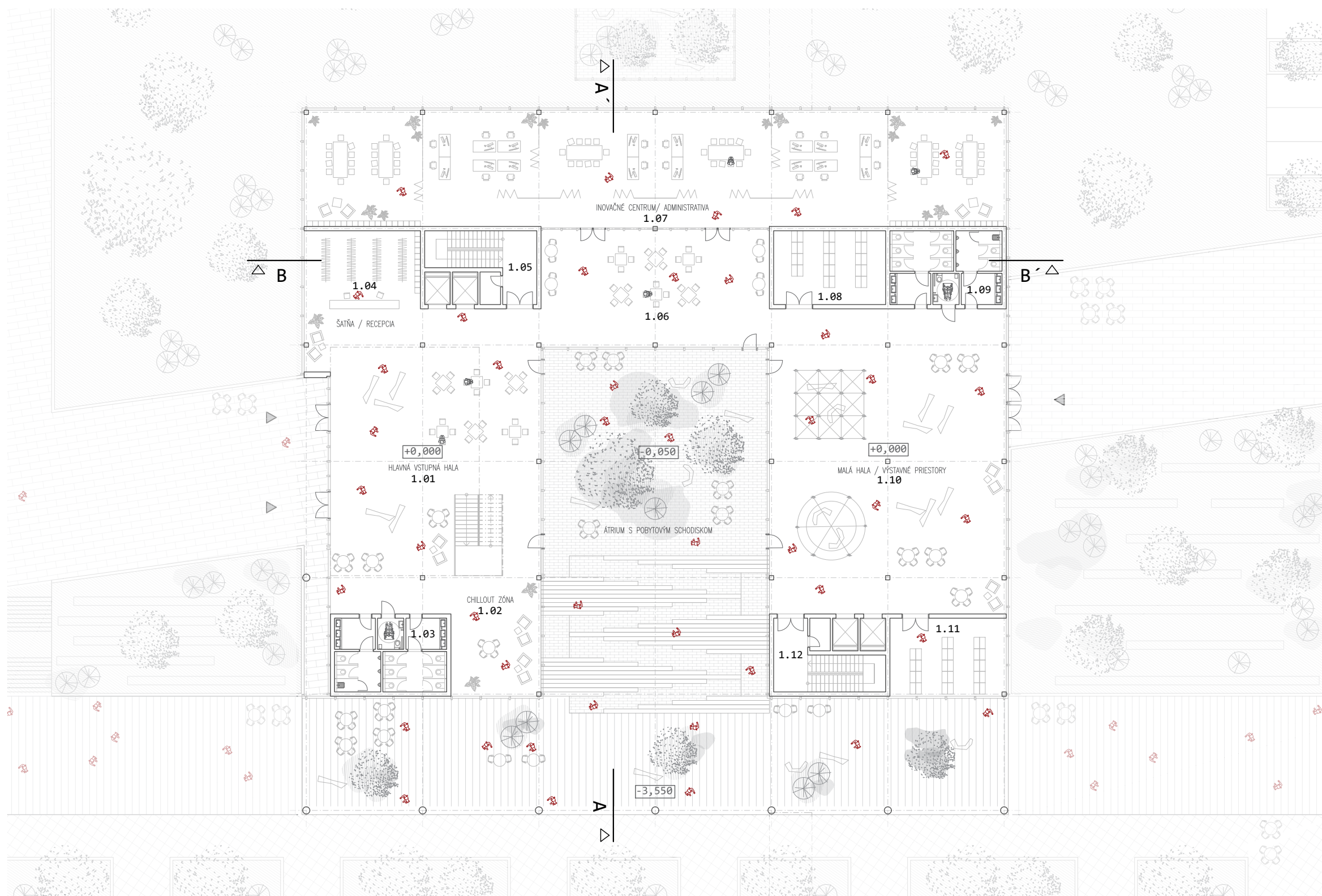
-1.01	garage	1 308 m <sup>2</sup>
-1.02	communication core	37,1 m <sup>2</sup>
-1.03	café	264,1 m <sup>2</sup>
-1.04	preparation room	31,6 m <sup>2</sup>
-1.05	warehouse	29,6 m <sup>2</sup>
-1.06	café background	21,5 m <sup>2</sup>
-1.07	customer toilets	18,3 m <sup>2</sup>
-1.08	corridor	19,7 m <sup>2</sup>
-1.09	corridor	145,2 m <sup>2</sup>
-1.10	warehouse	41,8 m <sup>2</sup>
-1.11	communication core	41,8 m <sup>2</sup>
-1.12	workshop	393,6 m <sup>2</sup>
-1.13	toilets W	29,1 m <sup>2</sup>
-1.14	toilets M	29,1 m <sup>2</sup>
-1.15	living area	165,8 m <sup>2</sup>
-1.16	corridor	94,1 m <sup>2</sup>
-1.17	workshop	30,1 m <sup>2</sup>
-1.18	workshop	30,1 m <sup>2</sup>
-1.19	workshop	393,6 m <sup>2</sup>
-1.20	warehouse	41,1 m <sup>2</sup>
-1.21	toilets	41,1 m <sup>2</sup>
-1.22	warehouse	62,4 m <sup>2</sup>
-1.23	shop background	41,1 m <sup>2</sup>
-1.24	corridor	19,7 m <sup>2</sup>
-1.25	shop / printer	216,5 m <sup>2</sup>
-1.26	communication core	41,1 m <sup>2</sup>

BILANCE:

total area	.....	3587,2 m <sup>2</sup>
Parking	.....	34
imobil	.....	1
	spolu	35



0m 2 6 12



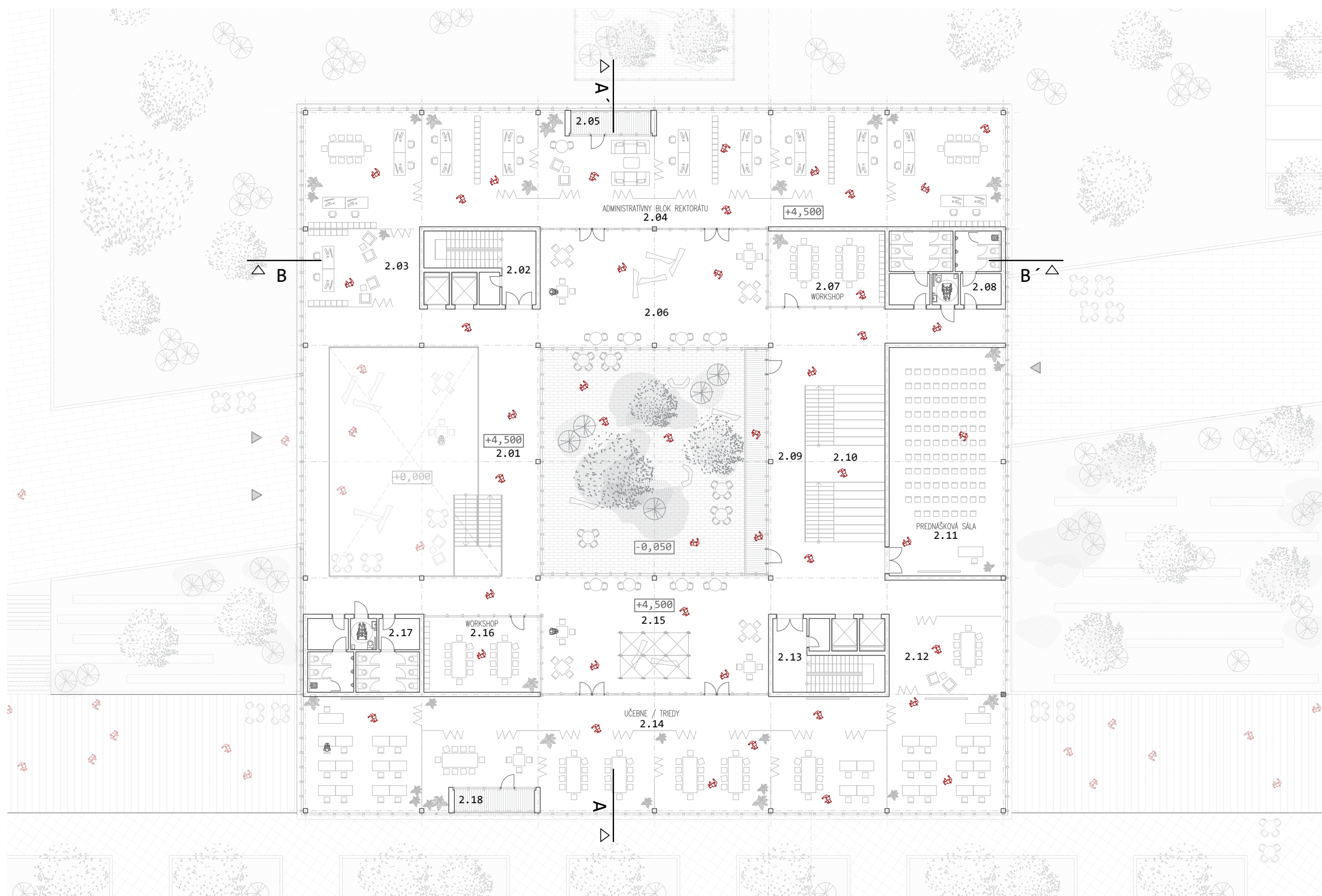
LEGEND:

1.01	entrance hall	332,5 m <sup>2</sup>
1.02	chillout	47,5 m <sup>2</sup>
1.03	toilets	41,1 m <sup>2</sup>
1.04	cloakroom / reception	45,1 m <sup>2</sup>
1.05	communication core	41,1 m <sup>2</sup>
1.06	living area	132,1 m <sup>2</sup>
1.07	innovation centre	405,9 m <sup>2</sup>
1.08	warehouse	41,8 m <sup>2</sup>
1.09	toilets	41,1 m <sup>2</sup>
1.10	hall / exhibitions	359,1 m <sup>2</sup>
1.11	warehouse	45,1 m <sup>2</sup>
1.12	communication core	41,1 m <sup>2</sup>
	atrium + stairs	394,5 m <sup>2</sup>

total area	.....	1573,5 m <sup>2</sup>
+ atrium/stairs	.....	1968,2 m <sup>2</sup>

FLOOR PLAN +1. 1:300





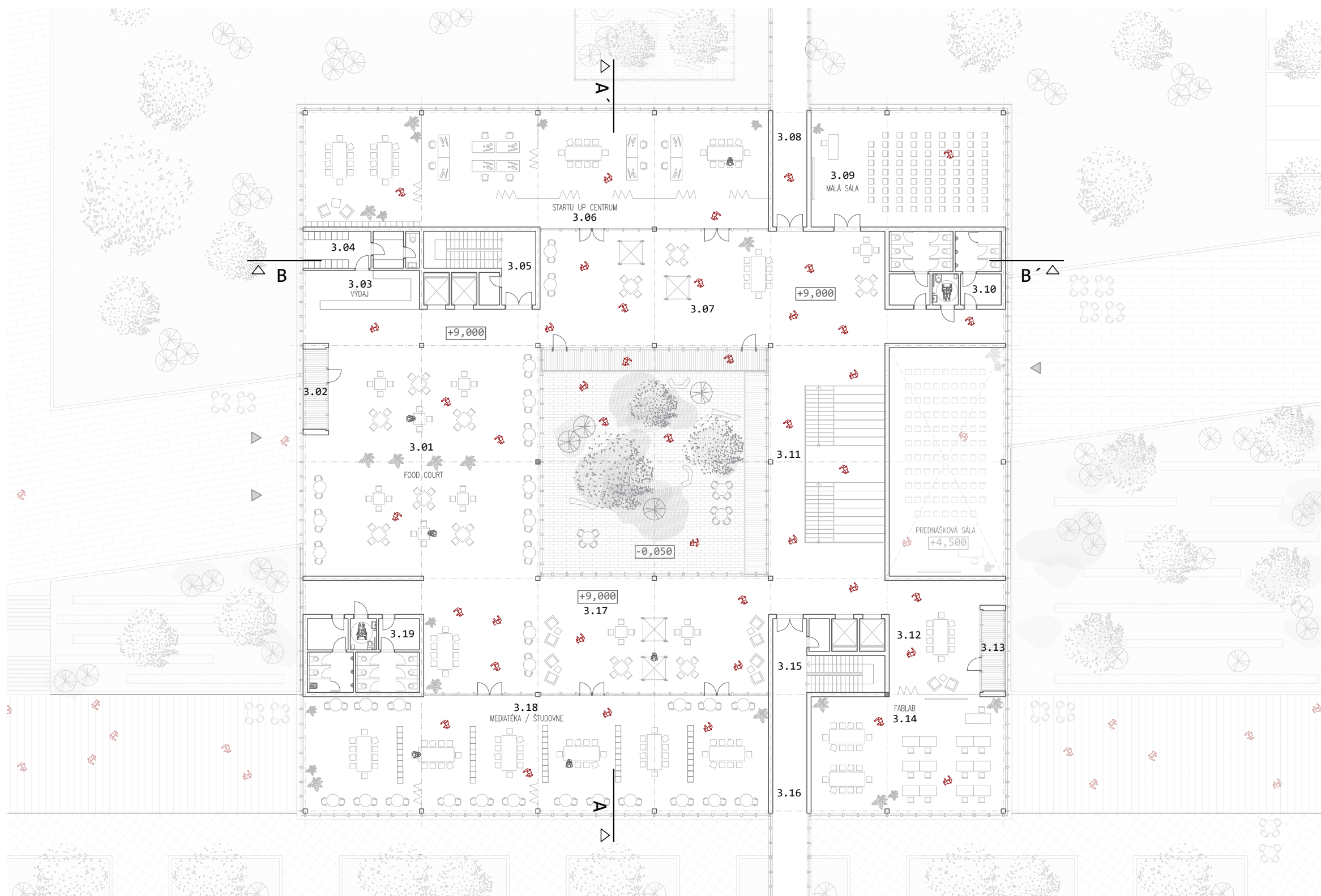
LEGEND:

2.01	hall	180,2 m <sup>2</sup>
2.02	communication core	41,8 m <sup>2</sup>
2.03	secretariat	405,9 m <sup>2</sup>
2.04	Rector's offices	45,1 m <sup>2</sup>
2.05	loggia	9,6 m <sup>2</sup>
2.06	living area	130,8 m <sup>2</sup>
2.07	workshop	43,4 m <sup>2</sup>
2.08	toilets	41,1 m <sup>2</sup>
2.09	corridor	217,2 m <sup>2</sup>
2.10	public stairs	62,1 m <sup>2</sup>
2.11	lecture hall	132,1 m <sup>2</sup>
2.12	classroom	45,1 m <sup>2</sup>
2.13	communication core	41,8 m <sup>2</sup>
2.14	classrooms	405,9 m <sup>2</sup>
2.15	living area	130,8 m <sup>2</sup>
2.16	workshop	43,4 m <sup>2</sup>
2.17	toilets	41,1 m <sup>2</sup>
2.18	loggia	9,6 m <sup>2</sup>
	balcony	24,6 m <sup>2</sup>

total area ..... 2027,3 m<sup>2</sup>

FLOOR PLAN 2. 1:300





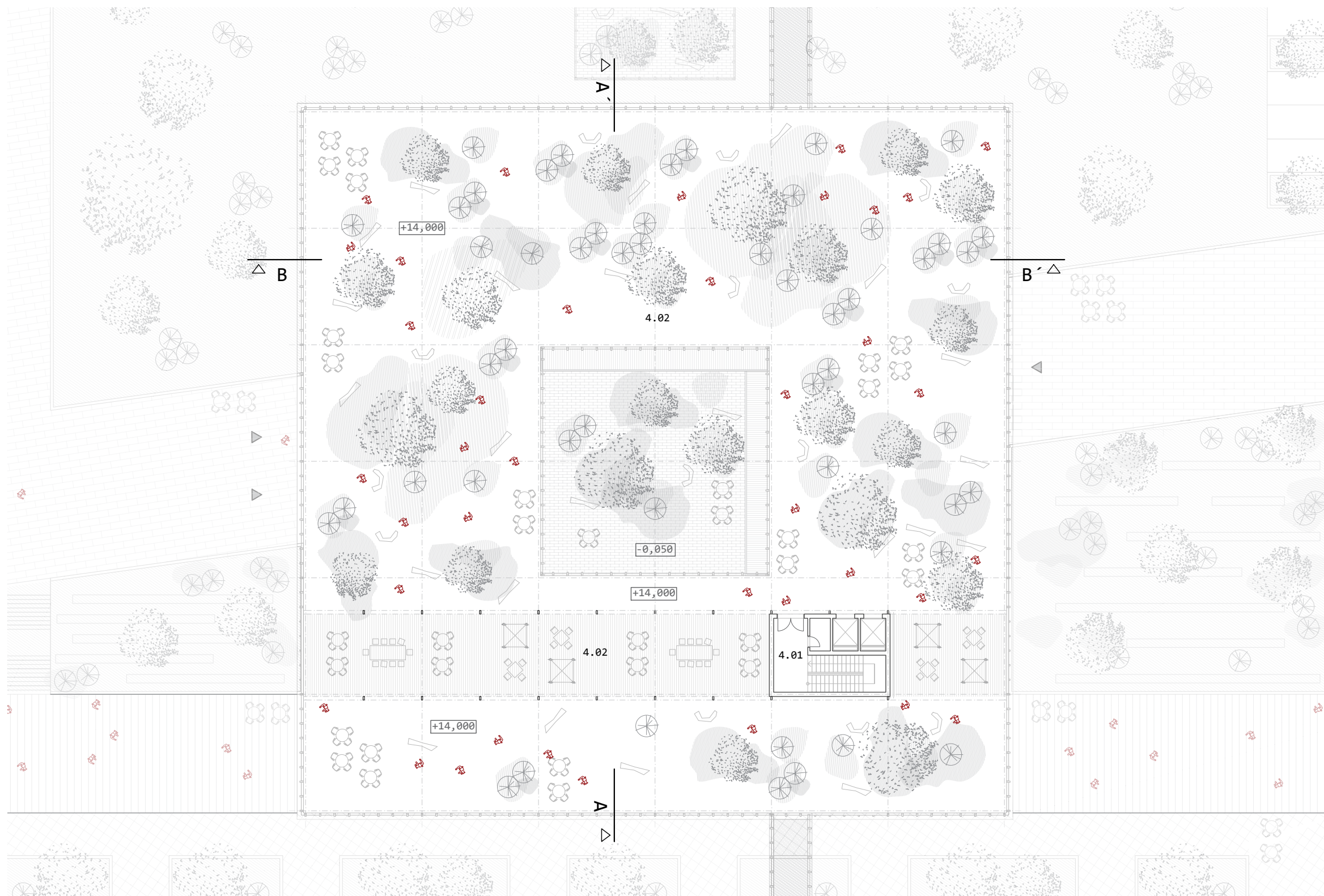
LEGENDA:

3.01	food court	302,4 m <sup>2</sup>
3.02	loggia	9,6 m <sup>2</sup>
3.03	food dispensing	22,5 m <sup>2</sup>
3.04	kitchen facilities	21,3 m <sup>2</sup>
3.05	communication core	41,8 m <sup>2</sup>
3.06	start up center	272,2 m <sup>2</sup>
3.07	living area	199,2 m <sup>2</sup>
3.08	footbridge	67,9 m <sup>2</sup>
3.09	small hall	112,2 m <sup>2</sup>
3.10	toilets	41,1 m <sup>2</sup>
3.11	corridor	148,5 m <sup>2</sup>
3.12	classroom	40,3 m <sup>2</sup>
3.13	loggia	9,6 m <sup>2</sup>
3.14	fablab	112,2 m <sup>2</sup>
3.15	communication core	130,8 m <sup>2</sup>
3.16	footbridge	101,6 m <sup>2</sup>
3.17	living area	199,2 m <sup>2</sup>
3.18	media room	272,2 m <sup>2</sup>
3.19	toilets	41,1 m <sup>2</sup>
	balcony	24,6 m <sup>2</sup>
	total area	2145,8 m <sup>2</sup>

FLOOR PLAN 3. 1:300



0m 2 6 12



LEGEND:

4.01	communication core	41,8 m <sup>2</sup>
4.02	covered terrace	244,9 m <sup>2</sup>
4.03	public roof	1903,9 m <sup>2</sup>

total area ..... 2027,3 m<sup>2</sup>

FLOOR PLAN 4. 1:300





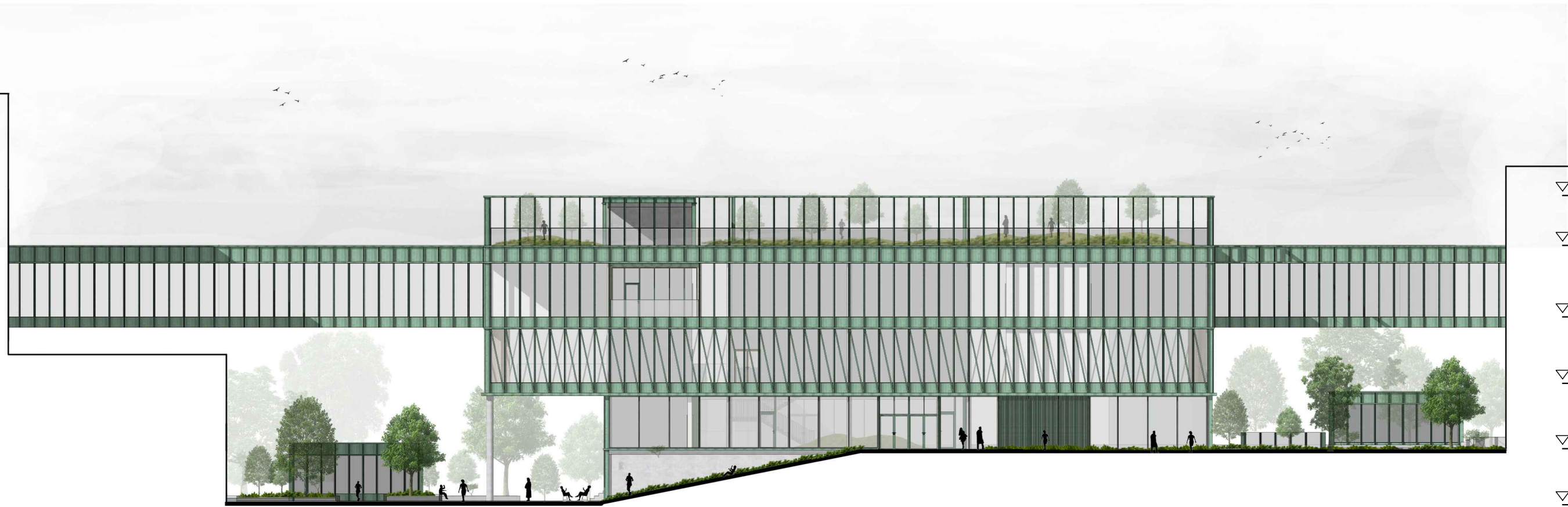
SECTION A-A' 1:300





SECTION B-B' 1:300

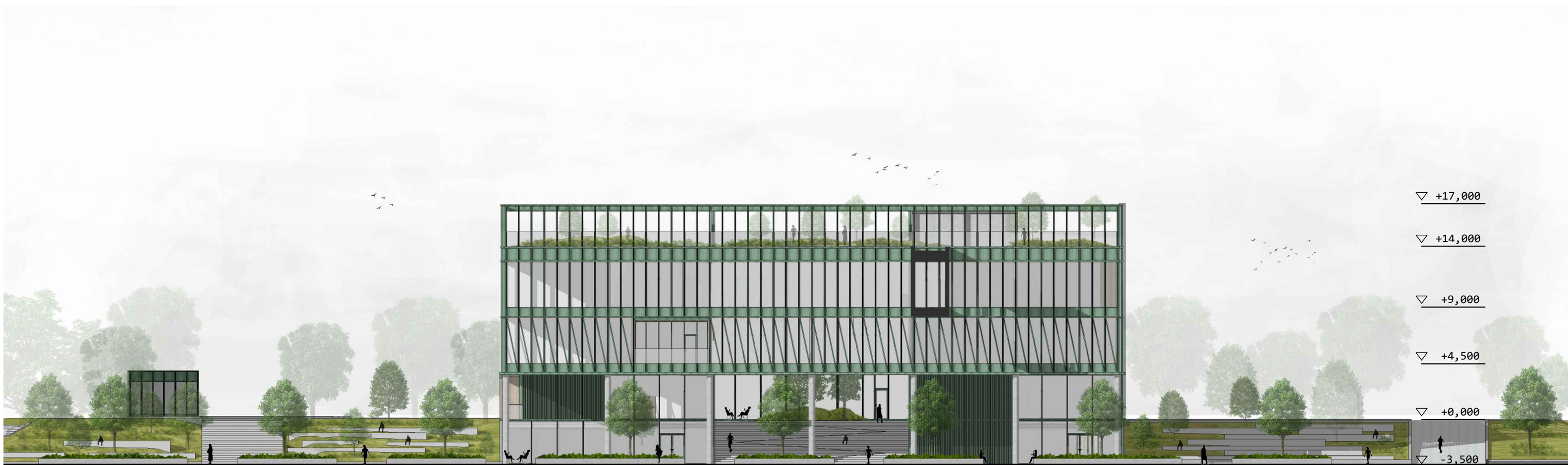




- ▽ +17,000
- ▽ +14,000
- ▽ +9,000
- ▽ +4,500
- ▽ +0,000
- ▽ -3,500

NORTHEAST VIEW 1:300

0m 2 6 12



SOUTHEAST VIEW 1:300





SOUTHWEST VIEW 1:300

0m 2 6 12



NORTHWEST VIEW 1:300

