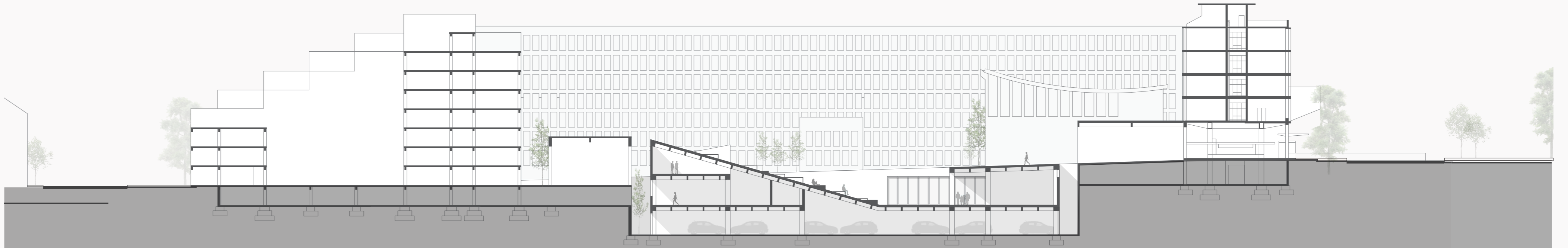
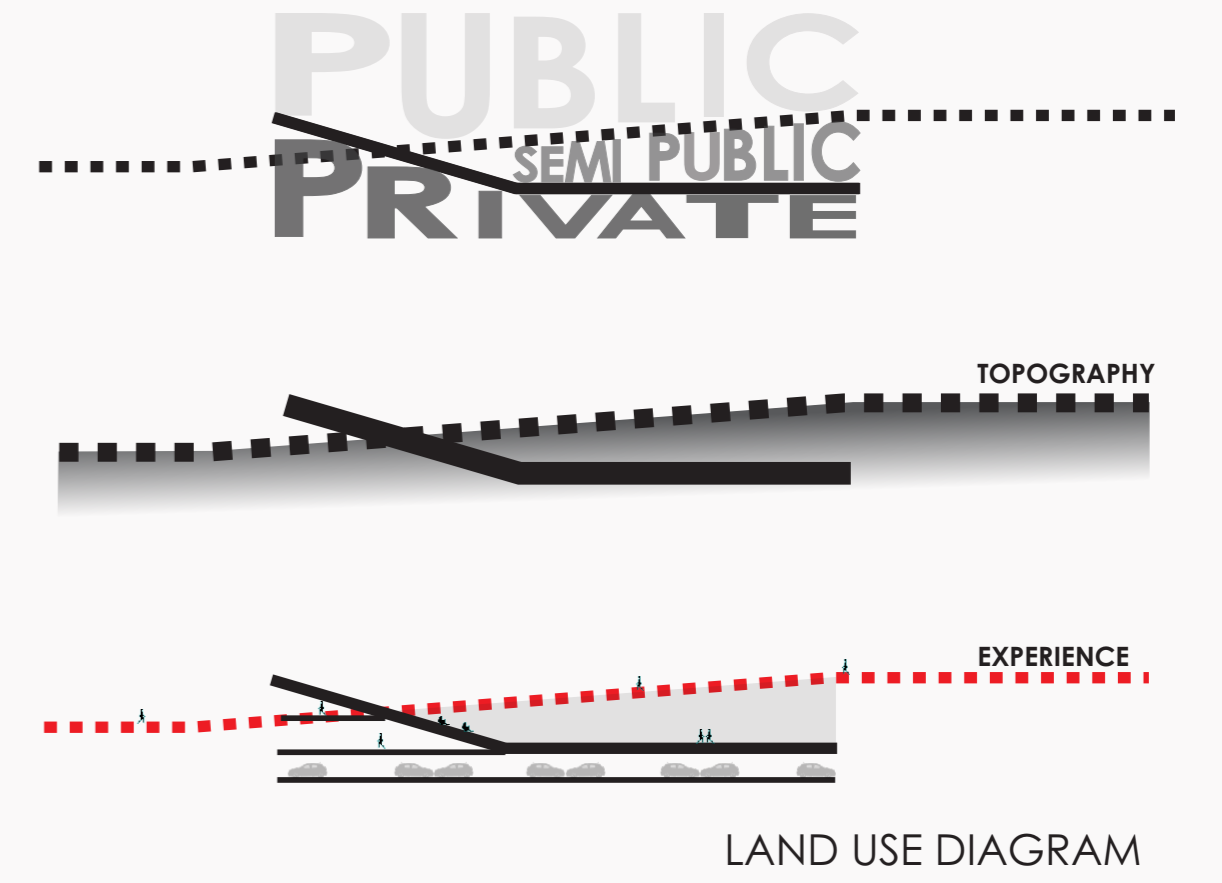


SITE LOCATION PLAN

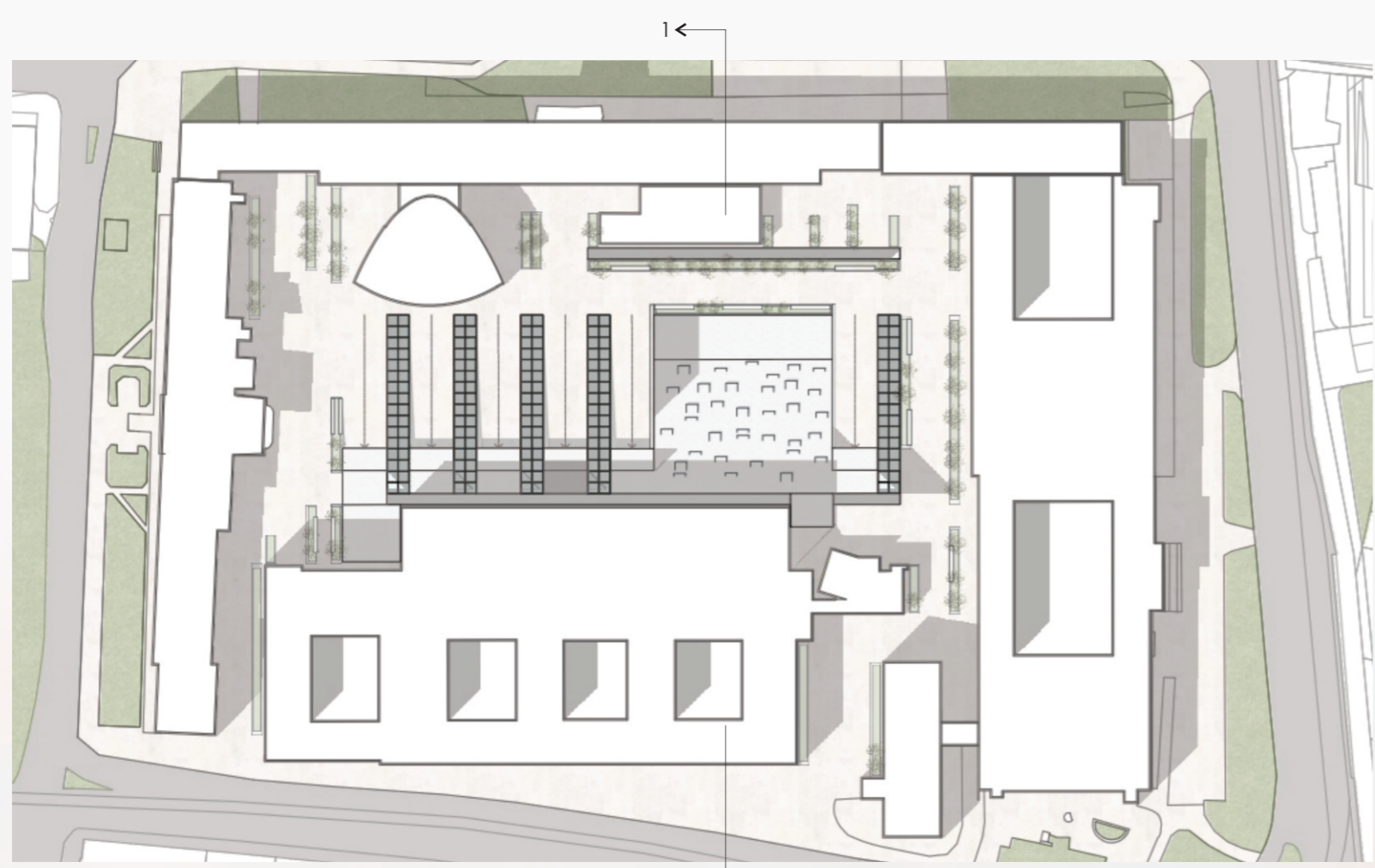
The idea of the project was born from the existing tunnels in the city, which were created during the Second World War as military emergency shelters. At the end of the war, they abandoned their function and years later they were re-functionalized, creating bars, pubs, public baths, etc.

The STU project seeks to connect the city and the four faculties of the property. The concept of tunnels and shelters are recreated in routes and enclosures spaces that will serve the different activities of the program's needs.

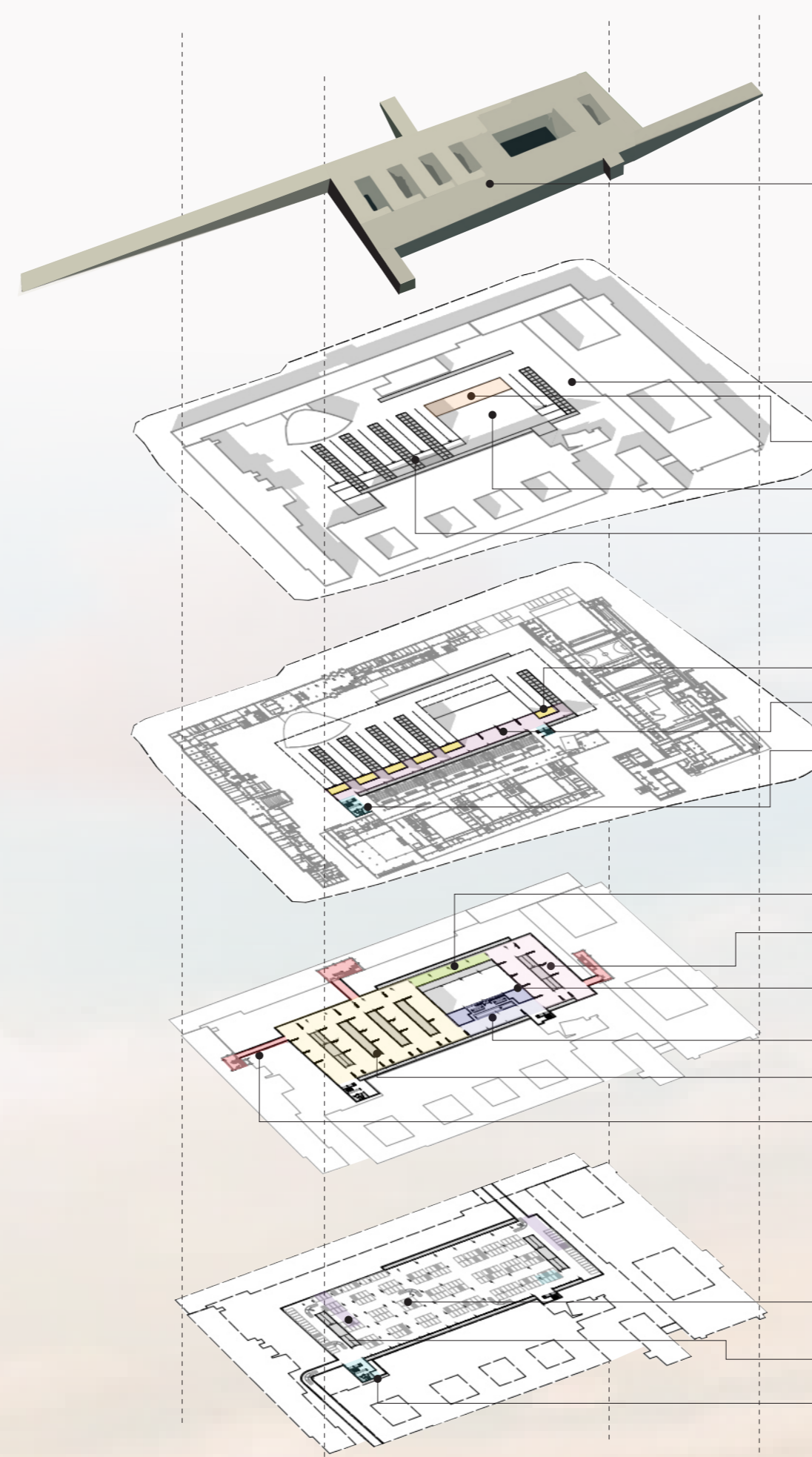
In turn, the materiality will accompany the concept, for this we will use heavy materials, exposed concrete and masonry. The building will be completely buried, it will ventilate and it will be basked by rays of light.



SECTION 1-1



BLOCK PLAN



**ZONNING**

**MODEL**  
Underground building

**COURTAYRD PLAN**

Square  
Courtyard  
Amphitheater  
Skylights

**GROUND FLOOR PLAN**

Entry  
Exhibition area  
Vertical circulation

**LEVEL -1 PLAN**

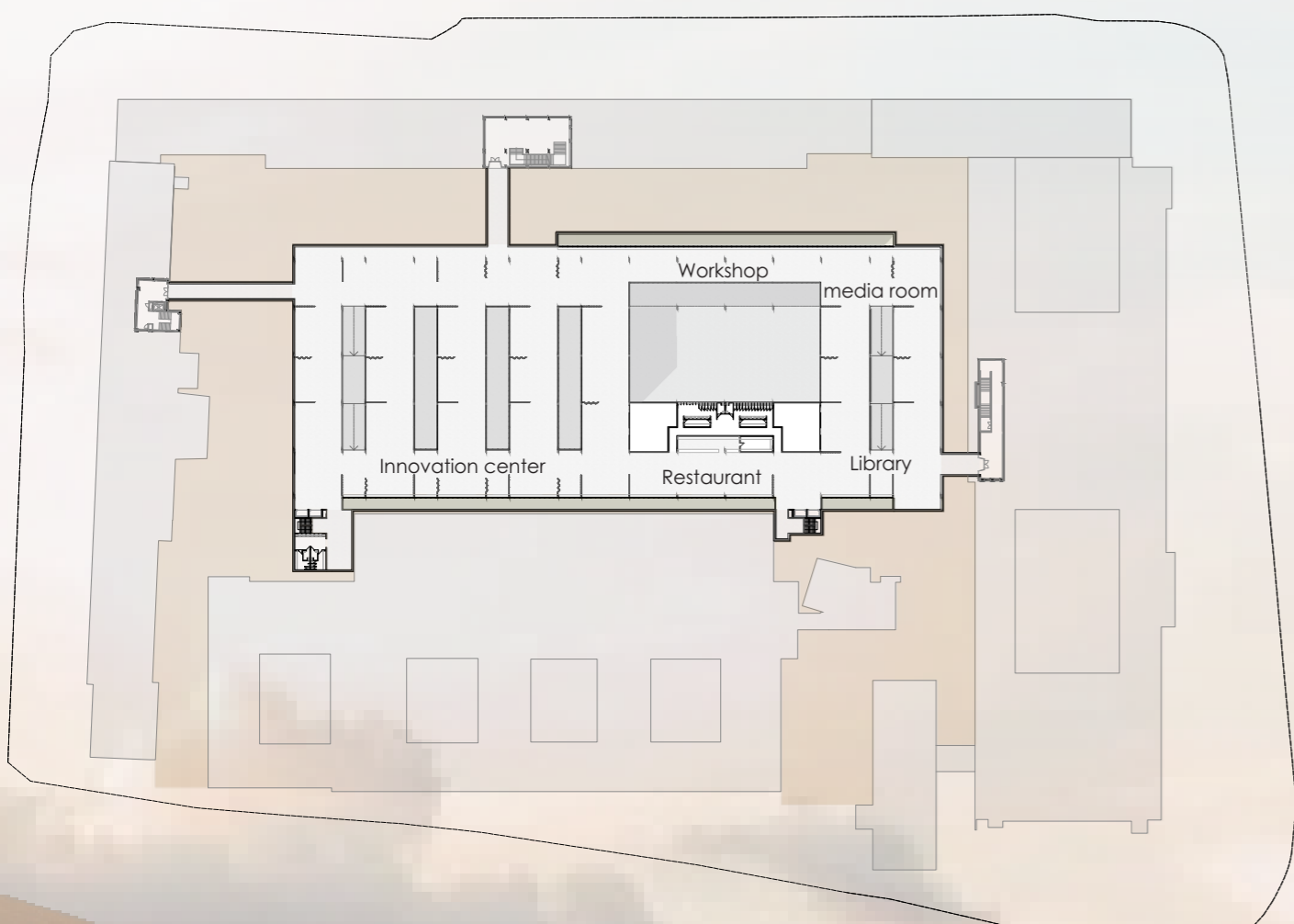
Workshop  
Library / media room  
Toilets  
Bar / Restaurant  
Innovation center  
Tunnels

**LEVEL -2 PLAN**

Parking  
Ramps  
Vertical circulation

**MATERIAL**

- OAK WOOD Furniture
- COBBLESTONE FLOORS English courtyard
- SMOOTH CEMENT Floors
- CONCRETE Walls
- STRUCTURAL GLASS Skylights



LEVEL -1 PLAN

