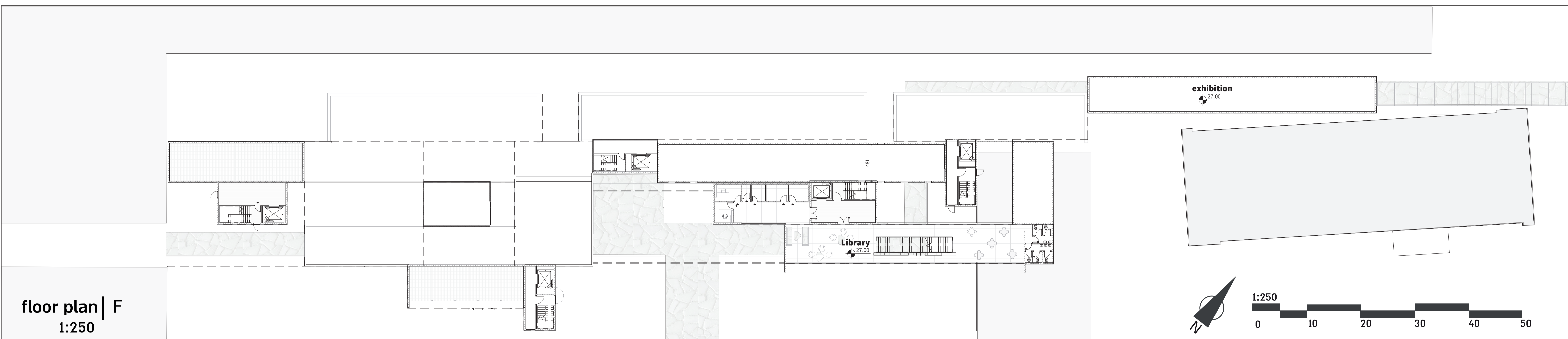
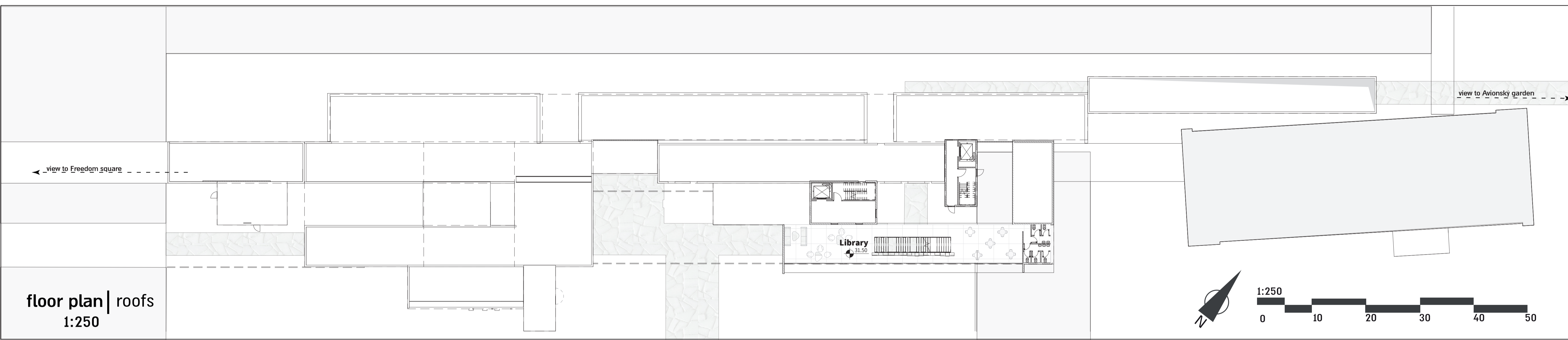


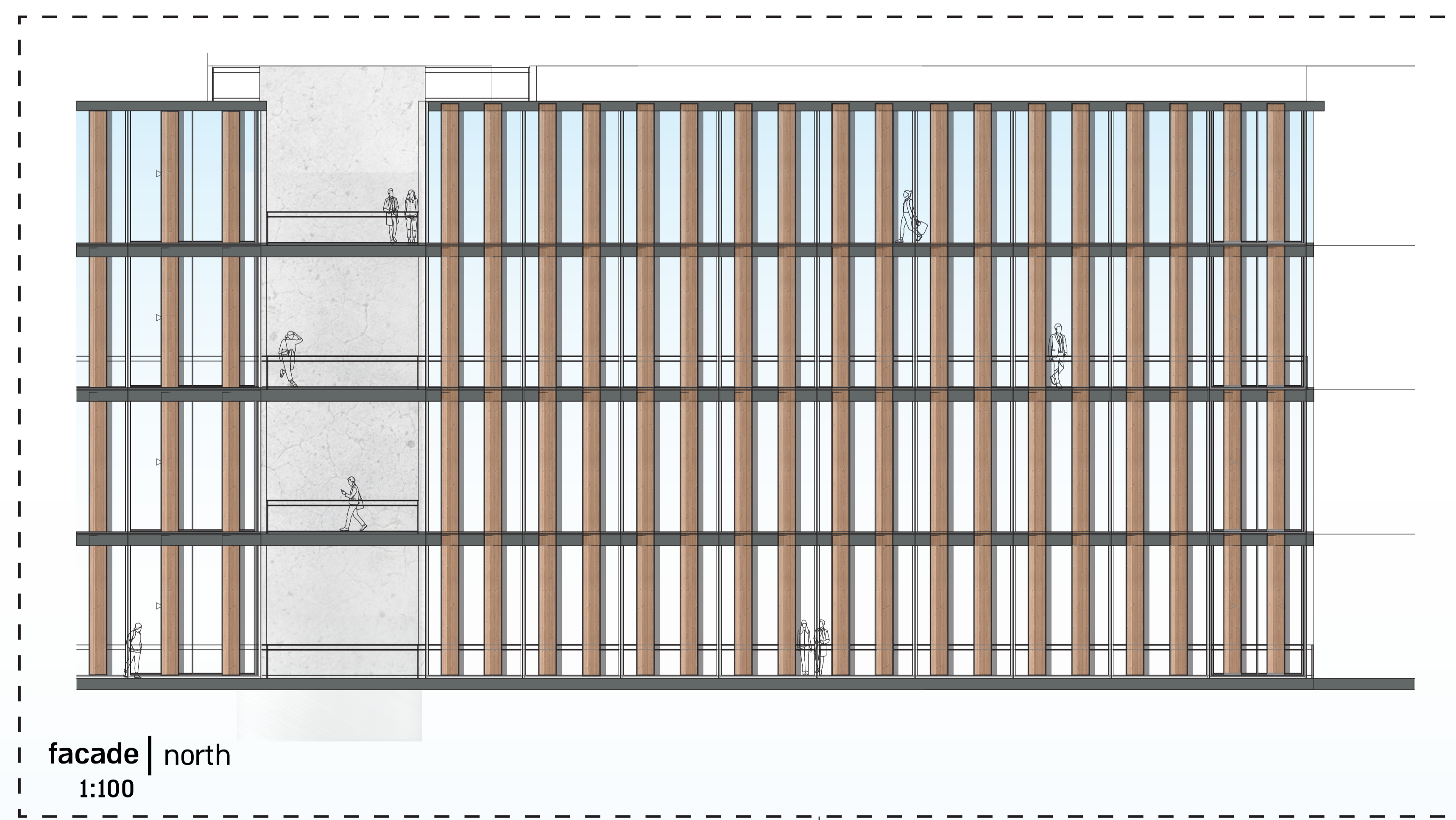
floor plan | E
1:250



floor plan | F
1:250

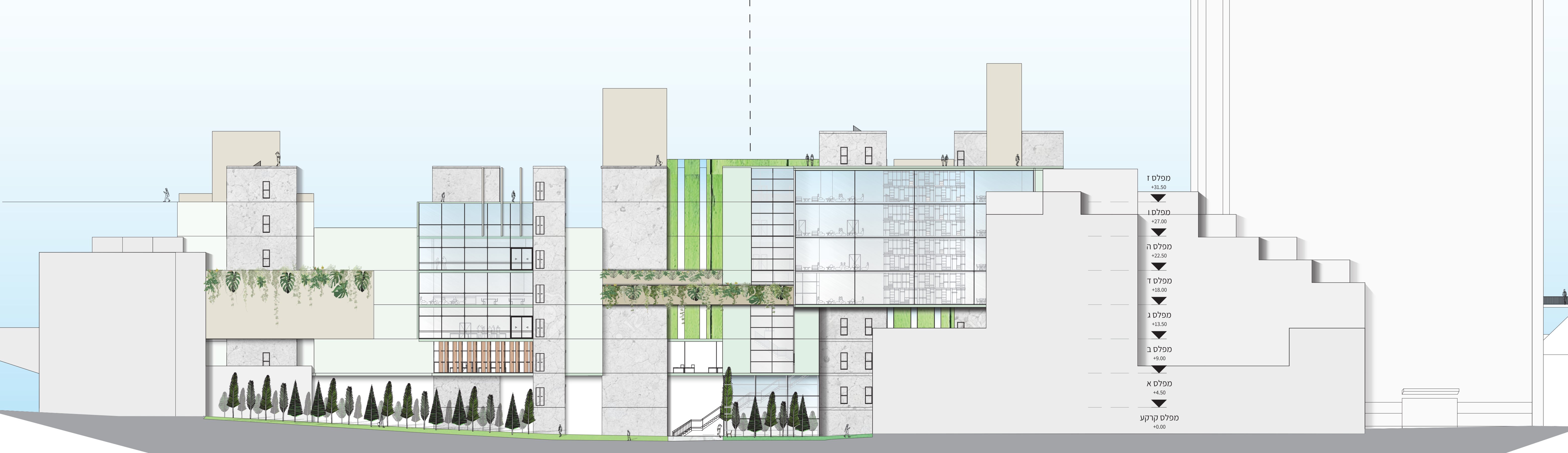


floor plan | roofs
1:250



facade | north
1:100

The northern facade is the startup.
it is possible to see the use of long shutter panels,
which on the one hand produce detachment from
the existing building and privacy, and on the other
hand bring in light and wind.
The southern facade is the one facing the park,
and it can be seen the gradual process going on
from the innermost and most closed facade, to the
most open and public facade viewing the park.



facade | south
1:250