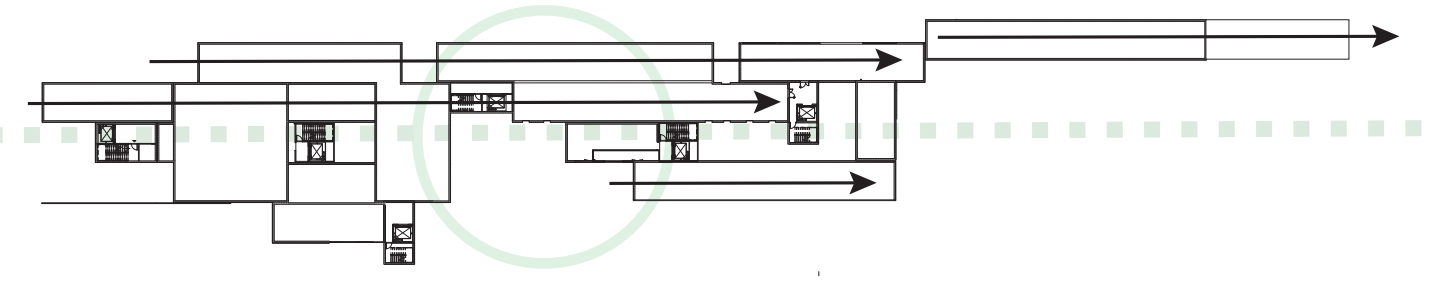


The missing link

The campus as a park



The project is located in the university courtyard, and serves as a connecting link between the two parks adjacent to the university.

The project has two goals. The first is to create another park that will link the other parks near the campus, and the second goal is to create a building that will not take over the yard, but instead will give the park the honor and the room it deserves, and at the same time serve as another building for university needs.

The concept of the structure is to create variety.

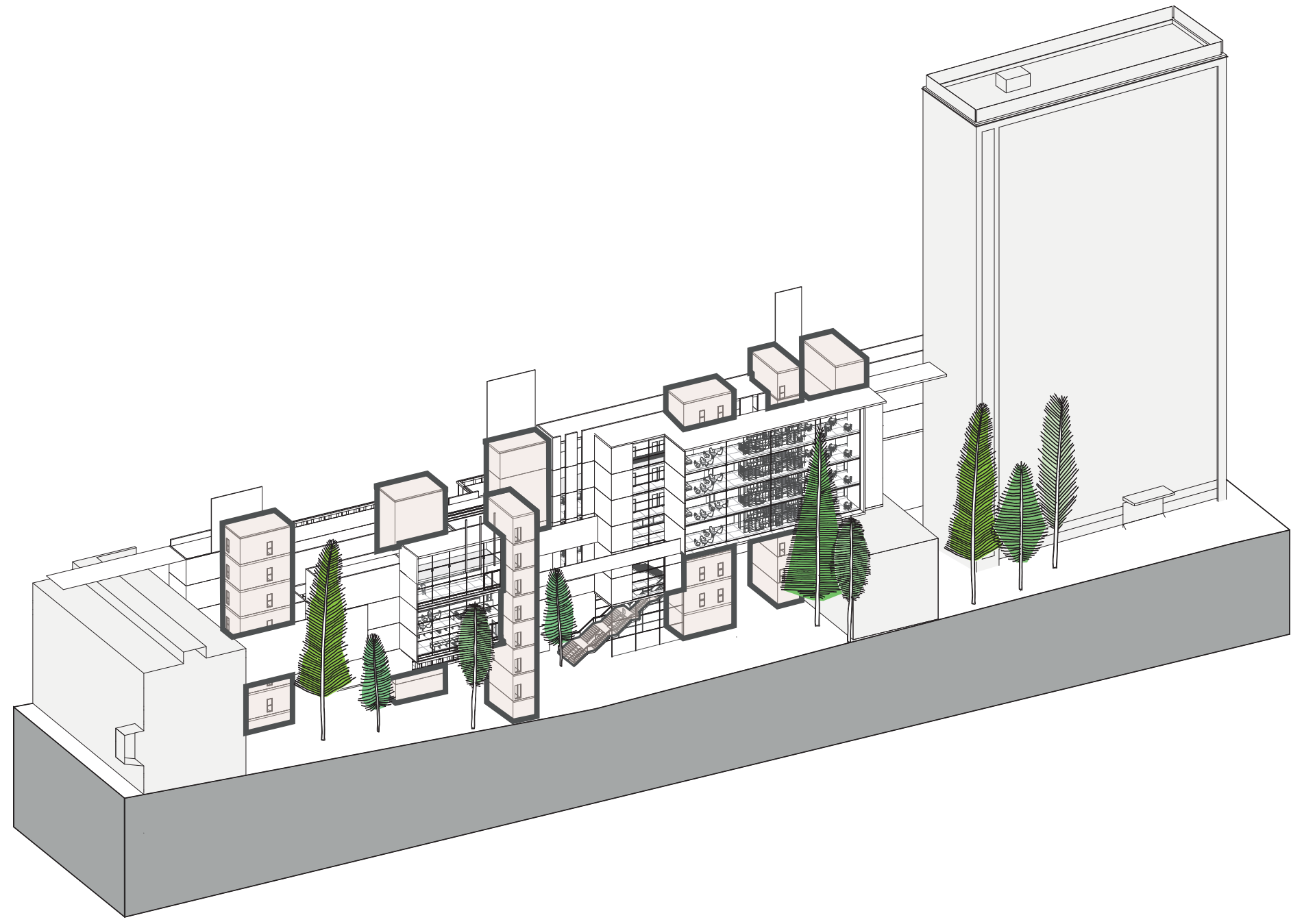
I divided the structure into long and narrow slices, and each slice would have different meeting places, while using as a function on demand.

The thin slices produce longitudinal movement along the facade of the existing building.

the more private part, such as the startup, adjacent to the wall of the existing facade, and the more public facades, such as the library, workshops and learning spaces, open and facing the newly created park.

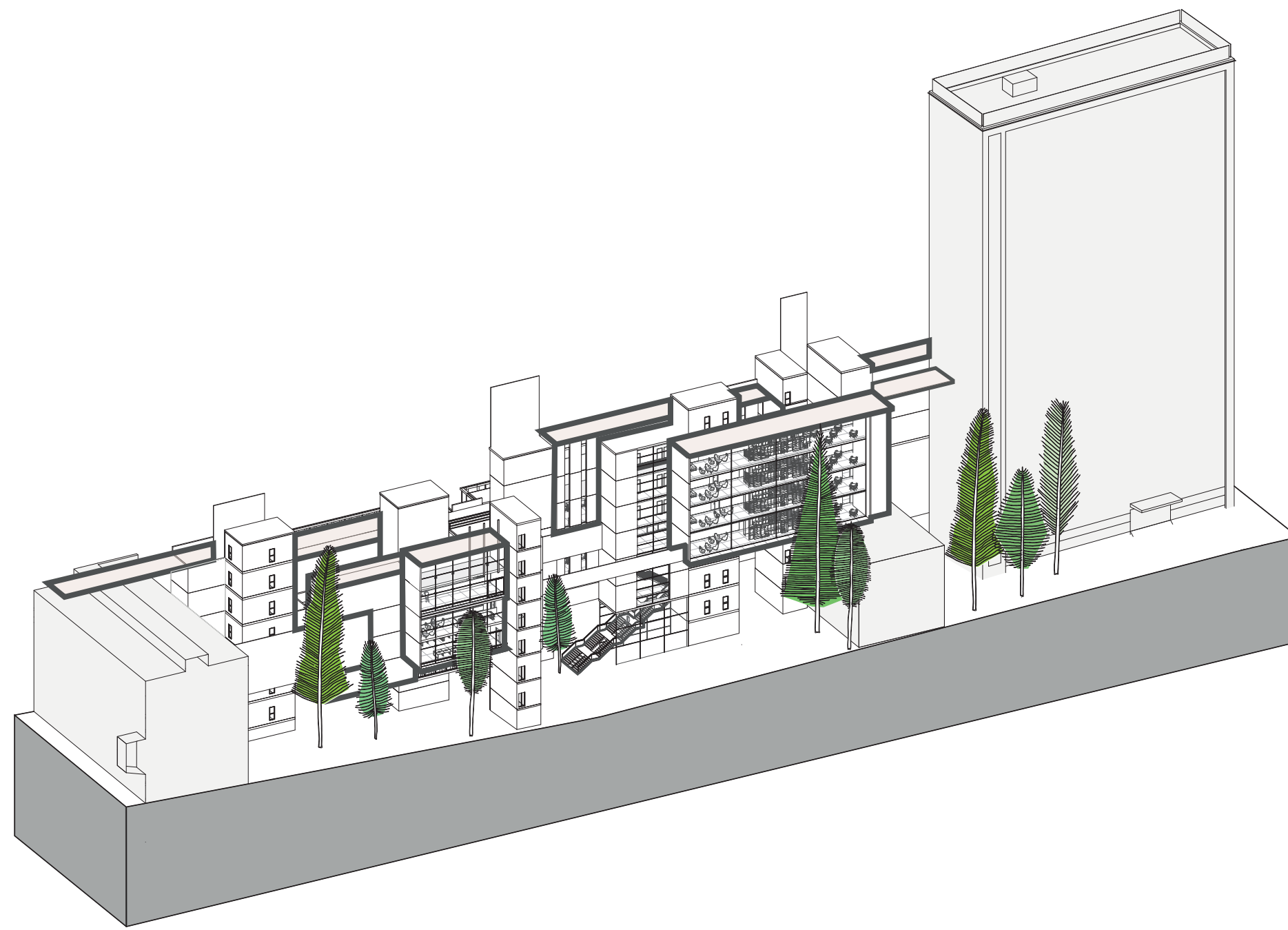
This creates a situation where walking from side to side slowly transports the users to the open green park, giving an experience of calm and serenity

In order to bring natural light into the building, between different spaces there are small gaps and curtain walls that let in light and create a relaxing environment for learning and working,



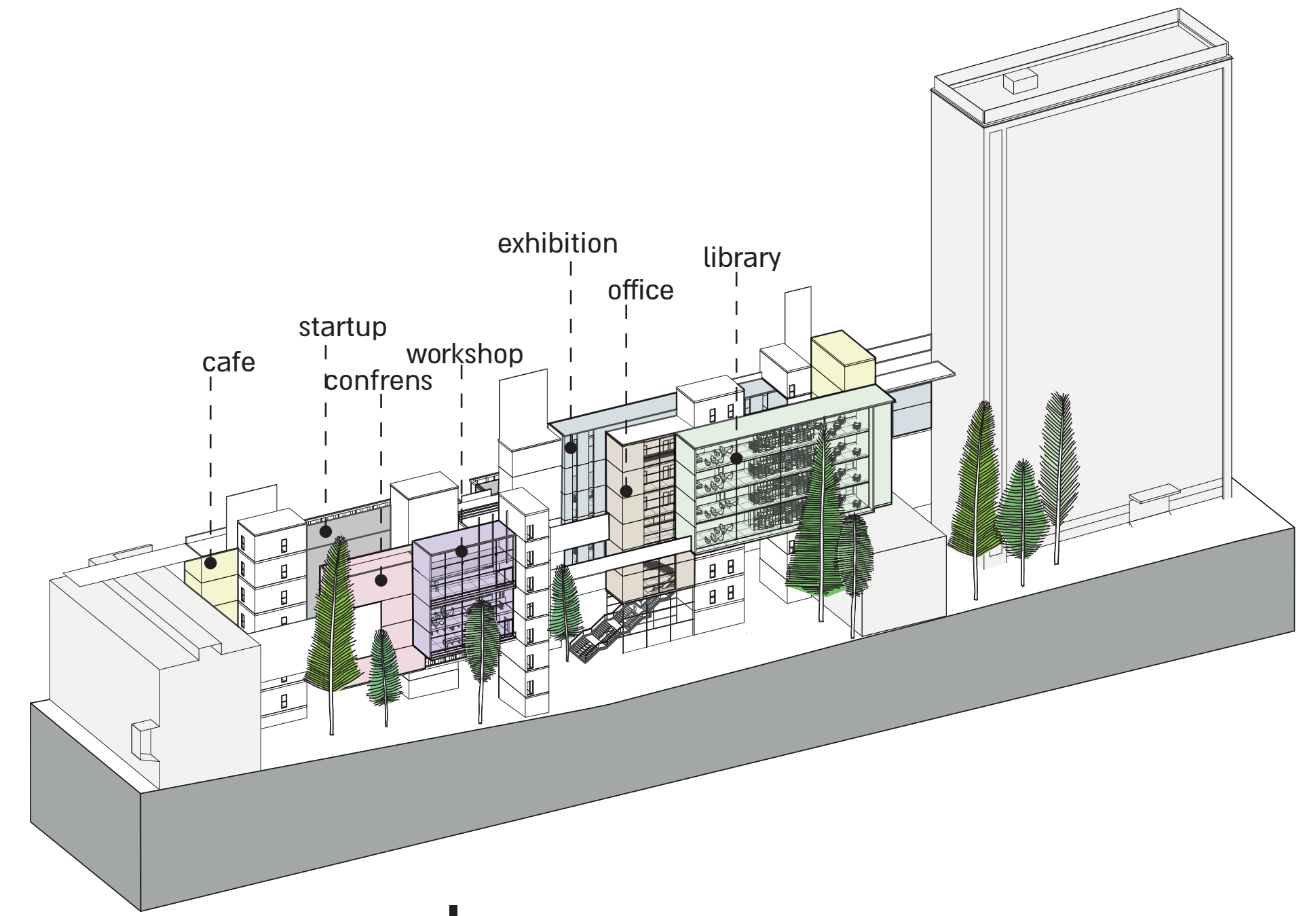
Vertical movement scheme

The shafts start from the ground floor and reach up to the roofs, and on the way serve as stopping points for exit to various places in the project



Horizontal movement scheme

You can see the balconies that go up over the roofs of the existing buildings and connect those who walk on them to the park. The movement is horizontal throughout the project in order to accompany the walkers from one garden to another



Division of functions

It can be seen that the library, which is the main public space, has the entire facade face to the park. In contrast, the startup, which belongs to the university, is in a hidden place in order to give privacy to the employees

