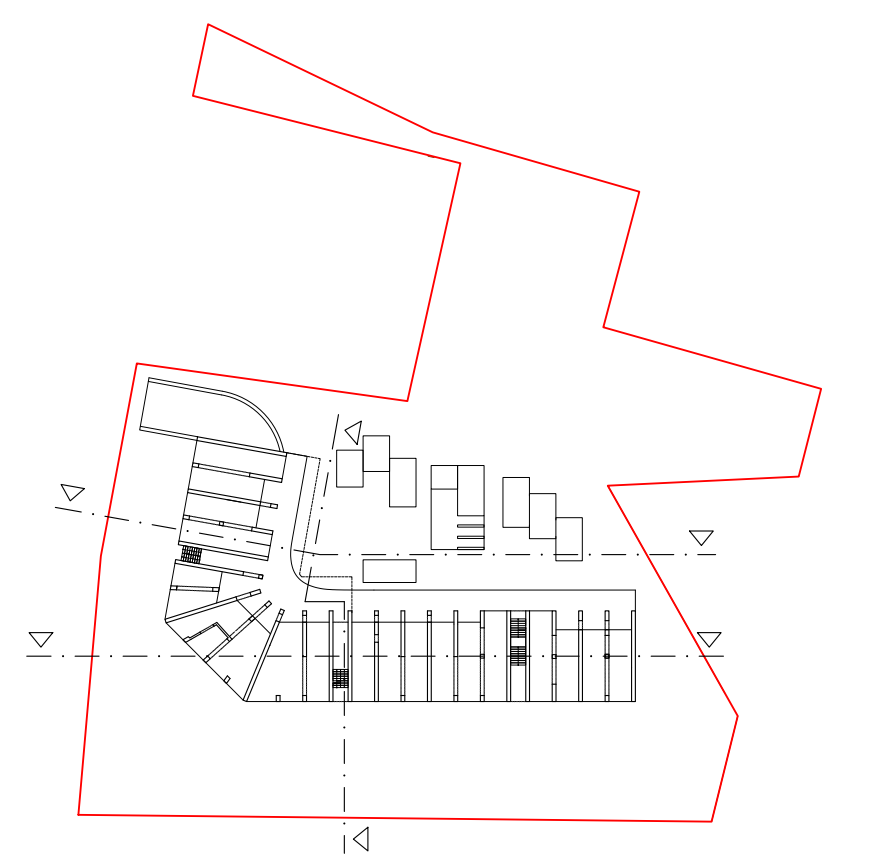
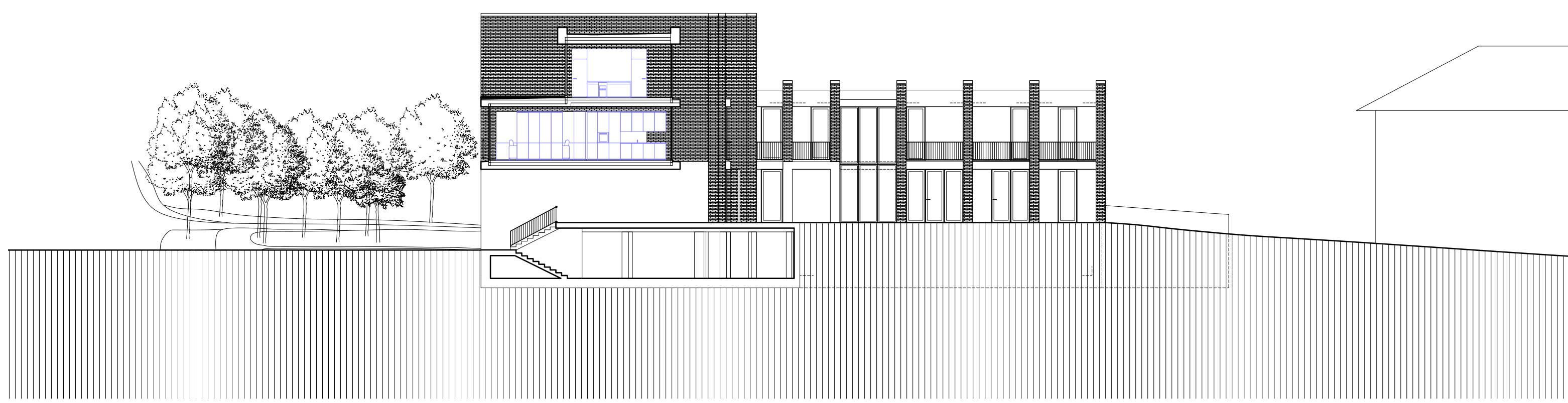




POZDĚLNÝ REZOPHĽAD

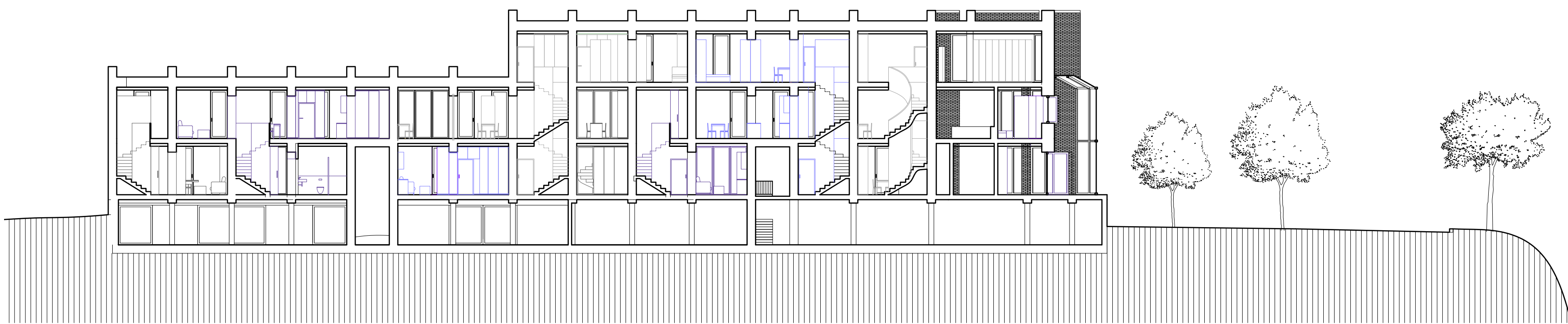
PRIEČNY REZ | 1:200

+10,820
+6,600
+3,300
0,000
-2,940



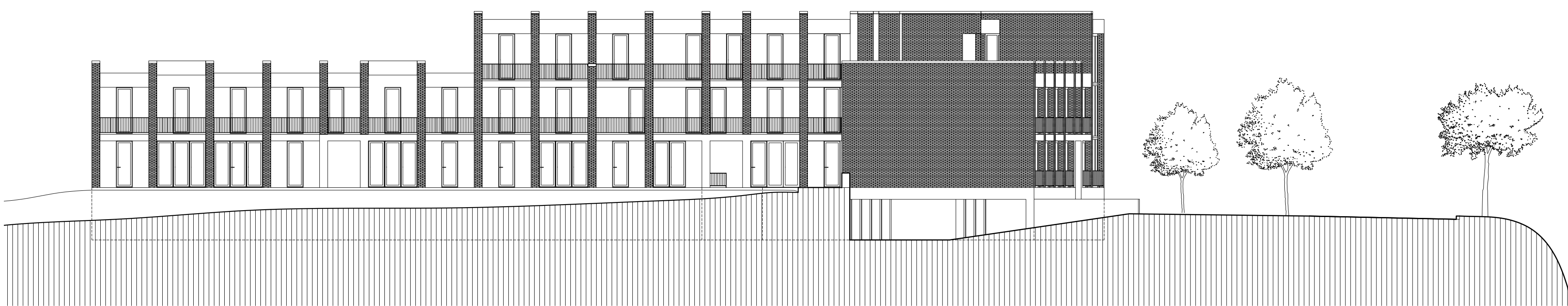
POZDĚLNÝ REZ | 1:200

+10,820
+7,520
+3,300
0,000
-2,940



SEVERNÝ POHĽAD | 1:200

+10,820
+7,520
+3,300
0,000
-2,940



JUŽNÝ POHĽAD | 1:200

+10,820
+7,520
+3,300
0,000
-2,940

