

# Shuttle

CAMPUS STU COMPETITION



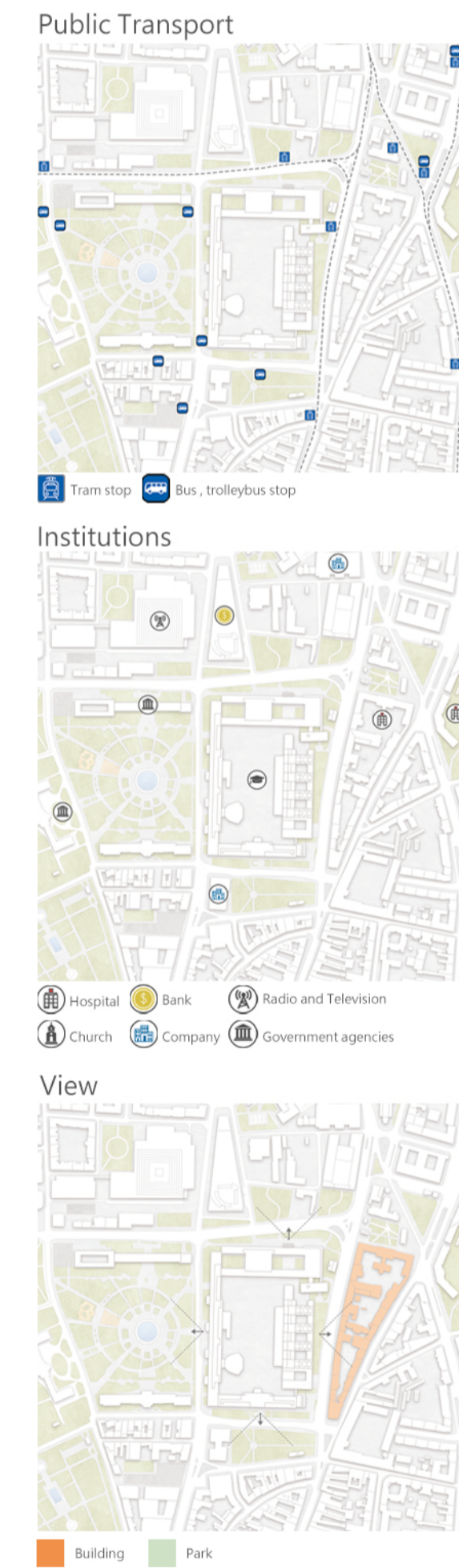
The project site is in a center yard of Slovak University of Technology in Bratislava, is (surrounded by many government agencies and important institutions) in the old town of Bratislava, the capital of Slovakia.

This design concept is creating a center yard to connect the surrounding parks, green spaces and the environment. The buildings are raised one-floor height and the underground floors are designed with a center courtyard to reduce the volume on the ground and return it to students and teachers. It also considered for using natural lighting and ventilation to achieve energy-saving features. The inner spaces are mainly based under the ground but with a large center courtyard. It extends the open space but also keep the semi-private areas for each use of space.

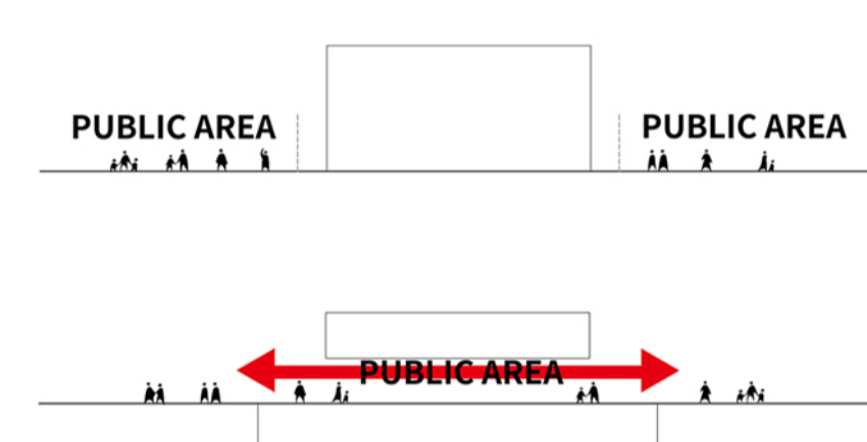
In this project the parking spaces are moved to the underground and the parking circulation is improved. And combined with the surrounding environment and different colleges. Hold professional and academic activities in the campus center yard, turning it into an important public communication space in the city.



## Site Analysis

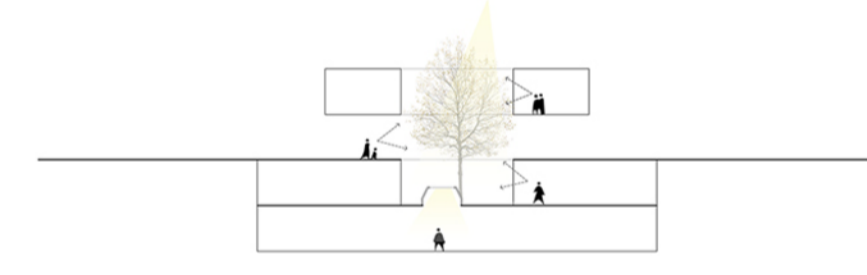


## Concept

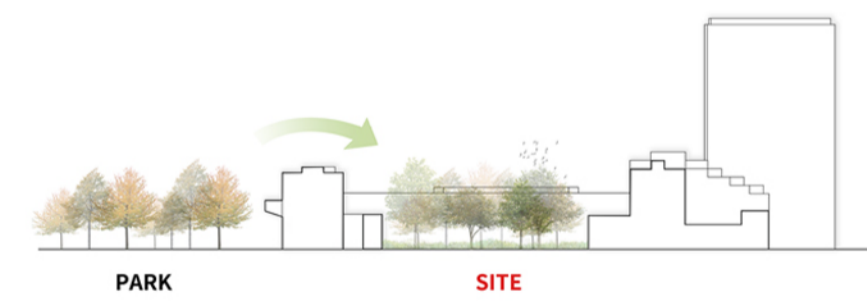


Raise the first floor of the building to return the space to students and teachers

## VIEW

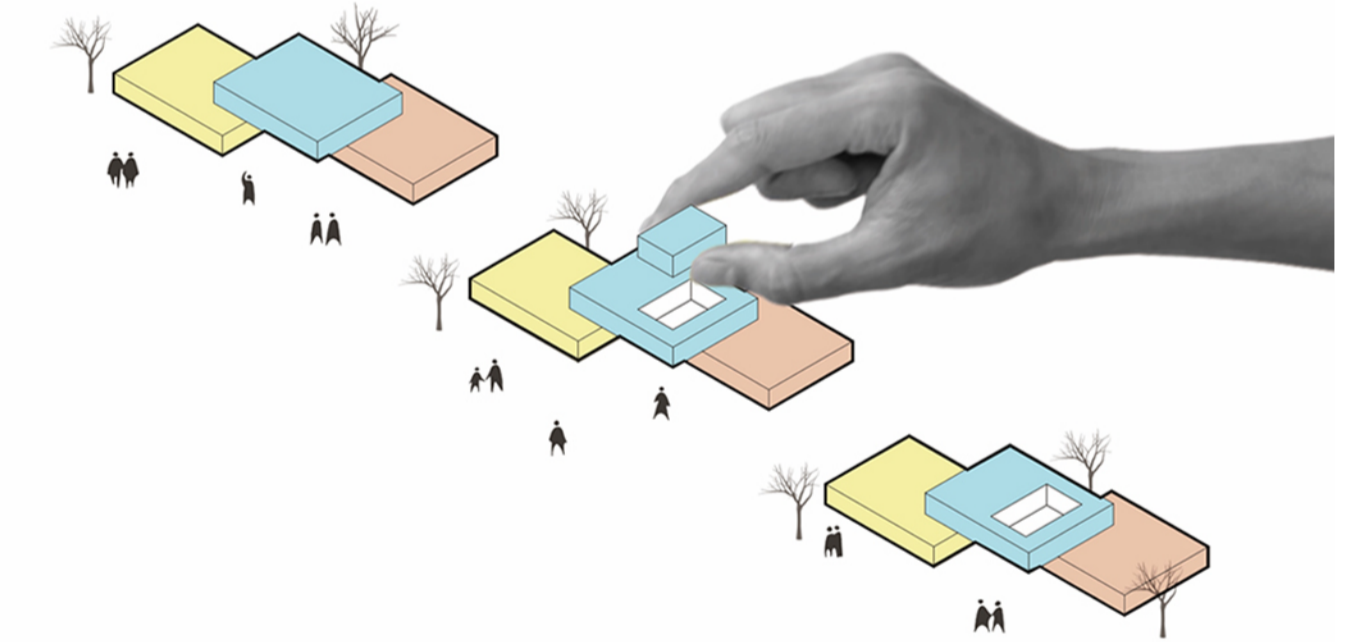


Let natural elements such as sunlight and trees intersperse in the building to connect the upper and lower floors.



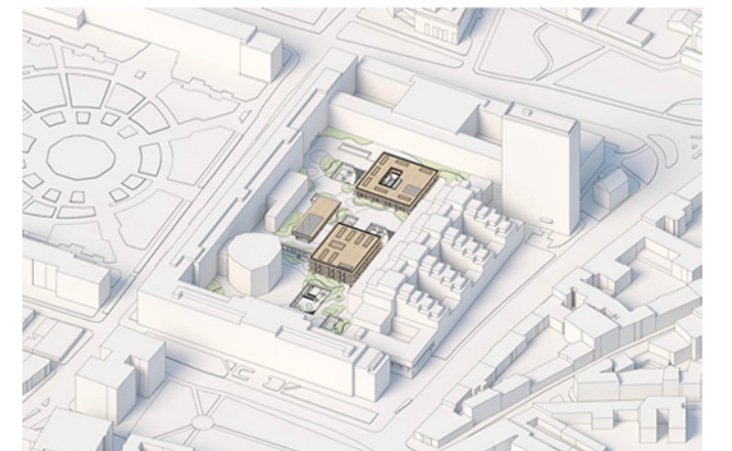
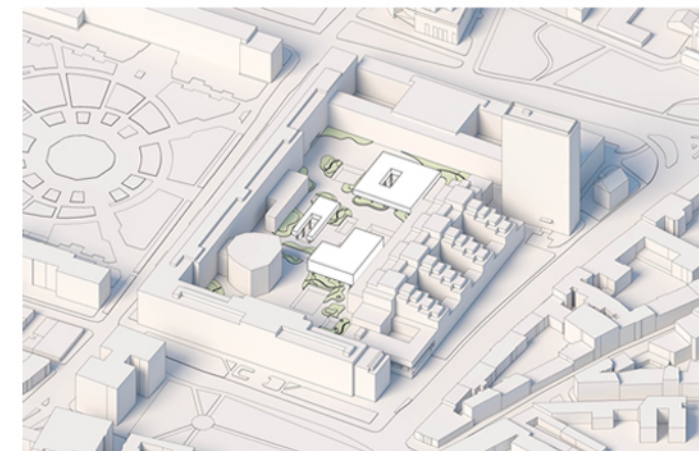
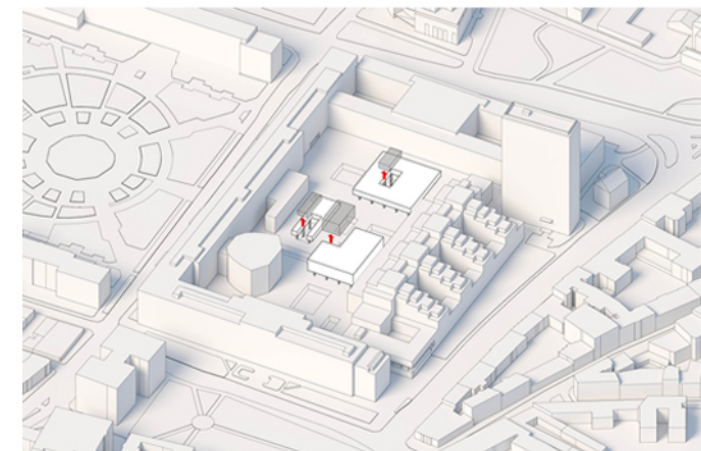
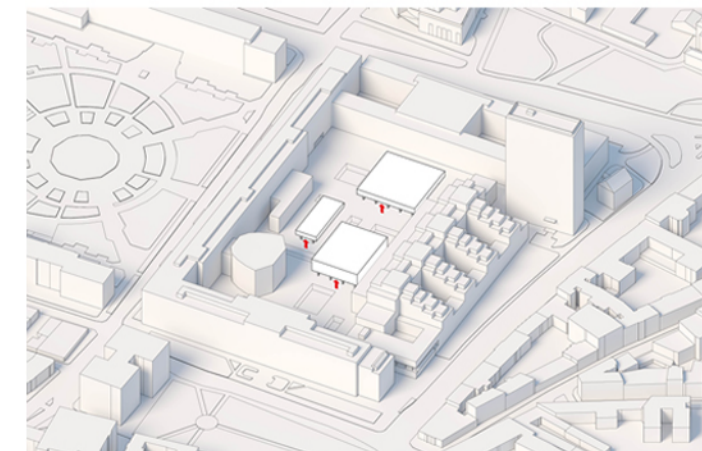
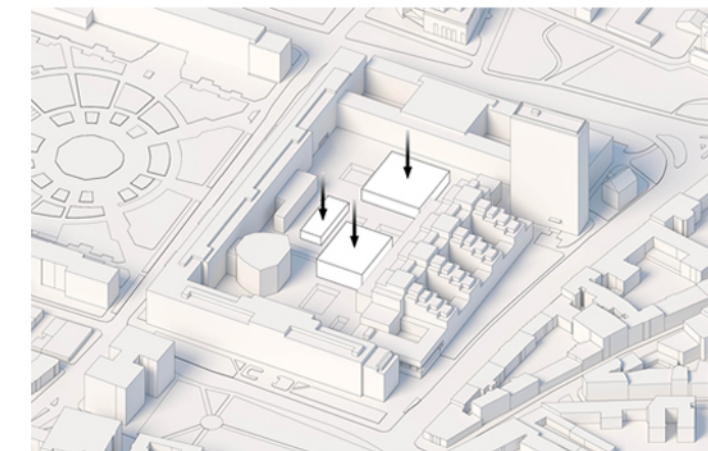
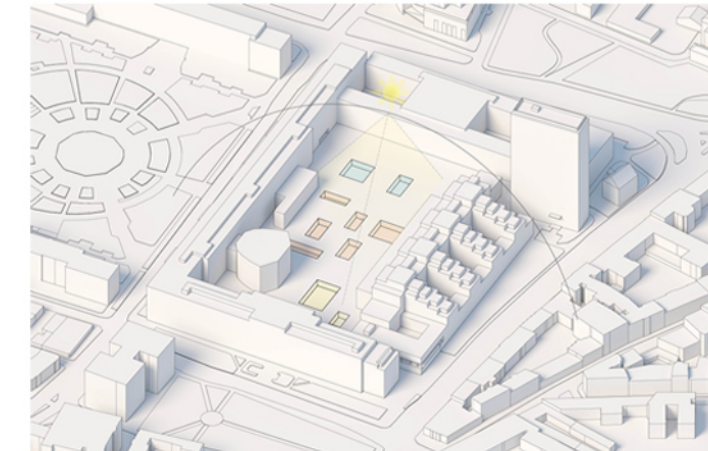
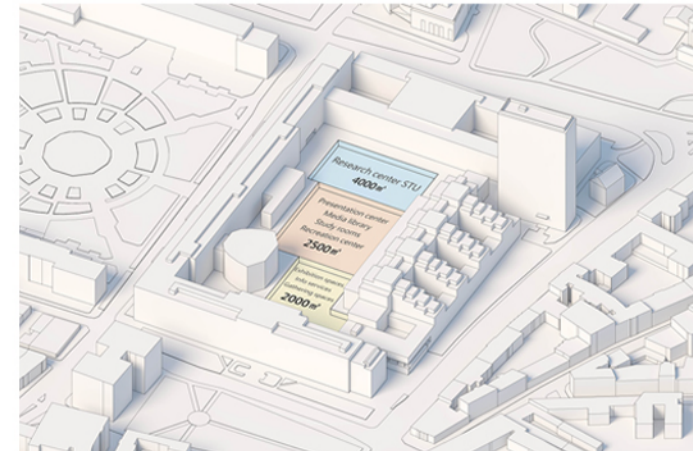
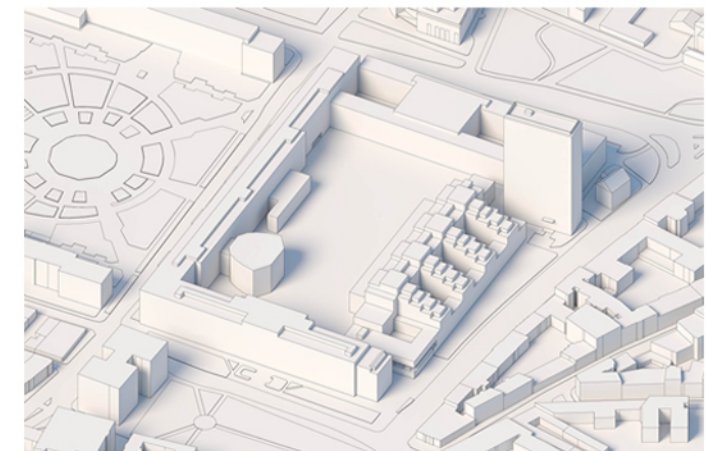
The greenery of the surrounding park extends into the site to generate a large garden

## Can you feel it?



The building is formed with a opening yard in the center allowing sunlight, rain, snow, and greenery to reach all floors

## Step



removing the removable buildings to leave the center space and return it to people and nature.

The large volume is placed under the ground, and the volume is reduced on the ground.

The ground is designed to make some hole to let the sunshine entering the ground.

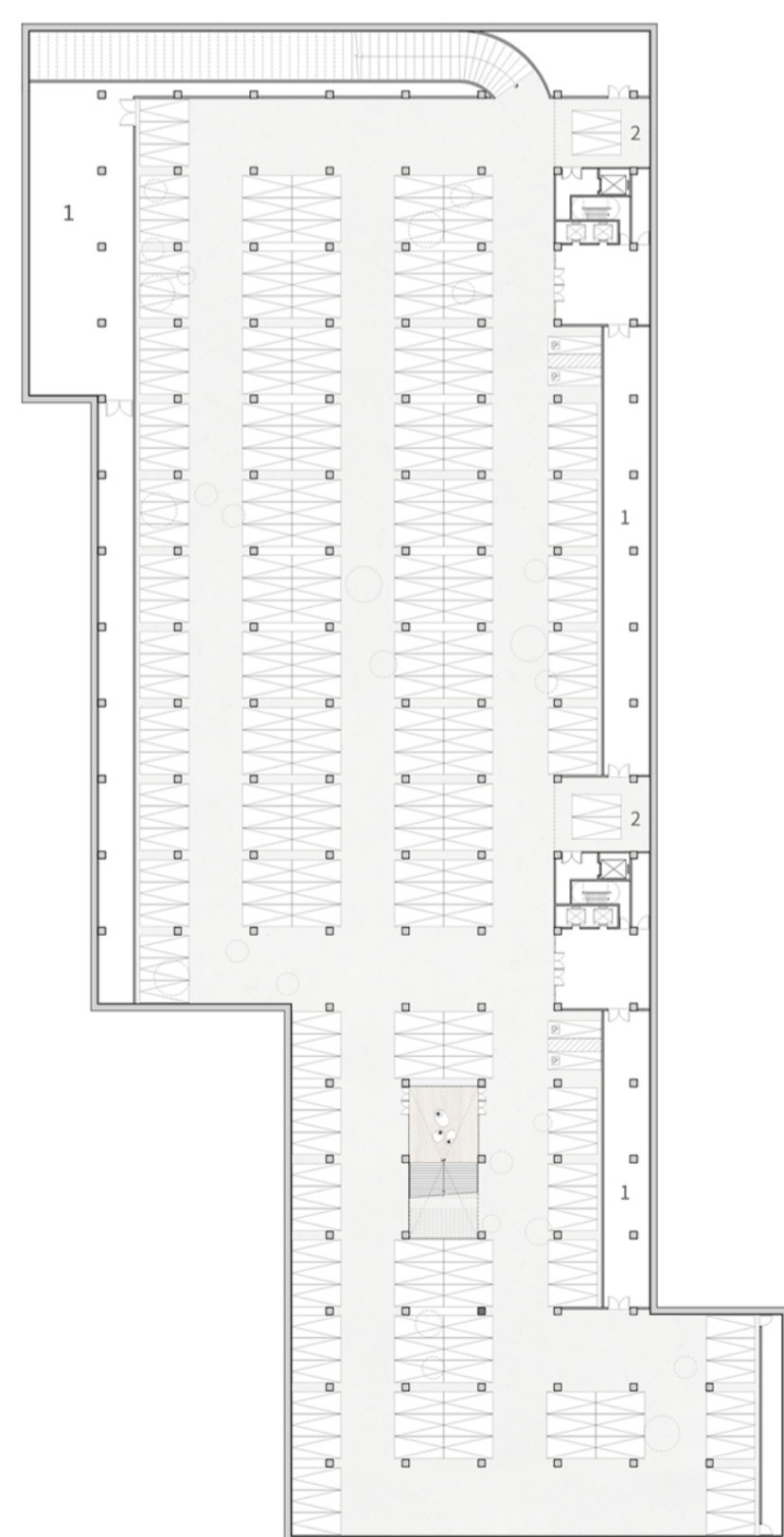
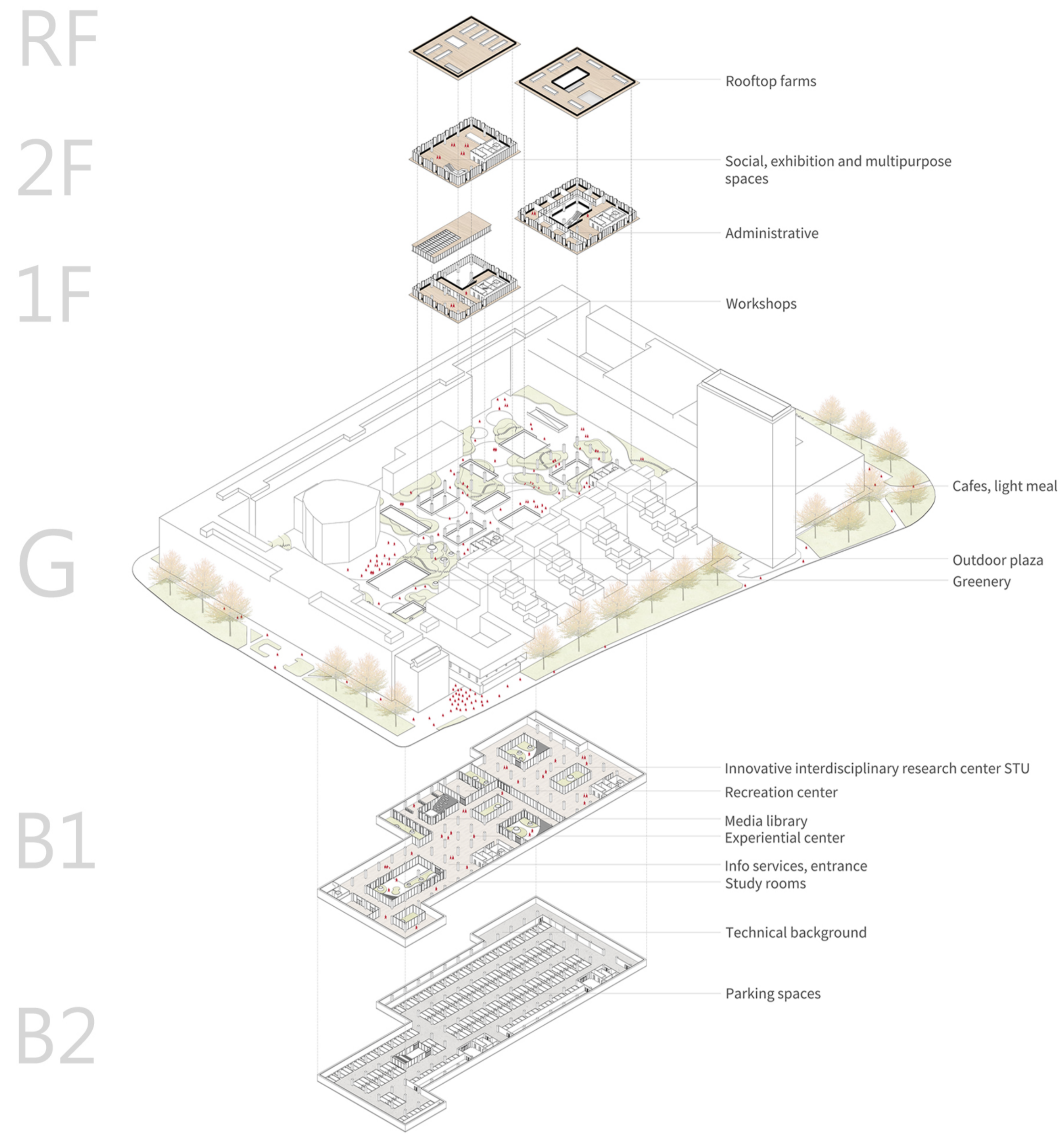
Distributed configuration to avoid too dense.

The ground floor of all buildings are designed to raise at 5 meters height so that people can move around freely on the ground yard.

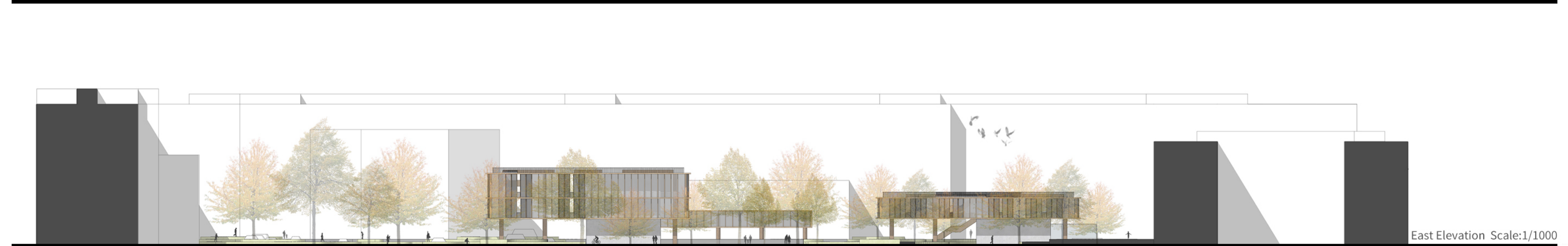
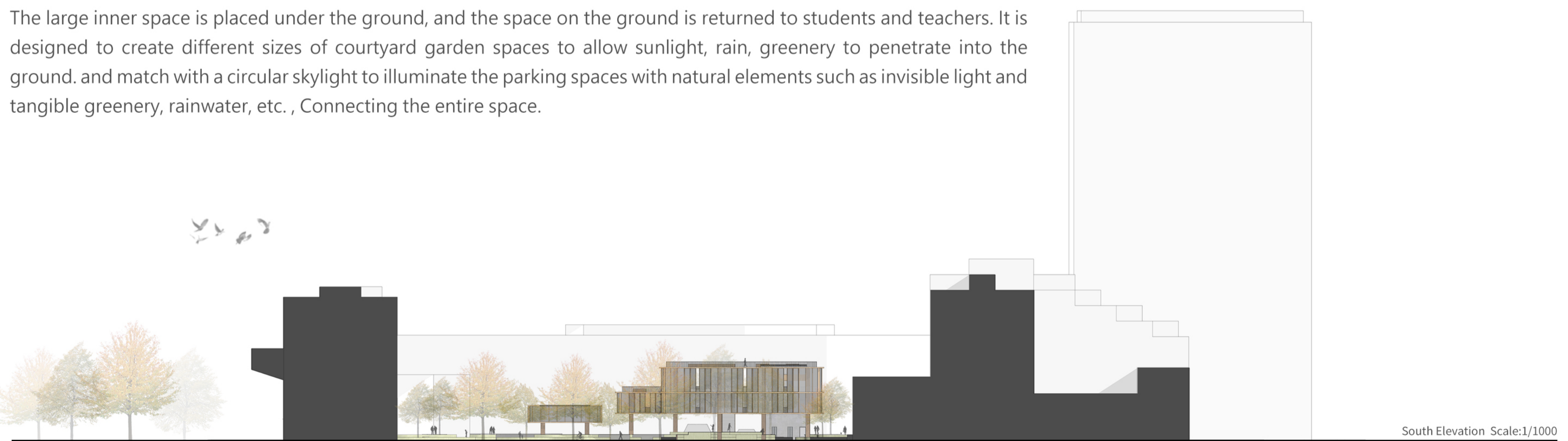
The buildings is formed with a center yard to allow sunlight to reach all underground spaces.

Use grass mounds to create a path for people to shuttle in the center yard.

Final Result



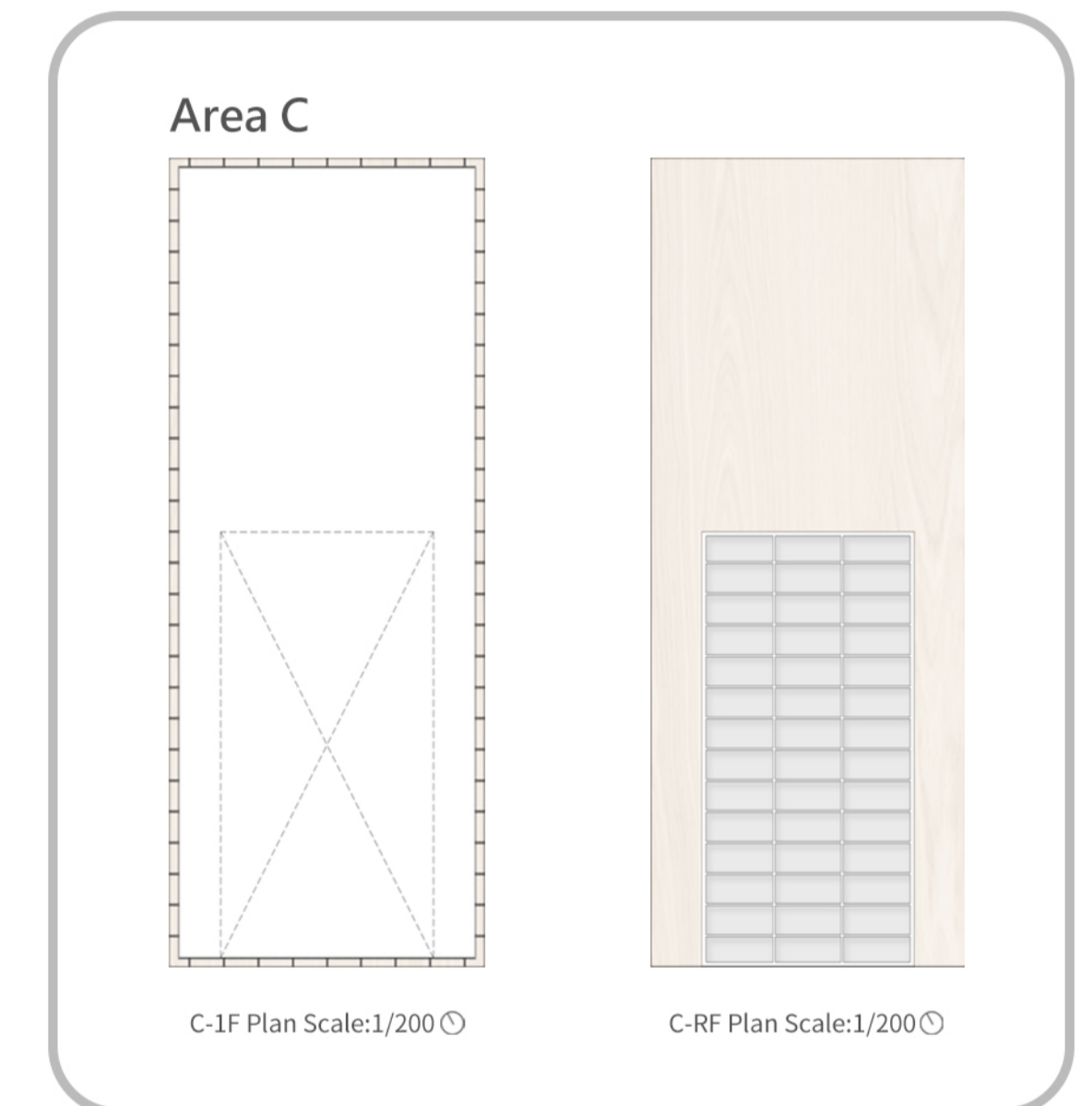
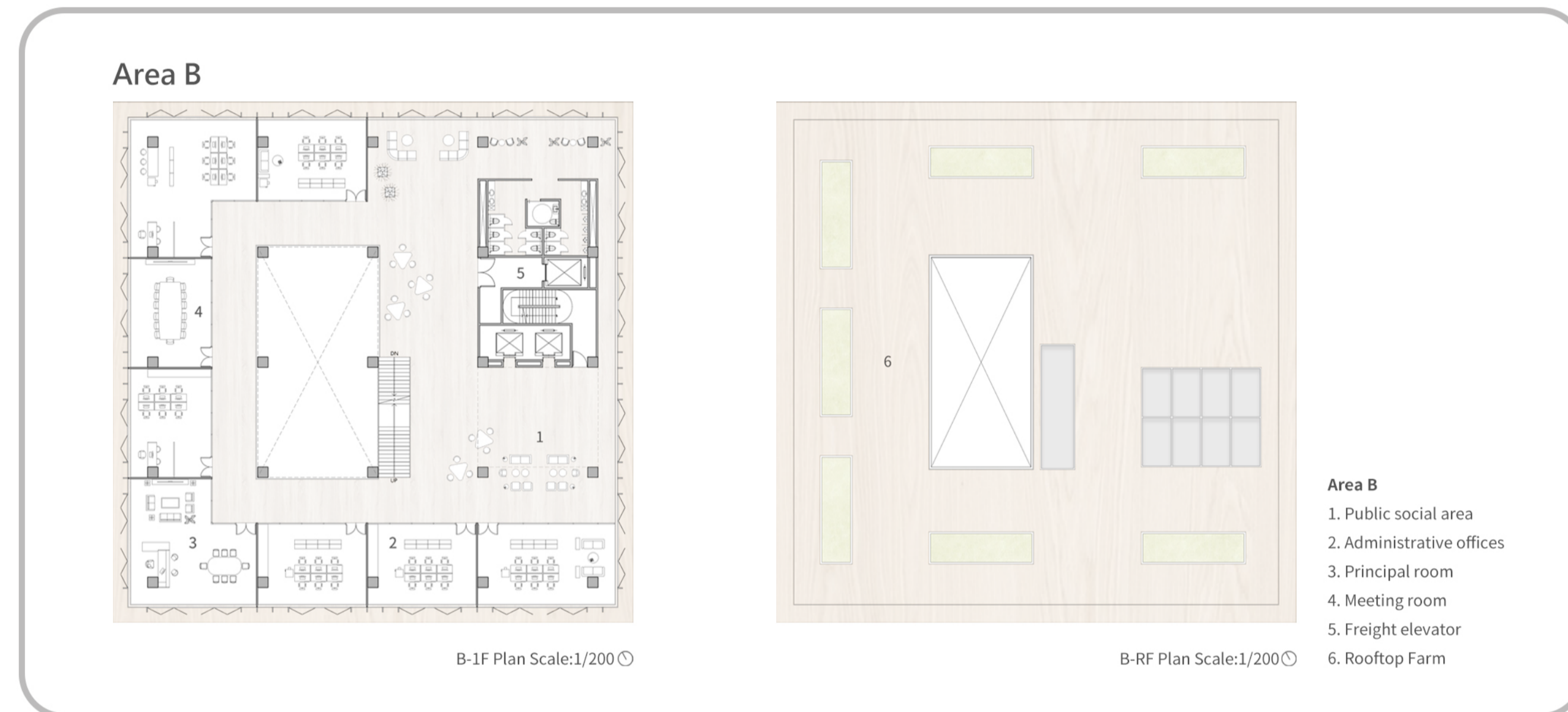
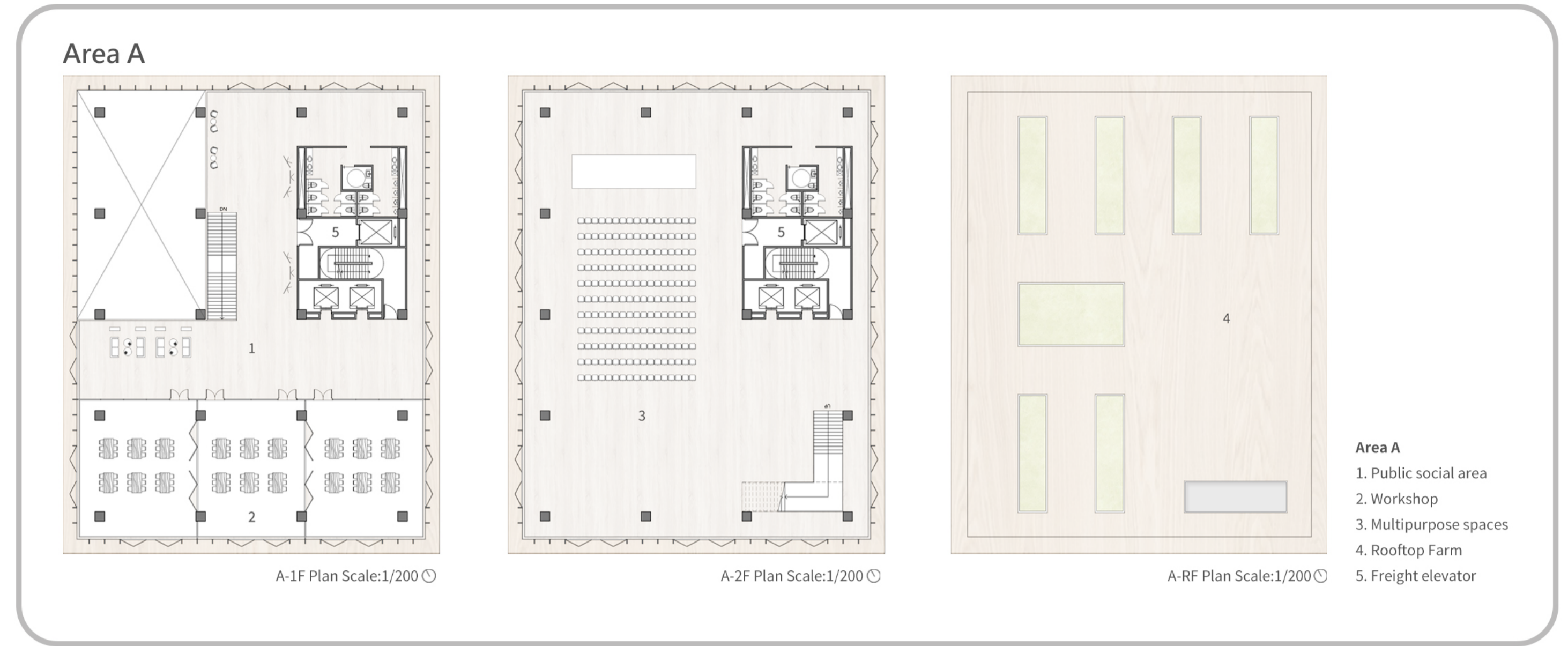
The large inner space is placed under the ground, and the space on the ground is returned to students and teachers. It is designed to create different sizes of courtyard garden spaces to allow sunlight, rain, greenery to penetrate into the ground, and match with a circular skylight to illuminate the parking spaces with natural elements such as invisible light and tangible greenery, rainwater, etc., Connecting the entire space.





The greenery is designed to extend from the newly created center yard to the ground floor of the buildings with grass mounds and trees, providing many spaces for resting and chatting. The square is becoming an important activity space on the campus.

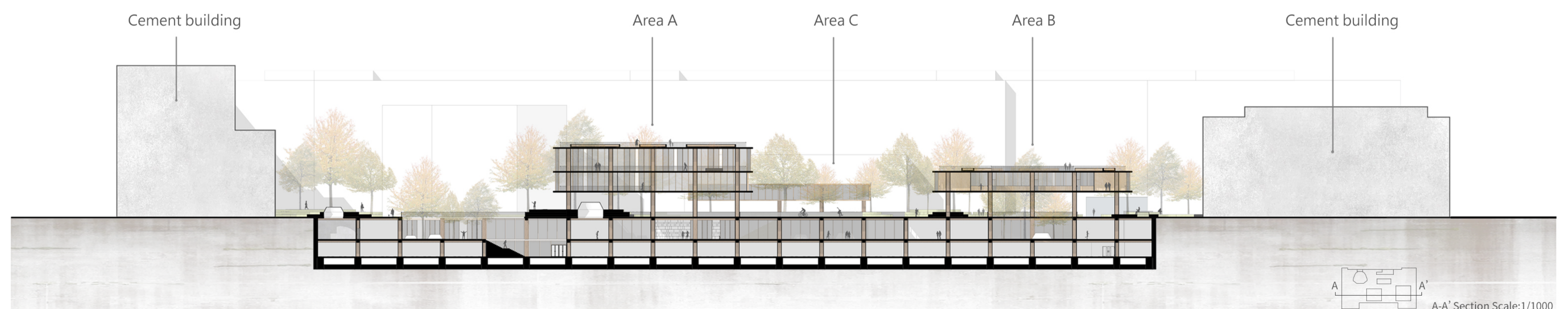
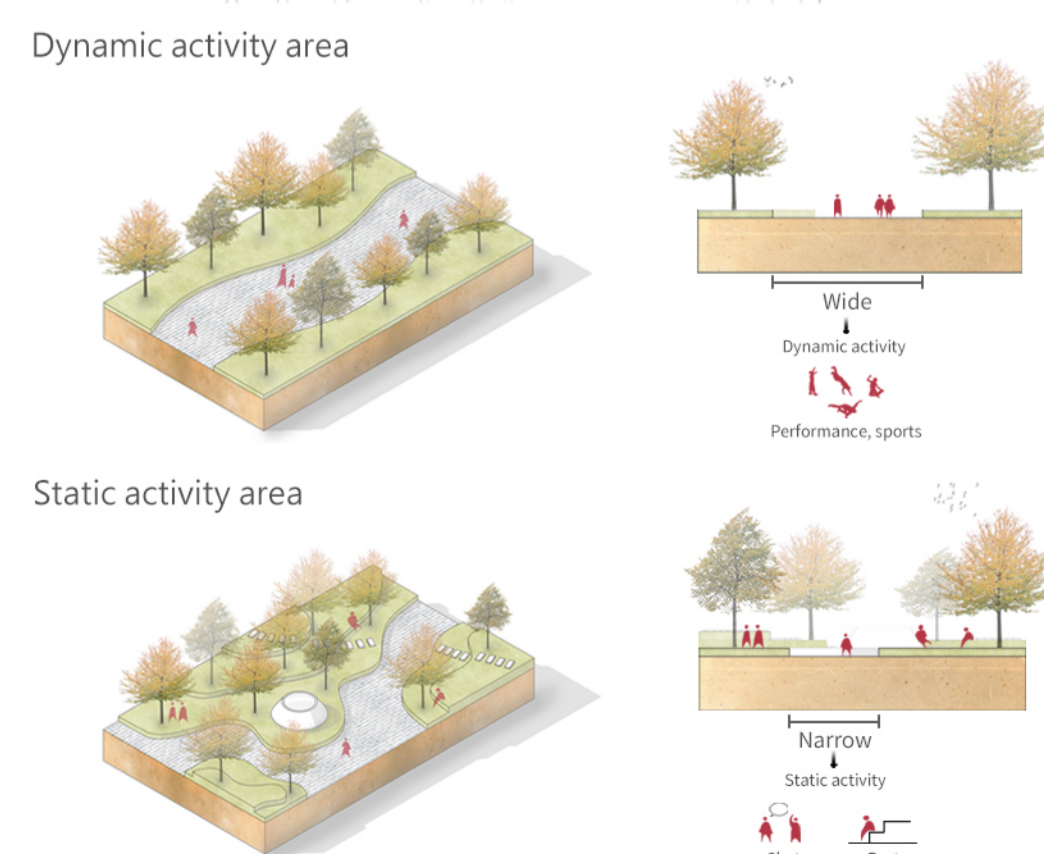
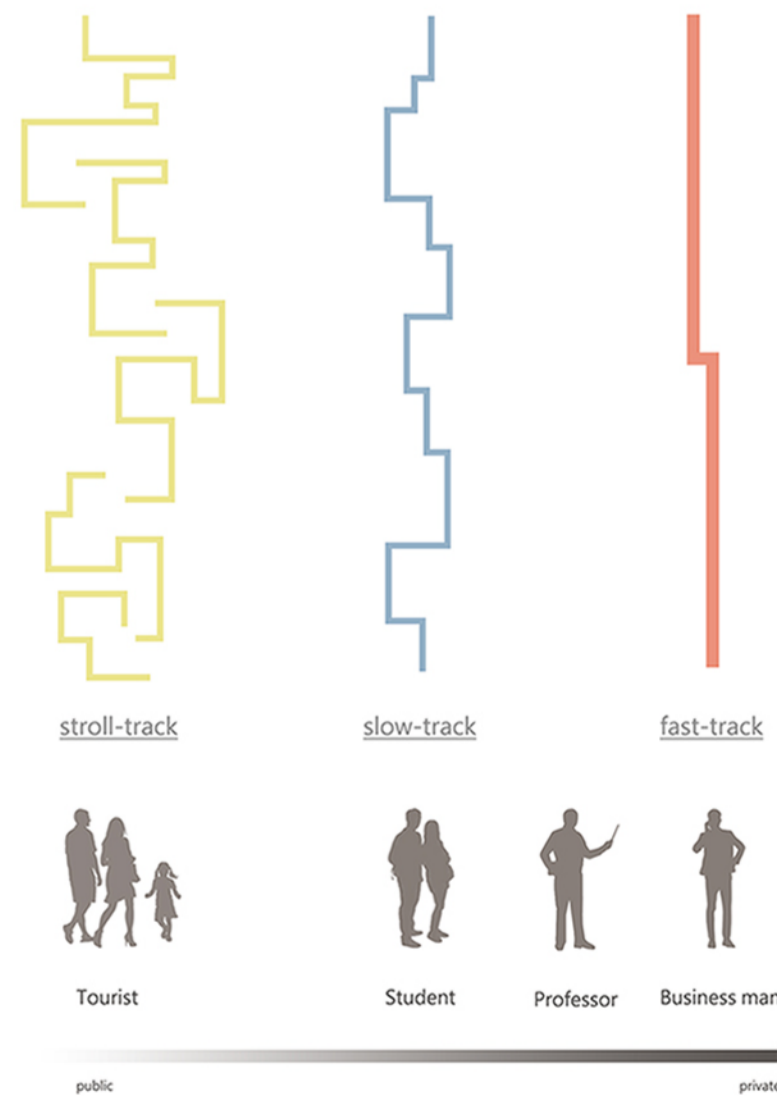
Buildings A, B, and C are formed with a center opening and equipped with different functions, including administrative offices, principals' rooms, multi-functional spaces, workshops, roof farms, etc. Every building has an atrium space for trees, flowers and plants to grow. When people are on different floors, the scenery will change differently.



**Landscape**

Analyze the areas frequently visited and the paths of 3 groups of people: Tourist (stroll-track), students (slow-track), business man (fast-track).

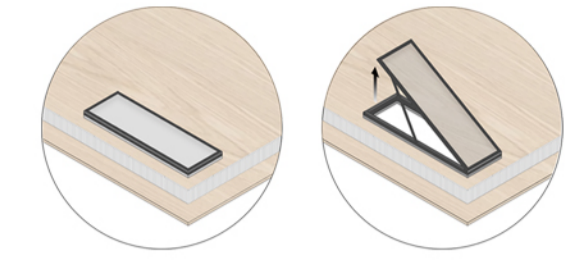
Using grass mounds and trees to create three static activity areas where students and teachers can communicate, chat, and rest. In the middle is an area for large-scale school activities.



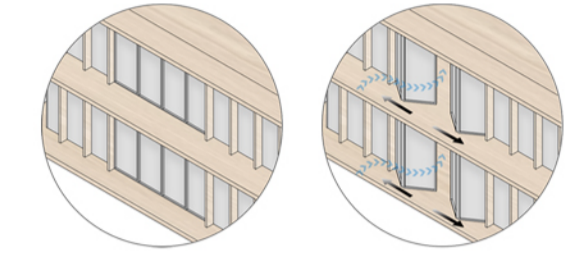


**Material**

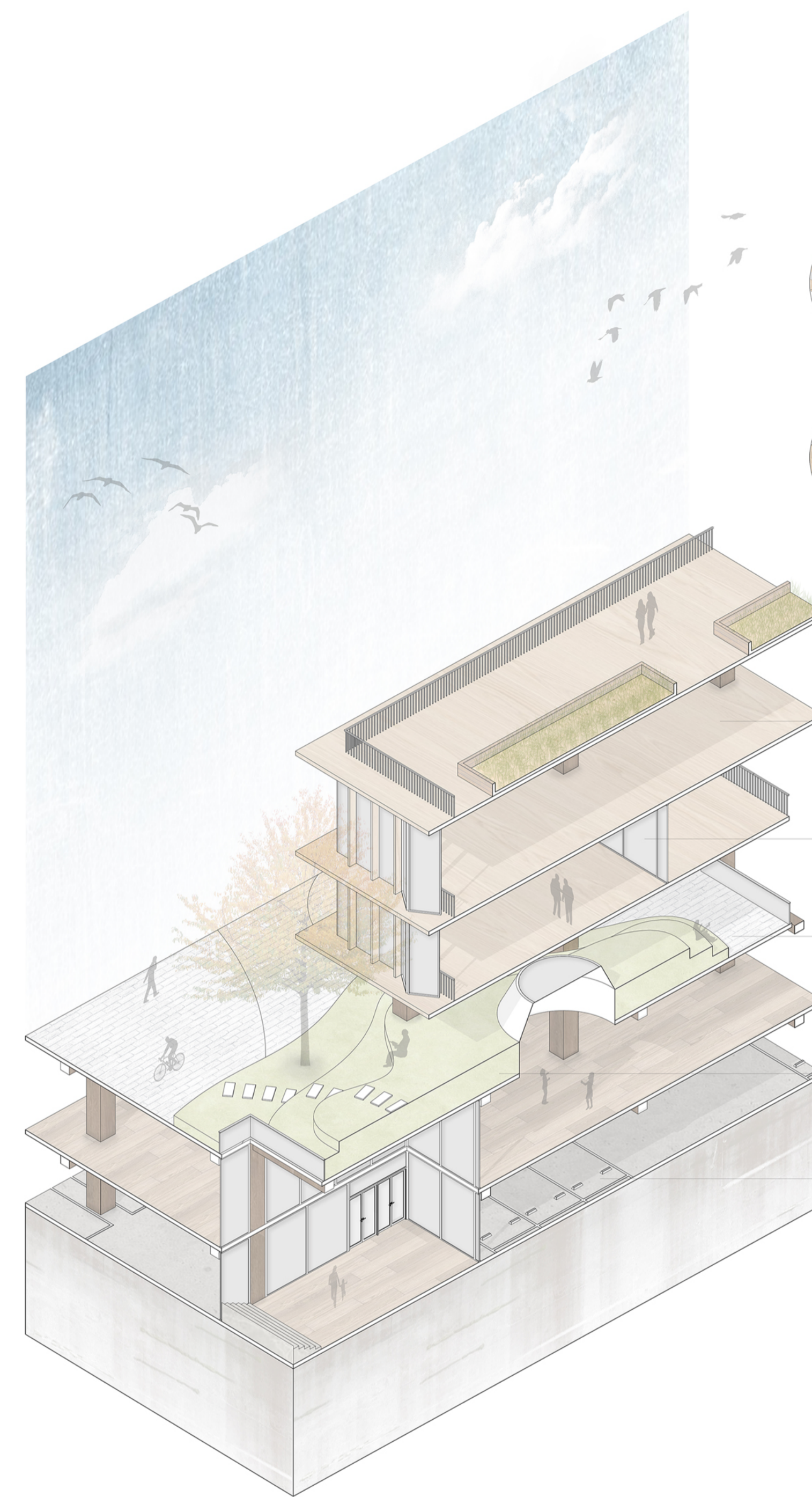
The project is using the following materials, including wood, glass, brick, grass, and asphalt, and is mainly durable, environmentally friendly, and low-maintenance, making the STU innovation center a sustainable building.



Using sliding glass windows let wind and sunlight entering to achieve energy-saving benefits.



Using skylights on the roof allow sunlight entering the room.



- Wood  
CLT structural 
- Glass 
- Brick 
- Grass 
- Asphalt 

**Structure**

The building is using CLT structure. The construction period can be greatly shortened. And the personnel cost and energy waste during construction can be reduced.

