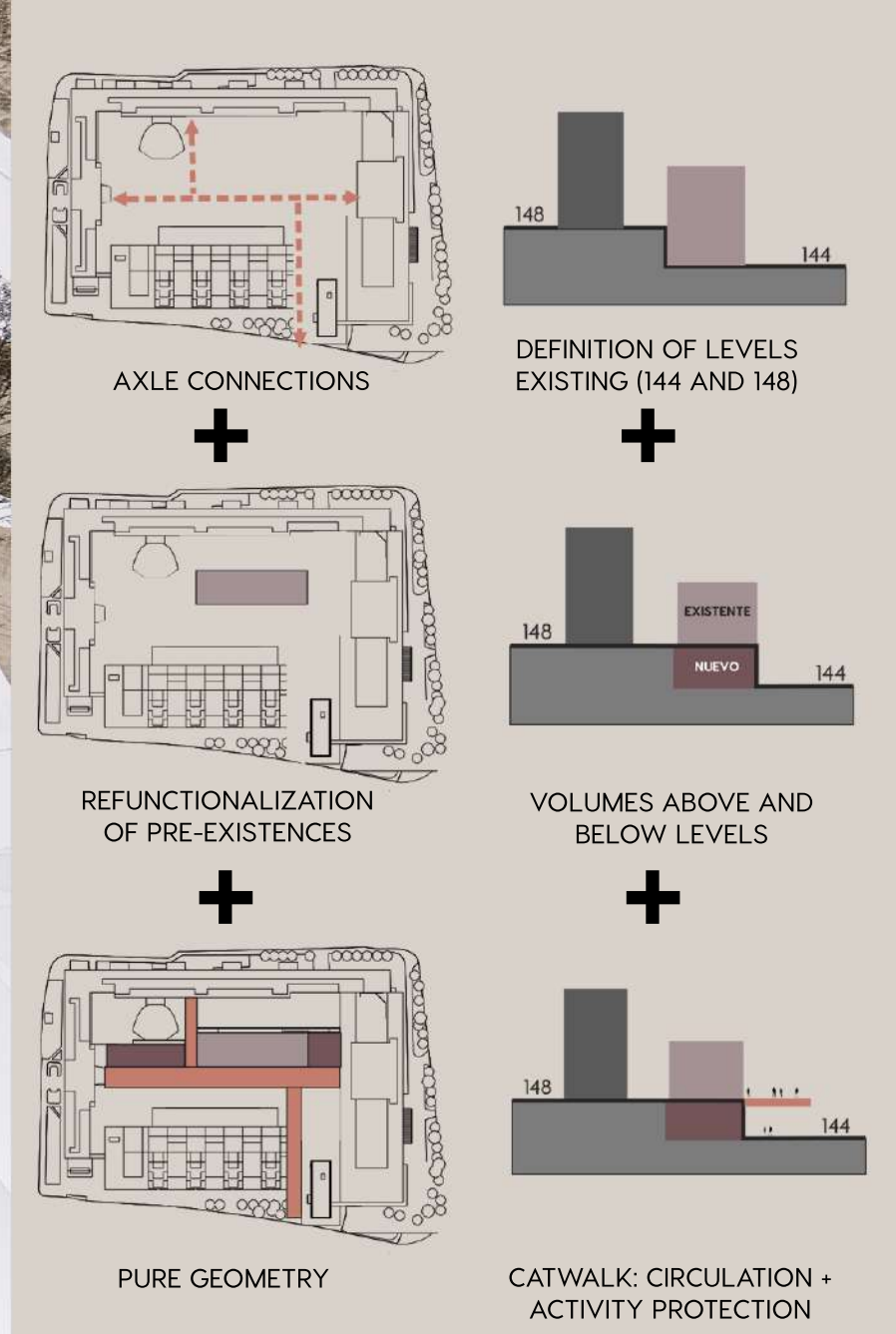
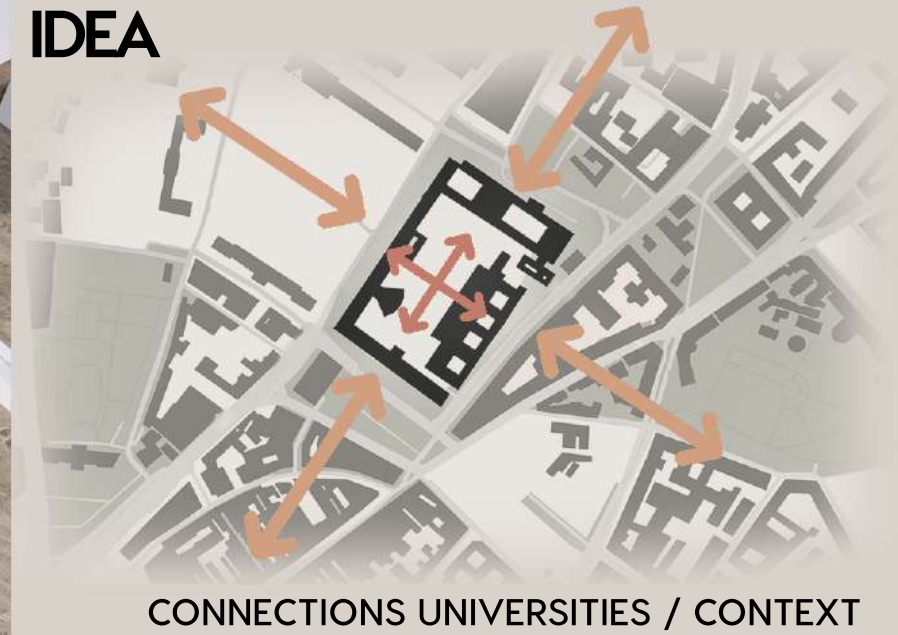
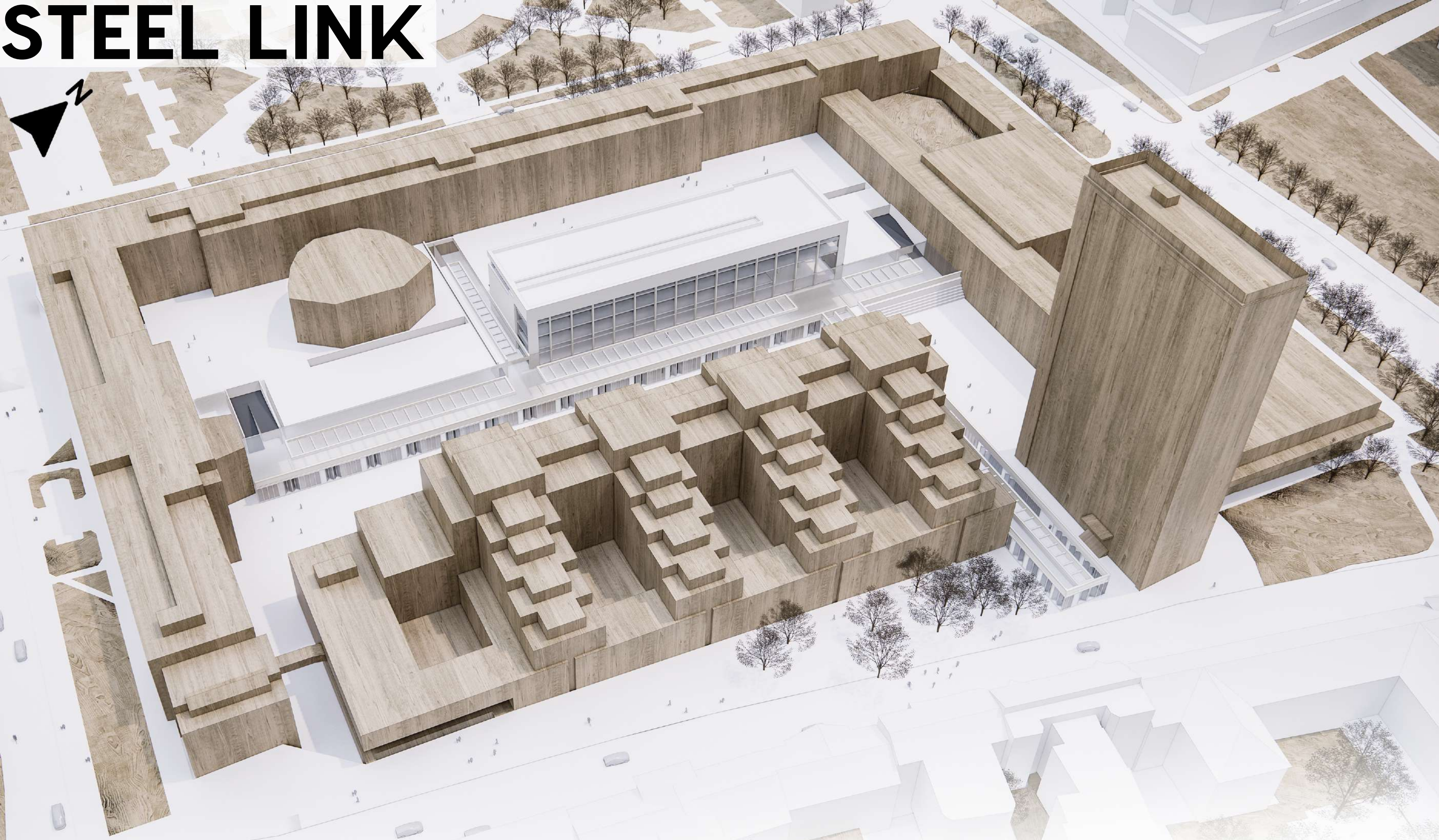
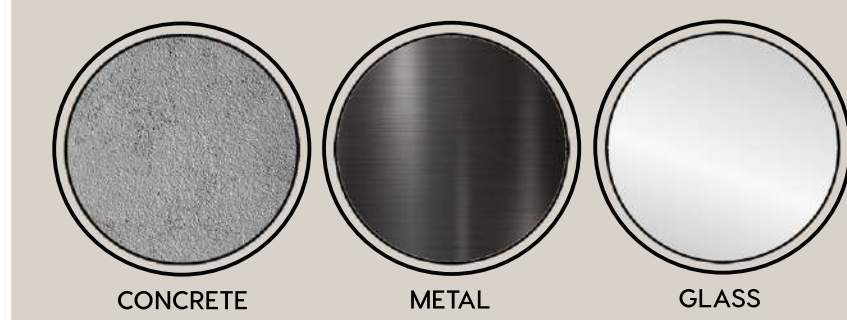


# STEEL LINK



The concept of the project is based on **CIRCULATION LINKS**, which link: city / campus; exterior interior; entrances / circulations; empty full; buildings / overflows. Thus, a spatial sequence of places is generated with a character differentiated. These connectors are passed above and below them, at the bottom semi-covered spaces are generated with activities.

## MATERIALITY



## ACTIVITIES

