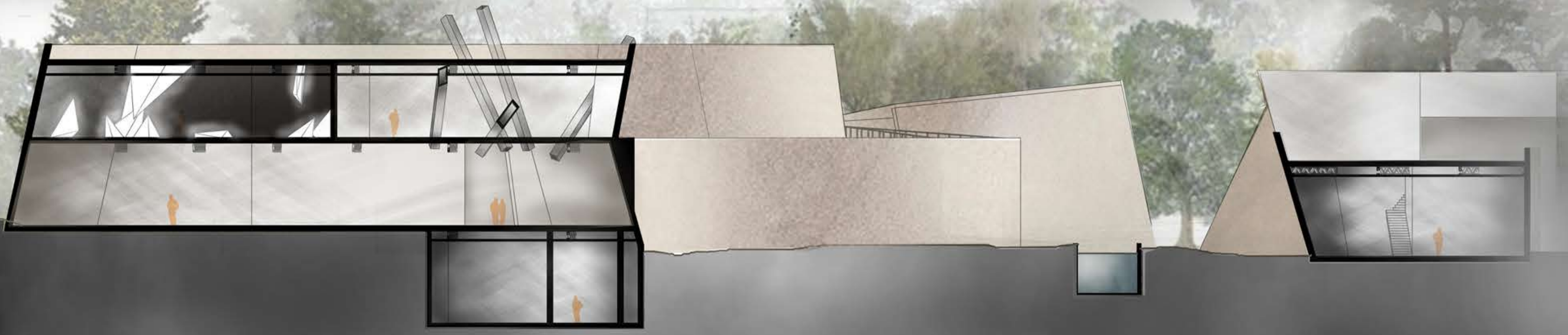
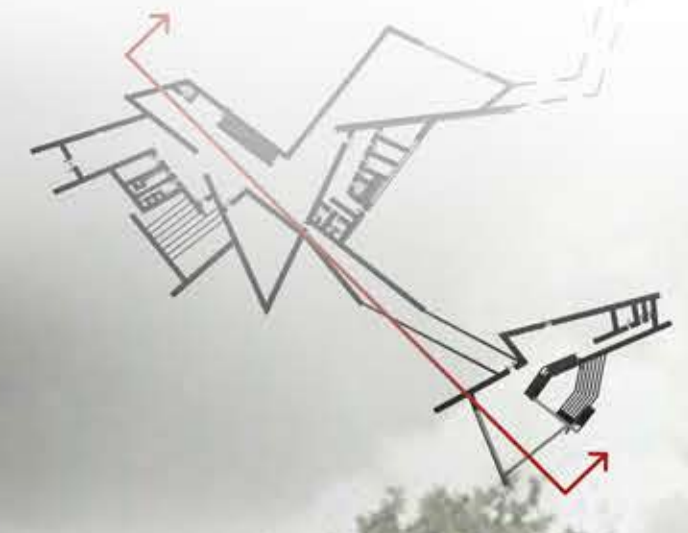


NARRATIVE ARCHITECTURE - KOSOVO WAR MUSEUM AND MEMORIAL

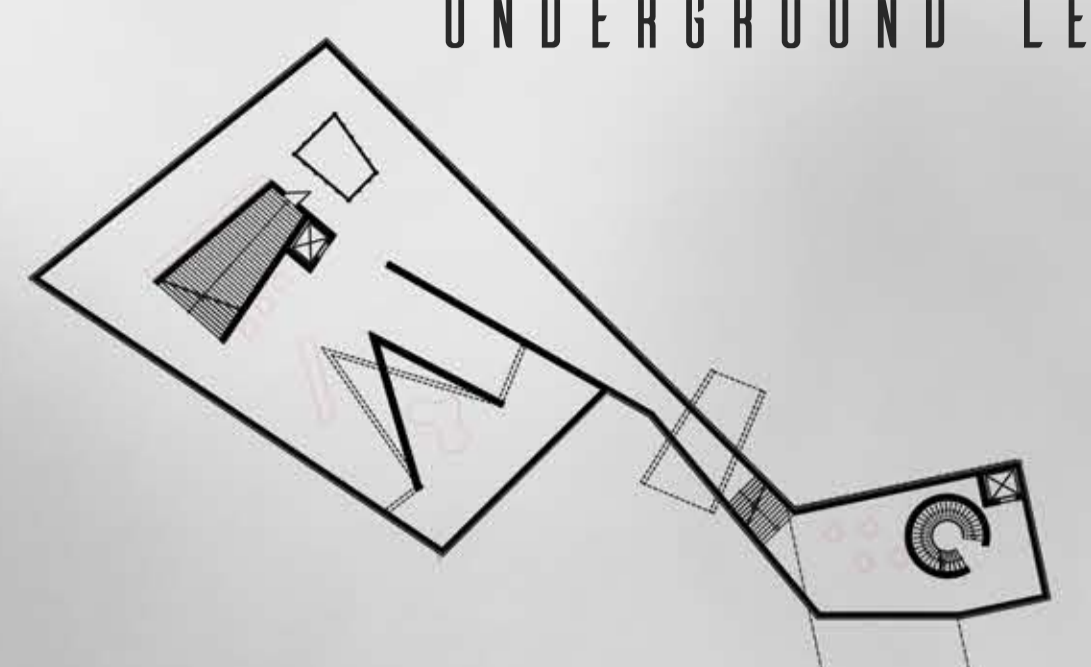
PARK AS PALIMPSEST OF HISTORICAL-MEMORIAL COMPLEX IN PREKZAZ

SECTION

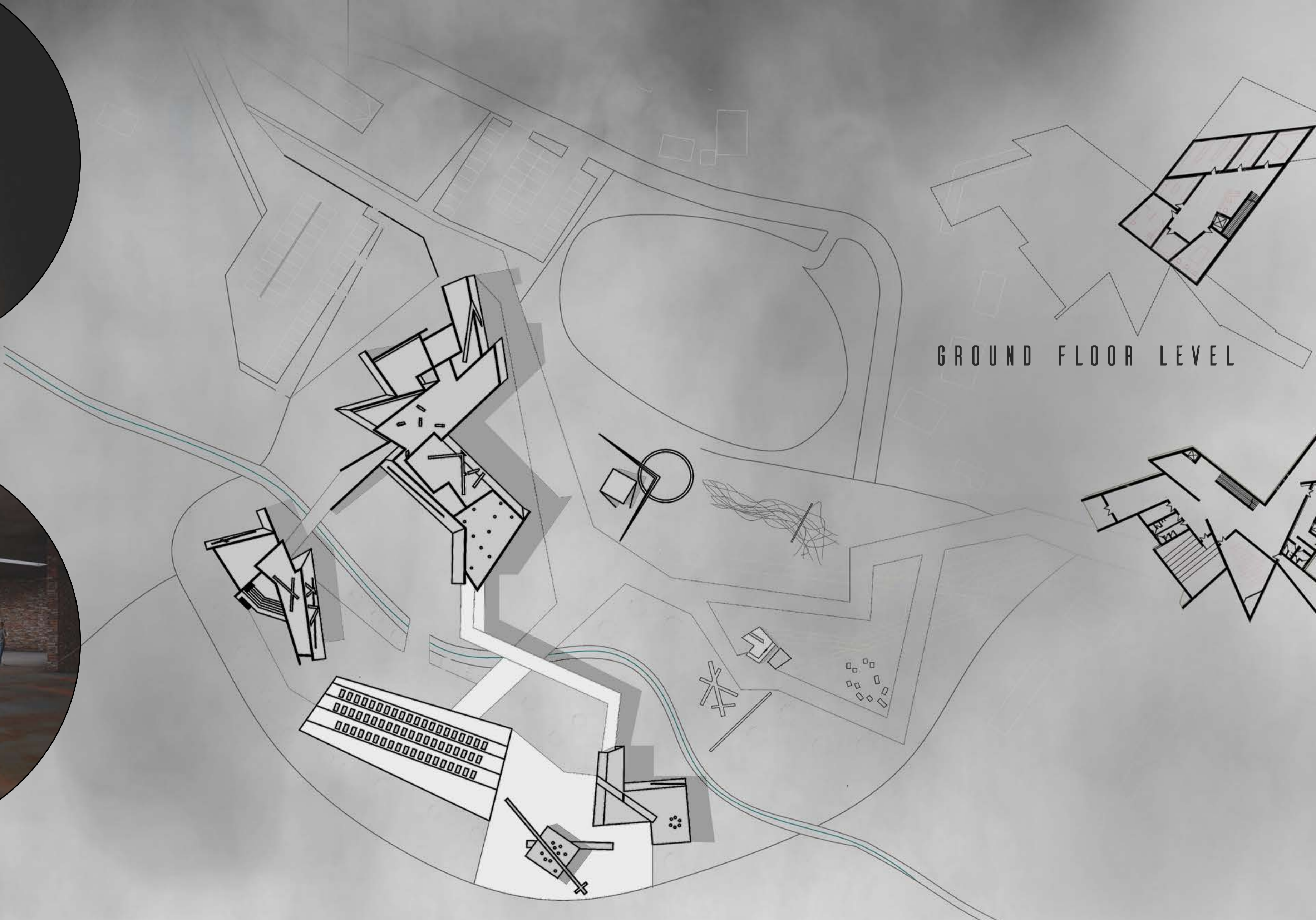
THE THEME OF THE PROJECT IS BASED ON THE MASSIVE AND VIOLENT EXODUS OF OVER 800,000 KOSOVANS DURING THE PERIOD 1998-1999. THIS CAME AS A RESULT OF THE CONFLICT THE FEDERAL REPUBLIC OF YUGOSLAVIA WITH KOSOVO LIBERATION ARMY, NATO AND THE TERRESTRIAL ARMY OF ALBANIA.



UNDERGROUND LEVELS

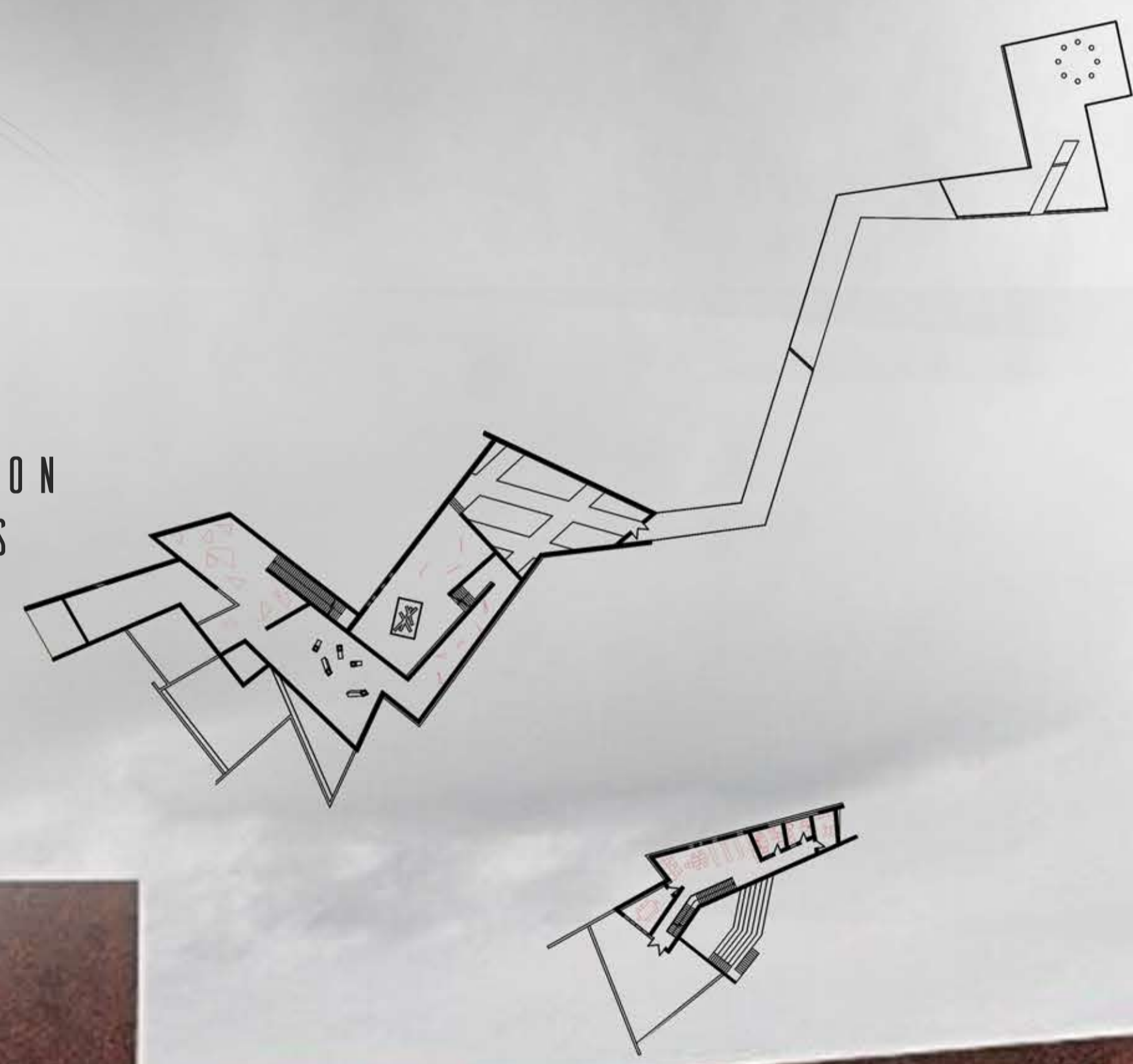


MASTERPLAN

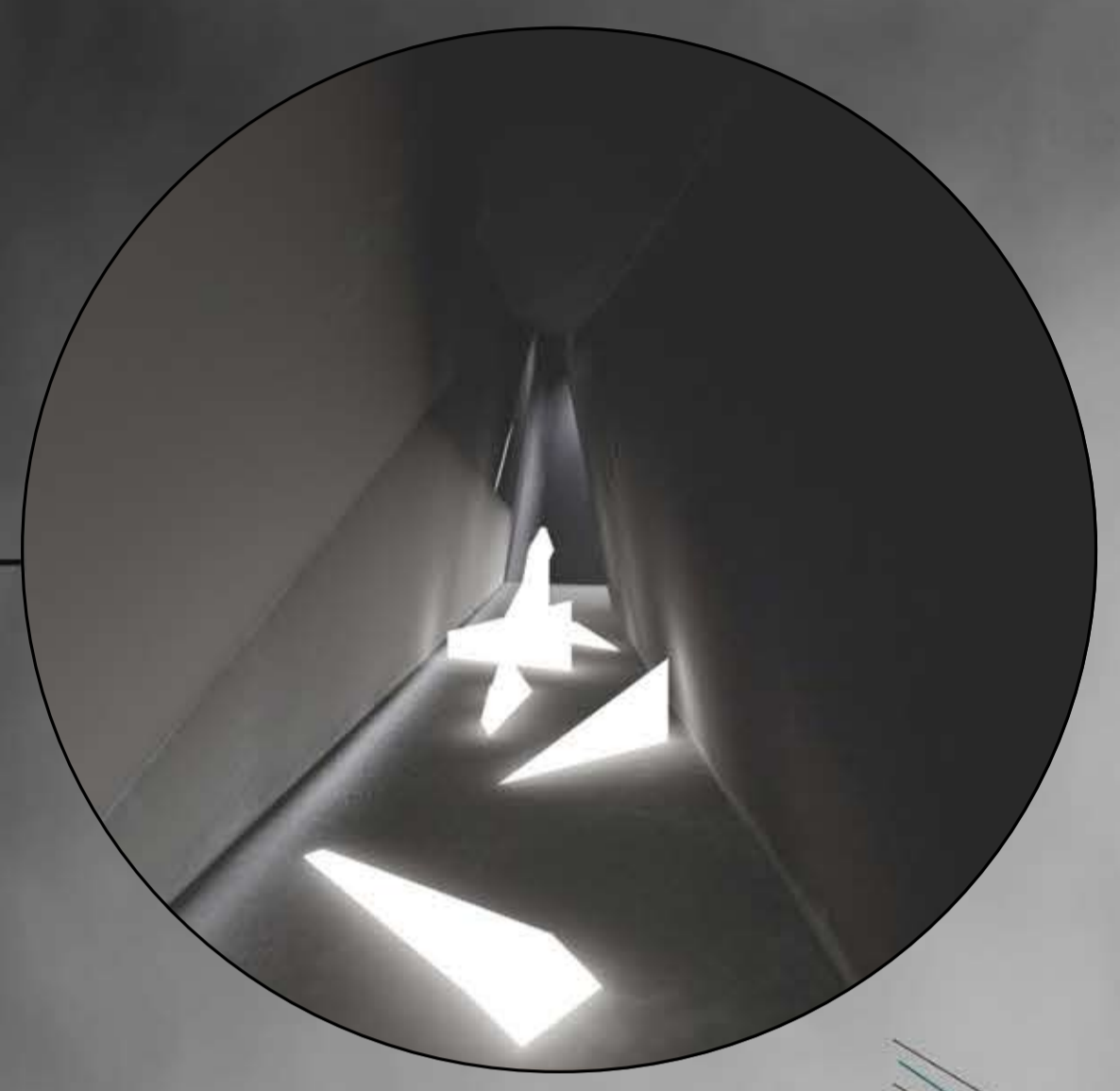


GROUND FLOOR LEVEL

ABOVE GROUND LEVELS



INTERNAL PERSPECTIVES



- CONCEPT - DISTRIBUTION AND TRANSFER OF PARTS OF THE COMPLEX IS SUBJECT TO EXPULSION REPRESENTATION OF OUR INTERNAL STATE AT THE MOMENT WHEN WE SEE PICTURES FROM THE WAR.

- THE LINES DEFINE AND EXPLAIN OUR FEELINGS THAT LATER ON WILL BE USED IN THE INTERPRETATION OF THE CONCEPT TONES IN OUR MUSEUM.

3D MODEL I

