

CAMPUS STU/ INNOVATIVE SCIENCE CENTER

Students:
Ávila, M. Virginia; Miguel, Melannie Karina.

PROJECT NARRATIVE

The main axis of the project establishes its foundations upon the idea of a networked social structure, understanding it as an interconnections system and increasing mobility. The spatial design aims for multifunctional solutions, in order to adjust to the changing urban dynamic and intermodality, considering its diversity. The building project proposal is layed out in three pure volumes, interconnected by a skywalk which contribute to the flow of movement between buildings, achieving a spatial and functional proximity. One of the buildings has a glass roof that serves as a terrace as well. In conjunction with this, an extension of the project it is proposed, by adding two squares on each side of the buildings set, providing a direct connection with the immediate enviroment.

LOCATION

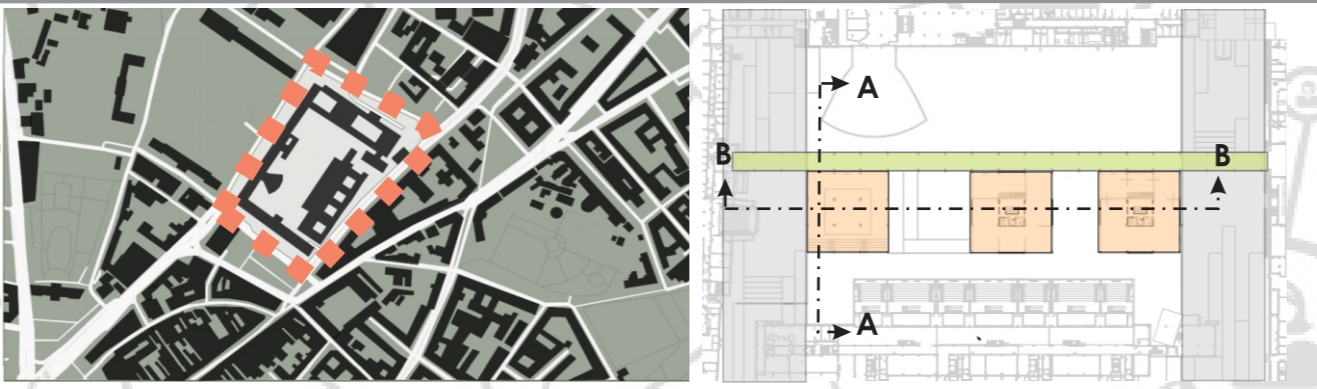


MATERIALS

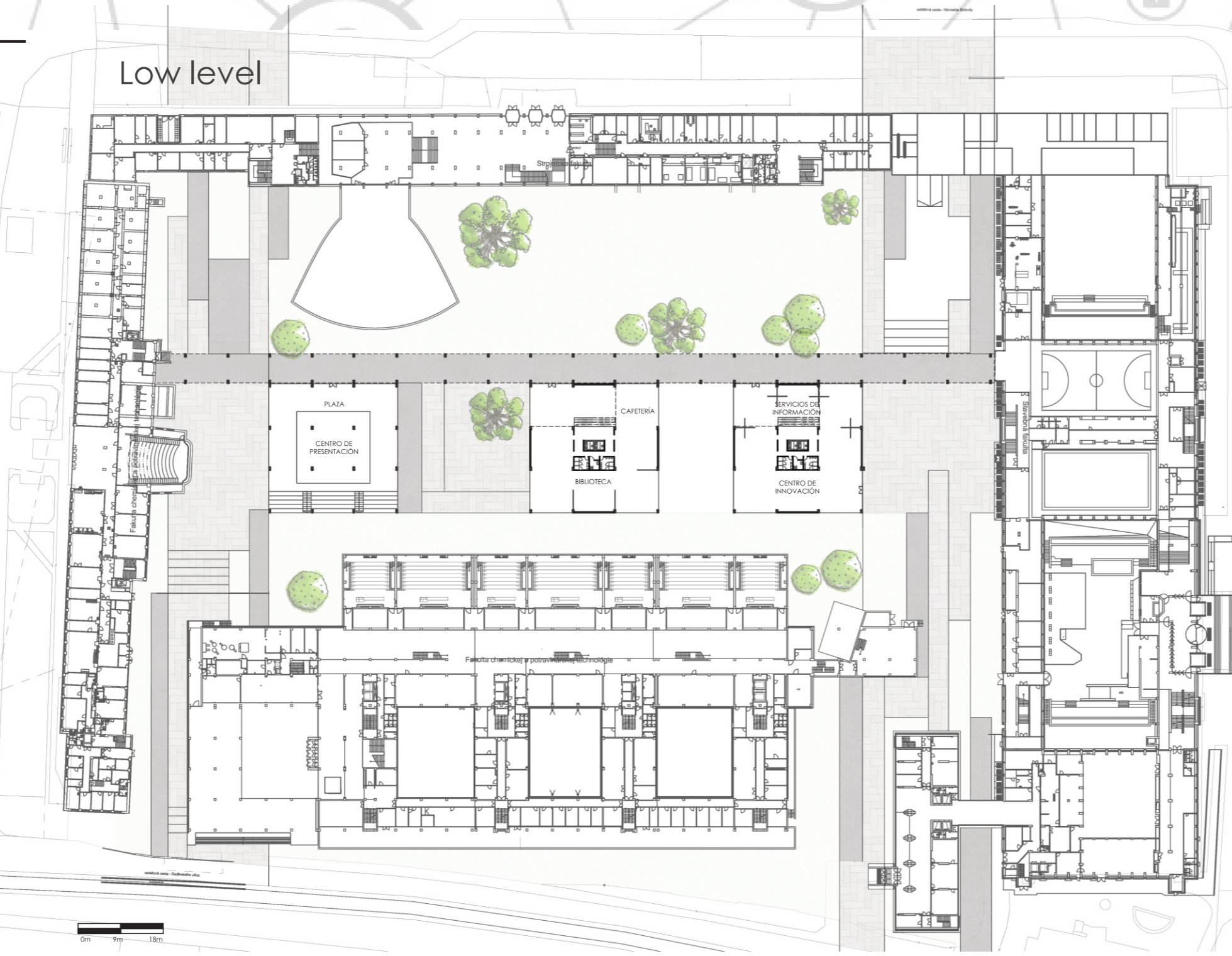


CONCEPT

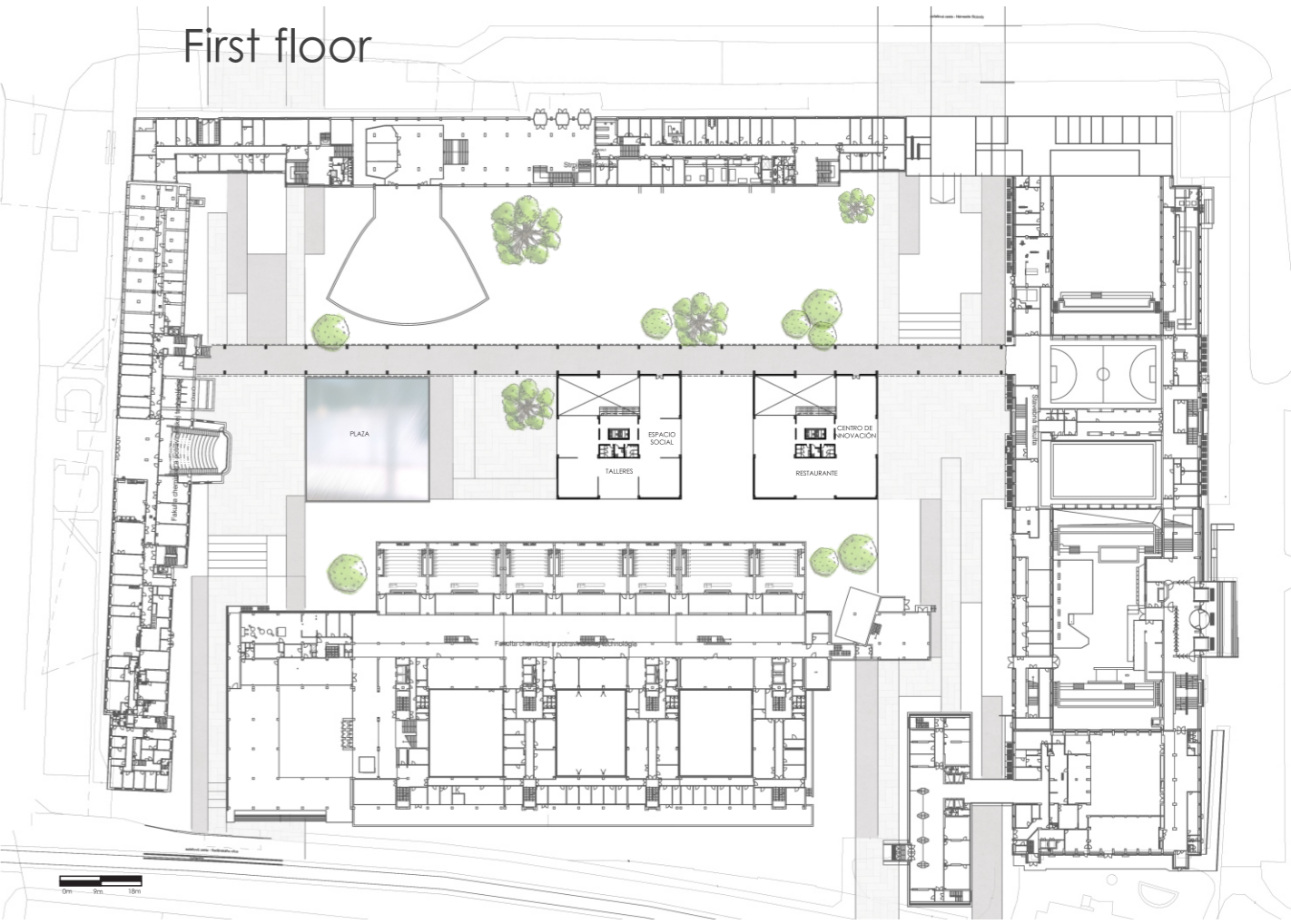
connection
UNION
meeting innovation
multipurpose SOCIAL
continuity skywalk
OPENING link-up
multiplicity **NETWORKS**
FLUENCY
multi-sensorial links set
RECREATION flexibility
COMBINATION
investigation
PERMEABILITY



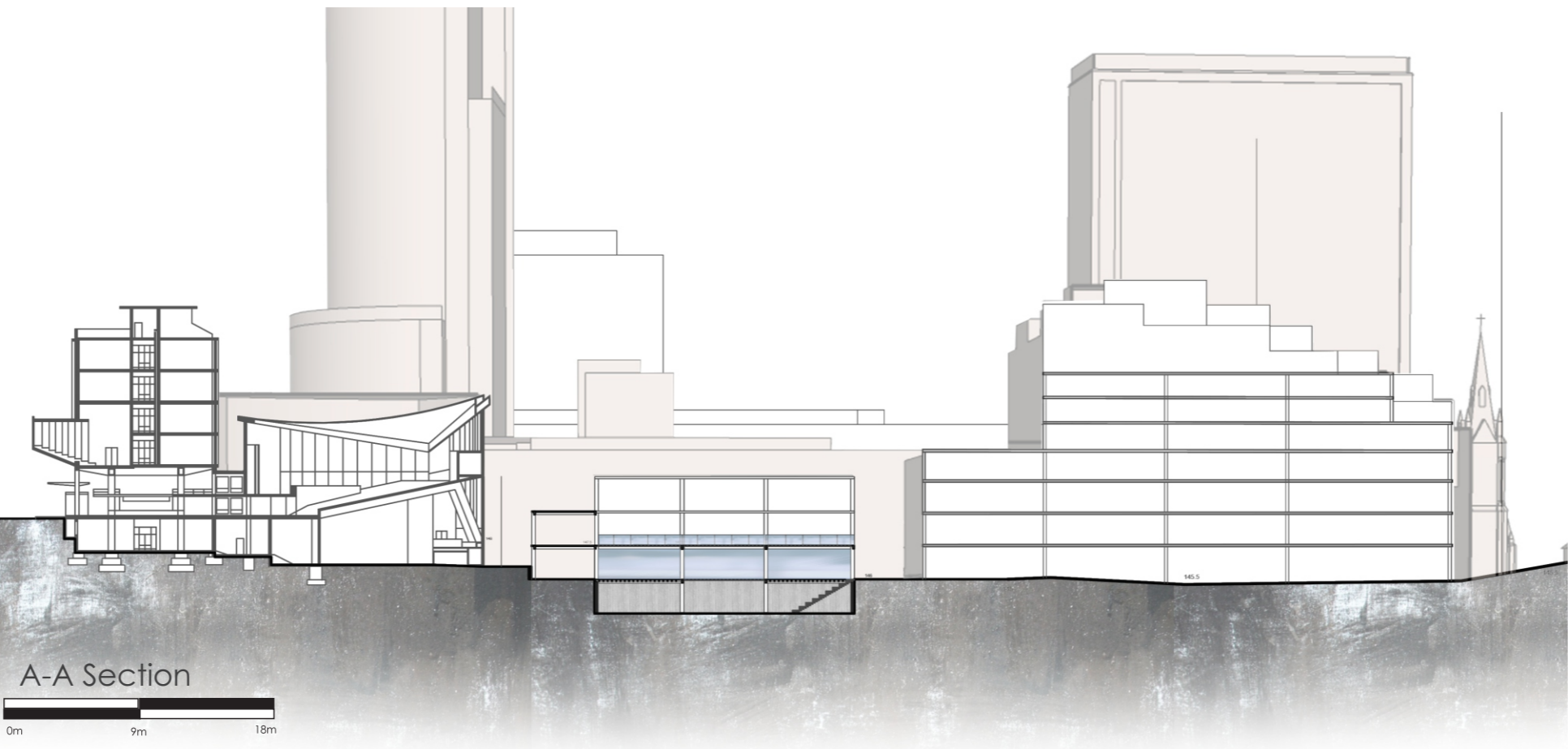
Low level



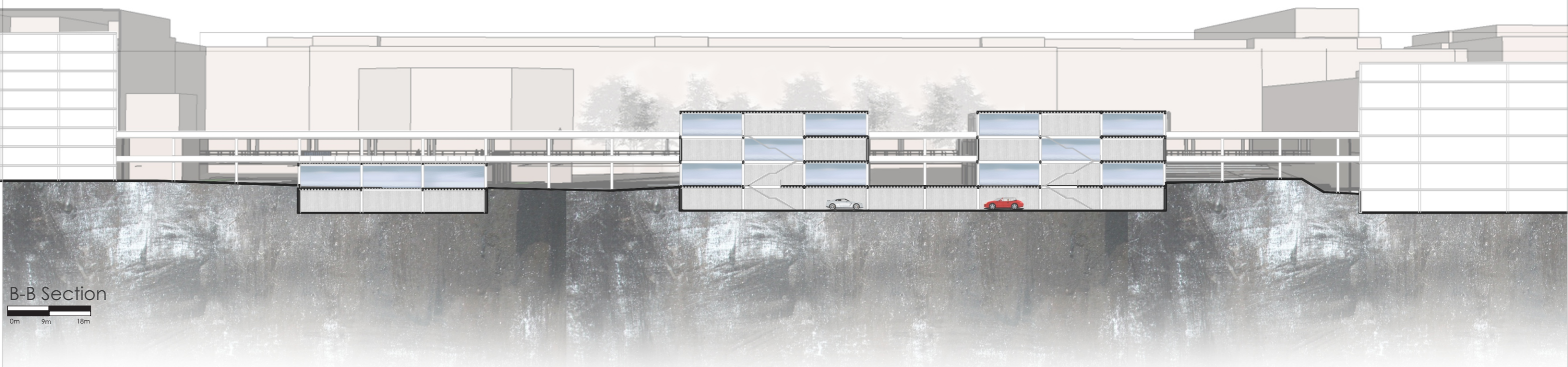
First floor



Second floor



A-A Section



B-B Section

