

AR 2041 - ARCHITECTURAL DESIGN AND DETAILING - IV



GROUP 1

FATHIMA THAMANNA - 190401002

SARASWATHI GOKULAKRISHNAN - 200401001

SEMESTER IV , B.ARCH

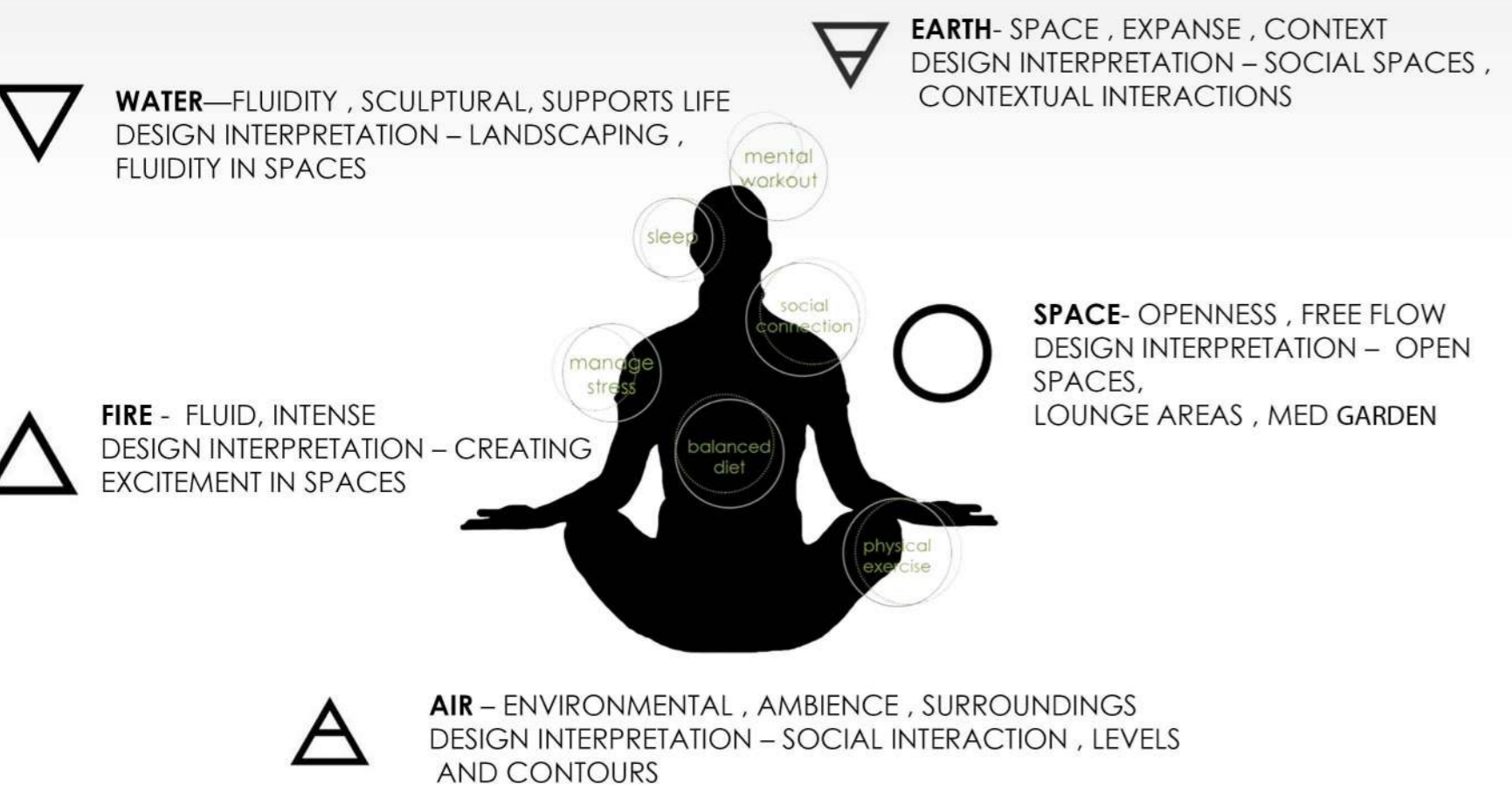


DESIGN DESCRIPTION

- SANATIO HOLISTIC HEALING CENTER WILL BE A SPACE THAT INSPIRES USERS TO HARMONIZE THE MIND, BODY AND SPIRIT THROUGH THE HEALING OF THE NATURE .
- THE FACILITY WILL ATTRACT PEOPLE WHO ARE TRYING TO BETTER THEMSELVES AND THEIR OVERALL WELLBEING.
- IT WILL ALLOW PEOPLE TO PRACTICE OPTIMISM AND REFLECT IT IN THEIR MIND AND BODY.
- IT WILL PROVIDE A VARIETY OF SPACES THAT INFLUENCE DIFFERENT PARTS OF THE BRAIN AND BODY TO MAKE PEOPLE FEEL WHOLE, POSITIVE AND REVITALIZED.

DESIGN CONCEPT AND INSPIRATION

ELEMENTS OF NATURE
EVERYTHING IN NATURE IS MADE UP OF FIVE BASIC ELEMENTS: EARTH, WATER, FIRE, AIR, AND SPACE. THE FIVE ELEMENTS PLAYS A SIGNIFICANT ROLE IN CREATING SERENITY AND IMBUING SURROUNDINGS WITH AN EMOTIONAL ATMOSPHERE



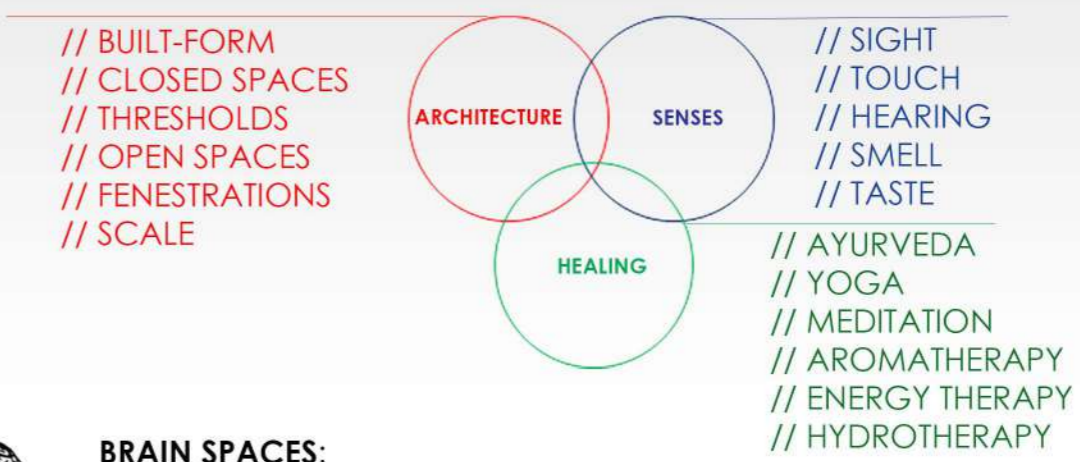
PROJECT LOCATION

THE SITE IS ADJACENT TO UMM SUQEIM STREET , NEIGHBOURING TO MADINAT JUMEIRAH , DUBAI

comfort rejuvenation safety sustainability well-being circulation

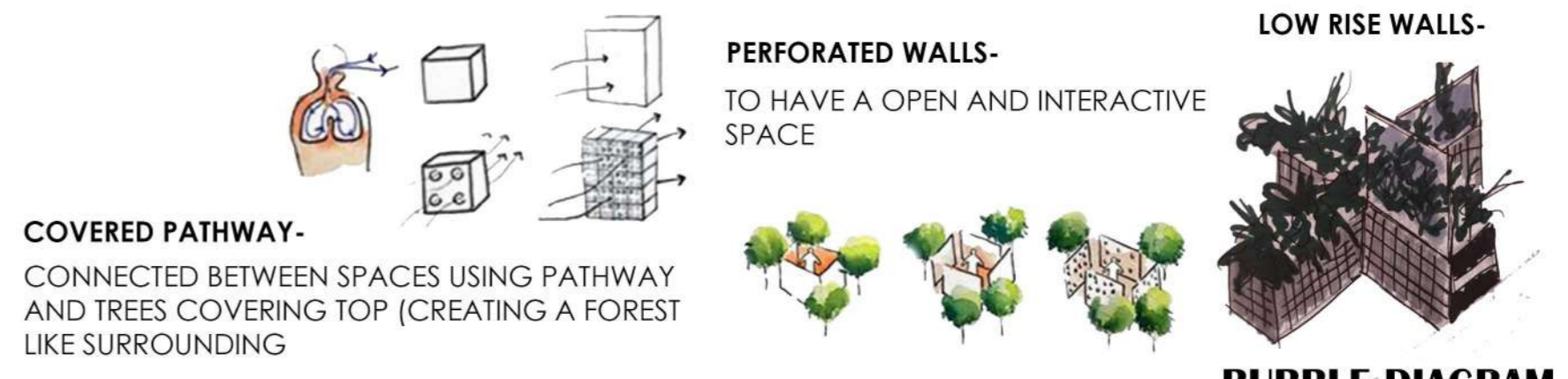
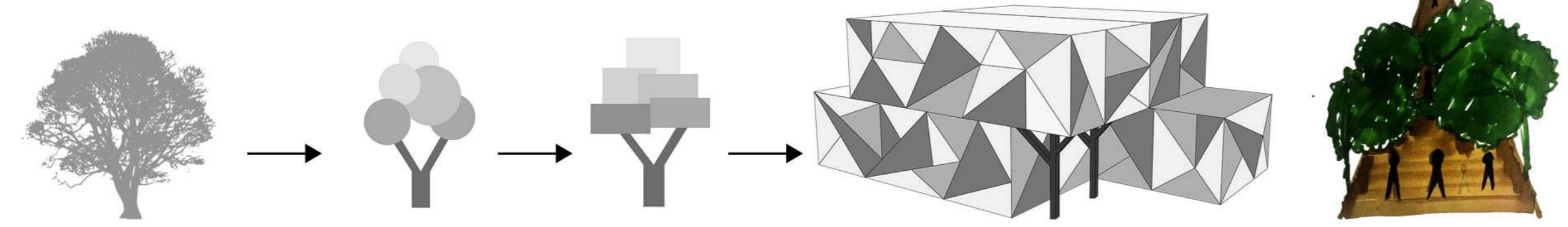
DESIGN ISSUES

HEALTHCARE COSTS ARE CLIMBING AND NON-TRADITIONAL ALTERNATIVES ARE BEING CONSIDERED AS HEALTHFUL OPTIONS. THE DISEASES WE FACE TODAY ARE RELATED TO THE ENVIRONMENTS WE'VE DESIGNED. THE CURRENT DESIGNS OF OUR COMMUNITIES, BUILDINGS AND LIFESTYLES HAVE CREATED NEW HEALTH ISSUES. TYPICALLY, WHEN PEOPLE FOCUS ON PERSONAL WELL-BEING THEY FOCUS ON THEIR PHYSICAL OR MENTAL HEALTH; NOT THE TWO IN TANDEM.



- BRAIN SPACES:** THESE SPACES WILL GENERALLY BE USED TO ENERGIZE AND EXERCISE THE MIND.
- BODY SPACES:** THESE SPACES WILL GENERALLY BE USED TO ENERGIZE AND EXERCISE THE BODY.
- SPIRITUAL SPACES:** THESE SPACES WILL GENERALLY BE USED TO INTERCONNECT THE MIND AND BODY.
- SOCIAL SPACES:** THESE SPACES WILL GENERALLY BE USED TO INTERCONNECT PEOPLE AND PLACE

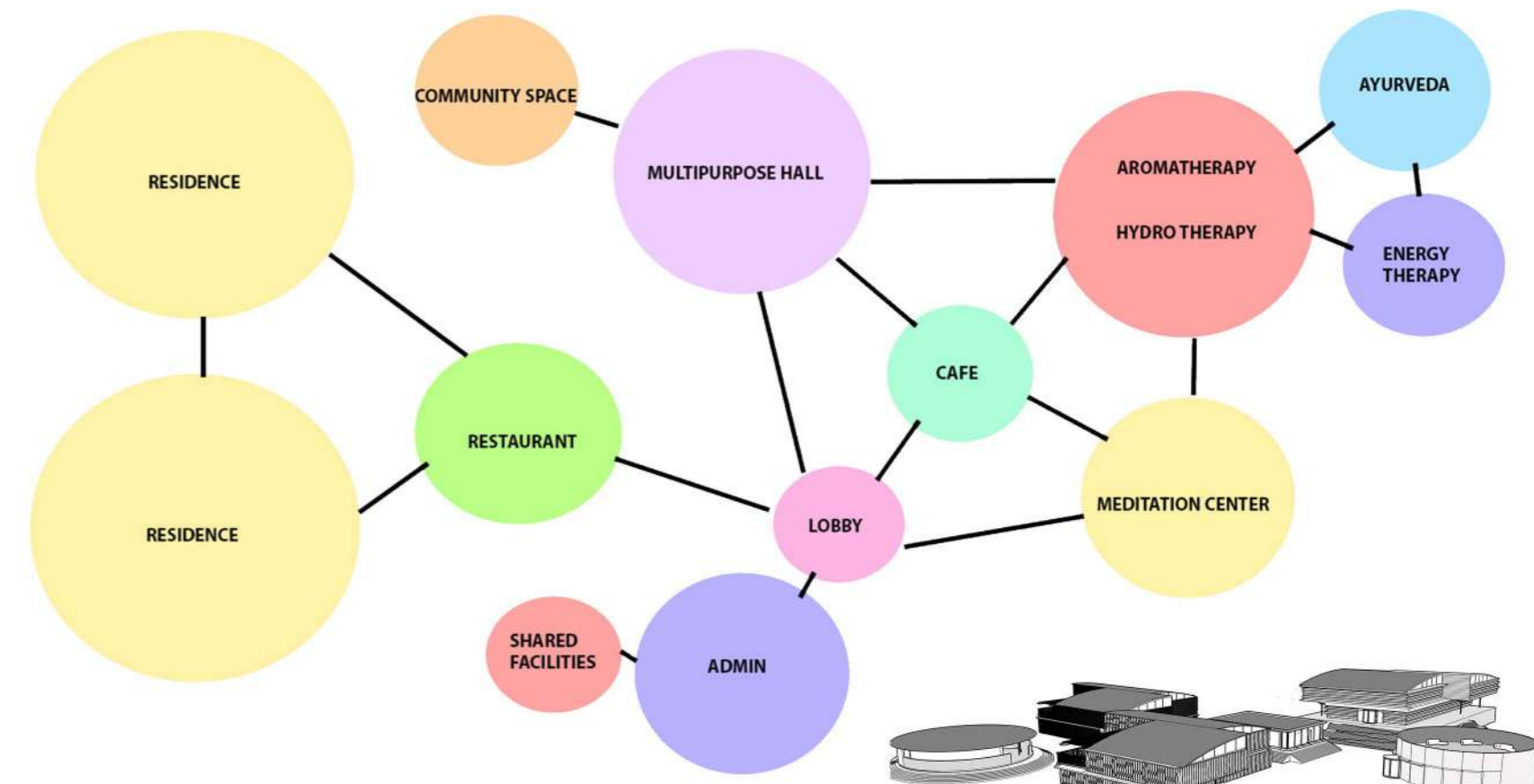
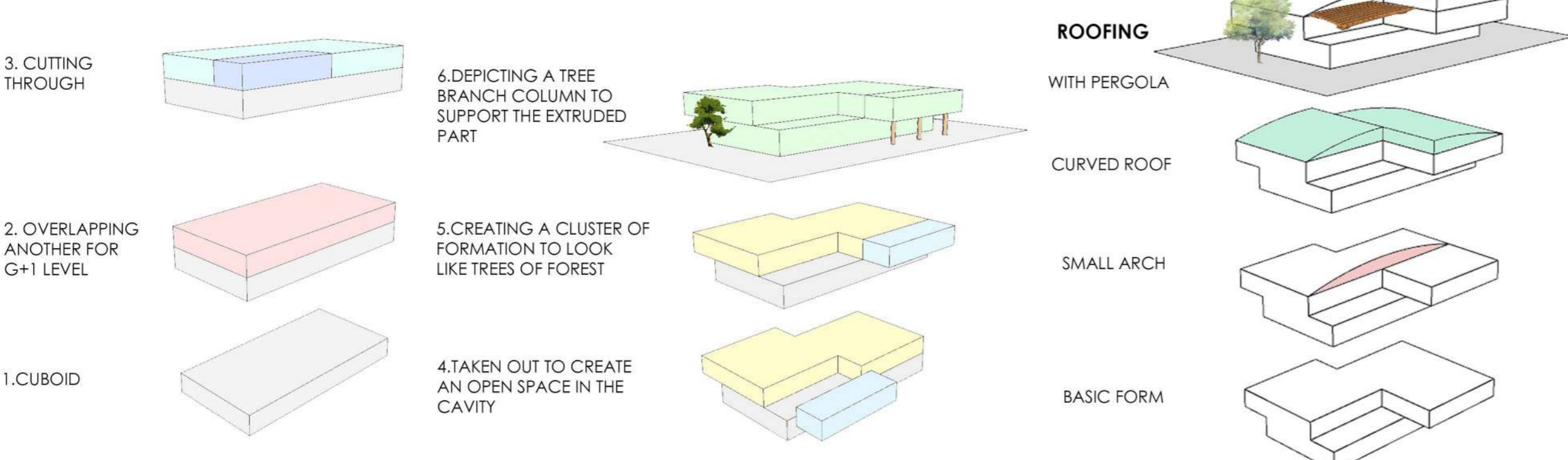
FORM DEVELOPMENT



THE FOREST IS AN ART OF CONNECTING THE NATURE THROUGH OUR SENSES.

CLUSTER FORM - RELATED BY PROXIMITY ALONE TO ARTICULATE AND EXPRESS THEIR VOLUME AS INDIVIDUAL

DESIGN PROCESS





water

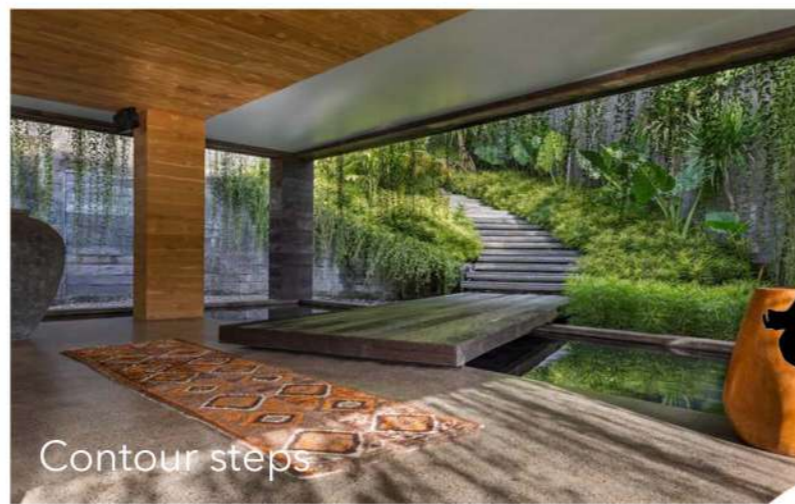
earth

air

fire



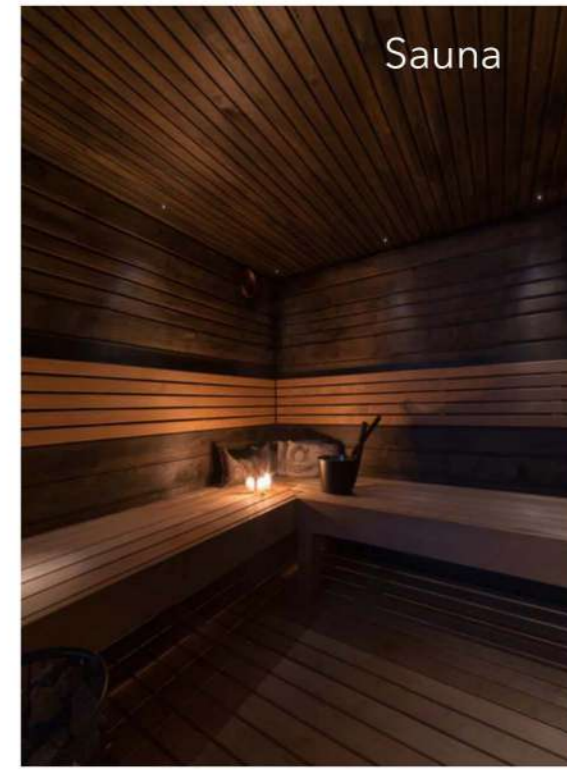
DESIGN ASPIRATION BOARD



- Physical
- Psychological
- Spiritual



space



AL BASTAKIYA, BUR DUBAI

- BASTAKIYA, WHICH IS ALSO CALLED AL FAHIDI HISTORICAL NEIGHBORHOOD, IS A PRESERVED QUARTER OF OLD HOUSES STANDINGS AS THE LAST REMAINING SPECIMENS OF DUBAI'S BYGONE DAYS.

- BASTAKIYA, LOCATED ALONG THE DUBAI CREEK, IS KNOWN FOR ITS TRADITIONAL HOMES, WIND TOWERS, AND LABYRINTH OF NARROW ALLEYS.

-THE TOWN OF AL BASTAKIYA WAS PRIMARILY BUILT BY IMMIGRANTS FROM THE CITY OF BASTAK, PERSIA.

-ONCE MADE OF CORAL , GYPSUM AND SAND BUT NOW RESTORED IN MATERIALS SUCH AS SAND – COLORED CEMENT – ARE TOPPED WITH WIND TOWERS , BUILT TO CAPTURE THE COOL BREEZE AND FORCE THEM INTO THE HOUSES WHILE ALLOWING HOT AIR TO RISE.

- TOTAL AREA- 31,000 SQUARE METERS



TODAY MANY OF THE TRADITIONAL HOMES ARE OPEN TO THE PUBLIC. WHEN YOU ENTER ONE AND STEP INTO ITS INTERIOR COURTYARD, YOU CAN IMAGINE THE BEAUTY AND COMFORT THAT THESE WELL-TO-DO MERCHANTS CREATED FOR THEMSELVES.

- ONE WOULD HAVE TO TURN 90 DEGREES TO SEE THE COURTYARD, ENSURING A GREATER SENSE OF PRIVACY AND MODESTY.



MATERIALS USED IN AL-BASTAKIYA



STONE PAVING

RUGGED FLOORING

CORAL STONES



- THE PLANNING BEHIND BASTAKIYA NEIGHBORHOOD ENCOMPASSED MORE THAN JUST CLIMATE CONTROL THE LAYOUT AND CONSTRUCTION OF THE BUILDINGS, ESPECIALLY THE AL ARISH HOUSES, ALSO UPHOLD THE ISLAMIC PRINCIPLE OF MODESTY.



-IT IS WORTH NOTICING THAT THE BASTAKIYA NEIGHBORHOOD WAS PLANNED TO CONTROL THE WEATHER AS WELL.

- ALL OF THE DISTRICT BUILDINGS FACING SOUTH WEST TOWARDS THE QIBLA.



- BUILT WITH TRADITIONAL BUILDING MATERIALS SUCH AS STONE, GYPSUM, TEAK, SANDAL WOOD, FRONDS AND PALM WOOD ARE ALIGNED SIDE BY SIDE.

-THESE MATERIALS IS THAT THEY ALL HAVE VERY LOW THERMAL CONDUCTIVITY, WHICH MAKES THEM IDEALLY SUITED FOR THE HOT CLIMATE.

- THE WALLS ARE MADE USING CORAL STONES, IT'S A LOCALLY AVAILABLE MATERIAL. POROUS, YET MAKE THE WALLS THICK. IT IS A TRADITIONAL MATERIAL.



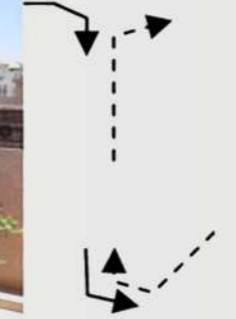
-NARROW STREETS AND HOW CLOSE TO EACH OTHER THE BUILDINGS ARE.BECAUSE PLACING BUILDINGS CLOSER TOGETHER AND SEPARATING THEM BY TIGHT ALLEYS (OR SIKKA) CREATES WIND TUNNELS THAT COOL DOWN THE STREETS AND PROVIDES SHADE AND SHELTER ESPECIALLY IN THE HOT MONTHS OF THE YEAR.



- BY TURNING THE ROTATION OF THE BUILDING IN A CERTAIN ANGLE, THEY COULD MINIMIZE SUNLIGHT COMING INTO THE BUILDING BUT MAXIMIZE LIGHT. THIS SIMPLE TWIST ALLOWS FOR SAVING AIR CONDITIONING AND ALSO ELECTRICITY BY KEEPING THE LIGHTS OFF FOR AS LONG AS POSSIBLE.

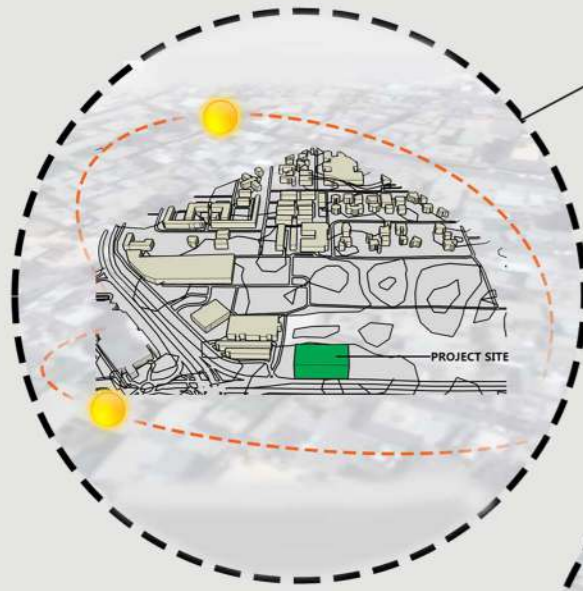
- THE DISTINCTIVE ARCHITECTURAL FEATURE OF BASTAKIYA IS THE WIND TOWER (BARJEEL IN ARABIC). APPARENTLY, EVERY HOUSE IN BASTAKIYA HAS AT LEAST ONE.

-A SYMBOL OF UAE CULTURE AND HERITAGE, THE WIND TOWER IS NOT JUST ORNAMENTATION, BUT AN EARLY FORM OF AIR CONDITIONING.



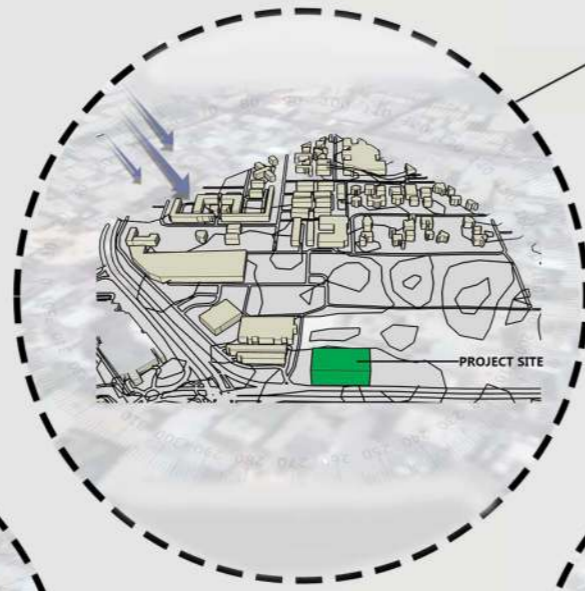
SUN PATH

THE SUN DIRECTION IS FROM EAST TO WEST



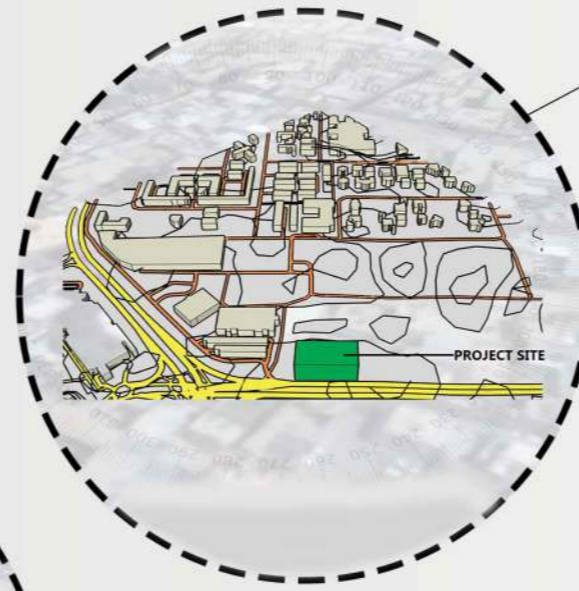
WIND PATH

THE WIND DIRECTION IS FROM NORTH WEST



ROADS

- UMM SUQEIM STREET
- SERVICE ROAD

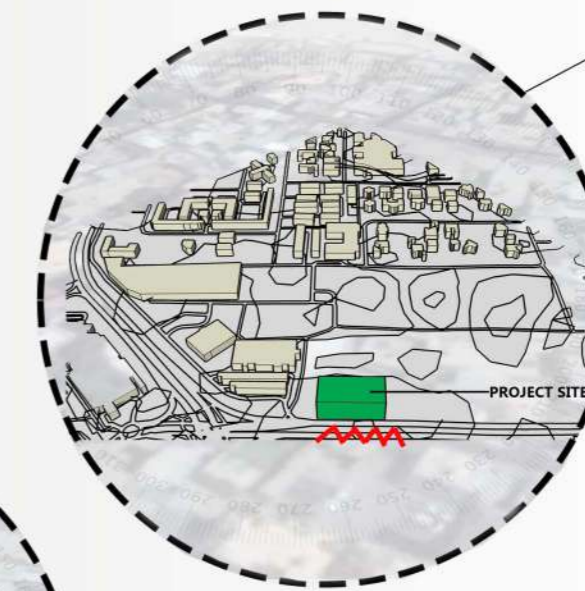


ELECTRIC CHARGING PORTAL BY DEWA- A GREEN AND SUSTAINABLE SOLUTION.

SUSTAINABILITY

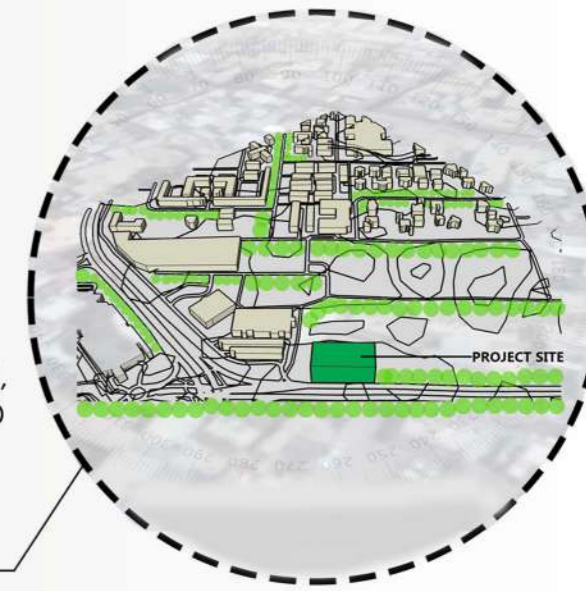
VEHICULAR NOISE

VEHICULAR NOISE
INTRODUCE ANY INSULATOR TO CONTROLLED AND REDUCE NOISES AND AIR POLLUTION FROM TRAFFICS AND HUMAN ACTIVITIES.

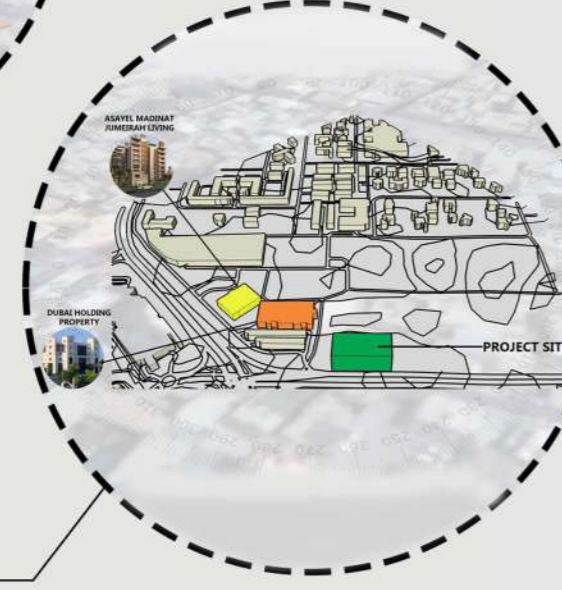


REQUIRES MORE GREEN AREAS AND VEGETATIONS, ESPECIALLY ALONG ROAD AND CIRCULATION, CONGESTED AREA.

VEGETATION

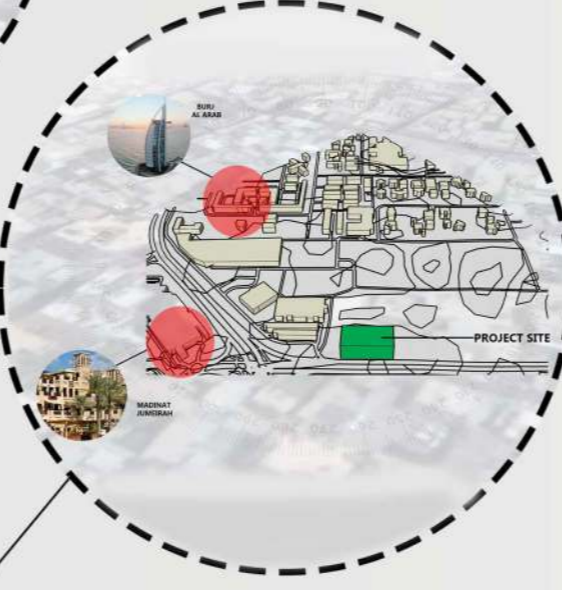


EXISTING STRUCTURES



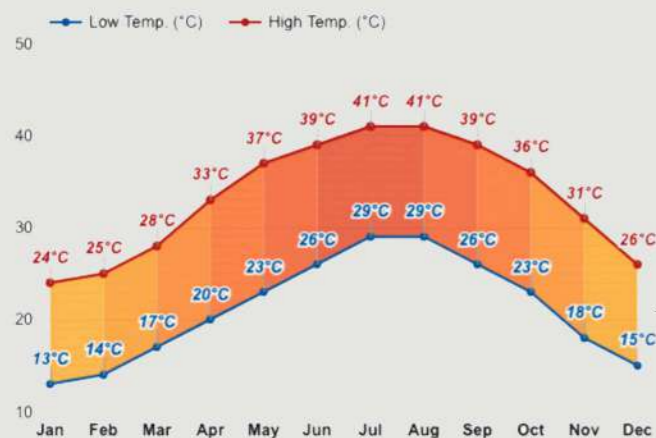
OUTSTANDING FEATURES WITHIN WALKING DISTANCE AND CAN BE RECOGNISED IMMEDIATELY BY LOCALS AND TOURISTS. THESE LANDMARKS AS A WAY-FINDING THAT ARE USED FOR DIRECTIONS AND REFERENCE POINT.

MAJOR LANDMARKS/ VIEWS



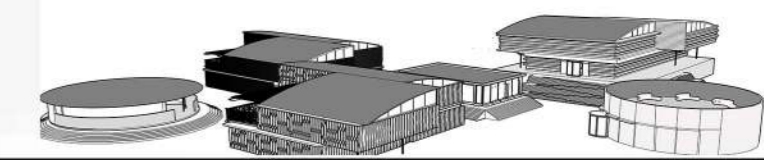
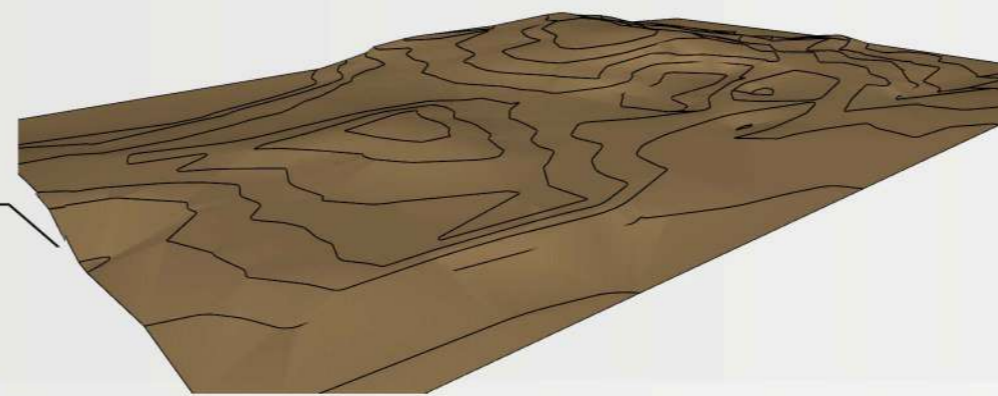
TEMPERATURE

THE LOWEST TEMPERATURE IS 13 DEGREE CELSIUS AND HIGHEST TEMPERATURE IS 41 DEGREE CELSIUS.



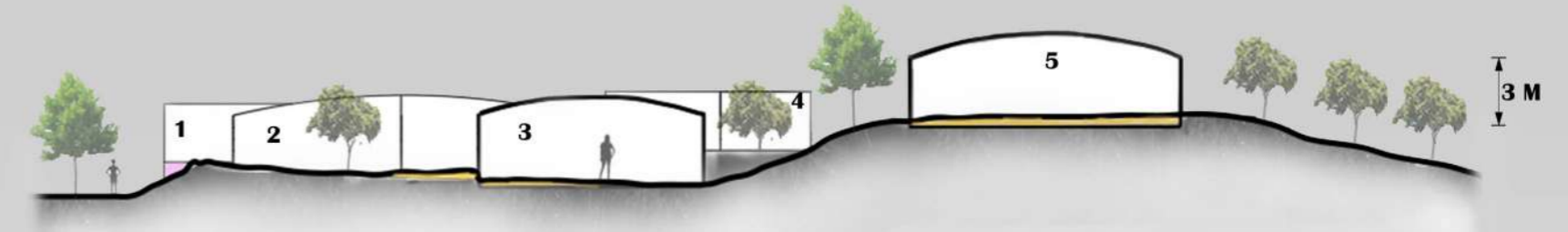
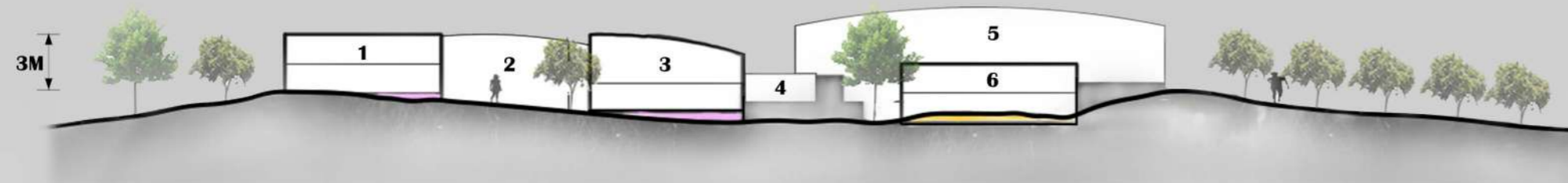
CONTOUR MODEL

THE CONTOURS VARY FROM +5 TO +12.



SECTION AA

SECTION BB



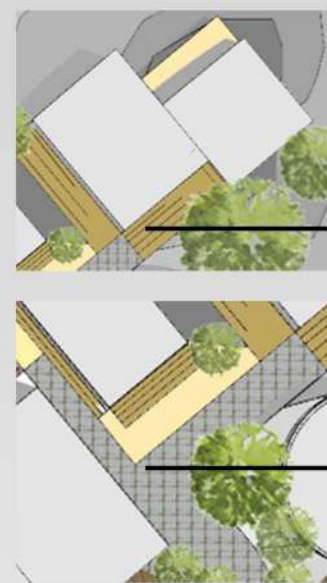
- CUTTING
- FILLING

1. RESTAURANT (+10 CONTOUR)
2. COMUNUNITY SPACE (+8 CONTOUR)
3. LOBBY AND ADMINISTRATION (+8 CONTOUR)
4. CAFE (+10 CONTOUR)
5. THERAPIES (+11 CONTOUR)
6. MEDITATION CENTER (+8 CONTOUR)

SCALE- 1:250

1. RESTAURANT (+10 CONTOUR)
2. COMMUNITY SPACE (+8 CONTOUR)
3. LOBBY AND ADMINISTRATION (+8 CONTOUR)
4. CAFE (+10 CONTOUR)
5. THERAPIES (+11 CONTOUR)

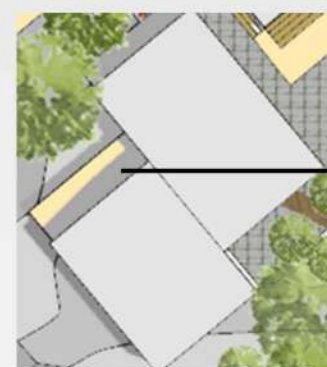
DESIGN ELEMENTS



STRAMP



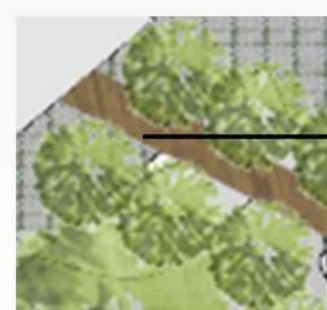
PAVEMENT WITH GREENS



WATER FEATURE



PERGOLA



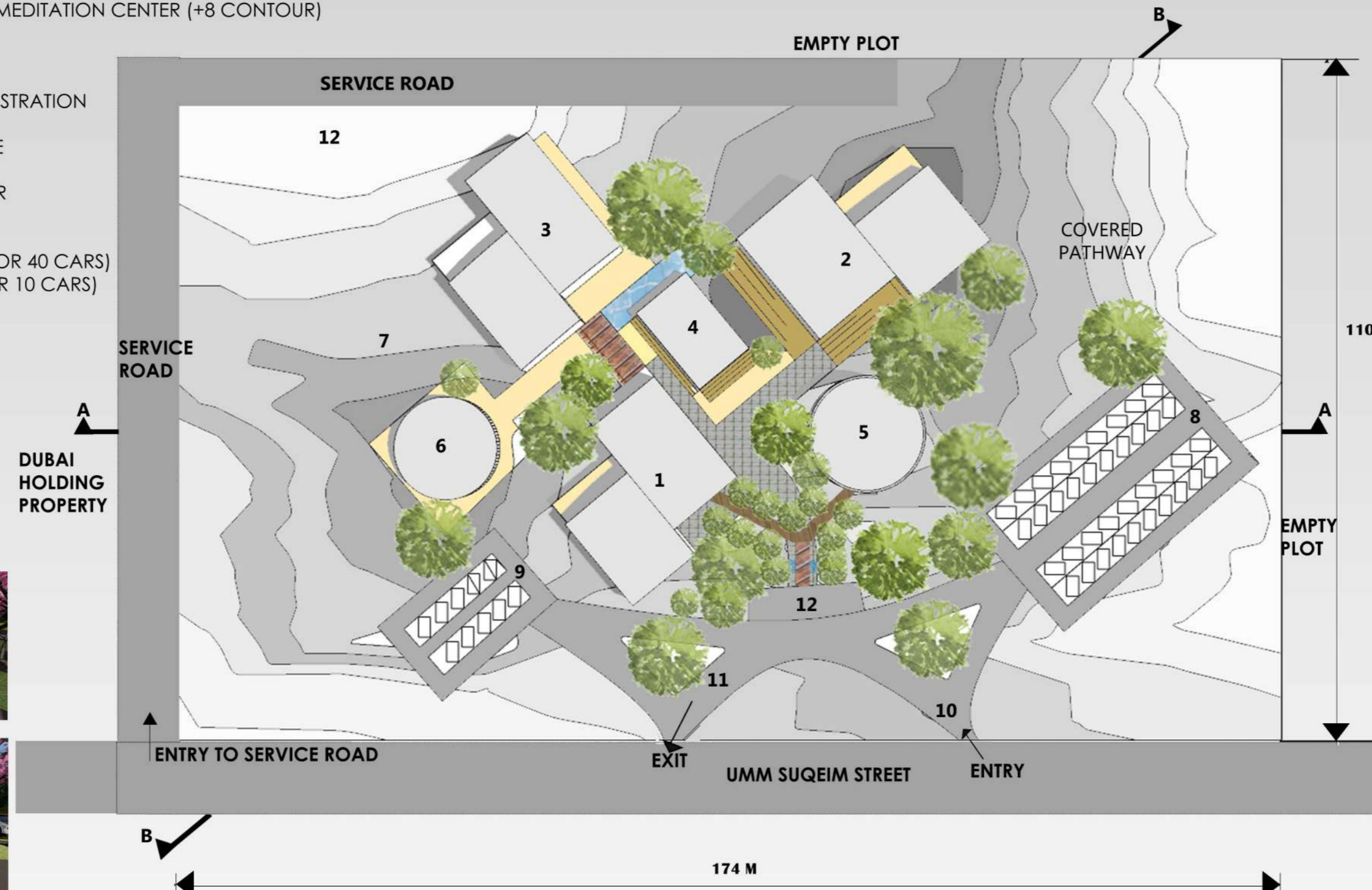
BRIDGE

COVERED PATHWAY

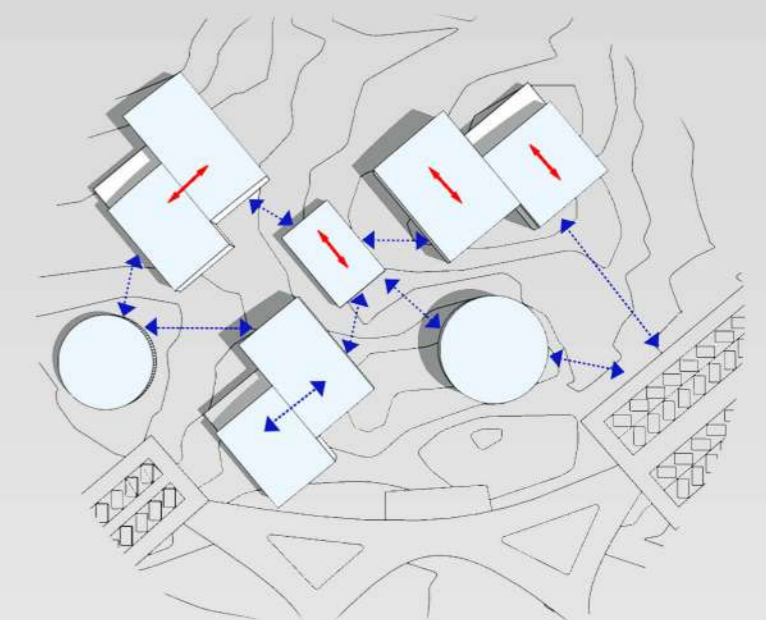
LEGEND

1. LOBBY AND ADMINISTRATION
2. THERAPIES
3. COMMUNITY SPACE
4. CAFE
5. MEDITATION CENTER
6. RESTAURANT
7. RESIDENCE
8. PUBLIC PARKING (FOR 40 CARS)
9. STAFF PARKING (FOR 10 CARS)
10. ENTRANCE ROAD
11. EXIT ROAD
12. DROP OFF POINT

PARKING RENDERS

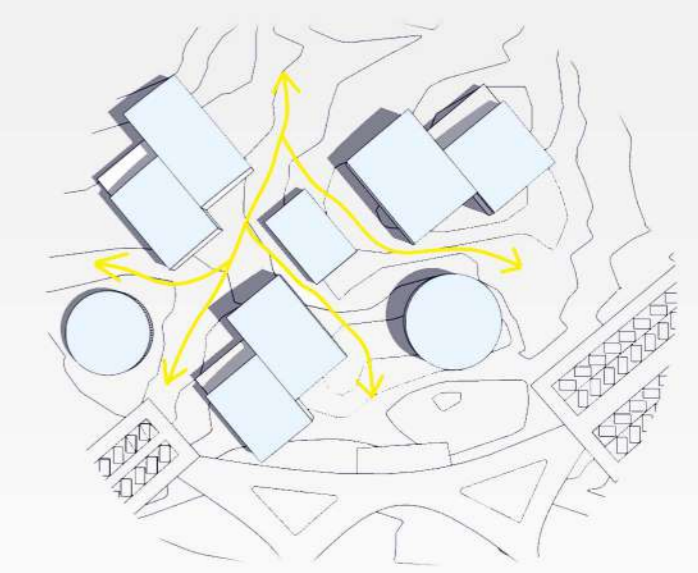


ACCESSES



- DIRECT ACCESS
- INDIRECT ACCESS

MOVEMENT



MOVEMENT

SITE DETAILS

- THE SITE IS LOCATED IN JUMEIRAH, DUBAI, UAE.
- THE SITE DIMENSION IS 110 M X 174 M.
- TO THE WEST OF THE SITE, THERE IS THE DUBAI HOLDING PROPERTY.
- TO THE NORTH AND EAST OF THE SITE, ARE EMPTY PLOTS.
- TOWARDS THE SOUTH OF THE SITE, THERE IS THE MAIN ROAD- UMM SUQEIM STREET
- IN BETWEEN THE DUBAI HOLDING PROPERTY AND THE SITE, THERE IS A SERVICE ROAD.
- THE MAJOR LANDMARKS/ VIEWS OF THE SITE ARE BURJ AL ARAB AND MADINAT JUMEIRAH.
- THE SITE IS A CONTOURED SITE.
- THE CONTOURS VARY FROM +5 TO +12 METERS.

SITE ACCESSIBILITY



300 M FROM BURJ AL ARAB HOTEL- 2



28.4 KM FROM DUBAI AIRPORT TERMINAL 3



4.1 KM FROM UMM AL SHEIF METRO STATION



4.8 KM FROM TRAM DEPOT, DUBAI





- THE LOBBY SPACE PROVIDES SERVICES TO THE VISITORS WITH IT'S GOOD AMBIENCE THAT PLEASURES THE PEOPLE AND A COZY SEATING WHICH ALLOWS PEOPLE TO LOUNGE IN.

- THE ADMINISTRATION OFFICE PROVIDES THE STAFF MEMBERS TO WORK IN A INTERACTIVE ATMOSPHERE WHICH INCLUDES LOW RISE WALLS FOR OPENNESS.

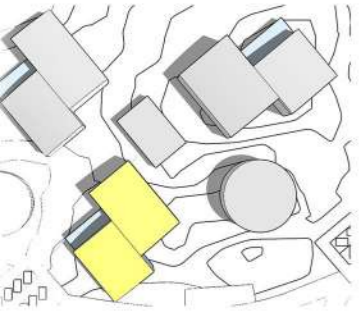
- THE FIRST FLOOR PROVIDES THE STAFF MEMBERS TO REFRESH THEMSELVES IN A SERENE ATMOSPHERE. AND PROVIDES SEATING AREA FOR RELAXATION.

- THIS BUILDING DEPICTS THE **ELEMENT FIRE**.

- IT IS A FEELING OF VIBRANCY, ALIVENESS AND ENGAGEMENT, RELATING TO OTHERS WITH APPRECIATION.

- IT IS ALL ABOUT PASSION, VITALITY, AND EXPANSION.

- FIRE IS THE PART OF NATURE THAT TRANSFORMS ONE STATE OF MATTER INTO ANOTHER. IT HAS THE POWER TO TRANSFORM, BURN AND ILLUMINE.



FLOOR PLAN - GROUND FLOOR



LOBBY

1. RECEPTION
2. WAITING AREA
3. ACCESSIBILITY TOILET (1.8M x 1.5M)
4. LADIES TOILET (2.9M x 2.5M)
5. GENTS TOILET (2.9M x 2.5M)

ADMIN

6. SECRETARY
7. MANAGER (3.9M x 2.2M)
8. DIRECTOR OFFICE (4.3M x 4M)
9. GENTS RESTROOM (4.3M x 2.7M)
10. LADIES RESTROOM (4.3M x 2.7M)
11. ACCOUNTS
12. FACILITIES
13. SALES
14. HR
15. STAFF LOUNGE
16. MEETING ROOM (4.2M x 3.5M)
17. SERVER ROOM (3.5M x 4M)

SCALE- 1:100

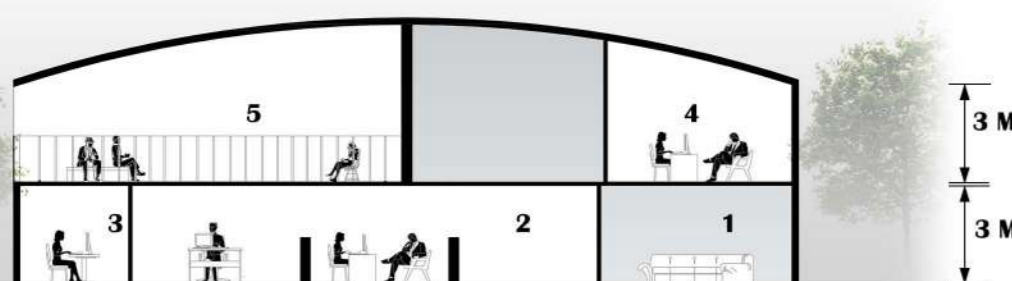
FLOOR PLAN - FIRST FLOOR

SHARED FACILITIES

1. STAFF LOUNGE
2. MEETING ROOM (12.3M x 5.9M)
3. STAFF CHANGING ROOM- GENTS (5M x 4.6M)
4. ACCESSIBTY TOILET (2.9M x 1.8M)
5. STAFF CHANGING ROOM -LADIES (5M x 4.6M)
6. GENTS RESTROOM (3.4M x 2.9M)
7. LADIES RESTROOM (3.5M x 3M)
8. STAFF CANTEEN (5.9M x 4.9M)
9. STAFF PANTRY (6.3M x 4.9M)
10. OUTSIDE SEATING SPACE (PERGOLA COVERED)



BUILDING SECTION



1. LOBBY
2. ADMIN
3. SERVER ROOM
4. LOUNGE AREA
5. BALCONY WITH PERGOLA

SCALE- 1:100

EXTERIOR VIEWS

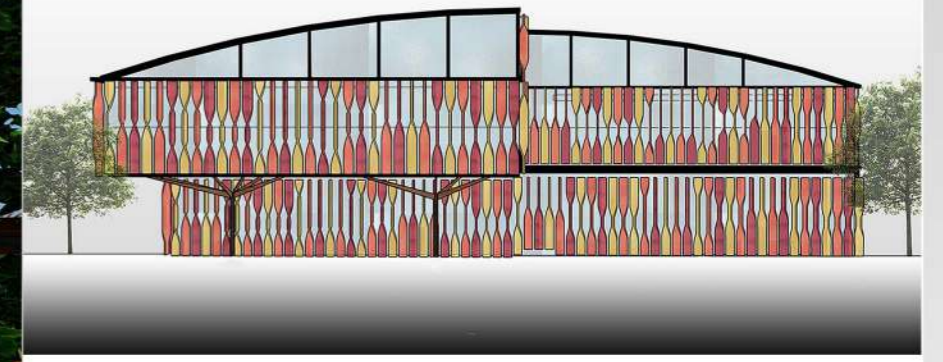


INTERNAL

ADMIN

LOBBY

ELEVATION



SIDE ELEVATION- SOUTH

FACADE



DEPICTING THE ELEMENT FIRE (RED ALUMINIUM)

MATERIALS USED



COLOUR PALETTE



ADMINISTRATION

04

LOBBY



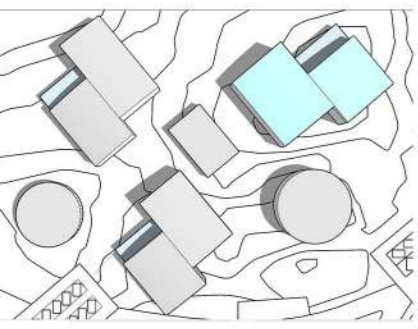
- THIS SPACE PROVIDES EFFECTIVE TREATMENT FACILITIES SUCH AS AYURVEDA, AROMATHERAPY, HYDRO-THERAPY AND ENERGY-THERAPY WHICH GIVES AN AUTHENTIC AND HOLISTIC APPROACH TO NATURAL HEALTH.

- NATURAL WAY TO RELAX, REJUVENATE, AND DETOXYFY.

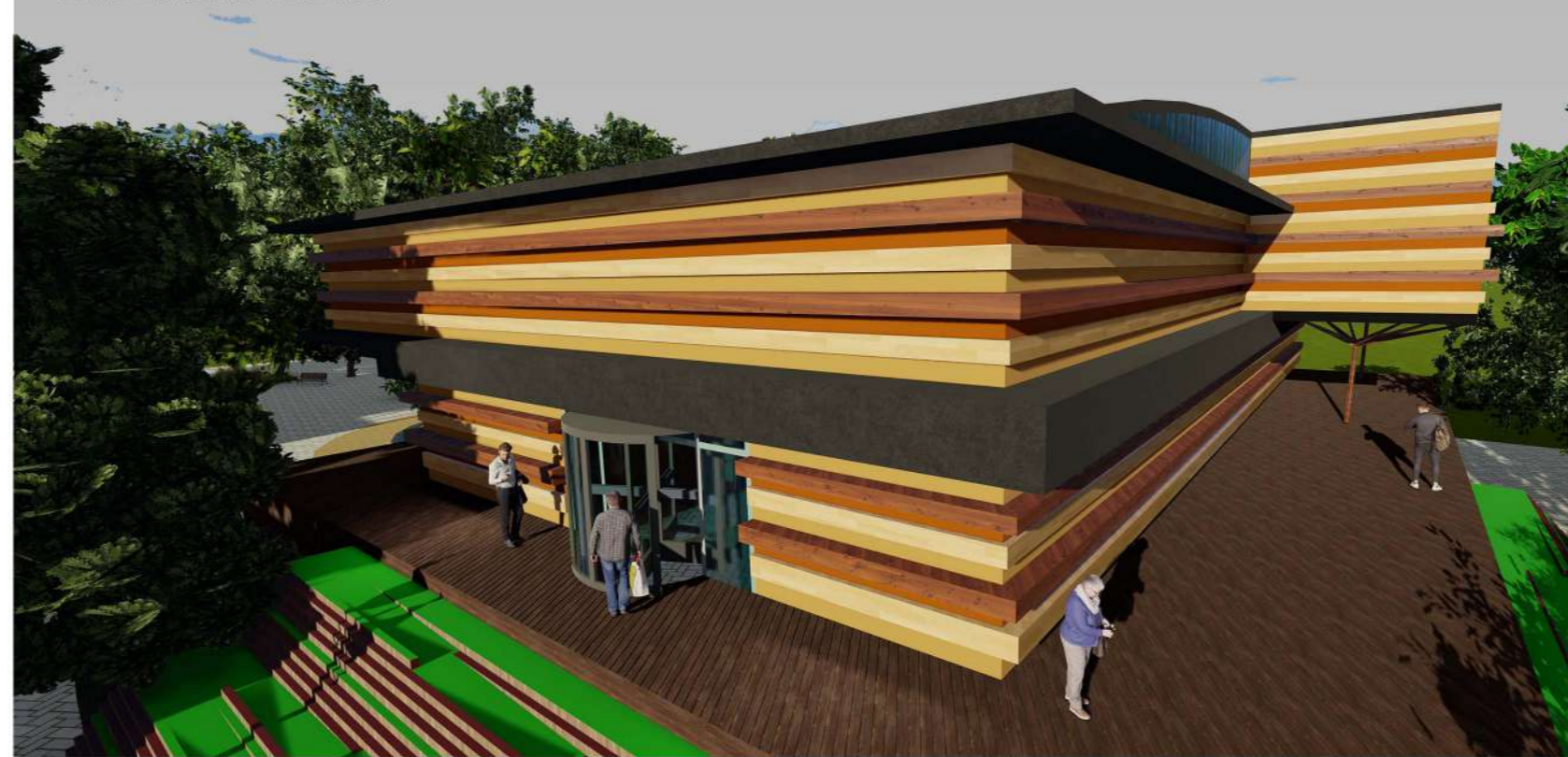
- THE BUILDING DEPICTS THE **ELEMENT EARTH**.

- WHEN WE ARE CONNECTED TO THE ELEMENT EARTH, WE ARE CONNECTED TO IT'S RESOURCES AND FEEL ABUNDANCE AND INTERCONNECTEDNESS.

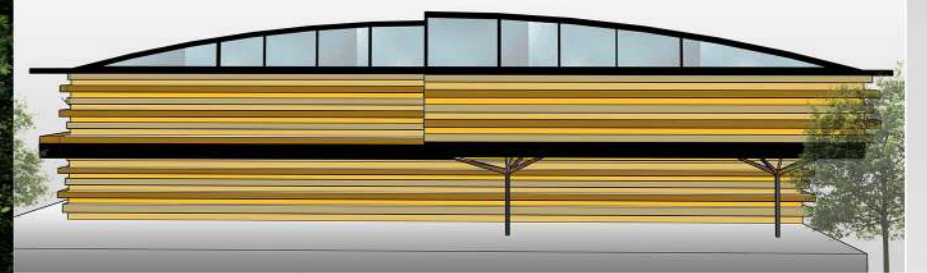
- EARTH IS NOT JUST SOIL, IT IS EVERYTHING IN NATURE THAT IS SOLID. IT MANIFESTS STABILITY, PERMANENCE, REGIDITY. IT ALLOWS US TO BE ROOTED TO THE RESOURCES.



EXTERIOR VIEWS



ELEVATION



SIDE ELEVATION- SOUTH

FACADE



DEPICTING THE ELEMENT EARTH

MATERIALS USED



ASH WOOD



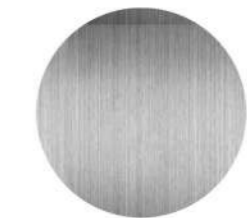
WALNUT WOOD



MARBLE



GLASS

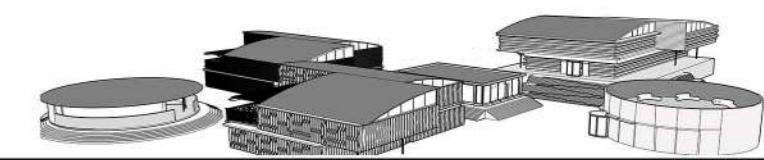
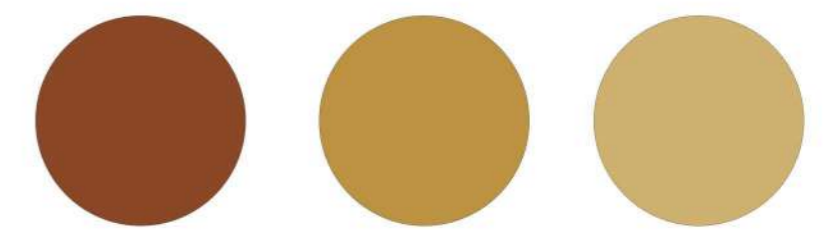


STEEL



TERACOTTA

COLOUR PALETTE



INTERNAL SPACES



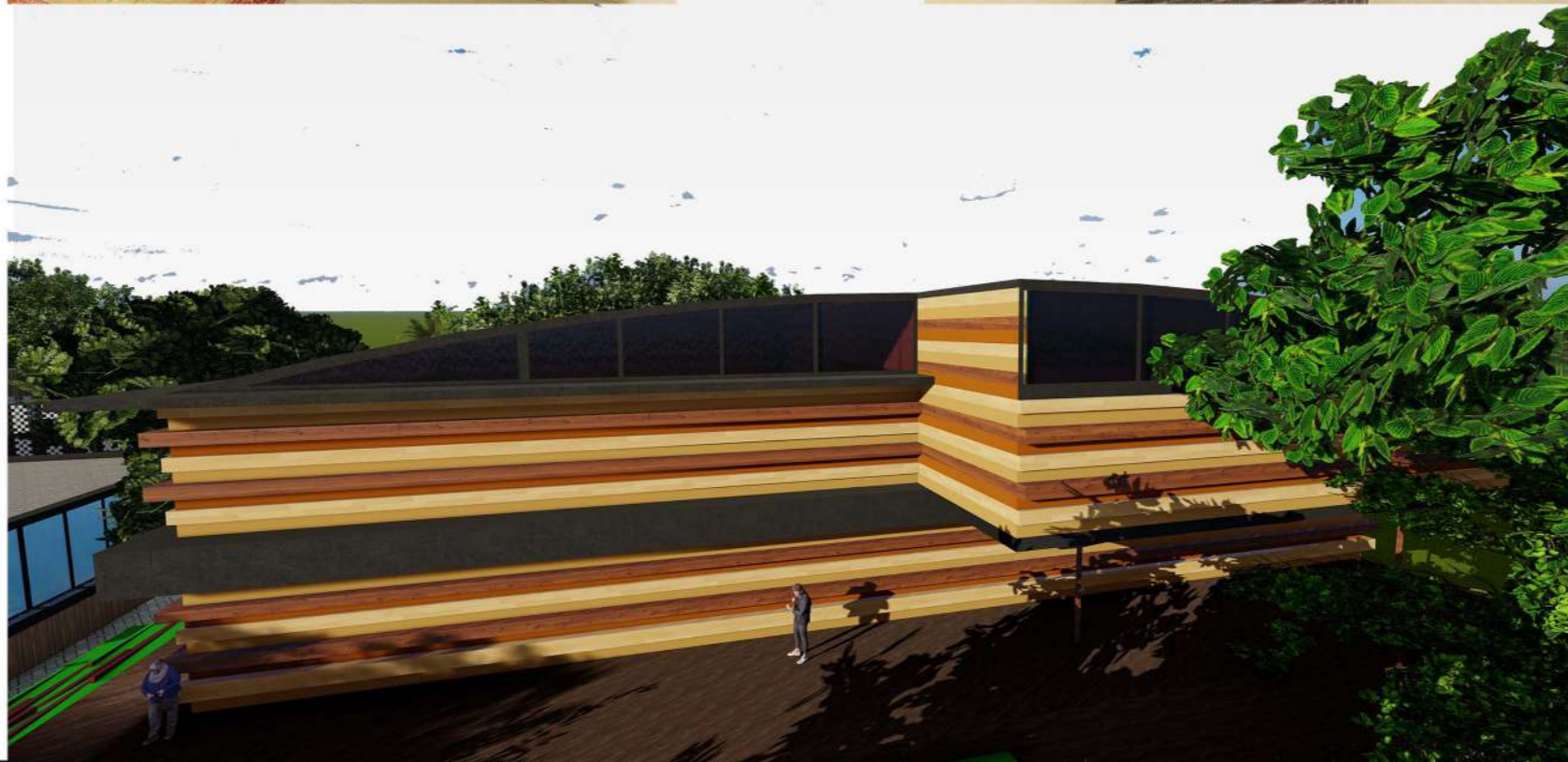
H
E
A
L
I
N
G
R
O
O
M



C
H
A
N
G
I
N
G
R
O
O
M



H
Y
D
R
O
P
O
O
L



A
R
O
M
A
T
H
E
R
A
P
Y
&

05

E
N
E
R
G
Y
T
H
E
R
A
P
Y
&

FLOOR PLAN - GROUND FLOOR



1. WAITING AREA
2. RECEPTION
3. STAFF RESTROOM (1.5M x 1.5M)
4. STAFF LOCKER (3.2M x 2.8)
5. OFFICE (5.2M x 3.9M)
6. CHANGING ROOM-MEN (6.9M x 5.5M)
7. RESTROOM (5.2M x 3.3M)
8. CHANGING ROOM- WOMEN (6.9M x 5.5M)
9. STEAM (3M x 2.5M)
10. SAUNA (3M x 2.4M)
- 11,12,13,14,17. TREATMENT ROOM (2.9M x 2.5M)
15. STORAGE(2.9M x 2.4M)
16. COUPLES ROOM (2.9M x 2.9M)
- 18,19. HYDROPOOL
20. REFRESHMENTS

SCALE- 1:100

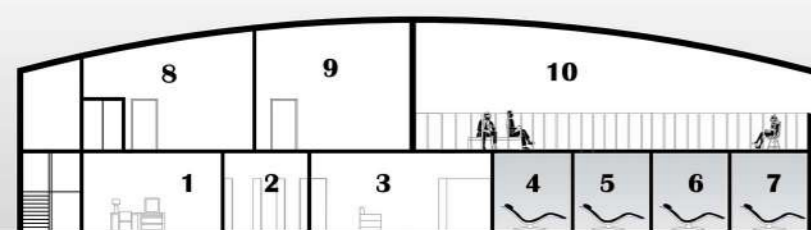
FLOOR PLAN - FIRST FLOOR

1. WAITNG AREA
- 2.RECEPTION
3. CHANGING ROOM- MEN (6.5M x 5.5M)
4. CHANGING ROOM- WOMEN (5.9M x 5.4M)
- 5,6,7,8,9,10,11. AYURVEDA TREATMENT ROOMS (3.4M x 2.4M)
- 12,13,14,15,16. ENERGY THERAPY TREATMENT ROOMS (3.5M x 3.4M)
17. HEALING ROOM (10M x 6.3M)
18. BALCONY WITH PERGOLA



SCALE- 1:100

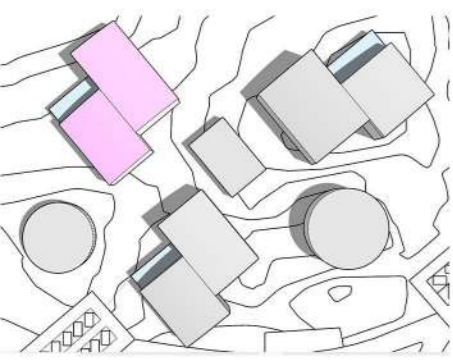
BUILDING SECTION



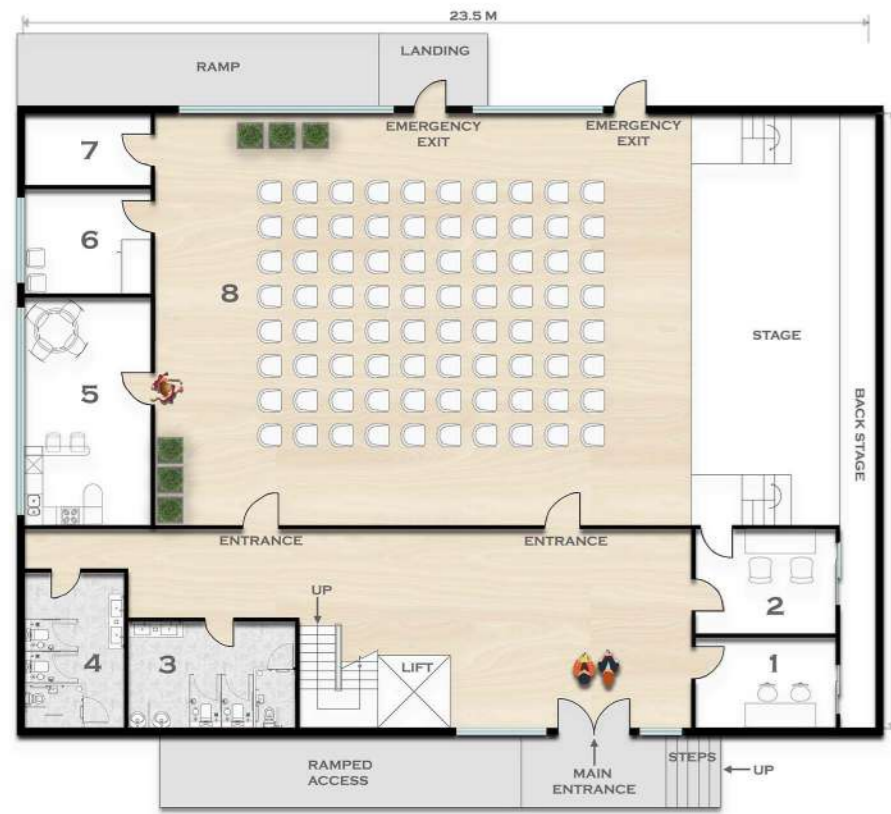
1. OFFICE
2. STAFF LOCKER
3. CHANGING ROOM(MEN)
- 4,5,6,7. AROMATHERAPY TREATMENT ROOMS
8. CHANGING ROOM 2(MEN)
9. CHANGING ROOM 2 (WOMEN)
10. BALCONY



-IT IS A SPACE WHERE EVENTS CAN BE ORGANISED WHERE MORE PEOPLE ARE ATTRACTED TO THIS SPACE TO VISIT DURING AN EVENT OR A PROGRAM CONDUCTED AND ALSO WELCOMES PEOPLE TO INCREASE SOCIAL INTERACTION .



-THIS BUILDING DEPICTS THE **ELEMENT AIR**.
 - THE ELEMENT AIR IS ABOUT INSPIRATION, CHANGE AND MOVMENT
 -IT IS THE EXPERENCE OF FRESHNESS , DYNAMISM AND WE CAN LET GO AND ACCOMPLISH THINGS EFFORTLESSLY.
 -IT IS MOBILE ETERNALLY DYMANIC
 - IT I RESPONSIBLE FOR THE EXPANSION , CONTRACTION , AND SUPPRESSION



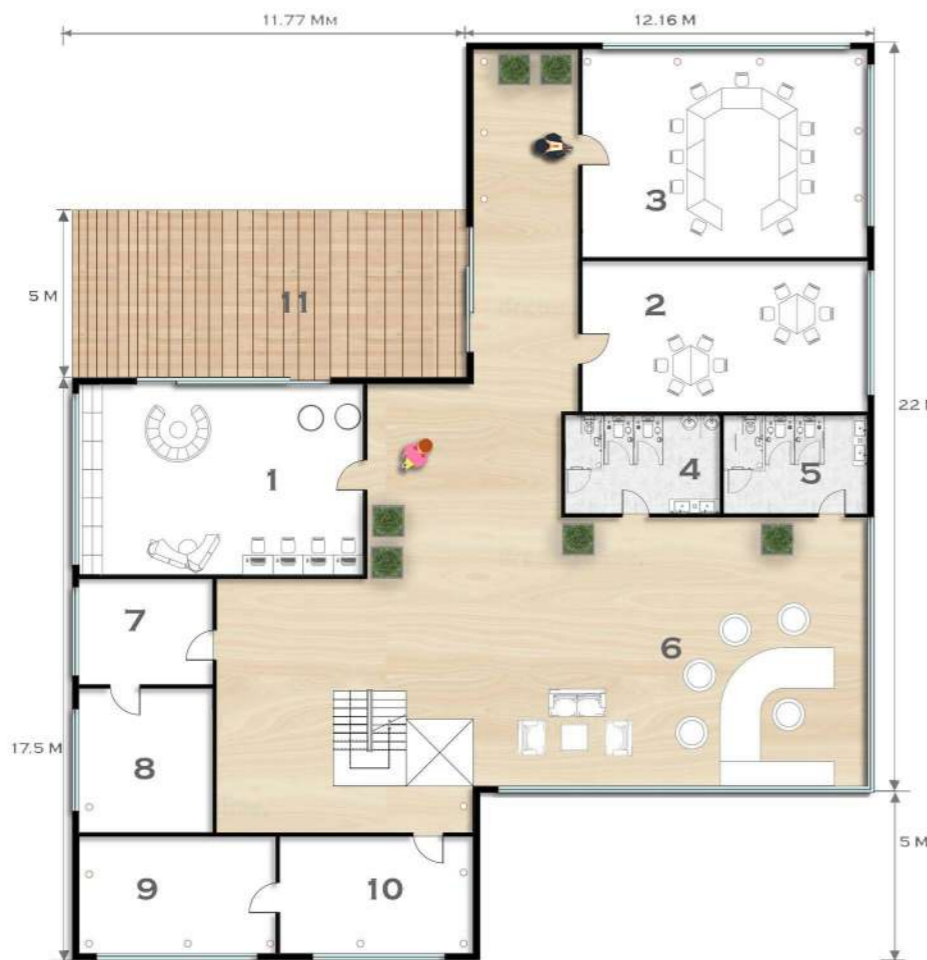
FLOOR PLAN - GROUND FLOOR

1. AUDIO ROOM (3.9M x 2.5M)
2. GREEN ROOM (3.9M x 2.9M)
3. GENTS RESTROOM (4.6M x 2.9M)
4. LADIES RESTROOM (4.3M x 2.7M)
5. KITCHEN (6.3M x 3.5M)
6. STORAGE (3.5M x 2.9M)
7. ELECTRICAL ROOM (3.5M x 2M)
8. MULTIPURPOSE HALL (20M x 11.4M)

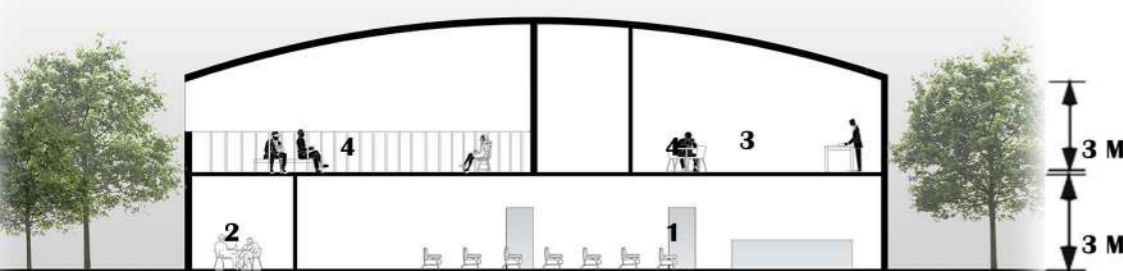
SCALE- 1:100

FLOOR PLAN - FIRST FLOOR

1. LIBRARY (8.5M x 5.7M)
2. CONFERENCE ROOM (8.5M x 6.2M)
3. SEMINAR/WORKSHOP (8.5M x 4.5M)
4. GENTS RESTROOM (4.6M x 2.9M)
5. LADIES RESTROOM (4.3M x 2.9M)
6. RESFRESHMENT
7. GENTS ABLUTION (4M x 3.1M)
8. GENTS PRAYER ROOM (4.3M x 4M)
9. LADIES PRAYER ROOM (5.9M x 3.5M)
10. LADIES ABLUTION (5.7M x 3.5M)



BUILDING SECTION



1. MULTI-PURPOSE HALL
2. KITCHEN
3. CONFERENCE ROOM
4. BALCONY WITH PERGOLA

SCALE- 1:100

EXTERIOR VIEWS



MULTIPURPOSE HALL



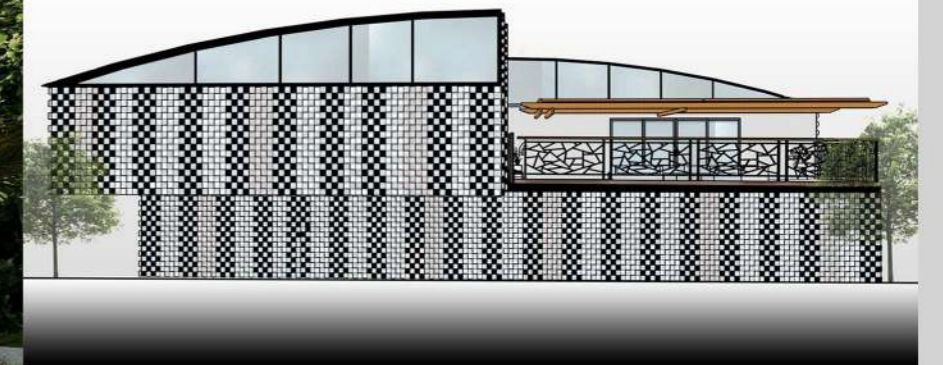
LIBRARY



CONFERENCE ROOM

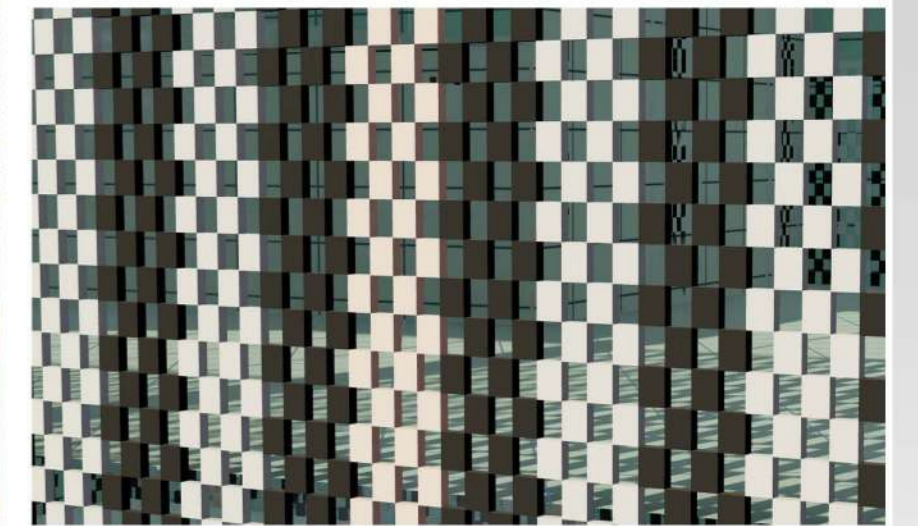


ELEVATION



BACK ELEVATION- SOUTH

FACADE



DEPICTING THE ELEMENT AIR (PERFORATED METAL SHEET)

MATERIALS USED

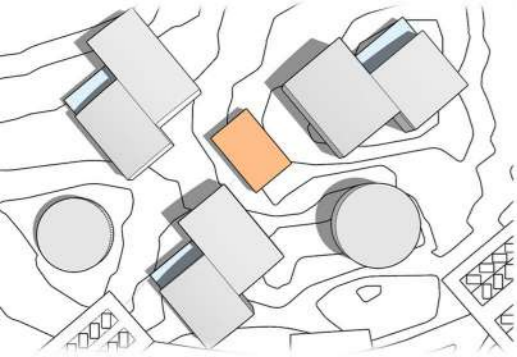


COLOUR PALETTE



- THIS SPACE PROVIDES VISITORS TO GRAB THEIR REFRESHMENTS AND TO INCREASE SOCIAL INTERACTION.

- THIS BUILDING DEPICTS THE **ELEMENT WATER**
 - IT IS ABOUT FLOW, FLEXIBILITY AND FEELING AT EASE.
 - IT IS A SENSE OF ALLOWING, CALM, NO JUDGEMENT AND EXPERIENCE CLARITY.

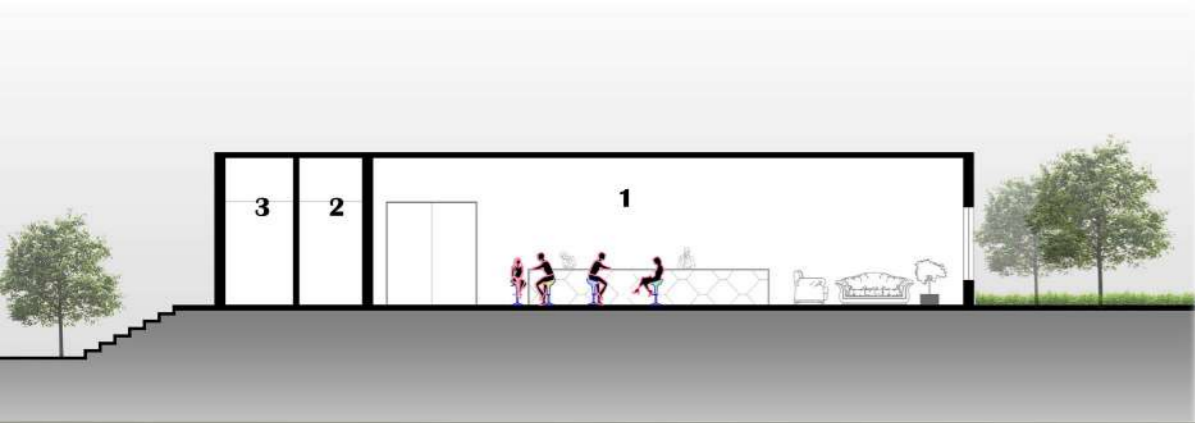


FLOOR PLAN



1. PATIO (12.3M x 4M)
2. SEATING AREA
3. RESTROOM- GENTS (1.6M x 0.8M)
4. ACCESSIBILITY TOILET (1.6M x 1.1M)
5. RESTROOM-LADIES (1.4M x 0.8M)
6. HANDWASH
7. KITCHEN (2.1M x 1.3M)
8. BOUTIQUE (9.7M x 2.8M)

BUILDING SECTION



- 3 M
1. SEATING AREA
 - 2, 3. BOUTIQUE



EXTERIOR VIEW



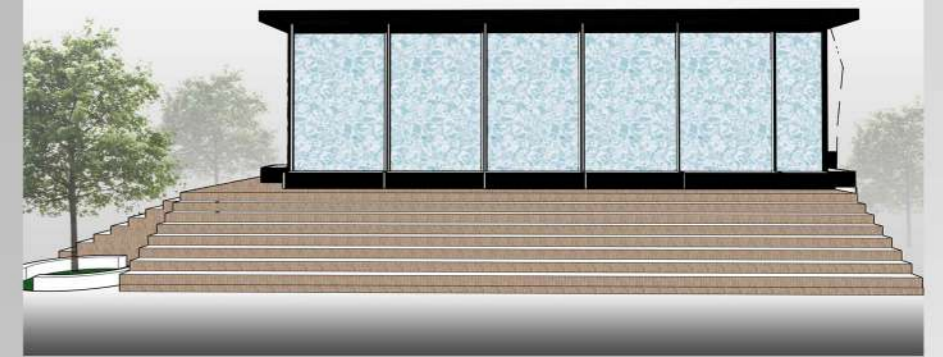
INTERNAL SPACE



COLOUR PALETTE



ELEVATION



SIDE ELEVATION - SOUTH

FACADE



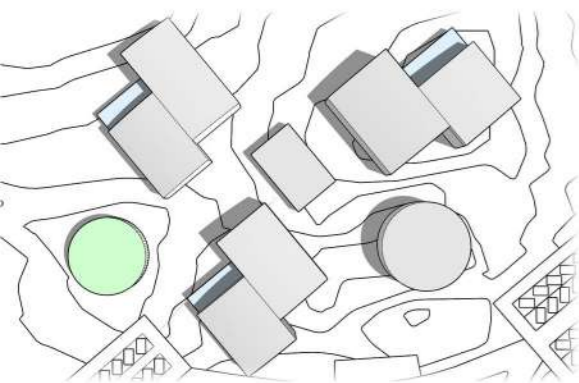
DEPICTING THE ELEMENT WATER (WATER WALL FACADE)

MATERIALS USED



C
A
F
E

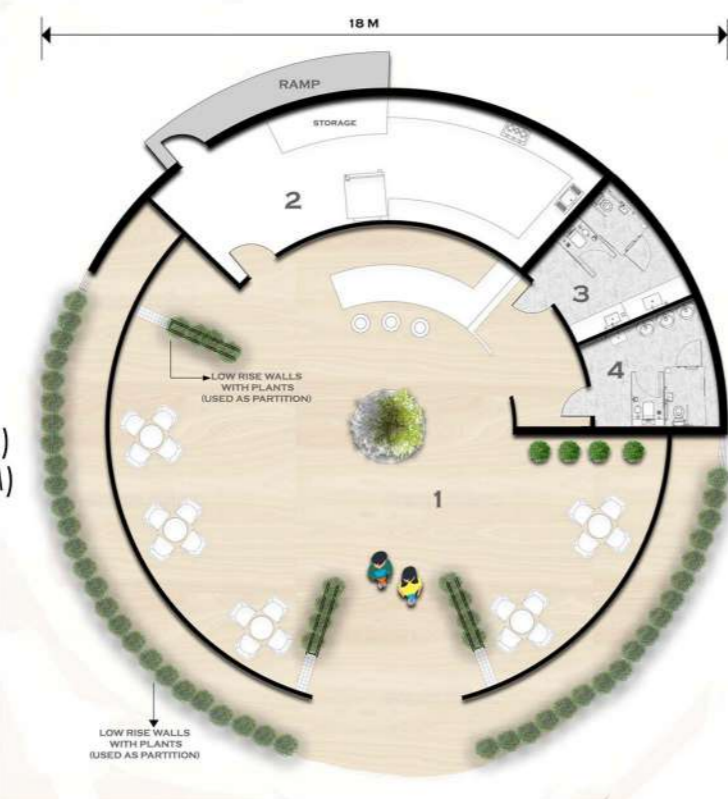
07



- THIS SPACE ALLOWS VISITORS AND RESIDENTS TO HAVE FULL PACKED MEALS.
 - IT PROVIDES SOCIAL INTERACTION AND CONNECTION THROUGH THE LOW RISE WALLS.
 - IT PROVIDES COZY AND REFRESHING AMBIENCE.

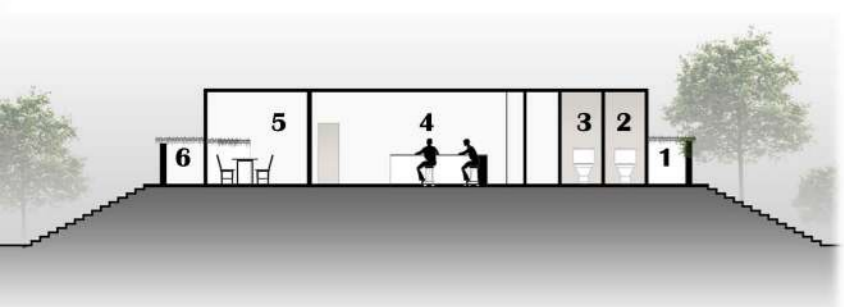


FLOOR PLAN



1. SEATING AREA
2. KITCHEN (12.3M x 3.4M)
3. GENTS RESTROOM (3.8M x 3.4M)
4. LADIES RESTROOM (3.8M x 3.4M)

BUILDING SECTION



- 3 M
1. LOW RISE WALL WALKING SPACE
 2. LADIES RESTROOM
 3. GENTS RESTROOM
 4. SEATING AREA
 5. SEATING AREA
 6. LOW RISE WALL WALKING SPACE



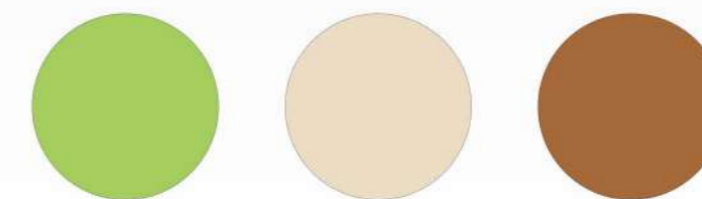
EXTERIOR VIEW



INTERNAL SPACE



COLOUR PALETTE



ELEVATION



FRONT ELEVATION- NORTH

FACADE



LOW RISE WALLS INSTEAD OF FULL LENGTH WALLS

MATERIALS USED



R
E
S
T
A
U
R
A
N
T

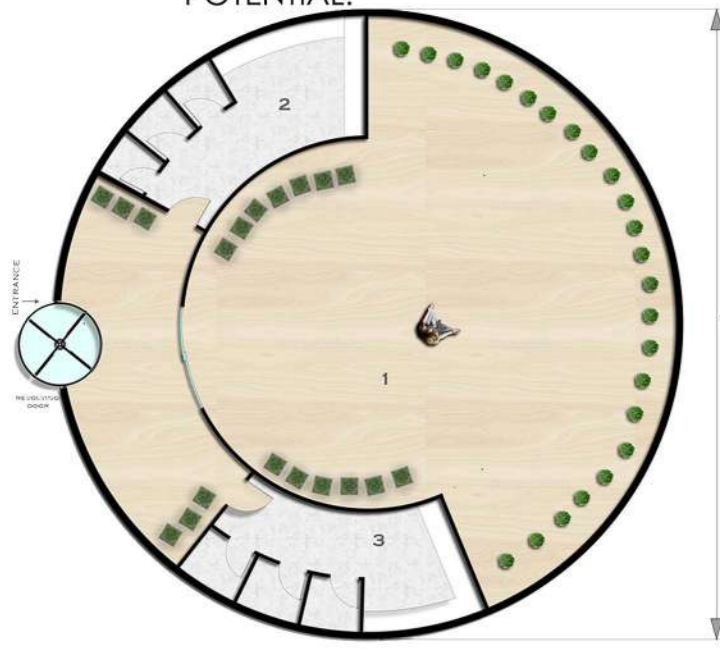


- THIS SPACE ALLOWS VISITORS TO REJUVENATE THEIR BODY, MIND AND SOUL BY EMBRACING THE NATURAL SURROUNDINGS.

- THIS BUILDING DEPICS THE **ELEMENT SPACE**.

- IT IS OPEN, ALL- INCLUDING , ALL- ENCOMPASING, AND ALL OTHER ELEMENTS ARISE FROM IT.

- IT IS VAST, ACCOMODATING ALLOWS SPACIOUSNES AND RELATES TO INFINITE POTENTIAL.



FLOOR PLAN - GROUND FLOOR

- 1. MEDITATION HALL
- 2. CHANGING ROOM (MEN)
- 3. CHANGING ROOM (WOMEN)

SCALE- 1:100



FLOOR PLAN - FIRST FLOOR

MEDITATION GARDEN

COLOUR PALETTE

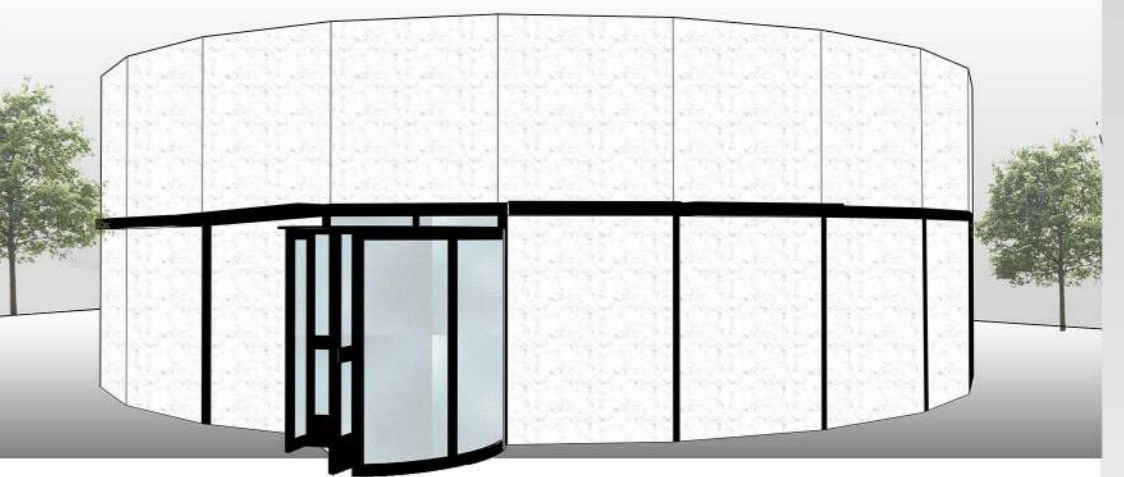


MEDITATION HALL



MEDITATION GARDEN

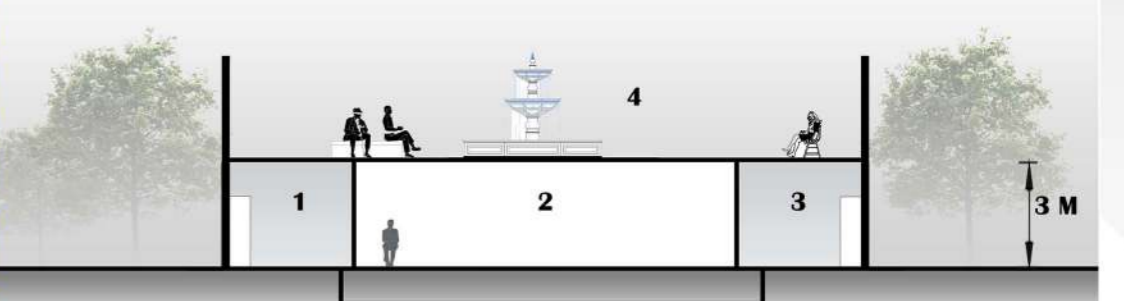
ELEVATION



SIDE ELEVATION - SOUTH

SCALE- 1:100

BUILDING SECTION



- 1. CHANGING ROOM (MEN)
- 2. MEDITATION HALL
- 3. CHANGING ROOM (WOMEN)
- 4. MEDITATION GARDEN

MATERIALS USED



WOOD

MARBLE

GLASS



EXTERIOR VIEWS

AN ILLUSTRATION OF INTERACTION BETWEEN DIFFERENT BIO-SPECIES AND NATURAL ELEMENTS AT WELLNESS CENTER THROUGH DESIGNED SPACES.

GREEN WALL

- THE GREEN WALL IMPROVES THE QUALITY OF THE AIR
- IT DECREASES THE AMBIENT TEMPERATURE
- IT DECREASES NOISE
- IT HAS MORE PRODUCTIVITY.
- IT MAKES THE BUILDING MORE FIRE RESISTANT

FISH POND

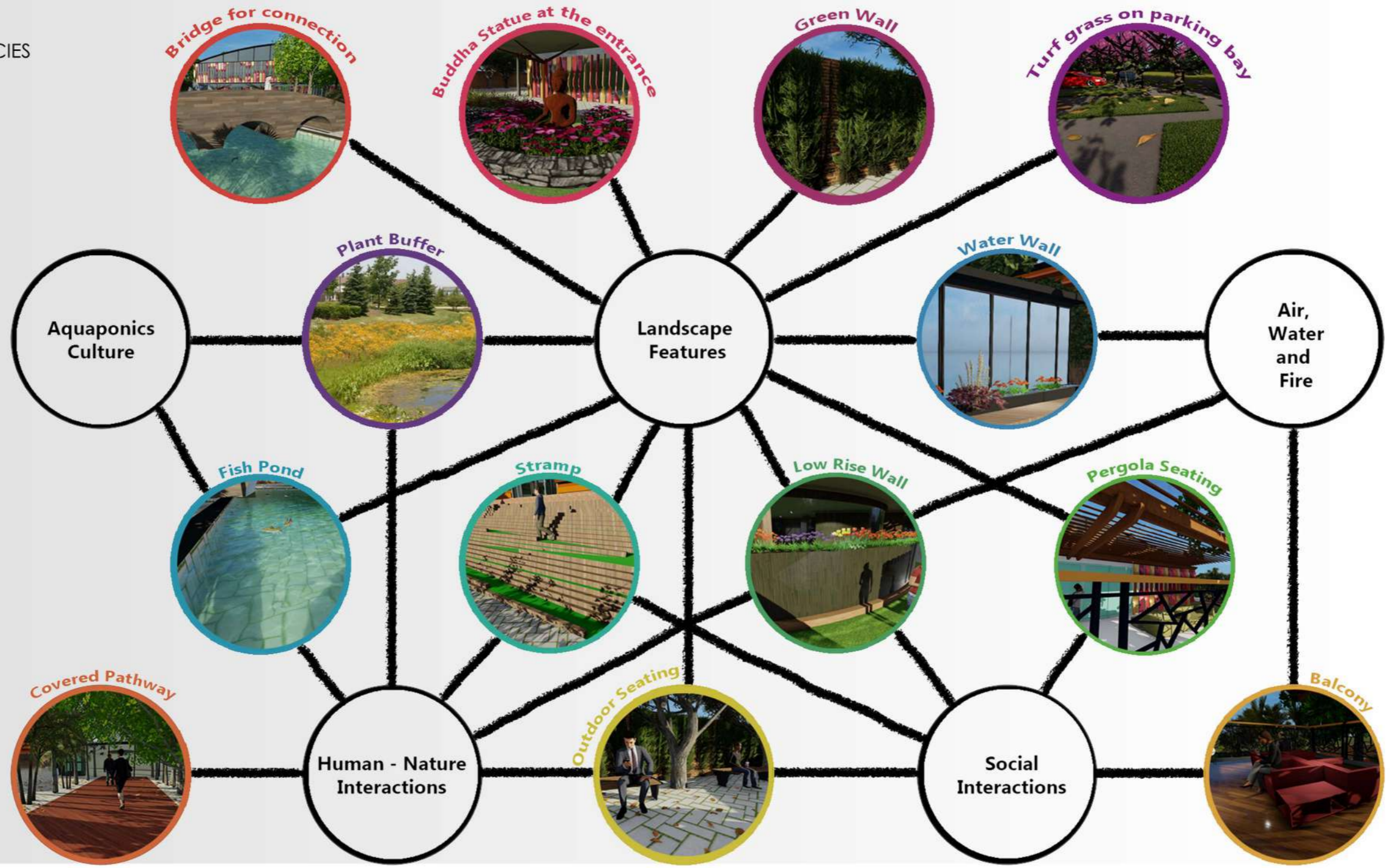
- WATER CONSERVATION
- LESS MOWING, FEWER POLLUTANTS
- FEWER PESTICIDES AND FERTILIZERS
- SUPPORTS LOCAL WILDLIFE
- CREATES ENVIRONMENTAL AWARENESS

COVERED PATHWAY

- PROTECTION AGAINST HARSH WEATHER CONDITIONS
- ABILITY TO CONNECT BUILDINGS TOGETHER
- LOWER MAINTENANCE COSTS
- OPTIMIZE DROP OFF AREAS
- CULTIVATING A CULTURE OF WALKING

LOW RISE WALL

- GREATER INTERACTION
- OPEN ATMOSPHERE
- SEPARATING SPACES
- AESTHETIC FEATURE



STRAMP

- EASY ACCESSIBILITY
- FASTER APPROACH
- FOR SPECIAL NEEDS PEOPLE

PERGOLA

- DEFINED SPACE
- PROVIDES SHADE
- DURABLE AND LOW MAINTANENCE
- AESTHETIC

PLANT BUFFER

- SUPPORTS LANDSCAPE FEATURES
- PREVENTS SOIL EROSION
- FLOURISHING VEGETATION

BRIDGE

- CONNECTS SPACES

WATER WALL

- TRANQUILIZING FEELING

TURF

- PROVIDES SAFETY
- REPLENISHES AIR



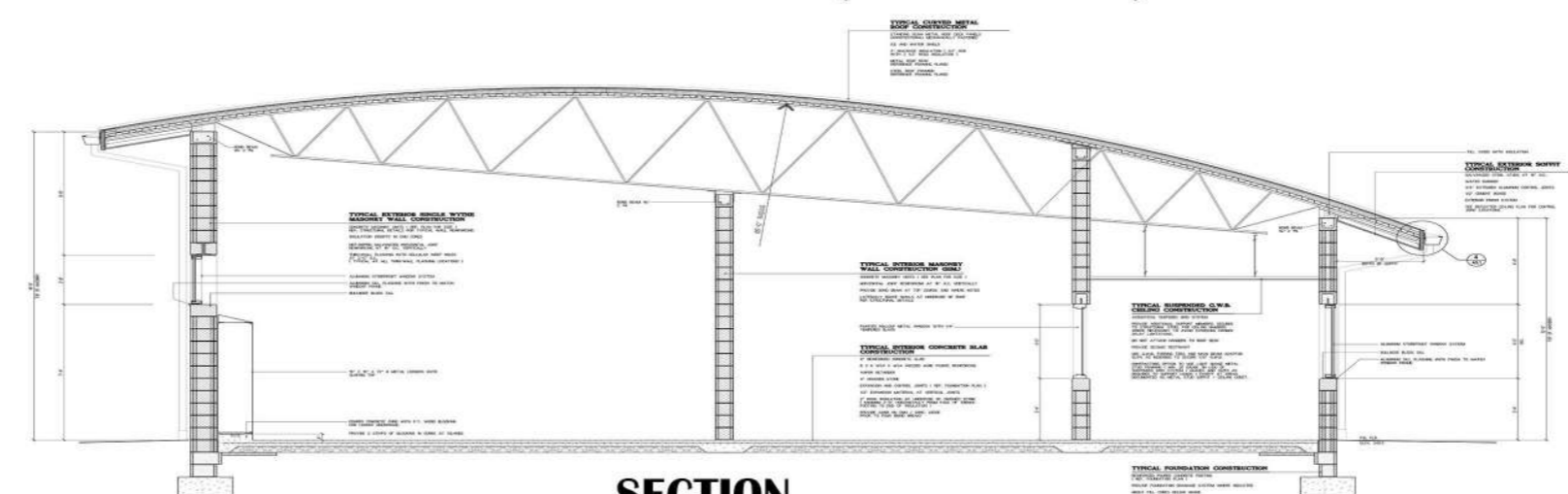
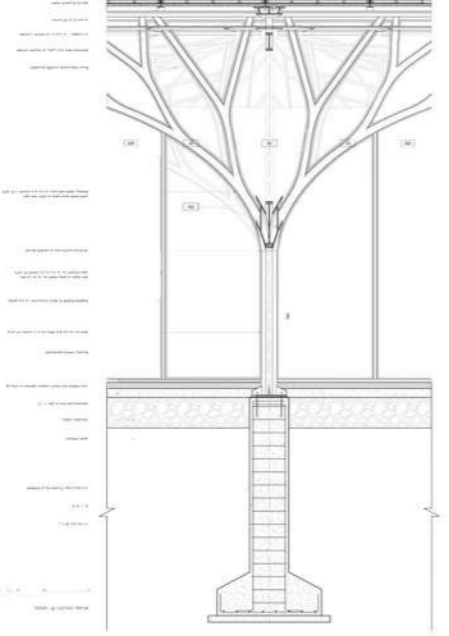
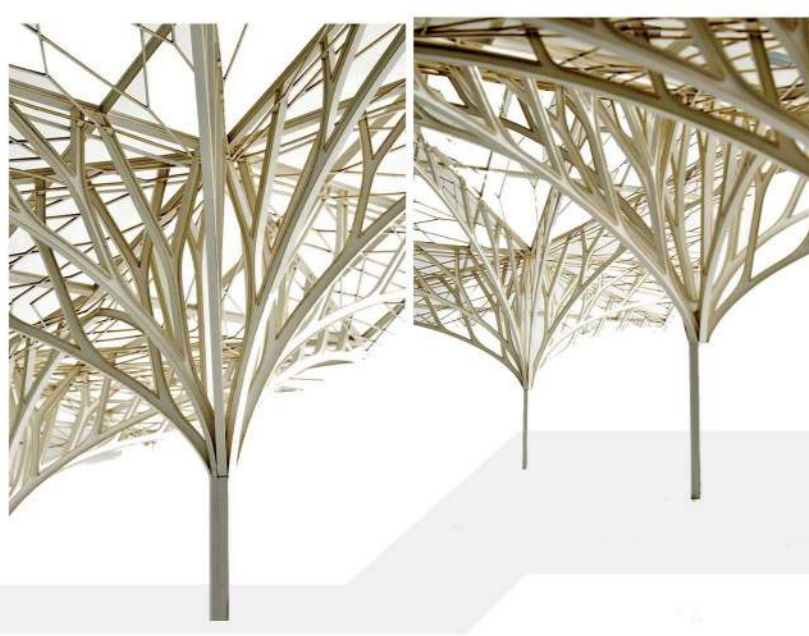
MEDITATION

08

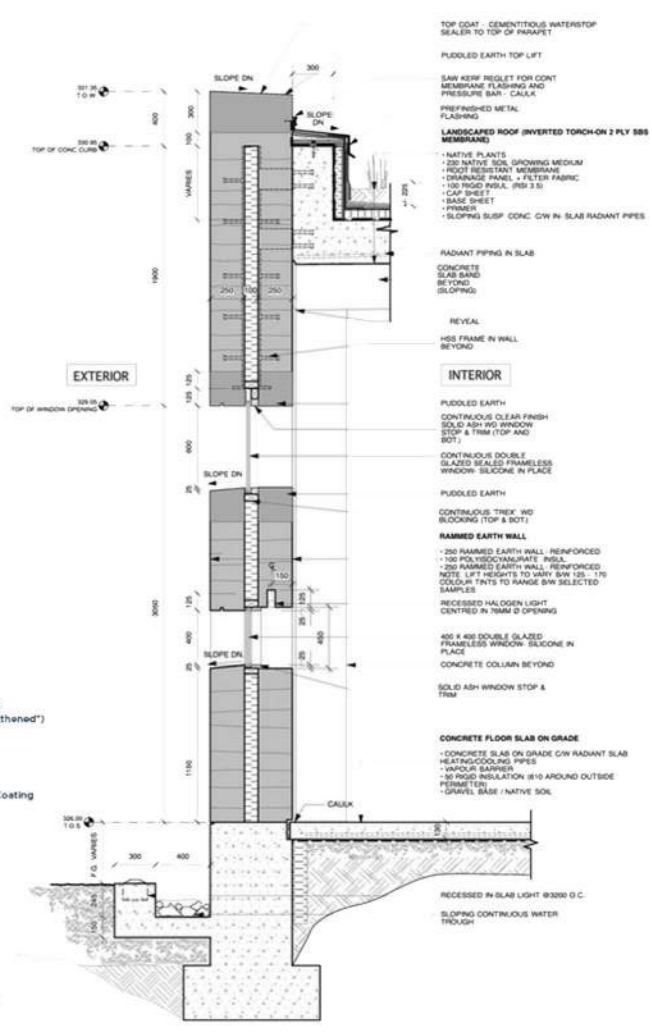
INTERACTION

CURVED ROOF CONSTRUCTION (STEEL TRUSS)

RAMMED EARTH WALL DETAILS

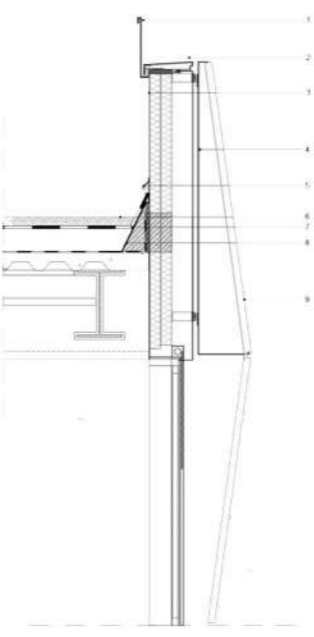


SECTION



SECTION

STEEL COLUMN CONSTRUCTION DETAILS

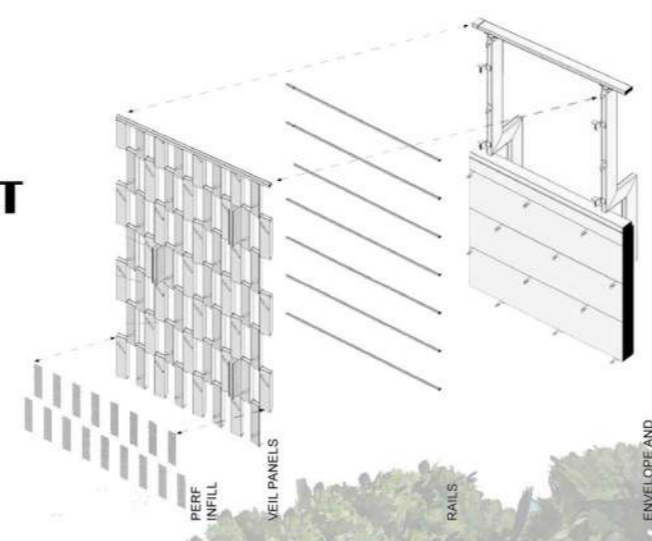
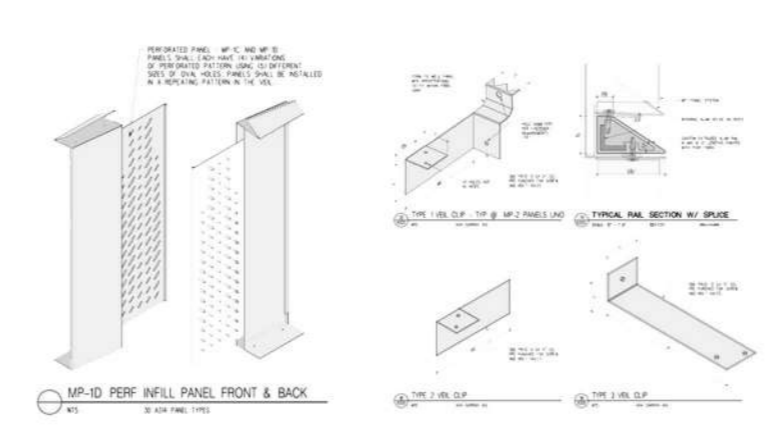


SECTION

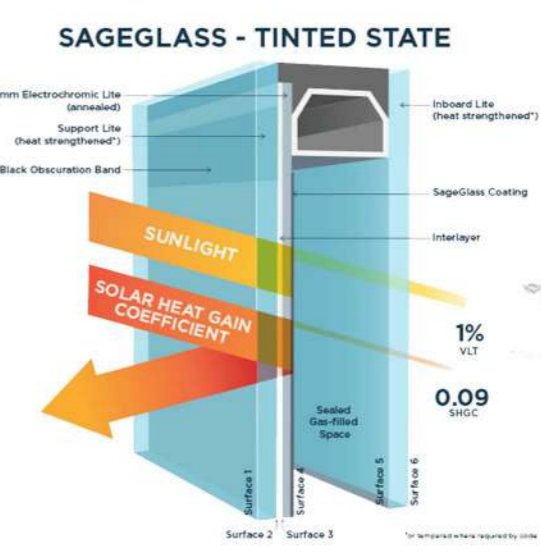
- Parapet details
- 1- bright annealed stainless steel sheeting around the periphery of the roof parapet
 - 2- bright annealed stainless steel coping
 - 3- facade type 2 natural anodized aluminum finish
 - 4- bright annealed stainless steel window frame mantle
 - 5- flashing
 - 6- gavel
 - 7- sealing
 - 8- metal flashing
 - 9- natural aluminum anodized mantle



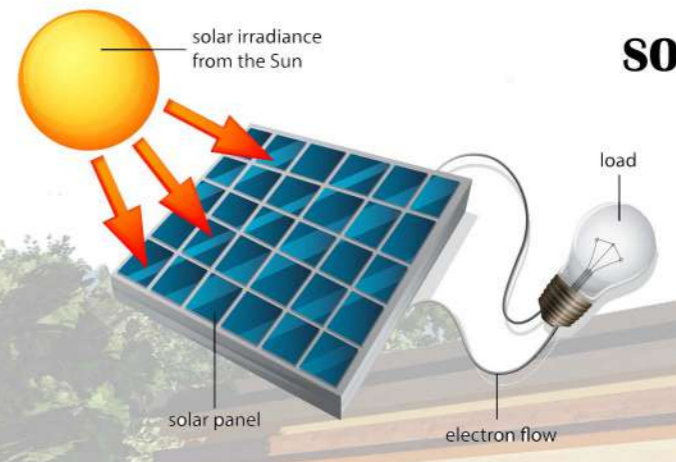
PERFORATED METAL SHEET DETAILS



ELECTROCHROMATIC SMART - GLASS



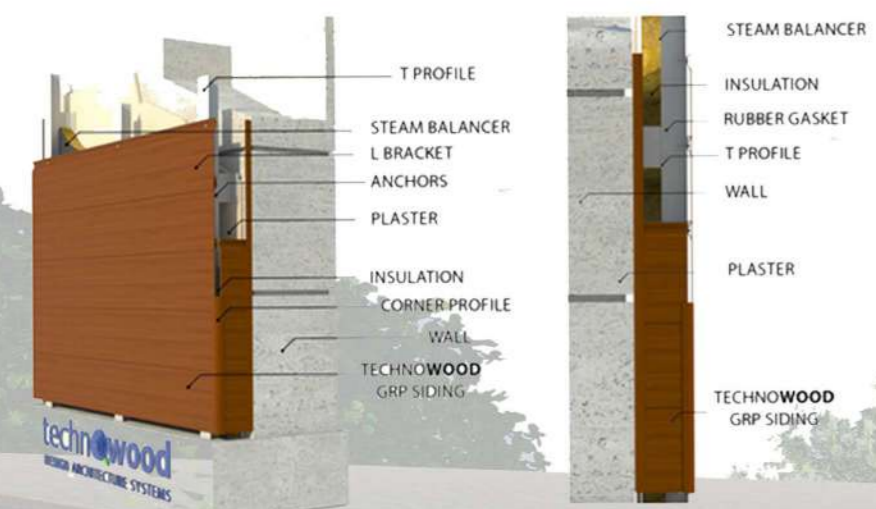
SOLAR ENERGY DIAGRAM



SOLAR POWER

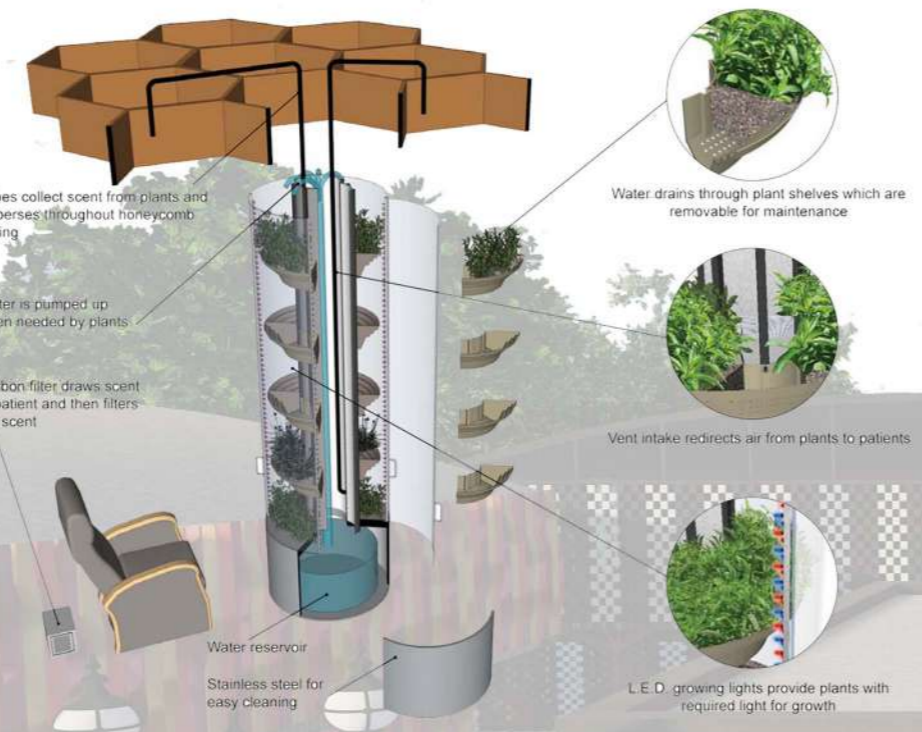
SUSTAINABLE TECHNOLOGIES

ALUMINIUM FACADE DETAILS



SECTION

HEALING THROUGH ARCHITECTURE



WOODEN FACADE DETAILS



SECTION