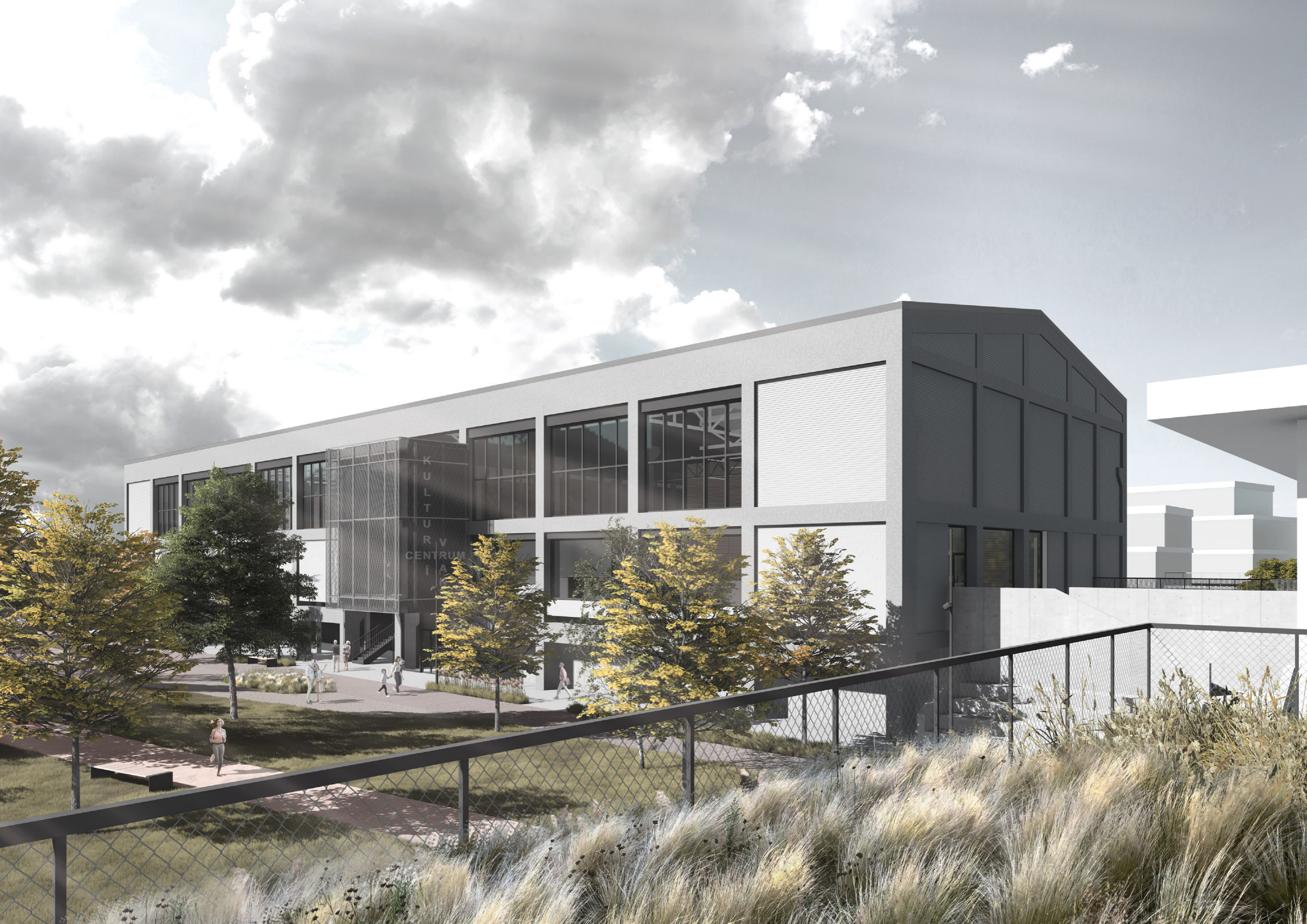




SPORTS ARENA



SPORTOVNÍ HALA



KULTUR V
CENTRUM





K
U
L
T
U
R
V
C
E
N
T
R
U
M
I
N
E





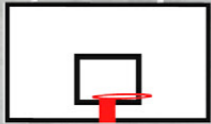


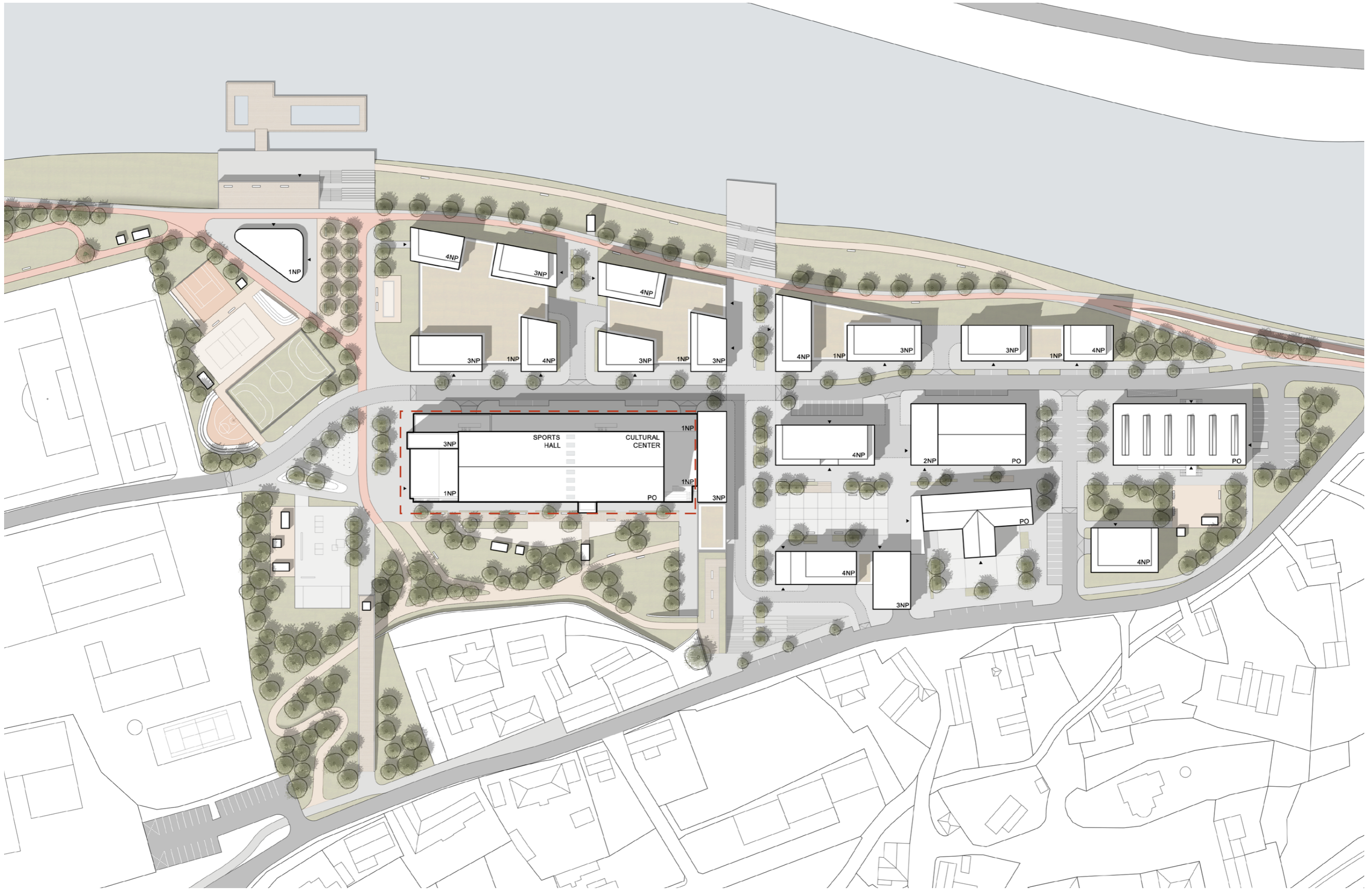


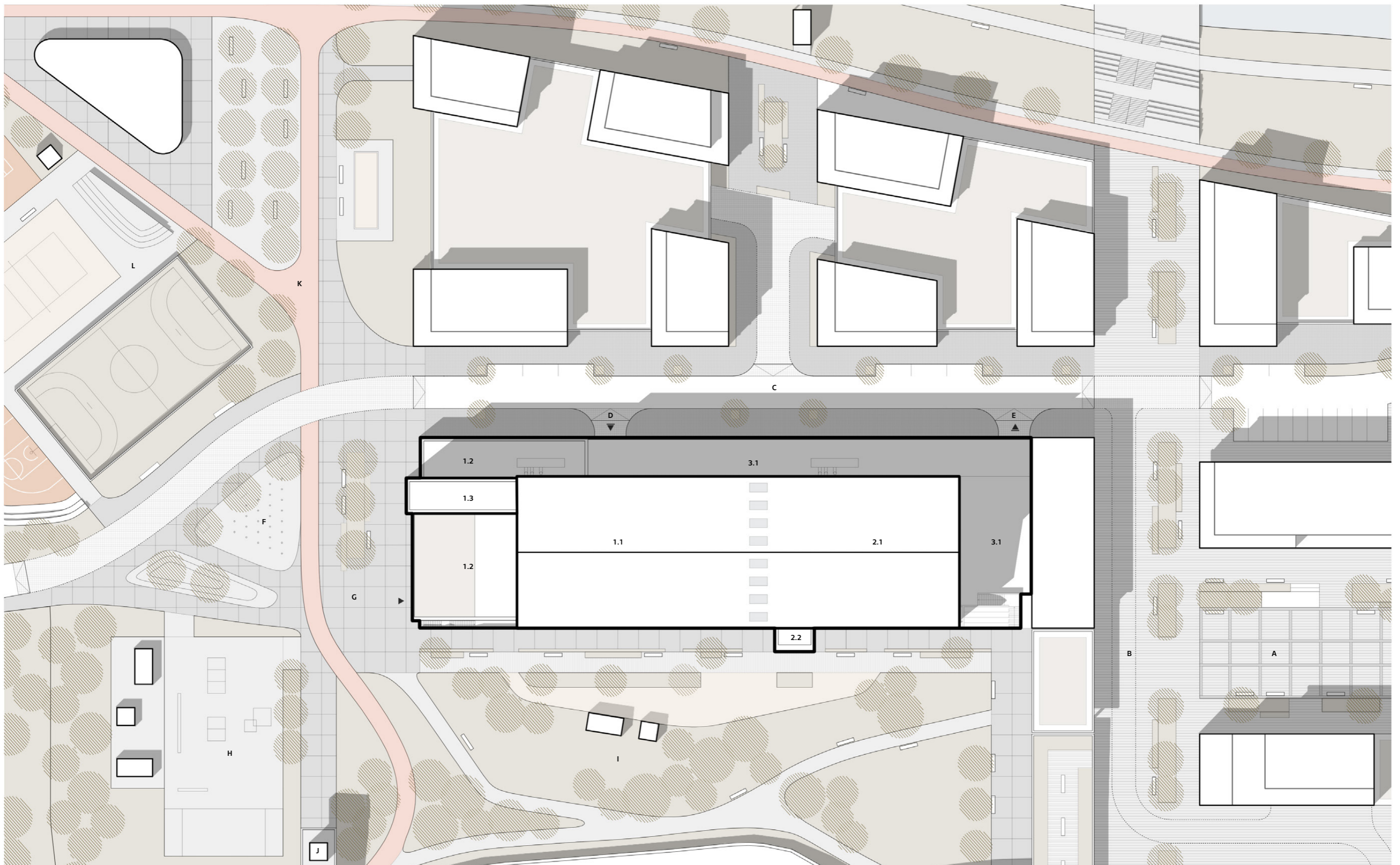


00 1 00
DOMÁČÍ HOSTÉ
15:35
3 5

00 1 00
DOMÁČÍ HOSTÉ
15:35
3 5







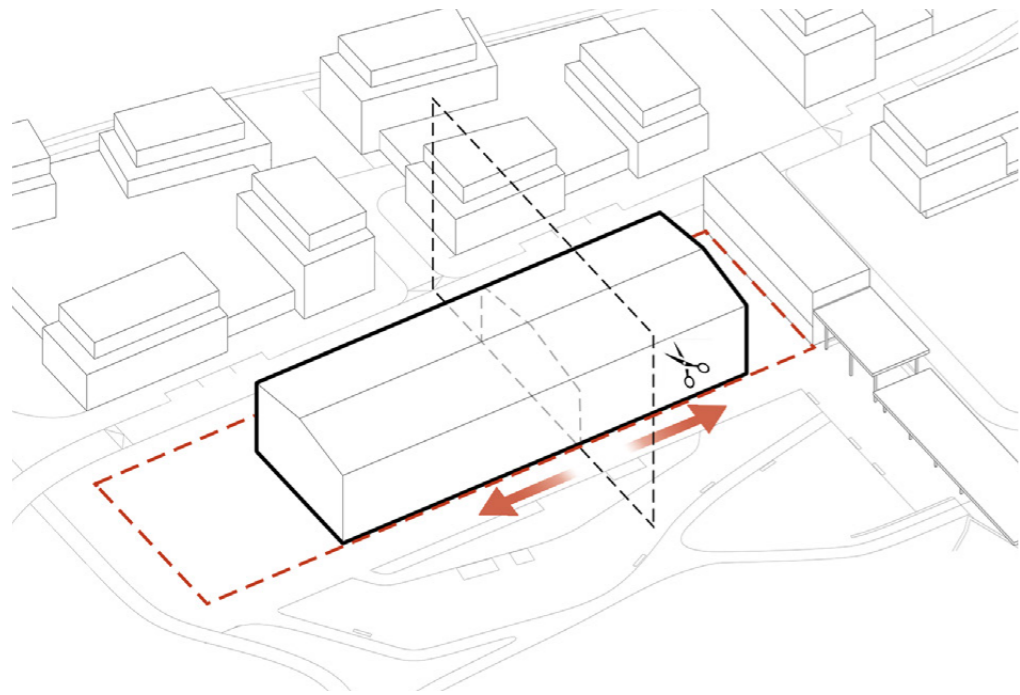
LEGEND | SITE PLAN

Dividing of objects

1.1	Sports hall	the space created in a larger part of the original production hall
1.2	Functional facilities of sports hall	new extension which is connected to the original building of production hall
1.3	Staircase tower	the space where are located vertical routes which connect all floors of sports hall
2.1	Cultural center	the space created in a smaller part of the original production hall
2.2	Functional facilities of cultural center	new extension which forms one of the dominants of the proposal
3.1	Extension of covered parking	it is used to increase the capacity of the covered parking; it forms a roof terrace with green roof which helps to improve the local microclimate

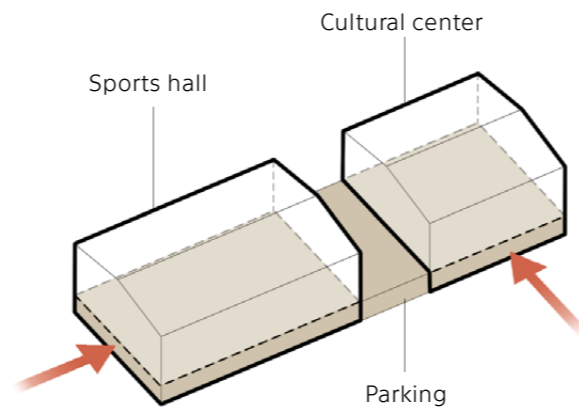
Urban elements

A	Plaza	a public space which serves as a plaza in the middle of the new urban structure
B	Pedestrian promenade	attractive public space which connects the original buildings of the village with the bank of the Vltava river
C	Major local road	the backbone road which serves the new urban structure
D	Entrance to the covered parking	covered parking designed for a visitors of sports hall and cultural center with a capacity of 48 parking spaces
E	Exit from the covered parking	
F	Water element	fountains with nozzles
G	Piazzetta in front of the sports hall	representative scattering space
H	Skatepark	part of a sports and recreational area adjacent to the public park
I	Park	it forms a gradual transition between „urban“ buildings at the plaza and the sports and recreational area
J	Public outdoor elevator	significantly helps to make the new urban complex and the river bank accessible to pedestrians and cyclist from the existing development of the village
K	Local cycle path	it extends the important right-bank cycle path A2 from Prague and also enables connection to suburban public transport (TRAIN, BUS)
L	Sports and recreation area	it follows to the original football pitch and completes the new urban complex; it creates outdoor places suitable for sports and relaxation which make the whole locality more attractive



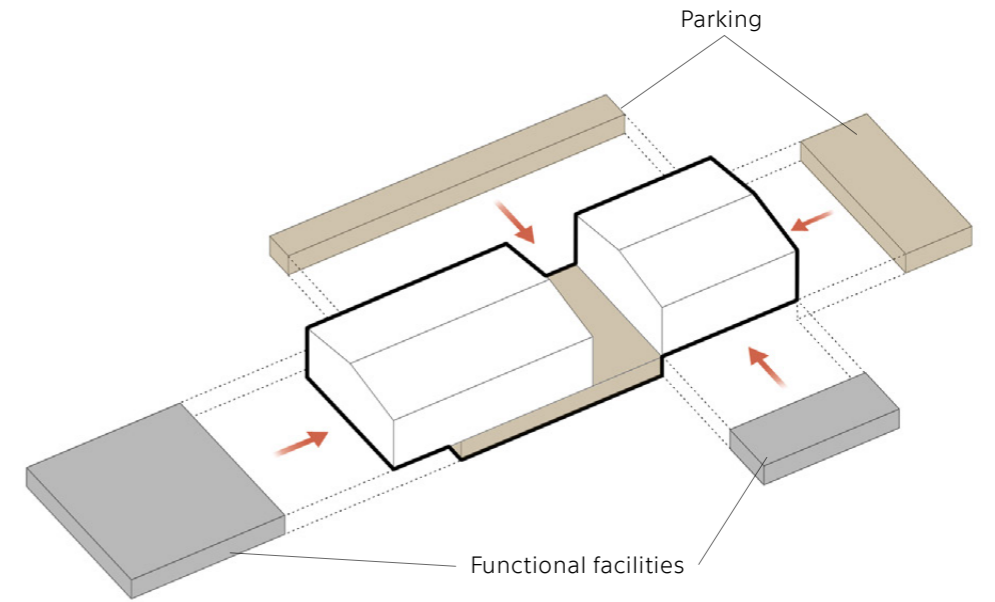
01 | PHASE ONE

Definition of building plot
 First work with the original mass
 Proposal for division



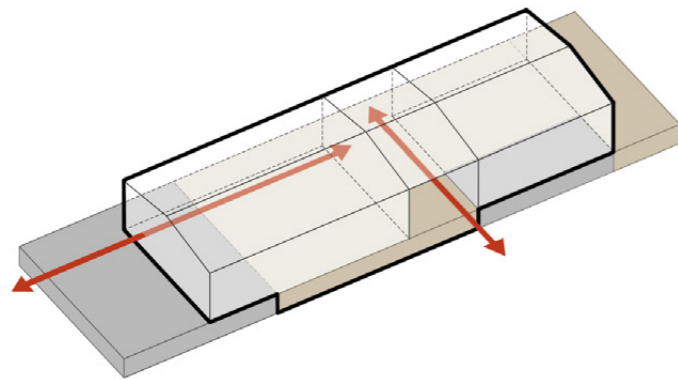
02 | DIVISION

Two dominant masses
 Functional specification
 First shaping



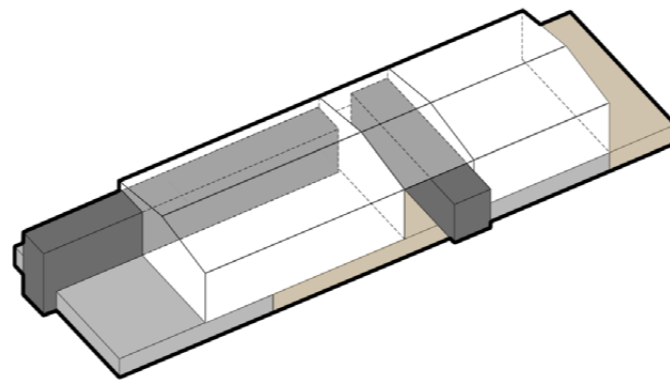
03 | ADDITION

Extension of sports hall
 Extension of cultural center
 Extension of the parking area



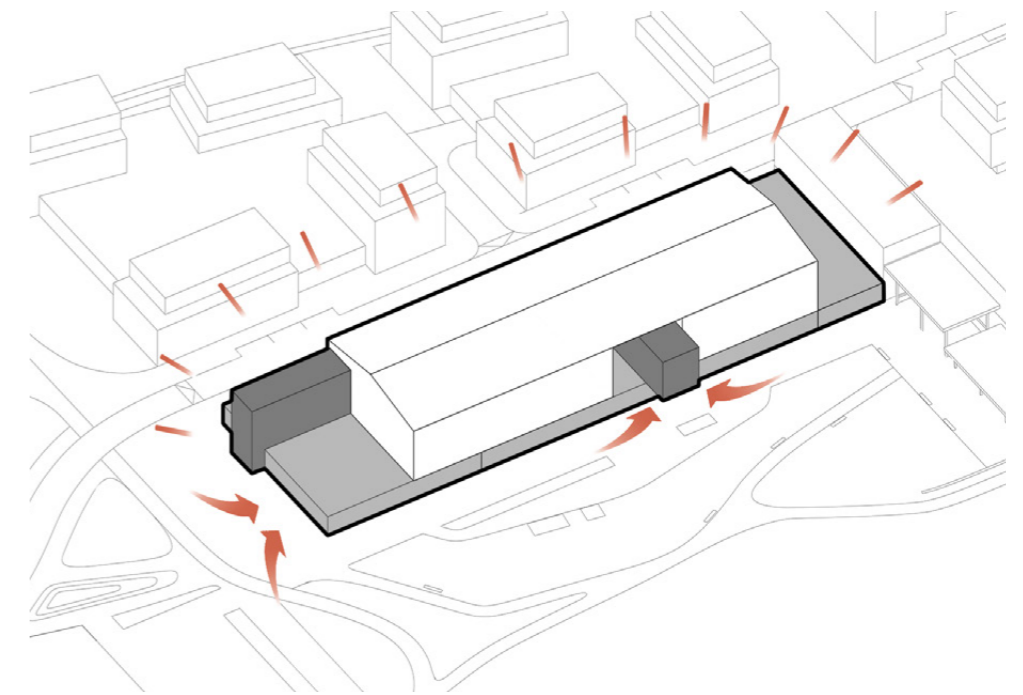
04 | UNITING AND EXTENSIONS

Consolidation of masses
 Directions of expansion
 Space for dominant elements



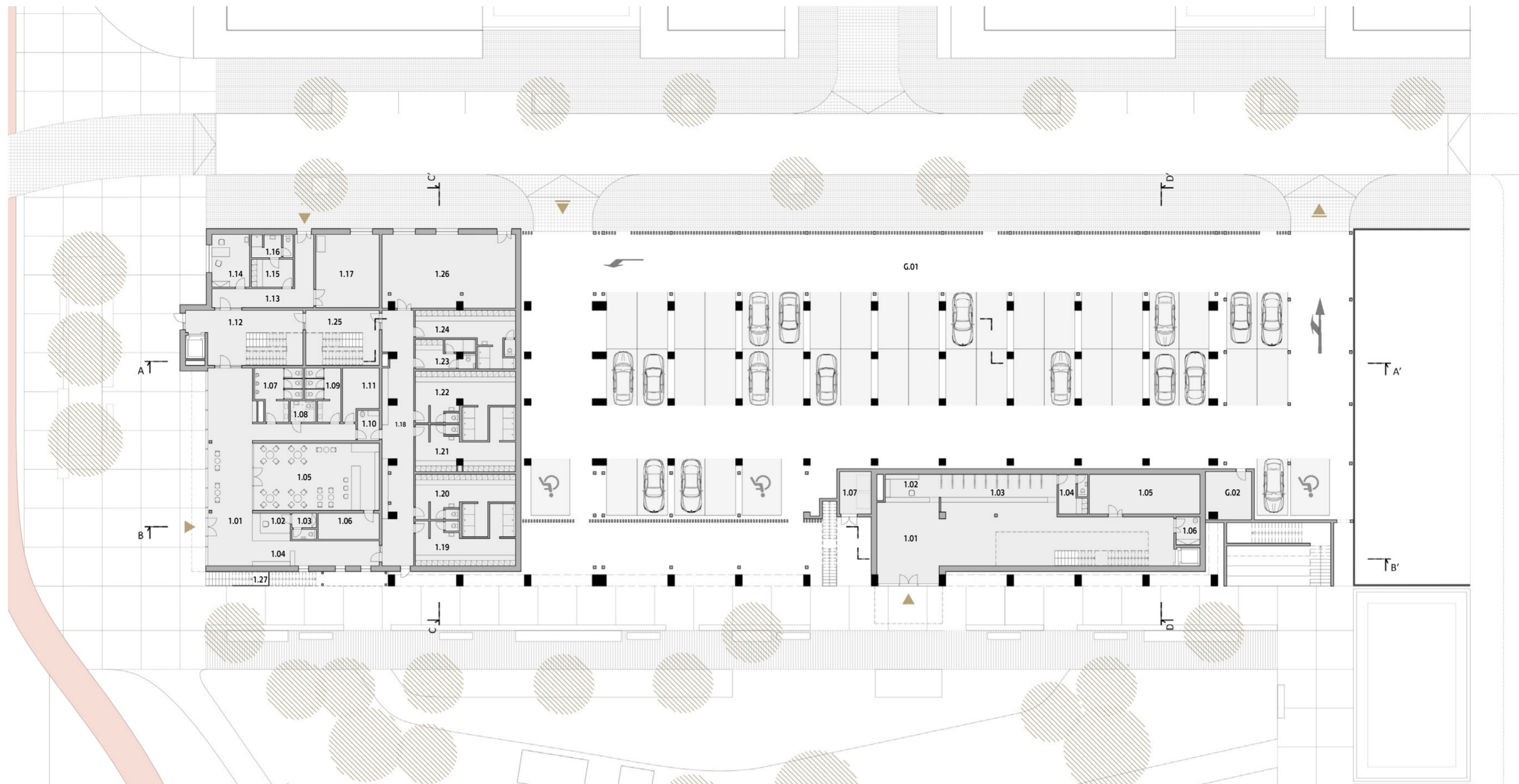
05 | FINAL DESIGN PHASE

Spatial connection
 Final shapes of objects
 Integration of new dominant elements



06 | ADAPTATION

Communication with the surroundings
 Connection to important directions of movement
 Positive influence on the creation of public space



ROOM LIST | SPORTS HALL

1.01	Entrance hall
1.02	Reception
1.03	Background of reception
1.04	Bench barrier between clean and unclean zone
1.05	Snack bar
1.06	Snack bar warehouse
1.07	Toilet - men
1.08	Toilet - disabled
1.09	Toilet - women
1.10	Cleaning room
1.11	Warehouse
1.12	Staircase space - public
1.13	Corridor - operating background
1.14	The office of a manager
1.15	Dressing room - employees
1.16	Sanitary facilities - employees
1.17	Utility room
1.18	„Clean zone“ corridor - athletes
1.19	Locker room No. 1 - 18 places
1.20	Locker room No. 2 - 18 places
1.21	Locker room No. 3 / Locker room men - gym - 18 places
1.22	Locker room No. 4 / Locker room women - gym - 18 places
1.23	Locker room No. 5 / Referee - 5 places
1.24	Locker room No. 6 - 18 places
1.25	Staircase space - athletes
1.26	Gym
1.27	Outdoor waste storage



ROOM LIST | CULTURAL CENTER

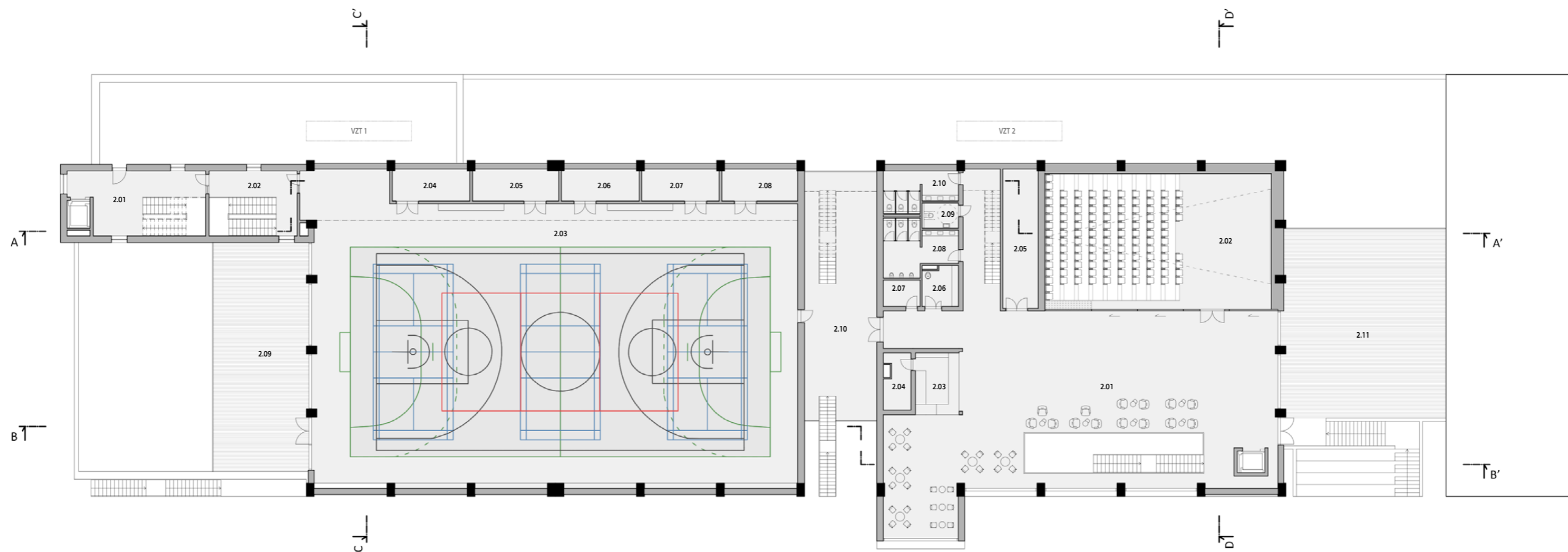
1.01	Entrance hall
1.02	Tickets
1.03	Cloakroom
1.04	Background for employees
1.05	Utility room
1.06	Cleaning room
1.07	Waste storage room

ROOM LIST | COVERED PARKING

G.01	Covered parking - 45 x standard parking spaces + 3 x disabled
G.02	Maintenance room

LEGEND OF CONSTRUCTIONS

	New constructions
	Original constructions



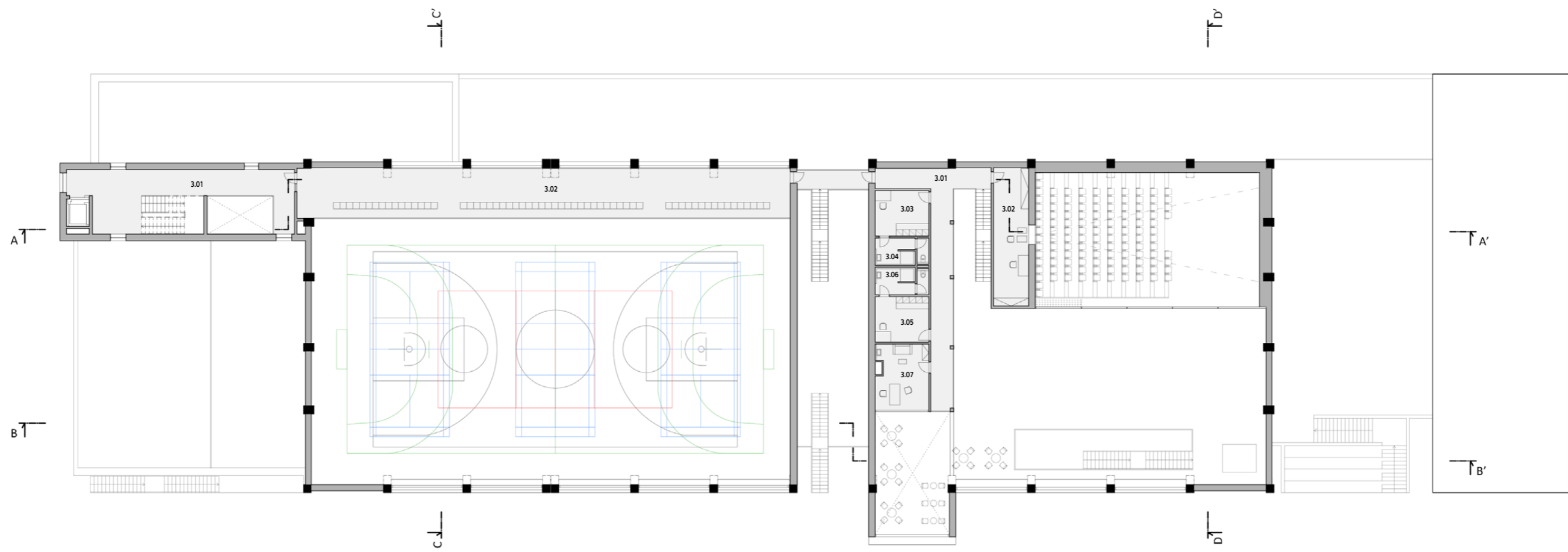
ROOM LIST | SPORTS HALL

- 2.01 Staircase space - public
- 2.02 Staircase space - athletes
- 2.03 Sports hall
- 2.04 Sports equipment warehouse 1
- 2.05 Sports equipment warehouse 2
- 2.06 Sports equipment warehouse 3
- 2.07 Sports equipment warehouse 4
- 2.08 Sports equipment warehouse 5
- 2.09 Outdoor terrace for the public
- 2.10 Outdoor escape route

ROOM LIST | CULTURAL CENTER

- 2.01 Foyer
- 2.02 Multifunctional hall
- 2.03 Bar
- 2.04 Bar warehouse
- 2.05 Warehouse
- 2.06 Cleaning room
- 2.07 Waste storage room
- 2.08 Toilet - men
- 2.09 Toilet - disabled
- 2.10 Toilet - women
- 2.11 Outdoor terrace for the public





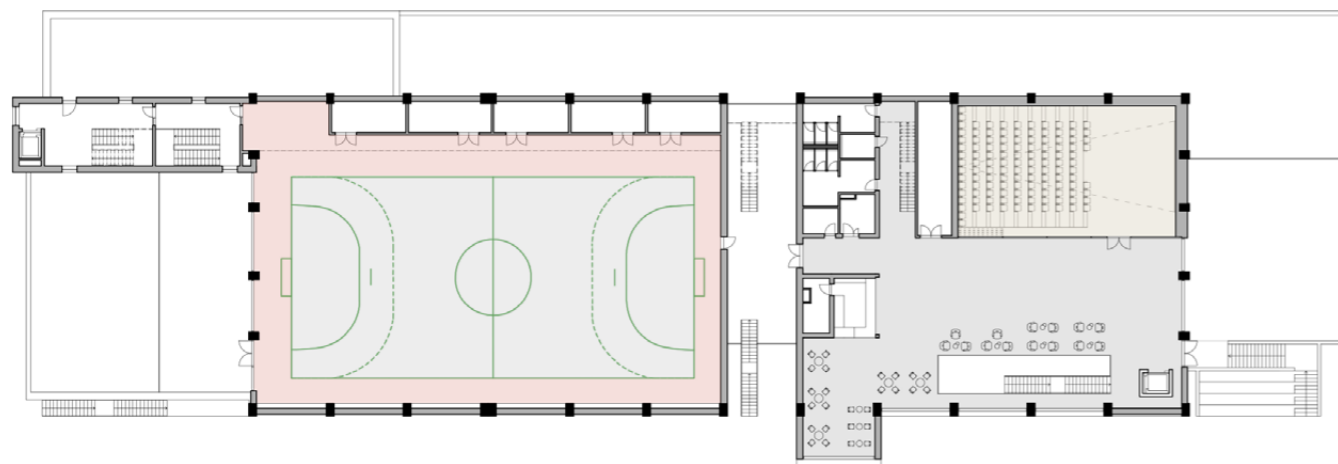
ROOM LIST | SPORTS HALL

- 3.01 Staircase space - public
- 3.02 Spectators gallery - stand

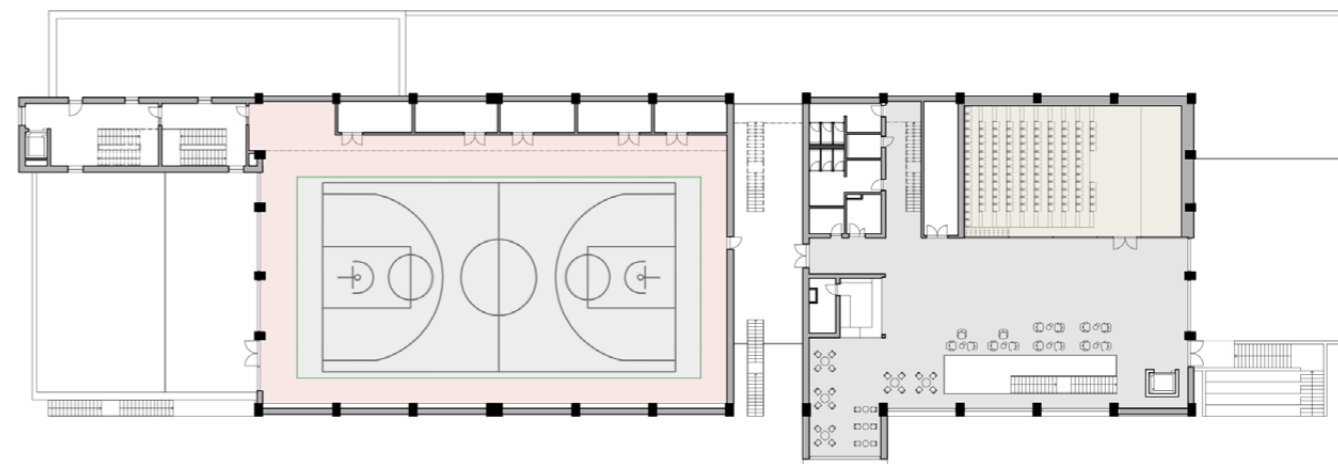
ROOM LIST | CULTURAL CENTER

- 3.01 Corridor - background for employees
- 3.02 Projection cabin
- 3.03 Dressing room - actors
- 3.04 Sanitary facilities - actors
- 3.05 Dressing room - employees
- 3.06 Sanitary facilities - employees
- 3.07 The office of a manager

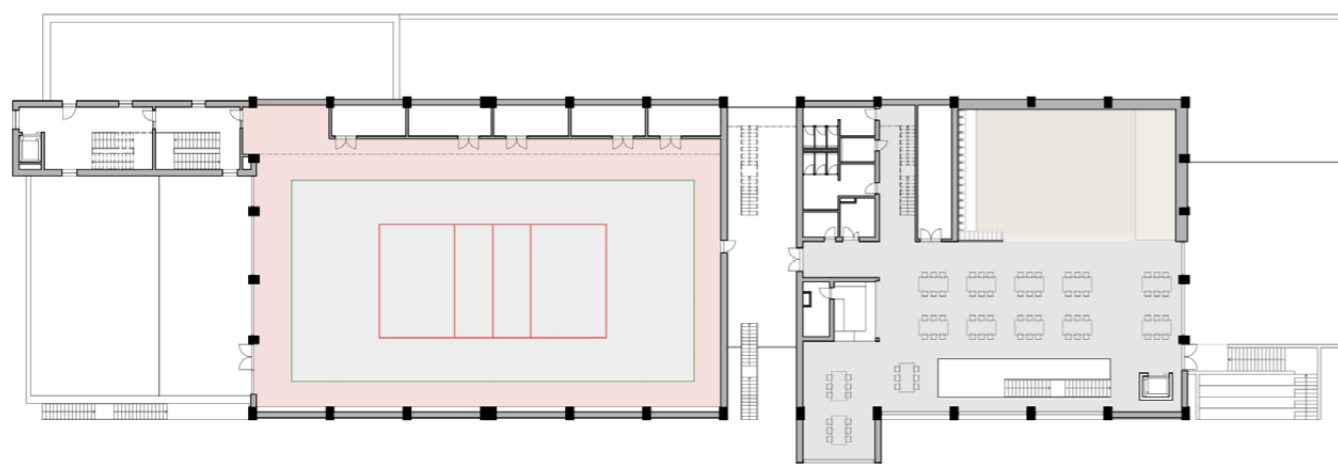




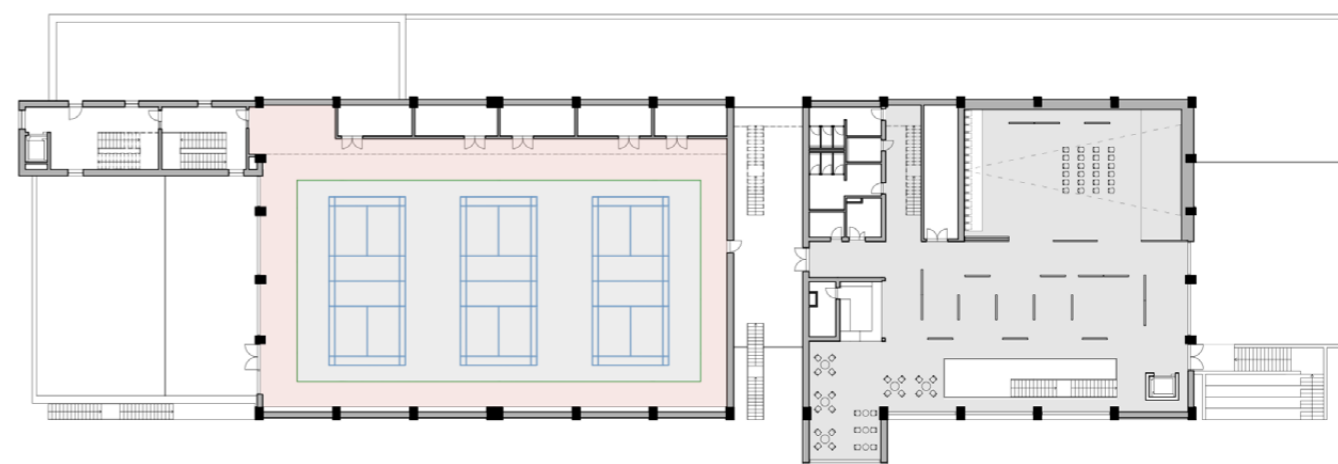
OPTION A | SPORTS HALL - FUTSAL (32 x 16 m + 2,5 m safety distance)
 CULTURAL CENTER - CINEMA HALL (projection, separate foyer from the cinema hall)



OPTION B | SPORTS HALL - BASKETBALL (28 x 15 m)
 CULTURAL CENTER - SMALL THEATRE PERFORMANCE (stage, small properties, separate foyer from the hall)



OPTION C | SPORTS HALL - VOLLEYBALL (18 x 9 m)
 CULTURAL CENTER - DANCE BALL, LOCAL CELEBRATIONS (hall - live music and dance floor)

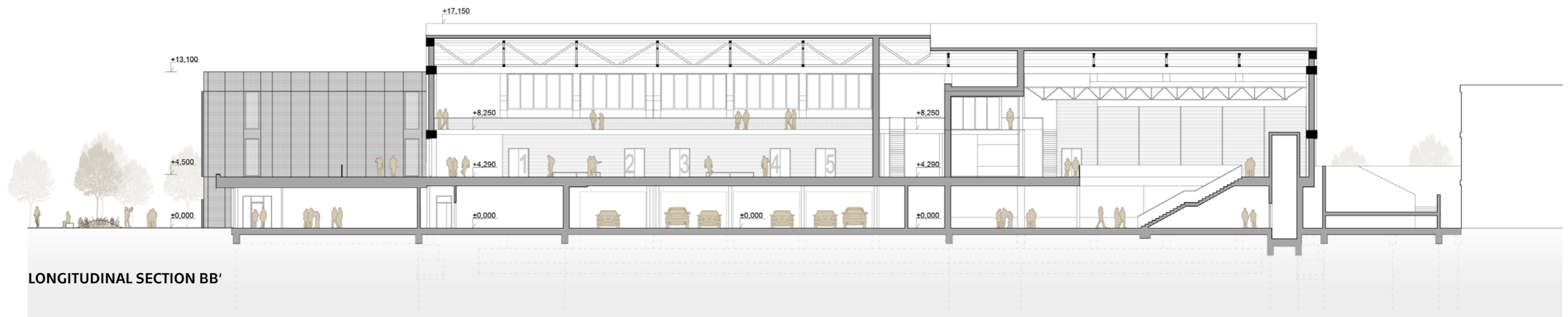


OPTION D | SPORTS HALL - 3x BADMINTON (13,4 x 6,1 m)
 CULTURAL CENTER - GALLERY, EXPOSITION (the hall and the foyer form one common space)

* All dimensions of sport fields are designed mainly for unprofessional competitions.
 ** In the sports hall it is also possible to play floorball, but the field doesn't have regular dimensions.

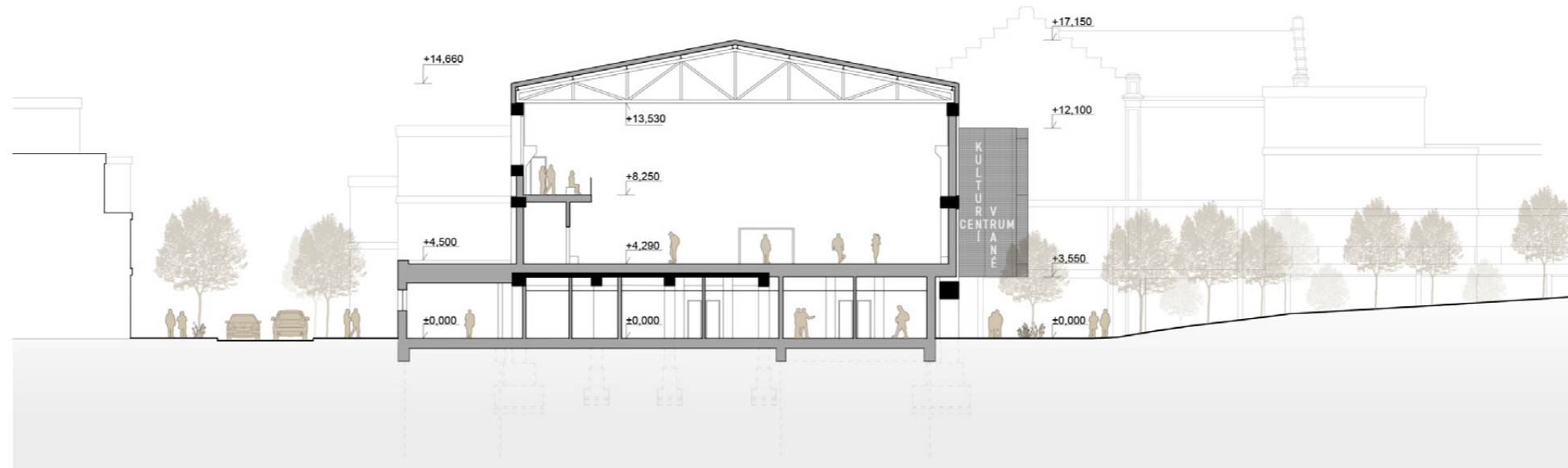


LONGITUDINAL SECTION AA'

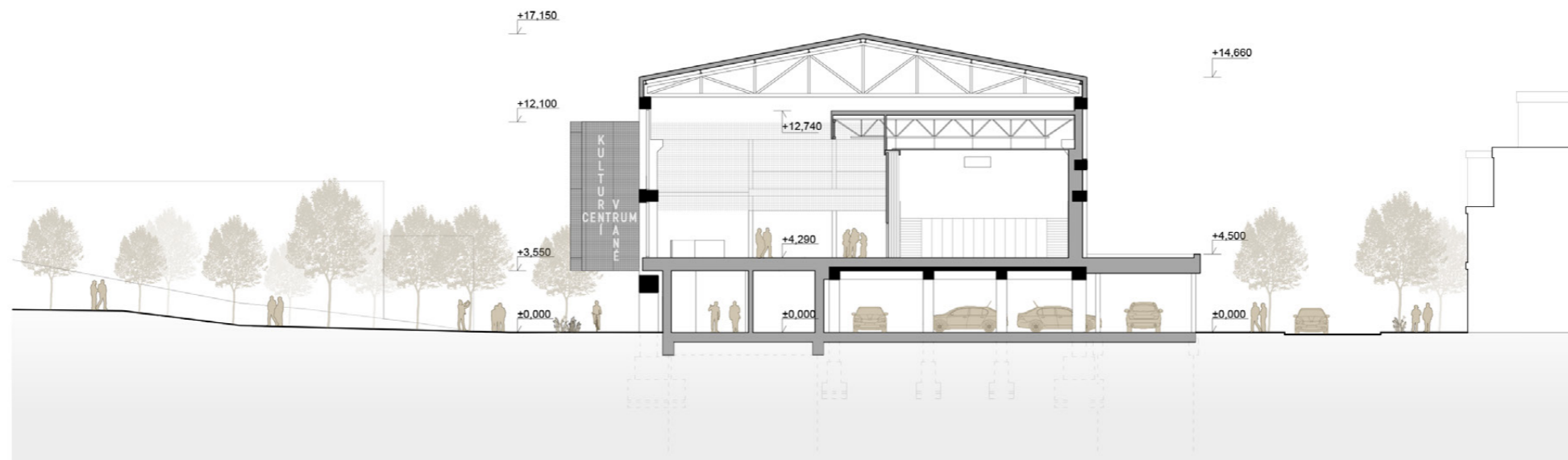


LONGITUDINAL SECTION BB'

CROSS SECTION CC'

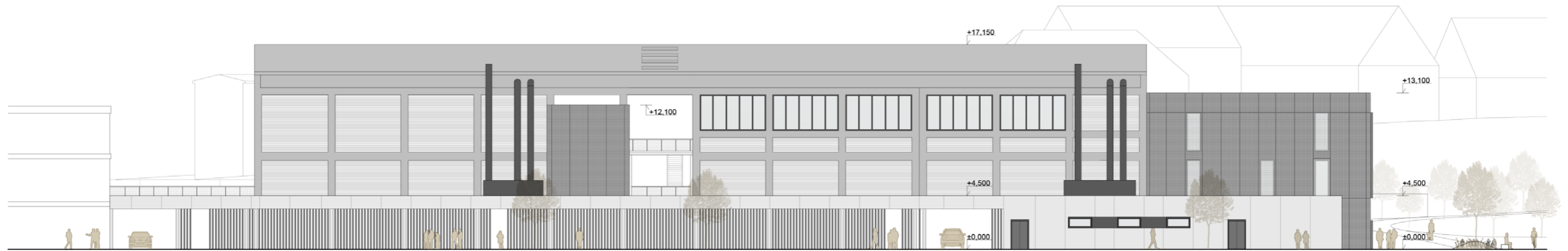


CROSS SECTION DD'





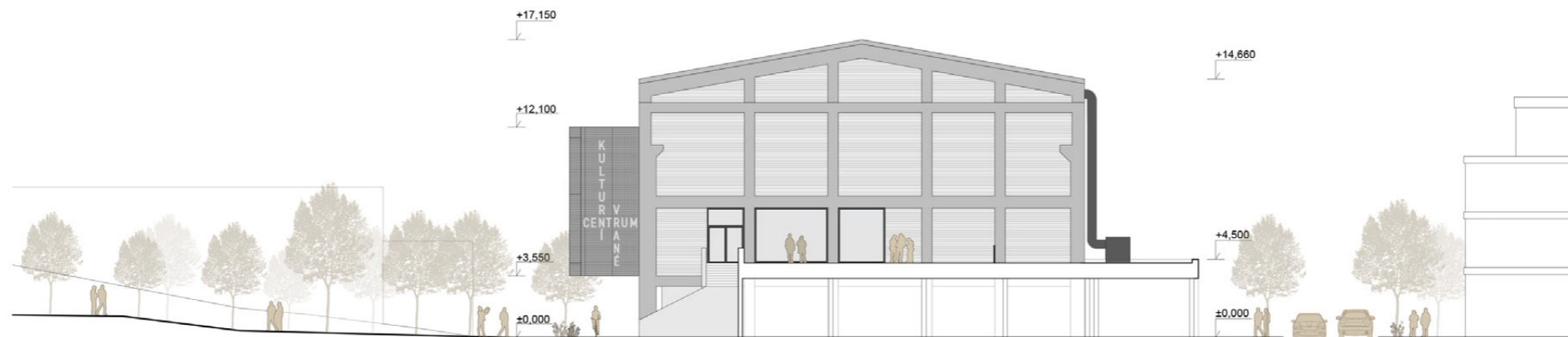
SOUTH ELEVATION



NORTH ELEVATION



WEST ELEVATION



EAST ELEVATION

