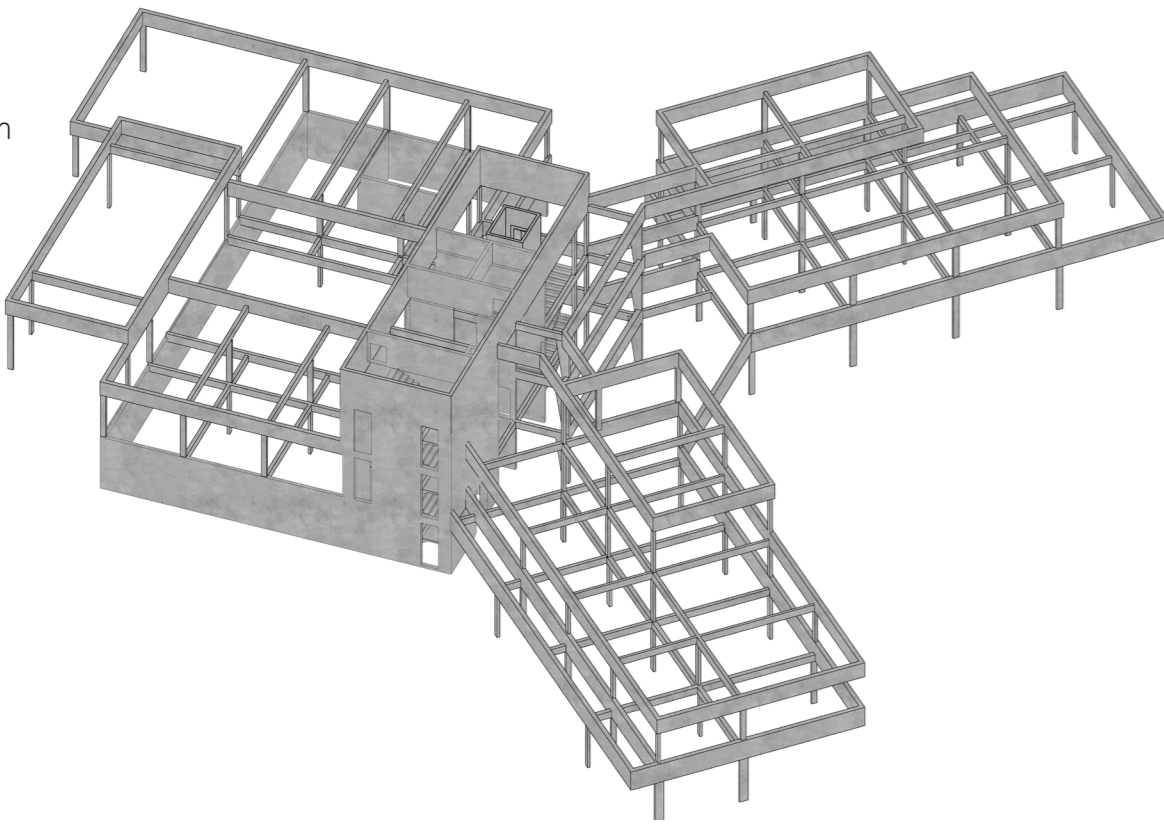
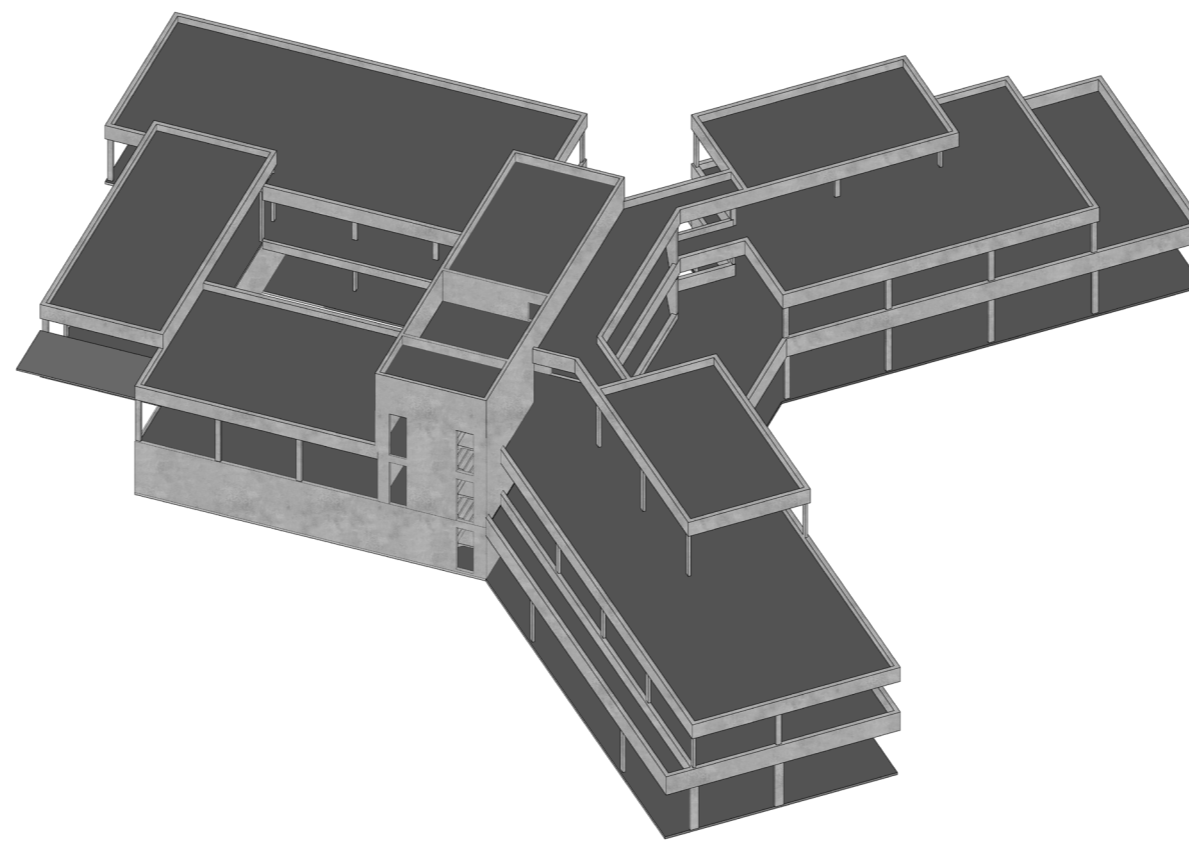


# Technical solutions

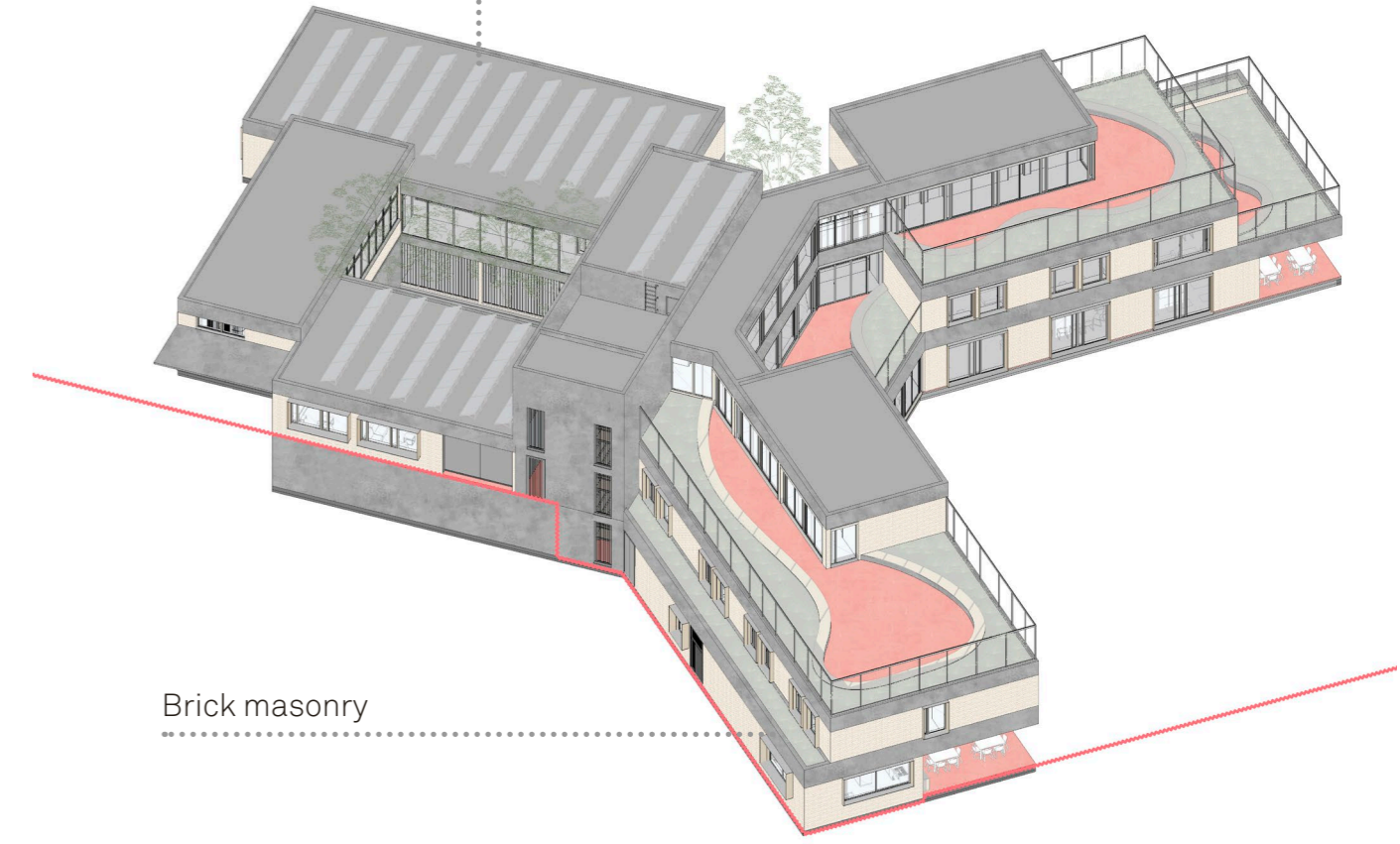
Structure: reinforced concrete column-beam system.



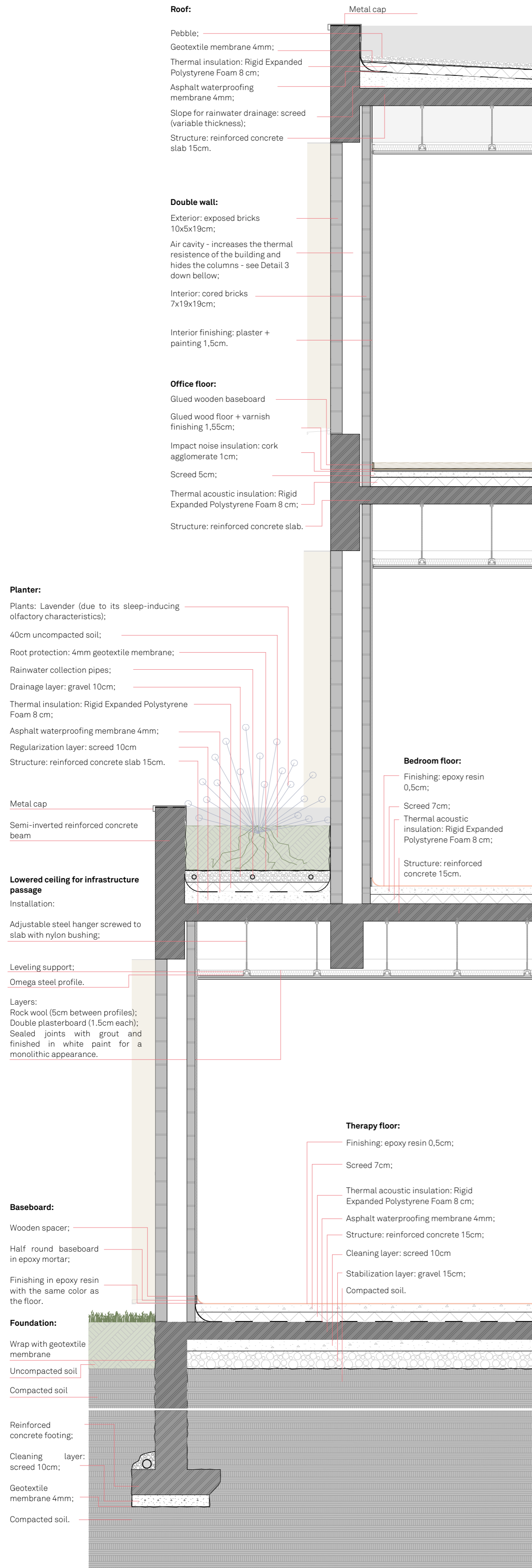
Structure: solid slabs in spans of up to 6m; ribbed slabs in the largest spans (learning cafe; reception and main living room).



North-facing photovoltaic panels with calculated spacing so that they do not shade each other nor are seen from the street.



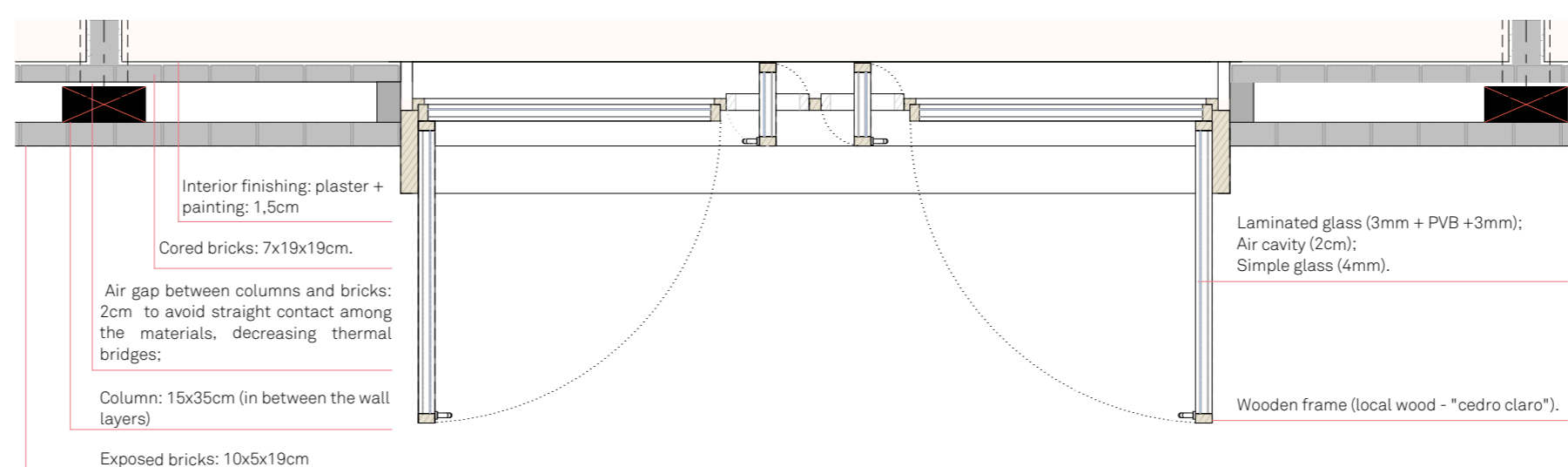
Details:



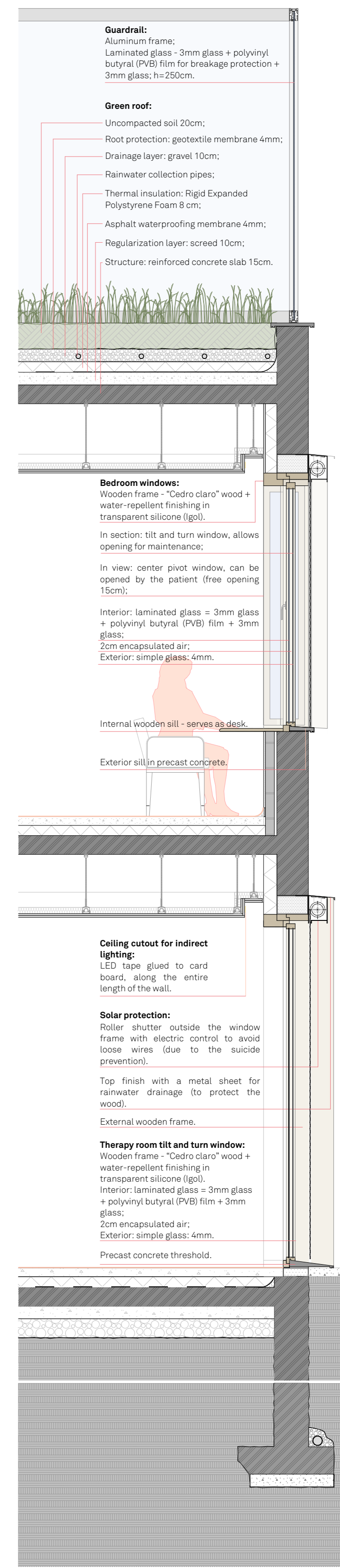
Detail 1



Detail 2

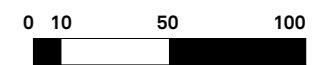


Detail 3



Detail 4

Graphic scale - details



Building steps:

1. Structure.
2. Exterior masonry wall.
3. Interior masonry wall (double wall with air cavity).
4. Thermal insulation of the slabs and addition of the screed (subfloor).
5. Installation of the windows; addition of plastering and painting on the walls; application of epoxy resin on the floor.
6. Installation of the lower ceiling to hide the electrical and HVAC installations.

