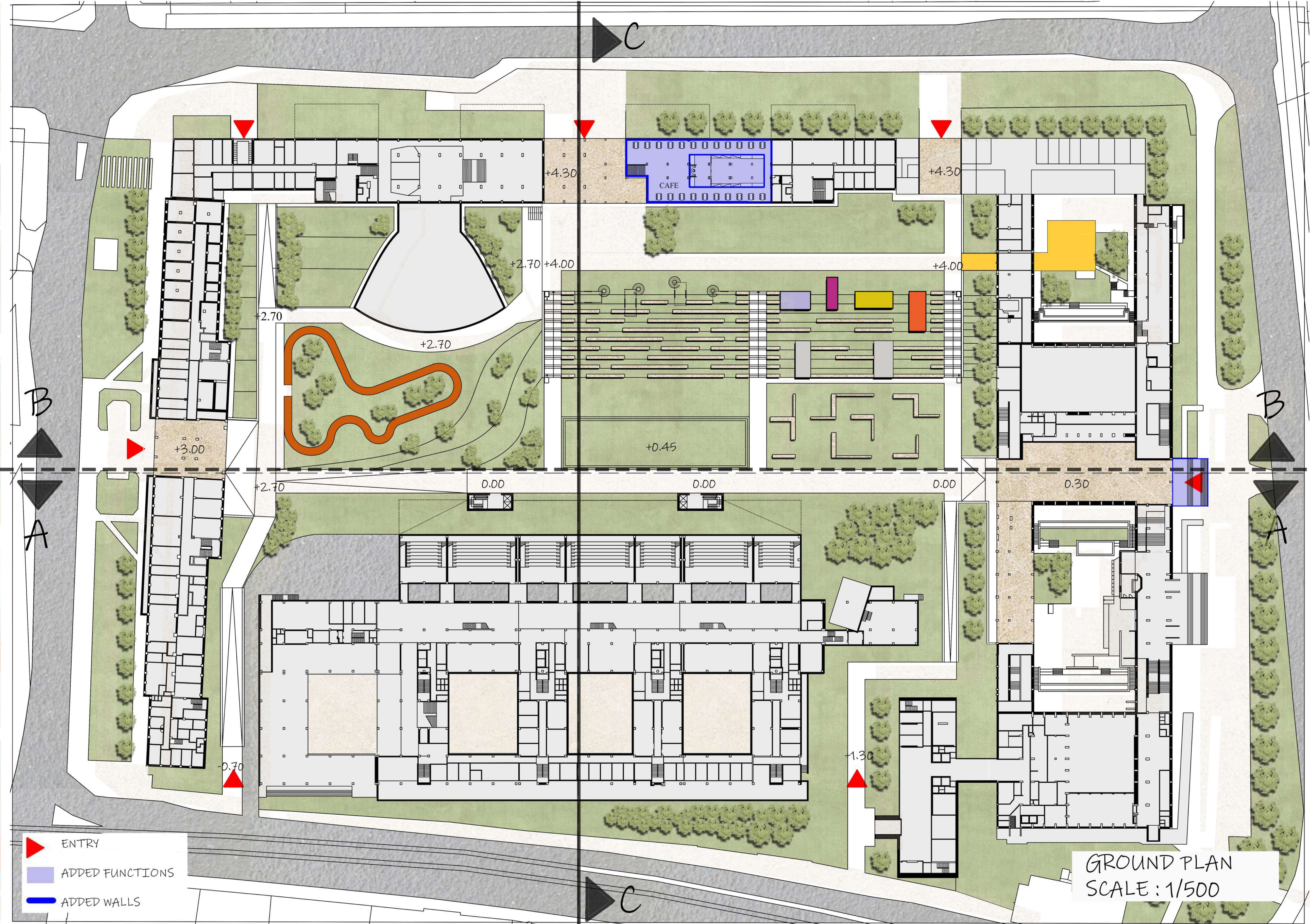
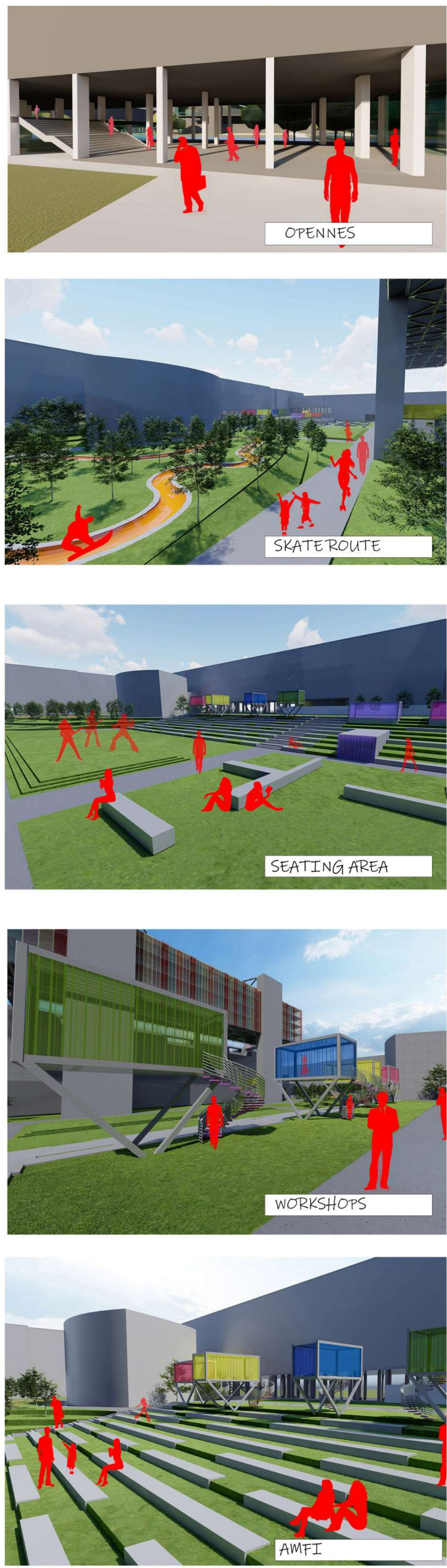
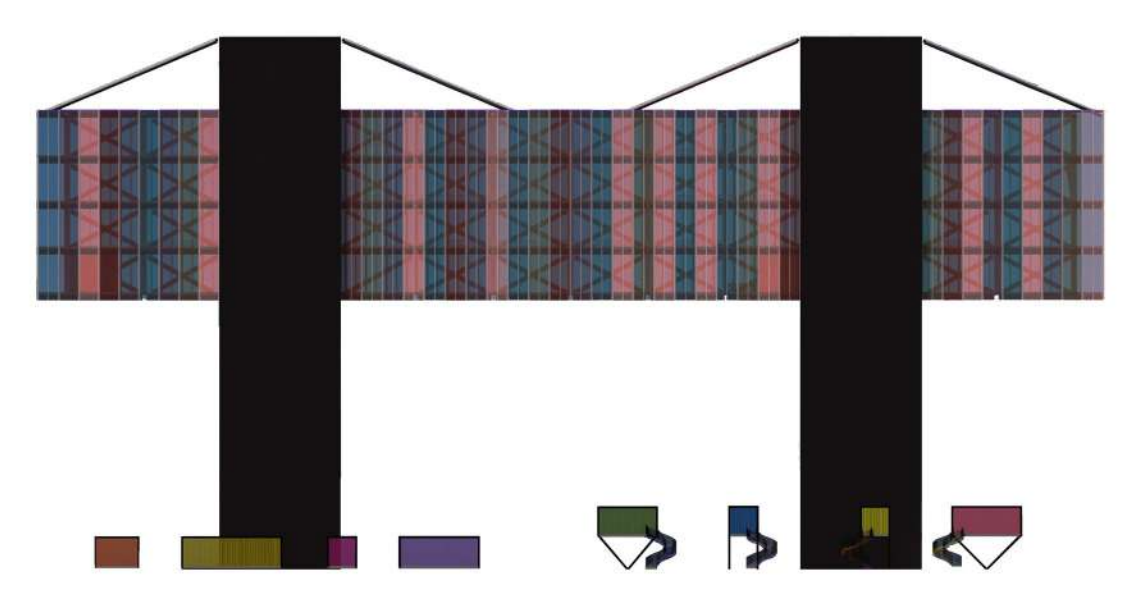
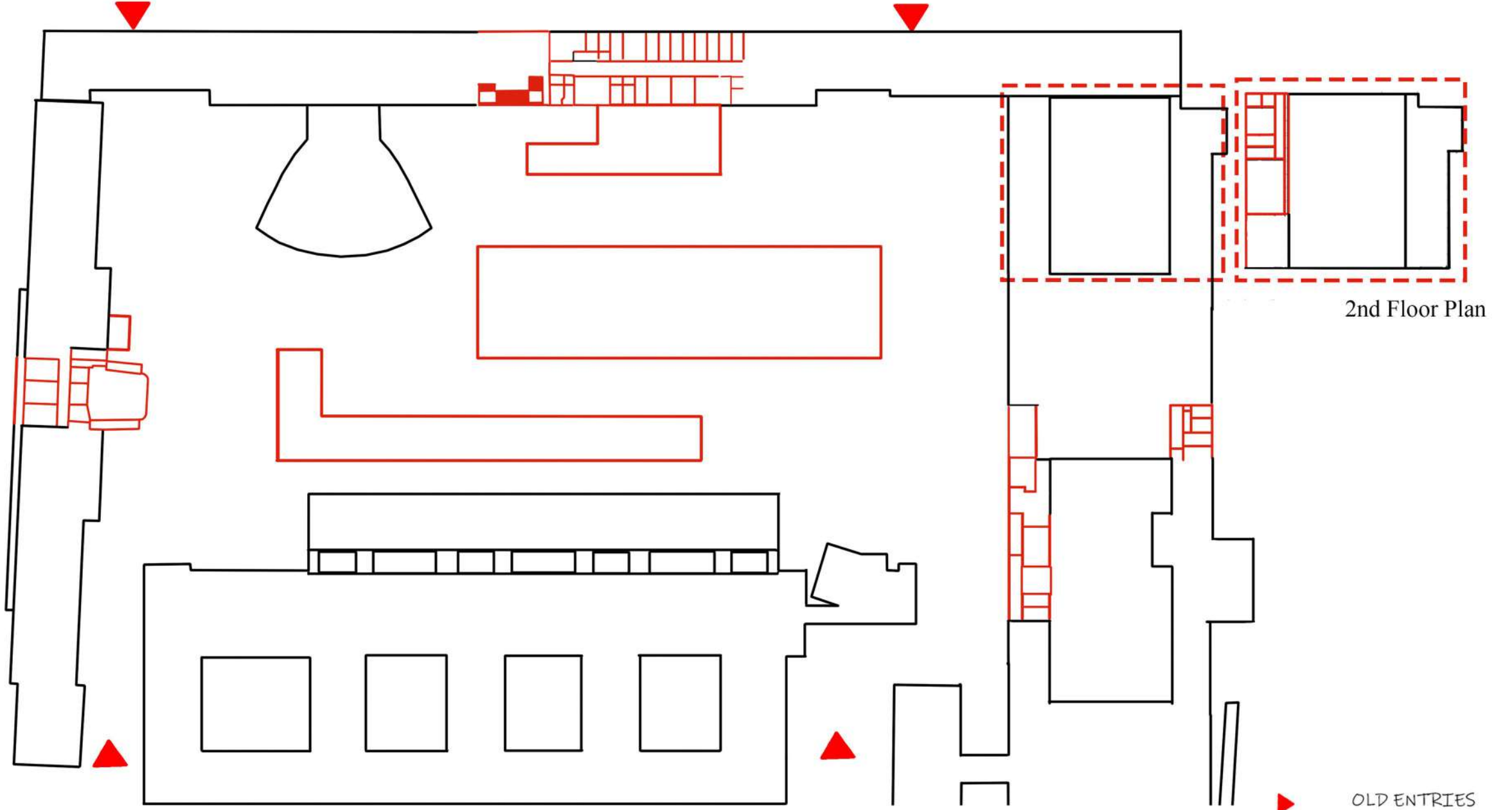


# STU - CENTRAL CAMPUS 2.0 ●●●

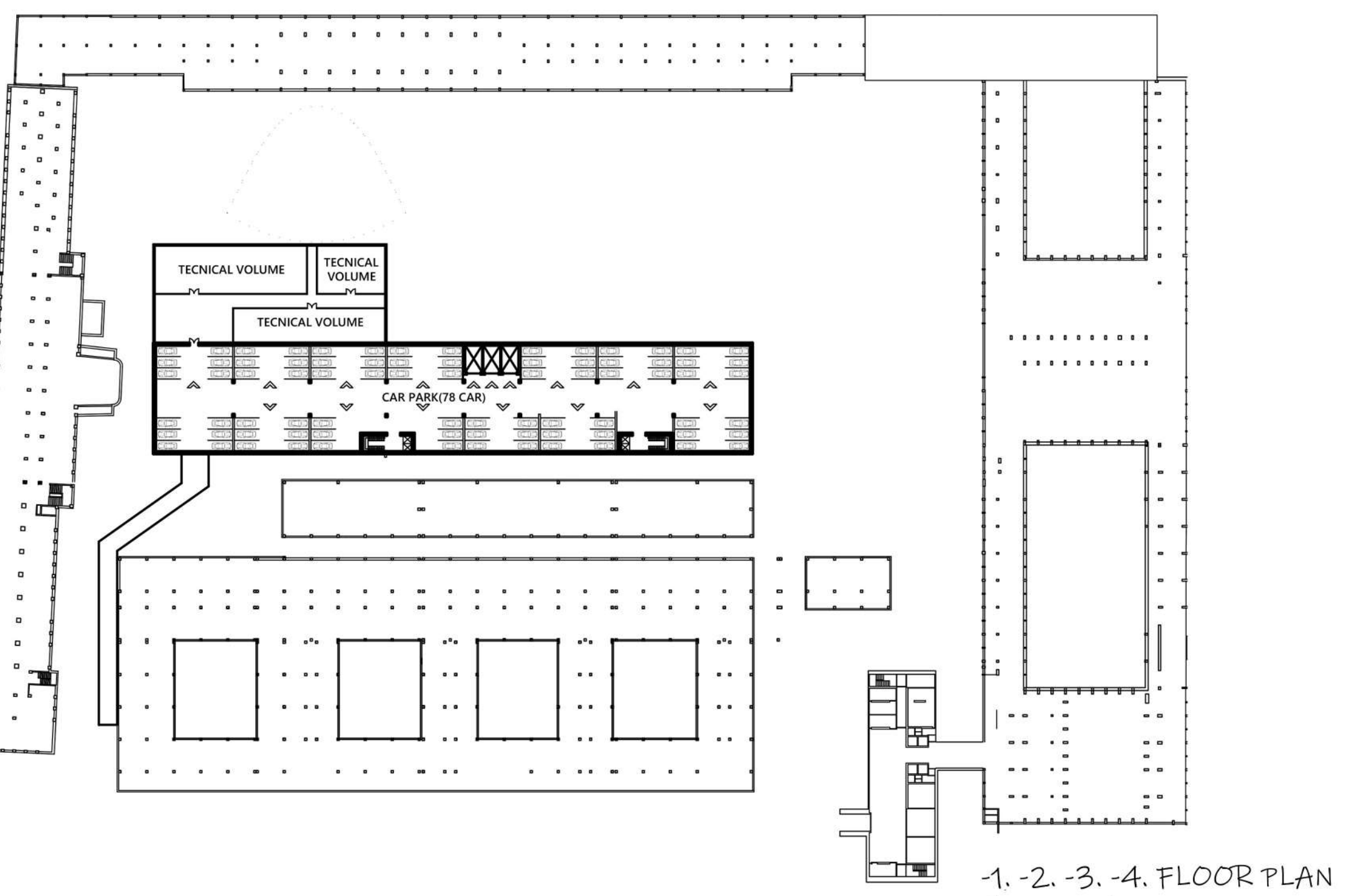


GROUND PLAN  
SCALE: 1/500

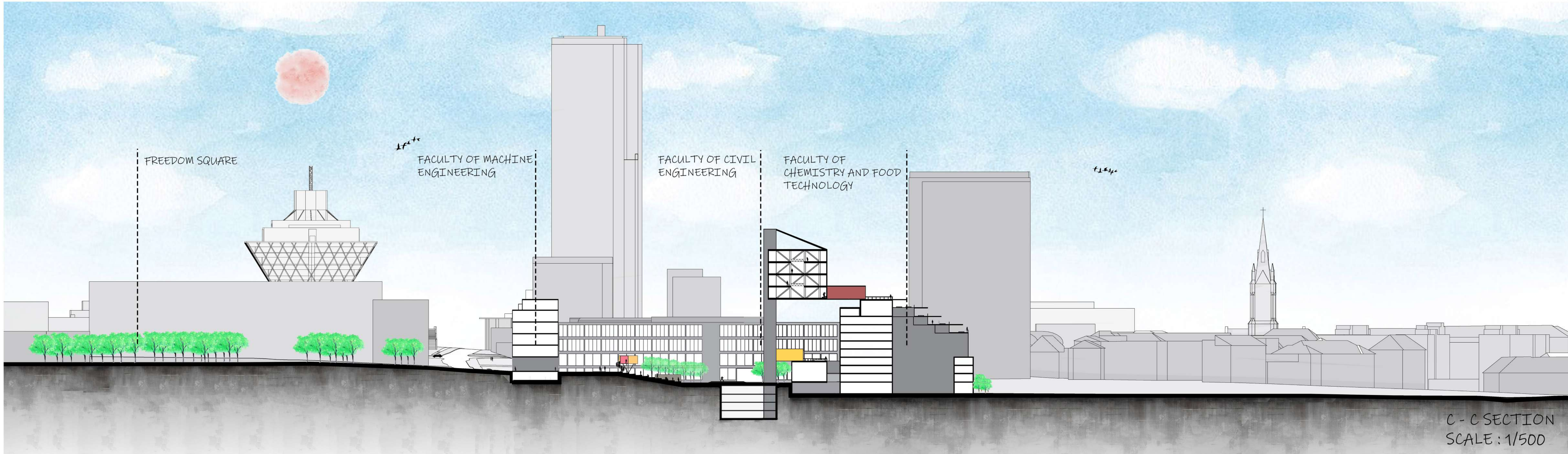
FROM CONCRETE TO GREEN... IN CURRENT CONDITION, THE COURT CONSISTS OF A PARKING LOT AWAY FROM THE CONCRETE COATED CAMPUS. THIS SITUATION, INVESTIGATED ON THE BASIS OF THE PROJECT, HAS BEEN REMOVED FROM THE EXISTING TO SET UP CAMPUS LIFE. THE CURRENT SITUATION HAS BEEN CHANGED WITH THE NEW 4-STORY UNDERGROUND PARKING PARK TO WORK WITH THE EXISTING UNDERGROUND PARKING PARK. RECONSTRUCTED PUBLIC CAMPUS AREA IS SIDENDATED ON DENSE GREEN. THIS CODING HAS BEEN CONSIDERED TOGETHER WITH THE STAGE AREA. CONTINUOUSLY, MULTI-PURPOSE WORKSHOP UNITS TO WORK BOTH PRIVATE AND PUBLIC HAVE BEEN PLACED. THE SKATE SKATEBOARDING TRACK AREA, ALSO IN GREEN, AND THE REST AND SPORTS AREAS ARE CONSIDERED TOGETHER.



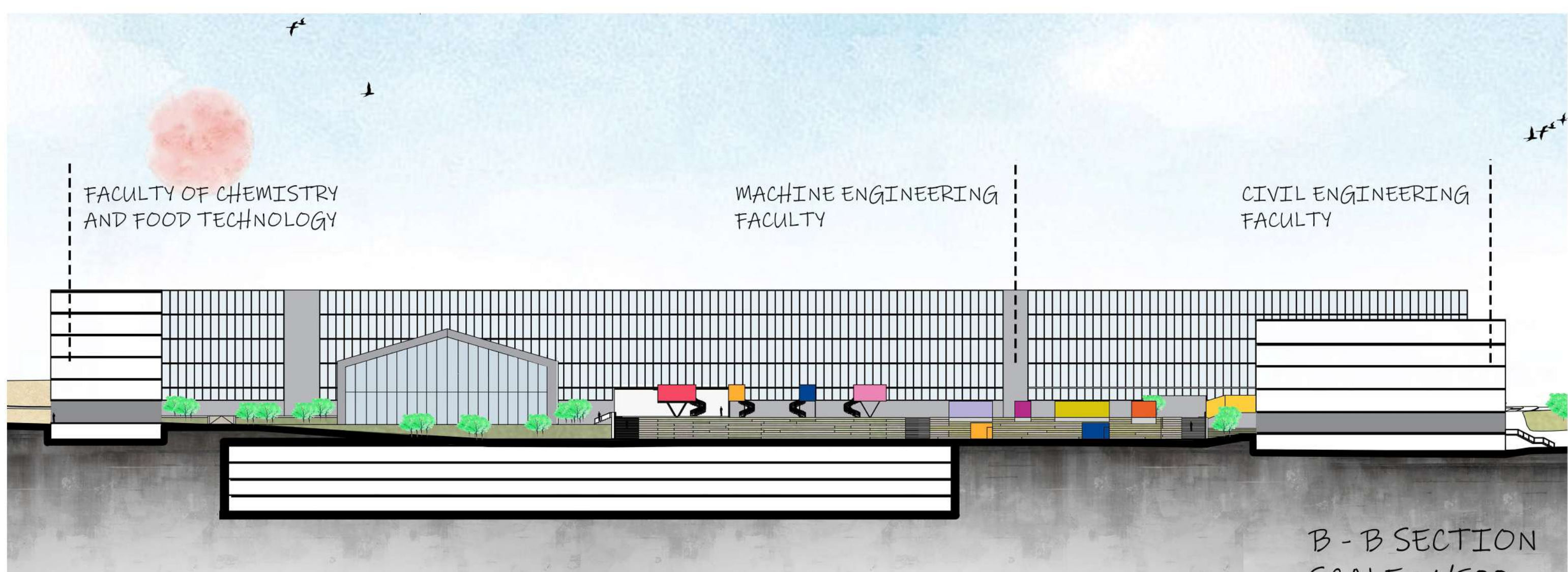
2nd Floor Plan  
OLD ENTRIES  
REMOVED WALLS  
SCALE: 1/1000



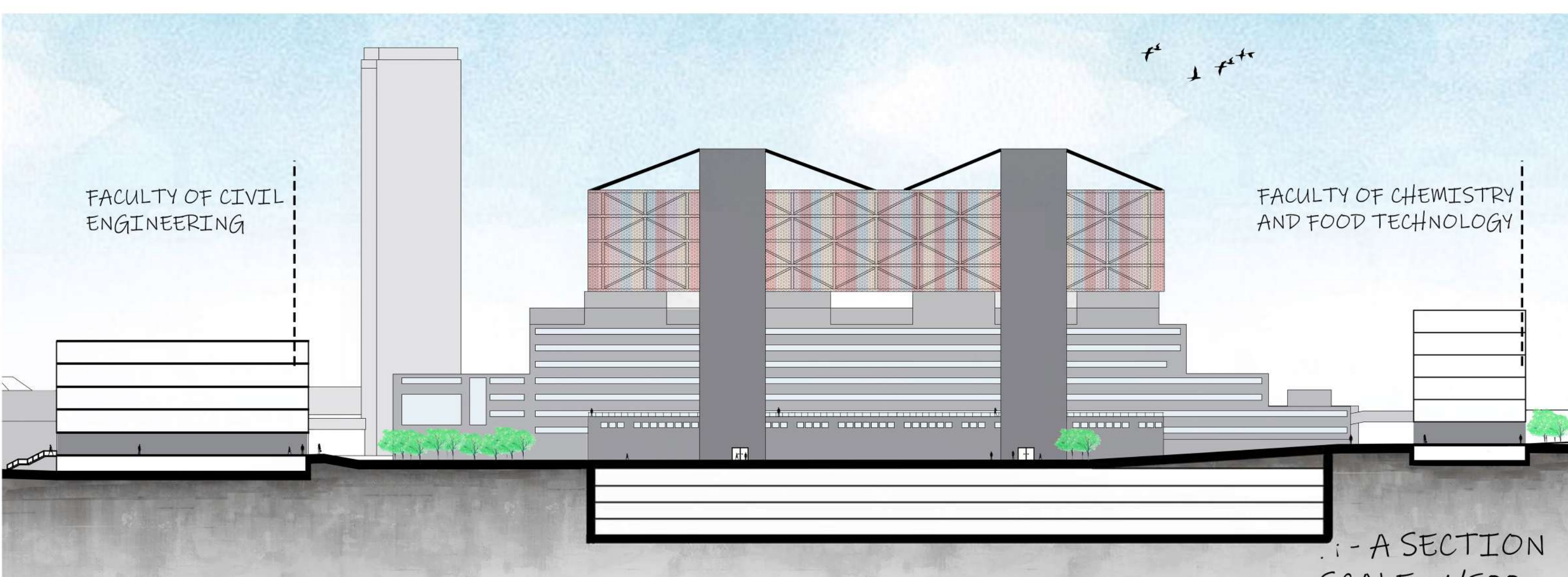
1-2-3-4. FLOOR PLAN  
SCALE: 1/1000



C - C SECTION  
SCALE: 1/500



B - B SECTION  
SCALE: 1/500



A - A SECTION  
SCALE: 1/500