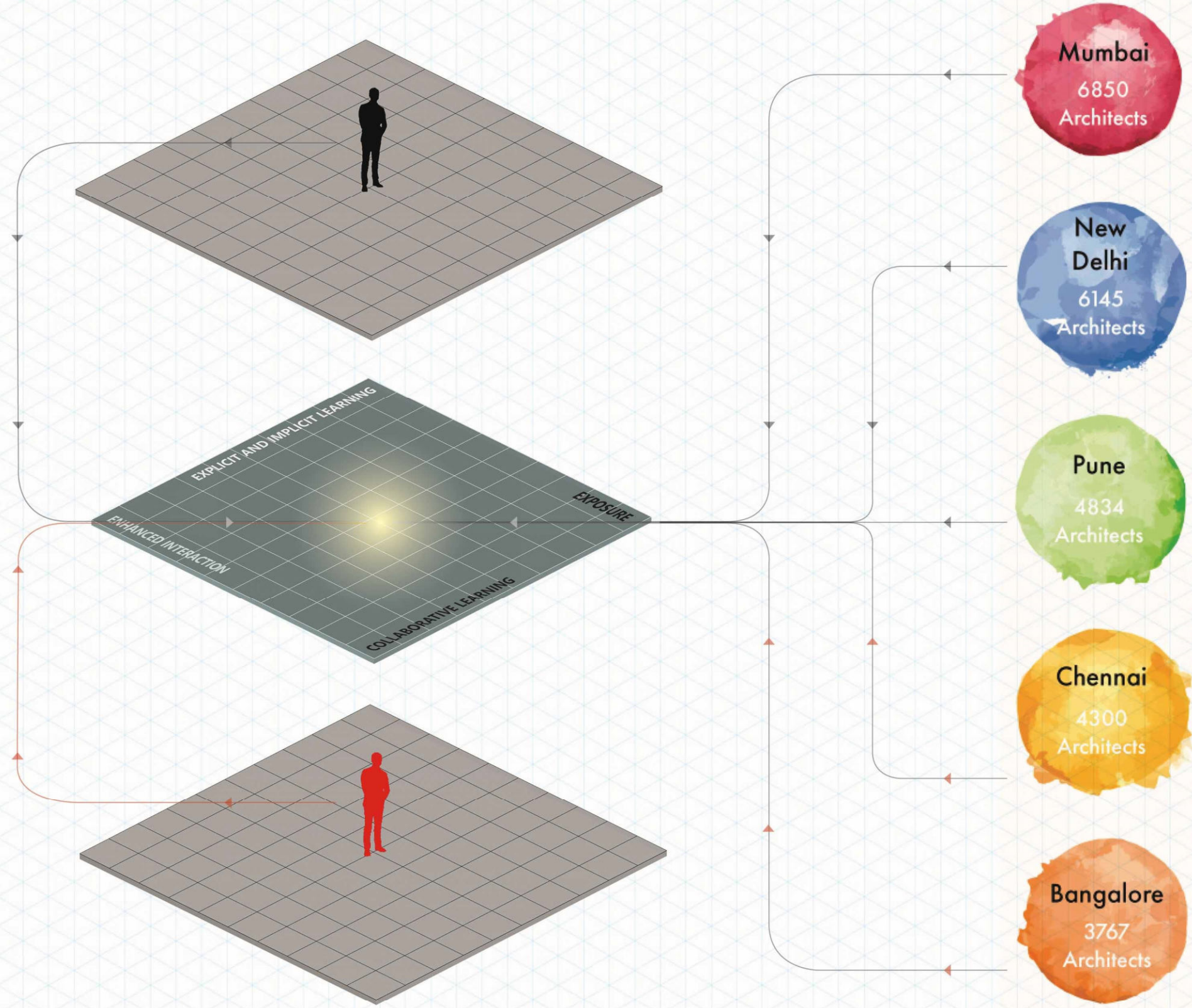


the need

ANSWERING WHAT, WHY & HOW

HOW

Design Process followed throughout the project, from site study to creation of 2D and 3D set of drawings



No. of Architects per city
approximately 90, 796 architects in India

THE MASTER STUDIO

Community of Architecture and Design

There is always a question about whether the studio based learning in architecture colleges is enough for professional practice or something needs to be rethought about it.

The curriculum at architecture schools often focuses on teaching students to think like design directors and to make choice based on aesthetic value & theory.

Undoubtedly the current courses in architecture schools makes the students skillful at conceptual levels but the real world is a whole new different thing.

Designing in real world is more about understanding the client's needs & vision, considering the budget, social trends, giving priorities to the context, about working with different agencies & so on.

Finding ways to better integrate both education and practice is of paramount importance because doing so will better equip students and emerging professionals to step into practice with confidence and set them up for success.

If we can incite architecture and design students to step outside their own worlds and teach them to think more about the real world implications of their work, we'll not only better prepare them for professional environments but will teach them to be more creative and to expand the boundaries of architecture and design even further.



WHAT

Therefore efforts should be made to integrate practical knowledge right from the early stage & to do so the professionals and the students need to bridge the gap between them.

WHY

With soaring number of architects produced every year (around 21,380), the question is are we producing quality professionals or quantity professionals?

the given

FORMING NARRATIVE TO ENHANCE INTERACTION AND COLLABORATIVENESS

4



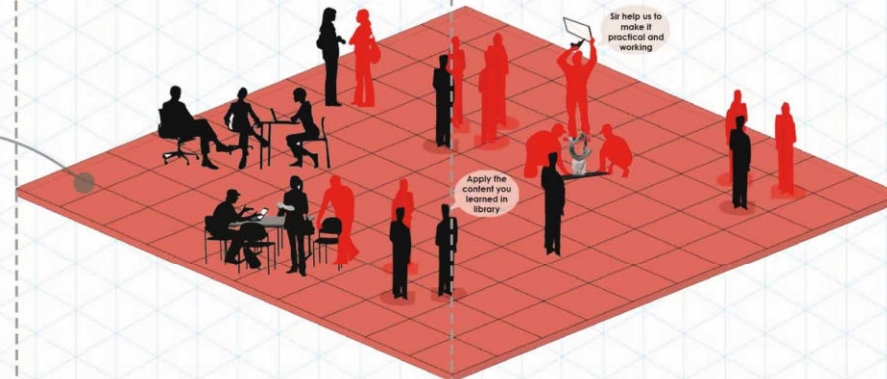
REFLECT



3



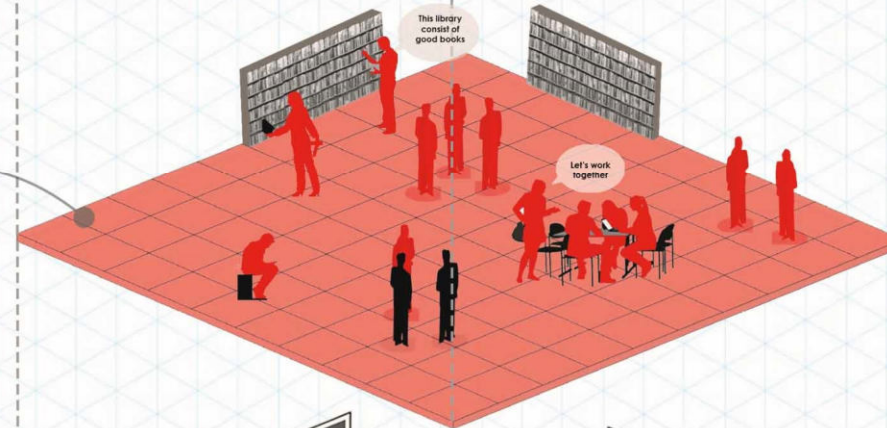
IMPLICIT



2



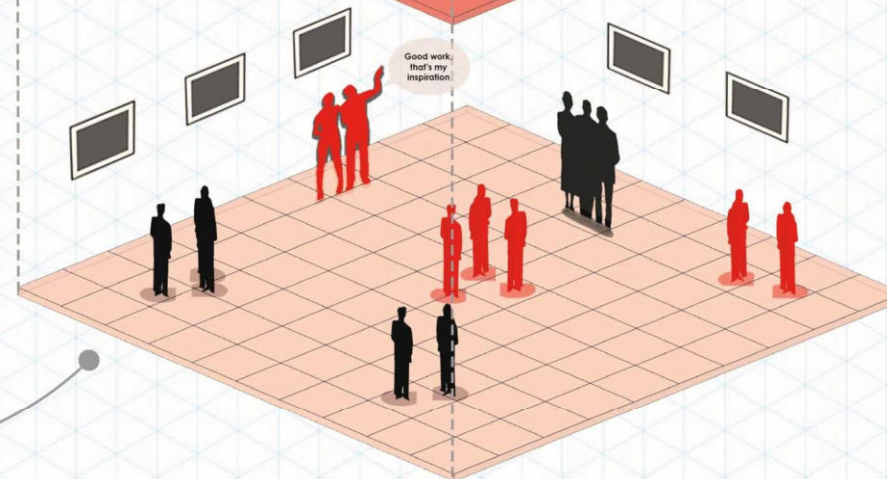
EXPLICIT



1



SET



Project Name



APPLY (IMPLICIT LEARNING) | STAGE 3

Implicit knowledge is the practical application of explicit knowledge. It is structured around the practices that include action-learning, project-based learning.

It is a stage of rehearsing yourself by applying explicit knowledge in the everyday world which reduces risk of trying out new knowledge in hypothetical situations.

REFLECT | STAGE 4

In the final stage, students are encouraged to gain constructive criticism from professional architects and work with the feedback received. It allows them to cultivate humility and to overcome their cognitive biases.

This stage also looks for friendly participation in different focus groups and discussions for collaborative learning.

Architecture is not only a form of visual art but also a form of spiritual, emotional, illustrative, and theoretical art. And as said by Van Gogh, The best way to learn any art form is by observing and practicing.

Keeping in mind the above-mentioned thoughts, the built form was divided into 4 stages to effectively engage learners emotionally, physically, and intellectually with the professionals, leveraging both conscious and unconscious attainment of knowledge. They ensure that explicit knowledge is integrated into implicit knowledge in a way that makes it useful and persistent.

These four stages are SET, EXPLICIT LEARNING, IMPLICIT LEARNING and REFLECT

SET | STAGE 1

The SET stage is the primary stage where students encourage and inspire themselves as well as observe and document thoughts, and works of other accomplished professionals/fellow mates to set a goal for focused learning.

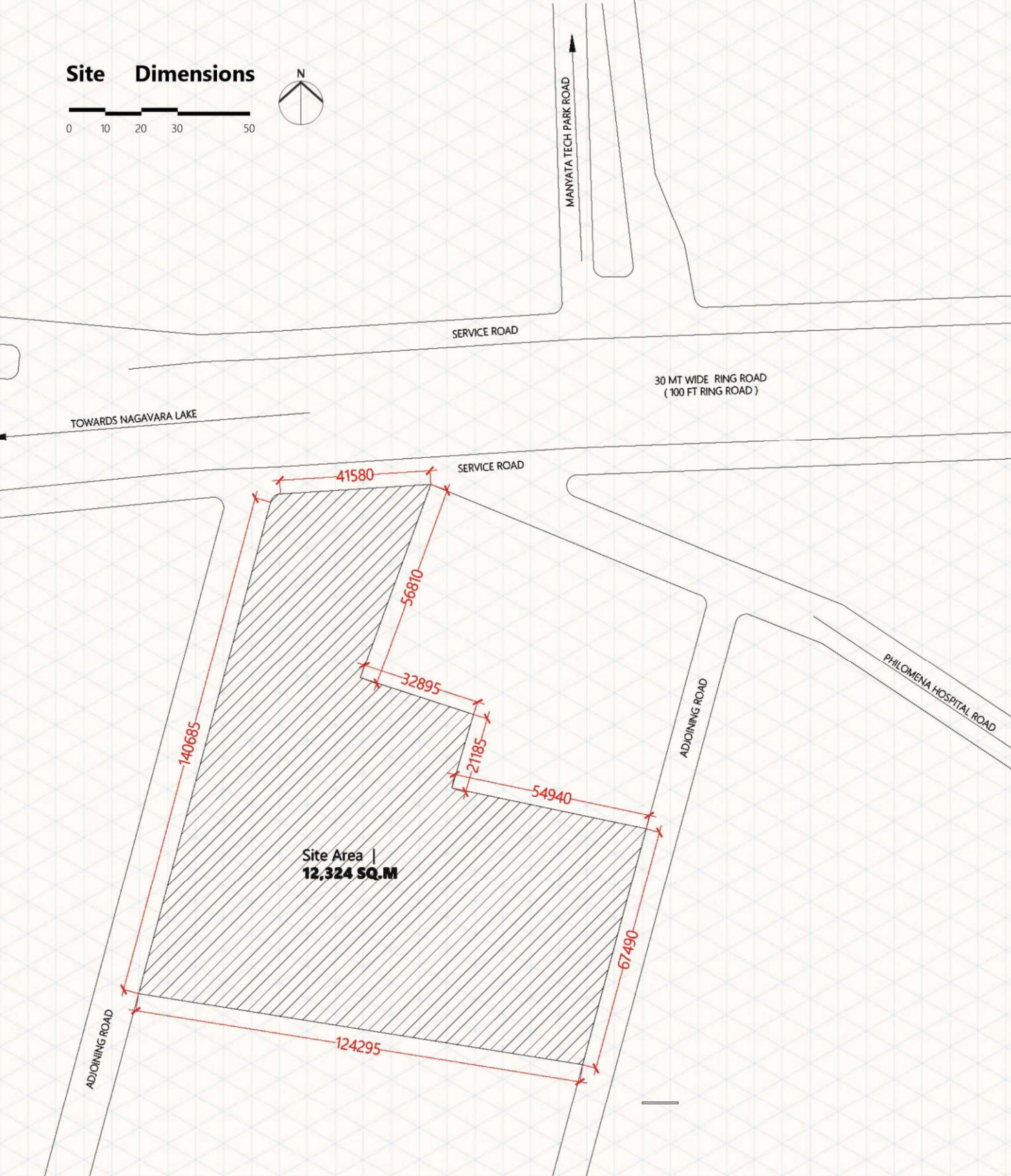
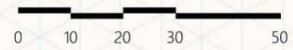
SEEK (EXPLICIT LEARNING) | STAGE 2

After moving from the SET stage, in this stage, they seek and start evaluating the information.

It is structured around practices that involve active listening, seeking clarification, research, and critical thinking which happens by accessing the academic and scholarly materials and by listening, which connects us to a specific subject at a critical level.



Site Dimensions



Bangalore of the yesteryears was a city of gardens; cool, pleasant and green. In addition to the 2000+ species of trees which contributed to the large biodiversity here. The undulating terrain of the city allowed formation of lakes -- natural and manmade -- that were interconnected.

As the 'Garden City' transformed into the 'Silicon Valley of India', the city's rapid, uncontrolled growth turned this **biodiversity haven to a concrete jungle.**

Garden city, garbage city

Trash management is reaching a critical point in Bangalore.

Newspapers addressing the problems of Bangalore as a city

PROXIMITY | Synopsis

1. Proximity of high traffic, water body, schools
2. One side residential one side Elite offices
3. Less than a km away biodiversity park, convention centre
4. Site covered on all sides with road

CLIMATE | Synopsis

1. Hot and humid - passive cooling strategies more beneficial, ventilation mandatory.
2. All months with high humidity levels with cool breezes.
3. Frequent rainfall throughout the year.
4. Use of Venturi effect to deal with wind movement within spaces.

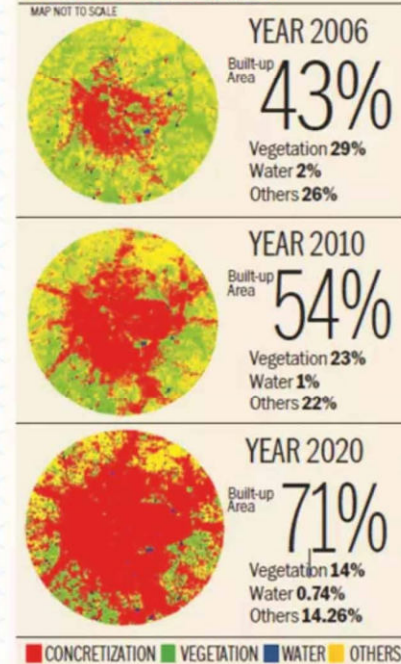
- Majorly Residential
- Majorly Commercial Offices
- Major Green Area (Biodiversity Park on right)
- Nagavara Lake

Legend



Proximity Map

FADING GREENERY

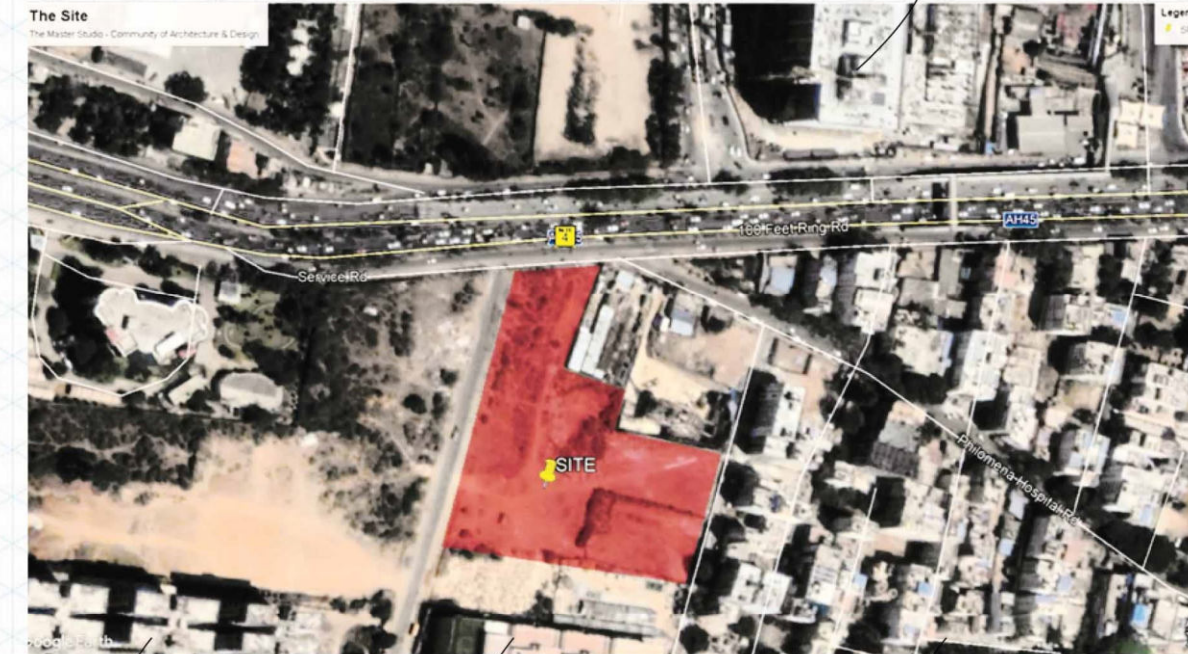


Source: Study Report by Ramachandra TV et al of IISc

site introduction

ABOUT SITE; SITE DIMENSIONS; SITE'S PROXIMITY AND CLIMATOLOGY

Manyata Embassy Business Park
High end Offices



Hanging Gardens
Residential Apartments

Dhee Global School
High School

Residential

Site Location

Site Area

Margins

No. of Floors permitted

Max Ground Coverage

Basement

Bangalore , Karnataka(India)
12,324 SQ.M
All Sides 6 MTS
G + 8
60% of total site area
6 MTS below ground

Bangalore, the capital of Karnataka is the second fastest growing metropolis of India. The bustling cosmopolitan city is also known as "Silicon Valley" of India for being a major IT hub of the nation.

CITY CENTRIC STUDY | Results of constant spatial and population growth

1. Garden city no more
2. Self-sufficient building requirement
3. Reduced green and public spaces
4. Rising pollution
5. Declining sources of water



site conceptualization

UNDERSTANDING IMMEDIATE CONTEXT; FORMING DIAGRAM

ABSTRACTION

ABSTRACTION
DISTORTION
FRAGMENTATION
ABSENCE OF GRAVITY
PLURALITY
A LEARNING TOOL

The Malevich brought with himself a Russian avant-garde art movement called 'Suprematism' which unveiled to the world that with a simple set of colors and geometries one can express the pure feeling of abstraction and weightlessness. He used to believe that art was meant to evoke pure feelings and no longer cares to serve the state and religion.

This composition is being characterized by four principles of Malevich's work i.e. abstraction, distortion, fragmentation, and the absence of gravity. It breaks away from the masses around the site and creates a weightless fragmented outer geometry which appears to float against the gravity. It allows us to be free from the burden of the architectonics.

FRAGMENTATION

ABSENCE OF GRAVITY

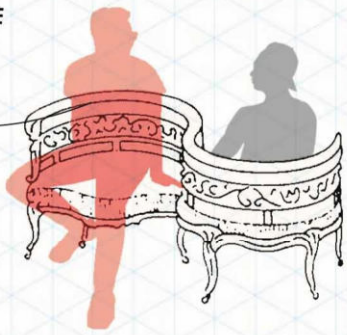
PLURALITY

DISTORTION

module evolution

EVOLUTION OF MODULE; PLACING IT ON SITE

TETE-A-TETE



A

MODULE'S FORM GENESIS

TETE-A-TETE

"Tête-à-tête" literally means "head-to-head" in French, and the seating creation allows just that. Its S-shaped, serpentine form encourages two people to face each other and engage in conversation, yet still be visually tied to their surroundings.

The thought behind creation of such a furniture that can engage people in intimate conversations, led to the development of a module that works on a similar phenomenon.

ABOUT THE MODULE

The module is divided in such a way that the professionals and students can have their own personal spaces, but still stay tied/ connected through an inclined semi private area (the reflect stage) to encourage a collaborative and higher practical sharing of knowledge.

The students also get easy access to the informal areas of implicit spaces like offices, through this inclined semi-private area i.e **THE REFLECT STAGE**.

B.3

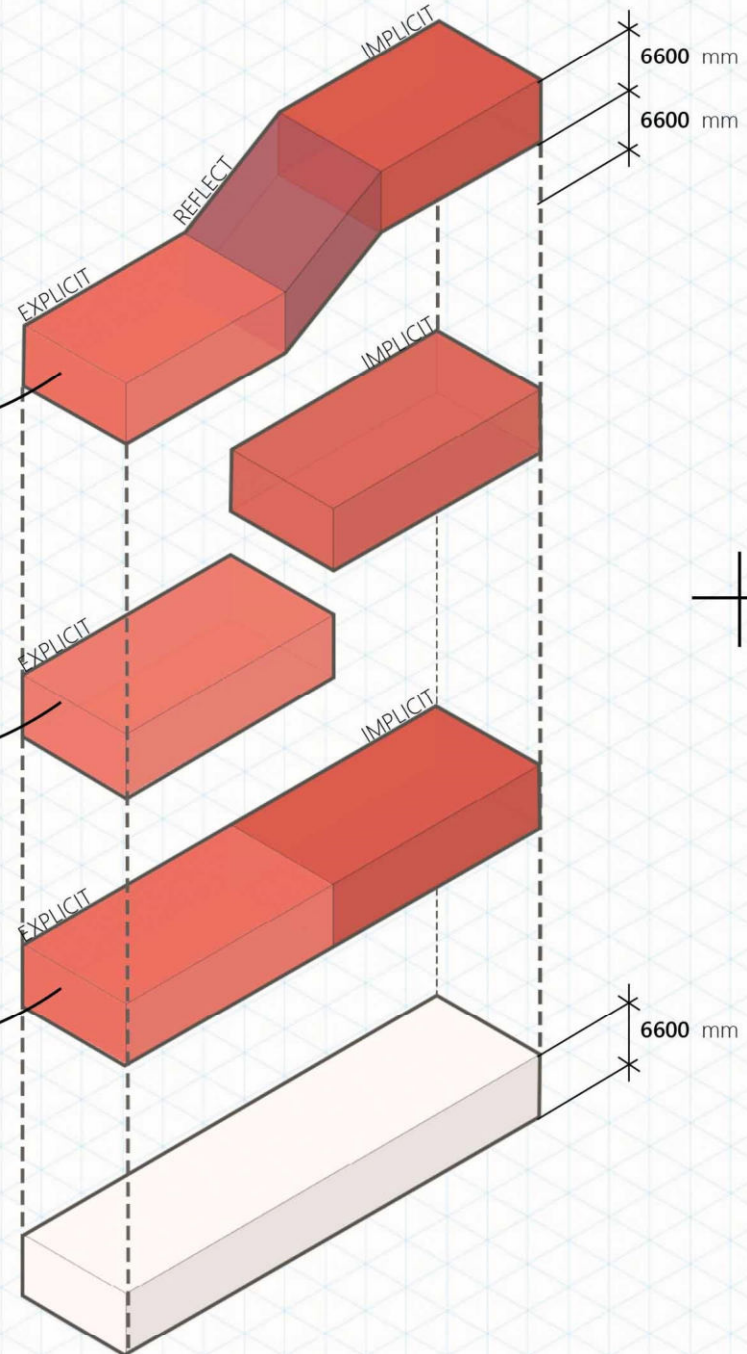
Adding a semi private, collaborative space between the two to allow easier and increased communication

B.2

Creating a separation between implicit and explicit spaces

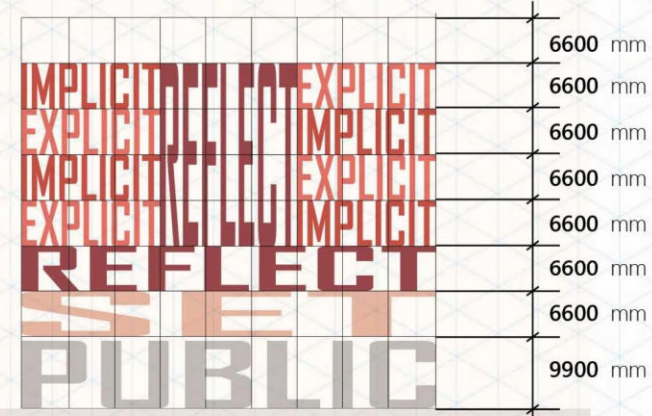
B.1

Dividing the module into two halves of implicit and explicit spaces



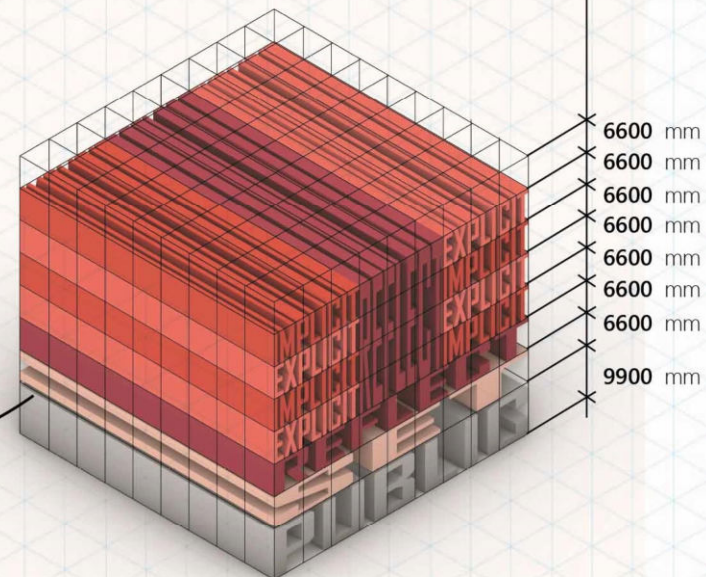
C.2

Proximity of two implicit space to every explicit space for better communication between architects and students.



C.1

Bangalore thrives of open green public spaces. The upliftment of built form by 10m gives a clear space for a public garden below encouraging pleasant and cool afternoons



M7

M8

M5

M6

D.2

Modules On 6Th Floor And 7Th Floor

M4

M3

M1

M2

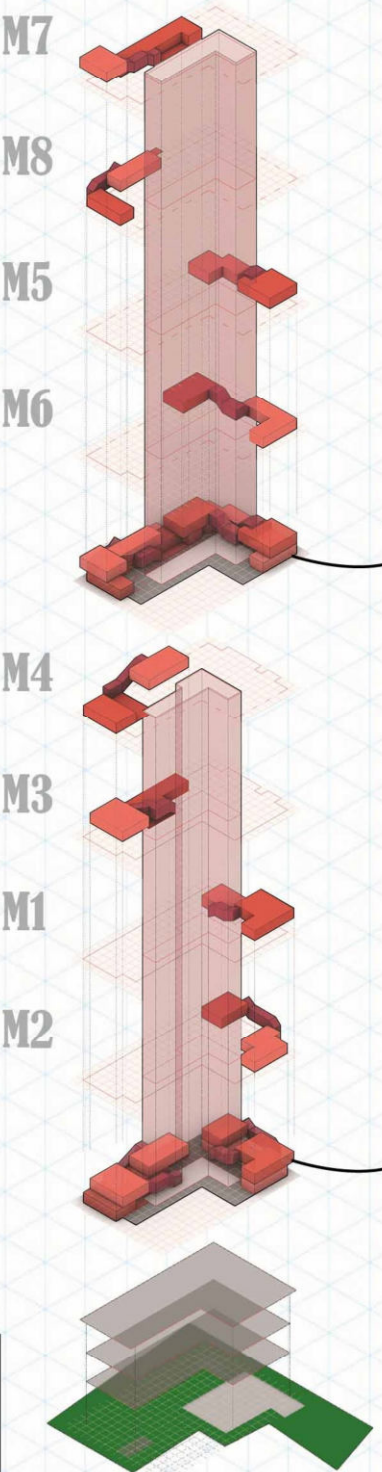
D.1

Modules On 4Th Floor And 5Th Floor

3rd Floor
REFLECT STAGE

1st and 2nd Floor
SET STAGE

G. Floor
PUBLIC



B

MODULE FORMATION AS PER THE NARRATIVE
(Dividing - Creating - Adding)

C

VERTICAL AND HORIZONTAL STACKING OF STAGES
(As Per The Site Requirement And Proximity Of Spaces in built form)

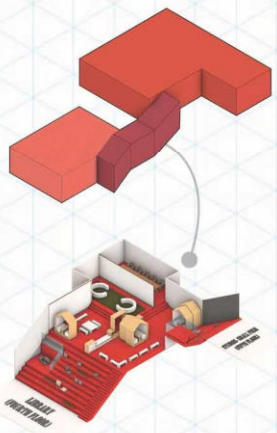
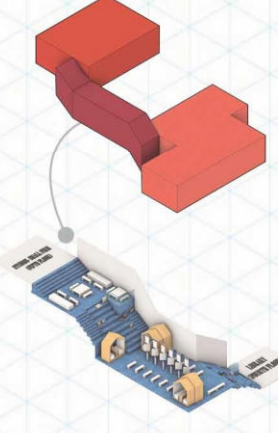
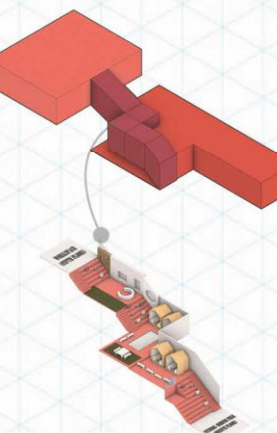
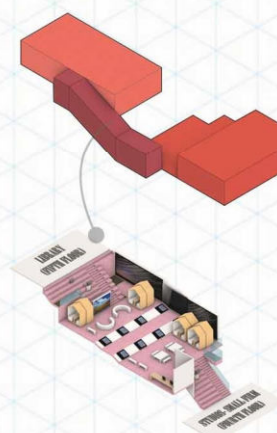
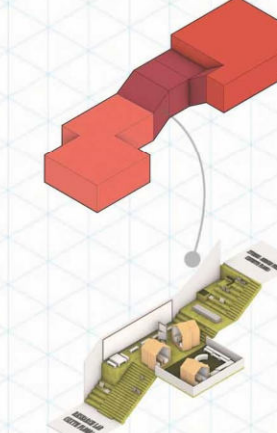
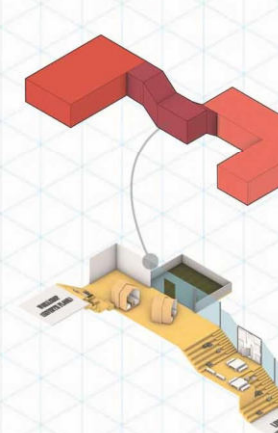
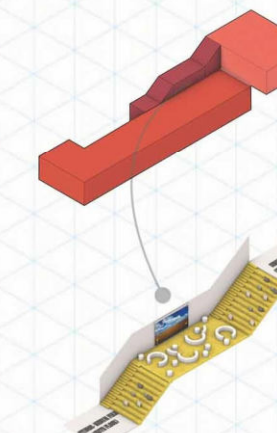
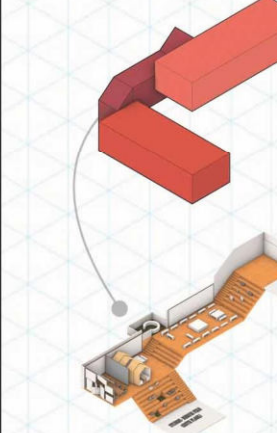
C
+
D

STACKING OF SPACES
(Modules Reshaped As Per The Needs Of The Space Assigned And The Placement On Site Grid)

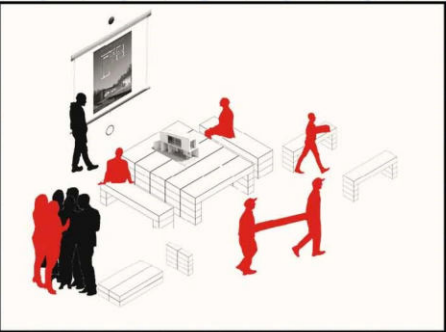
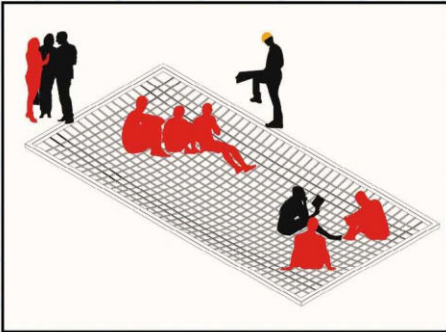

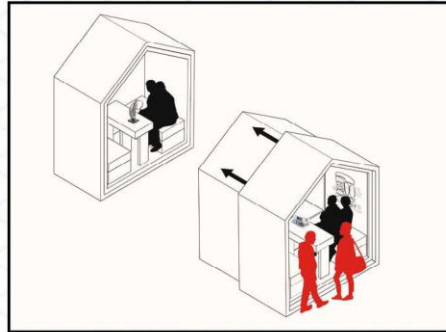
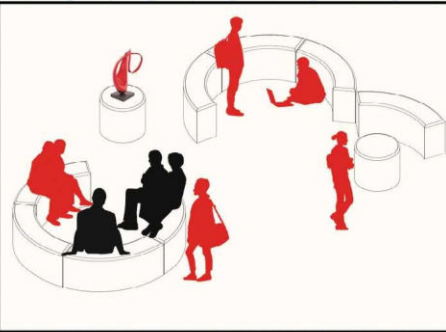
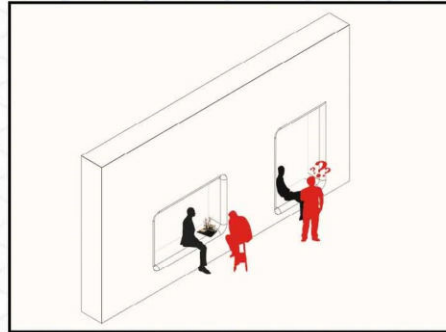
reshaping of modules / furniture used

CHANGING MODULE SHAPES; FURNITURE DESIGN

RESHAPING THE MODULES as per the need of the spaces and its position in the built form

							
M1 MODULE 1	M2 MODULE 2	M3 MODULE 3	M4 MODULE 4	M5 MODULE 5	M6 MODULE 6	M7 MODULE 7	M8 MODULE 8
Explicit Library (Literature, Design Philosophy) Implicit Studio Small Firm	Explicit Library (Art, History, Planning, Urban) Implicit Studio Small Firm	Explicit Workspace (60 students) Implicit Studio Medium Firm	Explicit LIBRARY (Digital Library) Implicit Studio Small Firm	Explicit Research Lab Implicit Studio Medium Firm	Explicit LIBRARY (Construction Section; Material lab) Implicit Construction Workshop Implicit Digital Design Lab	Explicit Seminar Hall Implicit Studios Medium Firm	Explicit Workspace for Freelancers Implicit Studios Medium Firm

FURNITURE USED IN REFLECT STAGE to augment communication and intimacy between professional and students

					
Planks And Blocks Seating Blocks can be kept on each other to increase the height, as per the user requirement	Net Hammocks Acts as a relaxation space where professionals and students can communicate and create a friendly association with each other	Rotatable white board panels Allowing professionals to easily review the Students and their work.	Expandable Discussion pods with inner white board surface Creates a semi-private space for open as well as private discussion	Co-Benches Centrally aligned benches to provoke users to invogorate higher intimacy	Voided Wall Panels Provides a Cozy and Personal space for the users and also as Discussion area for students and architects

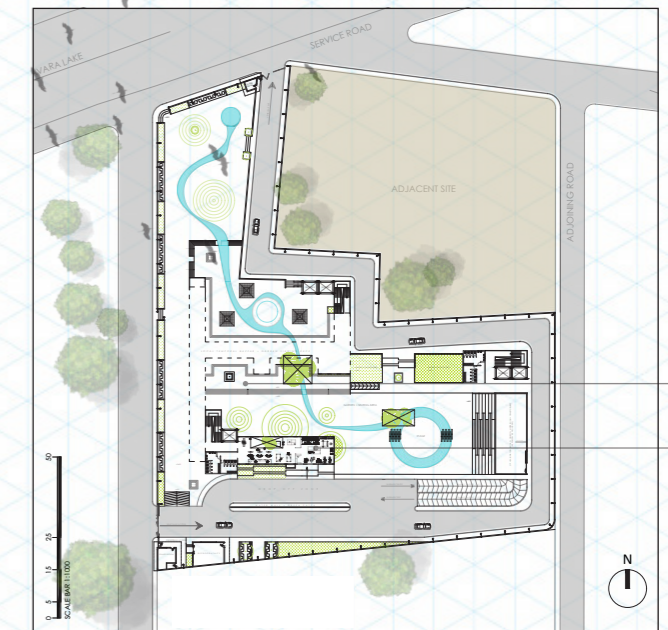


plans and circulation

FLOOR PLANS FROM BASEMENT TO THIRD FLOOR

PROGRAMS

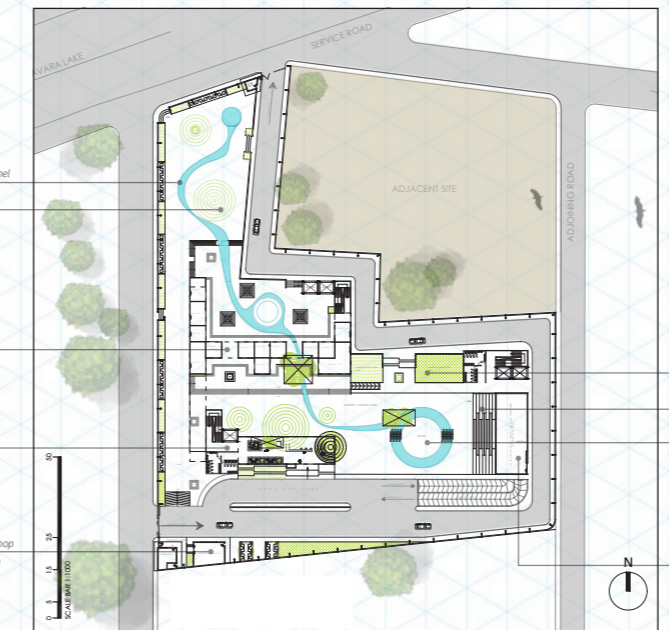
- Local Temporal Bazaar + Garden Viewing Deck
- Gymnasium and Relaxing Club



Lounge Mezz Floor Plan +6450

PROGRAMS

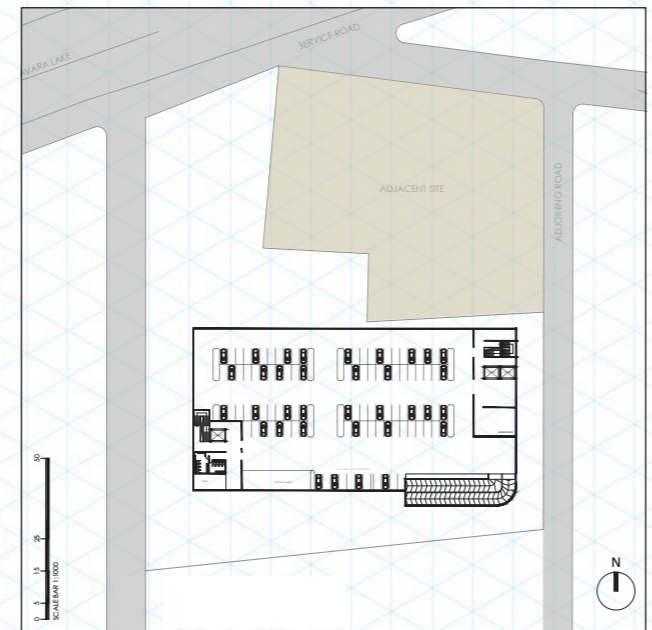
- Reception
- Waiting Lobby
- Open Garden
- Amphitheatre
- Water Channels
- Monthly Pavilion Area
- Bumps for an experiential Landscape
- Bazaar for Traditional Shops (13 Shops)
- Seating Area for Bazaar
- Stepped Seating Area
- Guard Room
- Stationary + Laser Cutting
- Area for STP, Biogas Treatment, and Transformer, Gensets



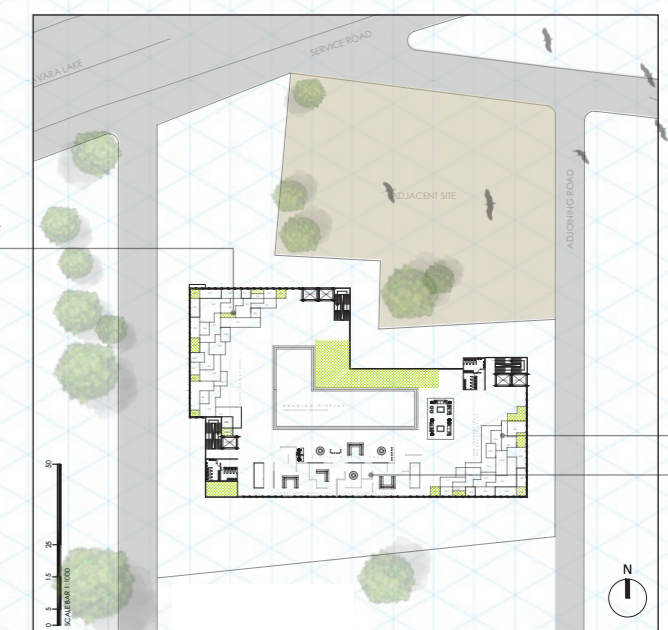
Ground Floor Plan +1500

PROGRAMS

- Parking
- 104 X 2 four wheeler Automated Multilevel
- Two wheeler Parking
- Storage
- Building Services



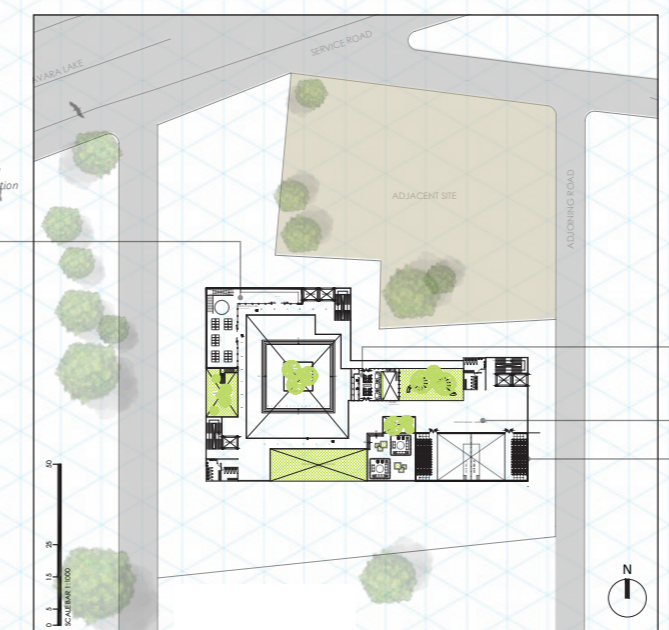
Basement Floor Plan



Third Floor Plan +18000

PROGRAMS

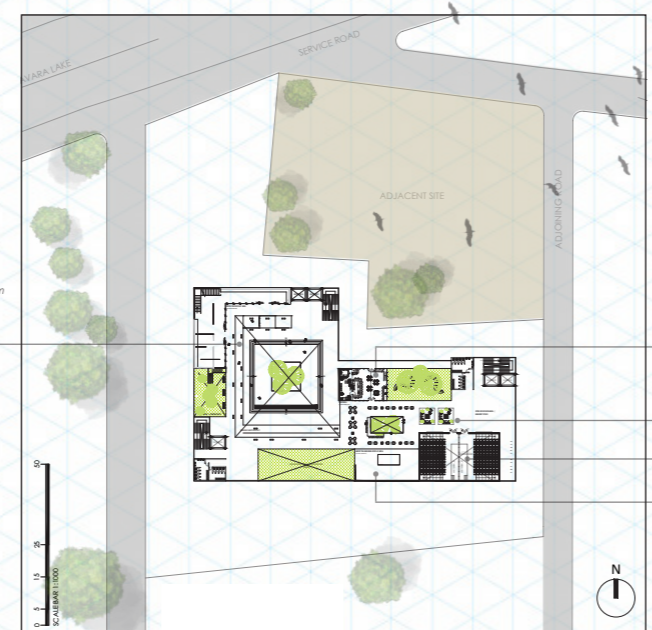
- Reflect Stage
- New Innovation Display Area
- Digital Display Area
- Art Display Area
- Model Display Area
- Hanging Display Area
- Feedback to the student's work can be given through respective QR codes on each display board.



Second Floor Plan +14700

PROGRAMS

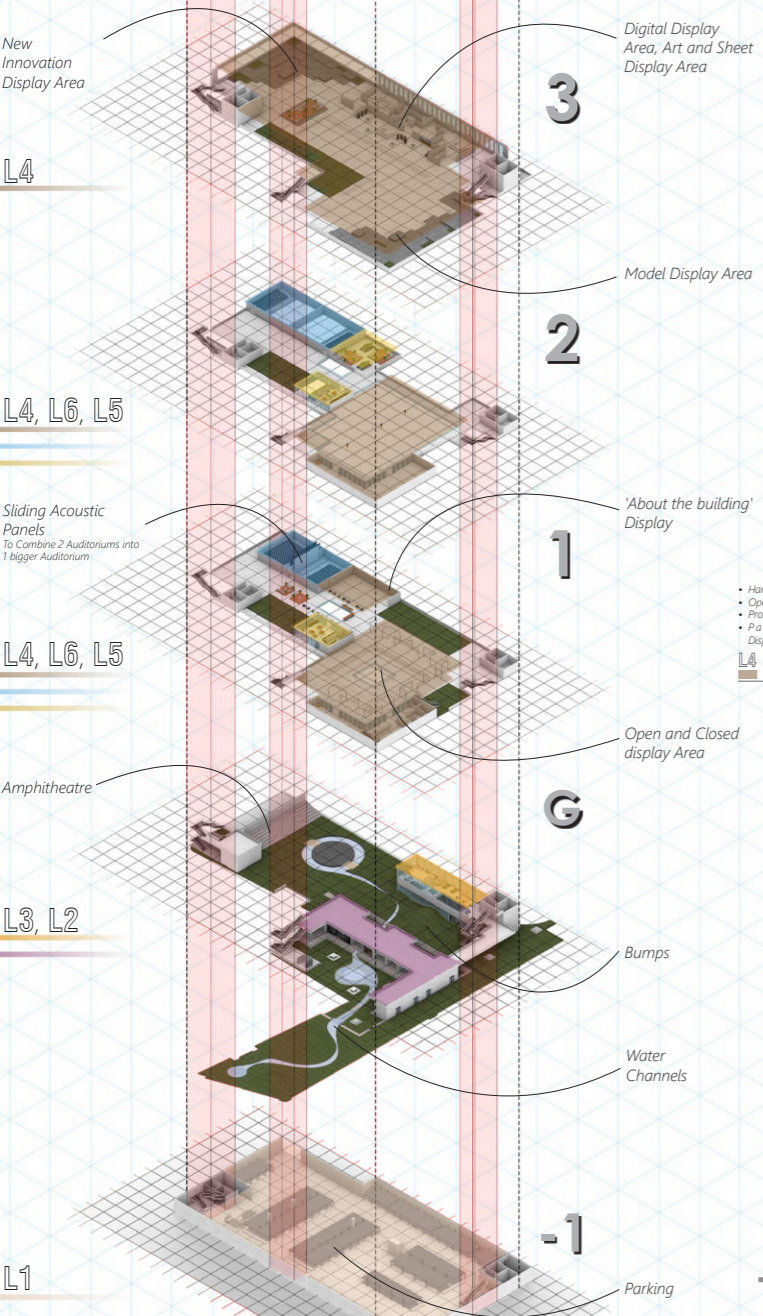
- Hanging Display Area
- Protected Display Area
- Open Seating Lounge
- 2 X Auditorium (Balcony Seating for 70 each)
- Cafeteria
- Self Service Counter
- Table for 4
- Sofa seating for 8
- Cold Storage



First Floor Plan +11400

PROGRAMS

- Hanging Display Area
- Open Display Area
- Protected Display Area
- Pavilion Display Area for Sheets
- 'About the Building' Display Area
- Open Discussion Area + Hangout Space
- 2 X Auditorium (Seating for 120 each)
- Cafeteria
- Self Service Counter
- Table for 4
- Working Station
- Billing Counter
- Kitchen with Cold Storage



ISOMETRIC EXPLODED 3D

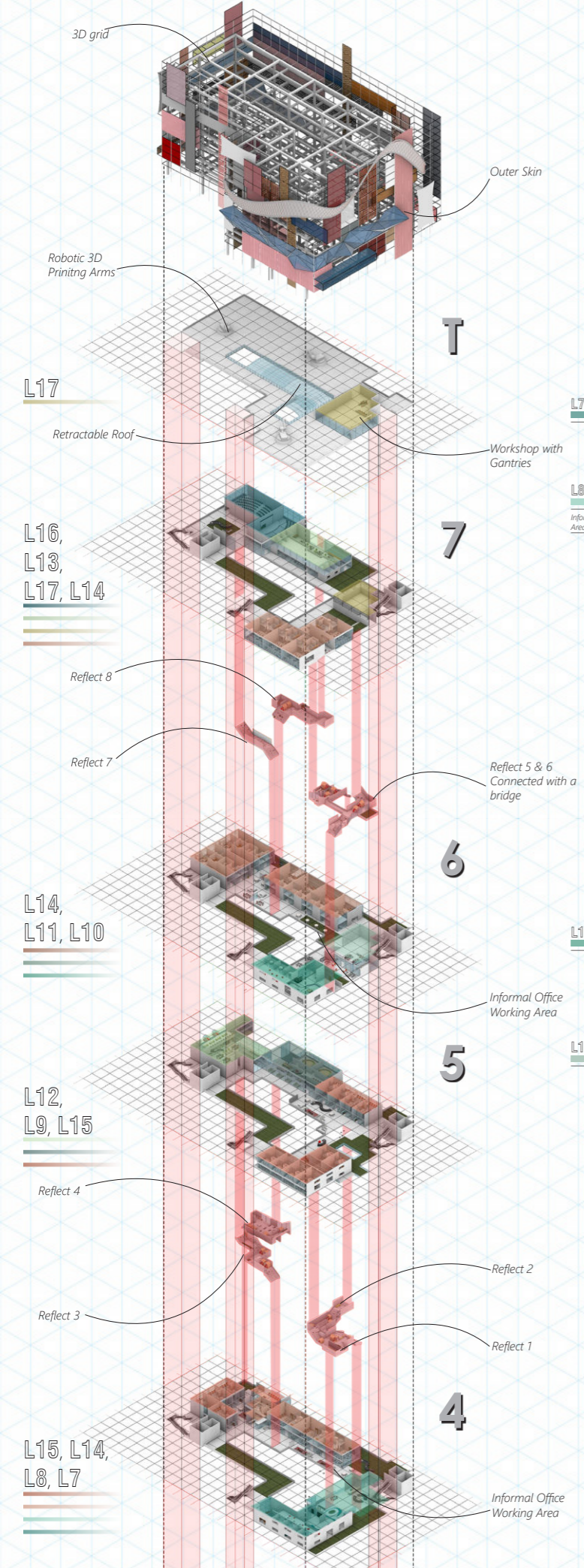
(ON 5 m X 5 m GRID)

Legends

CODE	PROGRAM	AREA	CODE	PROGRAM	AREA	CODE	PROGRAM	AREA	CODE	PROGRAM	AREA
L1	BASEMENT CAR PARKING	4000	L6	AUDITORIUM	2X250	L11	RESEARCH LAB	600	L16	SEMINAR HALL	2X250
L2	BAZAAR	500	L7	LIBRARY (Literature, Design Philosophy)	600	L12	WORKSPACE (60 students)	600	L17	WORKSHOP	200
L3	RECEPTION	500	L8	LIBRARY (Art, History, Planning, Urban Design)	600	L13	WORKSPACE (30 freelancers)	500	L18	REFLECT SPACE	
L4	DISPLAY AREA		L9	LIBRARY (Digital Library)	600	L14	STUDIOS MEDIUM FIRM	20X200	L19	CORE	
L5	CAFETERIA	800	L10	LIBRARY (Construction Section)	600	L15	STUDIOS SMALL FIRM	20X100			

plans and circulation

FLOOR PLANS FROM FOURTH TO SEVENTH FLOOR



- PROGRAMS**
- **Library (L7 + L8)**
 - Librarian Desk
 - Lockers
 - Reading Area
 - Ribbon Seating (To cater Multiple Purposes)
 - Mezzanine :
 - Reading Pods
 - Discussion Rooms
 - Book Shelves
 - **Open Library**
 - **4 X Medium Firm Studios**
 - (Same as 7th Floor)
 - **5 X Small Firm Studios**
 - (Same as 5th Floor)



Fourth Floor Plan +24600

- PROGRAMS**
- **Library (Construction Section)**
 - Mezzanine :
 - **Workspace for 60 Students**
 - Mezzanine
 - **10 X Small Firm Studios**
 - Mezzanine

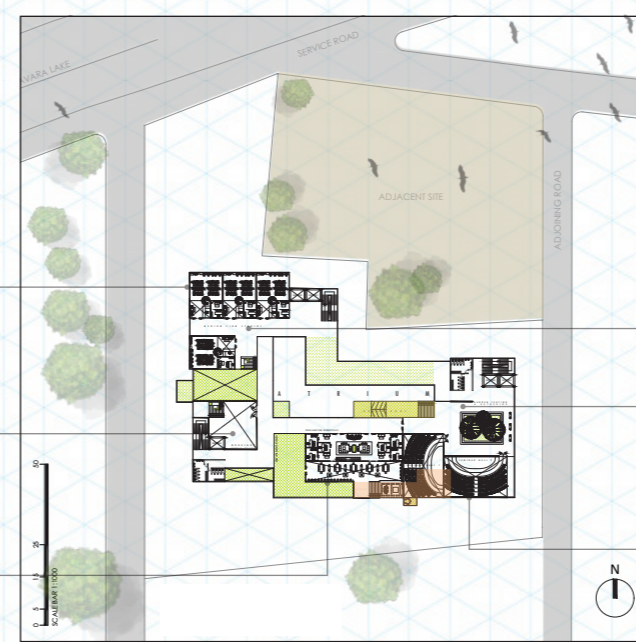


Fifth Floor Plan +31200



Sixth Floor Plan +37800

- PROGRAMS**
- **Library (Construction Section)**
 - (Same as 4th Floor)
 - **Research Lab**
 - Reception +Locker Area
 - White Board Discussion Area
 - Biological Research Lab
 - (soil testing area / application of bio in arch. related tests)
 - **Mechanical Research Lab**
 - (robotics / wind analysis / simulation tests)
 - **Medium Firm Studios**
 - (Same as 7th Floor)



Seventh Floor Plan +44400

- PROGRAMS**
- **4 X Medium Firm Studios**
 - Mezzanine :
 - **Workspace for Free Lancers**
 - Mezzanine :
 - **Workshop (Double Height)**
 - **2 X Seminar Hall**

DETAILED PROGRAMS

- **Library (Construction Section)**
 - Open Computer Lab with easily accessible Softwares
 - (Same as 4th Floor)
 - Mezzanine :
 - 2 X Digital Learning Classes (30 students Each)
- **Workspace for 60 Students**
 - Individual Working Desks
 - Working area
 - Relaxation Zone (Low Height Cushioned Seating) + Mini Library
 - Cafeteria
 - Lounge Area
 - Discussion Pods
 - Mezzanine
 - Open Computer Lab
 - Presentation Area
 - White Board Tables
 - Discussion Pods
- **10 X Small Firm Studios**
 - Reception + Waiting
 - Presentation Area
 - Discussion Table
 - Architect's Cabin
 - Mezzanine
 - Working Area for 3
 - Storage
 - Pantry

DETAILED PROGRAMS

- **4 X Medium Firm Studios**
 - Reception
 - Waiting Area
 - Formal Working Area
 - Architect's Cabin
 - Mezzanine :
 - Pantry and Hanging Out space
 - Storage
 - Presentation Area
- **Workspace for Free Lancers**
 - Reception
 - Waiting Area
 - Lounge
 - Meeting Cabinets
 - Formal Working Area (Private & Semi private)
 - Mezzanine :
 - Presentation Area
 - Formal Working Area
- **Workshop (Double Height)**
- **2 X Seminar Hall (150 + 6 HandiCapped Seats Each)**



ROOF AS RESEARCH HUB

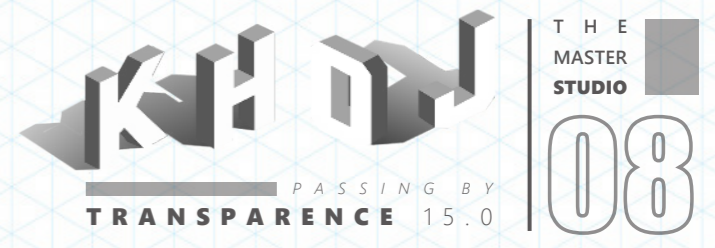
Terrace Floor

- PROGRAMS**
- Research Lab (Laboratory)
 - Storage (Mechanical and Biological)
 - 2 Gantries with 3d printing technology
 - Indoor workspace
 - Outdoor workspace

Legends

CODE	PROGRAM	AREA	CODE	PROGRAM	AREA	CODE	PROGRAM	AREA	CODE	PROGRAM	AREA
L1	BASEMENT	4000	L6	AUDITORIUM	2X250	L11	RESEARCH LAB	600	L16	SEMINAR HALL	2X250
L2	BAZAAR	500	L7	LIBRARY (Literature, Design Philosophy)	600	L12	WORKSPACE (60 students)	600	L17	WORKSHOP	200
L3	RECEPTION	500	L8	LIBRARY (Art, History, Planning, Urban Design)	600	L13	WORKSPACE (30 free-lancers)	500	L18	REFLECT SPACE	
L4	DISPLAY AREA	-	L9	LIBRARY (Digital Library)	600	L14	STUDIOS MEDIUM FIRM	20X200	L19	CORE	
L5	CAFETERIA	800	L10	LIBRARY (Construction Section)	600	L15	STUDIOS SMALL FIRM	20X100			

ISOMETRIC EXPLODED 3D
(ON 5 m X 5 m GRID)



isometric view

ABOUT THE FACADE; SOME SITE DETAILS

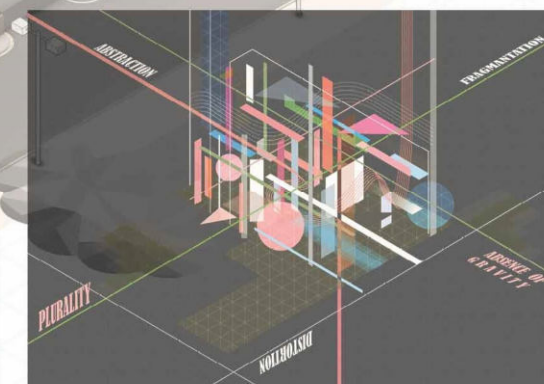
ABSTRACTION | DISTORTION | FRAGMENTATION |
ABSENCE OF GRAVITY | PLURALITY | A LEARNING TOOL

Bangalore's architecture today functions around the modernist ideas of creating free-standing and mono-functional buildings. Amid those structures, this facade creates a plurality and convergence of shapes, lines, textures and colours that recreate, in 3D space, a dynamic continuum.

The facade acts as a living cloak that distinguishes itself as an unforgettable visual contrast, against a typically urban backdrop of concrete, steel and glass.

The facade also acts as a learning tool with the juxtaposition of different materials over it. It also expresses the close relation of architecture with the applied art and the need for it in the context of modernist structures in the city with restricted expression of feeling and life.

The facade was developed from the diagram made on site (shown below), description of which can be read in the 'Site Conceptualization' Section.



PROFESSIONALS
STUDENTS

1



I just came here for working as a free-lancer but many studios here are my inspiration now and I can make money while working with them



Sir would you like to engage with me in my project So that I can work in a right direction... Working model is inside the workshop I can show you



2

This book will help you with the execution... Still my office is directly connected to this library through the reflect space, you may visit for help anytime.



3



Why informal areas are important to the project narrative?

The common space formed by the interconnected terraces offers an alternative to the formal office space in the solid part of the building, allowing for an unprecedented expansion of the vocabulary of workspaces: a space that can absorb all the question marks of the future architects.

I come everyday here to review the students' works, where I learn from them too with lots of explorations

Working and learning are two different things, but the question is, how do I apply those learnings into the practical work?

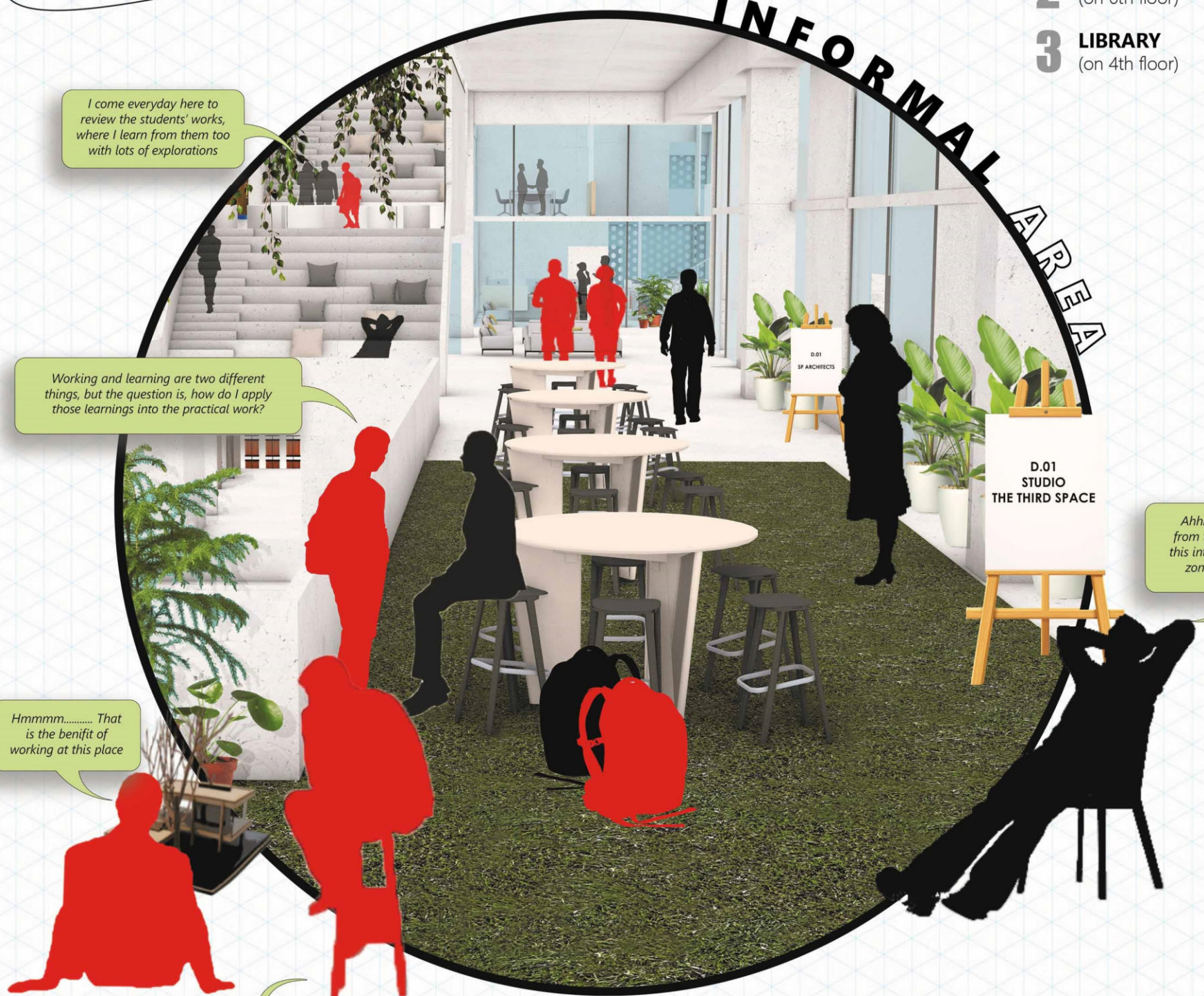
Hmmmm..... That is the benefit of working at this place

I think we should discuss this in detail with one of these professionals,.... what's your view

renders
INFORMAL AREA; WORKSPACES; WORKSHOPS; LIBRARY

- 1 **WORKSPACE**
(on 5th floor)
- 2 **WORKSHOP**
(on 6th floor)
- 3 **LIBRARY**
(on 4th floor)

INFORMAL AREA



Ahhh.... lot to learn from these students in this interactive informal zone of the studio

PROFESSIONALS
STUDENTS

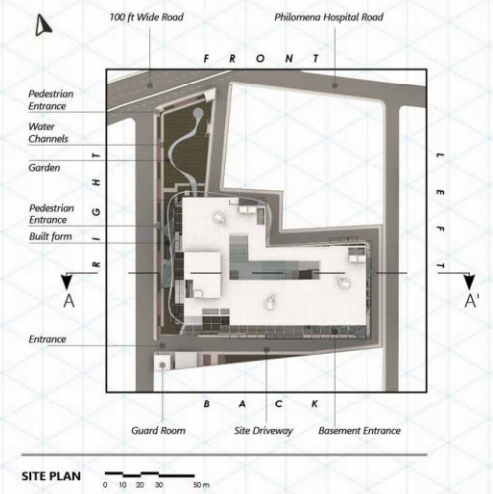
KNO
PASSING BY
TRANSPARENCY 15.0

THE MASTER STUDIO
10

sectional perspective

SECTION THROUGH COURTYARD WITH FOCUS ON REFLECT STAGES

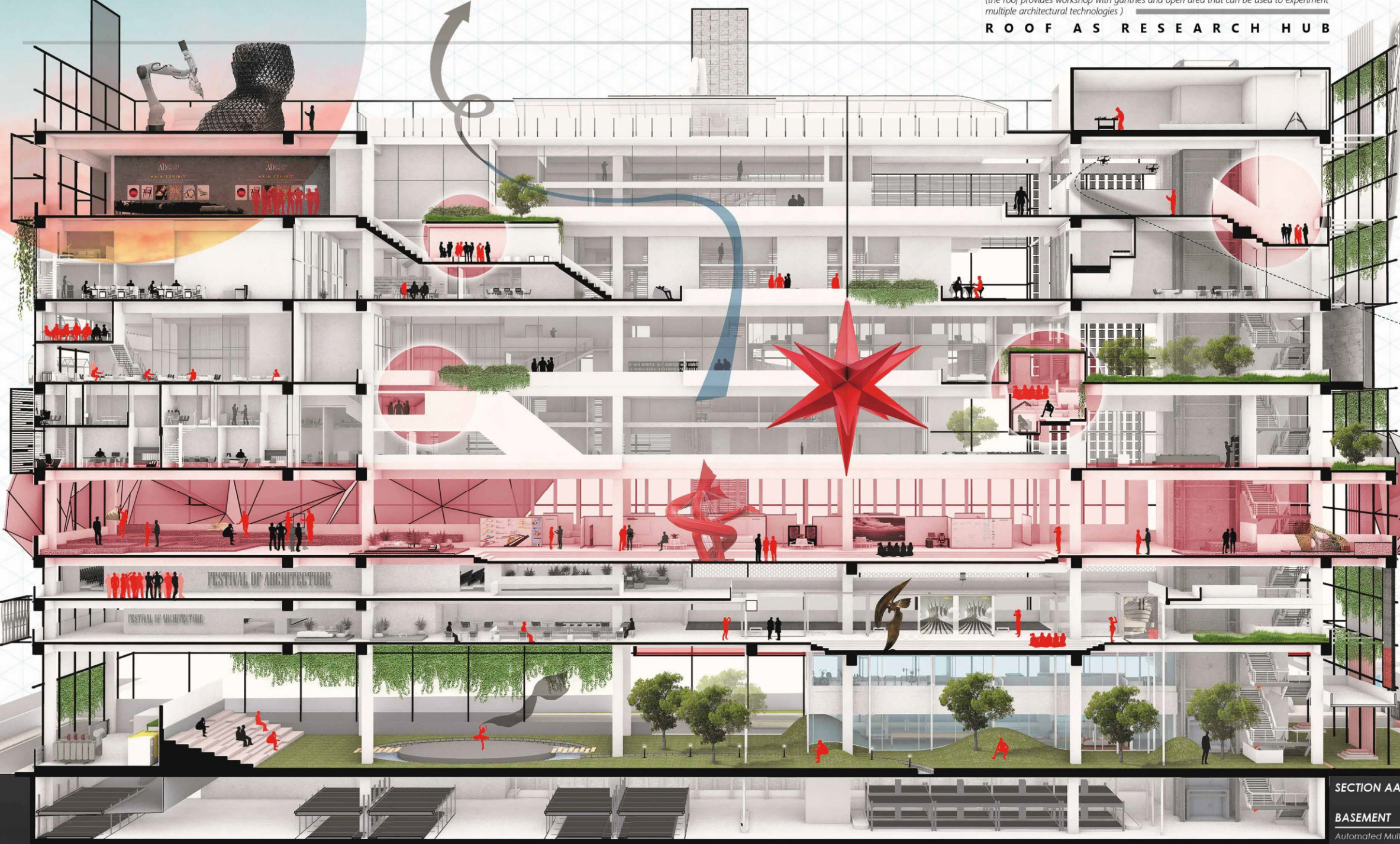
PROFESSIONALS
STUDENTS



(venturi effect, Courtyard effect, Green buffer on the side exposed to prevailing wind directions, Facade reduces the heat transfer by increasing surface area, many others)
PASSIVE COOLING STRATEGIES

(the roof provides workshop with gantries and open area that can be used to experiment multiple architectural technologies)
ROOF AS RESEARCH HUB

(Explicit and Implicit spaces are interlocked with each other as discussed in sheet 5)
EXPLICIT & IMPLICIT
(all red marked spaces)
REFLECT
(initial stage)
SET
(accessible to all)
PUBLIC



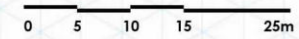
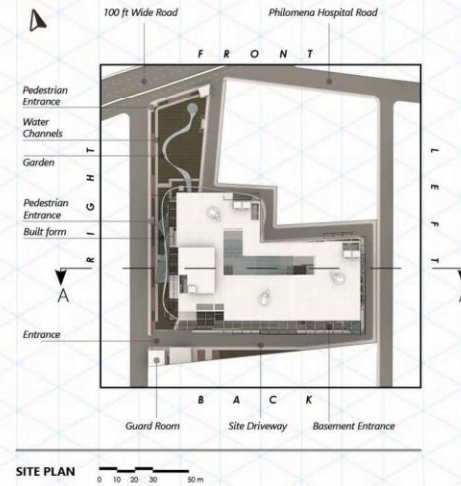
Feedback to the student's work can be given through respective QR codes on each display board.

SECTION AA'

BASEMENT
Automated Multilevel Parking

elevation & material palette

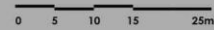
ALL ELEVATIONS; MATERIAL PALLETTE FOR FACADE



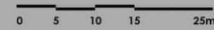
FRONT ELEVATION



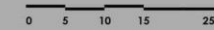
LEFT ELEVATION



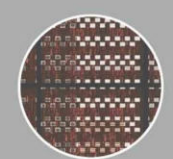
RIGHT ELEVATION



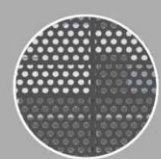
BACK ELEVATION



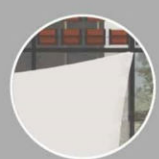
MATERIAL PALLETTE for the facade that acts as a learning tool for students



Perforated bricks



Perforated steel panels



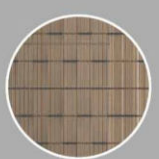
Tensile Sheet



Rotatable Mangalore Tiles



Glass and Tessellation



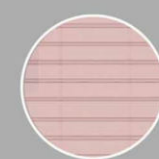
Swirling Bamboo



Teak Timber



Corrugated Aluminium Sheet



Corrugated translucent sheet



Running black steel members



PASSING BY
TRANSPARENCY 15.0

THE MASTER
STUDIO
12

area program and bye - laws

AREA CALCULATION OF EACH SPACE; DIVISION OF FLOORS INTO SET, IMPLICIT, EXPLICIT, REFLECT STAGES; FLOOR AREAS; BASIC BYE-LAWS CONSIDERATION

S.No.	Spaces	No. of units	Area/unit	Total Area	Cumulative Area
1	Common Area				
	Entrance + Reception	1	50	50	300
	Waiting Area	1	100	100	
	Vestibule	1	50	50	
	Assembly Room	1	100	100	
	TOTAL			300	
2	Studio (Small Firm)				
	Architects Cabin	20	10	200	2000
	Staff Work Area	20	50	1000	
	Presentation Area	20	15	300	
	Reception	20	7.5	150	
	Waiting Area	20	7.5	150	
	Pantry	20	10	200	
	Toilet	0	0	0	
	TOTAL			2000	
3	Studio (Medium Firm)				
	Architects Cabin	20	20	400	4000
	Staff Work Area	20	100	2000	
	Presentation Area	20	30	600	
	Reception	20	15	300	
	Waiting Area	20	15	300	
	Pantry	20	20	400	
	Toilet	0	0	0	
	TOTAL			4000	
4	Cafeteria (only for firms & students)				
	Seating (500 Seating Capacity 1*1.2)	1	600	600	810
	Kitchen	1	120	120	
	Store	1	90	90	
	TOTAL			810	
5	Working Space (for 60 Students)				
	Individual Workstation	45	5	225	625
	Model Making (Double Height)	2	100	200	
	Working Hall/ Studio	2	60	120	
	Meeting Cubicles	10	8	80	
	TOTAL			425	
6	Working Space (for 30 Free Lancing Architects)				
	Individual Workstation	30	7	210	515
	Informal Working Area	3	75	225	
	Meeting Cubicles	10	8	80	
	TOTAL			515	
7	Library				
	Digital	1	300	300	600
	Conventional	1	300	300	
	TOTAL			600	
8	Material Lab	1	250	250	250
	TOTAL			250	
9	Stationary & Reprographic	1	150	150	150
	TOTAL			150	
10	Indoor Games Zone	5	40	200	200
	TOTAL			200	
11	2 Seminar Halls (150 People)	2	200	400	400
	TOTAL			400	
12	Collaboration hub Competition gallery (as a part of circulation)	1	250	250	250
	TOTAL			250	
13	Outdoor Areas				
	Garden	NA	NA	NA	2080
	Amphitheater	3	200	600	
	School With No Walls	2	80	160	
	Open Air Theatre	1	200	200	
	Breakout Spaces	1	500	500	
	Garden Pods	10	12	120	
	Food Court/Landscape	1	300	300	
	Coffee shop	2	100	200	
	TOTAL			2080	
14	Services				
	Toilet (Male+Female)	7	100	700	8030
	Stairwell	14	20	280	
	Lifts cores	7	10	70	
	Service Cores	7	50	350	
	Attium	5	1200	6000	
	Digital Design Lab	1	250	250	
	Art Gallery	1	400	400	
	TOTAL			8030	

FUNCTION WISE AREAS with areas per unit as well as cumulative areas

FLOOR WISE AREAS with open/green areas and cutouts mentioned

S. NO.	FLOORS	ABOUT	TOTAL FLOOR AREA (in Sq. M.)		OPEN/GREEN AREA (at each floor) (in Sq. M.)	CUTOUTS (in Sq. M.)
0	GROUND FLOOR	Public Area	2330	-	9994	-
1	FIRST FLOOR	Set Stage	4660	includes	640	excludes
2	SECOND FLOOR	Set Stage	2800	includes	200	excludes
3	THIRD FLOOR	Reflect Stage	5400	includes	370	excludes
4	FOURTH FLOOR	Explicit and Implicit	4200	includes	690	excludes
5	FIFTH FLOOR	Explicit and Implicit	3950	includes	880	excludes
6	SIXTH FLOOR	Explicit and Implicit	4950	includes	905	excludes
7	SEVENTH FLOOR	Explicit and Implicit	3000	includes	960	excludes
8	TERRACE	Explicit and Implicit	5340	includes	1050	excludes
			36630		15689	

FLOOR-AREA RATIO 3 **TOTAL BUILT-UP AREA 36630 SQM** **TOTAL GREEN AREA 15689 SQM**

BANGALORE

Site Area - 12324 Sq mts	
Max Ground Coverage Allowed - 60% of total site area = 7394.4 Sq mts	
Ground Coverage Taken - 45% of total site area = 5545 Sq mts	
Set Back - 10 Mts from all sides	
No of floors Permitted for 30 m road width - G+8	
Basement - 4.5 Mts Below Ground	
FAR Allowed - 2-4 for Commercial Projects	
FAR Taken - 3	
FIRE STAIRCASES and MEANS of ACCESS	
Staircase riser	150 mm
Staircase tread	300 mm
Staircase width	1900 mm
Staircase material	Stainless Steel with Perforations at each tread
Maximum travel Distance	28 m
Fire Tender Movement	6 m (on all sides)
Disable Access in Public spaces Mandatory according to Bangalore bylaws	
Provision of Disabled ramps at entries and exits	
Ramp Slope Ratio	01:08
Provision of open plans at G+3 levels for Emergency situations like COVID Pandemics	

BASIC BYELAWS FOLLOWED as per mentioned by bangalore development authority

TOD Zones: Decided by proximity to transit corridor

INTENSE ZONE	STANDARD ZONE	TRANSITION ZONE
(500 m on either side of transit corridor)	(500 m to 1000 m on either side)	(1000 m to 2000 m on either side)

New FAR for vertical growth

Plot Size (sqm)	Road Width	Existing#	Permissible FSI*	
			Intense	Standard
RESIDENTIAL				
Up to 360	Up to 12m	1.75	2.00	2.00
360-1,000	12-18m	2.25	3.00	3.00
1,000-2,000	18-24m	2.50	4.00	3.25
2,000-4,000	24-30m	3.00	4.50	3.75
4,000-20,000	Above 30m	3.25	5.00	4.25
Commercial (Business)				
Upto 12,000	Less than 9m	1.50	2.00	2.00
	9-12m	1.75	2.50	2.50
	12-18m	2.25	3.00	3.00
	18-24m	2.50	4.00	3.50
	24-30m	3.00	4.50	4.00
	Above 30m	3.25	5.00	4.25

*As per TOD Policy #Permissible FSI

S. NO.	SPACES	ABOUT	AREA OF MAIN SPACE	AREA OF SECONDARY SPACE	TOTAL AREA	FLOOR	NOTE	
EXPLICIT								
1	Library - Construction Section (200), material lab (200)	WORKING STATIONS AND DISCUSSION PODS AT EVERY FLOOR	450 SQ. M.	+ 150 SQ.M	600 SQ. M.	6	SECONDARY SPACE is used as MEZZ.	
2	Library - Design and Philosophy related, architecture literature, and about architects		450 SQ. M.	+ 150 SQ.M	600 SQ. M.	4	SECONDARY SPACE is used as MEZZ.	
3	Library - Planning and Urban Design, art based section and History		450 SQ. M.	+ 150 SQ.M	600 SQ. M.	4	SECONDARY SPACE is used as MEZZ.	
4	Digital Library (500) and Digital Learning Centre (200)		450 SQ. M.	+ 150 SQ.M	600 SQ. M.	5	SECONDARY SPACE is used as MEZZ.	
5	Workspace for Free lancers		Library (As per the Working Firms' Designs) And small display	400 SQ. M.	+ 100 SQ. M. (on floor above)	510 SQ. M.	5	SECONDARY SPACE is used as MEZZ.
6	Collaborative Workspace for students and architects working with each other and sharing knowledge, dedicated areas for Discussions and Presentations		Library (As per the Working Firms' Designs) And small display	450 SQ. M.	+ 150 SQ. M. (on floor above)	610 SQ. M.	6	SECONDARY SPACE is used as MEZZ.
7	2 Seminar Halls		-	250 X 2 SQ. M.	DOUBLE HEIGHT	500 SQ. M.	7	SECONDARY SPACE is used as MEZZ.
8	Workspace for 60 students		Library (As per the Working Firms' Designs) And small display	450 SQ. M.	+ 150 SQ. M. (on floor above)	610 SQ. M.	7	SECONDARY SPACE is used as MEZZ.
IMPLICIT								
1	Construction Workshop and DIGITAL DESIGN LAB (200)		200 SQ. M.	-	200 SQ. M.	7		
2	Small Firm Studios (5-10 people)		100 X 5 SQ. M.	+ Informal 100 SQ. M.	600 SQ. M.	5	Includes MEZZ IN EACH OFFICE (50 SQ. M.)	
3	Small Firm Studios (5-10 people)		100 X 5 SQ. M.	+ Informal 100 SQ. M.	600 SQ. M.	5	Includes MEZZ IN EACH OFFICE (50 SQ. M.)	
4	Small Firm Studios (5-10 people)		100 X 5 SQ. M.	+ Informal 100 SQ. M.	600 SQ. M.	4	Includes MEZZ IN EACH OFFICE (50 SQ. M.)	
5	Medium Firm Studios (10-20 people)		200 X 4.5 SQ. M.	+ Informal 200 SQ. M.	1000 SQ. M.	4	Includes MEZZ IN EACH OFFICE (50 SQ. M.)	
6	Medium Firm Studios (10-20 people)		200 X 4.5 SQ. M.	+ Informal 200 SQ. M.	1000 SQ. M.	7	Includes MEZZ IN EACH OFFICE (50 SQ. M.)	
7	Medium Firm Studios (10-20 people)		200 X 4.5 SQ. M.	+ Informal 200 SQ. M.	1000 SQ. M.	6	Includes MEZZ IN EACH OFFICE (50 SQ. M.)	
8	Medium Firm Studios (10-20 people)		200 X 4.5 SQ. M.	+ Informal 200 SQ. M.	1000 SQ. M.	6	Includes MEZZ IN EACH OFFICE (50 SQ. M.)	
	FORMAL Closed Space Private spaces Closed Space Entry permitted according to the Office Employees	INFORMAL Semi-Private Space Open + Semi open spaces Entry allowed to the public Facing the attium						
9	Terrace floor							
	Whole floor dedicated to Research activity centre	Research Lab (Laboratory)	(provided one floor below)	-	5340 SQ. M.			
		Storage (Mechanical and Biological)						
		2 Gantries with 3d printing technology	429 SQ. M.					
		Indoor workspace						
		Outdoor workspace	(open Terrace)					

EXPLICIT AND IMPLICIT SPACES their area calculation and floor wise placement

