



STU

SLOVAK UNIVERSITY OF  
TECHNOLOGY IN BRATISLAVA

# STU INNOVATION CENTER

Instructors :

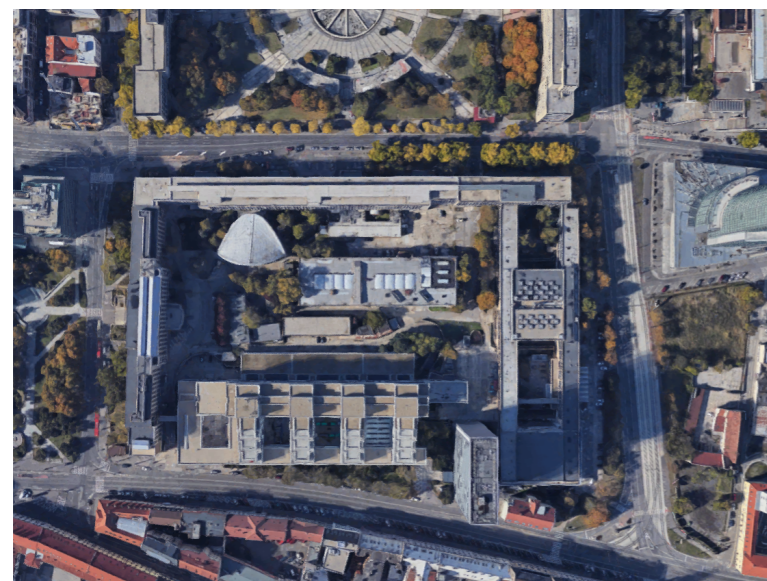
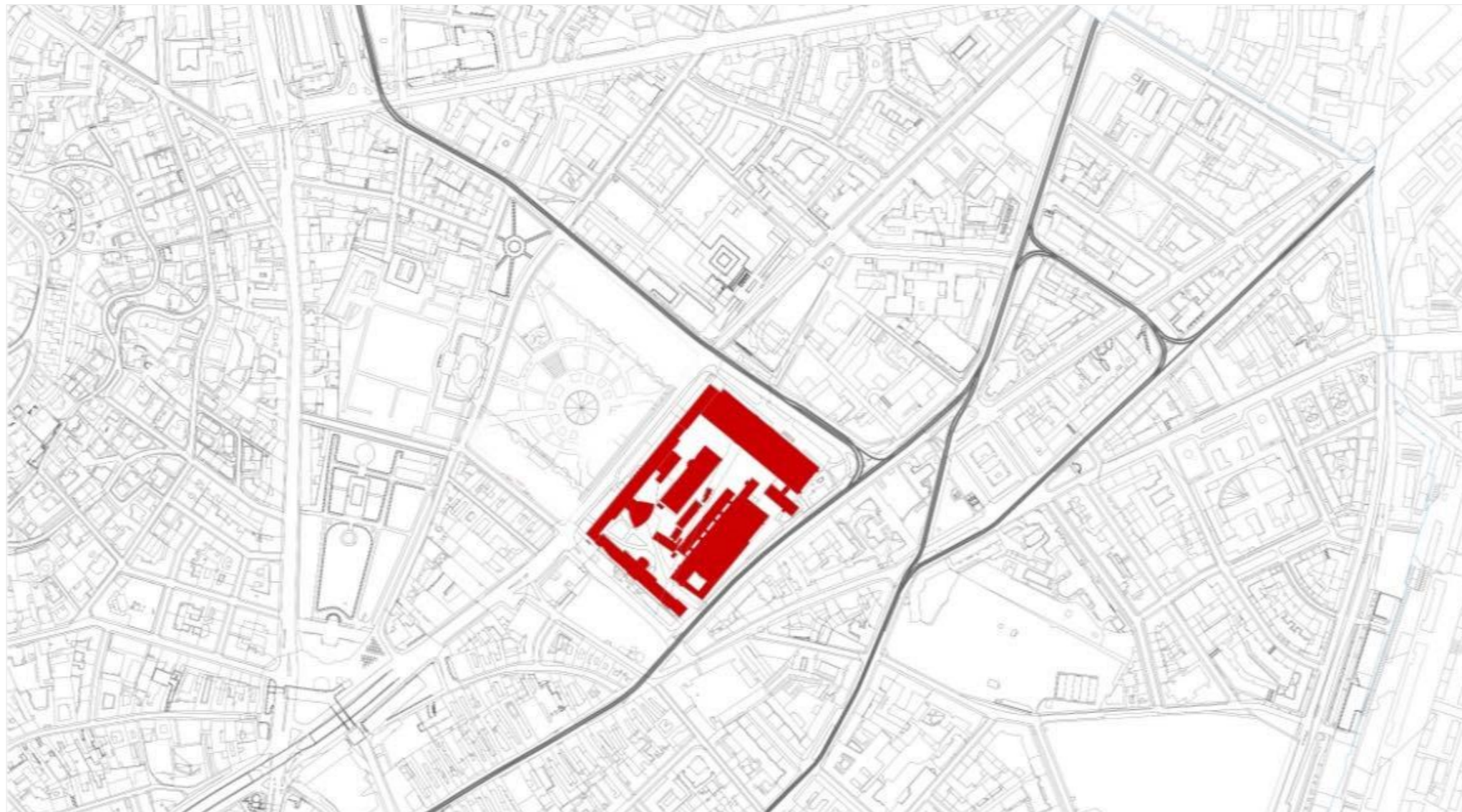
Prof. Violeta Bakalcev

Prof. Toni Vasic

MA. Nina Karangeleska Todorovska

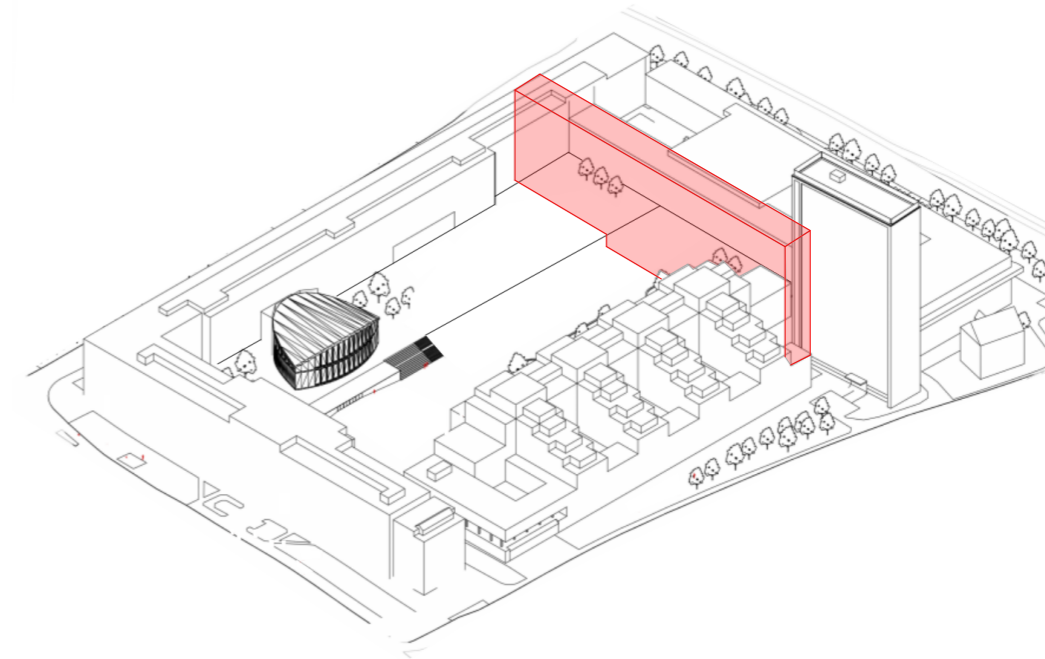
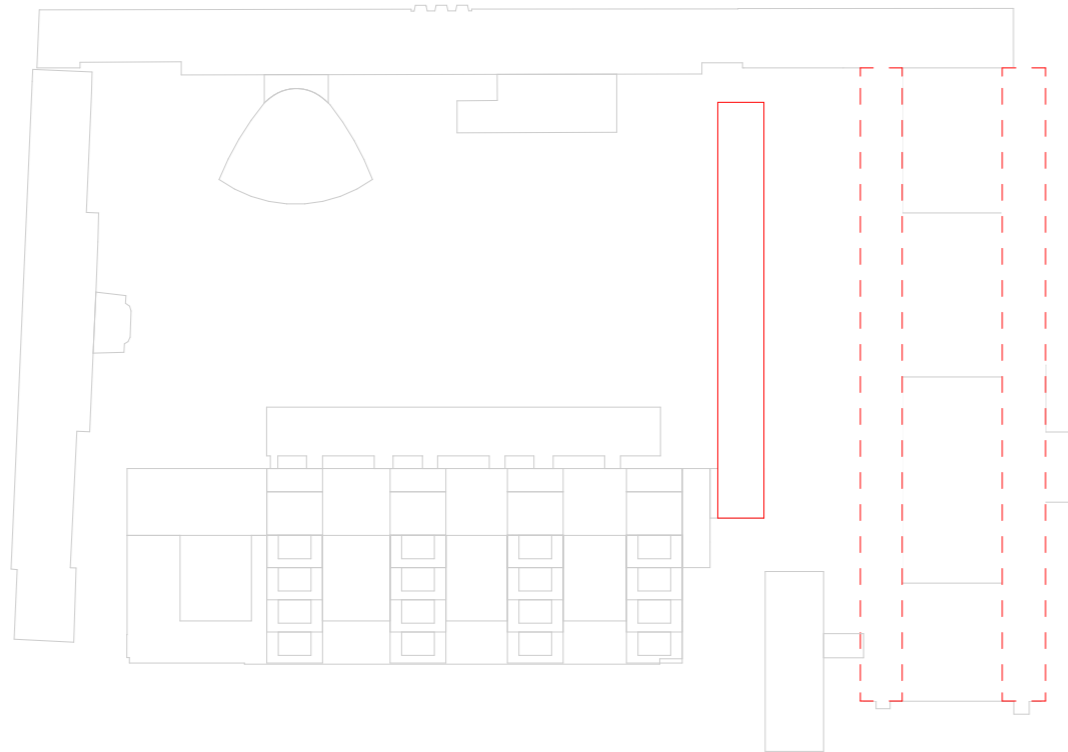
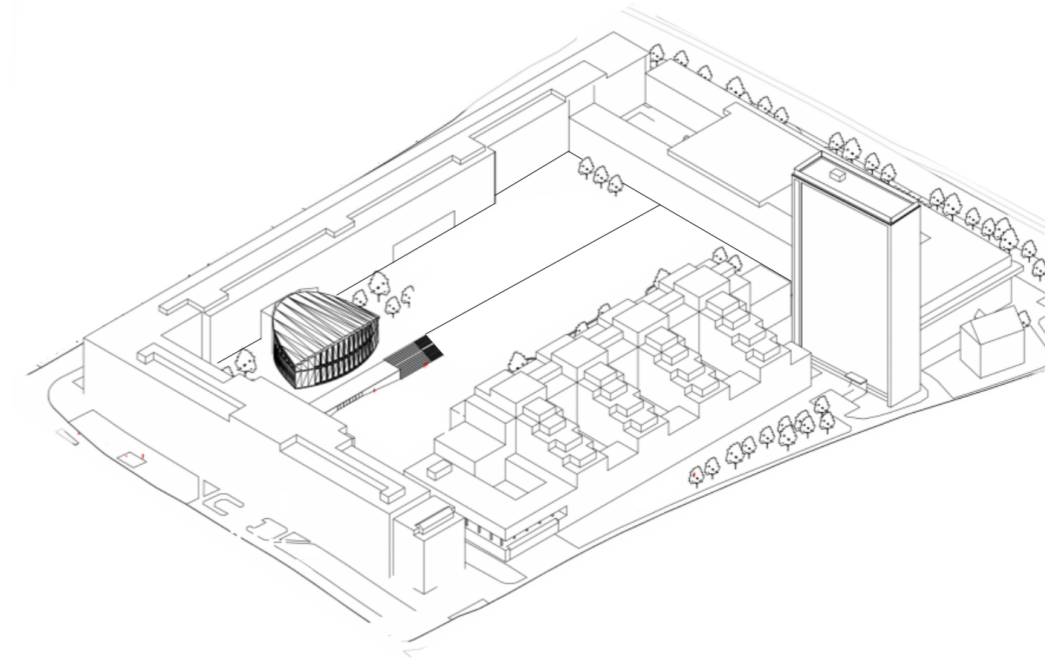
Student :

Besarta Xhaferi

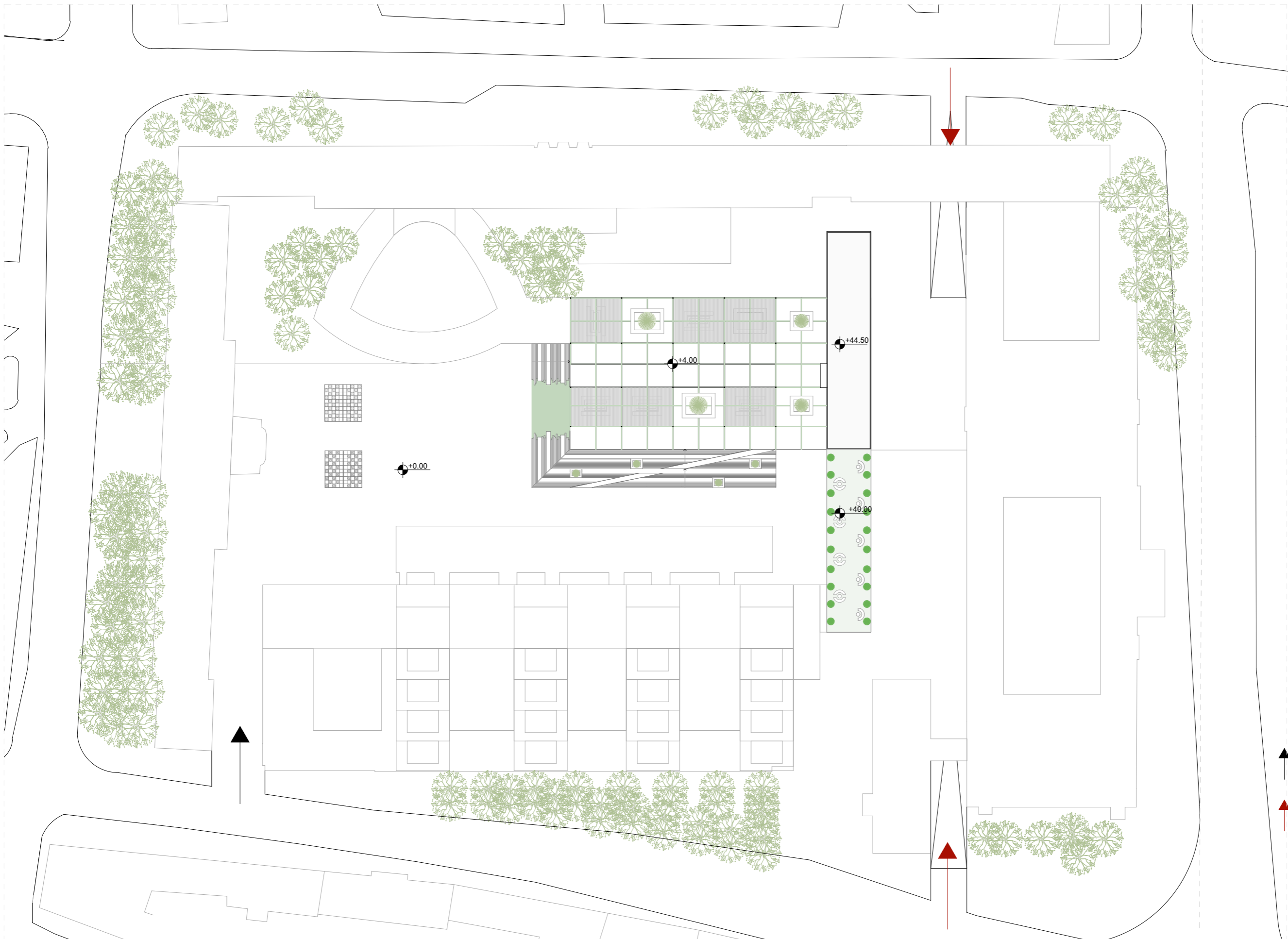


According to the current state the idea from the beginning was to transform the campus courtyard. The yard will be the center, a space used by all students from different faculties as well as the professor, the employees. So I want to move all the heavy laboratories, and to continue with the idea that the new concept will be developed to leave as much as we can yard and green space and of course better circulation .

## THE PROJECT IDEA

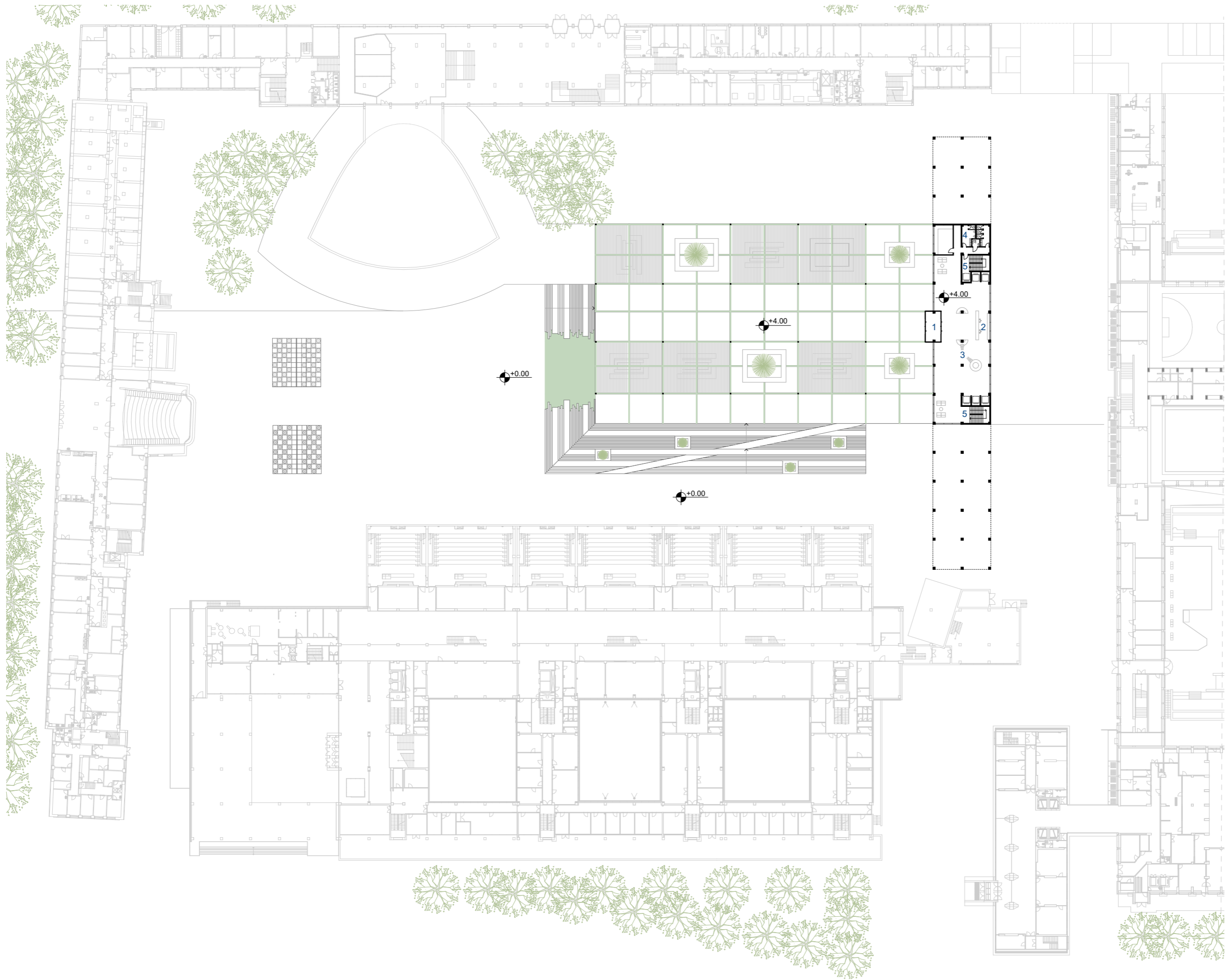


After removing the temporary objects and the heavy laboratory we have a new challenge, where to place the new form.  
After several attempts we decide the new form to have something from the architecture that we already have in this situation.  
So the new proposal will be to add one more rectangle in the North -West site, with the same distance but different heights.  
In this way the courtyard open spaces are opportunities to create flexible spaces for recreation and activity.



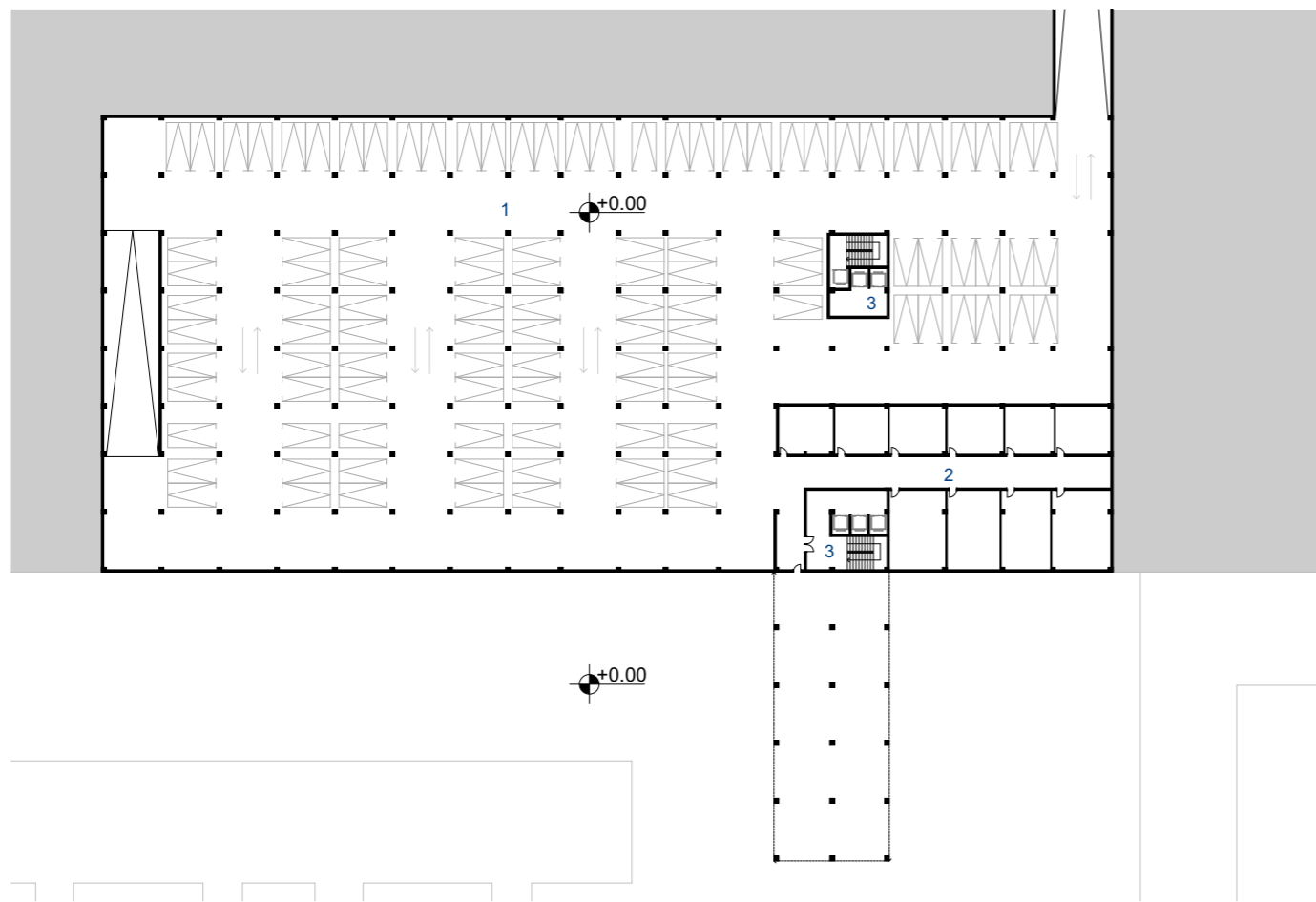
↑ Enterace for people  
 ↑ Enterace for auto

Site plan  
 Esc 1:1000

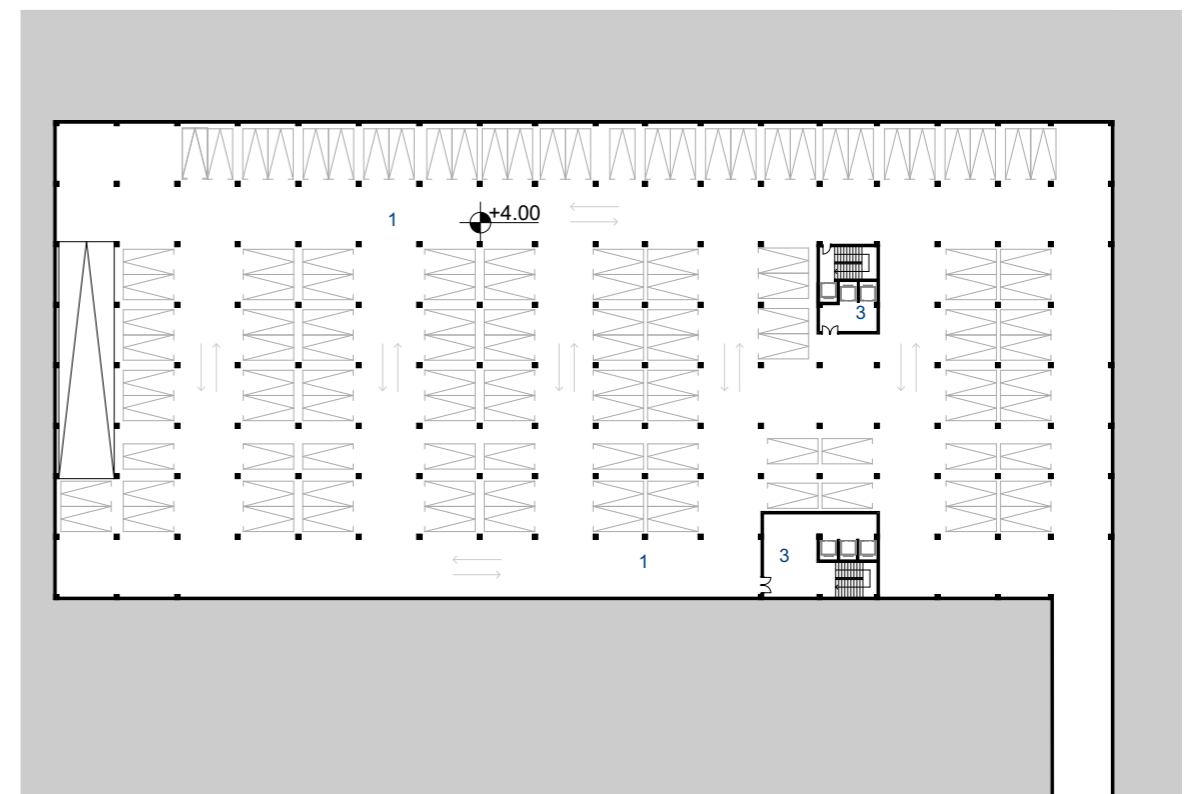


- 1. Entrance area
- 2. Info service
- 3. Lobby
- 4. Sanitary
- 5. Vertical communication
- 6. Service communication

+4.00 Level  
Esc 1:750

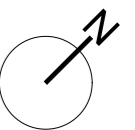


+0.00 Level

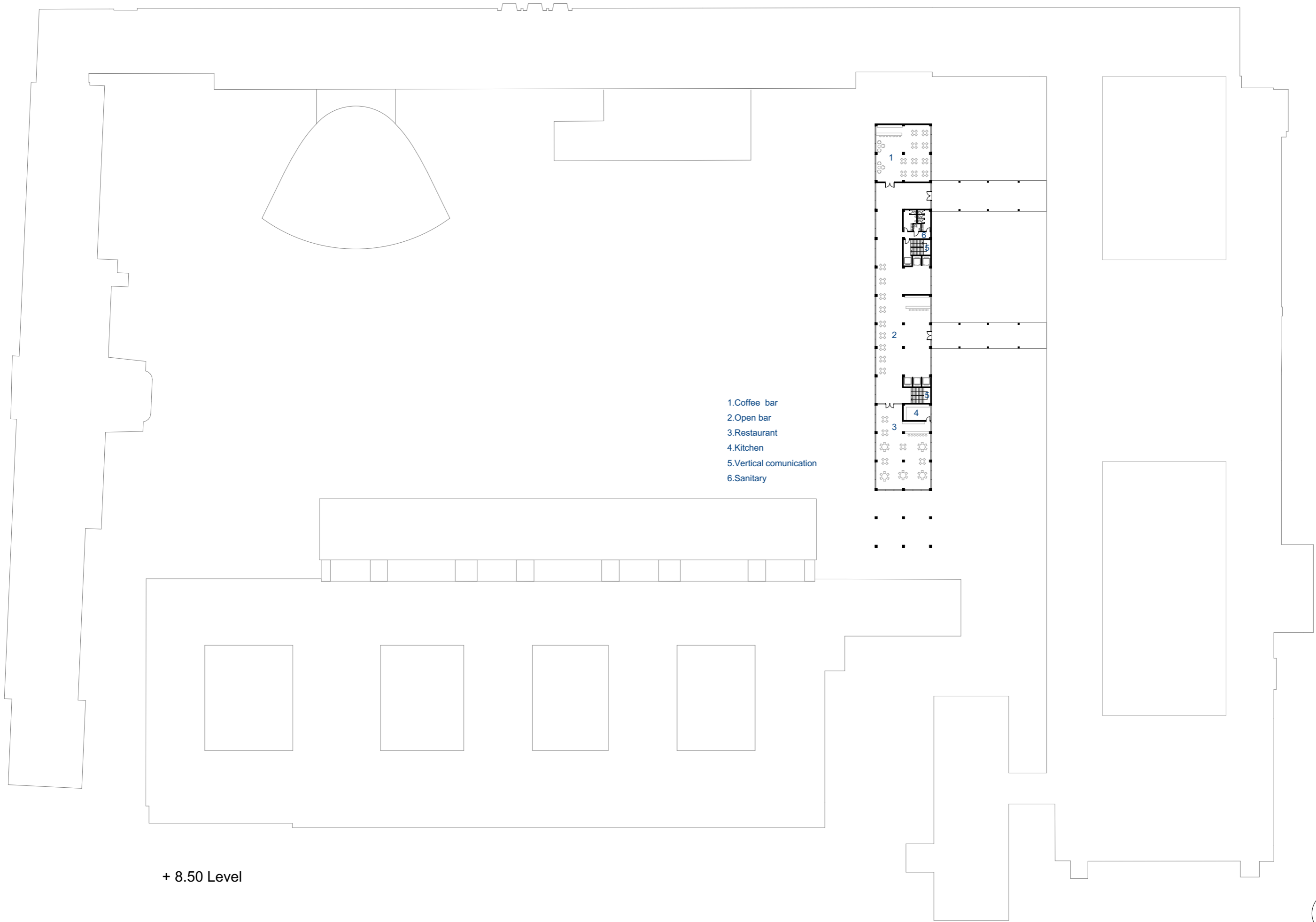


+4.00 Level

- 1. Parking space
- 2. Technical background
- 3. Vertical communication

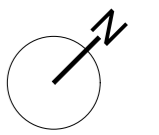


Esc 1:750

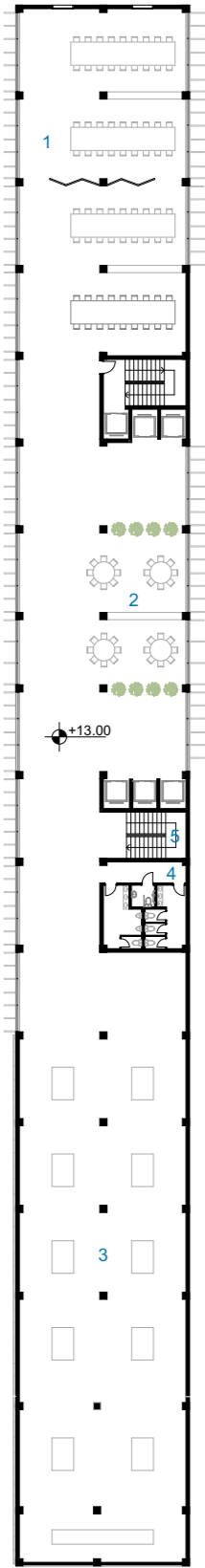


- 1.Coffee bar
- 2.Open bar
- 3.Restaurant
- 4.Kitchen
- 5.Vertical communication
- 6.Sanitary

+ 8.50 Level

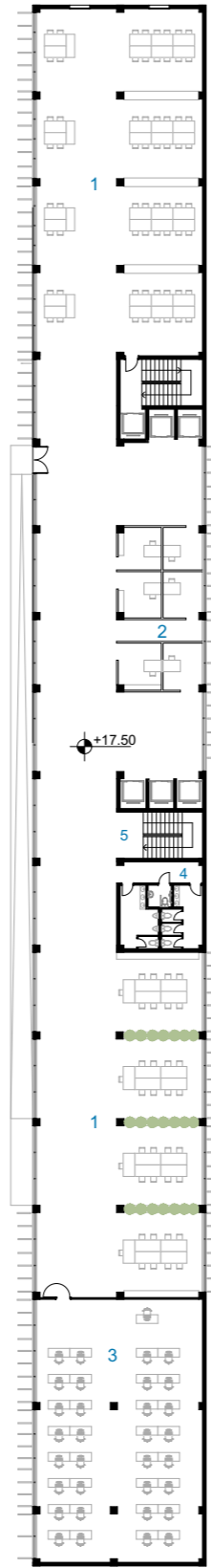


Esc 1:750



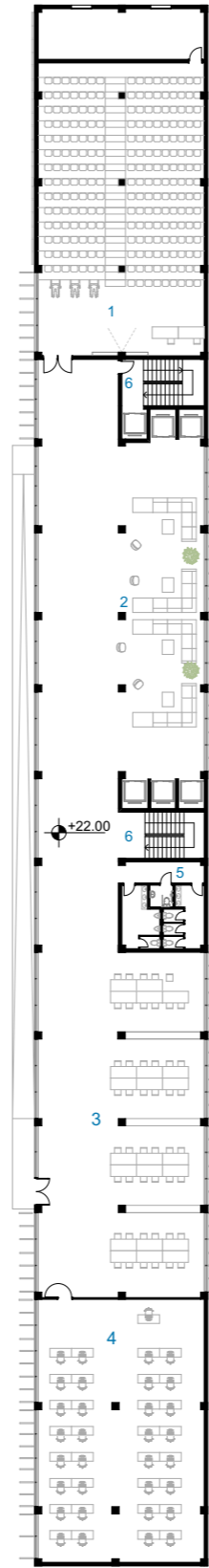
- 1. Multipurpose space
- 2. Social spaces
- 3. Exhibition space
- 4. Sanitary
- 5. Vertical communication

+13.00 Level



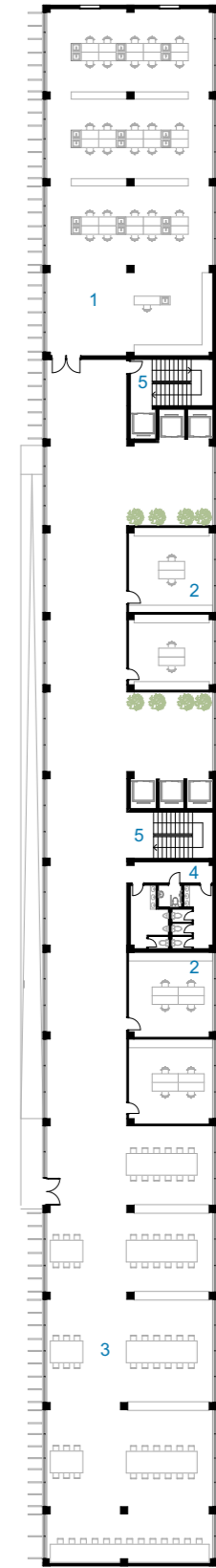
- 1. Open learning space
- 2. Individual learning space
- 3. Lecture room
- 4. Sanitary
- 5. Vertical communication

+17.50 Level



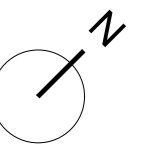
- 1..Amphiteater
- 2.Lounge
- 3.Open learning space
- 4.Lecture room
- 5.Sanitary
- 6.Vertical communication

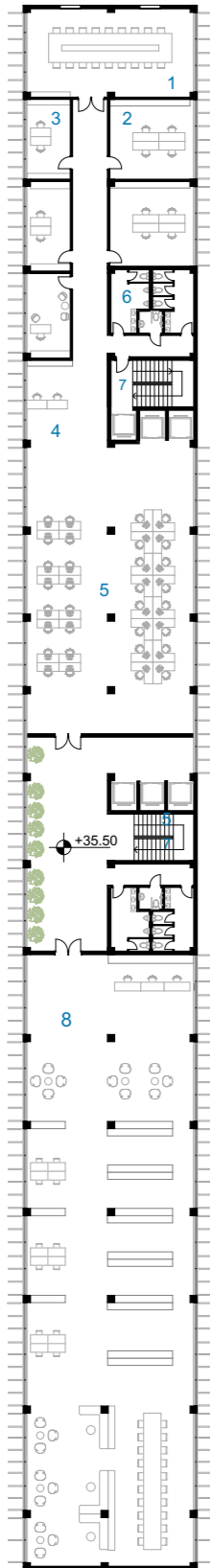
+22.00 Level



- 1.Laboratory
- 2.Offices
- 3.Open learning space
- 4.Sanitary
- 5.Vertical communication

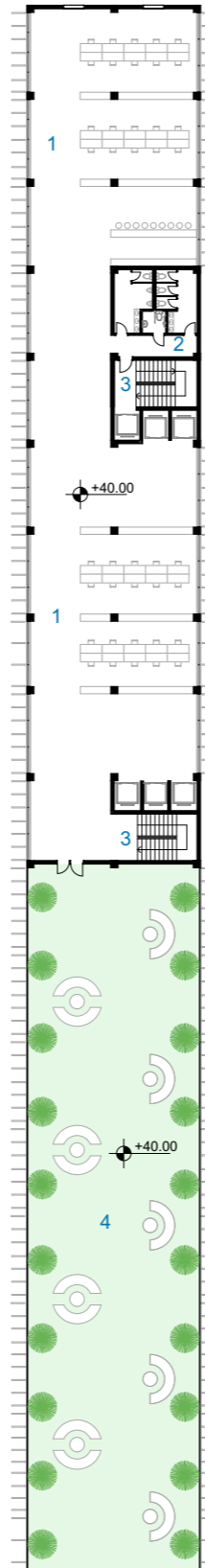
+26.50 Level





- 1.Meeting room
- 2.Offices
- 3.Offices
- 4.Reception
- 5.Open administrative space
- 6.Vertical communication
- 7.Sanitary
- 8.Library, study space

+35.50 Level

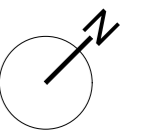


- 1.Workshop
- 2.Mini bar
- 3.Sanitary
- 4.Servis communication
- 5.Vertical communication
- 6. Green relax space

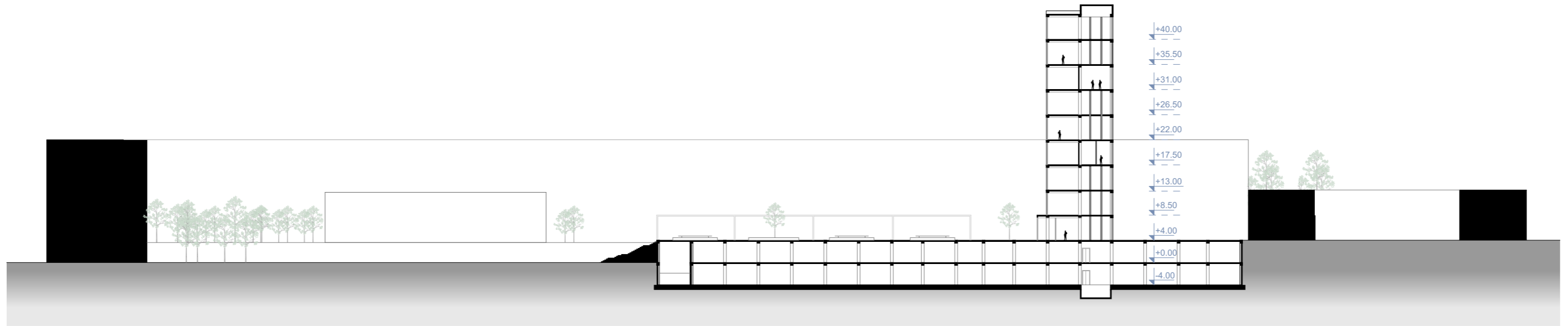
+40.00 Level



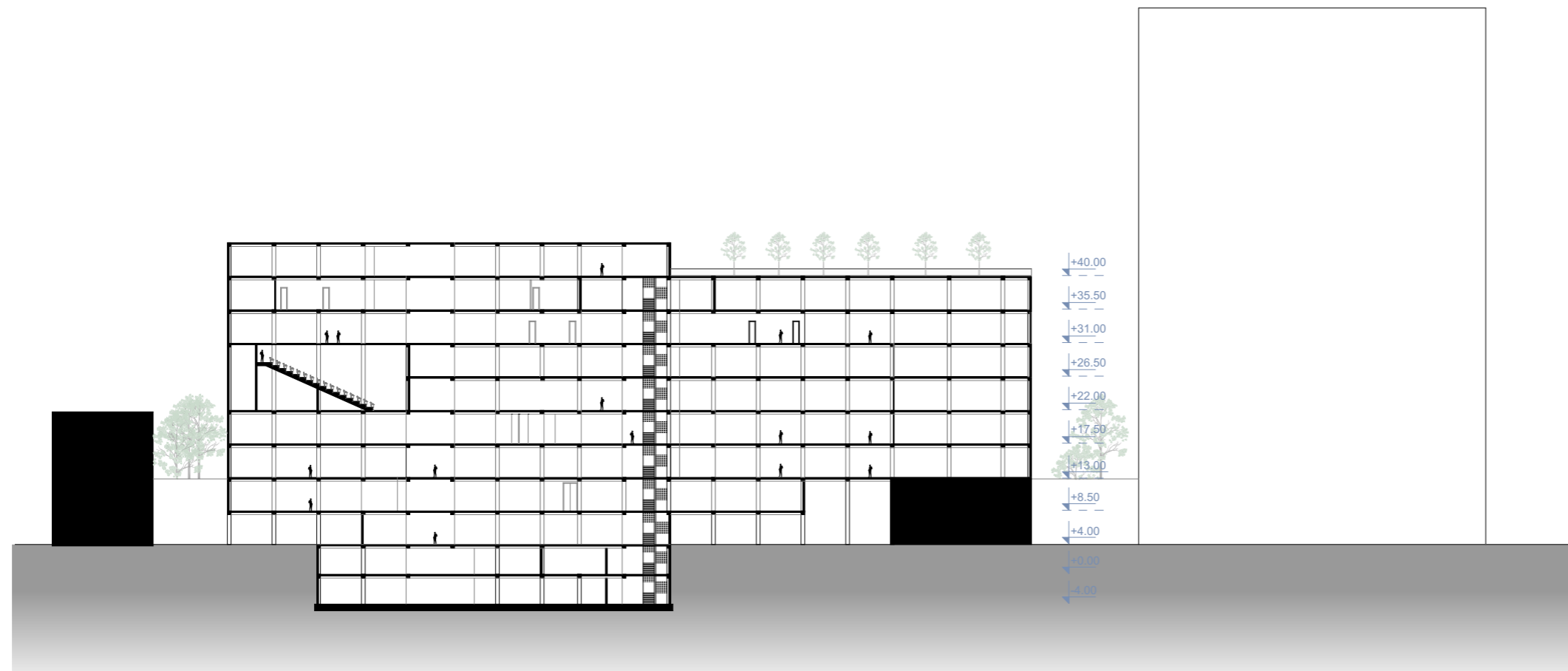
+44.50 Level



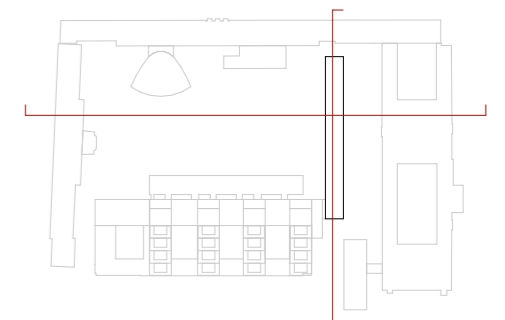
SECTIONS

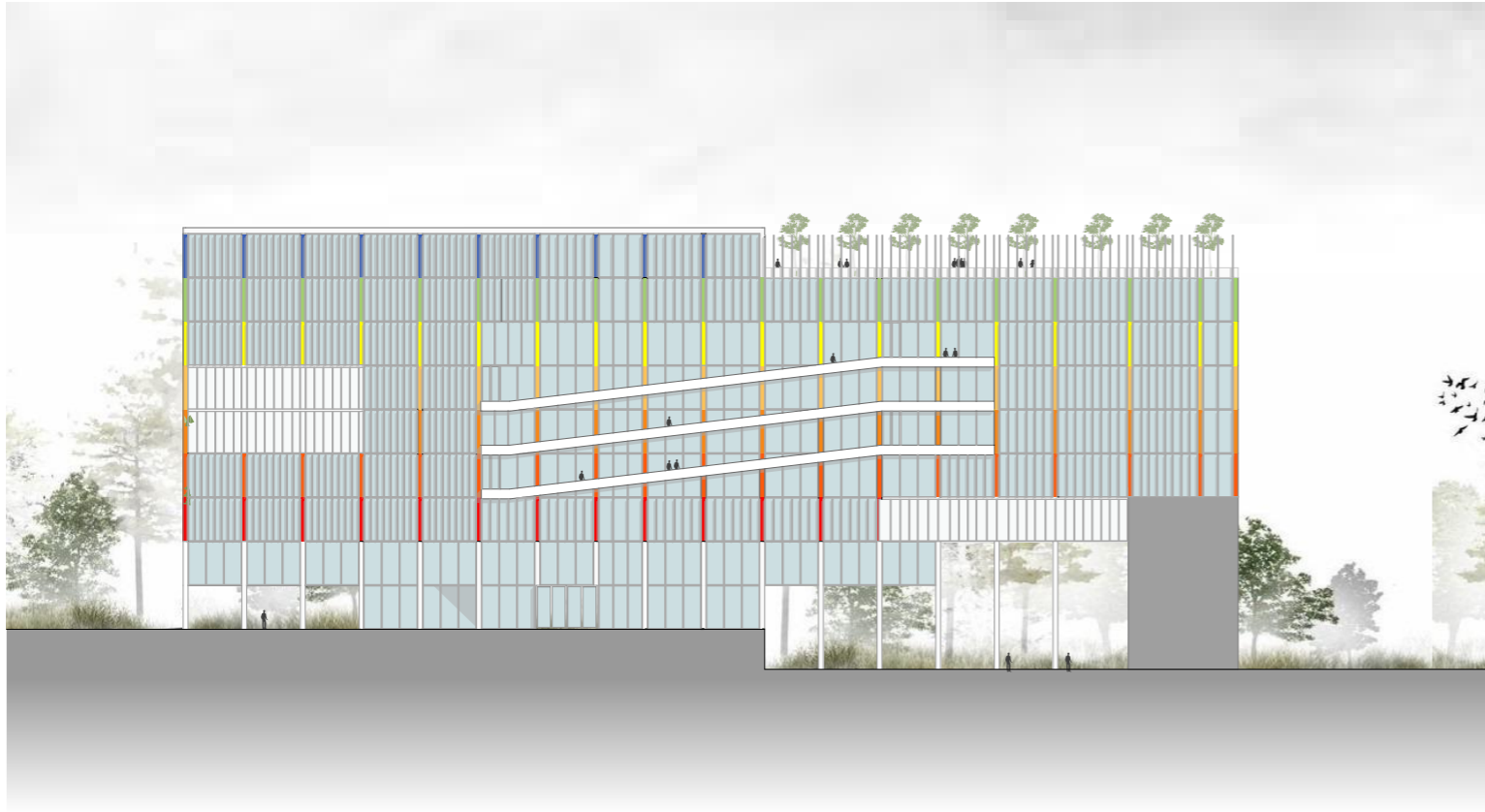


Section 1-1



Section 2 - 2

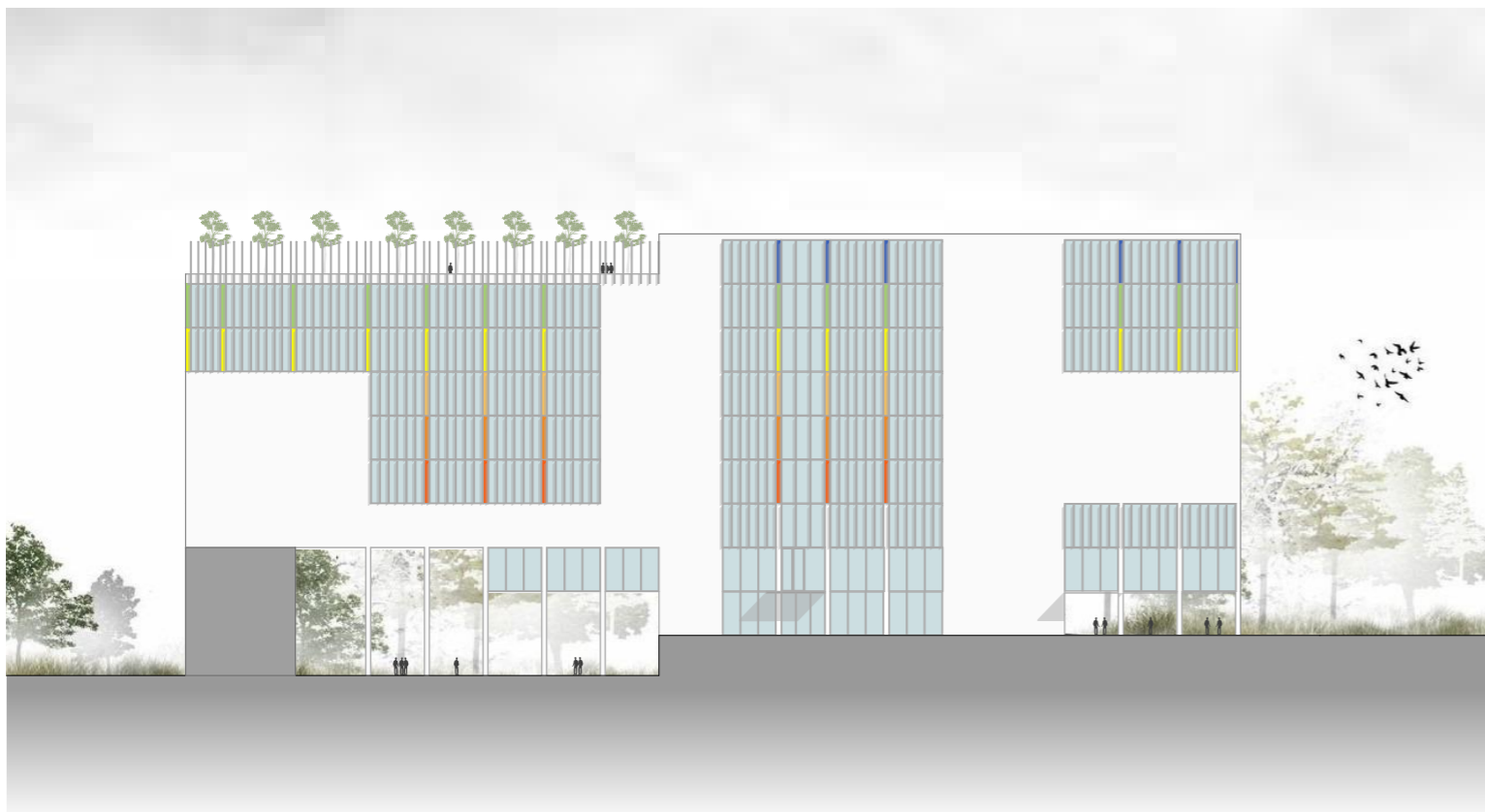




South - East Elevation



East - North Elevation



North - West Elevation



West - South Elevation



Workshops, Terasse

Administrative offices of the Rectorate, Library

Presentation (experimental) center of science and research

Inovative interdisciplinary research center STU, start up center of science and research

Inovative interdisciplinary research center STU, start up center of science and research

Inovative interdisciplinary research center STU, start up center of science and research

Social, exhibition and multipurpose spaces

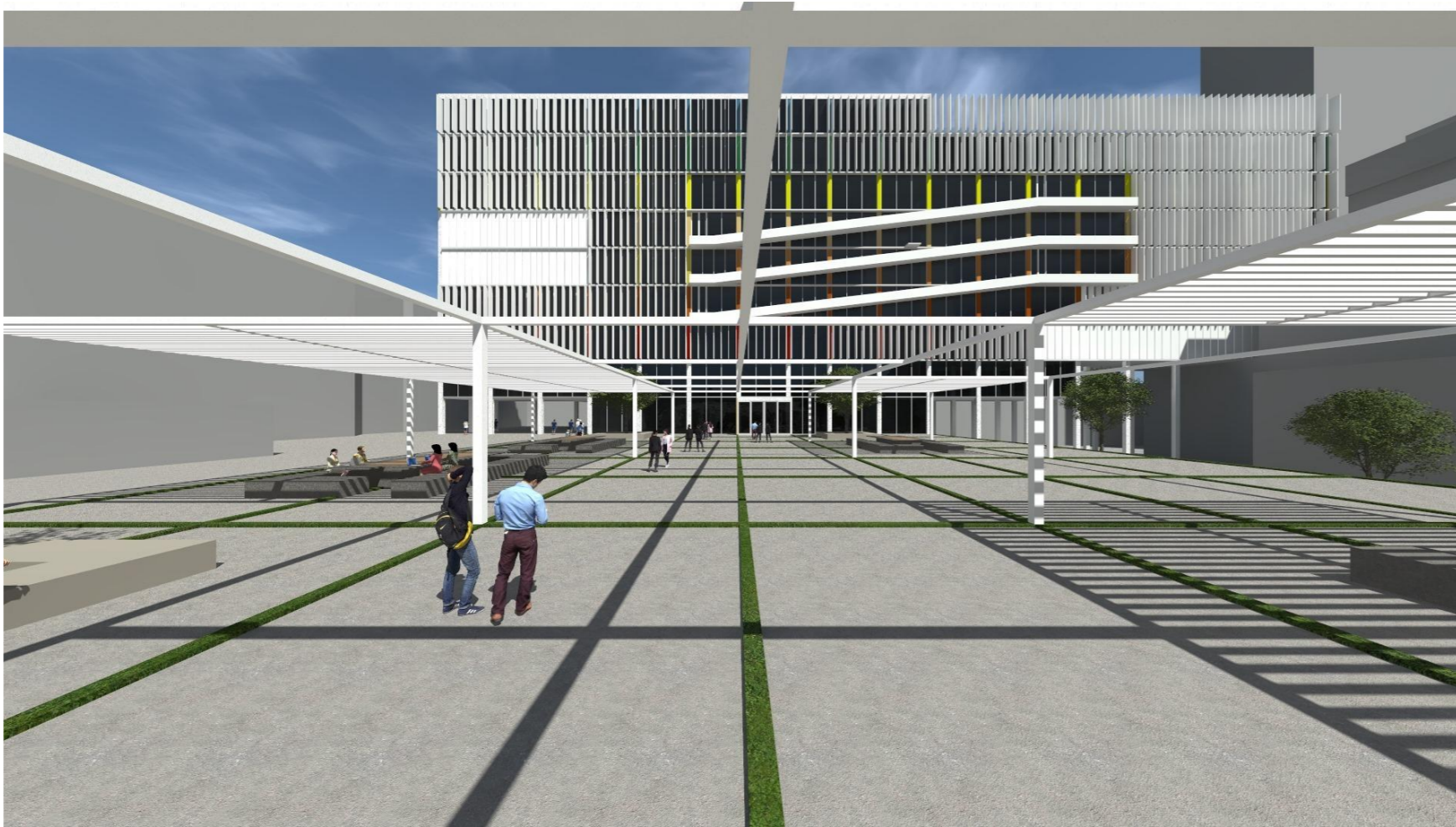
Resaturants, Cafes

Enterace area, Info service

Functional spaces

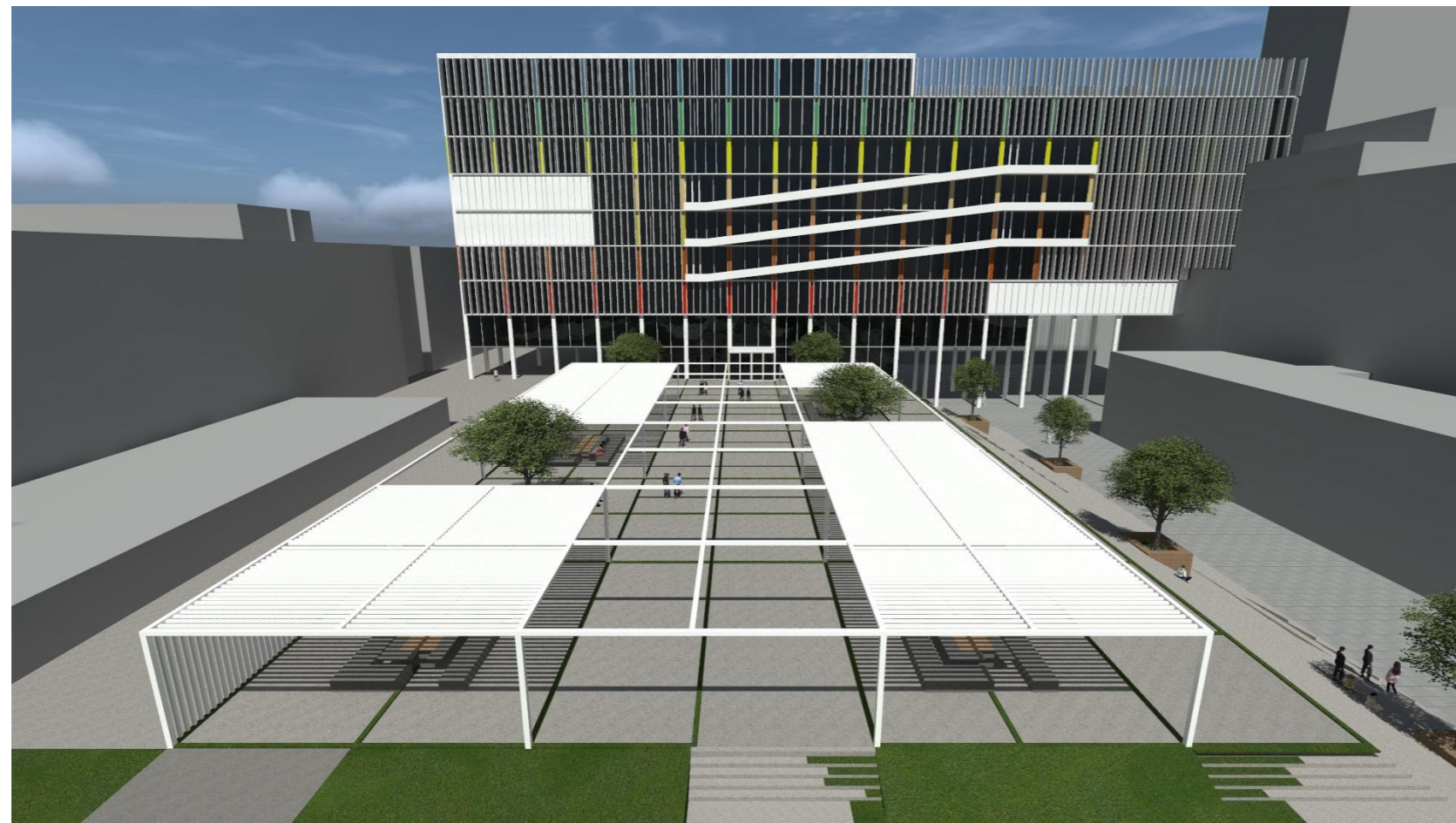


The facade of the object is mainly white. It is made of glass and panels that will be used for energy conservation and to avoid the directly sunlight. Some of panels are colored which each of them have diferent meaning. Exept the enterace space and the catering each of programs are presented with diferent color.



To front facade of the object we see ramps for communication between floors. In fact there are gone be used from the Inovative Interdisciplinary research center whic as part of the program is organized between the third and the fifth floor.

3D VISUALIZATION



To the courtyard has been given a special treatment. Since in this case the heavy is removed, the same place is designed with open boxes formed with white steel panels which can be used to seat and relax or to work in the open fresh space at the wooden work table.

